

**UNITED STATES
DEPARTMENT OF THE INTERIOR
BUREAU OF LAND MANAGEMENT**

RECEIVED

JUN 30 2008

Sundry Notices and Reports on Wells

Bureau of Land Management
Farmington Field Office

1. **Type of Well**
GAS

2. **Name of Operator**
BURLINGTON
RESOURCES OIL & GAS COMPANY LP

3. **Address & Phone No. of Operator**

PO Box 4289, Farmington, NM 87499 (505) 326-9700

4. **Location of Well, Footage, Sec., T, R, M**
Sec., T—N, R—W, NMPM

Unit E (SWNW), 1450' FNL & 810' FWL, Sec. 17, T31N, R8W NMPM

5. **Lease Number**
NMSF-078511A
6. **If Indian, All. or
Tribe Name**
7. **Unit Agreement Name**

8. **Well Name & Number**

9. **API Well No.**
Quinn POW 1

10. **Field and Pool**
30-045-29003

11. **County and State**
Basin FC
San Juan, NM

12. CHECK APPROPRIATE BOX TO INDICATE NATURE OF NOTICE, REPORT, OTHER DATA

Type of Submission:

- ☒ Notice of Intent
☐ Subsequent Report
☐ Final Abandonment

Type of Action:

- ☐ Abandonment
☐ Recompletion
☐ Plugging
☐ Casing Repair
☐ Altering Casing
☐ Change of Plans
☐ New Construction
☐ Non-Routine Fracturing
☐ Water Shut-off
☐ Conversion to Injection

☒ Other : MIT

13. Describe Proposed or Completed Operations

RCVD JUL 1 '08
OIL CONS. DIV.
DIST. 3

Burlington Resources intends to conduct a MIT according to the attached procedure

**SEE ATTACHED FOR
CONDITIONS OF APPROVAL**

14. I hereby certify that the foregoing is true and correct.

Signed  Philana Thompson Title Regulatory Tech Date 5/29/2008

(This space for Federal or State Office use)

APPROVED BY  Title Reg. Tech. Date 6/30/08

CONDITION OF APPROVAL, if any:

Title 18 U.S.C. Section 1001, makes it a crime for any person knowingly and willfully to make any department or agency of the United States any false, fictitious or fraudulent statements or representations as to any matter within its jurisdiction.

Give OGD 24 hr Notice to witness MIT.

NMOCD

ConocoPhillips

Quinn POW #1 (FRC) MIT/ Re-Run Tubing String with a Packer

Lat 36° 28' 8.04" N Long 107° 47' 42" W

Prepared By: Dryonis Pertuso
PE Peer review/approved By: Dennis Wilson

Date: 05/20/2008
Date:

Scope of work: The intent of this procedure to perform an MIT on the 4 1/2" production casing, retrieve the model D Baker Packer (currently set @ 3,240'), and re-run the 1 1/2" (OD 1.9") tubing with a retrievable packer, to be set 50' above the top perms in order be able to test the integrity of the casing in the future (as per BLM/ NMOCD requirement) without using a rig.

Est. Rig Days: 4

WELL DATA:

API: 30-045-29003

Location: 1450' FSL & 810' FEL, Unit D, Section 017- T31N - R008W

PBTD: 3,571' **TD:** 3,617'

Perforations: 3,013'-3,293' (Fruitland)

Well History: This well was completed in 1994 as a pressure observation well. In July 2002, the casing integrity was successfully tested, but since then the casing hasn't been tested again. In order to be able to maintain the status of this well as a pressure observation well (POW) the casing integrity must be tested every 5 years. Therefore a MIT on the 4 1/2" casing is recommended as well as setting a packer @ 2,970' on the 1 1/2" tubing to be able to test the casing integrity in the future without a rig.

B2 Adapters are required on all wells other than pumping wells.

Artificial lift on well (type): N/A

Est. Reservoir Pressure (psig): 70 psi

Well Failure Date: N/A, last MIT on July 2002.

Current Rate (Mcf/d): 0 **Est. Rate Post Remedial (Mcf/d):** 0

Earthen Pit Required: NO

Special Requirements: 2 hour chart for MIT, 50 bbls of completion/ packer fluid to be supplied by champion, a new tension packer for a 4 1/2" 10.5# K-55 casing on a 1 1/2" (1.9" OD) tubing and 3600' of 2 3/8" work string.

BAE Production Engineer: Dryonis Pertuso, Office: (505) 559-3409, Cell: (505) 320-6568

BAE Backup: Jim Arroyo, Office: (505) 599-3477, Cell: (505) 320-2568

MSO: Jim Bowman Cell: (505) 486-1906

Lead: Howard Self Cell: (505) 320-249

Area Foreman: Mark Poulson Cell: (505) 320-2523



Quinn POW #1 (FRC)
MIT/ Re-Run Tubing String with a Packer

Lat 36° 28' 8.04" N **Long** 107° 47' 42" W

PROCEDURE:

1. Notify NMOCD 48 hours before rigging up on well.
2. Hold safety meeting. Comply with all NMOCD, BLM, and ConocoPhillips safety and environmental regulations. Test rig anchors prior to moving in rig.
3. MIRU. Check casing and bradenhead pressures and record them in Wellview. RU blow lines from casing valves and begin blowing down casing pressure. Kill well with 2% KCl if necessary. ND wellhead NU BOP.
4. Pull donut, release the seal assembly (Baker "GBH-22") and sting out from packer, TOO H with tubing string, see detail below. (tubing is currently landed @ 3,245'

From top to bottom

- (1) 1 1/2" 2.9# J-55 tubing joint
- (1) 1 1/2" x 22' 2.9# J-55 pup joint
- (95) 1 1/2" 2.9# J-55 tubing joints
- (1) Pressure gauge (not working as per instrumentation group)
- (1) 1 1/2" x 2' 2.9# J-55 pup joint
- (1) 1 1/2" x 1.1' F-nipple (ID 1.43)
- (1) 1 1/2" x 6' 2.9# J-55 pup joint
- (1) Pressure gauge
- (1) 1 1/2" 2.9# J-55 tubing joint
- (1) Baker Seal assembly (model GBH-22)

Note: Spool out tec conductor cables while TOO H (2 spools required) Lay down the pressure gauges and send gauges, gauge carriers and conduits to COP yard.

5. Pick up packer plucker, RIH on 2 3/8" work string and pluck model D Baker Packer currently set @ 3,240', TOO H.
6. Pick up bailer and RIH with 2 3/8" work string tag up and if perforations are covered CO to 3,300'. TOO H.
7. Pick up RBP and Packer for 4 1/2" 10.5# K-55 casing and TIH on the 2 3/8" tubing, set RBP @ 2,970' (50' within top perms), set packer to test RBP to 500 psi for 10min, unset packer and perform MIT on the 4 1/2" casing, pressure test to 500 psi for 30 min, record test on a 2 hour chart, please Contact production Engineer to inform MIT results.
8. Latch on and retrieve RPB and TOO H, lay down RBP and lay down 2 3/8" working string.
9. Pick up tension packer and RIH with the 1 1/2" tubing string as follows. Blow well dry with air package while tripping in hole, landing tubing so that packer is at 2,970'.

From bottom to top

- (1) 1 1/2" Muleshoe/Expendable check
- (1) 1 1/2" x 1.1' F-nipple (ID 1.43)
- (1) 1 1/2 x 32' tubing joint
- (1) 4 1/2" Tension Packer on the 1.9" tubing
- (~93) 1 1/2" 2.9# J-55 tubing joints

Note: always install a full joint at the top of the string, and use pup joints as necessary to reach proper landing depth

1. Set tension packer by turning to the left pulling up
2. Load the back side of the well with packer fluid, back side capacity 37 bbls (casing-tubing annulus) and pressure test to 500 psi for 10 min, if test fails reset packer.
3. Bleed off casing pressure, and pump off expendable check swab dry if necessary.
4. ND BOP, NU wellhead. Notify lease operator that operation is complete. RDMO.

Recommended	<u>Dryonis Pertuso</u>	Approved	<u>Stand Terwilliger</u>
PE Engineer	Dryonis Pertuso	Expense Supervisor	Stand Terwilliger
Office	(505) 324-5158	Office	(505) 326-9582
Cell	(505) 320-3753	Cell	(505) 320-4785

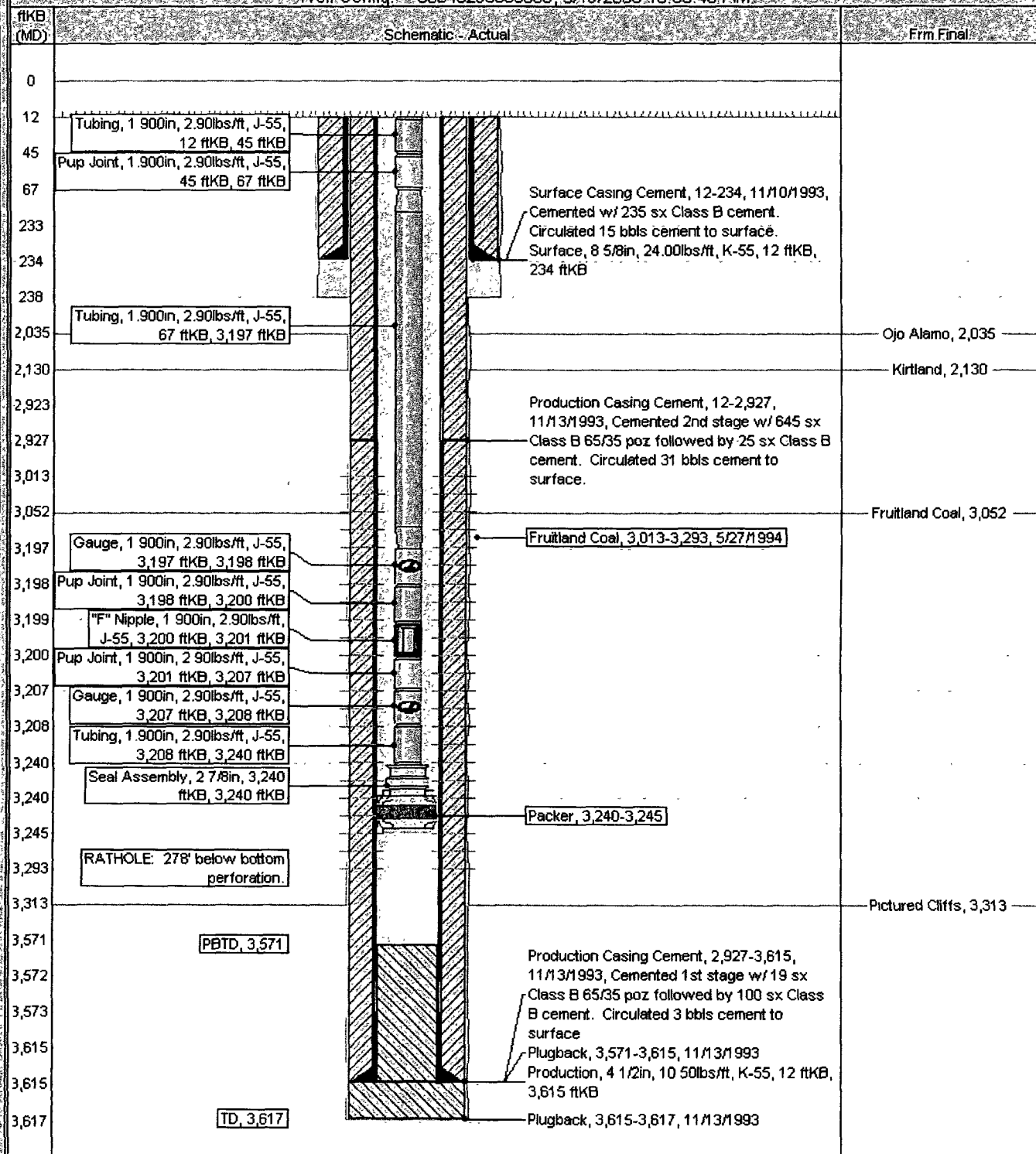
Current Schematic

ConocoPhillips

Well Name: QUINN POW #1

API/UWI 3004529003	Surface Legal Location 17-031N-008W	Field Name FSH (FTLD COAL) #0046	License No. 078511A	State/Province NEW MEXICO	Well Configuration Type Edit
Gross Elevation (ft) 6,426.00	Original KI Elevation (ft) 6,438.00	KI-Gross Distance (ft) 12.00	KI-Casing Flange Distance (ft) 6,438.00	KI-Tubing Hanger Distance (ft) 6,438.00	

Well Config: 30045290030000; 5/19/2008 10:58:40 AM



BLM CONDITIONS OF APPROVAL

WORKOVER AND RECOMPLETION OPERATIONS:

- 1. A properly functioning BOP and related equipment must be installed prior to commencing workover and/or recompletion operations.**
- 2. If this well is in a Seasonal Closure Area, adhere to the closure requirements and timeframes.**
- 3. If casing repair operations are needed, obtain prior approval from this office before commencing repairs**

SURFACE USE OPERATIONS:

The following Stipulations will apply to this well unless a particular Surface Managing Agency or private surface owner has supplied to BLM and operator a contradictory environmental stipulation. The failure of operator to comply with these requirements may result in assessments or penalties pursuant to 43 CFR 3163.1 or 3163.2. A copy of these conditions of approval shall be present on location during construction, drilling and reclamation activity.

An agreement between operator and fee landowner will take precedence over BLM surface stipulations unless (in reference to 43 CFR Part 3160) 1) BLM determines that operator's actions will affect adjacent Federal or Indian surface, or 2) operator does not maintain well area and lease premises in a workmanlike manner with due regard for safety, conservation and appearance, or 3) no such agreement exists, or 4) in the event of well abandonment, minimal Federal restoration requirements will be required.

STANDARD STIPULATIONS: All surface areas disturbed during work-over activities and not in use for production activities will be reseeded. This should occur in the first 90 days after completion of workover activities.

SPECIAL STIPULATIONS:

- 1. Pits will be fenced during workover operation.**
- 2. All disturbance will be kept on existing pad.**
- 3. All pits will be pulled and closed immediately upon completion of the workover activities.**
- 4. Pits will be lined with an impervious material at least 12 mils thick.**