

District I
1625 N. French Dr., Hobbs, NM 88240
District II
1301 W. Grand Avenue, Artesia, NM 88210
District III
1000 Rio Brazos Road, Aztec, NM 87410
District IV
1220 S. St. Francis Dr., Santa Fe, NM 87505

State of New Mexico
Energy Minerals and Natural Resources
Department
Oil Conservation Division
1220 South St. Francis Dr.
Santa Fe, NM 87505

Form C-144
June 24, 2008

For temporary pits, closed-loop systems, and below-grade tanks, submit to the appropriate NMOCD District Office.
For permanent pits and exceptions submit to the Santa Fe Environmental Bureau office and provide a copy to the appropriate NMOCD District Office.

Pit, Closed-Loop System, Below-Grade Tank, or **RCVD JUL 21 '08**
Proposed Alternative Method Permit or Closure Plan Application **CONS. DIV.**

Type of action: ☒ Permit of a pit, closed-loop system, below-grade tank, or proposed alternative method
☐ Closure of a pit, closed-loop system, below-grade tank, or proposed alternative method

Instructions: Please submit one application (Form C-144) per individual pit, closed-loop system, below-grade tank or alternative request.

Please be advised that approval of this request does not relieve the operator of liability should operations result in pollution of surface water, ground water or the environment. Nor does approval relieve the operator of its responsibility to comply with any other applicable governmental authority's rules, regulations or ordinances.

Operator: Energen Resources Corporation OGRID #: 162928
Address: 2010 Afton Place, Farmington, New Mexico 87401
Facility or well name: Jicarilla 117E 5A
API Number: 30-039-22979 OCD Permit Number: _____
U/L or Qtr/Qtr E Section 28 Township 26N Range 03W County: Rio Arriba
Center of Proposed Design: Latitude 36.45632 Longitude 107.15274 NAD: ☐ 1927 ☒ 1983
Surface Owner: ☐ Federal ☐ State ☐ Private ☐ Tribal Trust or Indian Allotment

☐ **Pit:** Subsection F or G of 19.15.17.11 NMAC

Temporary: ☐ Drilling ☐ Workover

☐ Permanent ☐ Emergency ☐ Cavitation ☐ Steel Pit

☐ Lined ☐ Unlined

Liner type: Thickness _____ mil ☐ LLDPE ☐ HDPE ☐ PVC

☐ Other _____ ☐ String-Reinforced

Seams: ☐ Welded ☐ Factory ☐ Other _____

Volume: _____ bbl Dimensions: L _____ x W _____ x D _____

☒ **Closed-loop System:** Subsection H of 19.15.17.11 NMAC

☐ Drying Pad ☒ Tanks ☐ Haul-off Bins ☐ Other _____

☐ Lined ☒ Unlined

Liner type: Thickness _____ mil ☐ LLDPE ☐ HDPE ☐ PVC

☐ Other _____

Seams: ☐ Welded ☐ Factory ☐ Other _____

Volume: 400 bbl _____ yd³

Dimensions: Height 20 x Diameter 12

☐ **Below-grade tank:** Subsection I of 19.15.17.11 NMAC

Volume: _____ bbl

Type of fluid: _____

Tank Construction material: _____

☐ Secondary containment with leak detection

☐ Visible sidewalls, liner, 6-inch lift and automatic overflow shut-off

☐ Visible sidewalls and liner

☐ Visible sidewalls only

☐ Other _____

Liner type: Thickness _____ mil ☐ HDPE ☐ PVC

☐ Other _____

Fencing: Subsection D of 19.15.17.11 NMAC

☐ Chain link, six feet in height, two strands of barbed wire at top

☐ Four foot height, four strands of barbed wire evenly spaced between one and four feet

Netting: Subsection E of 19.15.17.11 NMAC

☐ Screen ☐ Netting ☐ Other _____

☐ Monthly inspections

Signs: Subsection C of 19.15.17.11 NMAC

☐ 12'x24', 2' lettering, providing Operator's name, site location, and emergency telephone numbers

☒ Signed in compliance with 19.15.3.103 NMAC

☐ **Alternative Method:**

Submittal of an exception request is required. Exceptions must be submitted to the Santa Fe Environmental Bureau office for consideration of approval.

Administrative Approvals and Exceptions:

Justifications and/or demonstrations of equivalency are required. Please refer to 19.15.17 NMAC for guidance.

Please check a box if one or more of the following is requested, if not leave blank:

☐ Administrative approval(s): Requests must be submitted to the appropriate division district or the Santa Fe Environmental Bureau office for consideration of approval.

☐ Exception(s): Requests must be submitted to the Santa Fe Environmental Bureau office for consideration of approval.

Siting Criteria (regarding permitting): 19.15.17.10 NMAC

Instructions: The applicant must demonstrate compliance for each siting criteria below in the application. Recommendations of acceptable source material are provided below. Requests regarding changes to certain siting criteria may require administrative approval from the appropriate district office or may be considered an exception which must be submitted to the Santa Fe Environmental Bureau office for consideration of approval. Applicant must attach justification for request. Please refer to 19.15.17.10 NMAC for guidance. Siting criteria does not apply to drying pads or above-grade tanks associated with a closed-loop system.

Ground water is less than 50 feet below the bottom of the temporary pit, permanent pit, or below-grade tank.

☐ Yes ☐ No

- NM Office of the State Engineer - iWATERS database search; USGS; Data obtained from nearby wells

Within 300 feet of a continuously flowing watercourse, or 200 feet of any other significant watercourse or lakebed, sinkhole, or playa lake (measured from the ordinary high-water mark).

☐ Yes ☐ No

- Topographic map; Visual inspection (certification) of the proposed site

Within 300 feet from a permanent residence, school, hospital, institution, or church in existence at the time of initial application.

☐ Yes ☐ No

(Applies to temporary, emergency, or cavitation pits and below-grade tanks)

☐ NA

- Visual inspection (certification) of the proposed site; Aerial photo; Satellite image

Within 1000 feet from a permanent residence, school, hospital, institution, or church in existence at the time of initial application.

☐ Yes ☐ No

(Applies to permanent pits)

☐ NA

- Visual inspection (certification) of the proposed site; Aerial photo; Satellite image

Within 500 horizontal feet of a private, domestic fresh water well or spring that less than five households use for domestic or stock watering purposes, or within 1000 horizontal feet of any other fresh water well or spring, in existence at the time of initial application.

☐ Yes ☐ No

- NM Office of the State Engineer - iWATERS database search; Visual inspection (certification) of the proposed site

Within incorporated municipal boundaries or within a defined municipal fresh water well field covered under a municipal ordinance adopted pursuant to NMSA 1978, Section 3-27-3, as amended.

☐ Yes ☐ No

- Written confirmation or verification from the municipality; Written approval obtained from the municipality

Within 500 feet of a wetland.

☐ Yes ☐ No

- US Fish and Wildlife Wetland Identification map; Topographic map; Visual inspection (certification) of the proposed site

Within the area overlying a subsurface mine.

☐ Yes ☐ No

- Written confirmation or verification or map from the NM EMNRD-Mining and Mineral Division

Within an unstable area.

☐ Yes ☐ No

- Engineering measures incorporated into the design; NM Bureau of Geology & Mineral Resources; USGS; NM Geological Society; Topographic map

Within a 100-year floodplain.

☐ Yes ☐ No

- FEMA map

Temporary Pits, Emergency Pits, and Below-grade Tanks Permit Application Attachment Checklist: Subsection B of 19.15.17.9 NMAC

Instructions: Each of the following items must be attached to the application. Please indicate, by a check mark in the box, that the documents are attached.

- ☐ Hydrogeologic Report (Below-grade Tanks) - based upon the requirements of Paragraph (4) of Subsection B of 19.15.17.9 NMAC
- ☐ Hydrogeologic Data (Temporary and Emergency Pits) - based upon the requirements of Paragraph (2) of Subsection B of 19.15.17.9 NMAC
- ☐ Siting Criteria Compliance Demonstrations - based upon the appropriate requirements of 19.15.17.10 NMAC
- ☐ Design Plan - based upon the appropriate requirements of 19.15.17.11 NMAC
- ☐ Operating and Maintenance Plan - based upon the appropriate requirements of 19.15.17.12 NMAC
- ☐ Closure Plan - based upon the appropriate requirements of Subsection C of 19.15.17.9 NMAC and 19.15.17.13 NMAC

☐ Previously Approved Design (attach copy of design) API Number: _____ or Permit Number: _____

Closed-loop Systems Permit Application Attachment Checklist: Subsection B of 19.15.17.9 NMAC

Instructions: Each of the following items must be attached to the application. Please indicate, by a check mark in the box, that the documents are attached.

- ☐ Geologic and Hydrogeologic Data (required for on-site closure) - based upon the requirements of Paragraph (3) of Subsection B of 19.15.17.9 NMAC
- ☐ Siting Criteria Compliance Demonstrations (required for on-site closure) - based upon the appropriate requirements of 19.15.17.10 NMAC
- ☒ Design Plan - based upon the appropriate requirements of 19.15.17.11 NMAC
- ☒ Operating and Maintenance Plan - based upon the appropriate requirements of 19.15.17.12 NMAC
- ☒ Closure Plan - based upon the appropriate requirements of Subsection C of 19.15.17.9 NMAC and 19.15.17.13 NMAC

NMAC

☐ Previously Approved Design (attach copy of design) API Number: _____

Permanent Pits Permit Application Checklist: Subsection B of 19.15.17.9 NMAC

Instructions: Each of the following items must be attached to the application. Please indicate, by a check mark in the box, that the documents are attached.

- ☐ Hydrogeologic Report - based upon the requirements of Paragraph (1) of Subsection B of 19.15.17.9 NMAC
- ☐ Siting Criteria Compliance Demonstrations - based upon the appropriate requirements of 19.15.17.10 NMAC
- ☐ Climatological Factors Assessment
- ☐ Certified Engineering Design Plans - based upon the appropriate requirements of 19.15.17.11 NMAC
- ☐ Dike Protection and Structural Integrity Design - based upon the appropriate requirements of 19.15.17.11 NMAC
- ☐ Leak Detection Design - based upon the appropriate requirements of 19.15.17.11 NMAC
- ☐ Liner Specifications and Compatibility Assessment - based upon the appropriate requirements of 19.15.17.11 NMAC
- ☐ Quality Control/Quality Assurance Construction and Installation Plan
- ☐ Operating and Maintenance Plan - based upon the appropriate requirements of 19.15.17.12 NMAC
- ☐ Freeboard and Overtopping Prevention Plan - based upon the appropriate requirements of 19.15.17.11 NMAC
- ☐ Nuisance or Hazardous Odors, including H₂S, Prevention Plan
- ☐ Emergency Response Plan
- ☐ Oil Field Waste Stream Characterization
- ☐ Monitoring and Inspection Plan
- ☐ Erosion Control Plan
- ☐ Closure Plan - based upon the appropriate requirements of Subsection C of 19.15.17.9 NMAC and 19.15.17.13 NMAC

Proposed Closure: 19.15.17.13 NMAC

Type: ☒ Drilling ☐ Workover ☐ Emergency ☐ Cavitation ☐ Permanent Pit ☐ Below-grade Tank ☐ Closed-loop System ☐ Alternative

Proposed Closure Method: ☐ Waste Excavation and Removal

☒ Waste Removal (Closed-loop systems only)

☐ On-site Closure Method (Only for temporary pits and closed-loop systems)

☐ In-place Burial ☐ On-site Trench Burial

☐ Alternative Closure Method (Exceptions must be submitted to the Santa Fe Environmental Bureau for consideration)

Siting Criteria (regarding on-site closure methods only): 19.15.17.10 NMAC

Instructions: Each siting criteria requires a demonstration of compliance in the closure plan. Recommendations of acceptable source material are provided below. Requests regarding changes to certain siting criteria may require administrative approval from the appropriate district office or may be considered an exception which must be submitted to the Santa Fe Environmental Bureau office for consideration of approval. Justifications and/or demonstrations of equivalency are required. Please refer to 19.15.17.10 NMAC for guidance.

Ground water is less than 50 feet below the bottom of the buried waste.

- NM Office of the State Engineer - iWATERS database search; USGS; Data obtained from nearby wells

☐ Yes ☐ No
☐ NA

Ground water is between 50 and 100 feet below the bottom of the buried waste

- NM Office of the State Engineer - iWATERS database search; USGS; Data obtained from nearby wells

☐ Yes ☐ No
☐ NA

Ground water is more than 100 feet below the bottom of the buried waste.

- NM Office of the State Engineer - iWATERS database search; USGS; Data obtained from nearby wells

☐ Yes ☐ No
☐ NA

Within 300 feet of a continuously flowing watercourse, or 200 feet of any other significant watercourse or lakebed, sinkhole, or playa lake (measured from the ordinary high-water mark).

- Topographic map; Visual inspection (certification) of the proposed site

☐ Yes ☐ No

Within 300 feet from a permanent residence, school, hospital, institution, or church in existence at the time of initial application.

- Visual inspection (certification) of the proposed site; Aerial photo; Satellite image

☐ Yes ☐ No

Within 500 horizontal feet of a private, domestic fresh water well or spring that less than five households use for domestic or stock watering purposes, or within 1000 horizontal feet of any other fresh water well or spring, in existence at the time of initial application.

- NM Office of the State Engineer - iWATERS database; Visual inspection (certification) of the proposed site

☐ Yes ☐ No

Within incorporated municipal boundaries or within a defined municipal fresh water well field covered under a municipal ordinance adopted pursuant to NMSA 1978, Section 3-27-3, as amended.

- Written confirmation or verification from the municipality; Written approval obtained from the municipality

☐ Yes ☐ No

Within 500 feet of a wetland.

- US Fish and Wildlife Wetland Identification map; Topographic map; Visual inspection (certification) of the proposed site

☐ Yes ☐ No

Within the area overlying a subsurface mine.

- Written confirmation or verification or map from the NM EMNRD-Mining and Mineral Division

☐ Yes ☐ No

Within an unstable area.

- Engineering measures incorporated into the design; NM Bureau of Geology & Mineral Resources; USGS; NM Geological Society; Topographic map

☐ Yes ☐ No

Within a 100-year floodplain.

- FEMA map

☐ Yes ☐ No

Waste Excavation and Removal Closure Plan Checklist: (19.15.17.13 NMAC) *Instructions: Each of the following items must be attached to the closure plan. Please indicate, by a check mark in the box, that the documents are attached.*

- ☒ Protocols and Procedures - based upon the appropriate requirements of 19.15.17.13 NMAC
- ☐ Confirmation Sampling Plan (if applicable) - based upon the appropriate requirements of Subsection F of 19.15.17.13 NMAC
- ☒ Disposal Facility Name and Permit Number (for liquids, drilling fluids and drill cuttings)
- ☐ Soil Backfill and Cover Design Specifications - based upon the appropriate requirements of Subsection H of 19.15.17.13 NMAC
- ☒ Re-vegetation Plan - based upon the appropriate requirements of Subsection I of 19.15.17.13 NMAC
- ☒ Site Reclamation Plan - based upon the appropriate requirements of Subsection G of 19.15.17.13 NMAC

Waste Removal Closure For Closed-loop Systems That Utilize Haul-off Bins Only: (19.15.17.13.D NMAC) *Instructions: Please identify the facility or facilities for the disposal of liquids, drilling fluids and drill cuttings.*

Disposal Facility Name: T-N-T Environmental, Inc./ Envirotech Disposal Facility Permit Number: WM-1-008, NM-01-0011

On-Site Closure Plan Checklist: (19.15.17.13 NMAC) *Instructions: Each of the following items must be attached to the closure plan. Please indicate, by a check mark in the box, that the documents are attached.*

- ☐ Siting Criteria Compliance Demonstrations - based upon the appropriate requirements of 19.15.17.10 NMAC
- ☐ Proof of Surface Owner Notice - based upon the appropriate requirements of Subsection F of 19.15.17.13 NMAC
- ☐ Construction and Design of Burial Trench (if applicable) based upon the appropriate requirements of 19.15.17.11 NMAC
- ☐ Protocols and Procedures - based upon the appropriate requirements of 19.15.17.13 NMAC
- ☐ Confirmation Sampling Plan (if applicable) - based upon the appropriate requirements of Subsection F of 19.15.17.13 NMAC
- ☐ Waste Material Sampling Plan - based upon the appropriate requirements of Subsection F of 19.15.17.13 NMAC
- ☐ Disposal Facility Name and Permit Number (for liquids, drilling fluids and drill cuttings or in case on-site closure standards cannot be achieved)
- ☐ Soil Cover Design - based upon the appropriate requirements of Subsection H of 19.15.17.13 NMAC
- ☐ Re-vegetation Plan - based upon the appropriate requirements of Subsection I of 19.15.17.13 NMAC
- ☐ Site Reclamation Plan - based upon the appropriate requirements of Subsection G of 19.15.17.13 NMAC

Operator Application Certification:

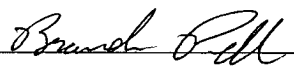
I hereby certify that the information submitted with this application is true, accurate and complete to the best of my knowledge and belief.

Name (Print): Martin Cabrera Title: District Engineer

Signature:  Date: 7/28/08

e-mail address: mcabrera@energen.com Telephone: (505) 324-4122

OCD Approval: ☒ Permit Application (including closure plan) ☐ Closure Plan (only)

OCD Representative Signature:  Approval Date: 7-28-08

Title: Enviro Spec OCD Permit Number: _____

Closure Report (required within 60 days of closure completion): Subsection K of 19.15.17.13 NMAC

☐ Closure Completion Date: _____

Closure Method:

- ☐ Waste Excavation and Removal ☐ On-Site Closure Method ☐ Alternative Closure Method
- ☐ If different from approved plan, please explain.

Closure Report Attachment Checklist: *Instructions: Each of the following items must be attached to the closure report. Please indicate, by a check mark in the box, that the documents are attached.*

- ☐ Proof of Closure Notice
- ☐ Proof of Deed Notice (if applicable)
- ☐ Plot Plan
- ☐ Confirmation Sampling Analytical Results
- ☐ Waste Material Sampling Analytical Results
- ☐ Disposal Facility Name and Permit Number
- ☐ Soil Backfilling and Cover Installation
- ☐ Re-vegetation Application Rates and Seeding Technique
- ☐ Site Reclamation (Photo Documentation)

On-site Closure Location: Latitude _____ Longitude _____ NAD: ☐ 1927 ☐ 1983

Operator Closure Certification:

I hereby certify that the information and attachments submitted with this closure report is true, accurate and complete to the best of my knowledge and belief. I also certify that the closure complies with all applicable closure requirements and conditions specified in the approved closure plan.

Name (Print): Luis Martin Cabrera Title: District Engineer

Signature:  Date: 7/28/08

e-mail address: mcabrera@energen.com Telephone: 505-324-4122

Closed-loop Design Plan:

Our closed loop system will not entail a drying pad, temporary pit, below grade tank or sump. It will entail an above ground tank suitable for holding the cuttings and fluids for rig operations. The tank will be of sufficient volume to maintain a safe free board between disposal of the liquids and solids from rig operations.

- 1) Fencing is not required for an above ground closed-loop system.
- 2) It will be signed in compliance with 19.15.3.103 NMAC.
- 3) A frac tank will be on location to store fresh water.

Closed-loop Operating and Maintenance Plan:

The closed-loop tank will be operated and maintained; to contain liquids and solids, to aid in the prevention of contamination of fresh water sources, in order to protect public health and the environment. To attain this goal the following steps will be followed:

- 1) The liquids will be vacuumed out and disposed of at T-N-T Environmental, Inc. facility (Permit Number WM-1-008). Solids in the closed-loop tank will be vacuumed out and disposed of at Envirotech (Permit Number NM-01-0011) on a periodic basis to prevent over topping.
- 2) No hazardous waste, miscellaneous solid waste or debris will be discharged into or stored in the tank. Only fluids or cuttings used or generated by rig operations will be placed or stored in the tank.
- 3) The division district office will be notified within 48 hours of the discovery of compromised integrity of the closed-loop tank. Upon the discovery of the compromised tank, repairs will be enacted immediately.
- 4) All of the above operations will be inspected and a log will be signed and dated. During rig operations the inspection will be daily.

Closed-loop Closure Plan:

The closed loop tank will be closed in accordance with 19.15.17.13. This will be done by transporting cuttings and all remaining sludge to Envirotech (Permit Number NM-01-0011) following rig operations. All remaining liquids will be transported and disposed of in the T-N-T Environmental, Inc. facility (Permit Number WM-1-008). The tanks will be removed from the location as part of the rig move. At time of well abandonment, the site will be reclaimed and re-vegetated to pre-existing conditions when possible.

OIL CONSERVATION DIVISION

STATE OF NEW MEXICO
OIL AND MINERALS DEPARTMENT

P. O. BOX 2088

SANTA FE, NEW MEXICO 87501

Form C-107
Revised 10-1-78

All distances must be from the outer boundaries of the Section.

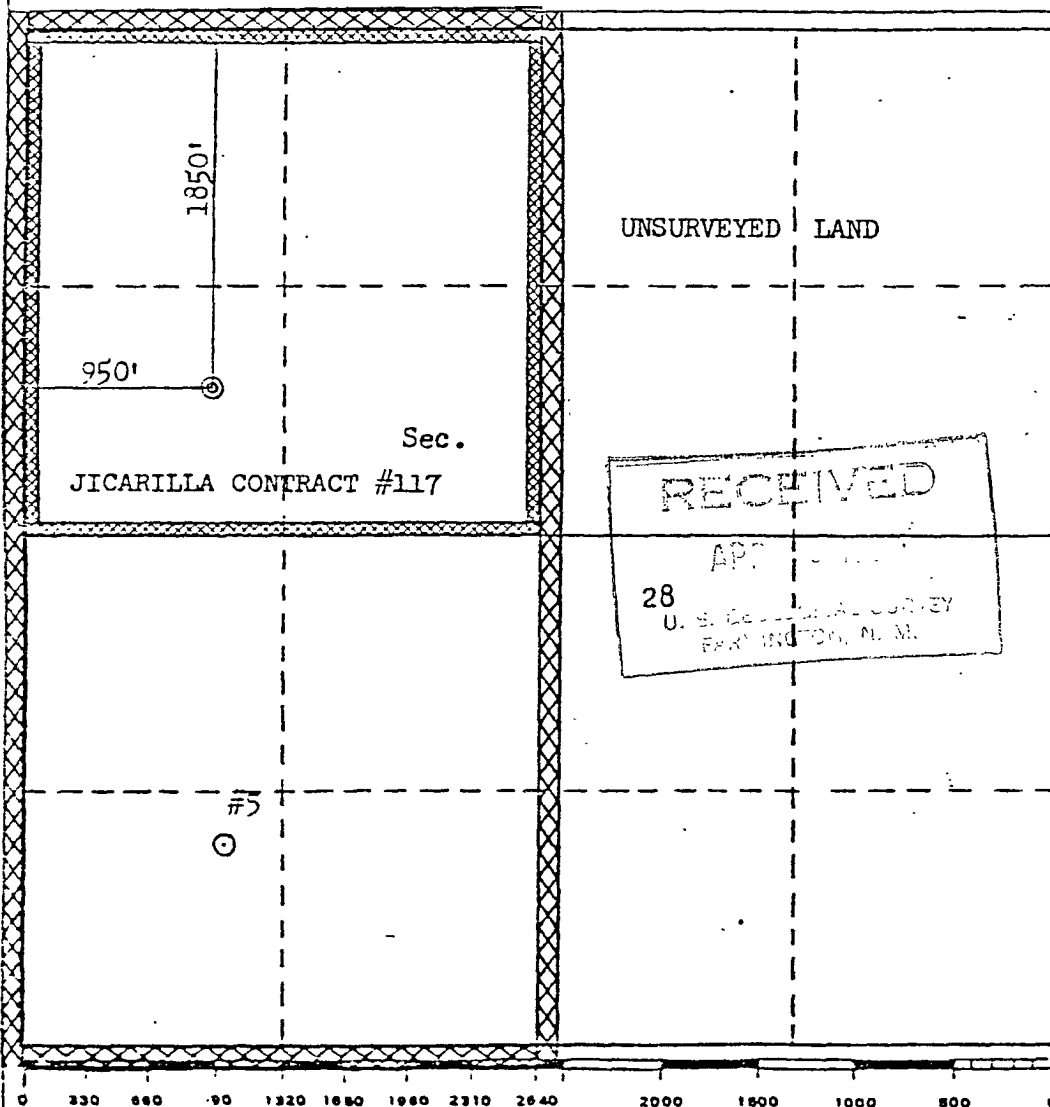
Operator EL PASO EXPLORATION COMPANY			Lease JICARILLA 117 E (JIC. CONTRACT #117)		Well No. 5A
Unit Letter E	Section 28	Township 26N	Range 3W	County Rio Arriba	
Actual Footage Location of Well: 1850 feet from the North line and 950 feet from the West line					
Ground Level Elev. 7308	Producing Formation Pictured Cliffs Mesa Verde		Pool Tapacito Pictured Cliffs Blanco Mesa Verde		Dedicated Acreage: 160.00 & 320.00 Acres

1. Outline the acreage dedicated to the subject well by colored pencil or hachure marks on the plat below.
2. If more than one lease is dedicated to the well, outline each and identify the ownership thereof (both as to working interest and royalty).
3. If more than one lease of different ownership is dedicated to the well, have the interests of all owners been consolidated by communitization, unitization, force-pooling, etc?

☐ Yes ☐ No If answer is "yes," type of consolidation _____

If answer is "no," list the owners and tract descriptions which have actually been consolidated. (Use reverse side of this form if necessary.) _____

No allowable will be assigned to the well until all interests have been consolidated (by communitization, unitization, forced-pooling, or otherwise) or until a non-standard unit, eliminating such interests, has been approved by the Commission.



CERTIFICATION

I hereby certify that the information contained herein is true and complete to the best of my knowledge and belief.

 Name
Drilling Clerk

 Position
El Paso Exploration Co.

 Company
April 15, 1982

Date

I hereby certify that the well location shown on this plat was plotted from field notes of actual surveys made by me or under my supervision, and that the same is true and correct to the best of my knowledge and belief.

Date Surveyed

March 23, 1982

 Registered Professional Engineer
and/or Licensed Surveyor

Fred E. Kerr Jr.

Certificate No.

3950

UNITED STATES
DEPARTMENT OF THE INTERIOR
BUREAU OF LAND MANAGEMENT

Sundry Notices and Reports on Wells

Do not use this form for proposals to drill or to deepen or reentry to a different reservoir. Use "APPLICATION FOR PERMIT-" for such proposals.

FORM APPROVED
Budget Bureau No. 1004-0135
Expires: March 31, 1993

Submit In Triplicate

1. Type of Well:

Gas

2. Name of Operator:

Taurus Exploration U.S.A., Inc.

3. Address and Phone No. of Operator:

2101 Sixth Avenue North
Birmingham, Alabama 32503-2784
(205) 326-2710

4. Location of Well, Footage, Sec. T, R, U:

1850'N 950'W
S:28 T:026N R:003W E

5. Lease Number:

JIC 117

6. If Indian, Allottee or Tribe Name:

Jicarilla

7. Unit Agreement Name:

8. Well Name and Number:

JICARILLA 117 E 5A

9. API Well No.

300392297900

10. Field and Pool:

MV / BLANCO MESAVERDE (PRORATE

11. County and State:

Rio Arriba, New Mexico

12. Check Appropriate Box To Indicate Nature Of Notice, Report, Other Data:

<input type="checkbox"/> Notice of Intent	<input type="checkbox"/> Recompletion	<input type="checkbox"/> Change of Plans
<input type="checkbox"/> Subsequent Report	<input type="checkbox"/> Plugging Back	<input type="checkbox"/> New Construction
<input type="checkbox"/> Final Abandonment	<input type="checkbox"/> Casing Repair	<input type="checkbox"/> Non-Routine Fracturing
<input type="checkbox"/> Abandonment	<input type="checkbox"/> Altering Casing	<input type="checkbox"/> Water Shut Off
<input checked="" type="checkbox"/> Other		<input type="checkbox"/> Conversion to Injection

13. Describe Proposed or Completed Operations

Effective 8/1/97, Taurus Exploration U.S.A., Inc. assumed operations for the above-referenced well.

14. I hereby certify that the foregoing is true and correct.

Signed:

Joe D. Niederhofer

Title: General Manager, San Juan Basin

Date:

12/19/97

(This Space for Federal or State Office Use)

ACCEPTED FOR RECORD

Approved By:

Title:

Date:

Conditions of Approval, if any:

Title 18 U.S.C. Section 1001, makes it a crime for any person knowingly and willfully to make to any department or agency of the United States any false, fictitious or fraudulent statements