

RECEIVED

**UNITED STATES
DEPARTMENT OF THE INTERIOR
BUREAU OF LAND MANAGEMENT**

JUL 21 2008

Bureau of Land Management
Farmington Field Office

Sundry Notices and Reports on Wells

1. **Type of Well**
GAS

2. **Name of Operator**
CONOCOPHILLIPS COMPANY

3. **Address & Phone No. of Operator**

PO Box 4289, Farmington, NM 87499 (505) 326-9700

4. **Location of Well, Footage, Sec., T, R, M**

Unit H (SENE), 1916' FNL & 469' FEL, Section 1, T30N, R06W, NMPM

5. **Lease Number**
NM-012299
6. **If Indian, All. or Tribe Name**
7. **Unit Agreement Name**
San Juan 31-6 Unit
8. **Well Name & Number**
San Juan 31-6 Unit 54
9. **API Well No.**
30-036-26932
10. **Field and Pool**
~~Basin~~ Mancos
Blanco Mesaverde
11. **County and State**
San Juan Co., NM

12. CHECK APPROPRIATE BOX TO INDICATE NATURE OF NOTICE, REPORT, OTHER DATA**Type of Submission**☒ Notice of Intent☐ Subsequent Report☐ Final Abandonment**Type of Action**☐ Abandonment☐ Recompletion☐ Plugging☐ Casing Repair☐ Altering Casing☐ Change of Plans☐ New Construction☐ Non-Routine Fracturing☐ Water Shut off☐ Conversion to Injection☐ Other -Recomplete**13. Describe Proposed or Completed Operations**

ConocoPhillips wishes to recomplete the subject well in the Blanco Mesaverde and down hole commingle with the existing ~~Basin~~ Mancos per the attached procedures. See Mesaverde C-102 previously submitted and dated 6/1/06. DHC C-107A will be applied for. This well has prior NSL approval per permit 5407-A.

RCVD JUL 28 '08

OIL CONS. DIV.

DIST. 3

**SEE ATTACHED FOR
CONDITIONS OF APPROVAL**

14. I hereby certify that the foregoing is true and correct.

Signed Tamra Sessions Tamra Sessions Title Regulatory Technician Date 7/21/2008

(This space for Federal or State Office use)

APPROVED BY [Signature] Title Petr. Eng. Date 7/25/08

CONDITION OF APPROVAL, if any:

Title 18 U.S.C. Section 1001, makes it a crime for any person knowingly and willfully to make any department or agency of the United States any false, fictitious or fraudulent statements or representations as to any matter within its jurisdiction

NMOCD

San Juan 31-6 Unit 54

Unit H, Section 1, Township 30N, Range 06W

API# 3003926932

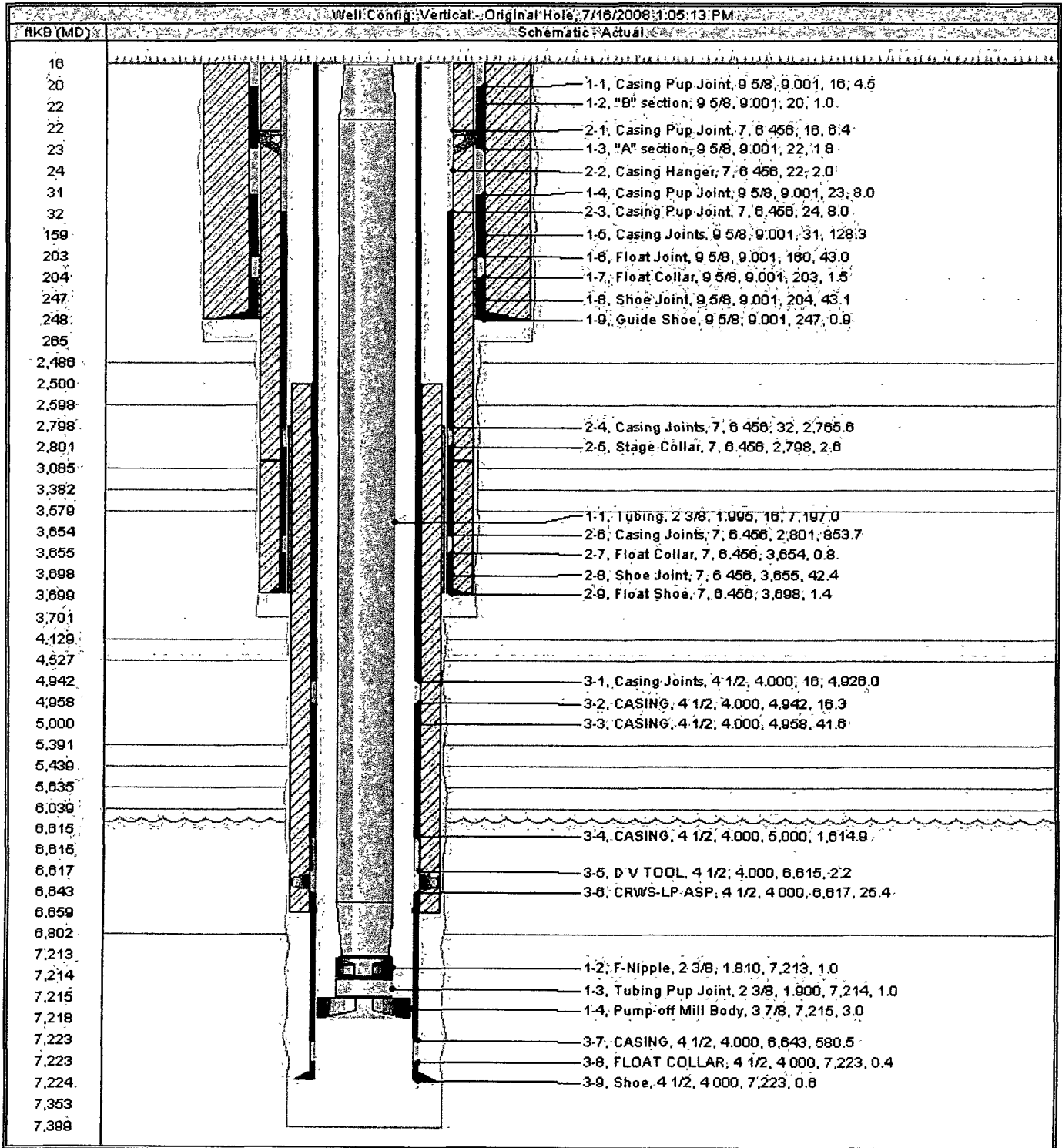
Mesaverde Recompletion Sundry

7/16/2008

Procedure:

1. MIRU service rig. Fish plunger pad from the tubing. TOOH and lay down current production tubing string.
2. Wireline set a 4-1/2" composite bridge plug in the casing above the openhole Mancos section.
3. Run a GR/CCL correlation log. Perforate the first stage Mesaverde (Point Look out & Lower Menefee).
4. Fracture stimulate first stage Mesaverde.
5. RIH and set a composite frac plug above the first stage Mesaverde.
6. Perforate the second stage Mesaverde (Upper Menefee & Cliffhouse).
7. Fracture stimulate the second stage Mesaverde.
8. Flow back fracs on clean-up. RIH and wireline set a composite bridge plug 50ft above top Cliffhouse perf.
9. TIH with a mill and drill out top two composite plugs. Clean out to bottom composite plug.
10. Flow test Mesaverde up casing.
11. TIH with a mill and drill out bottom composite plugs. TOOH.
12. TIH and land production tubing. Get a commingled Mancos / Mesaverde flowrate.
13. Release service rig and turn well over to production.

Current Wellbore Diagram



BLM CONDITIONS OF APPROVAL

CASING REPAIR, WORKOVER AND RECOMPLETION OPERATIONS:

- 1. If casing repair operations are needed, obtain prior approval from this office before commencing repairs.**
- 2. A properly functioning BOP and related equipment must be installed prior to commencing casing repair, workover and/or recompletion operations.**
- 3. If this well is in a Seasonal Closure Area, adhere to closure stipulations.**

SURFACE USE OPERATIONS:

The following Stipulations will apply to this well unless a particular Surface Managing Agency or private surface owner has supplied to BLM and operator a contradictory environmental stipulation. The failure of operator to comply with these requirements may result in assessments or penalties pursuant to 43 CFR 3163.1 or 3163.2. A copy of these conditions of approval shall be present on location during construction, drilling and reclamation activity.

An agreement between operator and fee landowner will take precedence over BLM surface stipulations unless (in reference to 43 CFR Part 3160) 1) BLM determines that operator's actions will affect adjacent Federal or Indian surface, or 2) operator does not maintain well area and lease premises in a workmanlike manner with due regard for safety, conservation and appearance, or 3) no such agreement exists, or 4) in the event of well abandonment, minimal Federal restoration requirements will be required.

STANDARD STIPULATIONS: All surface areas disturbed during work-over activities and not in use for production activities will be reseeded. This should occur in the first 90 days after completion of work-over activities.

SPECIAL STIPULATIONS:

- 1. Pits will be fenced during work-over operation.**
- 2. All disturbance will be kept on existing pad.**
- 3. All pits will be pulled and closed immediately upon completion of the work-over activities.**
- 4. Pits will be lined with an impervious material at least 12 mils thick.**