

UNITED STATES  
DEPARTMENT OF THE INTERIOR  
BUREAU OF LAND MANAGEMENT

APPLICATION FOR PERMIT TO DRILL, DEEPEN, OR PLUG BACK

RECEIVED

1a. Type of Work DRILL	5. Lease Number 2073 MAR 24 PM 1:28 NMSF-080781 Unit Reporting Number 070 Farmington, NM
1b. Type of Well GAS	6. If Indian, All. or Tribe
2. Operator <b>BURLINGTON</b> RESOURCES OIL & GAS COMPANY LP	7. Unit Agreement Name
3. Address & Phone No. of Operator PO Box 4289, Farmington, NM 87499 (505) 326-9700	8. Farm or Lease Name Cain 9. Well Number 725
4. Location of Well 1360' FNL, 2305' FEL Latitude 36° 41.08, Longitude 107° 49.15	10. Field, Pool, Wildcat Basin Fruitland Coal 11. Sec., Twn, Rge, Mer. (NMPM) G Sec. 31, T-29-N, R-9-W API # 30-045-31579
14. Distance in Miles from Nearest Town 13 miles from Bloomfield	12. County San Juan 13. State NM
15. Distance from Proposed Location to Nearest Property or Lease Line 1360'	
16. Acres in Lease	17. Acres Assigned to Well 251.72 N/2
18. Distance from Proposed Location to Nearest Well, Drig, Compl, or Applied for on this Lease 600'	
19. Proposed Depth 2245'	20. Rotary or Cable Tools Rotary
21. Elevations (DF, FT, GR, Etc.) 5726' GR	22. Approx. Date Work will Start
23. Proposed Casing and Cementing Program See Operations Plan attached	
24. Authorized by: <u>Peggy Cole</u> Regulatory/Compliance Supervisor	<u>3-10-03</u> Date

PERMIT NO. \_\_\_\_\_ APPROVAL DATE \_\_\_\_\_  
APPROVED BY \_\_\_\_\_ TITLE \_\_\_\_\_ DATE \_\_\_\_\_

Archaeological Report to be submitted

Threatened and Endangered Species Report to be submitted

NOTE: This format is issued in lieu of U.S. BLM Form 3160-3

Title 18 U.S.C. Section 1001, makes it a crime for any person knowingly and willfully to make to any department or agency of the United States any false, fictitious or fraudulent statements or presentations as to any matter within its jurisdiction.

DRILLING OPERATIONS AUTHORIZED ARE  
SUBJECT TO COMPLIANCE WITH ATTACHED  
"GENERAL REQUIREMENTS".

NMOC

This action is subject to technical and  
procedural review pursuant to 43 CFR 3165.3  
and appeal pursuant to 43 CFR 3165.4

District II  
PO Drawer DD, Artesia, NM 88211-0719

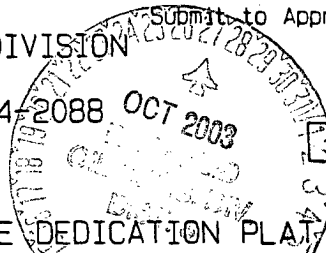
District III  
1000 Rio Brazos Rd., Aztec, NM 87410

District IV  
PO Box 2088, Santa Fe, NM 87504-2088

# OIL CONSERVATION DIVISION

PO Box 2088  
Santa Fe, NM 87504-2088

Instructions on back  
Submit to Appropriate District Office  
State Lease - 4 Copies  
Fee Lease - 3 Copies



AMENDED REPORT

## WELL LOCATION AND ACREAGE DEDICATION PLAT

*API Number 30-045-		*Pool Code 71629	*Pool Name Basin Fruitland Coal
*Property Code 18487	*Property Name CAIN		*Well Number 725
*GRID No. 14538	*Operator Name BURLINGTON RESOURCES OIL & GAS COMPANY, LP		*Elevation 5726'

### 10 Surface Location

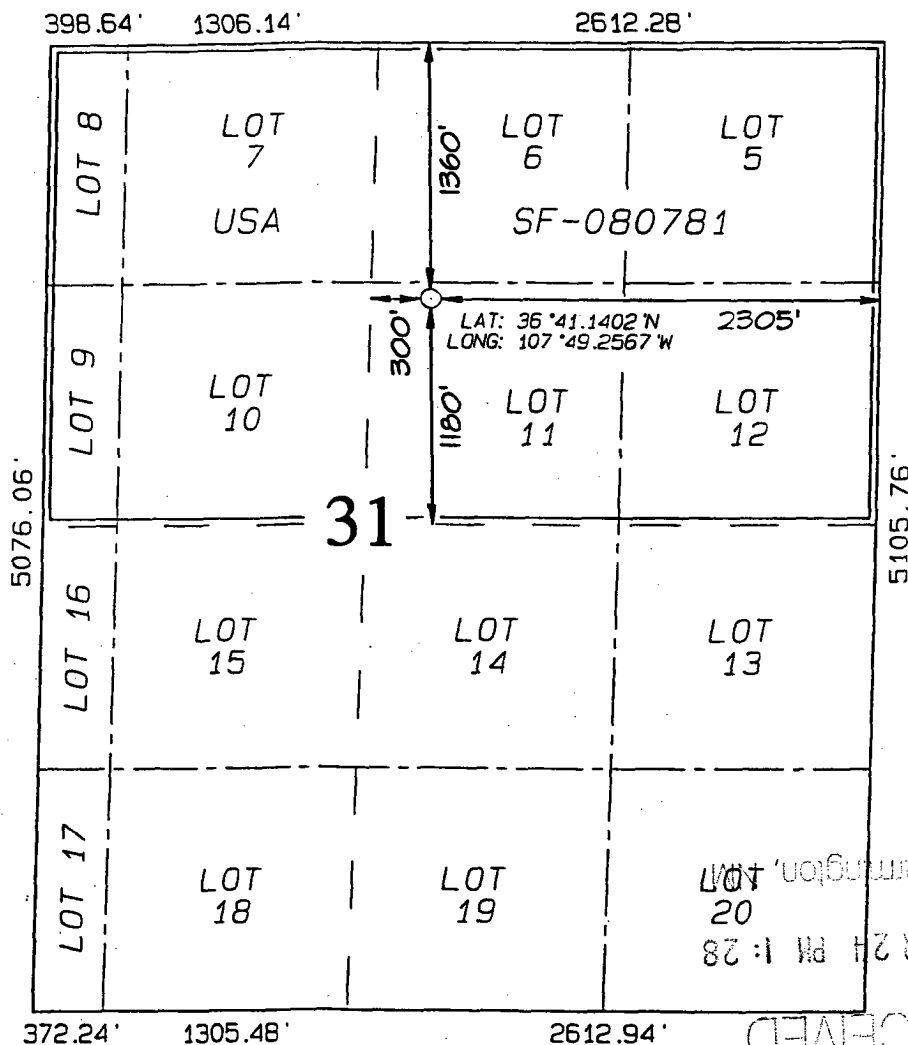
UL or lot no.	Section	Township	Range	Lot Idn	Feet from the	North/South line	Feet from the	East/West line	County
G	31	29N	9W		1360	NORTH	2305	EAST	SAN JUAN

### 11 Bottom Hole Location If Different From Surface

UL or lot no.	Section	Township	Range	Lot Idn	Feet from the	North/South line	Feet from the	East/West line	County

*Dedicated Acres FTC - N/251.72	*Joint or Infill	*Consolidation Code	*Order No.
------------------------------------	------------------	---------------------	------------

NO ALLOWABLE WILL BE ASSIGNED TO THIS COMPLETION UNTIL ALL INTERESTS HAVE BEEN CONSOLIDATED  
OR A NON-STANDARD UNIT HAS BEEN APPROVED BY THE DIVISION



### 17 OPERATOR CERTIFICATION

I hereby certify that the information  
contained herein is true and complete  
to the best of my knowledge and belief

*Peggy Cole*  
Signature

Peggy Cole  
Printed Name

Regulatory Supervisor  
Title

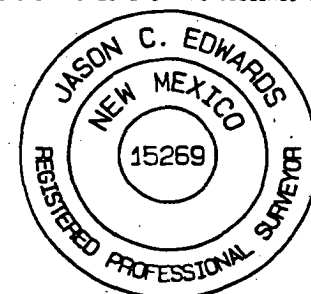
3-10-03  
Date

### 18 SURVEYOR CERTIFICATION

I hereby certify that the well location  
shown on this plat was plotted from field  
notes of actual surveys made by me or under  
my supervision, and that the same is true  
and correct to the best of my belief.

Survey Date: JANUARY 17, 2003

Signature and Seal of Professional Surveyor



JASON C. EDWARDS  
Certificate Number 15269

UNITED STATES  
DEPARTMENT OF THE INTERIOR  
BUREAU OF LAND MANAGEMENT

Sundry Notices and Reports on Wells

1. Type of Well  
GAS

2003 SEP 15 PM 1:39

070 Farmington, NM

2. Name of Operator

**BURLINGTON**

RESOURCES OIL &amp; GAS COMPANY LP

3. Address &amp; Phone No. of Operator

PO Box 4289, Farmington, NM 87499 (505) 326-9700

4. Location of Well, Footage, Sec., T, R, M

1360' FNL, 2305' FEL, Sec. 31, T-29-N, R-9-W, NMPM

5. Lease Number  
NMSF-0783846. If Indian, All. or  
Tribe Name

7. Unit Agreement Name

8. Well Name & Number  
Cain #7259. API Well No.  
30-045-3157910. Field and Pool  
Basin Fruitland Coal11. County and State  
San Juan Co, NM

## 12. CHECK APPROPRIATE BOX TO INDICATE NATURE OF NOTICE, REPORT, OTHER DATA

## Type of Submission

☒ Notice of Intent☐ Subsequent Report☐ Final Abandonment

## Type of Action

☐ Abandonment☐ Recompletion☐ Plugging Back☐ Casing Repair☐ Altering Casing☒ Other -☒ Change of Plans☐ New Construction☐ Non-Routine Fracturing☐ Water Shut off☐ Conversion to Injection

## 13. Describe Proposed or Completed Operations

It is intended to revise the submitted BOP stack for the subject well. Attached is the new BOP diagram and associated choke manifold diagram. This BOP and choke manifold arrangement will be utilized on a smaller, purpose fit, shallow well drilling rig. Surface to total BOP and test pressure data will be changed to the following:

Surface to total depth - 7 1/16" 3000 psi single spherical annular preventer. Prior to drilling out surface casing, test BOP and casing to 400 psi/30 minutes.

## 14. I hereby certify that the foregoing is true and correct.

Signed Nancy Oltramano (EG3) Title Senior Staff Specialist Date 9/11/03  
no

(This space for Federal or State Office use)

APPROVED BY \_\_\_\_\_ Title \_\_\_\_\_

Date OCT 24 2003CONDITION OF APPROVAL David J. Markiewicz

NMOCB

## OPERATIONS PLAN

Well Name: Cain #725  
Location: 1360' FNL, 2305' FEL Section 31, T-29-N, R-9-W  
Latitude 36° 41.1402, Longitude 107° 49.2567  
San Juan County, NM  
Formation: Basin Fruitland Coal  
Elevation: 5726' GL

Formation:	Top	Bottom	Contents
Surface	San Jose	912'	
Ojo Alamo	912'	1076'	aquifer
Kirtland	1076'	1732'	gas
Fruitland	1732'	2044'	gas
Base of Basal Coal	2044'	2045'	gas
Pictured Cliffs	2045'		gas
Total Depth	2245'		

Logging Program: Platform Express from TD to surface.

Mudlog: 1076' to TD.

Coring Program: none

### Mud Program:

Interval	Type	Weight	Vis.	Fluid Loss
0- 120'	Spud	8.4-9.0	40-50	no control
120-2245'	Non-dispersed	8.4-9.5	30-60	no control

### Casing Program (as listed, the equivalent, or better):

Hole Size	Depth Interval	Csg. Size	Wt.	Grade
8 3/4"	0' - 120'	7"	20.0#	J-55
6 1/4"	0' - 2245'	4 1/2"	10.5#	J-55

### Tubing Program:

0' - 2245'	2 3/8"	4.7#	J-55
------------	--------	------	------

Float Equipment: 7" surface casing - saw tooth guide shoe.  
Centralizers will be run in accordance with Onshore Order #2.

4 1/2" production casing - guide shoe and self-fill float collar. Three centralizers run every fourth joint above shoe. Two turbolizing type centralizers - one below and one into the base of the Ojo Alamo @ 1076'. Standard centralizers thereafter every fourth joint up to the base of the surface pipe.

Wellhead Equipment: 7" x 4 1/2" x 2 3/8" x 11" 2000 psi xmas tree assembly.

Cain #725

**Cementing:**

7" surface casing - cement with 38 sx Class "B" Type III cement with 0.25 pps Celloflake and 3% calcium chloride (54 cu.ft. of slurry, 200% excess to circulate to surface). WOC 24 hours for pre-set holes or 8 hours for conventionally set holes before pressure testing or drilling out from under surface casing. Test casing to 600 psi/30 minutes.

4 1/2" production casing - lead w/103 sacks Premium Lite cement with 3% calcium chloride, 0.25 pps Celloflake, 5 pps LCM-1, 0.4% fluid loss, 0.4% sodium metasilicate. Tail with 90 sacks Type III cement with 1% calcium chloride, 0.25 pps Celloflake, 0.2% fluid loss (345 cu.ft., 50% excess to circulate to surface).

4 1/2" production casing alternative two stage: Stage collar 1632'. First stage: cement with w/68 sx Type III cmt w/1% calcium chloride, 0.25 pps Flocele, 0.2% fluid loss. Second stage: 117 sx Premium Lite cmt with 3% calcium chloride, 0.25 pps Flocele, 5 ps LCM-1, 0.4% fluid loss, 0.4% SMS (345 cu.ft., 50% excess to circulate to surface).

Note: If open hole logs are run, cement volumes will be based on 25% excess over caliper volumes.

**BOP and tests:**

Surface to TD - 11" 2000 psi (minimum) double gate BOP stack (Reference Figure #1). Prior to drilling out surface casing, test rams to 600#/30 min.

Completion - 7 1/6" 2000 psi (minimum) double gate BOP stack (Reference Figure #2). Prior to completion operations, test blind rams and casing to 1500 psi for 30 minutes; all pipe rams and casing to 1500 psi for 30 minutes each.

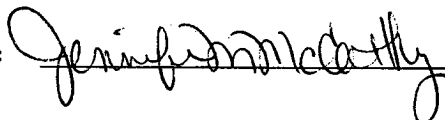
From surface to TD - choke manifold (Reference Figure #3).

Pipe rams will be actuated at least once each day and blind rams actuated once each trip to test proper functioning. An upper kelly cock valve with handle and drill string safety valves to fit each drill string will be maintained and available on the rig floor.

**Additional information:**

- \* The Fruitland Coal formation will be completed.
- \* Anticipated pore pressure for the Fruitland is 570 psi.
- \* This gas is dedicated.
- \* The north half of section 31 is dedicated to the Fruitland Coal.

Drilling Engineer:



Date:

3/13/03

# Drilling Rig

## 3000 psi BOP System

