

UNITED STATES
DEPARTMENT OF THE INTERIOR
BUREAU OF LAND MANAGEMENT

APPLICATION FOR PERMIT TO DRILL, DEEPEN, OR PLUG BACK

RECEIVED

1a. Type of Work DRILL	5. Lease Number NMNM019413 Unit Reporting Number 070 Farmington, NM
1b. Type of Well GAS	6. If Indian, All. or Tribe
2. Operator BURLINGTON RESOURCES Oil & Gas Company	7. Unit Agreement Name 3380
3. Address & Phone No. of Operator PO Box 4289, Farmington, NM 87499 (505) 326-9700	8. Farm or Lease Name McDurrmitt Com Well Number 100
4. Location of Well 1795' FNL, 1655' FEL Latitude 36° 55.8187'N, Longitude 108° 07.9700'W	10. Field, Pool, Wildcat Basin Fruitland Coal 11. Sec., Twn, Rge, Mer. (NMPM) G Sec. 6, T-31-N, R-12-W API # 30-045-31809
14. Distance in Miles from Nearest Town 4 miles to La Plata	12. County San Juan 13. State NM
15. Distance from Proposed Location to Nearest Property or Lease Line 1655'	
16. Acres in Lease	17. Acres Assigned to Well 312.76 N2
18. Distance from Proposed Location to Nearest Well, Drlg, Compl, or Applied for on this Lease 20'	
19. Proposed Depth 2402'	20. Rotary or Cable Tools Rotary
21. Elevations (DF, FT, GR, Etc.) 5955' GR	22. Approx. Date Work will Start
23. Proposed Casing and Cementing Program See Operations Plan attached	
24. Authorized by: <u><i>Pepper Cole</i></u> Regulatory/Compliance Supervisor	Date <u>7-9-03</u>

PERMIT NO. _____ APPROVAL DATE _____

APPROVED BY *David J. Markowicz* TITLE _____ DATE OCT 27 2003

Archaeological Report to be submitted

Threatened and Endangered Species Report to be submitted

NOTE: This format is issued in lieu of U.S. BLM Form 3160-3

Title 18 U.S.C. Section 1001, makes it a crime for any person knowingly and willfully to make to any department or agency of the United States any false, fictitious or fraudulent statements or presentations as to any matter within its jurisdiction.

DRILLING OPERATIONS AUTHORIZED ARE
SUBJECT TO COMPLIANCE WITH ATTACHED
"GENERAL REQUIREMENTS".

NMOC

This action is subject to technical and
procedural review pursuant to 43 CFR 3165.8
and appeal pursuant to 43 CFR 3165.4

District II
PO Drawer DD, Artesia, NM 88211-0719

OIL CONSERVATION DIVISION
PO Box 2088
Santa Fe, NM 87504-2088

District III
1000 Rio Brazos Rd., Aztec, NM 87410

District IV
PO Box 2088, Santa Fe, NM 87504-2088

☐ AMENDED REPORT

WELL LOCATION AND ACREAGE DEDICATION PLAT

*API Number 30-045-		*Pool Code 71629	*Pool Name Basin Fruitland Coal
*Property Code 33080	*Property Name McDURMITT COM		*Well Number 100
*OGRID No. 14538	*Operator Name BURLINGTON RESOURCES OIL & GAS COMPANY, LP		*Elevation 5955'

10 Surface Location

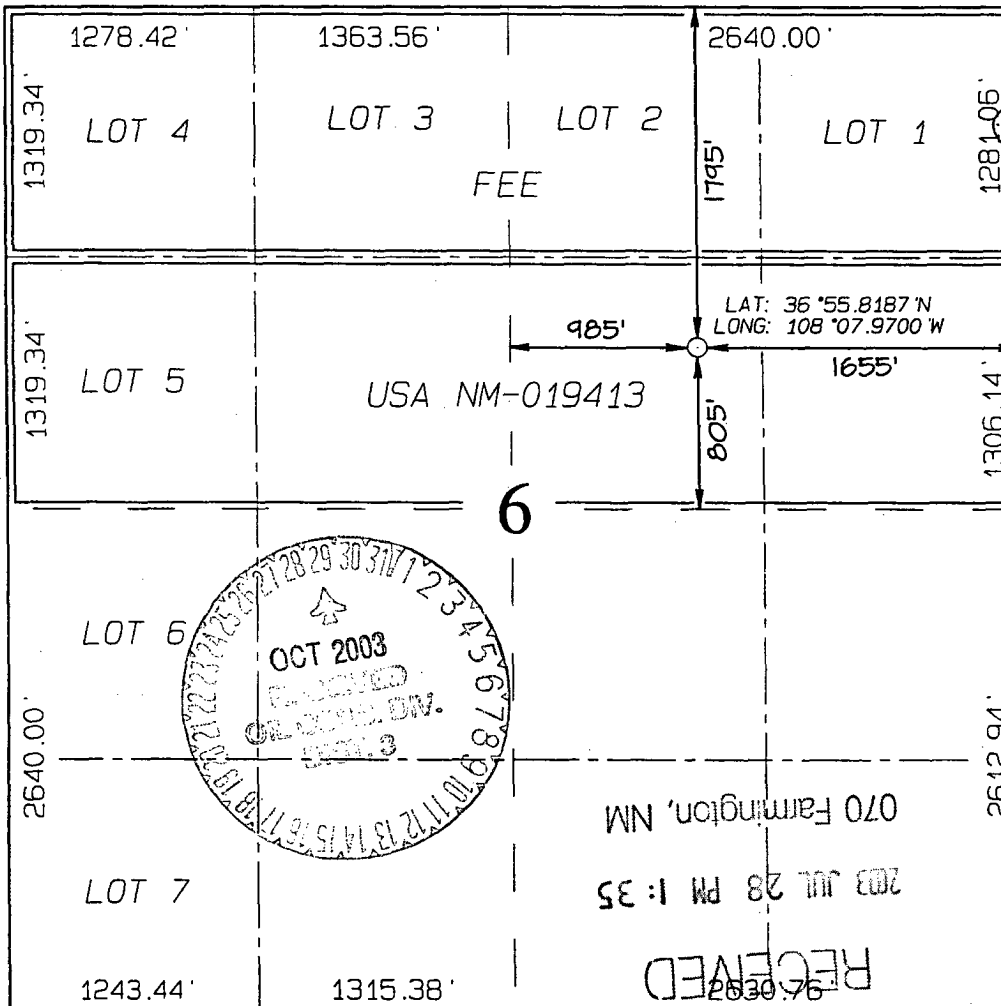
UL or lot no.	Section	Township	Range	Lot Idn	Feet from the	North/South line	Feet from the	East/West line	County
G	6	31N	12W		1795	NORTH	1655	EAST	SAN JUAN

11 Bottom Hole Location If Different From Surface

UL or lot no.	Section	Township	Range	Lot Idn	Feet from the	North/South line	Feet from the	East/West line	County

12 Dedicated Acres N/312.76	13 Joint or Infill	14 Consolidation Code	15 Order No.
--------------------------------	--------------------	-----------------------	--------------

NO ALLOWABLE WILL BE ASSIGNED TO THIS COMPLETION UNTIL ALL INTERESTS HAVE BEEN CONSOLIDATED
OR A NON-STANDARD UNIT HAS BEEN APPROVED BY THE DIVISION



17 OPERATOR CERTIFICATION

I hereby certify that the information contained herein is true and complete to the best of my knowledge and belief

Signature
Peggy Cole

Printed Name

Regulatory Supervisor

Title

Date
7-9-03

18 SURVEYOR CERTIFICATION

I hereby certify that the well location shown on this plat was plotted from field notes of actual surveys made by me or under my supervision, and that the same is true and correct to the best of my belief.

Date of Survey: MAY 2, 2003

Signature and Seal of Professional Surveyor



JASON C. EDWARDS
Certificate Number 15269

OPERATIONS PLAN

Well Name: McDurmitt Com #100
Location: 1795' FNL, 1655' FEL Section 6, T-31-N, R-12-W
Latitude 36° 55.8187' N, Longitude 108° 07.9700' W
San Juan County, NM
Formation: Basin Fruitland Coal
Elevation: 5955' GL

Formation:	Top	Bottom	Contents
Surface	San Jose	1351'	
Ojo Alamo	1351'	1421'	aquifer
Kirtland	1421'	1711'	
Fruitland	1711'	1992'	gas
Fruitland Coal	1992'	2200'	gas
B/Coal	2200'	2202'	gas
Pictured Cliffs	2202'		gas
Total Depth	2402'		

Logging Program: none
Mud log: none
Coring Program: none

Mud Program:

<u>Interval</u>	<u>Type</u>	<u>Weight</u>	<u>Vis.</u>	<u>Fluid Loss</u>
0- 120'	Spud	8.4-9.0	40-50	no control
120-2402'	Non-dispersed	8.4-9.5	30-60	no control

Casing Program (as listed, the equivalent, or better):

<u>Hole Size</u>	<u>Depth Interval</u>	<u>Csg. Size</u>	<u>Wt.</u>	<u>Grade</u>
8 3/4"	0' - 120'	7"	20.0#	J-55
6 1/4"	0' - 2402'	4 1/2"	10.5#	J-55

Tubing Program:

0' - 2402'	2 3/8"	4.7#	J-55
------------	--------	------	------

Float Equipment: 7" surface casing - saw tooth guide shoe. Centralizers will be run in accordance with Onshore Order #2.

4 1/2" production casing - guide shoe and self-fill float collar. Standard centralizers run every other joint above shoe. Two turbolizing type centralizers - one below and one into the base of the Ojo Alamo @ 1421'. Standard centralizers thereafter every fourth joint up to the base of the surface pipe.

Wellhead Equipment: 7" x 4 1/2" x 2 3/8" x 11" 2000 psi screw on independent wellhead.

Cementing:

7" surface casing - cement with 38 sx Class "B" Type III cement with 0.25 pps Celloflake and 3% calcium chloride (54 cu.ft. of slurry, 200% excess to circulate to surface). WOC 24 hours for pre-set holes or 8 hours for conventionally set holes before pressure testing or drilling out from under surface casing. Test casing to 600 psi for 30 minutes.

4 1/2" production casing - Lead w/115 sx Premium Lite cement w/3% calcium chloride, 1/4 pps Cello-flake, 5 pps LCM-1, 0.4% FL-52, and 0.4% SMS. Tail w/90 sx Type III cement w/1% calcium chloride, 1/4 pps Cello-flake, and 0.2% FL-52 (370 cu.ft. of slurry, 50% excess to circulate to surface.) If cement is not circulated to surface, a temperature survey or CBL will be run during drilling or completion operations to determine TOC.

Note: If open hole logs are run, cement volumes will be based on 25% excess over caliper volumes.

BOP and tests:

Surface to TD - 11" 2000 psi (minimum double gate BOP stack (Reference Figure #1). Prior to drilling out surface casing, test rams to 600 psi/30 min.

Completion - 7 1/16" 2000 psi (minimum) double gate BOP stack (Reference Figure #2). Prior to completion operations, test rams and casing to 2000 psi/15 min.

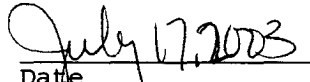
From surface to TD - choke manifold (Reference Figure #3).

Pipe rams will be actuated at least once each day and blind rams actuated once each trip to test proper functioning. An upper kelly cock valve with handle and drill string safety valves to fit each drill string will be maintained and available on the rig floor.

Additional information:

- * The Fruitland Coal formation will be completed and commingled.
- * Anticipated pore pressure for the Fruitland is 500 psi.
- * This gas is dedicated.
- * The north half of Section 6 is dedicated to the Fruitland Coal.


Drilling Engineer


Date