

**UNITED STATES
DEPARTMENT OF THE INTERIOR
BUREAU OF LAND MANAGEMENT**

RECEIVED

OCT 01 2008

Sundry Notices and Reports on Wells

Bureau of Land Management
Farmington Field Office

- | | |
|--|---|
| 1. Type of Well
GAS | 5. Lease Number
SF-080673 |
| 2. Name of Operator
BURLINGTON
RESOURCES OIL & GAS COMPANY LP | 6. If Indian, All. or
Tribe Name |
| 3. Address & Phone No. of Operator

PO Box 4289, Farmington, NM 87499 (505) 326-9700 | 7. Unit Agreement Name
San Juan 27-4 Unit |
| 4. Location of Well, Footage, Sec., T, R, M

Unit A (NENE), 1190' FNL & 1065' FEL, Section 7, T27N, R04W, NMPM | 8. Well Name & Number
San Juan 27-4 Unit 5 |
| | 9. API Well No.

30-039-07136 |
| | 10. Field and Pool
Basin Dakota |
| | 11. County and State
Rio Arriba Co., NM |

12. CHECK APPROPRIATE BOX TO INDICATE NATURE OF NOTICE, REPORT, OTHER DATA

Type of Submission

Type of Action

☒ Notice of Intent☐ Abandonment☐ Change of Plans☒ Other - PA☐ Subsequent Report☐ Recompletion☐ New Construction☐ Final Abandonment☐ Plugging☐ Non-Routine Fracturing☐ Casing Repair☐ Water Shut off☐ Altering Casing☐ Conversion to Injection**13. Describe Proposed or Completed Operations**

Burlington Resources wishes PA the subject well per the attached procedure.

Attached - Wellbore schematics

RCUD OCT 3 '08

OIL CONS. DIV.

DIST. 3

14. I hereby certify that the foregoing is true and correct.Signed Tracey N. Monroe Tracey N. Monroe Title Staff Regulatory Technician Date 9/30/08

(This space for Federal or State Office use)

APPROVED BY Original Signed: Stephen Mason Title _____ Date OCT 01 2008

CONDITION OF APPROVAL, if any:

Title 18 U.S.C. Section 1001, makes it a crime for any person knowingly and willfully to make any department or agency of the United States any false, fictitious or fraudulent statements or representations as to any matter within its jurisdiction

NMOCD

PLUG AND ABANDONMENT PROCEDURE

September 17, 2008

San Juan 27-4 Unit #5

Basin Dakota

1190' FNL & 1065' FEL Section 7, T-27-N, R-4-W

Lat : 36°35'29.256" N Long : 107°17'8.556" W

Rio Arriba, NM API #30-039-07136

Note: All cement volumes use 100% excess outside pipe and 50' excess inside. The stabilizing wellbore fluid will be 8.3 ppg, sufficient to balance all exposed formation pressures. All cement will be Class B, mixed at 14.8 ppg with a 1.18 cf/sx yield.

1. This project requires a NMOCD C-144 CLEZ Closed-Loop System Permit for the use of an A-Plus steel tank to handle waste fluids circulated from the well and cement wash up.
2. Install and test location rig anchors. Comply with all NMOCD, BLM, and Operator safety regulations. MOL and RU daylight pulling unit. Conduct safety meeting for all personnel on location. Record casing, tubing and bradenhead pressures. NU relief line and blow down well. Kill well with water as necessary and at least pump tubing capacity of water down the tubing. ND wellhead and NU BOP. Function test BOP.
3. Rods: Yes____, No X, Unknown____.
Tubing: Yes X, No____, Unknown____, Size 2.375, Length 8054.
Packer: Yes____, No X, Unknown____, Type____.
If this well has rods or a packer, then modify the work sequence in step #2 as appropriate.
4. **Plug #1 (Dakota interval, 8073' – 7984')**: RIH and tag plugback as depth as possible. Load casing with water and circulate well clean. Pressure test casing to 1000#. *If casing does not test, then spot or tag subsequent plugs as appropriate.* Mix 27 sxs cement and spot a balanced plug inside casing to isolate the Dakota interval. PUH
5. **Plug #2 (Gallup top, 7075' – 6975')**: Mix and pump 29 sxs cement inside casing to cover the Gallup top. TOH with tubing.
6. **Plug #3 (Mesaverde top, ^{4443'} 5570' – ^{4343'} 5470')**: Perforate 3 HSC squeeze holes at ^{4443'} 5570'. If casing tests, then establish rate into squeeze holes. Set a 7" CR at 5520'. Establish rate into squeeze holes. Mix and pump 55 sxs cement, squeeze 26 sxs outside casing and leave 29 sxs inside casing to cover the Mesaverde top. TOH with tubing.
7. **Plug #4 (9.625" casing shoe, Pictured Cliffs and Fruitland tops, 4017' – ⁶⁰ 3585')**: Perforate 3 HSC squeeze holes at 4017'. If casing tests, then establish rate into squeeze holes. Set a 7" CR at 3967. Establish rate into squeeze holes. Mix and pump ~~168~~ sxs cement, squeeze ~~77~~ sxs outside casing and leave ~~91~~ sxs inside casing to cover through the Fruitland top. TOH with tubing.
8. **Plug #5 (Kirtland and Ojo Alamo tops, ³¹⁶¹ 3444' – ³¹⁶¹ 3235')**: Perforate 3 HSC squeeze holes at 3344'. If casing tests, then establish rate into squeeze holes. Set a 7" CR at 3394. Establish rate into squeeze holes. Mix and pump ~~79~~ sxs cement, squeeze ~~30~~ sxs outside casing and leave ~~49~~ sxs inside casing to cover through the Ojo Alamo top. TOH with tubing.
8. **Plug #6 (Nacimiento top, ^{2053'} 2013' – ^{1953'} 1913')**: Perforate 3 HSC squeeze holes at ^{2053'} 2013'. If casing tests, then establish rate into squeeze holes. Set a 7" CR at 1963. Establish rate into squeeze holes. Mix and pump 105 sxs cement, squeeze 22 sxs outside 7" x 9.625" casing, 55 sxs outside 9.625" x 12.25" annulus and leave 29 sxs inside casing to cover the Nacimiento top. TOH and LD tubing.

9. **Plug #7 (13.375" casing shoe, 215' – 0')**: Perforate 3 squeeze holes at 215'. Establish circulation out bradenhead with water and circulate the BH annulus clean. Mix approximately 220 sxs cement and pump down the 7" casing to circulate good cement out casing annulus and bradenhead. Shut in well and WOC.
10. ND BOP and cut off casing below surface casing flange. Install P&A marker with cement to comply with regulations. RD, move off location, cut off anchors and restore location.

San Juan 27- 4 Unit #5

Current

Basin Dakota

1190' FNL, 1065' FEL, Section 7, T-27-N, R-4-W

Rio Arriba County, NM, API #30-039-07136

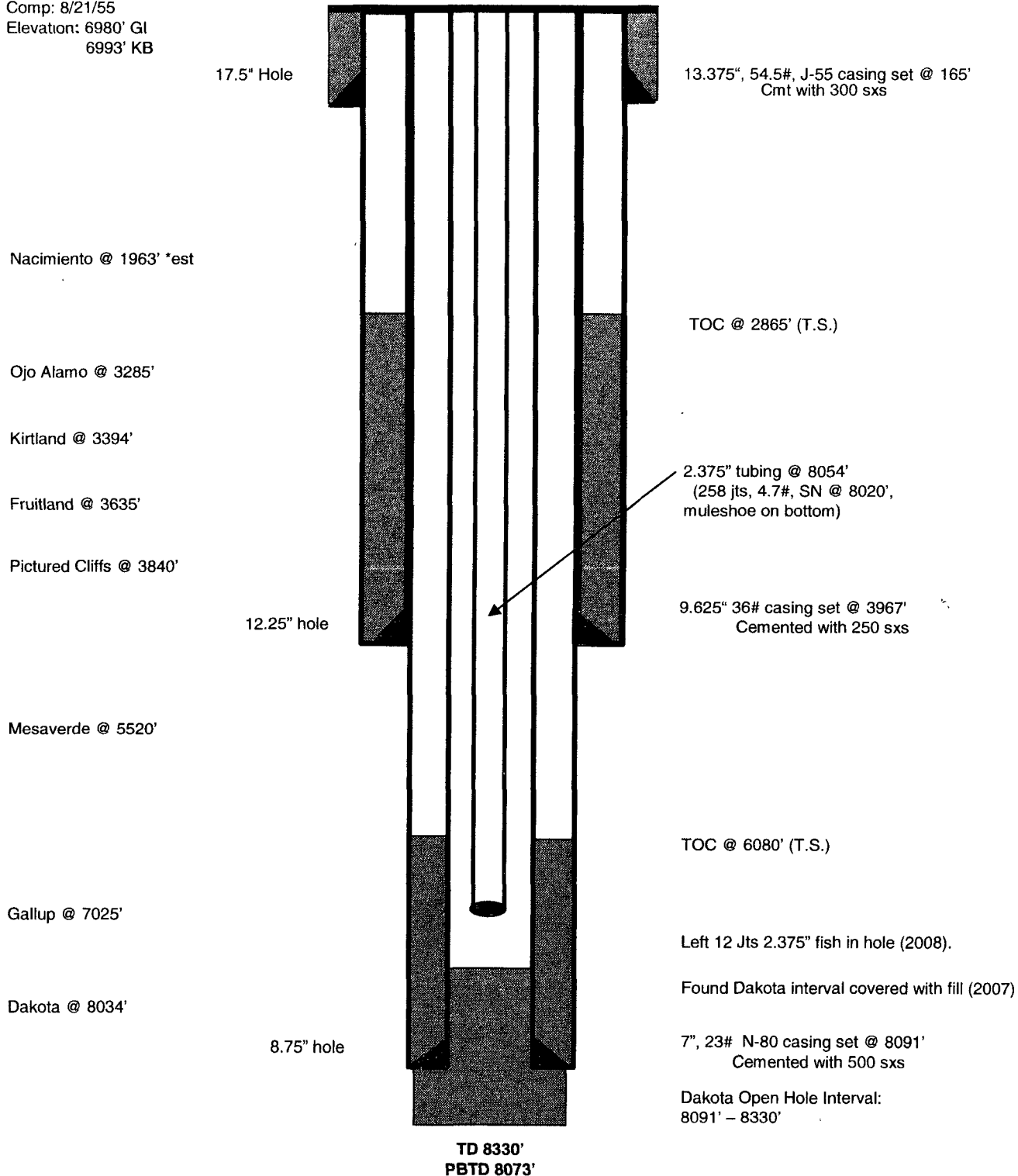
Lat: 36°35'29.256" N / Long: 107°17'8.556" W

Today's Date: 9/17/08

Spud: 7/16/55

Comp: 8/21/55

Elevation: 6980' GI
6993' KB



San Juan 27- 4 Unit #5

Proposed P&A

Basin Dakota

1190' FNL, 1065' FEL, Section 7, T-27-N, R-4-W

Rio Arriba County, NM, API #30-039-07136

Lat: 36°35'29.256" N / Long: 107°17'8.556" W

Today's Date: 9/17/08

Spud: 7/16/55

Comp: 8/21/55

Elevation: 6980' GI

6993' KB

17.5" Hole

Nacimiento @ 1963' *est

Ojo Alamo @ 3285'

Kirtland @ 3394'

Fruitland @ 3635'

Pictured Cliffs @ 3840'

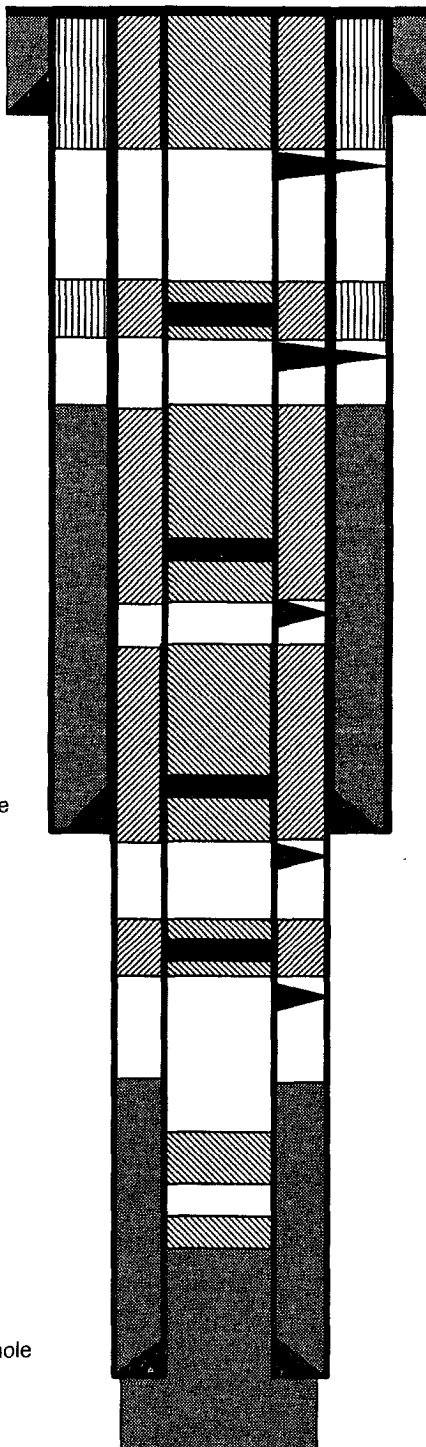
12.25" hole

Mesaverde @ 5520'

Gallup @ 7025'

Dakota @ 8034'

8.75" hole



Plug #7: 215' - 0'

Class B cement, 220 sxs

13.375", 54.5#, J-55 casing set @ 165'
Cmt with 300 sxs

Perforate @ 215'

Plug #6: 2013' - 1913'

Class B cement, 105 sxs:
29 Inside and 22 outside 7" x
9.625" and 55 outside 9.625" x
12.25"

Cement Retainer @ 1963'

Perforate @ 2013'

TOC @ 2865' (T.S.)

Plug #5: 3444 - 3235'

Class B cement, 79 sxs:
49 Inside and 30 outside

Cement Retainer @ 3394'

Perforate @ 3444'

Plug #4: 4017' - 3585'

Class B cement, 168 sxs:
91 Inside and 77 outside

9.625" 36# casing set @ 3967'
Cemented with 250 sxs

Cement Retainer @ 3967'

Perforate @ 4017'

Plug #3: 5570' - 5470'

Class B cement, 55 sxs:
29 Inside and 26 outside

Cement Retainer @ 5520'

Perforate @ 5570'

TOC @ 6080' (T.S.)

Plug #2: 7075' - 6975'

Class B cement, 29 sxs

Plug #1: 8073' - 7984'

Class B cement, 27 sxs

Left 12 Jts 2.375" fish in hole (2008).

Found Dakota interval covered with fill (2007)

7", 23# N-80 casing set @ 8091'
Cemented with 500 sxs

Dakota Open Hole Interval:
8091' - 8330'

TD 8330'
PBDT 8073'

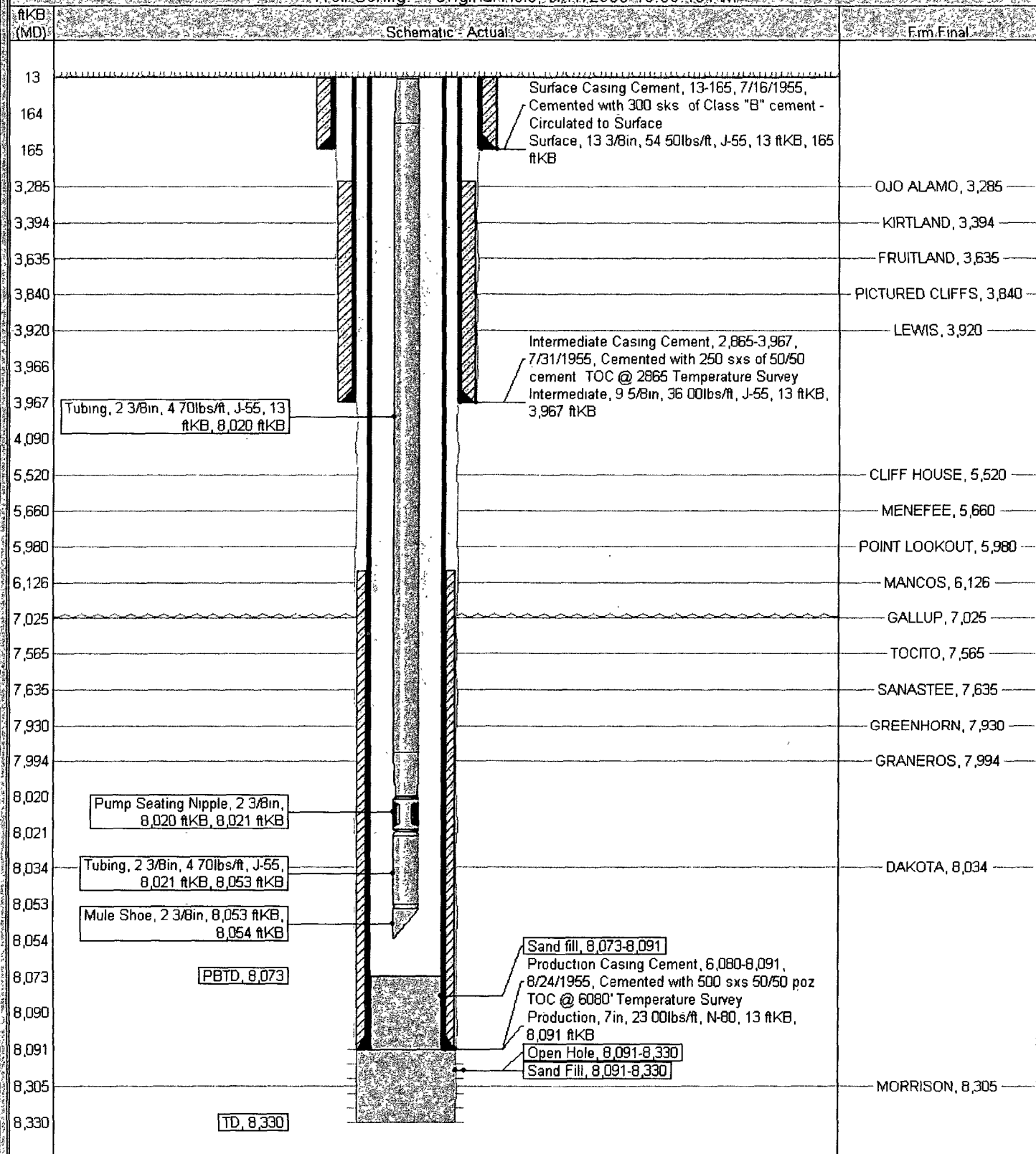
Current Schematic

ConocoPhillips

Well Name: SAN JUAN 27-4 UNIT #5

API / UWI 3003907136	Surface Legal Location NMPM,007-027N-004W	Field Name BASIN DAKOTA (PROBATED GAS)	License No	State/Province NEW MEXICO	Well Configuration Type Edit
Ground Elevation (ft) 6,980.00	Original KB/RT Elevation (ft) 6,993.00	KB-Ground Distance (ft) 13.00	KB-Casing/Flange Distance (ft)	KB-Tubing Hanger Distance (ft)	

Well Config: Original Hole: 9/17/2008 10:00:40 AM



**UNITED STATES DEPARTMENT OF THE INTERIOR
BUREAU OF LAND MANAGEMENT
FARMINGTON DISTRICT OFFICE
1235 LA PLATA HIGHWAY
FARMINGTON, NEW MEXICO 87401**

Attachment to notice of
Intention to Abandon:

Re: Permanent Abandonment
Well: 5 San Juan 27-4 Unit

CONDITIONS OF APPROVAL

1. Plugging operations authorized are subject to the attached "General Requirements for Permanent Abandonment of Wells on Federal and Indian Lease."
2. Farmington Office is to be notified at least 24 hours before the plugging operations commence (505) 599-8907.
3. The following modifications to your plugging program are to be made:
 - a) Place the Mesaverde plug from 4443' – 4343' inside and outside the 7" casing.
 - b) Place the Pictured Cliffs/Fruitland plug from 4017' - 3560' inside and outside the 7" casing.
 - c) Place the Kirtland/Ojo Alamo plug from 3444' – 3161' inside and outside the 7" casing.
 - d) Place the Nacimiento plug from 2053' – 1953' inside and outside the 7" and 9 5/8" casings.

You are also required to place cement excesses per 4.2 and 4.4 of the attached General Requirements.

Office Hours: 7:45 a.m. to 4:30 p.m.