

District I
1625 N French Dr., Hobbs, NM 88240

District II
1301 W. Grand Avenue, Artesia, NM 88210

District III
1000 Rio Brazos Rd., Aztec, NM 87410

District IV
1220 S St. Francis Dr., Santa Fe, NM 87505

State of New Mexico
Energy, Minerals & Natural Resources Department

OIL CONSERVATION DIVISION
1220 South St. Francis Dr.
Santa Fe, NM 87505

Form C-102
Revised October 12, 2005
Instructions on back
Submit to Appropriate District Office
State Lease - 4 Copies
Fee Lease - 3 Copies

AMENDED REPORT
"As Drilled"

WELL LOCATION AND ACREAGE DEDICATION PLAT

¹ API Number 30-039-30556		² Pool Code 71629	³ Pool Name BASIN FRUITLAND COAL
⁴ Property Code 17033	⁵ Property Name ROSA UNIT		⁶ Well Number 360A
⁷ OGRID No. 120782	⁸ Operator Name WILLIAMS PRODUCTION COMPANY		⁹ Elevation 6814'

¹⁰ Surface Location

UL or lot no.	Section	Township	Range	Lot Idn	Feet from the	North/South line	Feet from the	East/West line	County
G	9	31N	5W		1470	NORTH	2095	EAST	RIO ARRIBA

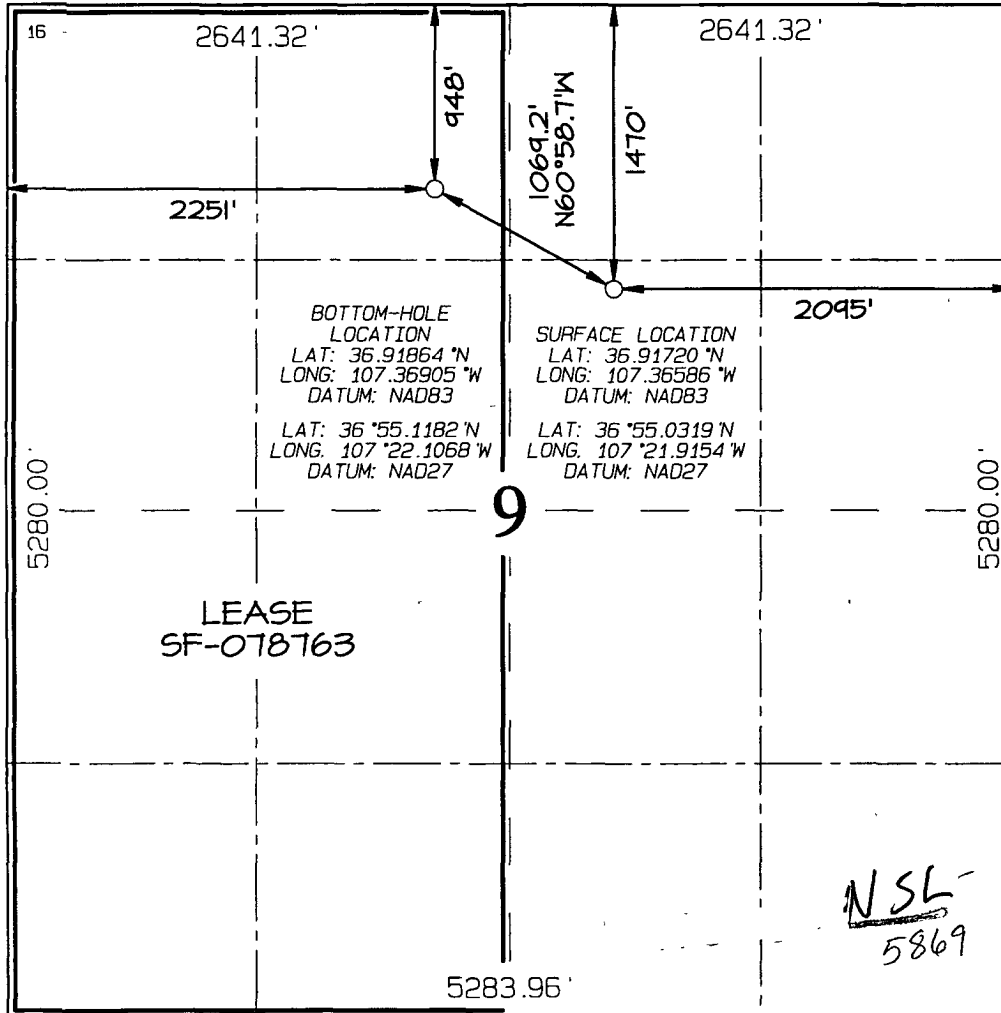
¹¹ Bottom Hole Location If Different From Surface

UL or lot no.	Section	Township	Range	Lot Idn	Feet from the	North/South line	Feet from the	East/West line	County
C	9	31N	5W		948	NORTH	2251	WEST	RIO ARRIBA

¹² Dedicated Acres 320.0 Acres - (W/2)	¹³ Joint or Infill	¹⁴ Consolidation Code	¹⁵ Order No RCUD OCT 8 '08 OIL CONC RTU
--	-------------------------------	----------------------------------	--

10-9-08

NO ALLOWABLE WILL BE ASSIGNED TO THIS COMPLETION UNTIL ALL INTERESTS HAVE BEEN CONSOLIDATED OR A NON-STANDARD UNIT HAS BEEN APPROVED BY THE DIVISION DIST. 3

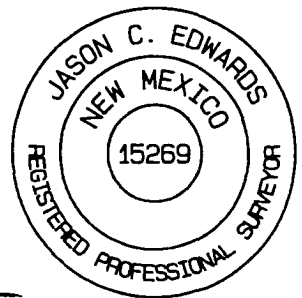


¹⁷ OPERATOR CERTIFICATION
I hereby certify that the information contained herein is true and complete to the best of my knowledge and belief, and that this organization either owns a working interest or unleased mineral interest in the land including the proposed bottom-hole location or has a right to drill this well at this location pursuant to a contract with an owner of such a mineral or working interest, or to a voluntary pooling agreement or a compulsory pooling order heretofore entered by the division

Larry Higgins 10-7-08
Signature Date
LARRY HIGGINS
Printed Name

¹⁸ SURVEYOR CERTIFICATION
I hereby certify that the well location shown on this plat was plotted from field notes of actual surveys made by me or under my supervision, and that the same is true and correct to the best of my belief.

Date of Survey: JUNE 9, 2005
Signature and Seal of Professional Surveyor



JASON C. EDWARDS
Certificate Number 15269

NSL-5869