

State of New Mexico  
Energy Minerals and Natural Resources

Department  
Oil Conservation Division  
1220 South St. Francis Dr.  
Santa Fe, NM 87505

For temporary pits, closed-loop systems, and below-grade tanks, submit to the appropriate NMOCD District Office.

For permanent pits and exceptions submit to the Santa Fe Environmental Bureau office and provide a copy to the appropriate NMOCD District Office

1836

Pit, Closed-Loop System, Below-Grade Tank, or  
Proposed Alternative Method Permit or Closure Plan Application

- Type of action: ☐ Permit of a pit, closed-loop system, below-grade tank, or proposed alternative method  
☐ Closure of a pit, closed-loop system, below-grade tank, or proposed alternative method  
☐ Modification to an existing permit  
☒ Closure plan only submitted for an existing permitted or non-permitted pit, closed-loop system, below-grade tank, or proposed alternative method

**Instructions: Please submit one application (Form C-144) per individual pit, closed-loop system, below-grade tank or alternative request**

Please be advised that approval of this request does not relieve the operator of liability should operations result in pollution of surface water, ground water or the environment. Nor does approval relieve the operator of its responsibility to comply with any other applicable governmental authority's rules, regulations or ordinances.

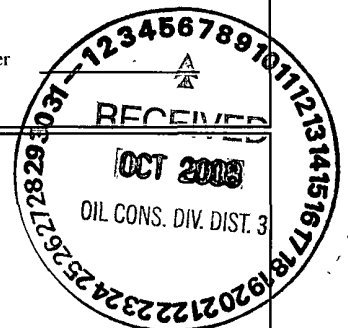
1  
Operator: Burlington Resources Oil & Gas Company, LP OGRID#: 14538  
Address: PO Box 4289, Farmington, NM 87499  
Facility or well name: Huerfanito Unit 103F  
API Number: 30-045-34413 OCD Permit Number: \_\_\_\_\_  
U/L or Qtr/Qtr: L(NWSW) Section: 3 Township: 26N Range: 9W County: San Juan  
Center of Proposed Design: Latitude: 36.51418' N Longitude: 107.78290' W NAD: ☐ 1927 ☒ 1983  
Surface Owner: ☒ Federal ☐ State ☐ Private ☐ Tribal Trust or Indian Allotment

2  
☒ **Pit:** Subsection F or G of 19.15.17.11 NMAC  
Temporary: ☒ Drilling ☐ Workover  
☐ Permanent ☐ Emergency ☐ Cavitation ☐ P&A  
☒ Lined ☐ Unlined Liner type: Thickness 20 mil ☒ LLDPE ☐ HDPE ☐ PVC ☐ Other \_\_\_\_\_  
☒ String-Reinforced  
Liner Seams: ☒ Welded ☒ Factory ☐ Other \_\_\_\_\_ Volume: 4400 bbl Dimensions L 65' x W 45' x D 10'

3  
☐ **Closed-loop System:** Subsection H of 19.15.17.11 NMAC  
Type of Operation: ☐ P&A ☐ Drilling a new well ☐ Workover or Drilling (Applies to activities which require prior approval of a permit or notice of intent)  
☐ Drying Pad ☐ Above Ground Steel Tanks ☐ Haul-off Bins ☐ Other \_\_\_\_\_  
☐ Lined ☐ Unlined Liner type: Thickness \_\_\_\_\_ mil ☐ LLDPE ☐ HDPE ☐ PVD ☐ Other \_\_\_\_\_  
Liner Seams: ☐ Welded ☐ Factory ☐ Other \_\_\_\_\_

4  
☐ **Below-grade tank:** Subsection I of 19.15.17.11 NMAC  
Volume: \_\_\_\_\_ bbl Type of fluid \_\_\_\_\_  
Tank Construction material: \_\_\_\_\_  
☐ Secondary containment with leak detection ☐ Visible sidewalls, liner, 6-inch lift and automatic overflow shut-off  
☐ Visible sidewalls and liner ☐ Visible sidewalls only ☐ Other \_\_\_\_\_  
Liner Type: Thickness \_\_\_\_\_ mil ☐ HDPE ☐ PVC ☐ Other \_\_\_\_\_

5  
☐ **Alternative Method:**  
Submittal of an exception request is required. Exceptions must be submitted to the Santa Fe Environmental Bureau office for consideration of approval.



**Fencing:** Subsection D of 19.15 17.11 NMAC (*Applies to permanent pit, temporary pits, and below-grade tanks*)

11

**Temporary Pits, Emergency Pits and Below-grade Tanks Permit Application Attachment Checklist:** Subsection B of 19.15.17.9 NMAC  
*Instructions: Each of the following items must be attached to the application. Please indicate, by a check mark in the box, that the documents are attached.*

- ☐ Hydrogeologic Report (Below-grade Tanks) - based upon the requirements of Paragraph (4) of Subsection B of 19.15.17.9 NMAC  
☒ Hydrogeologic Data (Temporary and Emergency Pits) - based upon the requirements of Paragraph (2) of Subsection B of 19.15.17.9  
☒ Siting Criteria Compliance Demonstrations - based upon the appropriate requirements of 19.15.17.10 NMAC  
☒ Design Plan - based upon the appropriate requirements of 19.15.17.11 NMAC  
☒ Operating and Maintenance Plan - based upon the appropriate requirements of 19.15.17.12 NMAC  
☒ Closure Plan (Please complete Boxes 14 through 18, if applicable) - based upon the appropriate requirements of Subsection C of 19.15.17.9 NMAC and 19.15.17.13 NMAC

☐ Previously Approved Design (attach copy of design) API \_\_\_\_\_ or Permit \_\_\_\_\_

12

**Closed-loop Systems Permit Application Attachment Checklist:** Subsection B of 19.15.17.9 NMAC

*Instructions: Each of the following items must be attached to the application. Please indicate, by a check mark in the box, that the documents are attached.*

- ☐ Geologic and Hydrogeologic Data (only for on-site closure) - based upon the requirements of Paragraph (3) of Subsection B of 19.15.17.9  
☐ Siting Criteria Compliance Demonstrations (only for on-site closure) - based upon the appropriate requirements of 19.15.17.10 NMAC  
☐ Design Plan - based upon the appropriate requirements of 19.15.17.11 NMAC  
☐ Operating and Maintenance Plan - based upon the appropriate requirements of 19.15.17.12 NMAC  
☐ Closure Plan (Please complete Boxes 14 through 18, if applicable) - based upon the appropriate requirements of Subsection C of 19.15.17.9 NMAC and 19.15.17.13 NMAC

☐ Previously Approved Design (attach copy of design) API \_\_\_\_\_

☐ Previously Approved Operating and Maintenance Plan API \_\_\_\_\_

13

**Permanent Pits Permit Application Checklist:** Subsection B of 19.15.17.9 NMAC

*Instructions: Each of the following items must be attached to the application. Please indicate, by a check mark in the box, that the documents are attached.*

- ☐ Hydrogeologic Report - based upon the requirements of Paragraph (I) of Subsection B of 19.15.17.9 NMAC  
☐ Siting Criteria Compliance Demonstrations - based upon the appropriate requirements of 19.15.17.10 NMAC  
☐ Climatological Factors Assessment  
☐ Certified Engineering Design Plans - based upon the appropriate requirements of 19.15.17.11 NMAC  
☐ Dike Protection and Structural Integrity Design: based upon the appropriate requirements of 19.15.17.11 NMAC  
☐ Leak Detection Design - based upon the appropriate requirements of 19.15.17.11 NMAC  
☐ Liner Specifications and Compatibility Assessment - based upon the appropriate requirements of 19.15.17.11 NMAC  
☐ Quality Control/Quality Assurance Construction and Installation Plan  
☐ Operating and Maintenance Plan - based upon the appropriate requirements of 19.15.17.12 NMAC  
☐ Freeboard and Overtopping Prevention Plan - based upon the appropriate requirements of 19.15.17.11 NMAC  
☐ Nuisance or Hazardous Odors, including H<sub>2</sub>S, Prevention Plan  
☐ Emergency Response Plan  
☐ Oil Field Waste Stream Characterization  
☐ Monitoring and Inspection Plan  
☐ Erosion Control Plan  
☐ Closure Plan - based upon the appropriate requirements of Subsection C of 19.15.17.9 NMAC and 19.15.17.13 NMAC

14

**Proposed Closure:** 19.15.17.13 NMAC

*Instructions: Please complete the applicable boxes, Boxes 14 through 18, in regards to the proposed closure plan.*

Type: ☒ Drilling ☐ Workover ☐ Emergency ☐ Cavitation ☐ P&A ☐ Permanent Pit ☐ Below-grade Tank ☐ Closed-loop System  
☐ Alternative

Proposed Closure Method: ☐ Waste Excavation and Removal  
☐ Waste Removal (Closed-loop systems only)  
☒ On-site Closure Method (only for temporary pits and closed-loop systems)  
☒ In-place Burial ☐ On-site Trench  
☐ Alternative Closure Method (Exceptions must be submitted to the Santa Fe Environmental Bureau for consideration)

15

**Waste Excavation and Removal Closure Plan Checklist:** (19.15.17.13 NMAC) *Instructions: Each of the following items must be attached to the closure plan. Please indicate, by a check mark in the box, that the documents are attached.*

- ☐ Protocols and Procedures - based upon the appropriate requirements of 19.15.17.13 NMAC  
☐ Confirmation Sampling Plan (if applicable) - based upon the appropriate requirements of Subsection F of 19.15.17.13 NMAC  
☐ Disposal Facility Name and Permit Number (for liquids, drilling fluids and drill cuttings)  
☐ Soil Backfill and Cover Design Specifications - based upon the appropriate requirements of Subsection H of 19.15.17.13 NMAC  
☐ Re-vegetation Plan - based upon the appropriate requirements of Subsection I of 19.15.17.13 NMAC  
☐ Site Reclamation Plan - based upon the appropriate requirements of Subsection G of 19.15.17.13 NMAC

**Waste Removal Closure For Closed-loop Systems That Utilize Above Ground Steel Tanks or Haul-off Bins Only:** (19.15.17.13.D NMAC)

*Instructions: Please identify the facility or facilities for the disposal of liquids, drilling fluids and drill cuttings. Use attachment if more than two facilities are required.*

Disposal Facility Name: \_\_\_\_\_ Disposal Facility Permit #: \_\_\_\_\_

Disposal Facility Name: \_\_\_\_\_ Disposal Facility Permit #: \_\_\_\_\_

Will any of the proposed closed-loop system operations and associated activities occur on or in areas that *will not* be used for future service and operations?

☐ Yes (If yes, please provide the information) ☐ No

*Required for impacted areas which will not be used for future service and operations*

☐ Soil Backfill and Cover Design Specification - based upon the appropriate requirements of Subsection H of 19.15.17.13 NMAC

☐ Re-vegetation Plan - based upon the appropriate requirements of Subsection I of 19.15.17.13 NMAC

☐ Site Reclamation Plan - based upon the appropriate requirements of Subsection G of 19.15.17.13 NMAC

**Siting Criteria (Regarding on-site closure methods only:** 19.15.17.10 NMAC

*Instructions: Each siting criteria requires a demonstration of compliance in the closure plan. Recommendations of acceptable source material are provided below. Requests regarding changes to certain siting criteria may require administrative approval from the appropriate district office or may be considered an exception which must be submitted to the Santa Fe Environmental Bureau office for consideration of approval. Justifications and/or demonstrations of equivalency are required. Please refer to 19.15.17.10 NMAC for guidance.*

Ground water is less than 50 feet below the bottom of the buried waste

- NM Office of the State Engineer - iWATERS database search; USGS. Data obtained from nearby wells

☐ Yes ☒ No

☐ N/A

Ground water is between 50 and 100 feet below the bottom of the buried waste

- NM Office of the State Engineer - iWATERS database search; USGS; Data obtained from nearby wells

☐ Yes ☒ No

☐ N/A

Ground water is more than 100 feet below the bottom of the buried waste.

- NM Office of the State Engineer - iWATERS database search; USGS; Data obtained from nearby wells

☒ Yes ☐ No

☐ N/A

Within 300 feet of a continuously flowing watercourse, or 200 feet of any other significant watercourse or lakebed, sinkhole, or playa lake (measured from the ordinary high-water mark).

- Topographic map; Visual inspection (certification) of the proposed site

☐ Yes ☒ No

Within 300 feet from a permanent residence, school, hospital, institution, or church in existence at the time of initial application.

- Visual inspection (certification) of the proposed site; Aerial photo; satellite image

☐ Yes ☒ No

☐ Yes

☐ Yes ☒ No

Within 500 horizontal feet of a private, domestic fresh water well or spring that less than five households use for domestic or stock watering purposes, or within 1000 horizontal feet of any other fresh water well or spring, in existence at the time of the initial application.

- NM Office of the State Engineer - iWATERS database; Visual inspection (certification) of the proposed site

☐ Yes ☒ No

Within incorporated municipal boundaries or within a defined municipal fresh water well field covered under a municipal ordinance adopted pursuant to NMSA 1978, Section 3-27-3, as amended.

- Written confirmation or verification from the municipality; Written approval obtained from the municipality

☐ Yes ☒ No

Within 500 feet of a wetland.

- US Fish and Wildlife Wetland Identification map; Topographic map; Visual inspection (certification) of the proposed site

☐ Yes ☒ No

Within the area overlying a subsurface mine.

- Written confirmation or verification or map from the NM EMNRD-Mining and Mineral Division

☐ Yes ☒ No

Within an unstable area

- Engineering measures incorporated into the design; NM Bureau of Geology & Mineral Resources; USGS; NM Geological Society, Topographic map

☐ Yes ☒ No

Within a 100-year floodplain.

- FEMA map

☐ Yes ☒ No

**On-Site Closure Plan Checklist:** (19.15.17.13 NMAC) *Instructions: Each of the following items must be attached to the closure plan. Please indicate, by a check mark in the box, that the documents are attached.*

☒ Siting Criteria Compliance Demonstrations - based upon the appropriate requirements of 19.15.17.10 NMAC

☒ Proof of Surface Owner Notice - based upon the appropriate requirements of Subsection F of 19.15.17.13 NMAC

☐ Construction/Design Plan of Burial Trench (if applicable) based upon the appropriate requirements of 19.15.17.11 NMAC

☐ Construction/Design Plan of Temporary Pit (for in place burial of a drying pad) - based upon the appropriate requirements of 19.15.17.11 NMAC

☒ Protocols and Procedures - based upon the appropriate requirements of 19.15.17.13 NMAC

☐ Confirmation Sampling Plan (if applicable) - based upon the appropriate requirements of Subsection F of 19.15.17.13 NMAC

☒ Waste Material Sampling Plan - based upon the appropriate requirements of Subsection F of 19.15.17.13 NMAC

☒ Disposal Facility Name and Permit Number (for liquids, drilling fluids and drill cuttings or in case on-site closure standards cannot be achieved)

☒ Soil Cover Design - based upon the appropriate requirements of Subsection H of 19.15.17.13 NMAC

☒ Re-vegetation Plan - based upon the appropriate requirements of Subsection I of 19.15.17.13 NMAC

☒ Site Reclamation Plan - based upon the appropriate requirements of Subsection G of 19.15.17.13 NMAC

19

**Operator Application Certification:**

I hereby certify that the information submitted with this application is true, accurate and complete to the best of my knowledge and belief.

Name (Print): Crystal Tafoya Title: Regulatory Technician  
 Signature: *Crystal Tafoya* Date: 10/3/08  
 e-mail address: crystal.tafoya@conocophillips.com Telephone: 505-326-9837

20

**OCD Approval:** ☐ Permit Application (including closure plan) ☒ Closure Plan (only) ☐ OCD Conditions (see attachment)

OCD Representative Signature: *Brandon Powell* Approval Date: 11-4-08

Title: *Enviro Spec* OCD Permit Number: \_\_\_\_\_

21

**Closure Report (required within 60 days of closure completion):** Subsection K of 19 15 17 13 NMAC

Instructions: Operators are required to obtain an approved closure plan prior to implementing any closure activities and submitting the closure report. The closure report is required to be submitted to the division within 60 days of the completion of the closure activities. Please do not complete this section of the form until an approved closure plan has been obtained and the closure activities have been completed.

☐ Closure Completion Date: \_\_\_\_\_

22

**Closure Method:**

☐ Waste Excavation and Removal ☐ On-site Closure Method ☐ Alternative Closure Method ☐ Waste Removal (Closed-loop systems only)  
☐ If different from approved plan, please explain.

23

**Closure Report Regarding Waste Removal Closure For Closed-loop Systems That Utilize Above Ground Steel Tanks or Haul-off Bins Only:**

Instructions: Please identify the facility or facilities for where the liquids, drilling fluids and drill cuttings were disposed. Use attachment if more than two facilities were utilized.

Disposal Facility Name: \_\_\_\_\_ Disposal Facility Permit Number: \_\_\_\_\_

Disposal Facility Name: \_\_\_\_\_ Disposal Facility Permit Number: \_\_\_\_\_

Were the closed-loop system operations and associated activities performed on or in areas that will not be used for future service and operations?

☐ Yes (If yes, please demonstrate compliance to the items below) ☐ No

Required for impacted areas which will not be used for future service and operations:

☐ Site Reclamation (Photo Documentation)  
☐ Soil Backfilling and Cover Installation  
☐ Re-vegetation Application Rates and Seeding Technique

24

**Closure Report Attachment Checklist:** Instructions: Each of the following items must be attached to the closure report. Please indicate, by a check mark in the box, that the documents are attached.

- ☐ Proof of Closure Notice (surface owner and division)
- ☐ Proof of Deed Notice (required for on-site closure)
- ☐ Plot Plan (for on-site closures and temporary pits)
- ☐ Confirmation Sampling Analytical Results (if applicable)
- ☐ Waste Material Sampling Analytical Results (if applicable)
- ☐ Disposal Facility Name and Permit Number
- ☐ Soil Backfilling and Cover Installation
- ☐ Re-vegetation Application Rates and Seeding Technique
- ☐ Site Reclamation (Photo Documentation)

On-site Closure Location: Latitude: \_\_\_\_\_ Longitude: \_\_\_\_\_ NAD ☐ 1927 ☐ 1983

25

**Operator Closure Certification:**

I hereby certify that the information and attachments submitted with this closure report is true, accurate and complete to the best of my knowledge and belief. I also certify that the closure complies with all applicable closure requirements and conditions specified in the approved closure plan.

Name (Print): \_\_\_\_\_ Title: \_\_\_\_\_

Signature: \_\_\_\_\_ Date: \_\_\_\_\_

e-mail address: \_\_\_\_\_ Telephone: \_\_\_\_\_

**New Mexico Office of the State Engineer  
POD Reports and Downloads**

Township: 26N Range: 09W Sections:

NAD27 X: Y: Zone: ☐ Search Radius:

County: ☐ Basin: ☐ Number: Suffix:

Owner Name: (First) (Last) ☐ Non-Domestic ☐ Domestic  
☒ All

POD / Surface Data Report

Avg Depth to Water Report

Water Column Report

Clear Form

iWATERS Menu

Help

**WATER COLUMN REPORT 10/01/2008**

(quarters are 1=NW 2=NE 3=SW 4=SE)  
(quarters are biggest to smallest)

POD Number	Tw	Rng	Sec	q	q	q	Zone	X	Y	Depth Well	Depth Water	Water Column
SJ 02961	26N	09W	01	2	2	3				1500		
SJ 02962	26N	09W	01	3	2	3				1500		
SJ 01756	26N	09W	11	2	2	3				75	40	3
SJ 03811 POD1	26N	09W	12	3	3	3				348	175	17
SJ 00412	26N	09W	16	4	2					202	65	13
SJ 00214	26N	09W	26	2	4	2				946	230	71
SJ 00064	26N	09W	26	4	2	1				490	215	27
SJ 00063	26N	09W	26	4	2	3				479	234	24

Record Count: 8

**New Mexico Office of the State Engineer**  
**POD Reports and Downloads**

Township: 27N Range: 09W Sections:

NAD27 X: Y: Zone: ☐ Search Radius:

County: ☐ Basin: ☐ Number: Suffix:

Owner Name: (First) (Last) ☐ Non-Domestic ☐ Domestic  
☒ All

POD / Surface Data Report

Avg Depth to Water Report

Water Column Report

Clear Form

iWATERS Menu

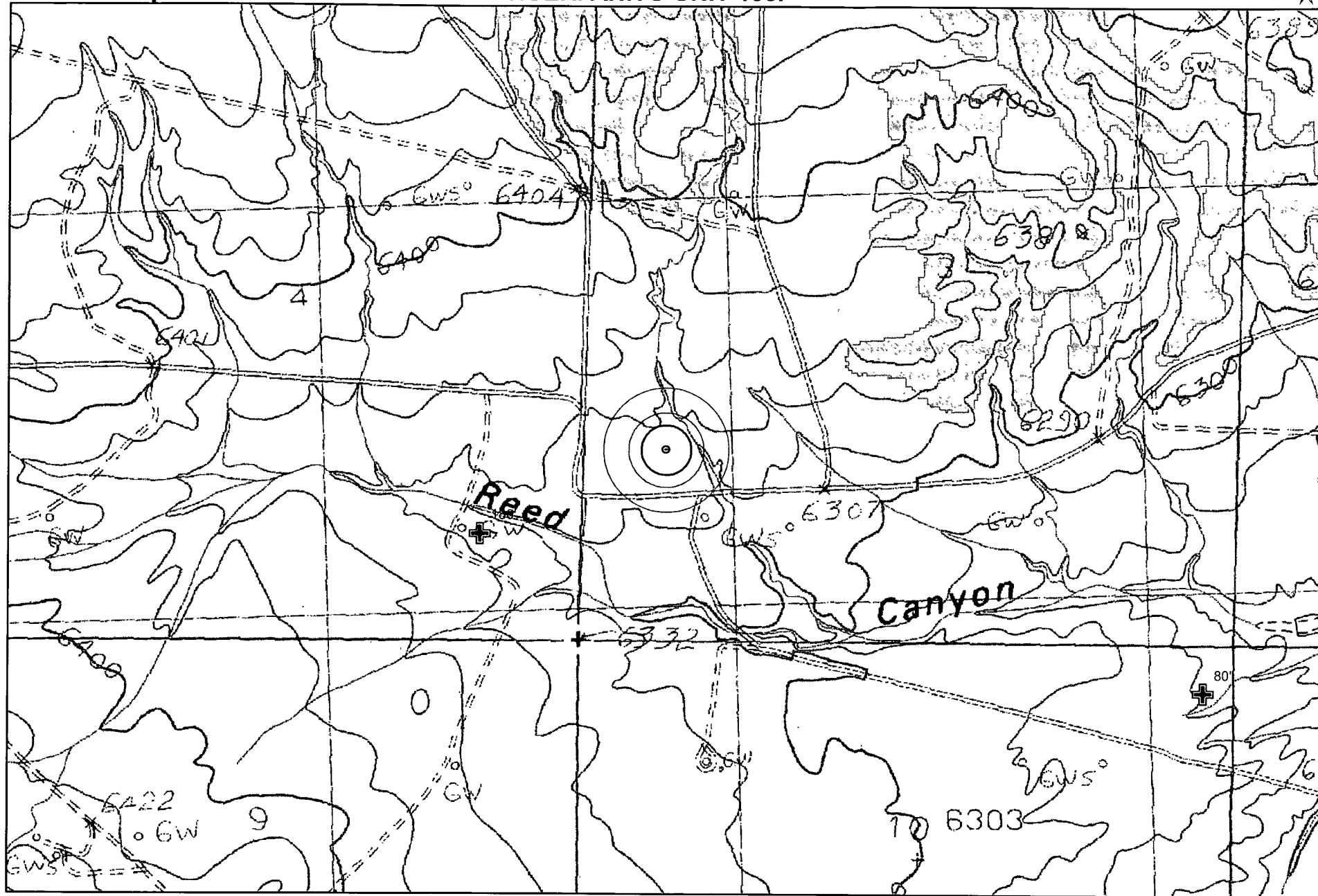
Help

**WATER COLUMN REPORT 10/01/2008**

(quarters are 1=NW 2=NE 3=SW 4=SE)  
(quarters are biggest to smallest)

POD Number	Tws	Rng	Sec	q	q	q	Zone	X	Y	Depth Well	Depth Water	Wate Colun
------------	-----	-----	-----	---	---	---	------	---	---	---------------	----------------	---------------

No Records found, try again



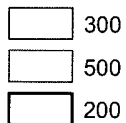
Data Source  
Aerial flown locally Sedgewick in 2005.  
Wetlands Data Aquired from U.S. Fish  
and Wildlife [Http://wetlandswms.er.usgs.gov](http://wetlandswms.er.usgs.gov)  
USGS Topo



COPCathodic



iWaters

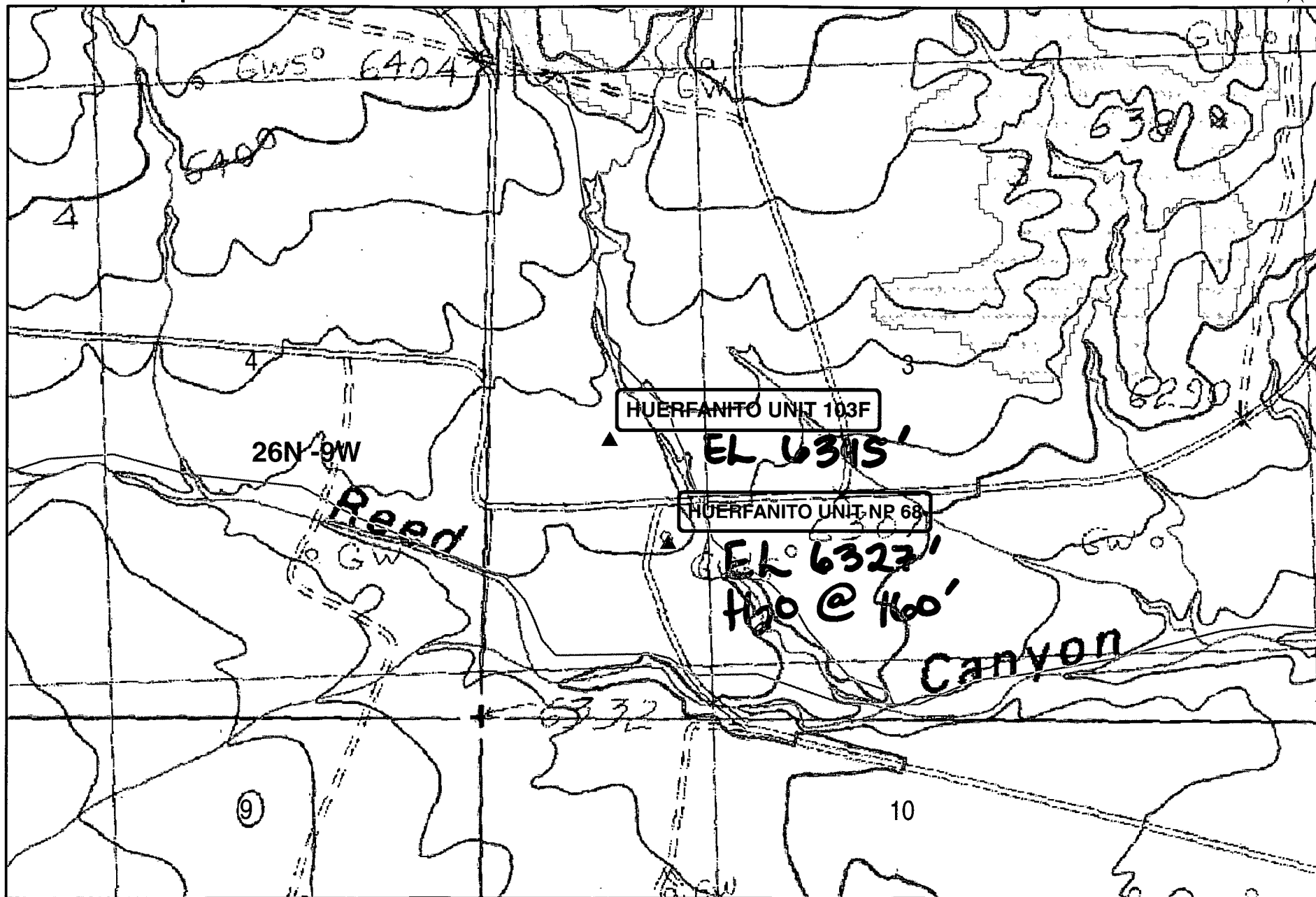


Wetlands  
City Limits

1:12,000

NAD\_1983\_SP\_  
NM West\_FIPS\_  
3003  
Sep 22, 2008





Wetlands data aquired from U.S. Fish  
and Wildlife  
<http://wetlandswms.er.usgs.gov>

**Ground Water**

- ⊕ iWaters
- + COP

**Buffers**

- 200ft
- 300ft
- 500ft
- Wetlands

0 500 1,000  
Feet  
1:8,260

NAD\_1983\_StatePlane\_  
NMWest\_FIPS\_3003

8/08

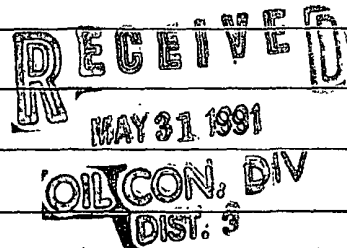
614

68 - 30-045 - 00008  
103 - 30-045 - 011704

E

DATA SHEET FOR DEEP GROUND BED CATHODIC PROTECTION WELLS  
NORTHWESTERN NEW MEXICO  
(Submit 3 copies to OCD Aztec Office)Operator MERIDIAN OIL Location: Unit SW Sec. 3 Twp 26 Rng 9Name of Well/Wells or Pipeline Serviced HUERFANITO UNIT #103, #68

cps 1013w

Elevation 6327' Completion Date 8/15/75 Total Depth 375' Land Type\* N/ACasing, Sizes, Types & Depths N/AIf Casing is cemented, show amounts & types used N/AIf Cement or Bentonite Plugs have been placed, show depths & amounts used  
N/ADepths & thickness of water zones with description of water when possible:  
Fresh, Clear, Salty, Sulphur, Etc. 160'Depths gas encountered: N/AType & amount of coke breeze used: 34 SACKSDepths anodes placed: 320', 310', 300', 290', 255', 235', 225', 215', 205', 175'Depths vent pipes placed: N/AVent pipe perforations: 200'Remarks: gb #1

If any of the above data is unavailable, please indicate so. Copies of all logs, including Drillers Log, Water Analyses &amp; Well Bore Schematics should be submitted when available. Unplugged abandoned wells are to be included.

\*Land Type may be shown: F-Federal; I-Indian; S-State; P-Fee.  
If Federal or Indian, add Lease Number.

WELL CASING  
CATHODIC PROTECTION CONSTRUCTION REPORT  
DAILY LOG

*Log*  
Completion Date **8/15/75**

Drilling Log (Attach Hereto). ☐

Well Name <b>Huerfano UNIT #103</b>		Location <b>SW-3-26-9</b>		CPS No. <b>1013 W</b>	
Type & Size Bit Used <b>6 3/4"</b>				Work Order No. <b>54447.19-50-20</b> <b>90276.19-50-20</b>	
Anode Hole Depth <b>375</b>	Total Drilling Rig Time	Total Lbs. Coke Used <b>34 SACKS</b>	Lost Circulation Mat'l Used	No. Sacks Mud Used	
Anode Depth					
#1 <b>320'</b>	#2 <b>310'</b>	#3 <b>300'</b>	#4 <b>290'</b>	#5 <b>255'</b>	#6 <b>235'</b>
#7 <b>225'</b>	#8 <b>215'</b>	#9 <b>205'</b>	#10 <b>175'</b>		
Anode Output (Amps)					
#1 <b>4.3</b>	#2 <b>5.3</b>	#3 <b>5.1</b>	#4 <b>3.7</b>	#5 <b>4.0</b>	#6 <b>4.7</b>
#7 <b>4.6</b>	#8 <b>3.8</b>	#9 <b>4.0</b>	#10 <b>4.1</b>		
Anode Depth					
#11	#12	#13	#14	#15	#16
Anode Output (Amps)					
#11	#12	#13	#14	#15	#16
Total Circuit Resistance					
Volts <b>12</b>	Amps <b>18</b>	Ohms <b>.67</b>	No. 8-C.P. Cable Used <b>2830'</b>		No. 2-C.P. Cable Used

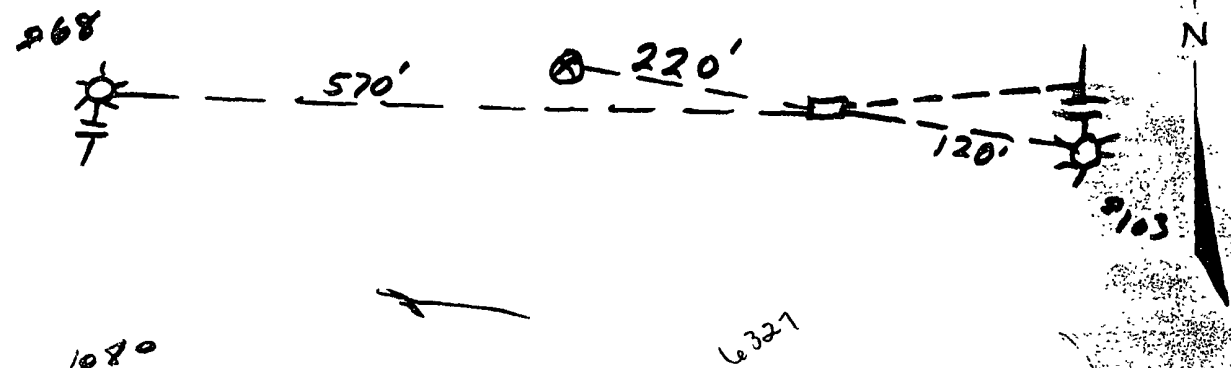
Remarks: **DRILLER SAID WATER AT 160'. LOG STOPPED AT 360'**  
**DRILLED 160' WITH AIR, THEN INFLOODED WATER.**  
**VENT PIPE ON #1 ANODE, PERFORATED 200'.**

*Driller* 1123.20  
*mate* 449.28  
*Surp* 213.20  
*Wave* 263.19  
*Coke* 204.00  
*Anodes* 264.60  
*Vent* 23.00  
*J Box* 86.00  
*Rect* 333.50  
*misc* 50.00  
**3010.17**

All Construction Completed

*JC Stotts*  
(Signature)

GROUND BED LAYOUT SKETCH



NEW MEXICO OIL CONSERVATION COMMISSION  
Santa Fe, New Mexico

(Form C-104)  
Revised 7/1/57

REQUEST FOR (OIL) - (GAS) ALLOWABLE

New Well  
Recompletion

This form shall be submitted by the operator before an initial allowable will be assigned to any completed Oil or Gas well. Form C-104 is to be submitted in QUADRUPLICATE to the same District Office to which Form C-101 was sent. The allowable will be assigned effective 7:00 A.M. on date of completion or recompletion, provided this form is filed during calendar month of completion or recompletion. The completion date shall be that date in the case of an oil well when new oil is delivered into the stock tanks. Gas must be reported on 15.025 psia at 60° Fahrenheit.

Farmington, New Mexico

January 15, 1958

(Place)

(Date)

WE ARE HEREBY REQUESTING AN ALLOWABLE FOR A WELL KNOWN AS:

El Paso Natural Gas Company  
(Company or Operator)

Huerfano Unit, Well No. 1-3, in SW 1/4 SW 1/4,  
(Lease)

M  
Unit Letter

Sec. 3

T. 26N

R. 9W

NMPM,

Ballard P. C.

Pool

San Juan

County. Date Spudded 11-23-54

Date Drilling Completed

12-23-54

Please indicate location:

Elevation 6330

Total Depth 2155'

PBTD

Top Oil/Gas Pay 2072

Name of Prod. Form. Pictured Cliffs

PRODUCING INTERVAL -

Perforations

Open Hole 83'

Depth

Casing Shoe 2072

Depth

Tubing 2121

OIL WELL TEST -

Natural Prod. Test: \_\_\_\_\_ bbls. oil, \_\_\_\_\_ bbls. water in \_\_\_\_\_ hrs, \_\_\_\_\_ min. Choke Size \_\_\_\_\_

Test After Acid or Fracture Treatment (after recovery of volume of oil equal to volume of load oil used): \_\_\_\_\_ bbls. oil, \_\_\_\_\_ bbls. water in \_\_\_\_\_ hrs, \_\_\_\_\_ min. Choke Size \_\_\_\_\_

GAS WELL TEST -

Natural Prod. Test: \_\_\_\_\_ MCF/Day; Hours flowed \_\_\_\_\_ Choke Size \_\_\_\_\_

Method of Testing (pitot, back pressure, etc.): \_\_\_\_\_

Test After Acid or Fracture Treatment: 1505 MCF/Day; Hours flowed 3

Choke Size \_\_\_\_\_ Method of Testing: \_\_\_\_\_

Acid or Fracture Treatment (Give amounts of materials used, such as acid, water, oil, and sand): 195 qts. HCl; 5000 gal. oil and 8000# sand.

Casing \_\_\_\_\_ Tubing \_\_\_\_\_ Date first new  
Press. \_\_\_\_\_ Press. \_\_\_\_\_ oil run to tanks

Oil Transporter El Paso Natural Gas Products Company

Gas Transporter El Paso Natural Gas Company

Remarks: This well was originally drilled by J. Glenn Turner as the Crandall Federal #1-3. El Paso Natural Gas has purchased this well with name changed to the El Paso Natural Gas Crandall Federal #1-3. El Paso Natural Gas Co. is the operator

I hereby certify that the information given above is true and complete to the best of my knowledge.

Approved \_\_\_\_\_ JAN 21 1958 \_\_\_\_\_, 19 \_\_\_\_\_

El Paso Natural Gas Company  
(Company or Operator)

Original Signed F. H. WOOD

(Signature)

OIL CONSERVATION COMMISSION  
Original Signed By

A. R. KENDRICK

By: \_\_\_\_\_

Title PETROLEUM ENGINEER DIST. NO. 3

By: \_\_\_\_\_ Title: Petroleum Engineer

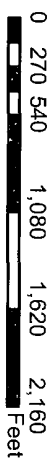
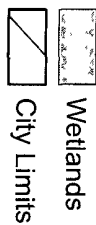
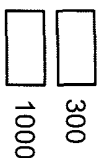
Send Communications regarding well to:

Name E. S. Oberly

Address Box 977, Farmington, New Mexico



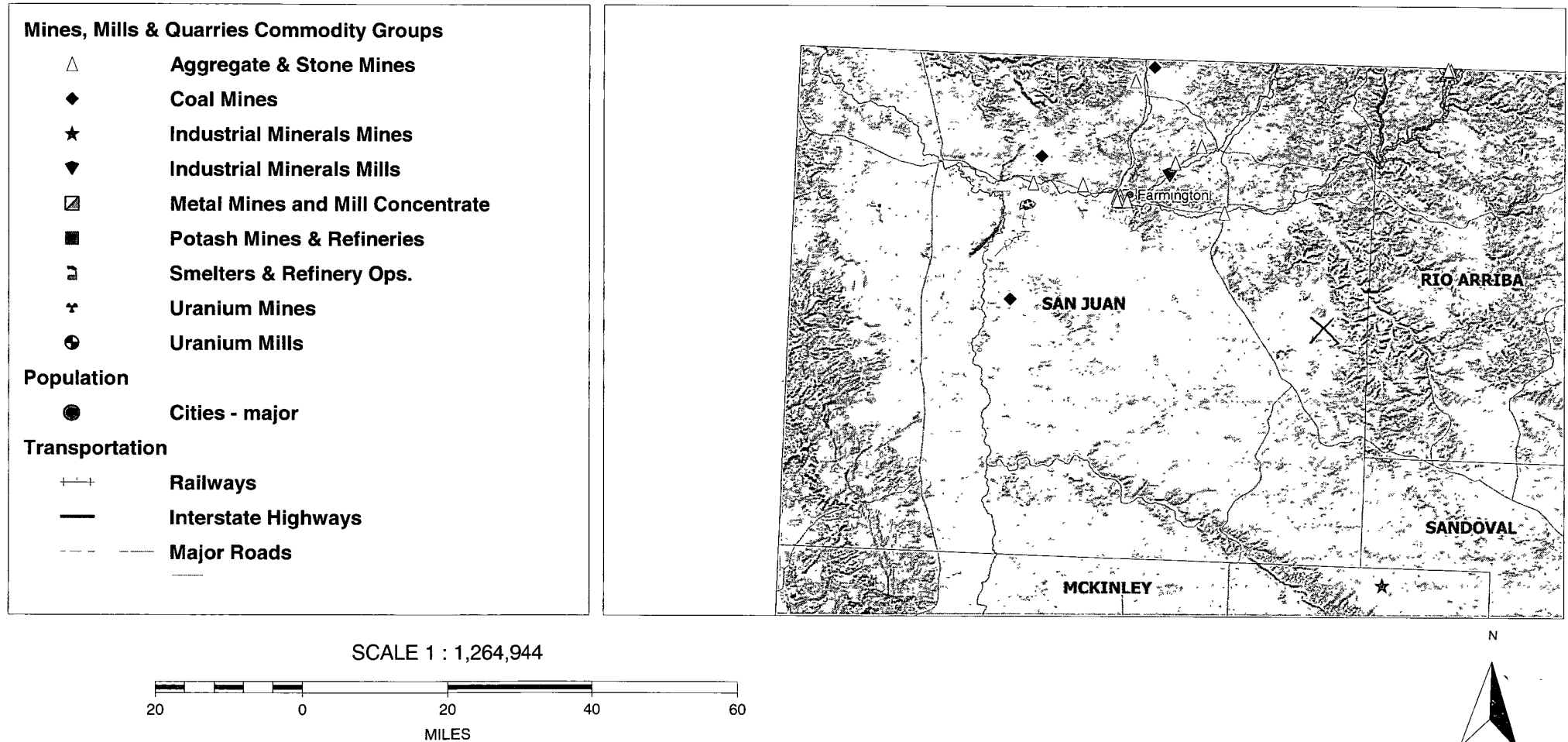
Data Source  
Aerial flown locally Sedgewick in 2005.  
Wetlands Data Aquired from U.S. Fish  
and Wildlife Htp://wetlandswms.er.usgs.gov  
USGS Topo



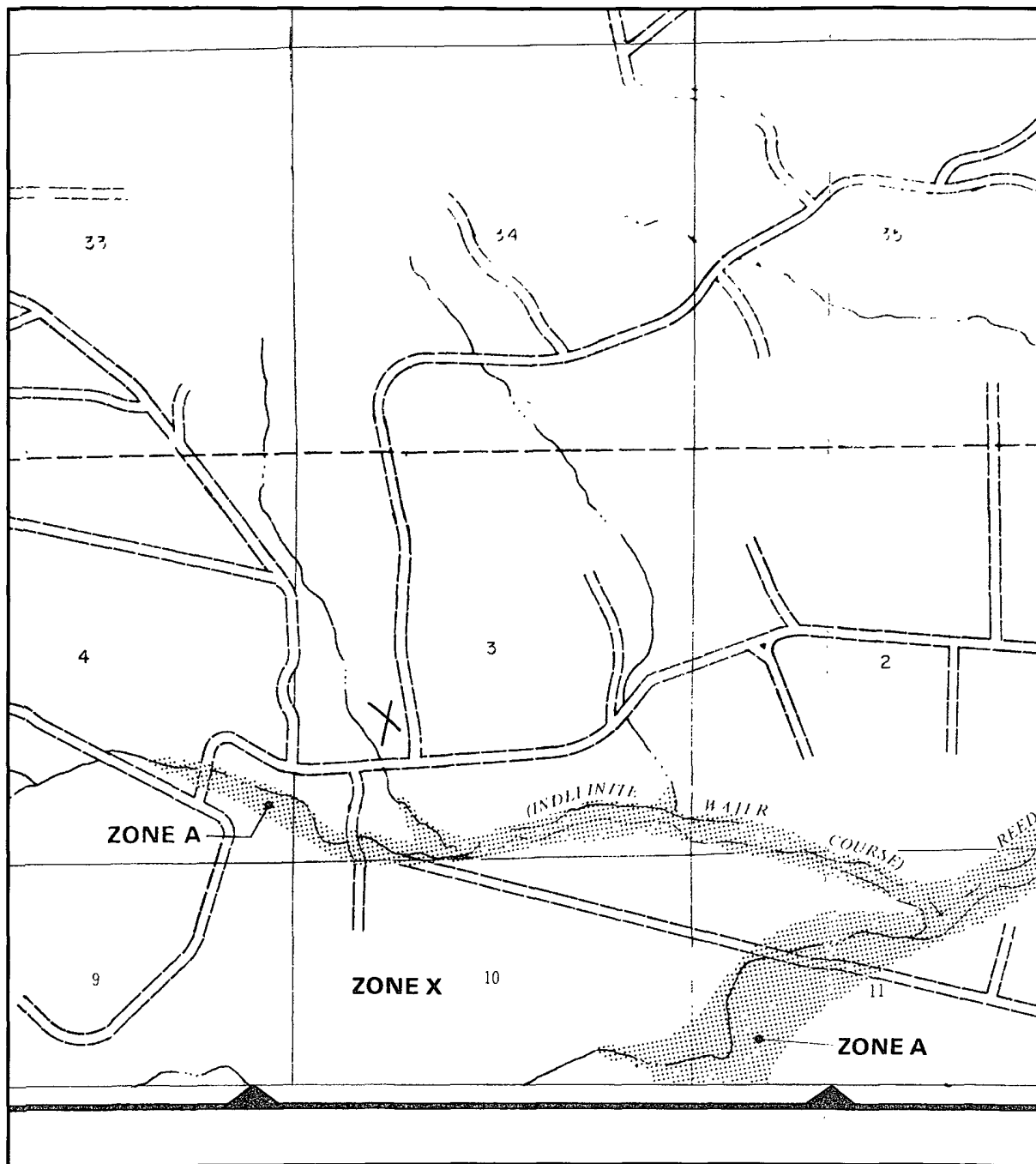
1:12,000

NAD\_1983\_SP\_3003  
NM West\_FIPS\_3003  
Sep 23, 2008

# Huerfanito Unit 103F Mines, Mills and Quarries Web Map







638-6620.



APPROXIMATE SCALE

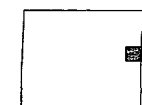
2000 0

NATIONAL FLOOD INSURANCE PROGRAM

**FIRM**  
FLOOD INSURANCE RATE MAP

SAN JUAN COUNTY,  
NEW MEXICO  
UNINCORPORATED AREAS

PANEL 750 OF 1450  
(SEE MAP INDEX FOR PANELS NOT PRINTED)



PANEL LOCATION

COMMUNITY-PANEL NUMBER  
350064 0750 B

EFFECTIVE DATE:  
AUGUST 4, 1988



Federal Emergency Management Agency

This is an official copy of a portion of the above referenced flood map. It was extracted using F-MIT On-Line. This map does not reflect changes or amendments which may have been made subsequent to the date on the title block. For the latest product information about National Flood Insurance Program flood maps check the FEMA Flood Map Store at [www.msc.fema.gov](http://www.msc.fema.gov)

## ***Hydrogeological Report for Huerfanito Unit 103F***

### **Regional Geological context:**

The Nacimiento Formation is of Paleocene age (Baltz, 1967, p. 35). It crops out in a broad band inside the southern and western margins of the central basin and in a narrow band along the west face of the Nacimiento Uplift. The Nacimiento is a nonresistant unit and typically erodes to low, rounded hills or forms badland topography.

The Nacimiento Formation occurs in approximately only the southern two-thirds of the San Juan Basin where it conformably overlies and intertongues with the Ojo Alamo Sandstone (Fassett, 1974, p. 229). The Nacimiento Formation grades laterally into the main part of the Animas Formation (Fassett and Hinds, 1971, p. 34); thus, in this area, the two formations occupy the same stratigraphic interval.

Strata of the Nacimiento Formation were deposited in lakebeds in the central basin area with lesser deposition in stream channels (Brimhall, 1973, p. 201). In general, the Nacimiento consists of drab, interbedded black and gray shale with discontinuous, white, medium- to very coarse grained arkosic sandstone (Stone et al., 1983, p.30). Stone et al. indicated that the formation may contain more sandstone than commonly reported because some investigators assume the slope-forming strata in the unit area shales, whereas in many places the strata actually are poorly consolidated sandstones. Total thickness of the Nacimiento Formation ranges from about 500 to 1,300 feet. The unit generally thickens from the basin margins toward the basin center (Steven et al., 1974). The sandstone deposits within the Nacimiento Formation are much thinner than the total thickness of the formation because their environment of deposition was localized stream channels (Brimhall, 1973, p. 201). The thickness of the combined San Jose, Animas, and Nacimiento Formations ranges from 500 to more than 3,500 feet.

### **Hydraulic Properties:**

**Reported well yields for** 53 wells completed in either the Animas or Nacimiento Formations range from 2 to 90 gallons per minute and the median yield is 7.5 gallons per minute. The primary use of water from Nacimiento and Animas Formations is domestic and livestock supplies. There are no known aquifer tests for the Animas or Nacimiento Formations, but specific capacities reported for six wells range from 0.24 to 2.30 gallons per minute per foot of drawdown (Levings et al., 1990).

The Animas and Nacimiento Formations are in many ways hydrologically similar to the San Jose Formation because sands in both units produce approximately the same quantities of water. However, the greater percentage of fine materials in the Animas and Nacimiento Formations may restrict downward vertical leakage to the Ojo Alamo Sandstone or Kirtland Shale. The poorly cemented fine material is highly erodible, forms a badland terrain, and supports only spotty vegetation. These conditions are more conducive to runoff than retention of precipitation.

### **References:**

Baltz, E.H., 1967, Stratigraphy and regional tectonic implications of part of Upper Cretaceous rocks, east-central San Juan Basin, New Mexico: USGS Professional Paper



552, 101 p.

Brimhall, R.M., 1973, Ground-water hydrology of Tertiary rocks of the San Juan Basin, New Mexico, in Fassett, J.E., ed., Cretaceous and Tertiary rocks of the Southern Colorado Plateau: Four Corners Geological Society Memoir, p. 197-207.

Fassett, J.E., 1974, Cretaceous and Tertiary rocks of the eastern San Juan Basin, New Mexico and Colorado, in Guidebook of Ghost Ranch, central-northern New Mexico: New Mexico Geological Society, 25th Field Conference, p. 225-230.

Fassett, J.E., and Hinds, J.S., 1971, Geology and fuel resources of the Fruitland Formation and Kirtland Shale of the San Juan Basin, New Mexico and Colorado: USGS Professional Paper 676, 76 p.

Levings, G.W., Craig, S.d., Dam, W.L., Kernodle, J.M., and Thorn, C.R., 1990, Hydrogeology of the San Jose, Nacimiento, and Animas Formations in the San Juan structural basin, New Mexico, Colorado, Arizona, and Utah: USGS Hydrologic Investigations Atlas HA-720-A, 2 sheets.

Stone, W.J., Lyford, F.P., Frenzel, P.F., Mizell, N.H., and Padgett, E.T., 1983, Hydrogeology and water resources of San Juan Basin, New Mexico: New Mexico Bureau of Mines and Mineral Resources, Hydrologic Report 6.

### **Siting Criteria Compliance Demonstration & Hydro Geologic Analysis**

The Huerfanito Unit 103F is not located in an unstable area. The location is not over a mine and is not on the side of a hill as indicated on the Mines, Mills and Quarries Map and Topographic Map. The location of the excavated pit material will not be located within 300' of any continuously flowing watercourse or 200' from any other watercourse as indicated on the Topographic Map. The location is not within a 100-year floodplain area as indicated on the FEMA Map. The groundwater depth is considered to be greater than 100' as determined by the topographic map and the Cathodic well data from the Huerfanito Unit NP 68 with an elevation of 6327' and groundwater depth of 160'. The subject well has an elevation of 6345' which is slightly greater than the Huerfanito Unit NP 68, therefore the groundwater depth is greater than 100'. There are no iWATERS data points located in the area as indicated on the TOPO Map. The Cathodic data provided the indication of groundwater depth is greater than 100'. The hydro geologic analysis indicates the groundwater depth and the Nacimiento formation will create a stable area for this new location.

## Tafoya, Crystal

---

**From:** Tafoya, Crystal  
**Sent:** Thursday, July 10, 2008 8:16 AM  
**To:** 'mark\_kelly@nm.blm.gov'  
**Subject:** OCD Pit Closure Notification

The following temporary pits will be closed on-site. The new OCD Pit Rule 17 requires the surface owner be notified. Please feel free to contact me at any time if you have any questions. Thank you!

Allison Unit 2B  
Allison Unit 40N  
Angel Peak B 27E  
Ballard 11F  
Cain 725S  
Canyon Largo Unit 250N  
Canyon Largo Unit 279E  
Canyon Largo Unit 288E  
Canyon largo Unit 297E  
Canyon Largo Unit 465E  
Carson SRC 4E  
Day B 4P  
Day B 5A  
East 17S  
EPNG A 1B  
EPNG B 1M  
Federal A 1E  
Filan 5M  
Filan 5N  
Fogelson 4 100  
Fogelson 4 100S  
Grambling C 202S  
Hagood 19  
Hamner 9S  
Hardie 4P  
Hare 295  
Heaton Com 100  
Helms Federal 1G  
Howell 12  
~~Huerfanito Unit 103E~~  
Huerfanito Unit 29S  
Huerfanito Unit 39S  
Huerfanito Unit 47S  
Huerfanito Unit 50E  
Huerfanito Unit 75E  
Huerfanito Unit 83E  
Huerfanito Unit 87E  
Huerfanito Unit 90E  
Huerfanito Unit 90M  
Huerfanito Unit 98S  
Huerfano Unit 108F  
Huerfano Unit 282E  
Huerfano unit 305  
Huerfano unit 307  
Huerfano Unit 554  
Johnston Federal 24S

District I  
1625 N. French Dr., Hobbs, NM 88240

District II  
1301 W. Grand Avenue, Artesia, NM 88210

District III  
1000 Rio Brazos Rd., Aztec, NM 87410

District IV  
1220 S. St. Francis Dr., Santa Fe, NM 87505

State of New Mexico  
Energy, Minerals & Natural Resources Department

OIL CONSERVATION DIVISION  
1220 South St. Francis Dr.  
Santa Fe, NM 87505

Form C-102  
Revised October 12, 2005  
Instructions on back  
Appropriate District Office  
State Lease - 4 Copies  
Fee Lease - 3 Copies

RECEIVED

AUG 29 2007

AMENDED REPORT  
Bureau of Land Management  
Farmington Field Office

WELL LOCATION AND ACREAGE DEDICATION PLAT

*API Number 30-045-		*Pool Code 71599	*Pool Name BASIN DAKOTA
*Property Code 7138	*Property Name HUERFANITO UNIT		*Well Number 103F
*GRID No. 14538	*Operator Name BURLINGTON RESOURCES OIL & GAS COMPANY, LP		*Elevation 6345'

10 Surface Location


UL or lot no. L	Section 3	Township 26N	Range 9W	Lot Idn.	Feet from the 1530	North/South line SOUTH	Feet from the 665	East/West line WEST	County SAN JUAN
--------------------	--------------	-----------------	-------------	----------	-----------------------	---------------------------	----------------------	------------------------	--------------------

11 Bottom Hole Location If Different From Surface

UL or lot no. L	Section	Township	Range	Lot Idn.	Feet from the	North/South line	Feet from the	East/West line	County
--------------------	---------	----------	-------	----------	---------------	------------------	---------------	----------------	--------

*Dedicated Acres 320.89 Acres - W/2	*Joint or Infill	*Consolidation Code	*Order No.
--	------------------	---------------------	------------

NO ALLOWABLE WILL BE ASSIGNED TO THIS COMPLETION UNTIL ALL INTERESTS HAVE BEEN CONSOLIDATED  
OR A NON-STANDARD UNIT HAS BEEN APPROVED BY THE DIVISION

15 2638.68'		2548.26'	
1336.50'	LOT 4	LOT 3	LOT 2
1320.65'	LEASE USA SF-078135		LOT 1
1320.33'	1110'	1331.88'	
1320.33'	665'	1320.00'	
1320.33'	1945'	2640.00'	
5198.16'			
LAT: 36°30.8502' N LONG: 107°45.9370' W DATUM: NAD27		LAT: 36°51418' N LONG: 107°78290' W DATUM: NAD83	
3			
17 OPERATOR CERTIFICATION I hereby certify that the information contained herein is true and complete to the best of my knowledge and belief, and that this organization either owns a working interest or unleased mineral interest in the land including the proposed bottom-hole location or has a right to drill this well at this location pursuant to a contract with an owner of such a mineral or working interest, or to a voluntary pooling agreement or a compulsory pooling order heretofore entered by the division. Signature: <u>Kandis Roland</u> Date: <u>7/10/07</u> Printed Name: <u>Kandis Roland</u>			
18 SURVEYOR CERTIFICATION I hereby certify that the well location shown on this plat was plotted from field notes of actual surveys made by me or under my supervision, and that the same is true and correct to the best of my belief. Date of Survey: <u>JUNE 13, 2007</u> Signature and Seal of Professional Surveyor  <u>JASON C. EDWARDS</u> Certificate Number: <u>15269</u>			

# **Burlington Resources Oil & Gas Company, LP**

## **San Juan Basin**

### **Closure Plan**

In accordance with Rule 19.15.17.12 NMAC the following information describes the closure requirements of temporary pits on Burlington Resources Oil & Gas Company, LP (BR) locations. This is BR's standard procedure for all temporary pits. A separate plan will be submitted for any temporary pit which does not conform to this plan.

All closure activities will include proper documentation and be available for review upon request and will be submitted to OCD within 60 days of closure of pit closure. Closure report will be filed on C-144 and incorporate the following:

- Details on Capping and Covering, where applicable.
- Plot Plan (Pit Diagram)
- Inspection Reports
- Sampling Results
- C-105
- Copy of Deed Notice will be filed with County Clerk

#### **General Plan:**

1. All free standing liquids will be removed at the start of the pit closure process from the pit and disposed of in a division-approved facility or recycle, reuse or reclaim the liquids in a manner that the appropriate division district office approves. The facilities to be used will be Basin Disposal (Permit #NM-01-005) and Envirotech Land Farm (Permit #NM-01-011).
2. The preferred method of closure for all temporary pits will be on-site burial, assuming that all the criteria listed in sub-section (B) of 19.15.17.13 are met.
3. The surface owner shall be notified of BR's closing of the temporary pit prior to closure as per the approved closure plan via certified mail, return receipt requested.
4. Within 6 months of the Rig Off status occurring BR will ensure that temporary pits are closed, re-contoured, and reseeded.
5. Notice of Closure will be given prior to closure to the Aztec Division office between 72 hours and one week via email, or verbally. The notification of closure will include the following:
  - i. Operator's name
  - ii. Location by Unit Letter, Section, Township, and Range. Well name and API number.
6. Liner of temporary pit shall be removed above "mud level" after stabilization. Removal of liner will consist of manually or mechanically cutting liner at mud level and removing all remaining liner. Care will be taken to remove "All" of the liner i.e., edges of liner entrenched or buried. All excessive liner will be disposed of at the San Juan County Landfill located on CR 3100.
7. Pit contents shall be mixed with non-waste containing, earthen material in order to achieve the solidification process. The solidification process will be accomplished using a combination of natural drying and mechanically mixing. Pit contents will be mixed with non-waste, earthen material to a consistency that is deemed a safe and stable. The mixing ratio shall not exceed 3 parts clean soil to 1 part pit contents.
8. A five point composite sample will be taken of the pit using sampling tools and all samples tested per Subsection B of 19.15.17.13(B)(1)(b). In the event that the criteria are not met, all contents will be handled per Subparagraph (a) of Paragraph (1) of Subsection B of 19.15.17.13 i.e., Dig and haul.

<b>Components</b>	<b>Tests Method</b>	<b>Limit (mg/Kg)</b>
Benzene	EPA SW-846 8021B or 8260B	0.2
BTEX	EPA SW-846 8021B or 8260B	50
TPH	EPA SW-846 418.1	2500
GRO/DRO	EPA SW-846 8015M	500
Chlorides	EPA 300.1	1000/500

9. Upon completion of solidification and testing standards being passed, the pit area will be backfilled with compacted, non-waste containing, earthen material. A minimum of four feet of cover shall be achieved and the cover shall include one foot of suitable material to establish vegetation at the site, or the background thickness of topsoil, whichever is greater. If standard testing fails BR will dig and haul all contents pursuant to 19.15.17.13.i.a. After doing such, confirmation sampling will be conducted to ensure a release has not occurred.
10. During the stabilization process if the liner is ripped by equipment the Aztec OCD office will be notified within 48 hours and the liner will be repaired if possible. If the liner can not be repaired then all contents will be excavated and removed.
11. Dig and Haul Material will be transported to the Envirotech Land Farm located 16 miles south of Bloomfield on Angel Peak Road, CR 7175. Permit # NM010011
12. Re-contouring of location will match fit, shape, line, form and texture of the surrounding. Re-shaping will include drainage control, prevent ponding, and prevent erosion. Natural drainages will be unimpeded and water bars and/or silt traps will be place in areas where needed to prevent erosion on a large scale. Final re-contour shall have a uniform appearance with smooth surface, fitting the natural landscape.
13. Notification will be sent to OCD when the reclaimed area is seeded.
14. BR shall seed the disturbed areas the first growing season after the operator closes the pit. Seeding will be accomplished via drilling on the contour whenever practical or by other division-approved methods. BLM stipulated seed mixes will used on federal lands. Vegetative cover will equal 70% of the native perennial vegetative cover (un-impacted) consisting of at least three native plant species, including at least one grass, but not including noxious weeds, and maintain that cover through two successive growing seasons. Repeat seeding or planting will be continued until successful vegetative growth occurs.

Type	Variety or Cultivator	PLS/A
Western wheatgrass	Arriba	3.0
Indian ricegrass	Paloma or Rimrock	3.0
Slender wheatgrass	San Luis	2.0
Crested wheatgrass	Hy-crest	3.0
Bottlebrush Squirrealtail	Unknown	2.0
Four-wing Saltbrush	Delar	.25

**Species shall be planted in pounds of pure live seed per acre:**

**Present Pure Live Seed (PLS) = Purity X Germination/100**

**Two lots of seed can be compared on the basis of PLS as follows:**

Source No. One (poor quality)	Source No. two (better quality)
Purity 50 percent	Purity 80 percent
Germination 40 percent	Germination 63 percent
Percent PLS 20 percent	Percent PLS 50 percent
<b>5 lb. bulk seed required to make 1 lb. PLS</b>	<b>2 lb. bulk seed required to make 1 lb. PLS</b>

15. The temporary pit will be located with a steel marker, no less than four inches in diameter, cemented in a hole three feet deep in the center of the onsite burial upon the abandonment of all the wells on the pad. The marker will be flush with the ground to allow access of the active well pad and for safety concerns. The marker will include a threaded collar to be used for future abandonment. The top of the marker will contain a welded steel 12" square plate that indicates the onsite burial of the temporary pit. The plate will be easily removable and a four foot tall riser will be threaded into the top of the collar marker and welded around the base with the operator's information at the time of all wells on the pad are abandoned. The operator's information will include the following: Operator Name, Lease Name, Well Name and number, Unit Number, Section, Township, Range and an indicator that the marker is an onsite burial location.