

District I
1625 N French Dr., Hobbs, NM 88240
District II
1301 W Grand Ave., Artesa, NM 88210
District III
1000 Rio Brazos Rd., Aztec, NM 87410
District IV
1220 S St Francis Dr., Santa Fe, NM 87505

State of New Mexico
Energy Minerals and Natural Resources
Department
Oil Conservation Division
1220 South St. Francis Dr.
Santa Fe, NM 87505

Form C-144
July 21, 2008

For temporary pits, closed-loop systems, and below-grade tanks, submit to the appropriate NMOCD District Office

For permanent pits and exceptions submit to the Santa Fe Environmental Bureau office and provide a copy to the appropriate NMOCD District Office

1926

Pit, Closed-Loop System, Below-Grade Tank, or
Proposed Alternative Method Permit or Closure Plan Application

- Type of action: Permit of a pit, closed-loop system, below-grade tank, or proposed alternative method
 Closure of a pit, closed-loop system, below-grade tank, or proposed alternative method
 Modification to an existing permit
 Closure plan only submitted for an existing permitted or non-permitted pit, closed-loop system, below-grade tank, or proposed alternative method

Instructions: Please submit one application (Form C-144) per individual pit, closed-loop system, below-grade tank or alternative request

Please be advised that approval of this request does not relieve the operator of liability should operations result in pollution of surface water, ground water or the environment. Nor does approval relieve the operator of its responsibility to comply with any other applicable governmental authority's rules, regulations or ordinances.

1
Operator: Burlington Resources Oil & Gas Company, LP OGRID#: 14538
Address: PO Box 4289, Farmington, NM 87499
Facility or well name: San Juan 29-7 Unit No. 589
API Number: 30-039-30403 OCD Permit Number: _____
U/L or Qtr/Qtr: O(SW/SE) Section: 21 Township: 29N Range: 7W County: Rio Arriba
Center of Proposed Design: Latitude: 36.70633°N Longitude: 107.57253°W NAD: 1927 1983
Surface Owner: Federal State Private Tribal Trust or Indian Allotment

2
 Pit: Subsection F or G of 19.15.17.11 NMAC
Temporary: Drilling Workover
 Permanent Emergency Cavitation P&A
 Lined Unlined Liner type: _____ Thickness 12 mil LLDPE HDPE PVC Other _____
 String-Reinforced
Liner Seams: Welded Factory Other _____ Volume: 4400 bbl Dimensions L 65' x W 45' x D 10'

3
 Closed-loop System: Subsection H of 19.15.17.11 NMAC
Type of Operation: P&A Drilling a new well Workover or Drilling (Applies to activities which require prior approval of a permit or notice of intent)
 Drying Pad Above Ground Steel Tanks Haul-off Bins Other _____
 Lined Unlined Liner type: _____ Thickness _____ mil LLDPE HDPE PVD Other _____
Liner Seams: Welded Factory Other _____

4
 Below-grade tank: Subsection I of 19.15.17.11 NMAC
Volume: _____ bbl Type of fluid: _____
Tank Construction material: _____
 Secondary containment with leak detection Visible sidewalls, liner, 6-inch lift and automatic overflow shut-off
 Visible sidewalls and liner Visible sidewalls only Other _____
Liner Type: _____ Thickness _____ mil HDPE PVC Other _____

5
 Alternative Method:
Submittal of an exception request is required. Exceptions must be submitted to the Santa Fe Environmental Bureau office for consideration of approval

6
Fencing: Subsection D of 19 15.17.11 NMAC (*Applies to permanent pit, temporary pits, and below-grade tanks*)
 Chain link, six feet in height, two strands of barbed wire at top (*Required if located within 1000 feet of a permanent residence, school, hospital, institution or church*)
 Four foot height, four strands of barbed wire evenly spaced between one and four feet
 Alternate Please specify 4' hogwire fence with a single strand of barbed wire on top.

7
Netting: Subsection E of 19 15.17.11 NMAC (*Applies to permanent pits and permanent open top tanks*)
 Screen Netting Other _____
 Monthly inspections (*If netting or screening is not physically feasible*)

8
Signs: Subsection C of 19.15.17 11 NMAC
 12" X 24", 2" lettering, providing Operator's name, site location, and emergency telephone numbers
 Signed in compliance with 19.15 3 103 NMAC

9
Administrative Approvals and Exceptions:
 Justifications and/or demonstrations of equivalency are required Please refer to 19.15 17 NMAC for guidance
 Please check a box if one or more of the following is requested, if not leave blank:
 Administrative approval(s): Requests must be submitted to the appropriate division district of the Santa Fe Environmental Bureau office for consideration of approval.
 Exception(s): Requests must be submitted to the Santa Fe Environmental Bureau office for consideration of approval.

10
Siting Criteria (regarding permitting): 19.15.17.10 NMAC
Instructions: The applicant must demonstrate compliance for each siting criteria below in the application. Recommendations of acceptable source material are provided below. Requests regarding changes to certain siting criteria may require administrative approval from the appropriate district office or may be considered an exception which must be submitted to the Santa Fe Environmental Bureau Office for consideration of approval. Applicant must attach justification for request. Please refer to 19.15.17.10 NMAC for guidance. Siting criteria does not apply to drying pads or above grade-tanks associated with a closed-loop system.

Ground water is less than 50 feet below the bottom of the temporary pit, permanent pit, or below-grade tank. - NM Office of the State Engineer - iWATERS database search; USGS; Data obtained from nearby wells	<input type="checkbox"/> Yes <input checked="" type="checkbox"/> No
Within 300 feet of a continuously flowing watercourse, or 200 feet of any other watercourse, lakebed, sinkhole, or playa lake (measured from the ordinary high-water mark). - Topographic map; Visual inspection (certification) of the proposed site	<input type="checkbox"/> Yes <input checked="" type="checkbox"/> No
Within 300 feet from a permanent residence, school, hospital, institution, or church in existence at the time of initial application. <i>(Applies to temporary, emergency, or cavitation pits and below-grade tanks)</i> - Visual inspection (certification) of the proposed site; Aerial photo; Satellite image	<input type="checkbox"/> Yes <input checked="" type="checkbox"/> No <input type="checkbox"/> NA
Within 1000 feet from a permanent residence, school, hospital, institution, or church in existence at the time of initial application. <i>(Applied to permanent pits)</i> - Visual inspection (certification) of the proposed site; Aerial photo; Satellite image	<input type="checkbox"/> Yes <input type="checkbox"/> No <input checked="" type="checkbox"/> NA
Within 500 horizontal feet of a private, domestic fresh water well or spring that less than five households use for domestic or stock watering purposes, or within 1000 horizontal feet of any other fresh water well or spring, in existence at the time of initial application. - NM Office of the State Engineer - iWATERS database search; Visual inspection (certification) of the proposed site.	<input type="checkbox"/> Yes <input checked="" type="checkbox"/> No
Within incorporated municipal boundaries or within a defined municipal fresh water well field covered under a municipal ordinance adopted pursuant to NMSA 1978, Section 3-27-3, as amended - Written confirmation or verification from the municipality; Written approval obtained from the municipality	<input type="checkbox"/> Yes <input checked="" type="checkbox"/> No
Within 500 feet of a wetland. - US Fish and Wildlife Wetland Identification map; Topographic map; Visual inspection (certification) of the proposed site	<input type="checkbox"/> Yes <input checked="" type="checkbox"/> No
Within the area overlying a subsurface mine. - Written confirmation or verification or map from the NM EMNRD - Mining and Mineral Division	<input type="checkbox"/> Yes <input checked="" type="checkbox"/> No
Within an unstable area. - Engineering measures incorporated into the design; NM Bureau of Geology & Mineral Resources; USGS; NM Geological Society; Topographic map	<input type="checkbox"/> Yes <input checked="" type="checkbox"/> No
Within a 100-year floodplain - FEMA map	<input type="checkbox"/> Yes <input checked="" type="checkbox"/> No

11

Temporary Pits, Emergency Pits and Below-grade Tanks Permit Application Attachment Checklist: Subsection B of 19.15.17.9 NMAC*Instructions: Each of the following items must be attached to the application. Please indicate, by a check mark in the box, that the documents are attached.*

- Hydrogeologic Report (Below-grade Tanks) - based upon the requirements of Paragraph (4) of Subsection B of 19.15.17.9 NMAC
- Hydrogeologic Data (Temporary and Emergency Pits) - based upon the requirements of Paragraph (2) of Subsection B of 19.15.17.9
- Siting Criteria Compliance Demonstrations - based upon the appropriate requirements of 19.15.17.10 NMAC
- Design Plan - based upon the appropriate requirements of 19.15.17.11 NMAC
- Operating and Maintenance Plan - based upon the appropriate requirements of 19.15.17.12 NMAC
- Closure Plan (Please complete Boxes 14 through 18, if applicable) - based upon the appropriate requirements of Subsection C of 19.15.17.9 NMAC and 19.15.17.13 NMAC

Previously Approved Design (attach copy of design) API _____ or Permit _____

12

Closed-loop Systems Permit Application Attachment Checklist: Subsection B of 19.15.17.9 NMAC*Instructions: Each of the following items must be attached to the application. Please indicate, by a check mark in the box, that the documents are attached.*

- Geologic and Hydrogeologic Data (only for on-site closure) - based upon the requirements of Paragraph (3) of Subsection B of 19.15.17.9
- Siting Criteria Compliance Demonstrations (only for on-site closure) - based upon the appropriate requirements of 19.15.17.10 NMAC
- Design Plan - based upon the appropriate requirements of 19.15.17.11 NMAC
- Operating and Maintenance Plan - based upon the appropriate requirements of 19.15.17.12 NMAC
- Closure Plan (Please complete Boxes 14 through 18, if applicable) - based upon the appropriate requirements of Subsection C of 19.15.17.9 NMAC and 19.15.17.13 NMAC

Previously Approved Design (attach copy of design) API _____

Previously Approved Operating and Maintenance Plan API _____

13

Permanent Pits Permit Application Checklist: Subsection B of 19.15.17.9 NMAC*Instructions: Each of the following items must be attached to the application. Please indicate, by a check mark in the box, that the documents are attached.*

- Hydrogeologic Report - based upon the requirements of Paragraph (I) of Subsection B of 19.15.17.9 NMAC
- Siting Criteria Compliance Demonstrations - based upon the appropriate requirements of 19.15.17.10 NMAC
- Climatological Factors Assessment
- Certified Engineering Design Plans - based upon the appropriate requirements of 19.15.17.11 NMAC
- Dike Protection and Structural Integrity Design: based upon the appropriate requirements of 19.15.17.11 NMAC
- Leak Detection Design - based upon the appropriate requirements of 19.15.17.11 NMAC
- Liner Specifications and Compatibility Assessment - based upon the appropriate requirements of 19.15.17.11 NMAC
- Quality Control/Quality Assurance Construction and Installation Plan
- Operating and Maintenance Plan - based upon the appropriate requirements of 19.15.17.12 NMAC
- Freeboard and Overtopping Prevention Plan - based upon the appropriate requirements of 19.15.17.11 NMAC
- Nuisance or Hazardous Odors, including H₂S, Prevention Plan
- Emergency Response Plan
- Oil Field Waste Stream Characterization
- Monitoring and Inspection Plan
- Erosion Control Plan
- Closure Plan - based upon the appropriate requirements of Subsection C of 19.15.17.9 NMAC and 19.15.17.13 NMAC

14

Proposed Closure: 19.15.17.13 NMAC*Instructions: Please complete the applicable boxes, Boxes 14 through 18, in regards to the proposed closure plan.*

Type: Drilling Workover Emergency Cavitation P&A Permanent Pit Below-grade Tank Closed-loop System
 Alternative

Proposed Closure Method: Waste Excavation and Removal
 Waste Removal (Closed-loop systems only)
 On-site Closure Method (only for temporary pits and closed-loop systems)
 In-place Burial On-site Trench
 Alternative Closure Method (Exceptions must be submitted to the Santa Fe Environmental Bureau for consideration)

15

Waste Excavation and Removal Closure Plan Checklist: (19.15.17.13 NMAC) *Instructions: Each of the following items must be attached to the closure plan.**Please indicate, by a check mark in the box, that the documents are attached.*

- Protocols and Procedures - based upon the appropriate requirements of 19.15.17.13 NMAC
- Confirmation Sampling Plan (if applicable) - based upon the appropriate requirements of Subsection F of 19.15.17.13 NMAC
- Disposal Facility Name and Permit Number (for liquids, drilling fluids and drill cuttings)
- Soil Backfill and Cover Design Specifications - based upon the appropriate requirements of Subsection H of 19.15.17.13 NMAC
- Re-vegetation Plan - based upon the appropriate requirements of Subsection I of 19.15.17.13 NMAC
- Site Reclamation Plan - based upon the appropriate requirements of Subsection G of 19.15.17.13 NMAC

Waste Removal Closure For Closed-loop Systems That Utilize Above Ground Steel Tanks or Haul-off Bins Only: (19.15.17.13.D NMAC)

Instructions: Please identify the facility or facilities for the disposal of liquids, drilling fluids and drill cuttings. Use attachment if more than two facilities are required

Disposal Facility Name _____ Disposal Facility Permit #. _____

Disposal Facility Name _____ Disposal Facility Permit #: _____

Will any of the proposed closed-loop system operations and associated activities occur on or in areas that *will not* be used for future service and operations?
 Yes (If yes, please provide the information) No

Required for impacted areas which will not be used for future service and operations.

- Soil Backfill and Cover Design Specification - based upon the appropriate requirements of Subsection H of 19.15.17.13 NMAC
- Re-vegetation Plan - based upon the appropriate requirements of Subsection I of 19.15.17.13 NMAC
- Site Reclamation Plan - based upon the appropriate requirements of Subsection G of 19.15.17.13 NMAC

Siting Criteria (Regarding on-site closure methods only): 19.15.17.10 NMAC

Instructions Each siting criteria requires a demonstration of compliance in the closure plan. Recommendations of acceptable source material are provided below. Requests regarding changes to certain siting criteria may require administrative approval from the appropriate district office or may be considered an exception which must be submitted to the Santa Fe Environmental Bureau office for consideration of approval. Justifications and/or demonstrations of equivalency are required. Please refer to 19.15.17.10 NMAC for guidance.

Ground water is less than 50 feet below the bottom of the buried waste. - NM Office of the State Engineer - iWATERS database search; USGS. Data obtained from nearby wells	<input type="checkbox"/> Yes <input checked="" type="checkbox"/> No <input type="checkbox"/> N/A
Ground water is between 50 and 100 feet below the bottom of the buried waste - NM Office of the State Engineer - iWATERS database search; USGS; Data obtained from nearby wells	<input type="checkbox"/> Yes <input checked="" type="checkbox"/> No <input type="checkbox"/> N/A
Ground water is more than 100 feet below the bottom of the buried waste. - NM Office of the State Engineer - iWATERS database search; USGS, Data obtained from nearby wells	<input checked="" type="checkbox"/> Yes <input type="checkbox"/> No <input type="checkbox"/> N/A
Within 300 feet of a continuously flowing watercourse, or 200 feet of any other significant watercourse or lakebed, sinkhole, or playa lake (measured from the ordinary high-water mark). - Topographic map; Visual inspection (certification) of the proposed site	<input type="checkbox"/> Yes <input checked="" type="checkbox"/> No
Within 300 feet from a permanent residence, school, hospital, institution, or church in existence at the time of initial application. - Visual inspection (certification) of the proposed site; Aerial photo; satellite image	<input type="checkbox"/> Yes <input checked="" type="checkbox"/> No <input type="checkbox"/> Yes <input checked="" type="checkbox"/> No
Within 500 horizontal feet of a private, domestic fresh water well or spring that less than five households use for domestic or stock watering purposes, or within 1000 horizontal feet of any other fresh water well or spring, in existence at the time of the initial application. - NM Office of the State Engineer - iWATERS database; Visual inspection (certification) of the proposed site	<input type="checkbox"/> Yes <input checked="" type="checkbox"/> No
Within incorporated municipal boundaries or within a defined municipal fresh water well field covered under a municipal ordinance adopted pursuant to NMSA 1978, Section 3-27-3, as amended. - Written confirmation or verification from the municipality; Written approval obtained from the municipality	<input type="checkbox"/> Yes <input checked="" type="checkbox"/> No
Within 500 feet of a wetland - US Fish and Wildlife Wetland Identification map; Topographic map; Visual inspection (certification) of the proposed site	<input type="checkbox"/> Yes <input checked="" type="checkbox"/> No
Within the area overlying a subsurface mine. - Written confirmation or verification of map from the NM EMNRD-Mining and Mineral Division	<input type="checkbox"/> Yes <input checked="" type="checkbox"/> No
Within an unstable area. - Engineering measures incorporated into the design; NM Bureau of Geology & Mineral Resources; USGS; NM Geological Society; Topographic map	<input type="checkbox"/> Yes <input checked="" type="checkbox"/> No
Within a 100-year floodplain. - FEMA map	<input type="checkbox"/> Yes <input checked="" type="checkbox"/> No

On-Site Closure Plan Checklist: (19.15.17.13 NMAC) *Instructions: Each of the following items must be attached to the closure plan. Please indicate, by a check mark in the box, that the documents are attached.*

- Siting Criteria Compliance Demonstrations - based upon the appropriate requirements of 19.15.17.10 NMAC
- Proof of Surface Owner Notice - based upon the appropriate requirements of Subsection F of 19.15.17.13 NMAC
- Construction/Design Plan of Burial Trench (if applicable) based upon the appropriate requirements of 19.15.17.11 NMAC
- Construction/Design Plan of Temporary Pit (for in place burial of a drying pad) - based upon the appropriate requirements of 19.15.17.11 NMAC
- Protocols and Procedures - based upon the appropriate requirements of 19.15.17.13 NMAC
- Confirmation Sampling Plan (if applicable) - based upon the appropriate requirements of Subsection F of 19.15.17.13 NMAC
- Waste Material Sampling Plan - based upon the appropriate requirements of Subsection F of 19.15.17.13 NMAC
- Disposal Facility Name and Permit Number (for liquids, drilling fluids and drill cuttings or in case on-site closure standards cannot be achieved)
- Soil Cover Design - based upon the appropriate requirements of Subsection H of 19.15.17.13 NMAC
- Re-vegetation Plan - based upon the appropriate requirements of Subsection I of 19.15.17.13 NMAC
- Site Reclamation Plan - based upon the appropriate requirements of Subsection G of 19.15.17.13 NMAC

19

Operator Application Certification:

I hereby certify that the information submitted with this application is true, accurate and complete to the best of my knowledge and belief.

Name (Print) Ethel Tally Title Staff Regulatory Technician
Signature: Ethel Tally Date: 10-6-08
e-mail address: Ethel.Tally@ConocoPhillips.com Telephone: 505-599-4027

20

OCD Approval: Permit Application (including closure plan) Closure Plan (only) OCD Conditions (see attachment)

OCD Representative Signature: Brandon Powell **Approval Date:** 11-5-08
Title: Enviro/Spec **OCD Permit Number:** _____

21

Closure Report (required within 60 days of closure completion): Subsection K of 19 15 17 13 NMAC

Instructions: Operators are required to obtain an approved closure plan prior to implementing any closure activities and submitting the closure report. The closure report is required to be submitted to the division within 60 days of the completion of the closure activities. Please do not complete this section of the form until an approved closure plan has been obtained and the closure activities have been completed.

Closure Completion Date: _____

22

Closure Method:

- Waste Excavation and Removal On-site Closure Method Alternative Closure Method Waste Removal (Closed-loop systems only)
 If different from approved plan, please explain.

23

Closure Report Regarding Waste Removal Closure For Closed-loop Systems That Utilize Above Ground Steel Tanks or Haul-off Bins Only:

Instructions: Please identify the facility or facilities for where the liquids, drilling fluids and drill cuttings were disposed. Use attachment if more than two facilities were utilized.

Disposal Facility Name: _____ Disposal Facility Permit Number: _____
Disposal Facility Name: _____ Disposal Facility Permit Number: _____

Were the closed-loop system operations and associated activities performed on or in areas that will not be used for future service and operations?

- Yes (If yes, please demonstrate compliance to the items below) No

Required for impacted areas which will not be used for future service and operations:

- Site Reclamation (Photo Documentation)
 Soil Backfilling and Cover Installation
 Re-vegetation Application Rates and Seeding Technique

24

Closure Report Attachment Checklist: *Instructions: Each of the following items must be attached to the closure report. Please indicate, by a check mark in the box, that the documents are attached.*

- Proof of Closure Notice (surface owner and division)
 Proof of Deed Notice (required for on-site closure)
 Plot Plan (for on-site closures and temporary pits)
 Confirmation Sampling Analytical Results (if applicable)
 Waste Material Sampling Analytical Results (if applicable)
 Disposal Facility Name and Permit Number
 Soil Backfilling and Cover Installation
 Re-vegetation Application Rates and Seeding Technique
 Site Reclamation (Photo Documentation)

On-site Closure Location: Latitude: _____ Longitude: _____ NAD 1927 1983

25

Operator Closure Certification:

I hereby certify that the information and attachments submitted with this closure report is true, accurate and complete to the best of my knowledge and belief. I also certify that the closure complies with all applicable closure requirements and conditions specified in the approved closure plan.

Name (Print): _____ Title: _____
Signature: _____ Date: _____
e-mail address: _____ Telephone: _____

**New Mexico Office of the State Engineer
POD Reports and Downloads**

Township: 29N Range: 07W Sections: 15,16,17,20,21,22,27,28,29

NAD27 X: Y: Zone: Search Radius:

County: Basin: Number: Suffix:

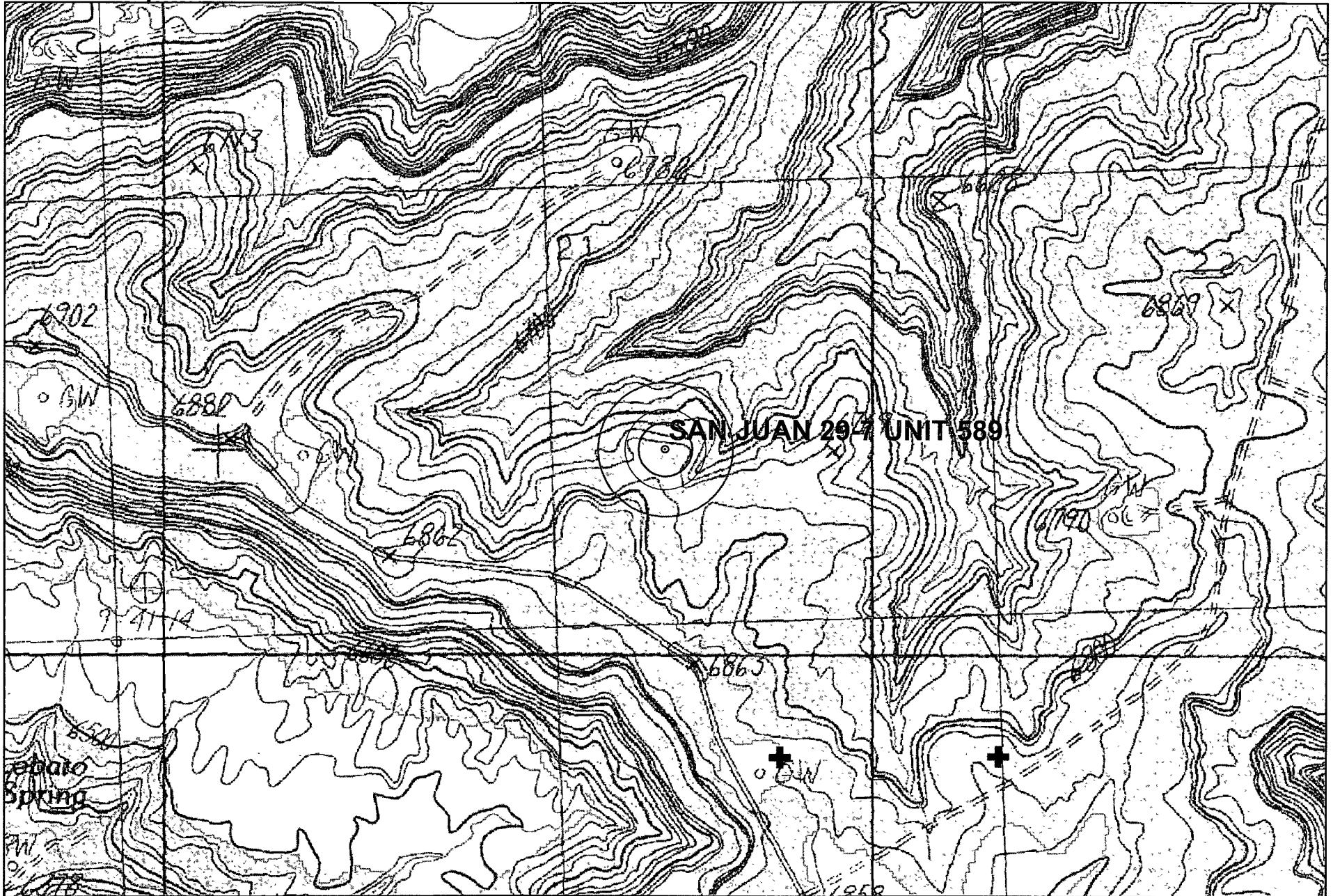
Owner Name: (First) (Last) Non-Domestic Domestic
 All

WATER COLUMN REPORT 10/06/2008

(quarters are 1=NW 2=NE 3=SW 4=SE)
(quarters are biggest to smallest)

POD Number	Tws	Rng	Sec	q	q	q	Zone	X	Y	Depth Well	Depth Water	Water Column
SJ 01112	29N	07W	28	4	4					2453	900	155
SJ 00039	29N	07W	29	3	2					585	435	15

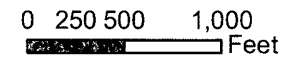
Record Count: 2



Data Source
Aerial flown locally Sedgewick in 2005.
Wetlands Data Aquired from U.S Fish
and Wildlife [Http://wetlandswms.er.usgs.gov](http://wetlandswms.er.usgs.gov)
USGS Topo

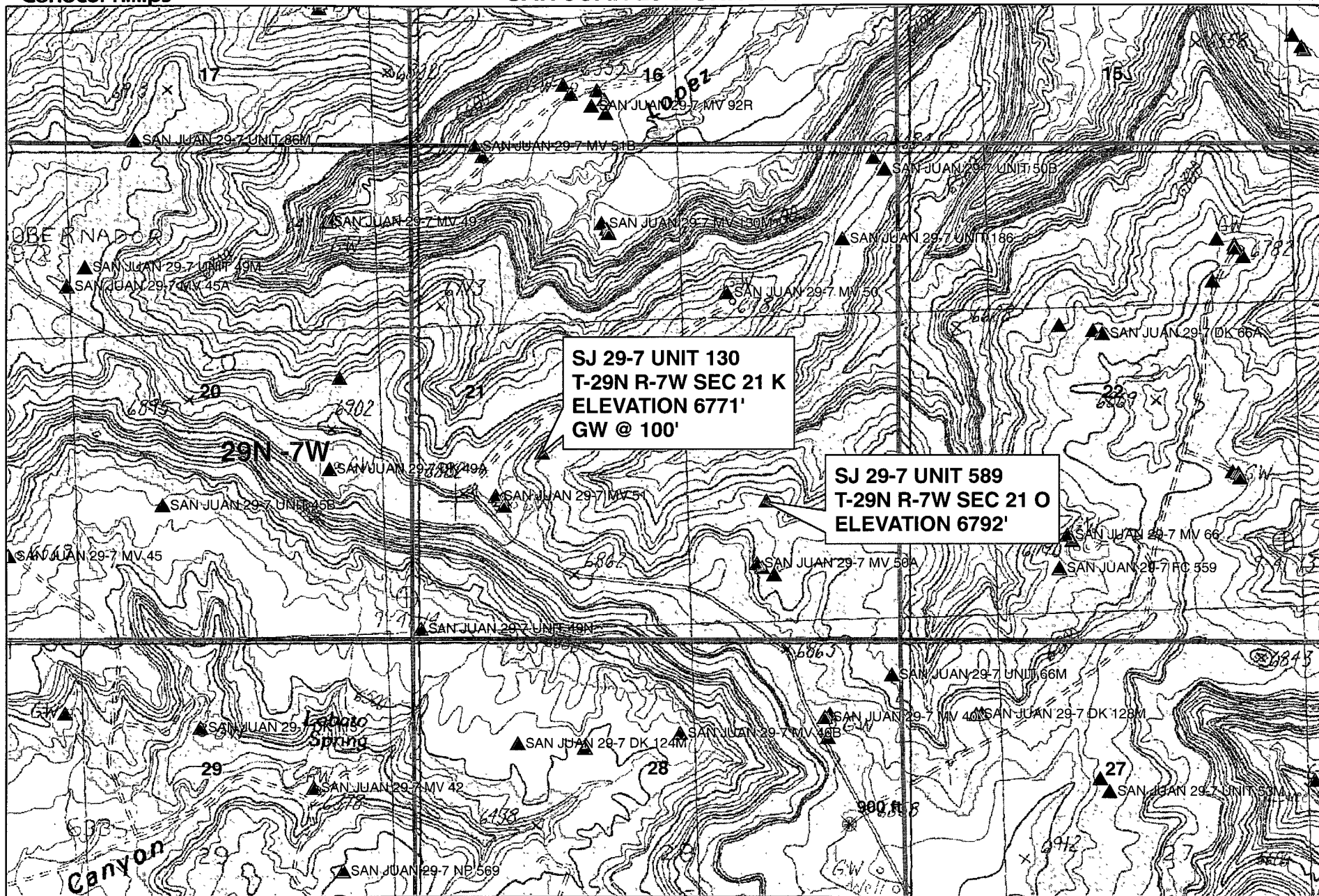


 iWaters  COP



1:11,208

NAD_1983_SP
NM West_FIPS_
3003
Aug 26, 2008



SJ 29-7 UNIT 130
T-29N R-7W SEC 21 K
ELEVATION 6771'
GW @ 100'

SJ 29-7 UNIT 589
T-29N R-7W SEC 21 O
ELEVATION 6792'

Data Source
 Aerial flown locally Sedgewick in 2005.
 Wetlands Data Aquired from U.S. Fish
 and Wildlife [Http://wetlands/wms.er.usgs.gov](http://wetlands/wms.er.usgs.gov)
 USGS Topo

iWaters
 ☒ SEC
 ☒ QTR-QTR
 ☒ QTR-QTR-QTR

Wetlands
 City Limits

iWaters
 JoinedDSM-Hydro 9-5-08

0 600 1,200
 Feet
 1:16,182

NAD_1983_SP_
 NM West_FIPS_
 3003

1191

30-039-23776

E

DATA SHEET FOR DEEP GROUND BED CATHODIC PROTECTION WELLS
NORTHWESTERN NEW MEXICO

(Submit 3 copies to OCD Aztec Office)

Operator MERIDIAN OIL INC. Location: Unit K Sec. 21 Twp 29 Rng 7

Name of Well/Wells or Pipeline Serviced SAN JUAN 29-7 UNIT #130

cps 1897w

Elevation 6771' Completion Date 7/30/82 Total Depth 400' Land Type* N/A

Casing, Sizes, Types & Depths N/A

If Casing is cemented, show amounts & types used N/A

If Cement or Bentonite Plugs have been placed, show depths & amounts used

N/A

Depths & thickness of water zones with description of water when possible:

Fresh, Clear, Salty, Sulphur, Etc. 100'

Depths gas encountered: N/A

Type & amount of coke breeze used: N/A

Depths anodes placed: 270', 210', 200', 190', 160', 150', 140', 120', 110', 100'

Depths vent pipes placed: N/A

Vent pipe perforations: 320'

Remarks: gb #1

RECEIVED

MAY 31 1991

OIL CON. DIV.

DIST. 3

If any of the above data is unavailable, please indicate so. Copies of all logs, including Drillers Log, Water Analyses & Well Bore Schematics should be submitted when available. Unplugged abandoned wells are to be included.

*Land Type may be shown: F-Federal; I-Indian; S-State; P-Fee.
If Federal or Indian, add Lease Number.

UNITED STATES
DEPARTMENT OF THE INTERIOR
BUREAU OF LAND MANAGEMENT

SUBMIT IN DUPLICATE*

(See other In-
structions on
reverse side)

Form approved.
Budget Bureau No. 1004-0137
Expires August 31, 1985

WELL COMPLETION OR RECOMPLETION REPORT AND LOG*

1a. TYPE OF WELL: OIL WELL GAS WELL DRY Other _____

b. TYPE OF COMPLETION: NEW WELL WORK OVER DEEPEN PLUG BACK DIFF. RESVR Other _____

2. NAME OF OPERATOR: El Paso Natural Gas Company

3. ADDRESS OF OPERATOR: P. O. Box 4289, Farmington, NM 87499

4. LOCATION OF WELL (Report location clearly and in accordance with any State requirements):
At surface 2025'S, 1400'W
At top prod. interval reported below
At total depth _____

5. LEASE DESIGNATION AND SERIAL NO.: SF 078424

6. IF INDIAN, ALLOTTEE OR TRIBE NAME: _____

7. UNIT AGREEMENT NAME: San Juan 29-7 Unit

8. FARM OR LEASE NAME: San Juan 29-7 Unit

9. WELL NO.: 130

10. FIELD AND POOL, OR WILDCAT: Basin Dakota

11. SEC. T. R. M., OR BLOCK AND SURVEY OR AREA: Sec. 21, T-29-N, R-7-W NMPM

12. COUNTY OR PARISH: Rio Arriba

13. STATE: NM

RECEIVED
OCT 02 1985
SEP 24 1985
BUREAU OF LAND MANAGEMENT
FARMINGTON RESOURCE AREA

15. DATE SPUNDED: 8-1-85

16. DATE T.D. REACHED: 8-10-85

17. DATE COMPL. (Ready to prod.): 9-13-85

18. ELEVATIONS (DF, RKB, RT, GR, ETC)*: 6771' GL

19. ELEV. CASINGHEAD: 6771'

20. TOTAL DEPTH MD & TVD: 8025'

21. PLUG. BACK T.D., MD & TVD: 8013'

22. IF MULTIPLE COMPL. HOW MANY*: One

23. INTERVALS DRILLED BY: Rotary

ROTARY TOOLS: Rotary

CABLE TOOLS: No

24. PRODUCING INTERVAL(S), OF THIS COMPLETION—TOP, BOTTOM, NAME (MD AND TVD)*: 7812-8021' (Basin Dakota)

25. WAS DIRECTIONAL SURVEY MADE: No

26. TYPE ELECTRIC AND OTHER LOGS RUN: Comp. Density Sidewall NL; GR-C-Log; Temp. Log; Ind. Log; Temp Surveys

27. WAS WELL CORED: No

28. CASING RECORD (Report all strings set in well)

CASING SIZE	WEIGHT, LB./FT.	DEPTH SET (MD)	HOLE SIZE	CEMENTING RECORD	AMOUNT PULLED
9 5/8"	32.3#	217'	12 1/4"	118 cu ft	
7"	20.0#	3893'	8 3/4"	417 cu ft	
4 1/2"	10.5#	8025'	6 1/4"	626 cu ft	

29. LINER RECORD

SIZE	TOP (MD)	BOTTOM (MD)	SACKS CEMENT*	SCREEN (MD)

30. TUBING RECORD

SIZE	DEPTH SET (MD)	PACKER SET (MD)
1 1/2"	7982'	

31. PERFORATION RECORD (Interval, size and number)

7812, 7814, 7817, 7820, 7823, 7826, 7834, 7837, 7840, 7843, 7849, 7873, 7890, 7903, 7928, 7931, 7934, 7960, 7969, 7978, 7997, 7999, 3015, 8018, 8021 w/1 SPZ

32. ACID, SHOT, FRACTURE, CEMENT SQUEEZE, ETC.

DEPTH INTERVAL (MD)	AMOUNT AND KIND OF MATERIAL USED
7812-8021	81,000# 20/40 sand & 85,439 gals wt

33.* PRODUCTION

DATE FIRST PRODUCTION: 8-26-85

PRODUCTION METHOD (Flowing, gas lift, pumping—size and type of pump): Flowing

WELL STATUS (Producing or shut-in): Shut in

DATE OF TEST	HOURS TESTED	CHOKE SIZE	PROD'N. FOR TEST PERIOD	OIL—BBL.	GAS—MCF	WATER—BBL.	GAS-OIL RATIO
9-13-85	3 Hrs.	3/4"		0	313 MCF	0	0

FLOW. TUBING PRESS.	CASING PRESSURE	CALCULATED 24-HOUR RATE	OIL—BBL.	GAS—MCF.	WATER—BBL.	OIL GRAVITY-API (CORR.)
SI 2203	SI 2115		0	1502	0	0

34. DISPOSITION OF GAS (Sold, used for fuel, vented, etc.): Shut in to be Sold

TEST WITNESSED BY: John Easley

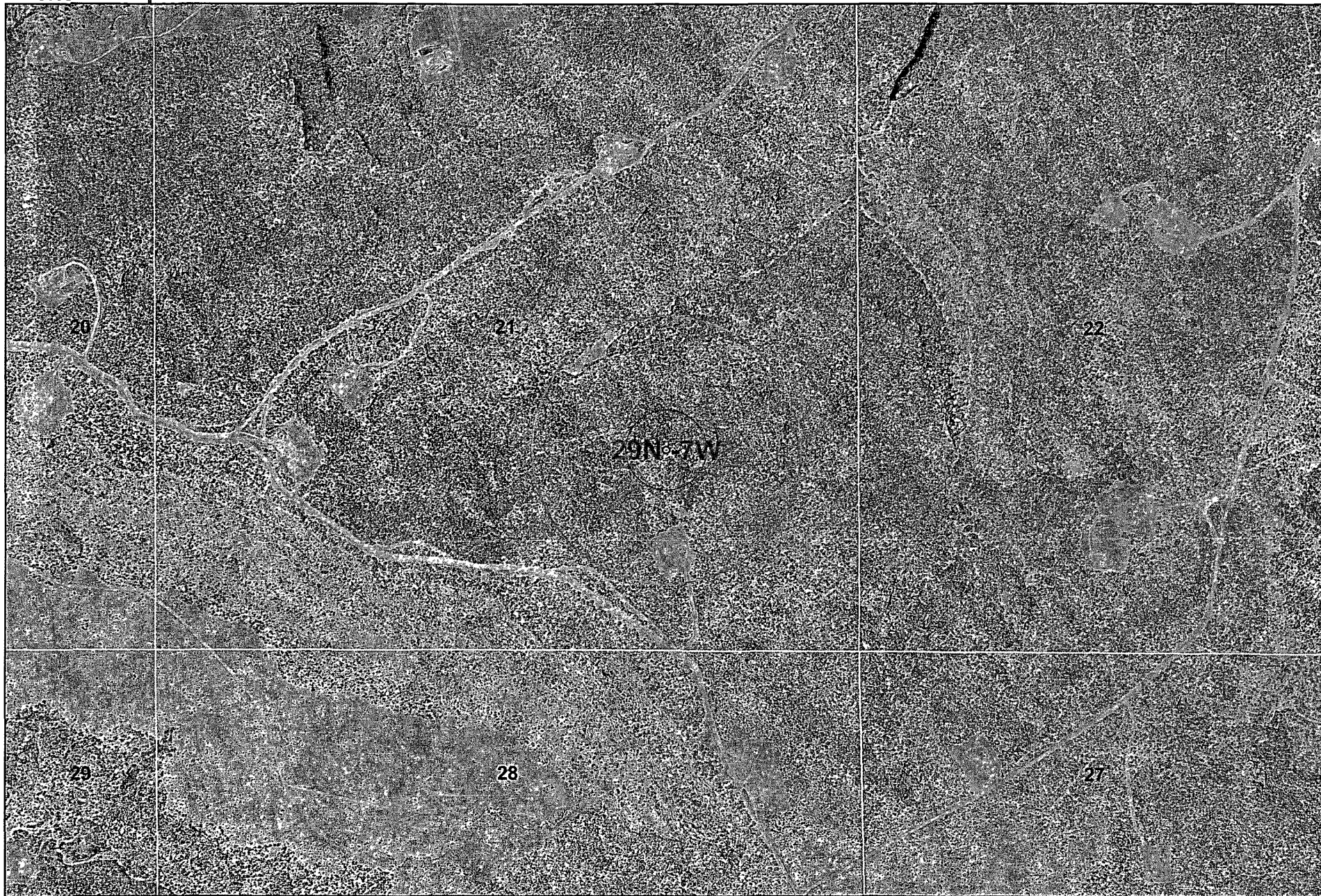
35. LIST OF ATTACHMENTS: Temp Survey

36. I hereby certify that the foregoing and attached information is complete and correct as determined from all available records.

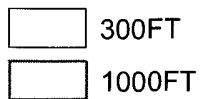
SIGNED: [Signature] TITLE: Drilling Clerk DATE: 9-20-85

*(See Instructions and Spaces for Additional Data on Reverse Side)

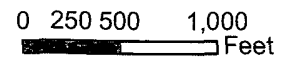
Title 18 U.S.C. Section 1001, makes it a crime for any person knowingly and willfully to make to any department or agency of the United States any false, fictitious or fraudulent statements or representations as to any matter within its jurisdiction.



Data Source
Aerial flown locally Sedgewick in 2005.
Wetlands Data Aquired from U.S. Fish
and Wildlife [Http://wetlandswms.er.usgs.gov](http://wetlandswms.er.usgs.gov)
USGS Topo



1:11,208



NAD_1983_SP_
NM West_FIPS_
3003
Aug 26, 2008

SJ 29-7 Unit 130 / Mines, Mills and Quarries Map

Mines, Mills & Quarries Commodity Groups

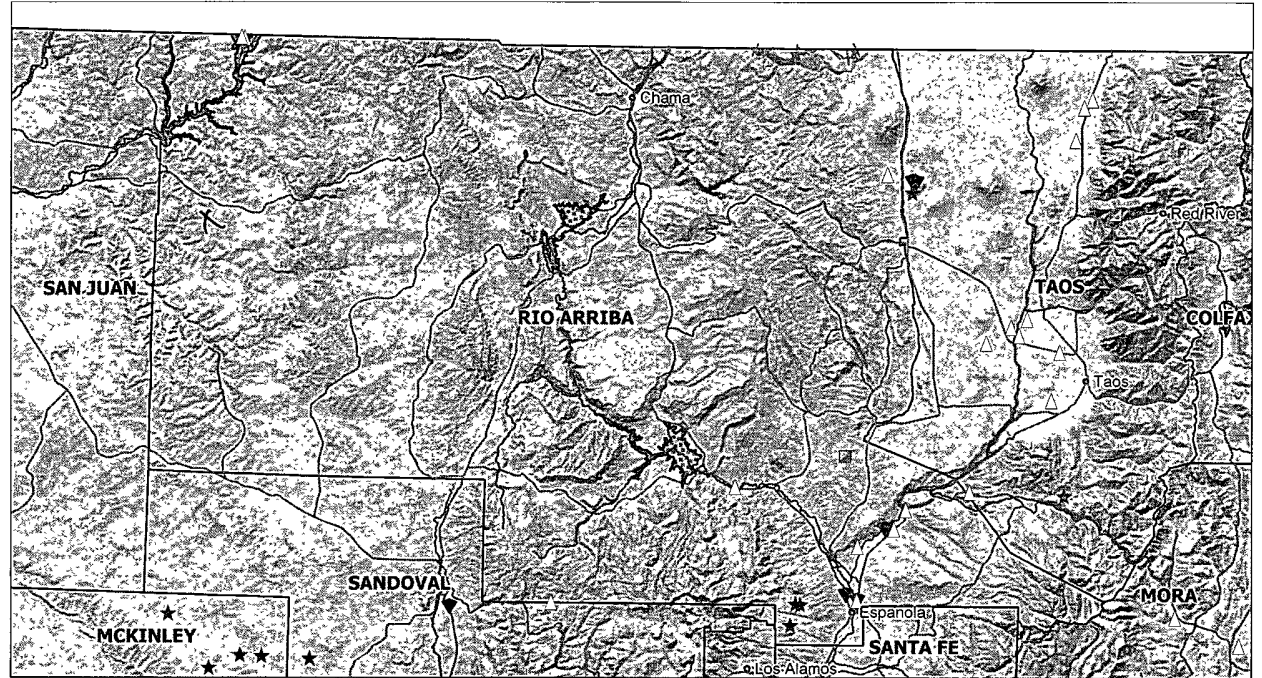
- △ Aggregate & Stone Mines
- ◆ Coal Mines
- ★ Industrial Minerals Mines
- ▼ Industrial Minerals Mills
- ▣ Metal Mines and Mill Concentrate
- Potash Mines & Refineries
- ⊞ Smelters & Refinery Ops.
- ✕ Uranium Mines
- ⊕ Uranium Mills

Population

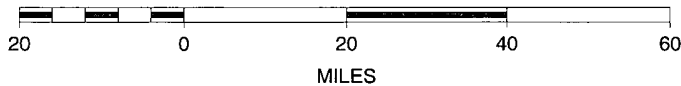
- Cities - major

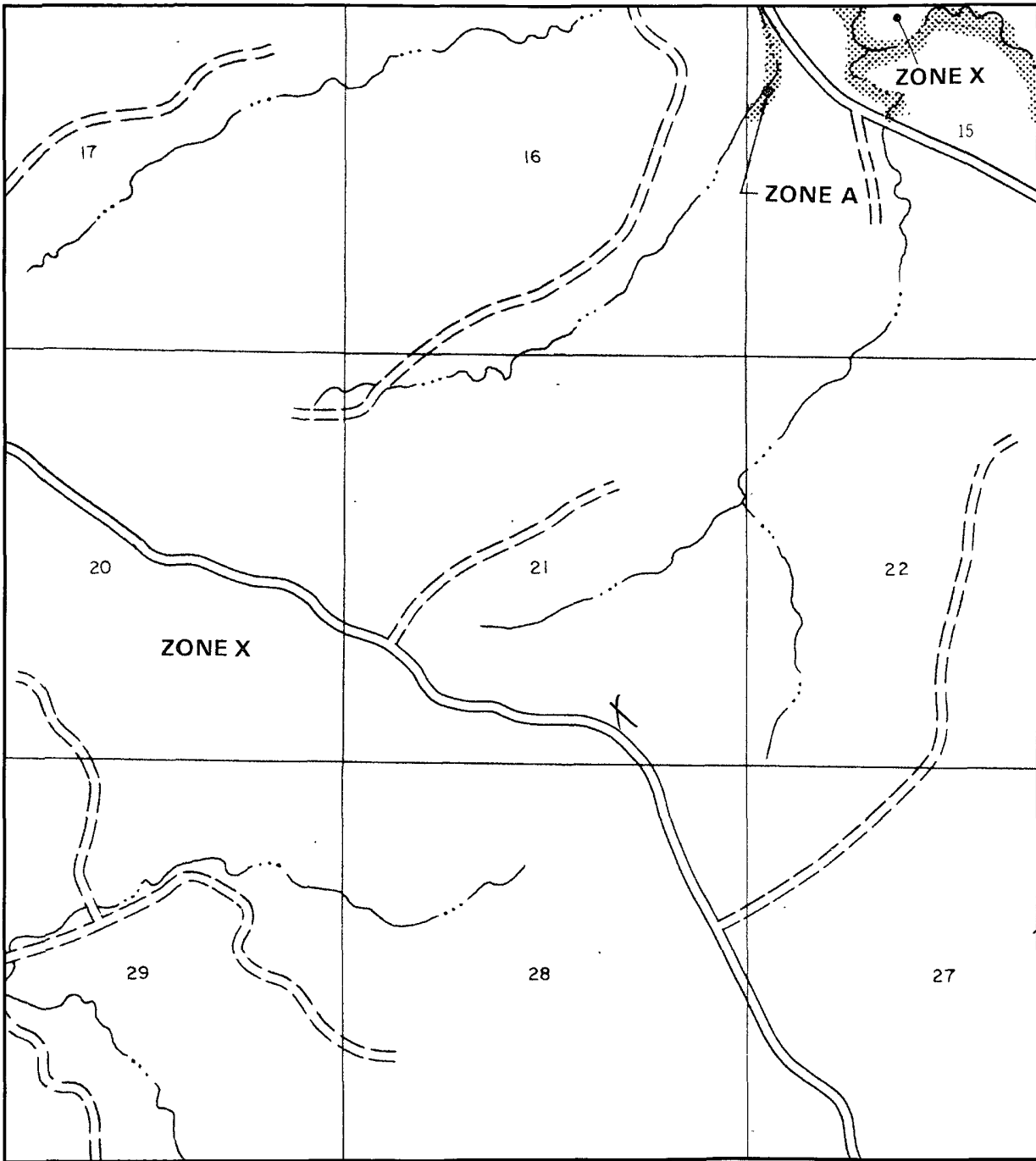
Transportation

- Railways

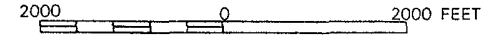


SCALE 1 : 1,461,637





APPROXIMATE SCALE

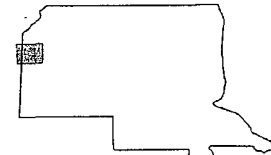


NATIONAL FLOOD INSURANCE PROGRAM

FIRM
FLOOD INSURANCE RATE MAP

**RIO ARRIBA COUNTY,
NEW MEXICO
UNINCORPORATED AREAS**

PANEL 375 OF 1325
(SEE MAP INDEX FOR PANELS NOT PRINTED)



PANEL LOCATION

COMMUNITY-PANEL NUMBER

350049 0375 B

EFFECTIVE DATE:

JANUARY 5, 1989



Federal Emergency Management Agency

This is an official copy of a portion of the above referenced flood map. It was extracted using F-MIT On-Line. This map does not reflect changes or amendments which may have been made subsequent to the date on the title block. For the latest product information about National Flood Insurance Program flood maps check the FEMA Flood Map Store at www.msc.fema.gov

Siting Criteria Compliance Demonstration & Hydro Geologic Analysis

The San Juan 29-7 Unit 589 is not located in an unstable area. The location is not over a mine and is not on the side of a hill as indicated on the Mines, Mills and Quarries Map and Topographic Map. The location of the excavated pit material will not be located within 300' of any continuously flowing watercourse or 200' from any other watercourse as indicated on the Topographic Map. The location is not within a 100-year floodplain area as indicated on the FEMA Map. The groundwater depth is considered to be greater than 100' as determined by the topographic map and the Cathodic well data from the San Juan 29-7 Unit 130 with an elevation of 6771' and groundwater depth of 100'. The subject well has an elevation of 6792' which is greater than the San Juan 29-7 Unit 130, therefore the groundwater depth is greater than 100'. The iWATERS data points are located in section 28 and 29 are depths of 900' and 435' as indicated on the TOPO Map. Using these data points and the cathodic data provided the indication of groundwater depth is greater than 100'. The hydro geologic analysis indicates the groundwater depth and the San Jose formation will create a stable area for this new location.

Hydrogeological report for San Juan 29-7 Unit 589

Regional Hydrogeological context:

The San Jose Formation of Eocene age occurs in New Mexico and Colorado, and its outcrop forms the land surface over much of the eastern half of the central basin. It overlies the Nacimiento Formation in the area generally south of the Colorado-New Mexico State line and overlies the Animas Formation in the area generally north of the State line.

The San Jose Formation was deposited in various fluvial-type environments. In general, the unit consists of an interbedded sequence of sandstone, siltstone, and variegated shale. Thickness of the San Jose Formation generally increases from west to east (200 feet in the west and south to almost 2,700 feet in the center of the structural basin).

Ground water is associated with alluvial and fluvial sandstone aquifers. Thus, the occurrence of ground water is mainly controlled by the distribution of sandstone in the formation. The distribution of such sandstone is the result of original depositional extent plus any post-depositional modifications, namely erosion and structural deformation. Transmissivity data for San Jose Formation are minimal. Values of 40 and 120 feet squared per day were determined from two aquifer tests (Stone et al, 1983, table 5). The reported or measured discharge from 46 water wells completed in San Jose Formation ranges from 0.15 to 61 gallons per minute and the median is 5 gallons per minute. Most of the wells provide water for livestock and domestic use.

The San Jose Formation is a very suitable unit for recharge from precipitation because soils that form on the unit are sandy and highly permeable and therefore readily adsorb precipitation. However, low annual precipitation, relatively high transpiration and evaporation rates, and deep dissection of the San Jose Formation by the San Juan River and its tributaries all tend to reduce the effective recharge to the unit.

Stone et al., 1983, Hydrogeology and Water Resources of the San Juan Basin, New Mexico: Socorro, New Mexico Bureau of Mines and Mineral Resources Hydrologic Report 6, 70 p.

Tafoya, Crystal

From: Tafoya, Crystal
Sent: Thursday, July 10, 2008 8:16 AM
To: 'mark_kelly@nm.blm.gov'
Subject: OCD Pit Closure Notification

The following temporary pits will be closed on-site. The new OCD Pit Rule 17 requires the surface owner be notified. Please feel free to contact me at any time if you have any questions. Thank you!

Allison Unit 2B
Allison Unit 40N
Angel Peak B 27E
Ballard 11F
Cain 725S
Canyon Largo Unit 250N
Canyon Largo Unit 279E
Canyon Largo Unit 288E
Canyon largo Unit 297E
Canyon Largo Unit 465E
Carson SRC 4E
Day B 4P
Day B 5A
East 17S
EPNG A 1B
EPNG B 1M
Federal A 1E
Filan 5M
Filan 5N
Fogelson 4 100
Fogelson 4 100S
Grambling C 202S
Hagood 19
Hamner 9S
Hardie 4P
Hare 295
Heaton Com 100
Helms Federal 1G
Howell 12
Huerfanito Unit 103F
Huerfanito Unit 29S
Huerfanito Unit 39S
Huerfanito Unit 47S
Huerfanito Unit 50E
Huerfanito Unit 75E
Huerfanito Unit 83E
Huerfanito Unit 87E
Huerfanito Unit 90E
Huerfanito Unit 90M
Huerfanito Unit 98S
Huerfano Unit 108F
Huerfano Unit 282E
Huerfano unit 305
Huerfano unit 307
Huerfano Unit 554
Johnston Federal 24S

San Juan 28-6 Unit 459S
San Juan 28-7 Unit 151E
San Juan 28-7 Unit 195P
San Juan 29-6 Unit 22N
San Juan 29-6 Unit 8M
San Juan 29-7 Unit 30N
San Juan 29-7 Unit 57E
San Juan 29-7 unit 587
San Juan 29-7 Unit 588
~~San Juan 29-7 unit 589~~
San Juan 29-7 Unit 60N
San Juan 29-7 unit 67M
San Juan 29-7 Unit 70M
San Juan 30-5 Unit 27F
San Juan 30-5 Unit 71F
San Juan 30-5 Unit 73N
San Juan 30-6 Unit 441S
San Juan 31-6 Unit 24F
San Juan 31-6 Unit 27M
San Juan 31-6 Unit 31P
San Juan 31-6 Unit 39M
San Juan 31-6 Unit 3M
San Juan 31-6 Unit 45N
San Juan 31-6 Unit 49P
San Juan 31-6 Unit 4N
San Juan 31-6 Unit 4P
San Juan 31-6 Unit 6F
San Juan 31-6 Unit 7M
San Juan 31-6 Unit 8N
San Juan 32-7 Unit 18M
San Juan 32-7 Unit 19A
San Juan 32-7 Unit 71A
San Juan 32-7 Unit Com 20
San Juan 32-8 Unit 18N
San Juan 32-8 Unit 30M
San Juan 32-8 Unit 49M
Storey B LS 100
Storey B LS 100S
Sunray E 221S
Sunray G 2C
Vaughn 15N
Wood 3M
Wood 3N

Crystal L. Tafoya
Regulatory Technician
ConocoPhillips Company
San Juan Business Unit
Phone: (505) 326-9837
Email: Crystal.Tafoya@conocophillips.com

DISTRICT I
1625 N. French Dr., Hobbs, N.M. 88240

DISTRICT II
1301 W. Grand Avenue, Artesia, N.M. 88210

DISTRICT III
1000 Rio Brazos Rd., Asteo, N.M. 87410

DISTRICT IV
1220 S. St. Francis Dr., Santa Fe, NM 87505

State of New Mexico
Energy, Minerals & Natural Resources Department

RECEIVED

Form C-102
Revised October 12, 2005

OIL CONSERVATION DIVISION

1220 South St. Francis Dr.
Santa Fe, NM 87505

Submit to Appropriate District Office
State Lease - 4 Copies
Fee Lease - 3 Copies

Bureau of Land Management
Farmington Field Office

AMENDED REPORT

WELL LOCATION AND ACREAGE DEDICATION PLAT

⁴ API Number 30-039-30403		⁵ Pool Code 71629/72359		⁶ Pool Name BASIN FRUITLAND COAL/BLANCO PICTURED CLIFFS	
⁷ Property Code 7465		⁸ Property Name SAN JUAN 29-7 UNIT			⁹ Well Number 589
¹⁰ GRID No. 14538		¹¹ Operator Name BURLINGTON RESOURCES OIL AND GAS COMPANY LP			¹² Elevation 6792'

¹⁰ Surface Location

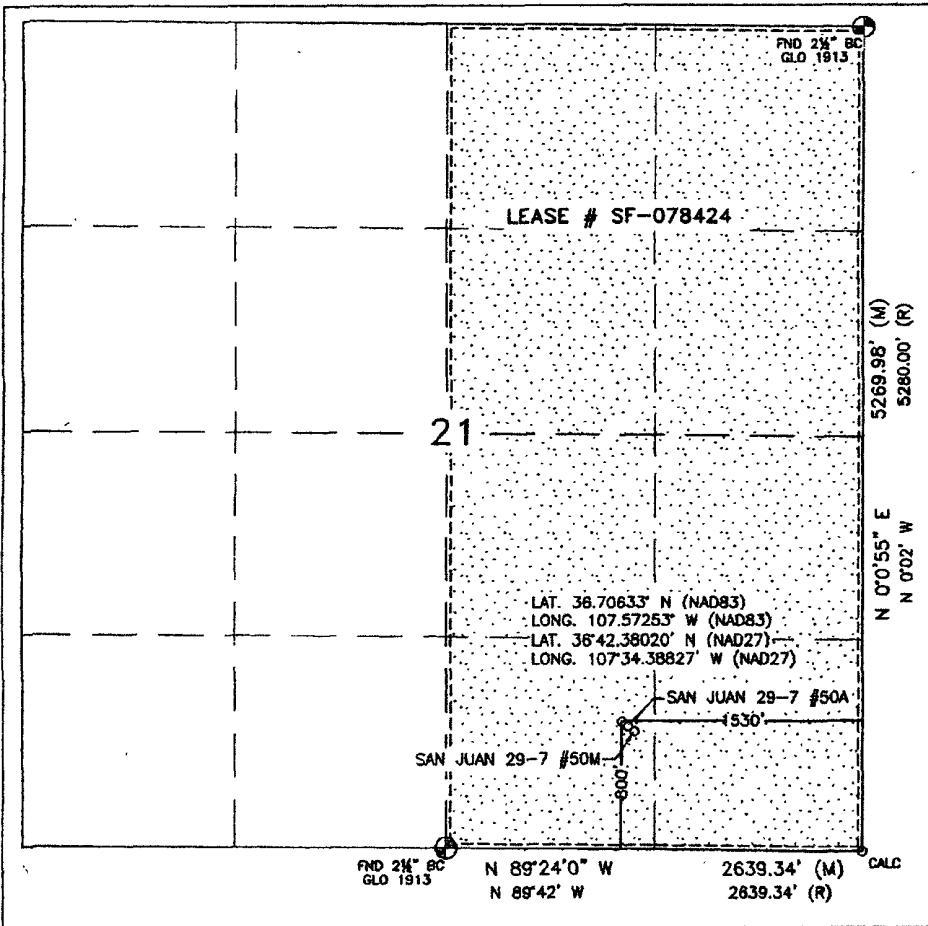
UL or lot no.	Section	Township	Range	Lot Idn	Feet from the	North/South line	Feet from the	East/West line	County
0	21	29N	7W		800'	SOUTH	1530'	EAST	RIO ARRIBA

¹¹ Bottom Hole Location If Different From Surface

UL or lot no.	Section	Township	Range	Lot Idn	Feet from the	North/South line	Feet from the	East/West line	County
0									
¹³ Dedicated Acres FC 320 E/2 PC 160 SE/4			¹⁴ Joint or Infill		¹⁵ Consolidation Code		¹⁶ Order No.		

NO ALLOWABLE WILL BE ASSIGNED TO THIS COMPLETION UNTIL ALL INTERESTS HAVE BEEN CONSOLIDATED OR A NON-STANDARD UNIT HAS BEEN APPROVED BY THE DIVISION

16



17 OPERATOR CERTIFICATION

I hereby certify that the information contained herein is true and complete to the best of my knowledge and belief, and that this organization either owns a working interest or unleased mineral interest in the land including the proposed bottom hole location or has a right to drill this well at this location pursuant to a contract with an owner or a compulsory pooling order heretofore entered by the division.

Rhonda Rogers 8-22-07
Signature Date

Rhonda Rogers
Printed Name

18 SURVEYOR CERTIFICATION

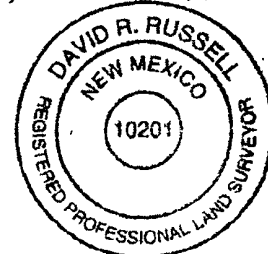
I hereby certify that the well location shown on this plat was plotted from field notes of actual surveys made by me or under my supervision, and that the same is true and correct to the best of my belief.

JULY 23, 2007

Date of Survey

Signature and Seal of Professional Surveyor:

David R. Russell



DAVID RUSSELL

Certificate Number 10201

Burlington Resources Oil & Gas Company, LP San Juan Basin Closure Plan

In accordance with Rule 19.15.17.12 NMAC the following information describes the closure requirements of temporary pits on Burlington Resources Oil & Gas Company, LP (BR) locations. This is BR's standard procedure for all temporary pits. A separate plan will be submitted for any temporary pit which does not conform to this plan.

All closure activities will include proper documentation and be available for review upon request and will be submitted to OCD within 60 days of closure of pit closure. Closure report will be filed on C-144 and incorporate the following:

- Details on Capping and Covering, where applicable.
- Plot Plan (Pit Diagram)
- Inspection Reports
- Sampling Results
- C-105
- Copy of Deed Notice will be filed with County Clerk

General Plan:

1. All free standing liquids will be removed at the start of the pit closure process from the pit and disposed of in a division-approved facility or recycle, reuse or reclaim the liquids in a manner that the appropriate division district office approves. The facilities to be used will be Basin Disposal (Permit #NM-01-005) and Envirotech Land Farm (Permit #NM-01-011).
2. The preferred method of closure for all temporary pits will be on-site burial, assuming that all the criteria listed in sub-section (B) of 19.15.17.13 are met.
3. The surface owner shall be notified of BR's closing of the temporary pit prior to closure as per the approved closure plan via certified mail, return receipt requested.
4. Within 6 months of the Rig Off status occurring BR will ensure that temporary pits are closed, re-contoured, and reseeded.
5. Notice of Closure will be given prior to closure to the Aztec Division office between 72 hours and one week via email, or verbally. The notification of closure will include the following:
 - i. Operator's name
 - ii. Location by Unit Letter, Section, Township, and Range. Well name and API number.
6. Liner of temporary pit shall be removed above "mud level" after stabilization. Removal of liner will consist of manually or mechanically cutting liner at mud level and removing all remaining liner. Care will be taken to remove "All" of the liner i.e., edges of liner entrenched or buried. All excessive liner will be disposed of at the San Juan County Landfill located on CR 3100.
7. Pit contents shall be mixed with non-waste containing, earthen material in order to achieve the solidification process. The solidification process will be accomplished using a combination of natural drying and mechanically mixing. Pit contents will be mixed with non-waste, earthen material to a consistency that is deemed a safe and stable. The mixing ratio shall not exceed 3 parts clean soil to 1 part pit contents.
8. A five point composite sample will be taken of the pit using sampling tools and all samples tested per Subsection B of 19.15.17.13(B)(1)(b). In the event that the criteria are not met, all contents will be handled per Subparagraph (a) of Paragraph (1) of Subsection B of 19.15.17.13 i.e., Dig and haul.

Components	Tests Method	Limit (mg/Kg)
Benzene	EPA SW-846 8021B or 8260B	0.2
BTEX	EPA SW-846 8021B or 8260B	50
TPH	EPA SW-846 418.1	2500
GRO/DRO	EPA SW-846 8015M	500
Chlorides	EPA 300.1	1000/500

9. Upon completion of solidification and testing standards being passed, the pit area will be backfilled with compacted, non-waste containing, earthen material. A minimum of four feet of cover shall be achieved and the cover shall include one foot of suitable material to establish vegetation at the site, or the background thickness of topsoil, whichever is greater. If standard testing fails BR will dig and haul all contents pursuant to 19.15.17.13.i.a. After doing such, confirmation sampling will be conducted to ensure a release has not occurred.
10. During the stabilization process if the liner is ripped by equipment the Aztec OCD office will be notified within 48 hours and the liner will be repaired if possible. If the liner can not be repaired then all contents will be excavated and removed.
11. Dig and Haul Material will be transported to the Envirotech Land Farm located 16 miles south of Bloomfield on Angel Peak Road, CR 7175. Permit # NM010011
12. Re-contouring of location will match fit, shape, line, form and texture of the surrounding. Re-shaping will include drainage control, prevent ponding, and prevent erosion. Natural drainages will be unimpeded and water bars and/or silt traps will be place in areas where needed to prevent erosion on a large scale. Final re-contour shall have a uniform appearance with smooth surface, fitting the natural landscape.
13. Notification will be sent to OCD when the reclaimed area is seeded.
14. BR shall seed the disturbed areas the first growing season after the operator closes the pit. Seeding will be accomplished via drilling on the contour whenever practical or by other division-approved methods. BLM stipulated seed mixes will used on federal lands. Vegetative cover will equal 70% of the native perennial vegetative cover (un-impacted) consisting of at least three native plant species, including at least one grass, but not including noxious weeds, and maintain that cover through two successive growing seasons. Repeat seeding or planting will be continued until successful vegetative growth occurs.

Type	Variety or Cultivator	PLS/A
Western wheatgrass	Arriba	3.0
Indian ricegrass	Paloma or Rimrock	3.0
Slender wheatgrass	San Luis	2.0
Crested wheatgrass	Hy-crest	3.0
Bottlebrush Squirreltail	Unknown	2.0
Four-wing Saltbrush	Delar	.25

Species shall be planted in pounds of pure live seed per acre:

Present Pure Live Seed (PLS) = Purity X Germination/100

Two lots of seed can be compared on the basis of PLS as follows:

Source No. One (poor quality)	Source No. two (better quality)
Purity 50 percent	Purity 80 percent
Germination 40 percent	Germination 63 percent
Percent PLS 20 percent	Percent PLS 50 percent

**5 lb. bulk seed required to make
1 lb. PLS**

**2 lb. bulk seed required to make
1 lb. PLS**

15. The temporary pit will be located with a steel marker, no less than four inches in diameter, cemented in a hole three feet deep in the center of the onsite burial upon the abandonment of all the wells on the pad. The marker will be flush with the ground to allow access of the active well pad and for safety concerns. The marker will include a threaded collar to be used for future abandonment. The top of the marker will contain a welded steel 12" square plate that indicates the onsite burial of the temporary pit. The plate will be easily removable and a four foot tall riser will be threaded into the top of the collar marker and welded around the base with the operator's information at the time of all wells on the pad are abandoned. The operator's information will include the following: Operator Name, Lease Name, Well Name and number, Unit Number, Section, Township, Range and an indicator that the marker is an onsite burial location.