

submitted in lieu of Form 3160-5

UNITED STATES
DEPARTMENT OF THE INTERIOR
BUREAU OF LAND MANAGEMENT

RCVD NOV 4 '08
OIL CONS. DIV.
DIST. 3

Sundry Notices and Reports on Wells

- | | |
|--|---|
| 1. Type of Well
GAS | 5. Lease Number
SF-080133 |
| 2. Name of Operator
BURLINGTON
RESOURCES OIL & GAS COMPANY LP | 6. If Indian, All. or Tribe Name |
| 3. Address & Phone No. of Operator

PO Box 4289, Farmington, NM 87499 (505) 326-9700 | 7. Unit Agreement Name
San Juan 32-9 Unit |
| 4. Location of Well, Footage, Sec., T, R, M

Unit G (SWNE), 1560' FNL & 1600' FEL, Section 10, T31N, R09W, NMPM | 8. Well Name & Number
San Juan 32-9 Unit 35 |
| | 9. API Well No.

30-045-10929 |
| | 10. Field and Pool
Blanco Mesaverde |
| | 11. County and State
San Juan Co., NM |

12. CHECK APPROPRIATE BOX TO INDICATE NATURE OF NOTICE, REPORT, OTHER DATA

Type of Submission	Type of Action
<input type="checkbox"/> Notice of Intent	<input type="checkbox"/> Abandonment <input type="checkbox"/> Change of Plans <input checked="" type="checkbox"/> Other - MIT, Squeeze
<input checked="" type="checkbox"/> Subsequent Report	<input type="checkbox"/> Recompletion <input type="checkbox"/> New Construction
<input type="checkbox"/> Final Abandonment	<input type="checkbox"/> Plugging <input type="checkbox"/> Non-Routine Fracturing
	<input type="checkbox"/> Casing Repair <input type="checkbox"/> Water Shut off
	<input type="checkbox"/> Altering Casing <input type="checkbox"/> Conversion to Injection

13. Describe Proposed or Completed Operations

8/21/08 MIRU AWS 560. 8/22/08 RU CO-Rod BOP & unit, POOH w/co-rod & pump. RD CO-rod. 8/25/08 ND WH, NU BOP. PT BOP-good. Tag fill @ 5954', PBTD 6100'. TOOH w/2 1/16" tbg, scale 1500' to bottom. RIH w/bit & string mill to 5800'. 8/26/08 TOH/LD bit & mill. Run RBP & pkr, isolate 2 leaks: 5257'-5557' on 5 1/2" liner & 1429'-1725' on 7" csg. See sundry dated 8/29/08 for details & verbal approvals. RBP @ 5257'. 8/29/08 Release RBP & set @ 5587'. PT RBP-good. Dump 10' sand on top RBP. RU Blue Jet & run inspection logs f/5030' t/50'. RD Blue Jet. 9/2/08 Set pkr @ 5147' & squeeze holes f/5257' t/5557'. Pumped 10bbbls FW ahead of 175sx (332cf-59bbbls) Class G cmt w/3#ps gilsonite. Displaced w/22bbbls FW. WOC. 9/3/08 Load tbg w/2bbbls 2% KCL & PT sqz to 500psi. Lost 40psi in 5mins. Release pkr & LD. Tag cmt @ 5257'. Spot 3bbbls Type III cmt across holes 5257'-5557'. Displaced w/19bbbls FW. Set pkr @ 2019', load tbg w/3bbbls 2% KCL & PT sqz to 500psi, lost 25psi in 10mins. Pressure back up to 500psi & SI tbg.

9/4/08 Release pressure. PT to 500psi for 30mins-good. Release pkr & LD. TIH w/7" RBP & set @ 1826'. PT RBP w/pkr to 500psi-good. Release pkr. Dump 11' sand on RBP. Squeeze holes f/1429'-1725'. Pumped 8bbbls FW ahead of 40bbbls Class G cmt, displaced w/30bbbls FW. 9/5/08 Set balance plug, tag cmt @ 1584'. Pumped 7bbbls FW ahead 8bbbls cmt, displaced w/4bbbls FW. Set 7" pkr @ 1222', pump 2bbbls FW into sqz, pressure up to 500psi & SI tbg. WOC. 9/8/08 Pump 2bbbls 2%KCL down tbg, PT tbg to 500psi, lost 100psi in 15mins. Release pkr & LD. Tag cmt @ 1439'. Set balance plug, pumped 6bbbls FW ahead 5bbbls Type III cmt, displaced w/5bbbls FW. Load csg w/3bbbls FW, PT to 500psi, pres fell to 470psi in 15mins.

Cont on next page.....

14. I hereby certify that the foregoing is true and correct.

Signed Tamra Sessions Tamra Sessions Title Staff Regulatory Technician Date 10/28/2008

ACCEPTED FOR RECORD

(This space for Federal or State Office use)

APPROVED BY _____ Title _____ Date OCT 31 2008

CONDITION OF APPROVAL, if any:

Title 18 U.S.C. Section 1001, makes it a crime for any person knowingly and willfully to make any department or agency of the United States any false, fictitious or fraudulent statements or representations as to any matter within its jurisdiction.

NMOC

FARMINGTON FIELD OFFICE

SAN JUAN 32-9 UNIT 35

API 30-045-10929

9/9/08 PT csg to 500psi for 30mins-good. RIH w/bit, tag cmt @ 1337'. DO cmt f/1337' t/1729', circ hole clean. Load hole w/68bbls 2%KCL, PT to 500psi, lost 160psi in 5mins.

9/10/08 TOOH w/bit. Run 7" pkr, locate holes 1429'-1725'. PT to 500psi lost 160psi/5mins to lost 60psi/5mins. TOOH w/pkr & LD. **Would like to run 5 1/2" scab liner f/top of 5 1/2" liner to surface and cmt in. 7" csg is weak, additional sqz or PT could cause more leaks. 9/10/08 Per Troy Salyers/BLM & Kelly Roberts/OCD will need to run CBL log to find top of cmt behind 7" csg.** 9/11/08 Release RBP @ 1826' & LD. RU Blue Jet & run CBL log f/3900' to surface. RD Blue Jet. CBL emailed to Troy Salyers/BLM & Charlie Perrin/OCD for review. Stringers to surface csg, 9 5/8" shoe @ 174'. **9/11/08 Received verbal approval for no additional squeeze work and to run 5 1/2" scab liner to keep 7" csg integrity, from Troy Salyers/BLM & Charlie Perrin/OCD.**

9/12/08 RIH w/RBP & set @ 1035'. PT RBP to 500psi-good. 9/15/08 Weld stick up on 7" csg. Release RBP @ 1035' & LD. 9/16/08 RIH w/bit, tag cmt @ 5147'. DO cmt f/5147' t/5268'. Circ hole clean. 9/17/08 Cont CO cmt to 5334', lost circ. Est circ w/air and mist, cont DO cmt to 5521'. Circ hole clean. 9/18/08 TOOH w/bit & LD. Set pkr @ 5503', pump 8bbls 2% KCL down tbg, load hole, pres up to 500psi. Went to 0 in 15sec. Release pkr & LD. TIH w/bit & mill string, tag up @ 5515'. Unload 110bbls 2%KCL, CO to 5572'. 9/19/08 Tag up @ 5316', unload 80bbls, CO to 5572'.

9/19/08 Received verbal approval to re-squeeze the 5 1/2" liner from Wayne Townsend/BLM & Kelly Roberts/OCD.

9/22/08 TOOH w/bit & string mill, LD. Set pkr @ 5046'. Squeeze w/5bbls FW ahead of 75bbls premium Class G cmt, displaced w/22 bbls FW. WOC. 9/23/08 Release pkr & LD. DO cmt f/5182' t/5534'. Circ hole clean on 9/25/08.

9/26/08 Run pkr & RBP & located holes in 5 1/2" liner f/5248' t/5534'. **9/30/08 Received verbal approval from Wayne Townsend/BLM & Charlie Perrin/OCD to use 300PSI Chemical to squeeze across holes in 5 1/2" liner. We must run MIT in 12 months.**

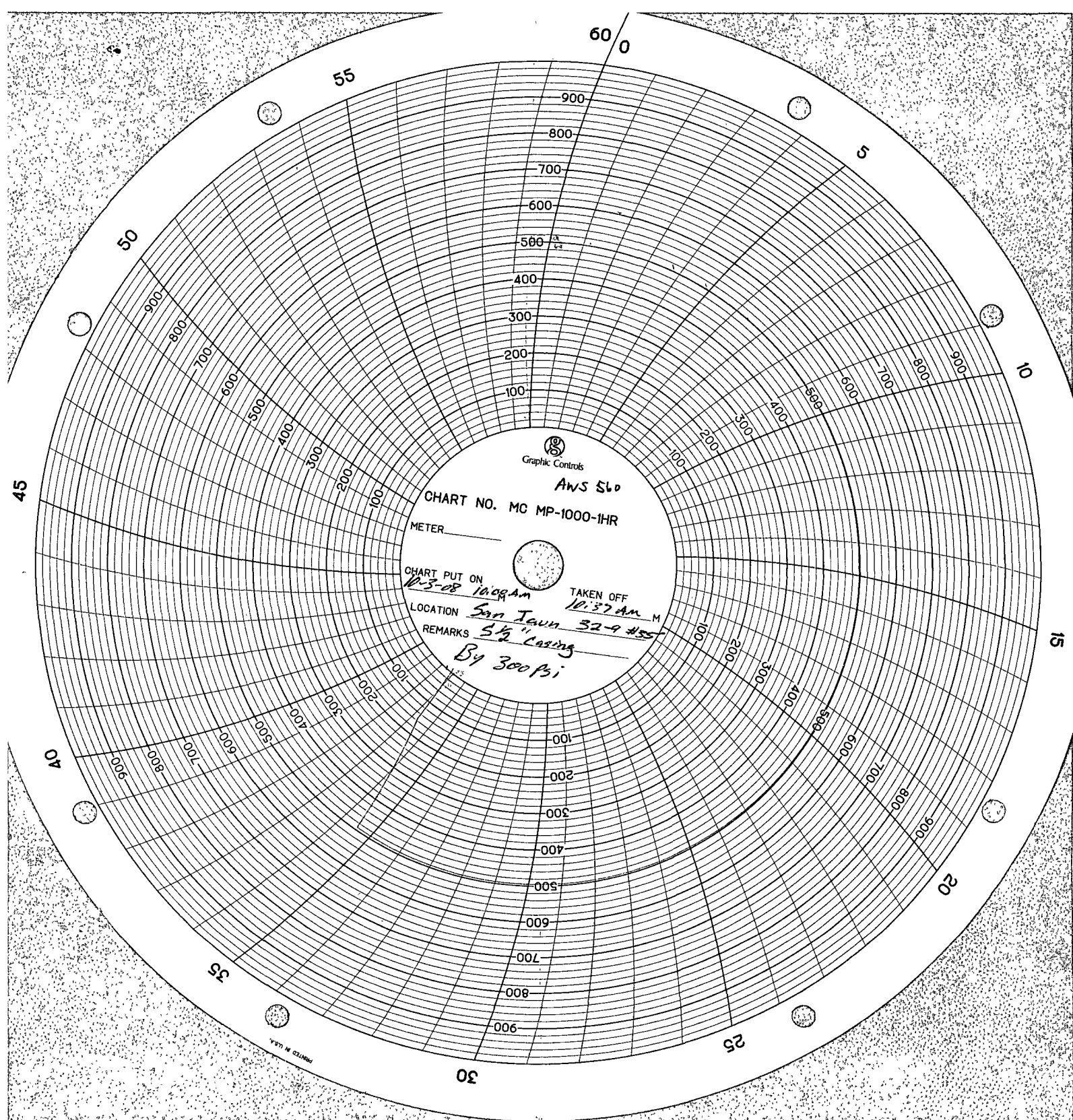
10/2/08 RU 300psi truck. TIH to 5534'. Pump 19bbls 300PSI down tubing followed w/13bbls 2% KCL. TUH to 5046', set pkr. RD 300psi. Load tbg w/1/4bbl 2%KCL, pressure up to 500#, lost 60psi in 10min. Pressure up to 500# w/N2 & SI.

10/3/08 PT to 500psi for 37mins on chart, lost 5 psi. Release pkr & LD. Unload hole & CO to 5587'. Release RBP & LD.

10/6/08 RIH w/116jts 5 1/2" 17# J-55 Liner & set @ 4998'. 10/8/08 Cement in liner w/Preflush 5bbls FW, 20bbl Chem wash & 10bbls FW. Followed w/60bbls Poz Premium cmt. Drop plug. Displaced w/115bbls water. Bumped plug. Lost circ, no cmt to surface.

10/9/08 RU Blue Jet, run CBL f/4939' t/3900'. No cmt behind 5 1/2" csg. RIH w/bit, DO float collar @ 4944', tag cmt @ 4986'. DO Cmt to 4993', circ hole clean to 5364'. Cement fell to bottom of hole. **Decision made to LD 5 1/2" csg & make plans to P&A well.**

10/10 to 10/14/08 Pull 5 1/2" liner out of hole & LD. 10/14/08 RIH w/162jts 2 3/8" 4.7# J-55 tbg & land @ 5340'. ND BOP, NU WH. RD RR @ 16:00hr on 10/15/08



RCVD NOV 4 1908
OIL CONS. DIV.
DIST. 3