

District I

1625 N. French Dr., Hobbs, NM 88240

District II

1301 W. Grand Avenue, Artesia, NM 88210

District III

1000 Rio Brazos Road, Aztec, NM 87410

District IV

1220 S. St. Francis Dr., Santa Fe, NM 87505

State of New Mexico
Energy Minerals and Natural ResourcesOil Conservation Division
1220 South St. Francis Dr.
Santa Fe, NM 87505Form C-101
Revised June 10, 2003Submit to appropriate District Office
State Lease - 6 Copies
Fee Lease - 5 Copies☐ AMENDED REPORT**APPLICATION FOR PERMIT TO DRILL, RE-ENTER, DEEPEN, PLUGBACK, OR ADD A ZONE**

¹ Operator Name and Address Four Oil and Gas Company 11111 S. Wilcrest Houston, Texas 77099		² OGRID Number 131994
³ Property Code 17729	⁴ Property Name Wayne Moore Com	⁵ API Number 30 -045- 31993
		⁶ Well No. 2S

7 Surface Location

UL or lot no.	Section	Township	Range	Lot Idn	Feet from the	North/South line	Feet from the	East/West line	County
I	16	31N	9W		1975	South	1095	East	San Juan

8 Proposed Bottom Hole Location If Different From Surface

UL or lot no.	Section	Township	Range	Lot Idn	Feet from the	North/South line	Feet from the	East/West line	County

9 Proposed Pool 1

Basin Fruitland Coal

10 Proposed Pool 2

¹¹ Work Type Code N	¹² Well Type Code G	¹³ Cable/Rotary R	¹⁴ Lease Type Code S	¹⁵ Ground Level Elevation 6489' GR
¹⁶ Multiple No	¹⁷ Proposed Depth 3500'	¹⁸ Formation Fruitland Coal	¹⁹ Contractor	²⁰ Spud Date 12/01/03

21 Proposed Casing and Cement Program

Hole Size	Casing Size	Casing weight/foot	Setting Depth	Sacks of Cement	Estimated TOC
12-1/4"	8-5/8"	24#	350'	259	Surface
7-7/8"	5-1/2"	17#	3500'	355	Surface

22 Describe the proposed program. If this application is to DEEPEN or PLUG BACK, give the data on the present productive zone and proposed new productive zone.

Describe the blowout prevention program, if any. Use additional sheets if necessary.

Four Star Oil and Gas Company proposes to drill the Wayne Moore Com #2S as a development well to test the Fruitland Coal formation. If the well is capable of commercial production it will be completed. If the well is non-productive it will be plugged and abandoned.

Archaeological and threatened and endangered species surveys were conducted for both this location and the access.

See attached diagram for BOP equipment.

23 I hereby certify that the information given above is true and complete to the best of my knowledge and belief.Signature: *Kenneth W. Jackson*

Printed name: Kenneth W. Jackson

Title: Regulatory Specialist

E-mail Address: kewj@chevrontexaco.com

Date: 11/10/03

Phone: (281) 561-4991

OIL CONSERVATION DIVISIONApproved by: *[Signature]*

Title:

DEPUTY OIL & GAS INSPECTOR, DIST. 43

Approval Date:

NOV 12 2003

Expiration Date:

NOV 12 2004

Conditions of Approval:

Attached ☐

District I
PO Box 1980, Hobbs, NM 88241-1980

District II
PO Drawer DD, Artesia, NM 88211-0719

District III
1000 Rio Brazos Rd., Aztec, NM 87410

District IV
PO Box 2088, Santa Fe, NM 87504-2088

State of New Mexico
Energy, Minerals & Natural Resources Department

OIL CONSERVATION DIVISION
PO Box 2088
Santa Fe, NM 87504-2088

Form C-102
Revised February 21, 1994
Instructions on back
Submit to Appropriate District Office
State Lease - 4 Copies
Fee Lease - 3 Copies

☐ AMENDED REPORT

WELL LOCATION AND ACREAGE DEDICATION PLAT

*API Number 30-045-31993		*Pool Code 71629	*Pool Name BASIN FRUITLAND COAL
*Property Code 17729	*Property Name WAYNE MOORE COM		*Well Number 2S
*GRID No. 131994	*Operator Name FOUR STAR OIL & GAS COMPANY		*Elevation 6489'

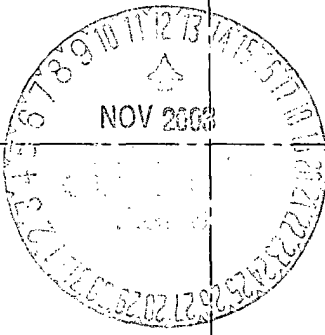

¹⁰ Surface Location

UL or lot no.	Section	Township	Range	Lot Idn	Feet from the	North/South line	Feet from the	East/West line	County
I	16	31N	9W		1975	SOUTH	1095	EAST	SAN JUAN

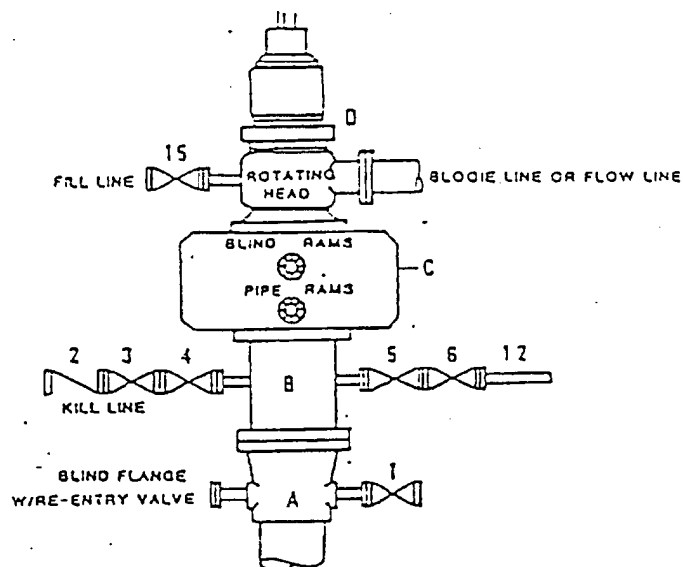
¹¹ Bottom Hole Location If Different From Surface

UL or lot no.	Section	Township	Range	Lot Idn	Feet from the	North/South line	Feet from the	East/West line	County
¹² Dedicated Acres 320.0 Acres - (S/2)					¹³ Joint or Infill Y	¹⁴ Consolidation Code C	¹⁵ Order No.		

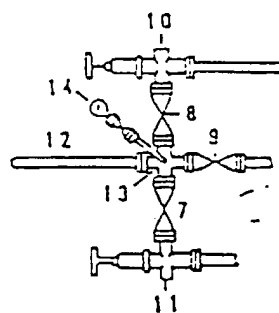
NO ALLOWABLE WILL BE ASSIGNED TO THIS COMPLETION UNTIL ALL INTERESTS HAVE BEEN CONSOLIDATED
OR A NON-STANDARD UNIT HAS BEEN APPROVED BY THE DIVISION

¹⁶ 2594.46'		2632.08'		
		¹⁷ OPERATOR CERTIFICATION I hereby certify that the information contained herein is true and complete to the best of my knowledge and belief <i>Kenneth W. Jackson</i> Signature Kenneth W. Jackson Printed Name Regulatory Specialist Title 11/10/2003 Date		
				¹⁸ SURVEYOR CERTIFICATION I hereby certify that the well location shown on this plat was plotted from field notes of actual surveys made by me or under my supervision, and that the same is true and correct to the best of my belief Survey Date: OCTOBER 21, 2003 Signature and Seal of Professional Surveyor  JASON C. EDWARDS Certificate Number 15269
5293.20'	E5382-1	16	B10938-50	5260.20'
			660'	1095'
	E1195-11		E5167-13	1975'
		5233.80'		

DRILLING CONTROL CONDITION II-B 3000WP



H₂S TRIM REQUIRED
YES _____ NO _____



DRILLING CONTROL

MATERIAL LIST - CONDITION II - B

- | | |
|----------------|---|
| A. | Wellhead |
| B. | 3000# W.P. drilling spool with a 2" minimum flanged outlet for kill line and 3" minimum flanged outlet for choke line. |
| C. | 3000# W.P. Dual ram type preventer, hydraulic operated with 1" steel
3000# W.P. control lines (where substructure height is adequate, 2 - 3000# W.P. single ram type preventer may be utilized). |
| D. | Rotating head with fill up outlet and extended blooe line. |
| 1,3,4,
7,8, | 2" minimum 3000# W.P. flanged full opening steel gate valve, or Halliburton Lo Torc Plug valve. |
| 2. | 2" minimum 3000# W.P. back pressure valve. |
| 5,6,9 | 3" minimum 3000# W.P. flanged full opening steel gate valve or Halliburton Lo Torc Plug valve. |
| 12. | 3" minimum schedule 80, Grade "B" seamless line pipe. |
| 13. | 2" minimum x 3" 3000# W.P. flanged cross. |
| 10, 11 | 2" minimum 3000# W.P. adjustable choke bodies. |
| 14 | Cameron Mud Gauge or equivalent (location optional in choke line) |
| 15. | 2" minimum 3000# W.P. flanged or threaded full opening steel gate valve, or Halliburton Lo Torc Plug valve. |