

District I
1625 N. French Dr., Hobbs, NM 88240
District II
1301 W. Grand Avenue, Artesia, NM 88210
District III
1000 Rio Brazos Road, Aztec, NM 87410
District IV
1220 S. St. Francis Dr., Santa Fe, NM 87505

State of New Mexico
Energy Minerals and Natural Resources

Form C-101
May 27, 2004

Oil Conservation Division
1220 South St. Francis Dr.
Santa Fe, NM 87505

Submit to appropriate District Office

☐ AMENDED REPORT

APPLICATION FOR PERMIT TO DRILL, RE-ENTER, DEEPEN, PLUGBACK, OR ADD A ZONE

Operator Name and Address Thompson Engineering and Production Corp. c/o Walsh Engineering & Prod. Corp. 7415 E. Main St., Farmington, NM 87402 (505) 327-4892		OGRID Number 037581
Property Code 20579	Property Name Thomas	API Number 30-045-53931
Proposed Pool 1 BASIN FRUITLAND COAL		Proposed Pool 2

Surface Location

UL or lot no. L	Section 30	Township 29N	Range 11W	Lot Idn 3	Feet from the 1960' 1960	North/South line SOUTH	Feet from the 104' 985	East/West line WEST	County SAN JUAN
--------------------	---------------	-----------------	--------------	--------------	-----------------------------	---------------------------	---------------------------	------------------------	--------------------

Proposed Bottom Hole Location If Different From Surface

UL or lot no.	Section	Township	Range	Lot Idn	Feet from the	North/South line	Feet from the	East/West line	County
---------------	---------	----------	-------	---------	---------------	------------------	---------------	----------------	--------

Additional Well Information

Work Type Code N	Well Type Code G	Cable/Rotary R	Lease Type Code P	Ground Level Elevation 5374'
Multiple N	Proposed Depth 1650'	Formation PICTURED CLIFFS	Contractor CHIHUAHUA	Spud Date SEPTEMBER 20, 2006
Depth to Groundwater Approx. 8'		Distance from nearest fresh water well >1000'		Distance from nearest surface water Approx. 100'
Pit: Liner: Synthetic <input checked="" type="checkbox"/> 12_mils thick Clay <input type="checkbox"/> Pit Volume: 1400_bbls Drilling Method: Closed-Loop System <input type="checkbox"/> Fresh Water <input checked="" type="checkbox"/> Brine <input type="checkbox"/> Diesel/Oil-based <input type="checkbox"/> Gas/Air <input type="checkbox"/>				

Proposed Casing and Cement Program

Hole Size	Casing Size	Casing weight/foot	Setting Depth	Sacks of Cement	Estimated TOC
8-3/4"	7"	20#	120'	50 sx	SURFACE
6-1/4"	4-1/2"	10.5#	1650'	125 sx & 75 sx	SURFACE

Describe the proposed program. If this application is to DEEPEN or PLUG BACK, give the data on the present productive zone and proposed new productive zone. Describe the blowout prevention program, if any. Use additional sheets if necessary.

Thompson Engineering and Production Corp. proposes to drill a vertical well at the above listed location and test the Fruitland Coal Formation. An 8-3/4" surface hole will be drilled to approx. 120' with spud mud. 7", 20# casing will be set and cemented to surface with 50 sx (59 cu. ft.) of Type 5 with 3% CaCl₂ and 1/4#/sk CF. A 2000# rated double ram or annular BOP will be installed and pressure tested to 600 psi. A 6-1/4" hole will be drilled using a fresh water - polymer mud system to approx. 1650'. 4-1/2", 10.5# casing will be set and cemented to surface with 125 sx (258 cu. ft.) of Type 5 with 2% SMS, 5 #/sk gilsonite and 1/4 #/sk CF followed by 75 sx (89 cu.ft.) of Type 5 with 5 #/sk gilsonite and 1/4 #/sk CF. Open hole DIL and FDC/CNL/GR/SP logs will be run. Deviation surveys will be run every 500'. The W/2 of Section 30 (315.2 acres) is dedicated to this well. Formation Tops: OA - 1243, Kirtland - 1296', FTC - 1400', PC - 1446'.

I hereby certify that the information given above is true and complete to the best of my knowledge and belief. I further certify that the drilling pit will be constructed according to NMOCD guidelines ☒, a general permit ☐, or an (attached) alternative OCD-approved plan ☐.

Printed name: PAUL C. THOMPSON

Title: PRESIDENT

E-mail Address: PAUL.C.WALSH@NM.EDU

Date: 9/8/06

Phone: 327-4892

OIL CONSERVATION DIVISION

Approved by:

Title: DEPUTY OIL & GAS INSPECTOR, DIST. #3

Approval Date: SEP 11 2006

Expiration Date: SEP 11 2007

Conditions of Approval Attached ☐ No subgrade pits or Tanks

District I
PO Box 1980, Hobbs, NM 88241-1980

District II
PO Drawer 00, Artesia, NM 88211-0719

District III
1000 Rio Brazos Rd., Aztec, NM 87410

District IV
PO Box 2088, Santa Fe, NM 87504-2088

State of New Mexico
Energy, Minerals & Natural Resources Department

OIL CONSERVATION DIVISION
PO Box 2088
Santa Fe, NM 87504-2088

Form C-102

Revised February 21, 1994

Instructions on back

Submit to Appropriate District Office

State Lease - 4 Copies

Fee Lease - 3 Copies

☐ AMENDED REPORT

WELL LOCATION AND ACREAGE DEDICATION PLAT

*API Number 30-042-33931	*Pool Code 71629	*Pool Name BASIN FRUITLAND COAL
*Property Code 20579	*Property Name THOMAS	*Well Number 100
*OGRID No 37581	*Operator Name THOMPSON ENGINEERING & PRODUCTION CORPORATION	*Elevation 5374

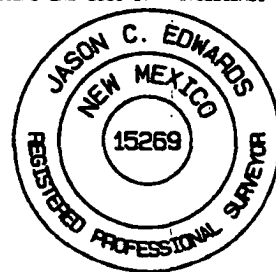
¹⁰ Surface Location

UL or lot no. L	Section 30	Township 29N	Range 11W	Lot Idn (3)	Feet from the 1980	North/South line SOUTH	Feet from the 985	East/West line WEST	County SAN JUAN
---------------------------	----------------------	------------------------	---------------------	-----------------------	------------------------------	----------------------------------	-----------------------------	-------------------------------	---------------------------

¹¹ Bottom Hole Location If Different From Surface

UL or lot no.	Section	Township	Range	Lot Idn	Feet from the	North/South line	Feet from the	East/West line	County
Dedicated Acres 315.20 Acres - W/2					Joint or Infill Y	Consolidation Code Com	Order No.		

NO ALLOWABLE WILL BE ASSIGNED TO THIS COMPLETION UNTIL ALL INTERESTS HAVE BEEN CONSOLIDATED
OR A NON-STANDARD UNIT HAS BEEN APPROVED BY THE DIVISION

<div><p>¹⁶</p><p>2568.72'</p><p>LOT 1</p><p>2635.38'</p><p>LOT 2</p><p>LOT 3</p><p>1045'</p><p>2608.98'</p><p>LOT 4</p><p>1285.02'</p><p>1960'</p><p>1311.09'</p><p>2622.18'</p><p>LAT: 36.69519°N LONG: 108.03814°W DATUM: NAD83</p></div>	<div><p>2618.88'</p><p>5346.00'</p><p>30</p></div>	<div><p>¹⁷ OPERATOR CERTIFICATION</p><p>I hereby certify that the information contained herein is true and complete to the best of my knowledge and belief.</p><p><i>Paul C. Thompson</i> Signature</p><p>Paul C. Thompson Printed Name</p><p>PRESIDENT Title</p><p>9/8/06 Date</p><p>¹⁸ SURVEYOR CERTIFICATION</p><p>I hereby certify that the well location shown on this plat was plotted from field notes of actual surveys made by me or under my supervision, and that the same is true and correct to the best of my belief.</p><p>Survey Date: SEPTEMBER 6, 2006</p><p>Signature and Seal of Professional Surveyor</p><div></div><p>Certificate Number 15269</p></div>
--	---	--

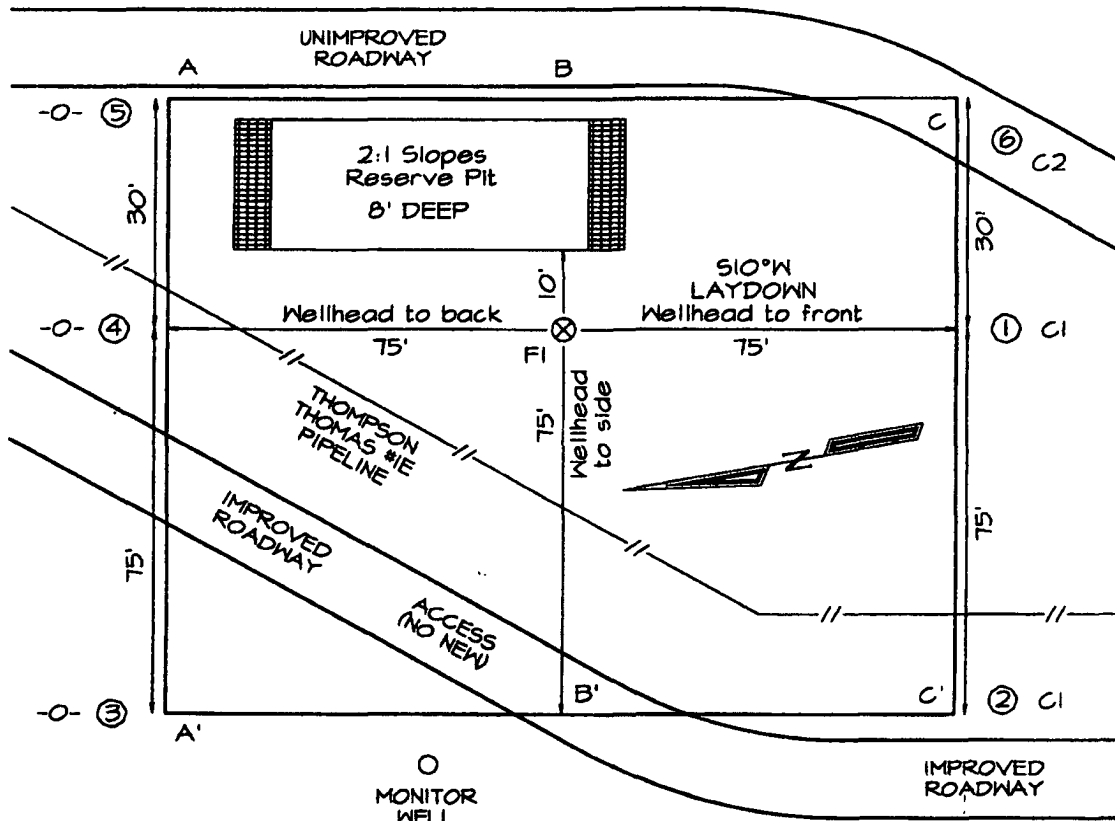
1980/S 985/W

THOMPSON ENGINEERING & PRODUCTION THOMAS #100
1966' FSL & 1045' FWL, SECTION 30, T29N, R11W, NMPM
SAN JUAN COUNTY, NEW MEXICO GROUND ELEVATION: 5374'

LATITUDE: 36.69519° N
LONGITUDE: 108.03814° W
 DATUM: NAD1983

PLAT NOTE:

*SURFACE OWNER:
 Clayton Investments



A-A'						
5385'						
5375'						
5365'						

B-B'						
5385'						
5375'						
5365'						

C-C'						
5385'						
5375'						
5365'						

Note: Contractor should call One-Call for location of any marked or unmarked buried pipelines or cables on well pad and/or access road at least two (2) working days prior to construction

1960' FSL & 1045' FWL, SECTION 30, T29N, R11W, N.M.P.M.
SAN JUAN COUNTY, NEW MEXICO

