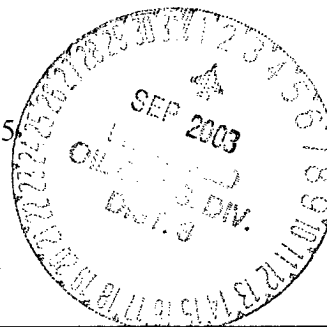


District I - (505) 393-6161
1625 N. French Dr, Hobbs, NM 88240
District II - (505) 748-1283
1301 W. Grand Avenue, Artesia, NM 88210
District III - (505) 334-6178
1000 Rio Brazos Road, Aztec, NM 87410
District IV - (505) 476-3440
1220 So. St. Francis Dr., Santa Fe, NM 87505

New Mexico
Energy Minerals and Natural Resources Department

Form C-140
Revised June 10, 2003

Oil Conservation Division
1220 South St. Francis Dr.
Santa Fe, New Mexico 87505
(505) 476-3440



SUBMIT ORIGINAL
PLUS 2 COPIES
TO APPROPRIATE
DISTRICT OFFICE

APPLICATION FOR
WELL WORKOVER PROJECT

I. Operator and Well

Operator name & address Four Star Oil and Gas Company 11111 S. Wilcrest Houston, Tx 77099							OGRID Number	
Contact Party Ken Jackson							Phone 281-561-4991	
Property Name New Mexico Com DY					Well Number 1		API Number 30-045-29402	
UL D	Section 36	Township 31N	Range 12W	Feet From The 805	North/South Line North	Feet From The 810	East/West Line West	County San Juan

II. Workover

Date Workover Commenced: 1/16/03	Previous Producing Pool(s) (Prior to Workover): Blanco-Mesa Verde
Date Workover Completed: 1/29/03	

III. Attach a description of the Workover Procedures performed to increase production.

IV. Attach a production decline curve or table showing at least twelve months of production prior to the workover and at least three months of production following the workover reflecting a positive production increase.

V. AFFIDAVIT:

State of Texas)
) ss.
County of Harris)
Mark Hinton, being first duly sworn, upon oath states:

- I am the Operator, or authorized representative of the Operator, of the above-referenced Well.
- I have made, or caused to be made, a diligent search of the production records reasonably available for this Well.
- To the best of my knowledge, this application and the data used to prepare the production curve and/or table for this Well are complete and accurate.

Signature Mark P. Hinton Title Technical Team Leader Date 8/20/2003

E-mail Address MPHI@chevrontexaco.com

SUBSCRIBED AND SWORN to before me this 28th day of August, 2003

My Commission expires: September 21, 2004

Notary Public
State of Texas
My Commission Expires
September 21, 2004

Lori L. Gettel

FOR OIL CONSERVATION DIVISION USE ONLY:

VI. CERTIFICATION OF APPROVAL:

This Application is hereby approved and the above-referenced well is designated a Well Workover Project and the Division hereby verifies the data shows a positive production increase. By copy hereof, the Division notifies the Secretary of the Taxation and Revenue Department of this Approval and certifies that this Well Workover Project was completed on

1/29, 2003

Signature District Supervisor <u>[Signature]</u>	OCD District <u>3</u>	Date <u>12/6/03</u>
---	--------------------------	------------------------

VII. DATE OF NOTIFICATION TO THE SECRETARY OF THE TAXATION AND REVENUE DEPARTMENT:

1/16/03

MIRU KEY RIG #39, AND MOUNTAIN AIR DRILLING SERVICES. WELL FLOWING 120 MCF @ 40# THIS AM. BLED DOWN. ND WELLHEAD. NU BOP W/ 6" BLOOIE LINE. RIH AND TAG FILL @ 4784'. PUIC. SION. D-\$4000, T-\$4000, DAY-1.

1/17/03

160# ON WELL THIS AM. RIH AND TAG FILL @ 4784'. BREAK CIRCULATION W/ AIR AND CLEAN OUT SAND TO P.B.T.D.(5055'). SMALL AMOUNT OF GAS AND WATER W/ NO SAND. TOOH. PU 4-1/2" CASING SCRAPER AND TIH W/ 2-3/8" EUE J-55 TBG. TO P.B.T.D.(5055'). TOOH AND LD CASING SCRAPER. SION. D-\$4500, T-\$8500, DAY-2.

1/18/03

160# ON WELL THIS AM. RIG DAY OFF.

1/19/03

160# ON WELL THIS AM. RIG DAY OFF.

1/20/03

160# ON WELL THIS AM. BLED DOWN. RU BLUE JET WIRELINE SERVICES. RIH W/ BLUE JET 40 ARM CALIPER / MIT TOOL AND LOG FROM P.B.T.D.(5055') TO SURFACE. CASING LOOKS GOOD. RD BLUE JET WIRELINE SERVICES. SION. D-\$7500, T-\$16,000, DAY-3.

1/21/03

160# ON WELL THIS AM. BLED DOWN. RU SCHLUMBERGER WIRELINE SERVICES. PERFORATE POINT LOOKOUT MESA VERDE W/ 2 SPF USING 3-1/8", 0.41 DIAMETER HOLE GUNS CONTAINING PROSPECTOR CHARGES AS FOLLOWS: 4961'-4966', 4950'-4957', 4932'-4937', 4924'-4926', 4894'-4908', 4870'-4888', 4848'-4852', 4834'-4837', 4825'-4832', 4814'-4818', 4790'-4798', 4779'-4785', 4764'-4770', 4758'-4762', 4736'-4753', 4714'-4730', (126'). RD SCHLUMBERGER WIRELINE SERVICES. EXSISTING PERFORATION ARE AS FOLLOWS: 4693'-4713'. SION. D-\$10,000, T-\$26,000, DAY-4.

1/22/03

160# ON WELL THIS AM. RU PROTECHNICS. RU HALLIBURTON. PUMP 1000 GALLONS 15% HCL ACID. FOAMED SLICK WATER FRAC @ 60.2 BPM W/ AN AVG. WHTP OF 2106 PSI., AND A MAX. WHTP OF 2468 PSI. W/ 187,725 GALLONS WATER, 1,755,000 SCF NITROGEN, AND 185,000# 16/30 BRADY SAND. ISIP - 788 PSI., 5 MINUTES - 467 PSI., 10 MINUTES - 336 PSI., 15 MINUTES - 262 PSI. TOTAL LOAD TO RECOVER IS 1763 BBLs. RD HALLIBURTON. RD PROTECHNICS. RU SCHLUMBERGER WIRELINE SERVICES. RIH W/ 4-1/2" COMPOSITE BRIDGE PLUG AND SET @ 4650'. PERFORATE MENELEE MESA VERDE W/ 2 SPF USING 3-1/8", 0.41 DIAMETER HOLE GUNS CONTAINING PROSPECTOR CHARGES AS FOLLOWS: 4593'-4608', 4534'-4553', 4508'-4512', 4499'-4503', 4450'-4468', 4384'-4394', 4372'-4379', 4362'-4368', (83'). RD SCHLUMBERGER WIRELINE SERVICES. RU PROTECHNICS. RU HALLIBURTON. PUMP 1000 GALLONS 15% HCL ACID. FOAMED SLICK WATER FRAC @ 59 BPM W/ AN AVG. WHTP OF 2039 PSI., AND A MAX. WHTP OF 3141 PSI. W/ 114,549 GALLONS WATER, 1,440,000 SCF NITROGEN, AND 125,000# 16/30 BRADY SAND. ISIP - 2039 PSI., 5 MINUTES - 1981 PSI., 10 MINUTES - 1966 PSI., 15 MINUTES - 1958 PSI. TOTAL LOAD TO RECOVER IS 1216 BBLs. RD HALLIBURTON. RD PROTECHNICS. LEFT WELL FLOWING THRU 1/2" CHOKE UNTIL WELL LOG OFF. SDFN. D-\$132,000, T-\$158,000, DAY-5.

1/23/03

100# ON WELL THIS AM. PU 3-7/8" BIT, BIT SUB, AND 2-3/8" EUE J-55 TBG. TO SAND @

4560'. BREAK CIRCULATION W/ AIR AND CLEAN OUT SAND TO TOP OF CBP @ 4650'. PU 2.5 POWER SWIVEL. BREAK CIRCULATION W/ AIR AND DRILL OUT CBP @ 4650'. LD 2.5 POWER SWIVEL. RIH AND TAG SAND @ 4900'. BREAK CIRCULATION W/ AIR AND CLEAN OUT SAND TO P.B.T.D.(5055'). LARGE AMOUNT OF GAS AND WATER W/ SAND. PUIC. SION. D-\$4000, T-\$162,000, DAY-6.

1/24/03

650# ON WELL THIS AM. BLED DOWN. RIH AND TAG SAND @ 4930'. BREAK CIRCULATION W/ AIR AND CLEAN OUT SAND TO P.B.T.D.(5055'). LARGE AMOUNT OF GAS AND WATER W/ SAND. PUIC. HOOK WELL UP TO SALES LINE FLOWING 300 MCF @ 200#. SDFN. D-\$4000, T-\$166,000, DAY-7.

1/25/03

WELL FLOWING 1300 MCF @ 200# THIS AM. RIG DAY OFF.

1/26/03

WELL FLOWING 1300 MCF @ 200# THIS AM. RIG DAY OFF.

1/27/03

WELL FLOWING 1200 MCF @ 200# THIS AM. BLED DOWN. RIH AND TAG SAND @ 5010'. BREAK CIRCULATION W/ AIR AND CLEAN OUT SAND TO P.B.T.D.(5055'). LARGE AMOUNT OF GAS AND WATER W/ SAND. PUIC. HOOK WELL UP TO SALES LINE FLOWING 400 MCF @ 200#. SDFN. D-\$4000, T-\$170,000, DAY-8.

1/28/03

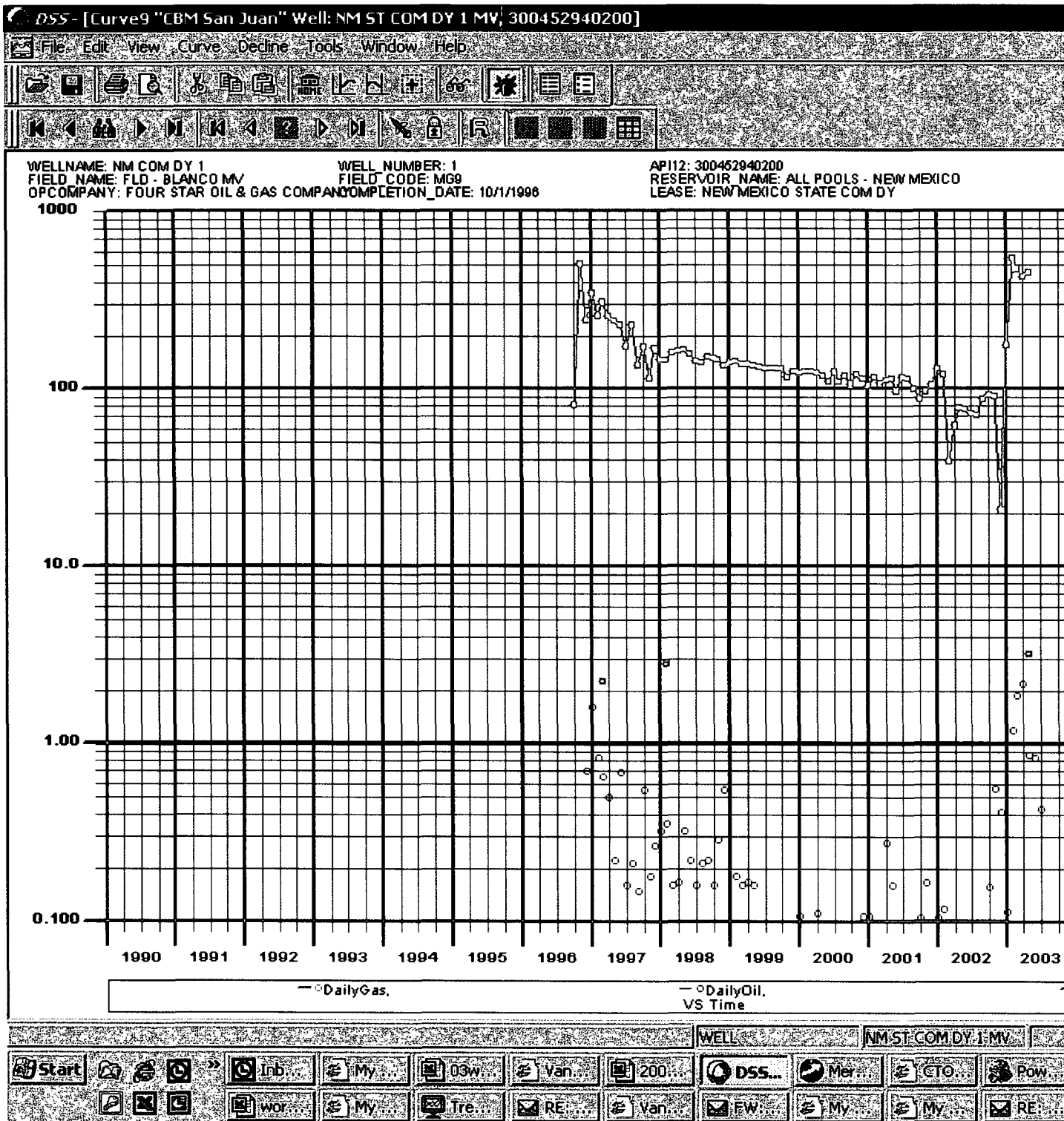
WELL FLOWING 1100 MCF @ 200# THIS AM. BLED DOWN. RIH AND TAG SAND @ 5036'. BREAK CIRCULATION W/ AIR AND CLEAN OUT SAND TO P.B.T.D.(5055'). LARGE AMOUNT OF GAS AND WATER W/ NO SAND. PUIC. HOOK WELL UP TO SALES LINE FLOWING 500 MCF @ 200#. SDFN. D-\$4000, T-\$174,000, DAY-9.

1/29/03

WELL FLOWING 1150 MCF @ 200# THIS AM. BLED DOWN. RIH AND TAG NO SAND. BREAK CIRCULATION W/ AIR AND CLEAN OUT TO P.B.T.D.(5055'). LARGE AMOUNT OF GAS AND WATER W/ NO SAND. TOOH AND LD BIT. RIH W/ PRODUCTION STRING AS FOLLOWS: 157 JTS. 2-3/8" EUE N-80 TBG.(4645'), 6 JTS. 2-3/8" NEW EUE J-55 TBG.(179'), 2-3/8" SEATING NIPPLE, 2-3/8" KNOTCH COLLAR. EOT IS 4838'. ND BOP. NU WELLHEAD. HOOK WELL UP TO SALES LINE FLOWING 900 MCF @ 200#. RDMO. D-\$4000, T-\$178,000, DAY-10. FINAL REPORT.

Jackson, Kenneth W. (kewj)

From: Meinert, David (DPME)
Sent: Wednesday, August 13, 2003 11:16 AM
To: Jackson, Kenneth W. (kewj)
Subject: Prod plots



New Mexico Com DY#1**API #30-045-29402****Blanco Meseverde Field San Juan County New Mexico**

	Monthly Gas Production	Monthly Cond. Production
04/2003	13,061	65.21
03/2003	14,632	58.24
02/2003	15,541	33.29
01/2003	5,477	3.60
12/2002	656	13.00
11/2002	2,762	17.00
10/2002	2,888	4.91
09/2002	2,640	1.67
08/2002	2,217	1.67
07/2002	2,272	0.00
06/2002	2,335	1.67
05/2002	2,430	1.67
04/2002	1,895	1.67
03/2002	1,224	1.67
02/2002	3,414	3.34
01/2002	4,056	3.34