

RECEIVED

In Lieu of Form 3160-4 (July 1992)

UNITED STATES DEPARTMENT OF THE INTERIOR BUREAU OF LAND MANAGEMENT

MAR 24 2009 SUBMITTED IN DUPLICATE

Bureau of Land Management Farmington Field Office

FORM APPROVED OMB NO 1004-0137 Expires February 28, 1995

5 LEASE DESIGNATION AND LEASE NO. NM-03190

6 IF INDIAN, ALLOTTEE OR

WELL COMPLETION OR RECOMPLETION REPORT AND LOG*

7 UNIT AGREEMENT NAME

Cox Canyon Unit

1a. TYPE OF WELL OIL WELL X GAS WELL DRY OTHER

b. TYPE OF COMPLETION X NEW WELL WORKOVER DEEPEN PLUG BACK DIFF RESVR OTHER

NMNM-78388A-MV

2 NAME OF OPERATOR WILLIAMS PRODUCTION COMPANY

8 FARM OR LEASE NAME, WELL NO Cox Canyon Unit 7C

3 ADDRESS AND TELEPHONE NO P.O. Box 640, Aztec, NM 87410 (505) 634-4208

9 API WELL NO 30-045-33018 - 00C2

4 LOCATION OF WELL (Report location clearly and in accordance with any State requirements)* At Surface 1485 FSL & 1940 FWL, sec 17, T32N, R11W At top production interval reported below At total depth

10 FIELD AND POOL, OR WILDCAT BLANCO MESA VERDE

11 SEC, T, R, M, OR BLOCK AND SURVEY OR AREA NE/4 SW/4, Sec17, T32N, R11W

14 PERMIT NO DATE ISSUED 12 COUNTY OR 13 STATE San Juan New Mexico

15 DATE SPUDDED 3-9-08 16 DATE T.D. REACHED 3-22-08 17 DATE COMPLETED (READY TO PRODUCE) 3-3-09 18 ELEVATIONS (DK, RKB, RT, GR, ETC)* 6737' GR 19 ELEVATION CASINGHEAD ROVD MAR 24 '09

20 TOTAL DEPTH, MD & TVD 8206' MD 21 PLUG, BACK T D, MD & TVD 8115' 22 IF MULTICOMP. HOW MANY 2 23 INTERVALS DRILLED BY ROTARY TOOLS CABLE TOOLS X M CWS, DTU

24 PRODUCING INTERVAL(S), OF THIS COMPLETION - TOP, BOTTOM, NAME (MD AND TVD)* BLANCO MESAVERDE 4929' - 5972' 25 WAS DIRECTIONAL SURVEY MADE YES DIST. 3

26 TYPE ELECTRIC AND OTHER LOGS RUN Aray Induction, Gamma-Ray-Density-Neutron, Compensated Dual Neutron, Temp log, 9 CBLs 27 WAS WELL CORED NO

Table with 6 columns: CASING SIZE/GRADE, WEIGHT, LB /FT, DEPTH SET (MD), HOLE SIZE, TOP OF CEMENT, CEMENTING RECORD, AMOUNT PULLED. Rows include 10 3/4", K-55; 7 7/8", K-55; 5-1/2", N-80.

Table with 8 columns: SIZE, TOP (MD), BOTTOM (MD), SACKS CEMENT*, SCREEN (MD), SIZE, DEPTH SET (MD), PACKER SET (MD). Row includes 4-1/2" OD x 4" ID x 20'.

Table with 2 columns: PERFORATION RECORD (Interval, size, and number) and ACID, SHOT, FRACTURE, CEMENT SQUEEZE, ETC. Rows include Upper Cliffhouse, CH/MEN, and Point Lookout.

Table with 8 columns: DATE OF FIRST PRODUCTION, PRODUCTION METHOD, WELL STATUS, DATE OF TEST, TESTED, CHOKE SIZE, PROD'N FOR TEST PERIOD, OIL - BBL, GAS - MCF, WATER - BBL, GAS-OIL RATIO, FLOW TBG PRESS, CASING PRESSURE, CALCULATED 24-HOUR RATE, OIL - BBL, GAS - MCF, WATER - BBL, OIL GRAVITY-API (CORR).

34 DISPOSITION OF GAS (Sold, used for fuel, vented, etc) TO BE SOLD TEST WITNESSED BY Al Rector

35 LIST OF ATTACHMENTS SUMMARY OF POROUS ZONES, WELLBORE DIAGRAM

36 I hereby certify that the foregoing and attached information is complete and correct as determined from all available records SIGNED Larry Higgins TITLE Drlg COM DATE 3-20-09

ACCEPTED FOR RECORD MAR 24 2009 FARMINGTON FIELD OFFICE BY J. Salvers

NMOCD

37 SUMMARY OF POROUS ZONES (Show all important zones of porosity and contents thereof, cored intervals, and all drill-stem, tests, including depth interval tested, cushion used, time tool open, flowing and shut-in pressures, and recoveries)

38 GEOLOGIC MARKERS

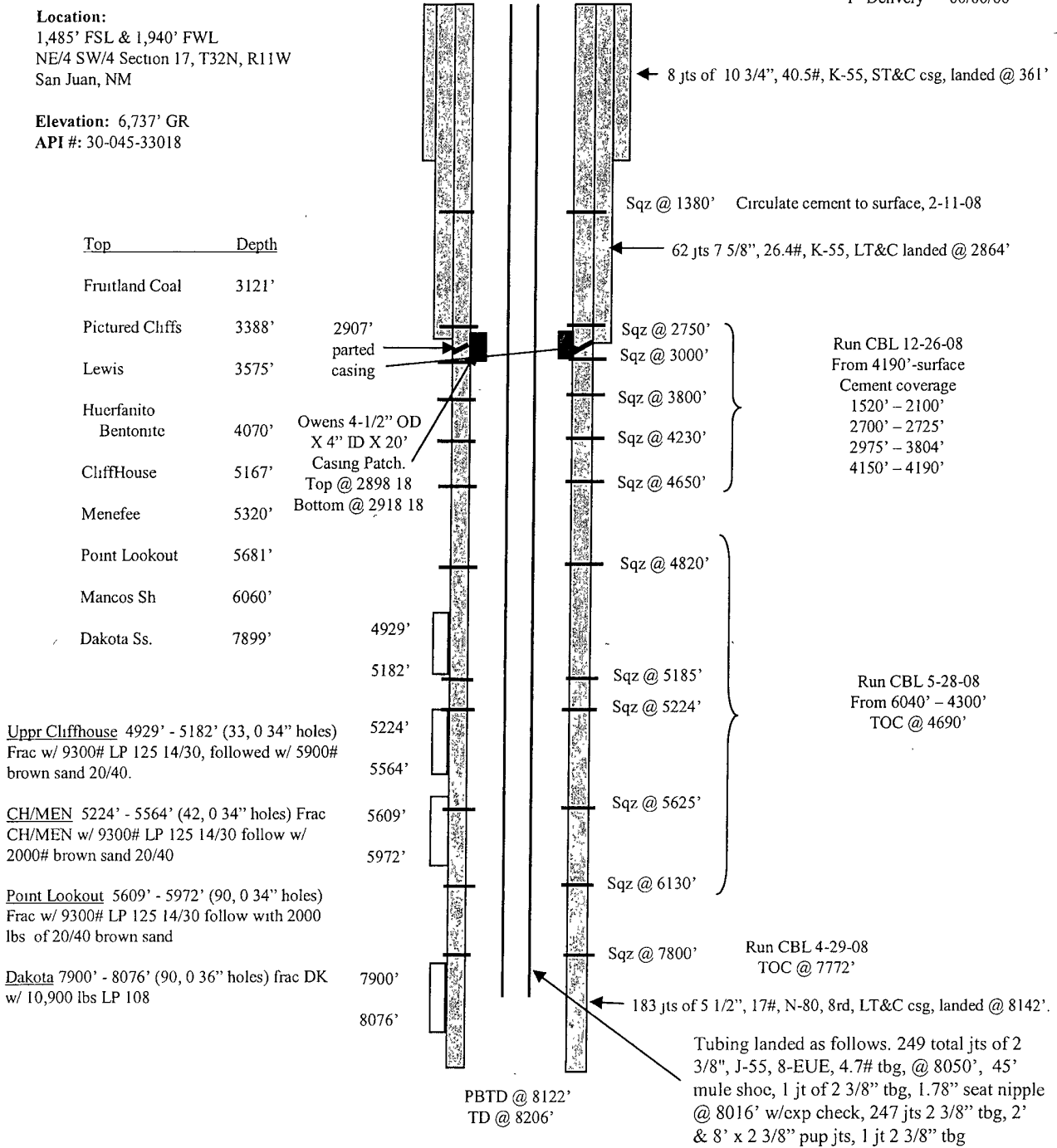
FORMATION	TOP	BOTTOM	DESCRIPTION, CONTENTS, ETC		NAME	TOP		
						NAME	MEASURED DEPTH	TRUE VERTICAL DEPTH
						KIRTLAND	1448'	
						FRUITLAND COAL	3121'	
						PICTURED CLIFFS	3388'	
						CLIFFHOUSE	5167'	
						MENEFEE	5320'	
						POINT LOOKOUT	5681'	
						MANCOS	6060'	
						DAKOTA	7899'	

COX CANYON UNIT #7C BLANCO MV/BASIN DK

Spud Date 03/09/08
 Completed 06/13/08
 Sqz/repair 03/02/09
 1st Delivery 00/00/00

Location:
 1,485' FSL & 1,940' FWL
 NE/4 SW/4 Section 17, T32N, R11W
 San Juan, NM

Elevation: 6,737' GR
API #: 30-045-33018



Top	Depth
Fruitland Coal	3121'
Pictured Chffs	3388'
Lewis	3575'
Huerfanito Bentonite	4070'
CliffHouse	5167'
Menefee	5320'
Point Lookout	5681'
Mancos Sh	6060'
Dakota Ss.	7899'

Uppr Cliffhouse 4929' - 5182' (33, 0 34" holes) Frac w/ 9300# LP 125 14/30, followed w/ 5900# brown sand 20/40.

CH/MEN 5224' - 5564' (42, 0 34" holes) Frac CH/MEN w/ 9300# LP 125 14/30 follow w/ 2000# brown sand 20/40

Point Lookout 5609' - 5972' (90, 0 34" holes) Frac w/ 9300# LP 125 14/30 follow with 2000 lbs of 20/40 brown sand

Dakota 7900' - 8076' (90, 0 36" holes) frac DK w/ 10,900 lbs LP 108

HOLE SIZE	CASING	CEMENT	CU. FT.	CMT TOP
14-3/4"	10-3/4", 40.5#	300 s xs	420 cu.ft.	Surface
9-7/8"	7-5/8", 26.4#	700 s xs	1406 cu.ft.	Surface
6-3/4"	5-1/2", 17#	370 s xs	888 cu.ft.	See above

LH 03/10/09