

UNITED STATES
DEPARTMENT OF THE INTERIOR
BUREAU OF LAND MANAGEMENT

APPLICATION FOR PERMIT TO DRILL, DEEPEN, OR PLUG BACK

1a. Type of Work DRILL	RECEIVED FEB - 4 2003 Bureau of Land Management Durango, Colorado	5. Lease Number I-22-IND-2772 Unit Reporting Number
1b. Type of Well GAS		6. If Indian, All. or Tribe Ute Mountain Ute
2. Operator BURLINGTON RESOURCES Oil & Gas Company		7. Unit Agreement Name
3. Address & Phone No. of Operator PO Box 4289, Farmington, NM 87499 (505) 326-9700	Approval of this agreement does not warrant or certify that the operator thereof and other holders of operating rights hold legal or equitable title to those rights in the subject lease which are committed hereto.	8. Farm or Lease Name Ute Mountain Ute 9. Well Number 69
4. Location of Well 820' FSL, 1500' FEL Latitude 36° 59.8468, Longitude 108° 17.5142		10. Field, Pool, Wildcat Barker Creek Dakota Gas 11. Sec., Twn, Rge, Mer. (NMPM) Sec. 10, T-32-N, R-14-W API # 30-045-32044
14. Distance in Miles from Nearest Town 12 miles to La Plata		12. County San Juan 13. State NM
15. Distance from Proposed Location to Nearest Property or Lease Line 820'		
16. Acres in Lease Venting / Flaring approved for 30 days per NTL-4A		17. Acres Assigned to Well 200.48 A11 204.0
18. Distance from Proposed Location to Nearest Well, Drig, Compl, or Applied for on this Lease 1500'		
19. Proposed Depth 3475'	SEE ATTACHED CONDITIONS OF APPROVAL	20. Rotary or Cable Tools Rotary
21. Elevations (DF, FT, GR, Etc.) 7022'		22. Approx. Date Work will Start
23. Proposed Casing and Cementing Program See Operations Plan attached		
24. Authorized by: <u>[Signature]</u> Regulatory/Compliance Supervisor		Date <u>1-10-03</u>

PERMIT NO. _____ APPROVAL DATE _____
APPROVED BY /s/ Brian W. Davis Acting Field Office Manager OCT 30 2003
DATE

DEC 3 2003

Archaeological Report to be submitted
Threatened and Endangered Species Report to be submitted
NOTE: This format is issued in lieu of U.S. BLM Form 3160-3
Title 18 U.S.C. Section 1001, makes it a crime for any person knowingly and willfully to make to any department or agency of the United States any false, fictitious or fraudulent statements or presentations as to any matter within its jurisdiction.

HOLD C154 FOR NSP order

WOOD

District I
PO Box, 1980, Hobbs, NM 88241-1980

District II
PO Drawer DD, Artesia, NM 88211-0719

District III
1900 Rio Brazos Rd., Aztec, NM 87410

District IV
PO Box 2088, Santa Fe, NM 87504-2088

State of New Mexico
Energy, Minerals & Natural Resources Department

OIL CONSERVATION DIVISION
PO Box 2088
Santa Fe, NM 87504-2088

Form C-102
Revised February 21, 1994
Instructions on back
Submit to: Appropriate District Office
State Lease - 4 Copies
Fee Lease - 3 Copies

☐ AMENDED REPORT

WELL LOCATION AND ACREAGE DEDICATION PLAT

*API Number 30-045- 32044		*Pool Code 71520	*Pool Name Barker Creek Dakota gas
*Property Code 18725	*Property Name UTE MTN UTE		*Well Number 69
*OGRID No. 14538	*Operator Name BURLINGTON RESOURCES OIL & GAS COMPANY, LP		*Elevation 7022'

¹⁰ Surface Location

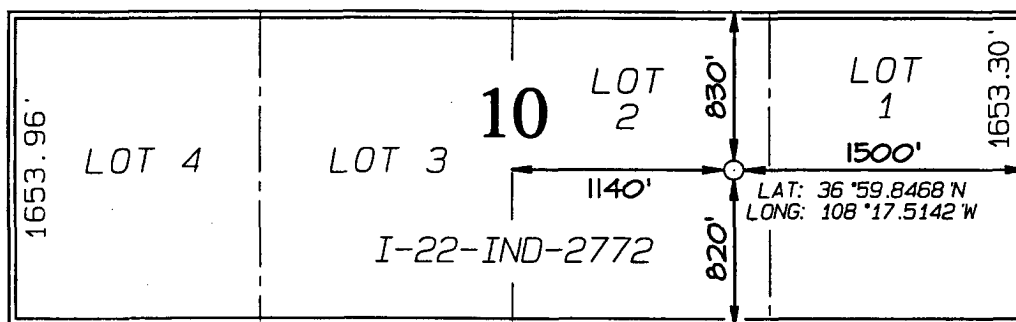
UL or lot no.	Section	Township	Range	Lot Idn	Feet from the	North/South line	Feet from the	East/West line	County
0	10	32N	14W		820	SOUTH	1500	EAST	SAN JUAN

¹¹ Bottom Hole Location If Different From Surface

UL or lot no.	Section	Township	Range	Lot Idn	Feet from the	North/South line	Feet from the	East/West line	County
¹² Dedicated Acres 200.48 204.0					¹³ Joint or Infill	¹⁴ Consolidation Code	¹⁵ Order No.		

NO ALLOWABLE WILL BE ASSIGNED TO THIS COMPLETION UNTIL ALL INTERESTS HAVE BEEN CONSOLIDATED OR A NON-STANDARD UNIT HAS BEEN APPROVED BY THE DIVISION

5285.94' COLORADO / NEW MEXICO STATE-LINE BOUNDARY



¹⁷ OPERATOR CERTIFICATION

I hereby certify that the information contained herein is true and complete to the best of my knowledge and belief

Signature

Peggy Cole

Printed Name

Regulatory Supervisor

Title

Date

¹⁸ SURVEYOR CERTIFICATION

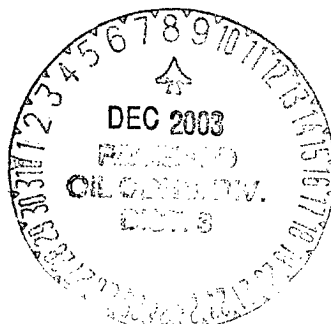
I hereby certify that the well location shown on this plat was plotted from field notes of actual surveys made by me or under my supervision, and that the same is true and correct to the best of my belief.

Survey Date: **SEPTEMBER 4, 2002**

Signature and Seal of Professional Surveyor



JASON C. EDWARDS
Certificate Number 15269



UNITED STATES
DEPARTMENT OF THE INTERIOR
BUREAU OF LAND MANAGEMENT

Sundry Notices and Reports on Wells

1. Type of Well
GAS

2. Name of Operator

BURLINGTON

RESOURCES OIL & GAS COMPANY

3. Address & Phone No. of Operator

PO Box 4289, Farmington, NM 87499 (505) 326-9700

4. Location of Well, Footage, Sec., T, R, M

820' FSL, 1500' FEL, Sec. 10, T-32-N, R-14-W, NMPM

5. Lease Number

I-22-IND-2772

6. If Indian, All. or
Tribe Name

Ute Mountain Ute

7. Unit Agreement Name

8. Well Name & Number

Ute Mountain Ute #69

9. API Well No.

30-045-

10. Field and Pool

Barker Creek ~~Wildcat~~ Dakota

11. County and State

San Juan Co, NM

12. CHECK APPROPRIATE BOX TO INDICATE NATURE OF NOTICE, REPORT, OTHER DATA

Type of Submission

Type of Action

☒ Notice of Intent

☐ Abandonment

☒ Change of Plans

☐ Subsequent Report

☐ Recompletion

☐ New Construction

☐ Final Abandonment

☐ Plugging Back

☐ Non-Routine Fracturing

☐ Casing Repair

☐ Water Shut off

☐ Altering Casing

☐ Conversion to Injection

☐ Other -

13. Describe Proposed or Completed Operations

It is intended to revise the surface casing and cement design, and BOP specifications for the subject well according to the attached operations plan and BOP diagram.



14. I hereby certify that the foregoing is true and correct.

Signed

Brian W. Davis

Title Regulatory Supervisor Date 2/24/03

TLW

(This space for Federal or State Office use)

APPROVED BY */s/ Brian W. Davis*

Acting Field Office Manager

Date

~~OCT 30 2003~~

CONDITION OF APPROVAL, if any:

Title 18 U.S.C. Section 1001, makes it a crime for any person knowingly and willfully to make to any department or agency of the United States any false, fictitious or fraudulent statements or representations as to any matter within its jurisdiction.

DEC 3 2003

WMOCD

OPERATIONS PLAN

Well Name: Ute Mountain Ute #69
Location: 820' FSL, 1500' FEL, Sec.10, T-32-N, R-14-W
San Juan County, NM
Latitude 36° 59.8468'N, Longitude 108° 17.5142'W
Formation: Wildcat Dakota
Elevation: 7022' GR

<u>Formation Tops:</u>	<u>Top</u>	<u>Bottom</u>	<u>Contents</u>
Surface	Mesaverde	1215'	gas
Mancos	1215'	2325'	
Gallup (Niobrara)	2325'	2985'	oil
Greenhorn	2985'	3029'	
Graneros	3029'	3097'	
Dakota	3097'	3325'	gas
Morrison	3325'		gas
TD	3475'		

Logging Program:

Mudlog - 1000' to TD
Drillstem test will be performed in the Niobrara formation.
Open hole logs - Platform Express, Temp, Density & Neutron
Porosity, Bulk Density/Correction - TD to surface casing.
Cased hole logs - CBL/GR - TD to surface.
Cores - none

Mud Program:

<u>Interval</u>	<u>Type</u>	<u>Weight</u>	<u>Vis.</u>	<u>Fluid Loss</u>
0- 300'	Spud	8.4-9.0	40-50	no control
0- 3475'	LSND	8.4-9.0	40-60	no control

Pit levels will be visually monitored to detect gain or loss of fluid control.

Casing Program (as listed, the equivalent, or better):

<u>Hole Size</u>	<u>Depth Interval</u>	<u>Csg. Size</u>	<u>Wt.</u>	<u>Grade</u>
11"	0' - 300'	8 5/8"	24.0#	WC-50
7 7/8"	0' - 3475'	5 1/2"	15.5#	J-55

Tubing Program:

0' - 3475' 2 3/8" 4.7# J-55

BOP Specifications, Wellhead and Tests:

Surface to Total Depth -

11" 2000 psi minimum double gate BOP stack (Reference Figure #1).
After nipple-up prior to drilling out surface casing, rams and casing will be tested to 600 psi for 30 minutes.

Surface to Total Depth -

2" nominal, 2000 psi minimum choke manifold (Reference Figure #3).

Completion Operations -

7 1/16" 2000 psi double gate BOP stack (Reference Figure #2).
After nipple-up prior to completion, pipe rams, casing and liner top will be tested to 2000 psi for 15 minutes.

Float Equipment:

- 8 5/8" surface casing - saw tooth guide shoe.
Centralizers will be run in accordance with Onshore Order #2.
- 5 1/2" intermediate casing - guide shoe and self-fill float collar. Standard centralizers run every other joint above shoe. Standard centralizers thereafter every fourth joint up to the base of the surface pipe.

Wellhead -

8 5/8" x 5 1/2" x 2 3/8" x 2000 psi tree assembly.

General -

- Pipe rams will be actuated once each day and blind rams will be actuated once each trip to test proper functioning.
- An upper kelly cock valve with handle available and drill string valves to fit each drill string will be available on the rig floors at all times.
- BOP pit level drill will be conducted weekly for each drilling crew.
- All BOP tests and drills will be recorded in daily drilling reports.
- Blind and pipe rams will be equipped with extension hand wheels.

Cementing:

8 5/8" surface casing - cement with 174 sx Class A, B Portland Type I, II cement (244 cu.ft. of slurry). WOC 8 hours before pressure testing or drilling out from under surface casing.

5 1/2" production casing - lead w/365 sacks Premium Lite with 3% calcium chloride, 5 pps LCM-1, and 1/4#/sack flocele, 0.4% FL-52, & 0.4% SMS. Tail with 90 sacks Type III cmt with 1% calcium chloride, 1/4#/sack flocele and 0.2% FL-52 (903 cu.ft., 50% excess to circulate to surface).

Note: If open hole logs are run, cement volumes will be based on 25% excess over caliper volumes.

Saw tooth guide shoe on bottom. Bowspring centralizers will be run in accordance with Onshore Order #2.

- If hole conditions permit, an adequate water spacer will be pumped ahead of each cement job to prevent cement/mud contamination or cement hydration.

Additional Information:

- The Dakota formation will be completed.
- No abnormal temperatures or hazards are anticipated.
- Anticipated pore pressure for the Dakota is 750 psi.
- Sufficient LCM will be added to the mud system to maintain well control, if lost circulation is encountered.
- The S2S2 of Section 10 is dedicated to the Dakota in this well. This gas is dedicated.


Drilling Engineer

2/25/03
Date

Burlington Resources Oil & Gas Company

Tribal Lease: I-22-IND-2772

Well: Ute Mountain Ute #69

Location: 820' FSL & 1500' FEL

Sec: 10, T: 32 N, R: 13.5 W.

Conditions of Approval - Drilling Plan:

1. All drilling locations must be built as drilled, not constructed back to back prior to drilling.

2. The BOP must have adjustable chokes.

3. No additional zones will be commingled without UMU Tribal and BLM approval.

4. Stabilized Bottom hole pressures must be taken from each perforated zone.

5. Notify this office during working hours at least 72 hours prior to:

perform a spudding the well*

BLM will running casing strings and cementing

BOP tests

Drill Stem testing

at this time provide phone numbers for the rig and your field representative (mobile and office) to facilitate the scheduling of BLM Technicians to witness the above operations.

6. All BOP tests will be performed with a test plug in place. BOP will be tested to full stack working pressure and annular preventer to 50% maximum stack working pressure. All accumulators will be function tested as per Onshore Order #2. All 2M or greater systems require adjustable chokes as per Onshore Order #2. 3M BOPs must have an Annular Preventer and the Choke line must be 3".

7. If a BLM Inspector is not present during the initial BOP test, please provide chart record.

8.7. Surface Casing must be set to 300' minimum. Cementing of the 7" Surface Casing: If cement does not circulate or cement circulates but falls back in the annular beyond visual sight, a temperature survey or other preferred method may be employed to determine the amount of fall back.

Cementing of the 4-1/2" Production Casing: A cement bond log will be run prior to perforating. ~~A 360 degree cement evaluation log is recommended, but the conventional bond log would be acceptable.~~ Whether or not the cement circulates to the surface, a cement bond log will be run prior to perforating for completion.

3. Neoglyptodontinae (10 genera, 14 species) (all 10 genera and 14 species)

5. Note, the reference, not the name of the person.

office) to facilitate the collection of data and to ensure the integrity of the