

District I
1625 N. French Dr., Hobbs, NM 88240
District II
811 S. 1st Street, Artesia, NM 88210
District III
1000 Rio Brazos Rd., Aztec, NM 87410
District IV
1220 S. St. Francis Dr., Santa Fe, NM 87505

State of New Mexico
Energy, Minerals & Natural Resources

Form C-101
Revised March 17, 1999

Oil Conservation Division
1220 S. St. Francis Dr.
Santa Fe, NM 87505

Submit to appropriate District Office
State Lease - 6 Copies
Fee Lease - 5 Copies

☐ AMENDED REPORT

APPLICATION FOR PERMIT TO DRILL, RE-ENTER, DEEPEN, PLUGBACK, OR ADD A ZONE

¹ Operator Name and Address XTO Energy Inc. 2700 Farmington Ave., Bldg. K. Ste 1		² OGRID Number 167067
⁴ Property Code 2824	⁵ Property Name State Gas Com "BJ"	³ API Number 30-045-32045
		⁶ Well No. #2

⁷ Surface Location

UL or lot no.	Section	Township	Range	Lot. Idn	Feet from the	North/South Line	Feet from the	East/West line	County
M	2	30N	13W		760'	South	665'	West	San Juan

⁸ Proposed Bottom Hole Location If Different From Surface

UL or lot no.	Section	Township	Range	Lot. Idn	Feet from the	North/South Line	Feet from the	East/West line	County
⁹ Proposed Pool 1 Basin Dakota					¹⁰ Proposed Pool 2				

¹¹ Work Type Code N	¹² Well Type Code G	¹³ Cable/Rotary R	¹⁴ Lease Type Code State	¹⁵ Ground Level Elevation 5,820' Ground Level
¹⁶ Multiple No	¹⁷ Proposed Depth 6,825'	¹⁸ Formation Dakota	¹⁹ Contractor Bearcat Drilling	²⁰ Spud Date Winter, 2004

²¹ Proposed Casing and Cement Program

Hole Size	Casing Size	Casing weight/foot	Setting Depth	Sacks of Cement	Estimated TOC
12-1/4"	8-5/8"	24.0#/ft	320'	+250 sx	Surface
7-7/8"	4-1/2"	10.5 #/ft	6,825'	+965 sx	Surface

²² Describe the proposed program. If this application is to DEEPEN or PLUG BACK, give the data on the present productive zone and proposed new productive zone. Describe the blowout prevention program, if any. Use additional sheets if necessary.

Drl to 320'. Cmt 8-5/8" csg w/250 sx Type III cmt w/2% CC & 1/4#/sx cello (14.5 ppg, 1.39 cuft, 6.8 gal/sx).

Set 4-1/2" csg @ 6,825'. Cmt first stg (tail) w/150 sx Type III w/5% A-10, 2% Pheno, 1/4#/sx cello, 0.2% FL & 0.3% disp (14.2 ppg, 1.54 cuft) preceded by (lead) 340 sx Prem Lite w/2% KCl, 2% Phenoseal, 0.2% disp, 0.5% FL & 1/4# cello (12.5 ppg, 2.01 cuft). Cement second stg (tail) w/100 sx Type III neat (14.5 ppg, 1.39 cuft) preceded by (lead) 375 sx Type III w/8% gel, 2% Phenoseal & 1/4# cello (11.4 ppg, 3.03 cuft). Final cmt volumes will be obtained from logs +40%. BOP diagram is attached. DV Tool will be located @ + - 4,000'.

²³ I hereby certify that the information given above is true and complete to the best of my knowledge and belief.

Signature:

Printed name: **Jeffrey W. Patton**

Title: **Drilling Engineer**

Date:

Phone:

OIL CONSERVATION DIVISION

Approved by:

Title:

Approval Date:

Conditions of Approval:

Attached ☐

DEPUTY OIL & GAS INSPECTOR, DIST. 10

DEC - 8 2003

Expiration Date:

DEC - 8 2004

DISTRICT I
P.O. Box 1980, Hobbs, N.M. 88241-1980

DISTRICT II
P.O. Drawer DD, Artesia, N.M. 88211-0719

DISTRICT III
1000 Rio Brazos Rd., Aztec, N.M. 87410

DISTRICT IV
PO Box 2088, Santa Fe, NM 87504-2088

State of New Mexico
Energy, Minerals & Natural Resources Department

OIL CONSERVATION DIVISION

P.O. Box 2088
Santa Fe, NM 87504-2088

Form C-102

Revised February 21, 1994

Instructions on back

Submit to Appropriate District Office

State Lease - 4 Copies

Fee Lease - 3 Copies

☐ AMENDED REPORT

WELL LOCATION AND ACREAGE DEDICATION PLAT

¹ API Number 30-045-32045	² Pool Code 71599	³ Pool Name Basin Dakota
⁴ Property Code 22824	⁵ Property Name STATE GAS COM BJ	⁶ Well Number 2
⁷ OGRID No. 167067	⁸ Operator Name XTO ENERGY INC.	⁹ Elevation 5820

¹⁰ Surface Location

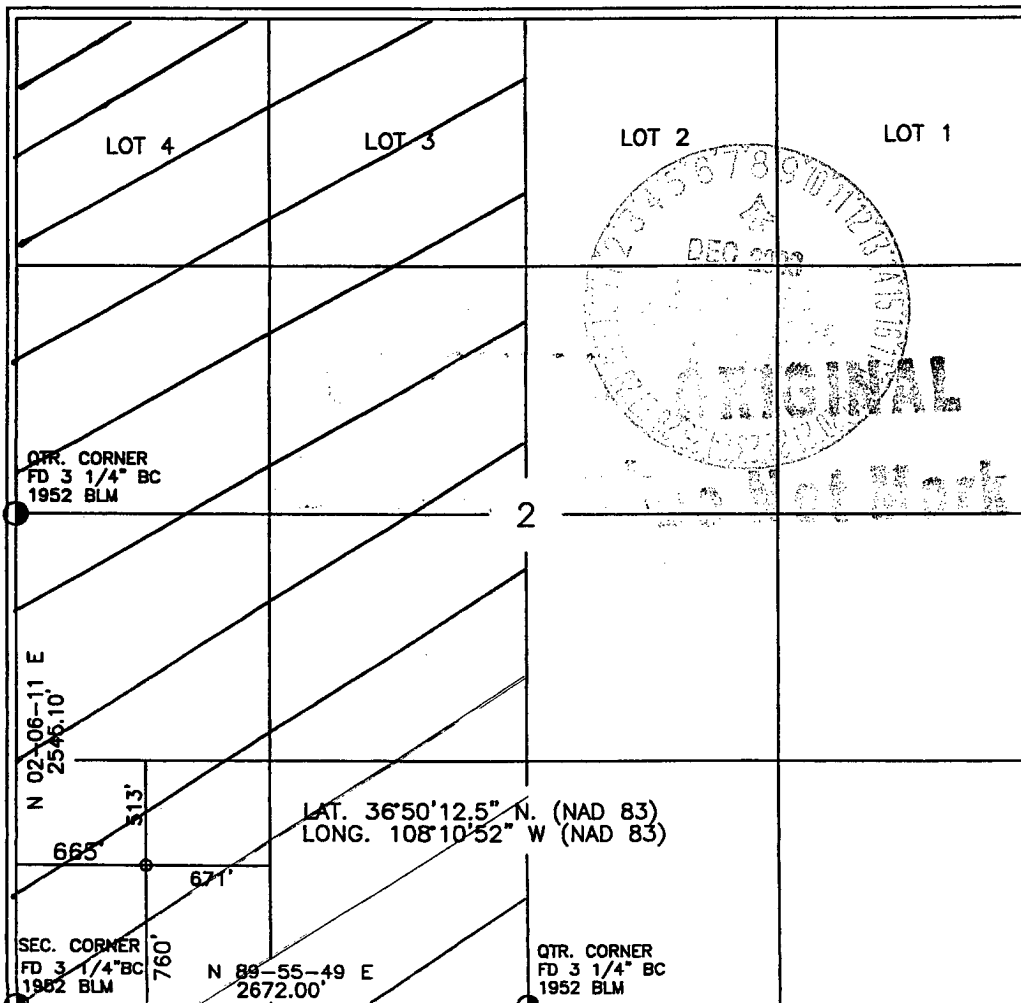
UL or lot no.	Section	Township	Range	Lot Idn	Feet from the	North/South line	Feet from the	East/West line	County
M	2	30-N	13-W		760	SOUTH	665	WEST	SAN JUAN

¹¹ Bottom Hole Location If Different From Surface

UL or lot no.	Section	Township	Range	Lot Idn	Feet from the	North/South line	Feet from the	East/West line	County
¹² Dedicated Acres 319.14 w/2			¹³ Joint or Infill I		¹⁴ Consolidation Code		¹⁵ Order No.		

NO ALLOWABLE WILL BE ASSIGNED TO THIS COMPLETION UNTIL ALL INTERESTS HAVE BEEN CONSOLIDATED
OR A NON-STANDARD UNIT HAS BEEN APPROVED BY THE DIVISION

16



17 OPERATOR CERTIFICATION

I hereby certify that the information contained herein is true and complete to the best of my knowledge and belief

Kelly K Small
Signature
Kelly K Small
Printed Name
Drilling Assistant
Title
7/22/03
Date

18 SURVEYOR CERTIFICATION

I hereby certify that the well location shown on this plat was plotted from field notes of actual surveys made by me or under my supervision, and that the same is true and correct to the best of my belief.

3 DAVID E. JOHNSON 3
Date of Survey
Signature and Seal of Professional Surveyor:
14827
14827
Certificate Number

BOP SCHEMATIC FOR DRILLING OPERATIONS CLASS 1 (2M) NORMAL PRESSURE

TESTING PROCEDURE

1. Test BOP after installation:

Pressure test BOP to 200-300
psig (low pressure) for 5 min.

Test BOP to Working Press or
to 70% internal yield of surf csg
(10 min).

2. Test operation of (both) rams on every trip.

3. Check and record Accumulator pressure on every tour.

4. Re-pressure test BOP stack after changing out rams.

5. Have kelly cock valve with handle available.

6. Have safety valve and subs to fit all sizes of drill string.

