

In Lieu of
Form 3160-4
(July 1992)

UNITED STATES
DEPARTMENT OF THE INTERIOR
BUREAU OF LAND MANAGEMENT

SUBMIT IN
DUPLICATE

(See other instructions on
reverse side)

FORM APPROVED
OMB NO 1004-0137
Expires: February 28, 1995

WELL COMPLETION OR RECOMPLETION REPORT AND LOG*

RECEIVED

JUL 09 2009

Bureau of Land Management
Farmington Field Office

7 UNIT AGREEMENT NAME

Rosa Unit

Report Mancos production to lease

8 FARM OR LEASE NAME, WELL NO

Rosa Unit #6C

9 API WELL NO

30-039-30181-0001

10 FIELD AND POOL, OR WILDCAT

Basin Mancos

11 SEC., T.R.M., OR BLOCK AND
SURVEY OR AREA

Sec 27, T31N, R5W

12 COUNTY OR

Rio Arriba

13 STATE

New Mexico

19 ELEVATION CASINGHEAD

RCVD JUL 13 '09

ROTARY TOOLS

CABLE TOOLS

X OIL CONS. DIV.

25 WAS DIRECTIONAL SURVEY MADE

YES

DIST. 3

27 WAS WELL CORED

No

15 DATE

SPUDDED

9-7-08

16 DATE T D

REACHED

9-28-08

17 DATE COMPLETED (READY TO PRODUCE)

7-2-09

Mancos Completion

18 ELEVATIONS (DK, RKB, RT, GR, ETC)*

6782' GR

20 TOTAL DEPTH, MD & TVD

8905' MD / 8433' TVD

21 PLUG, BACK T D, MD & TVD

8894' MD / 8422' TVD

22 IF MULTICOMP,

HOW MANY

3*

23 INTERVALS

DRILLED BY

24 PRODUCING INTERVAL(S), OF THIS COMPLETION - TOP, BOTTOM, NAME (MD AND TVD)*

Basin Mancos 7735' - 8200' MD Dakota isolated with CIBP @ 8250' * Mesaverde to be completed at later date

26 TYPE ELECTRIC AND OTHER LOGS RUN

RST and CBL

28 CASING REPORT (Report all strings set in well)

CASING SIZE/GRADE	WEIGHT, LB / FT	DEPTH SET (MD)	HOLE SIZE	TOP OF CEMENT, CEMENTING RECORD	AMOUNT PULLED
10-3/4", K-55	40 5#	315'	14-3/4"	250 SX - SURFACE	
7-5/8"	26 4#	4611'	9-7/8"	825 SX - SURFACE	
5-1/2", N-80	17 0#	8903'	6-3/4"	180 SX - 5200' (CBL)	

29 LINER RECORD

SIZE	TOP (MD)	BOTTOM (MD)	SACKS CEMENT*	SCREEN (MD)	SIZE	DEPTH SET (MD)	PACKER SET (MD)
					2.375", 4 7#, J-55 & N-80, EUE 8rd	8015'	none

31 PERFORATION RECORD (Interval, size, and number)

Mancos 2nd 7735'-7955' Total of 39, 0.34" holes

Mancos 1st 8015'-8200' Total of 39, 0.34" holes

32 ACID, SHOT, FRACTURE, CEMENT SQUEEZE, ETC

DEPTH INTERVAL (MD)	AMOUNT AND KIND OF MATERIAL USED
7735' - 7955'	Fraced with 5100# 100 mesh BASF followed w/187,400# 40/70 white ottowa sand
8015' - 8200'	Fraced with 5100# 100 mesh white sand followed w/200,300# 40/70 BASF

33 PRODUCTION

DATE OF FIRST PRODUCTION		PRODUCTION METHOD (Flowing, gas lift, pumping-size and type of pump)				WELL STATUS (PRODUCING OR SI)	
		Flowing				flowing	
DATE OF TEST	TESTED	CHOKE SIZE	PROD'N FOR TEST PERIOD	OIL - BBL	GAS - MCF	WATER - BBL	GAS-OIL RATIO
7-2-09	10 hr	2"					
FLOW TBG PRESS	CASING PRESSURE	CALCULATED 24-HOUR RATE			OIL - BBL	GAS - MCF	WATER - BBL
0	17 oz					623 mcf/d	

34 DISPOSITION OF GAS (Sold, used for fuel, vented, etc.) TO BE SOLD

NMCCD

TEST WITNESSED BY: Buddy Banks
ALL 2-PIED FOR 1-4 CORD

35 LIST OF ATTACHMENTS SUMMARY OF POROUS ZONES, WELLBORE DIAGRAM

36 I hereby certify that the foregoing and attached information is complete and correct as determined from all available records

SIGNED

Larry Higgins

TITLE Drlg COM

DATE 7-7-09

07/16

JUL 09 2009

FARMINGTON FIELD OFFICE
BY T. S. SANCHEZ

37 SUMMARY OF POROUS ZONES (Show all important zones of porosity and contents thereof, cored intervals, and all drill-stem, tests, including depth interval tested, cushion used, time tool open, flowing and shut-in pressures, and recoveries)					38 GEOLOGIC MARKERS			
FORMATION	TOP	BOTTOM	DESCRIPTION, CONTENTS, ETC		NAME	TOP		
						NAME	MEASURED DEPTH	TRUE VERTICAL DEPTH
						PICTURED CLIFFS	4143'	3674'
						LEWIS	4420'	3949'
						CLIFFHOUSE	6322'	5851'
						MENEFEE	6366'	5895'
						POINT LOOKOUT	6567'	6096'
						MANCOS	7034'	6563'
						DAKOTA	8782'	8310'

ROSA UNIT #6C
BLANCO MV / BASIN MANCOS / BASIN DK

Surface Location
 755' FSL and 880' FWL
 SW/4 SW/4 Sec 27 (M), T31N, R05W
 Rio Arriba, NM

Bottom Hole Location
 1714' FSL and 2424' FWL
 NE/4 SW/4 Sec 27 (K), T31N, R05W
 Rio Arriba, NM

Elevation: 3782' GR
 API # 30-039-30181

Spud 09/07/08
 DK Completed: 10/27/08
 MC Completed: 07/02/09
 MV Complete: 00/00/00
 1st Delivery: 11/08/08

Top	MD Depth	TVD Depth
Pictured Cliffs	4143'	3674'
Lewis	4420'	3949'
Cliffhouse Ss	6322'	5851'
Menefee	6366'	5895'
Point Lookout	6567'	6096'
Mancos	7034'	6563'
Dakota	8782'	8310'

RCVD JUL 13 '09
OIL CONS. DIV.
DIST. 3

MC: Land well @ 8015' KB as follows,
 one 1/2 M/S, one jt 2.375" J-55 tbg, one
 1.78" S/N, 134 jts 2.375", 4 7#, J-55, EUE
 8rd tbg, & 120 jts 2.375", 4.7#, N-80, EUE
 8rd tbg (255 total jts), S/N set @ 7984'

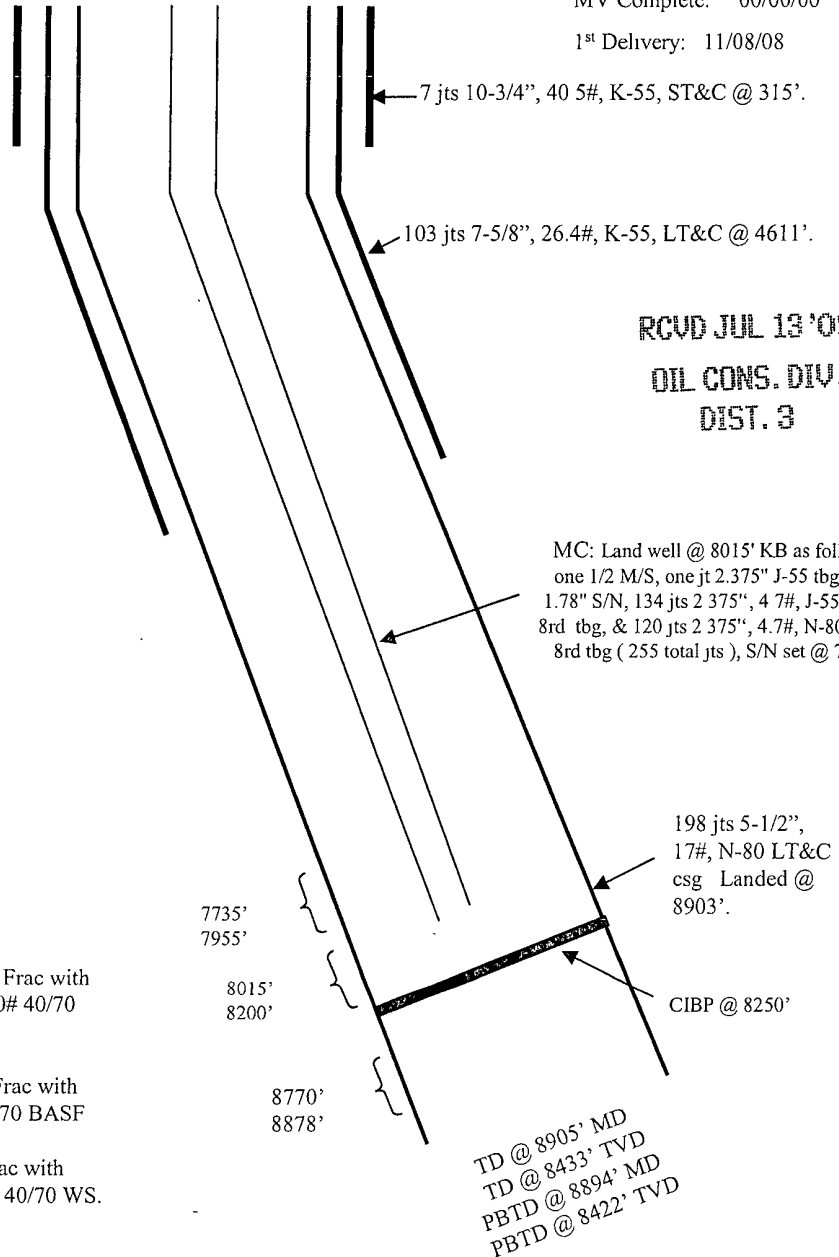
Stimulation:

NOTE: Mancos only flowing at this time

Mancos 2nd 7735'-7955' (39, 0.34" holes) Frac with
 5100# 100 mesh BASF follow with 187,400# 40/70
 white ottowa sand

Mancos 1st: 8015'-8200' (39, 0.34" holes) Frac with
 5100# white sand follow with 200,300# 40/70 BASF

Dakota: 8770' - 8878' (57, 0.34" holes) Frac with
 7500# 100 mesh WS, follow with 118,400# 40/70 WS.



Hole Size	Casing	Cement	Volume	Top of Cmt
14-3/4"	10-3/4", 40.5#	250 sxs	347 cu.ft.	Surface
9-7/8"	7-5/8", 26.4#	825 sxs	1669 cu.ft.	Surface
6-3/4"	5-1/2", 17#	180 sxs	443 cu.ft.	5200' CBL