

District I
1625 N French Dr, Hobbs, NM 88240

District II
1301 W Grand Ave, Artesia, NM 88210

District III
1000 Rio Brazos Rd, Aztec, NM 87410

District IV
1220 S. St Francis Dr., Santa Fe, NM 87505

State of New Mexico
Energy Minerals and Natural Resources
Department
Oil Conservation Division
1220 South St. Francis Dr.
Santa Fe, NM 87505

Form C-144
July 21, 2008

For temporary pits, closed-loop systems, and below-grade tanks, submit to the appropriate NMOCD District Office

For permanent pits and exceptions submit to the Santa Fe Environmental Bureau office and provide a copy to the appropriate NMOCD District Office

3804

Pit, Closed-Loop System, Below-Grade Tank, or
Proposed Alternative Method Permit or Closure Plan Application

- Type of action:
- ☐ Permit of a pit, closed-loop system, below-grade tank, or proposed alternative method
 - ☐ Closure of a pit, closed-loop system, below-grade tank, or proposed alternative method
 - ☐ Modification to an existing permit
 - ☒ Closure plan only submitted for an existing permitted or non-permitted pit, closed-loop system, below-grade tank, or proposed alternative method

Instructions: Please submit one application (Form C-144) per individual pit, closed-loop system, below-grade tank or alternative request

Please be advised that approval of this request does not relieve the operator of liability should operations result in pollution of surface water, ground water or the environment. Nor does approval relieve the operator of its responsibility to comply with any other applicable governmental authority's rules, regulations or ordinances.

1	
Operator: <u>Burlington Resources Oil & Gas Company, LP</u>	OGRID#: <u>14538</u>
Address: <u>PO Box 4289, Farmington, NM 87499</u>	
Facility or well name: <u>SAN JUAN 27-5 UNIT 903, 906 & 907</u>	
API Number: <u>30-039-30299, 3039-30305, 30-039-30302</u>	OCD Permit Number: _____
U/L or Qtr/Qtr: <u>G(SW/NE)</u> Section: <u>8</u> Township: <u>27N</u> Range: <u>5W</u> County: <u>Rio Arriba</u>	
Center of Proposed Design: Latitude: <u>36.591447 °N</u> Longitude: <u>107.379409 °W</u> NAD: <input type="checkbox"/> 1927 <input checked="" type="checkbox"/> 1983	
Surface Owner: <input checked="" type="checkbox"/> Federal <input type="checkbox"/> State <input type="checkbox"/> Private <input type="checkbox"/> Tribal Trust or Indian Allotment	

2	
<input checked="" type="checkbox"/> Pit: Subsection F or G of 19.15.17.11 NMAC	
Temporary: <input checked="" type="checkbox"/> Drilling <input type="checkbox"/> Workover	
<input type="checkbox"/> Permanent <input type="checkbox"/> Emergency <input type="checkbox"/> Cavitation <input type="checkbox"/> P&A	
<input checked="" type="checkbox"/> Lined <input type="checkbox"/> Unlined Liner type: _____ Thickness <u>12</u> mil <input checked="" type="checkbox"/> LLDPE <input type="checkbox"/> HDPE <input type="checkbox"/> PVC <input type="checkbox"/> Other _____	
<input checked="" type="checkbox"/> String-Reinforced	
Liner Seams <input checked="" type="checkbox"/> Welded <input checked="" type="checkbox"/> Factory <input type="checkbox"/> Other _____ Volume: <u>4400</u> bbl Dimensions L <u>65'</u> x W <u>45'</u> x D <u>10'</u>	

3	
<input type="checkbox"/> Closed-loop System: Subsection H of 19.15.17.11 NMAC	
Type of Operation: <input type="checkbox"/> P&A <input type="checkbox"/> Drilling a new well <input type="checkbox"/> Workover or Drilling (Applies to activities which require prior approval of a permit or notice of intent)	
<input type="checkbox"/> Drying Pad <input type="checkbox"/> Above Ground Steel Tanks <input type="checkbox"/> Haul-off Bins <input type="checkbox"/> Other _____	
<input type="checkbox"/> Lined <input type="checkbox"/> Unlined Liner type: _____ Thickness _____ mil <input type="checkbox"/> LLDPE <input type="checkbox"/> HDPE <input type="checkbox"/> PVD <input type="checkbox"/> Other _____	
Liner Seams: <input type="checkbox"/> Welded <input type="checkbox"/> Factory <input type="checkbox"/> Other _____	

4	
<input type="checkbox"/> Below-grade tank: Subsection I of 19.15.17.11 NMAC	
Volume: _____ bbl	Type of fluid: _____
Tank Construction material _____	
<input type="checkbox"/> Secondary containment with leak detection <input type="checkbox"/> Visible sidewalls, liner, 6-inch lift and automatic overflow shut-off	
<input type="checkbox"/> Visible sidewalls and liner <input type="checkbox"/> Visible sidewalls only <input type="checkbox"/> Other _____	
Liner Type _____	Thickness _____ mil <input type="checkbox"/> HDPE <input type="checkbox"/> PVC <input type="checkbox"/> Other _____

5	
<input type="checkbox"/> Alternative Method:	
Submittal of an exception request is required. Exceptions must be submitted to the Santa Fe Environmental Bureau office for consideration of approval.	



6

Fencing: Subsection D of 19.15.17.11 NMAC (*Applies to permanent pit, temporary pits, and below-grade tanks*)

- ☐ Chain link, six feet in height, two strands of barbed wire at top (*Required if located within 1000 feet of a permanent residence, school, hospital, institution or church*)
- ☐ Four foot height, four strands of barbed wire evenly spaced between one and four feet
- ☒ Alternate. Please specify 4' hogwire fence with a single strand of barbed wire on top.

7

Netting: Subsection E of 19.15.17.11 NMAC (*Applies to permanent pits and permanent open top tanks*)

- ☐ Screen ☐ Netting ☐ Other _____
- ☐ Monthly inspections (*If netting or screening is not physically feasible*)

8

Signs: Subsection C of 19.15.17.11 NMAC

- ☐ 12" X 24", 2" lettering, providing Operator's name, site location, and emergency telephone numbers
- ☒ Signed in compliance with 19.15.3.103 NMAC

9

Administrative Approvals and Exceptions:

Justifications and/or demonstrations of equivalency are required. Please refer to 19.15.17 NMAC for guidance

Please check a box if one or more of the following is requested, if not leave blank:

- ☐ Administrative approval(s): Requests must be submitted to the appropriate division district of the Santa Fe Environmental Bureau office for consideration of approval. (**Fencing/BGT Liner**)
- ☐ Exception(s): Requests must be submitted to the Santa Fe Environmental Bureau office for consideration of approval.

10

Siting Criteria (regarding permitting): 19.15.17.10 NMAC

Instructions: The applicant must demonstrate compliance for each siting criteria below in the application. Recommendations of acceptable source material are provided below. Requests regarding changes to certain siting criteria may require administrative approval from the appropriate district office or may be considered an exception which must be submitted to the Santa Fe Environmental Bureau Office for consideration of approval. Applicant must attach justification for request. Please refer to 19.15.17.10 NMAC for guidance. Siting criteria does not apply to drying pads or above grade-tanks associated with a closed-loop system.

Ground water is less than 50 feet below the bottom of the temporary pit, permanent pit, or below-grade tank.

- NM Office of the State Engineer - iWATERS database search; USGS; Data obtained from nearby wells

☐ Yes ☐ No

Within 300 feet of a continuously flowing watercourse, or 200 feet of any other watercourse, lakebed, sinkhole, or playa lake (measured from the ordinary high-water mark).

- Topographic map; Visual inspection (certification) of the proposed site

☐ Yes ☐ No

Within 300 feet from a permanent residence, school, hospital, institution, or church in existence at the time of initial application.

(Applies to temporary, emergency, or cavitation pits and below-grade tanks)

- Visual inspection (certification) of the proposed site; Aerial photo; Satellite image

☐ Yes ☐ No

☐ NA

Within 1000 feet from a permanent residence, school, hospital, institution, or church in existence at the time of initial application.

(Applied to permanent pits)

- Visual inspection (certification) of the proposed site; Aerial photo; Satellite image

☐ Yes ☐ No

☐ NA

Within 500 horizontal feet of a private, domestic fresh water well or spring that less than five households use for domestic or stock watering purposes, or within 1000 horizontal feet of any other fresh water well or spring, in existence at the time of initial application.

- NM Office of the State Engineer - iWATERS database search; Visual inspection (certification) of the proposed site.

☐ Yes ☐ No

Within incorporated municipal boundaries or within a defined municipal fresh water well field covered under a municipal ordinance adopted pursuant to NMSA 1978, Section 3-27-3, as amended

- Written confirmation or verification from the municipality; Written approval obtained from the municipality

☐ Yes ☐ No

Within 500 feet of a wetland.

- US Fish and Wildlife Wetland Identification map; Topographic map; Visual inspection (certification) of the proposed site

☐ Yes ☐ No

Within the area overlying a subsurface mine.

- Written confirmation or verification or map from the NM EMNRD - Mining and Mineral Division

☐ Yes ☐ No

Within an unstable area.

- Engineering measures incorporated into the design; NM Bureau of Geology & Mineral Resources; USGS; NM Geological Society; Topographic map

☐ Yes ☐ No

Within a 100-year floodplain

- FEMA map

☐ Yes ☐ No

11
Temporary Pits, Emergency Pits and Below-grade Tanks Permit Application Attachment Checklist: Subsection B of 19.15.17.9 NMAC
Instructions: Each of the following items must be attached to the application. Please indicate, by a check mark in the box, that the documents are attached.

- ☐ Hydrogeologic Report (Below-grade Tanks) - based upon the requirements of Paragraph (4) of Subsection B of 19.15.17.9 NMAC
- ☐ Hydrogeologic Data (Temporary and Emergency Pits) - based upon the requirements of Paragraph (2) of Subsection B of 19.15.17.9
- ☐ Siting Criteria Compliance Demonstrations - based upon the appropriate requirements of 19.15.17.10 NMAC
- ☐ Design Plan - based upon the appropriate requirements of 19.15.17.11 NMAC
- ☐ Operating and Maintenance Plan - based upon the appropriate requirements of 19.15.17.12 NMAC
- ☐ Closure Plan (Please complete Boxes 14 through 18, if applicable) - based upon the appropriate requirements of Subsection C of 19.15.17.9 NMAC and 19.15.17.13 NMAC
- ☐ Previously Approved Design (attach copy of design) API _____ or Permit _____

12
Closed-loop Systems Permit Application Attachment Checklist: Subsection B of 19.15.17.9 NMAC
Instructions: Each of the following items must be attached to the application. Please indicate, by a check mark in the box, that the documents are attached.

- ☐ Geologic and Hydrogeologic Data (only for on-site closure) - based upon the requirements of Paragraph (3) of Subsection B of 19.15.17.9
- ☐ Siting Criteria Compliance Demonstrations (only for on-site closure) - based upon the appropriate requirements of 19.15.17.10 NMAC
- ☐ Design Plan - based upon the appropriate requirements of 19.15.17.11 NMAC
- ☐ Operating and Maintenance Plan - based upon the appropriate requirements of 19.15.17.12 NMAC
- ☐ Closure Plan (Please complete Boxes 14 through 18, if applicable) - based upon the appropriate requirements of Subsection C of 19.15.17.9 NMAC and 19.15.17.13 NMAC
- ☐ Previously Approved Design (attach copy of design) API _____
- ☐ Previously Approved Operating and Maintenance Plan API _____

13
Permanent Pits Permit Application Checklist: Subsection B of 19.15.17.9 NMAC
Instructions: Each of the following items must be attached to the application. Please indicate, by a check mark in the box, that the documents are attached.

- ☐ Hydrogeologic Report - based upon the requirements of Paragraph (1) of Subsection B of 19.15.17.9 NMAC
- ☐ Siting Criteria Compliance Demonstrations - based upon the appropriate requirements of 19.15.17.10 NMAC
- ☐ Climatological Factors Assessment
- ☐ Certified Engineering Design Plans - based upon the appropriate requirements of 19.15.17.11 NMAC
- ☐ Dike Protection and Structural Integrity Design - based upon the appropriate requirements of 19.15.17.11 NMAC
- ☐ Leak Detection Design - based upon the appropriate requirements of 19.15.17.11 NMAC
- ☐ Liner Specifications and Compatibility Assessment - based upon the appropriate requirements of 19.15.17.11 NMAC
- ☐ Quality Control/Quality Assurance Construction and Installation Plan
- ☐ Operating and Maintenance Plan - based upon the appropriate requirements of 19.15.17.12 NMAC
- ☐ Freeboard and Overtopping Prevention Plan - based upon the appropriate requirements of 19.15.17.11 NMAC
- ☐ Nuisance or Hazardous Odors, including H₂S, Prevention Plan
- ☐ Emergency Response Plan
- ☐ Oil Field Waste Stream Characterization
- ☐ Monitoring and Inspection Plan
- ☐ Erosion Control Plan
- ☐ Closure Plan - based upon the appropriate requirements of Subsection C of 19.15.17.9 NMAC and 19.15.17.13 NMAC

14
Proposed Closure: 19.15.17.13 NMAC
Instructions: Please complete the applicable boxes, Boxes 14 through 18, in regards to the proposed closure plan.

Type: ☒ Drilling ☐ Workover ☐ Emergency ☒ Cavitation ☐ P&A ☐ Permanent Pit ☐ Below-grade Tank ☐ Closed-loop System
☐ Alternative

Proposed Closure Method: ☐ Waste Excavation and Removal
☐ Waste Removal (Closed-loop systems only)
☒ On-site Closure Method (only for temporary pits and closed-loop systems)
☒ In-place Burial ☐ On-site Trench
☐ Alternative Closure Method (Exceptions must be submitted to the Santa Fe Environmental Bureau for consideration)

15
Waste Excavation and Removal Closure Plan Checklist: (19.15.17.13 NMAC) *Instructions: Each of the following items must be attached to the closure plan. Please indicate, by a check mark in the box, that the documents are attached.*

- ☐ Protocols and Procedures - based upon the appropriate requirements of 19.15.17.13 NMAC
- ☐ Confirmation Sampling Plan (if applicable) - based upon the appropriate requirements of Subsection F of 19.15.17.13 NMAC
- ☐ Disposal Facility Name and Permit Number (for liquids, drilling fluids and drill cuttings)
- ☐ Soil Backfill and Cover Design Specifications - based upon the appropriate requirements of Subsection H of 19.15.17.13 NMAC
- ☐ Re-vegetation Plan - based upon the appropriate requirements of Subsection I of 19.15.17.13 NMAC
- ☐ Site Reclamation Plan - based upon the appropriate requirements of Subsection G of 19.15.17.13 NMAC

Waste Removal Closure For Closed-loop Systems That Utilize Above Ground Steel Tanks or Haul-off Bins Only: (19.15.17.13 D NMAC)

Instructions: Please identify the facility or facilities for the disposal of liquids, drilling fluids and drill cuttings. Use attachment if more than two facilities are required.

Disposal Facility Name: _____ Disposal Facility Permit #: _____

Disposal Facility Name: _____ Disposal Facility Permit #: _____

Will any of the proposed closed-loop system operations and associated activities occur on or in areas that *will not* be used for future service and operations?

☐ Yes (If yes, please provide the information) ☐ No

Required for impacted areas which will not be used for future service and operations.

☐ Soil Backfill and Cover Design Specification - based upon the appropriate requirements of Subsection H of 19.15.17.13 NMAC

☐ Re-vegetation Plan - based upon the appropriate requirements of Subsection I of 19.15.17.13 NMAC

☐ Site Reclamation Plan - based upon the appropriate requirements of Subsection G of 19.15.17.13 NMAC

Siting Criteria (Regarding on-site closure methods only: 19.15.17.10 NMAC

Instructions: Each siting criteria requires a demonstration of compliance in the closure plan. Recommendations of acceptable source material are provided below. Requests regarding changes to certain siting criteria may require administrative approval from the appropriate district office or may be considered an exception which must be submitted to the Santa Fe Environmental Bureau office for consideration of approval. Justifications and/or demonstrations of equivalency are required. Please refer to 19.15.17.10 NMAC for guidance.

Ground water is less than 50 feet below the bottom of the buried waste.

- NM Office of the State Engineer - iWATERS database search; USGS; Data obtained from nearby wells

☐ Yes ☒ No

☐ N/A

Ground water is between 50 and 100 feet below the bottom of the buried waste

- NM Office of the State Engineer - iWATERS database search; USGS; Data obtained from nearby wells

☒ Yes ☐ No

☐ N/A

Ground water is more than 100 feet below the bottom of the buried waste.

- NM Office of the State Engineer - iWATERS database search; USGS; Data obtained from nearby wells

☐ Yes ☒ No

☐ N/A

Within 300 feet of a continuously flowing watercourse, or 200 feet of any other significant watercourse or lakebed, sinkhole, or playa lake (measured from the ordinary high-water mark).

- Topographic map; Visual inspection (certification) of the proposed site

☐ Yes ☒ No

Within 300 feet from a permanent residence, school, hospital, institution, or church in existence at the time of initial application.

- Visual inspection (certification) of the proposed site, Aerial photo; satellite image

☐ Yes ☒ No

☐ Yes ☒ No

Within 500 horizontal feet of a private, domestic fresh water well or spring that less than five households use for domestic or stock watering purposes, or within 1000 horizontal feet of any other fresh water well or spring, in existence at the time of the initial application.

- NM Office of the State Engineer - iWATERS database; Visual inspection (certification) of the proposed site

Within incorporated municipal boundaries or within a defined municipal fresh water well field covered under a municipal ordinance adopted pursuant to NMSA 1978, Section 3-27-3, as amended.

- Written confirmation or verification from the municipality; Written approval obtained from the municipality

☐ Yes ☒ No

Within 500 feet of a wetland

- US Fish and Wildlife Wetland Identification map; Topographic map; Visual inspection (certification) of the proposed site

☐ Yes ☒ No

Within the area overlying a subsurface mine.

- Written confirmation or verification or map from the NM EMNRD-Mining and Mineral Division

☐ Yes ☒ No

Within an unstable area

- Engineering measures incorporated into the design; NM Bureau of Geology & Mineral Resources; USGS; NM Geological Society; Topographic map

☐ Yes ☒ No

Within a 100-year floodplain.

- FEMA map

☐ Yes ☒ No

On-Site Closure Plan Checklist: (19.15.17.13 NMAC) *Instructions: Each of the following items must be attached to the closure plan. Please indicate, by a check mark in the box, that the documents are attached.*

☒ Siting Criteria Compliance Demonstrations - based upon the appropriate requirements of 19.15.17.10 NMAC

☒ Proof of Surface Owner Notice - based upon the appropriate requirements of Subsection F of 19.15.17.13 NMAC

☐ Construction/Design Plan of Burial Trench (if applicable) based upon the appropriate requirements of 19.15.17.11 NMAC

☐ Construction/Design Plan of Temporary Pit (for in place burial of a drying pad) - based upon the appropriate requirements of 19.15.17.11 NMAC

☒ Protocols and Procedures - based upon the appropriate requirements of 19.15.17.13 NMAC

☐ Confirmation Sampling Plan (if applicable) - based upon the appropriate requirements of Subsection F of 19.15.17.13 NMAC

☒ Waste Material Sampling Plan - based upon the appropriate requirements of Subsection F of 19.15.17.13 NMAC

☒ Disposal Facility Name and Permit Number (for liquids, drilling fluids and drill cuttings or in case on-site closure standards cannot be achieved)

☒ Soil Cover Design - based upon the appropriate requirements of Subsection H of 19.15.17.13 NMAC

☒ Re-vegetation Plan - based upon the appropriate requirements of Subsection I of 19.15.17.13 NMAC

☒ Site Reclamation Plan - based upon the appropriate requirements of Subsection G of 19.15.17.13 NMAC

19

Operator Application Certification:

I hereby certify that the information submitted with this application is true, accurate and complete to the best of my knowledge and belief

Name (Print): Crystal Tafoya Title: Regulatory Technician
 Signature: *Crystal Tafoya* Date: 7/31/2009
 e-mail address: crystal.tafoya@conocophillips.com Telephone: 505-326-9837

20

OCD Approval: ☒ Permit Application (including closure plan) ☐ Closure Plan (only) ☐ OCD Conditions (see attachment)

OCD Representative Signature: *Brian Rell* Approval Date: 8-17-09

Title: Enviro/Spec OCD Permit Number: _____

21

Closure Report (required within 60 days of closure completion): Subsection K of 19 15 17 13 NMAC

Instructions: Operators are required to obtain an approved closure plan prior to implementing any closure activities and submitting the closure report. The closure report is required to be submitted to the division within 60 days of the completion of the closure activities. Please do not complete this section of the form until an approved closure plan has been obtained and the closure activities have been completed.

☐ Closure Completion Date: _____

22

Closure Method:

- ☐ Waste Excavation and Removal ☐ On-site Closure Method ☐ Alternative Closure Method ☐ Waste Removal (Closed-loop systems only)
☐ If different from approved plan, please explain.

23

Closure Report Regarding Waste Removal Closure For Closed-loop Systems That Utilize Above Ground Steel Tanks or Haul-off Bins Only:

Instructions: Please identify the facility or facilities for where the liquids, drilling fluids and drill cuttings were disposed. Use attachment if more than two facilities were utilized.

Disposal Facility Name: _____ Disposal Facility Permit Number: _____

Disposal Facility Name: _____ Disposal Facility Permit Number: _____

Were the closed-loop system operations and associated activities performed on or in areas that will not be used for future service and operations?

- ☐ Yes (If yes, please demonstrate compliance to the items below) ☐ No

Required for impacted areas which will not be used for future service and operations:

- ☐ Site Reclamation (Photo Documentation)
☐ Soil Backfilling and Cover Installation
☐ Re-vegetation Application Rates and Seeding Technique

24

Closure Report Attachment Checklist: Instructions: Each of the following items must be attached to the closure report. Please indicate, by a check mark in the box, that the documents are attached.

- ☐ Proof of Closure Notice (surface owner and division)
☐ Proof of Deed Notice (required for on-site closure)
☐ Plot Plan (for on-site closures and temporary pits)
☐ Confirmation Sampling Analytical Results (if applicable)
☐ Waste Material Sampling Analytical Results (if applicable)
☐ Disposal Facility Name and Permit Number
☐ Soil Backfilling and Cover Installation
☐ Re-vegetation Application Rates and Seeding Technique
☐ Site Reclamation (Photo Documentation)

On-site Closure Location. Latitude: _____ Longitude: _____ NAD ☐ 1927 ☐ 1983

25

Operator Closure Certification:

I hereby certify that the information and attachments submitted with this closure report is true, accurate and complete to the best of my knowledge and belief. I also certify that the closure complies with all applicable closure requirements and conditions specified in the approved closure plan.

Name (Print): _____ Title: _____

Signature: _____ Date: _____

e-mail address: _____ Telephone: _____



New Mexico Office of the State Engineer Water Column/Average Depth to Water

(quarters are 1=NW 2=NE 3=SW 4=SE)

(quarters are smallest to largest) (NAD83 UTM in meters) (In feet)

POD Number	Sub	basin	Use	County	Q	Q	Q	Sec	Tws	Rng	X	Y	Depth	Depth	Water
SJ 00046		IND		RA	4	4	04	27N	05W	289133	4052788*	506	260	246	

Average Depth to Water: **260 feet**

Minimum Depth: **260 feet**

Maximum Depth: **260 feet**

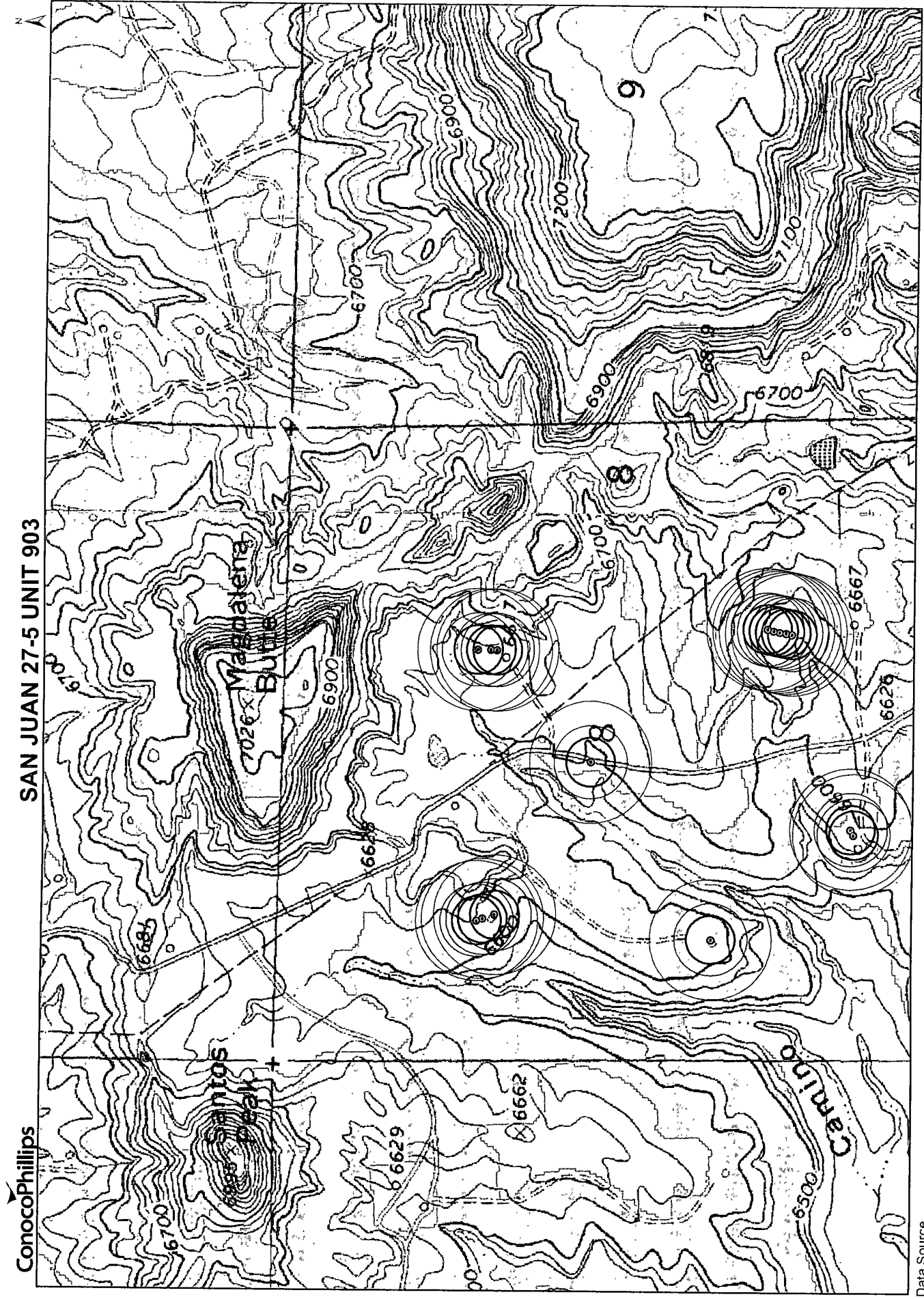
Record Count: 1

PLSS Search:

Section(s): 4, 5, 6, 7, 8, 9, 16, 17, 18 Township: 27N Range: 05W

*UTM location was derived from PLSS - see Help

The data is furnished by the NMOSE/ISC and is accepted by the recipient with the expressed understanding that the OSE/ISC make no warranties, expressed or implied, concerning the accuracy, completeness, reliability, usability, or suitability for any particular purpose of the data.



ConocoPhillips

SAN JUAN 27-5 UNIT 903

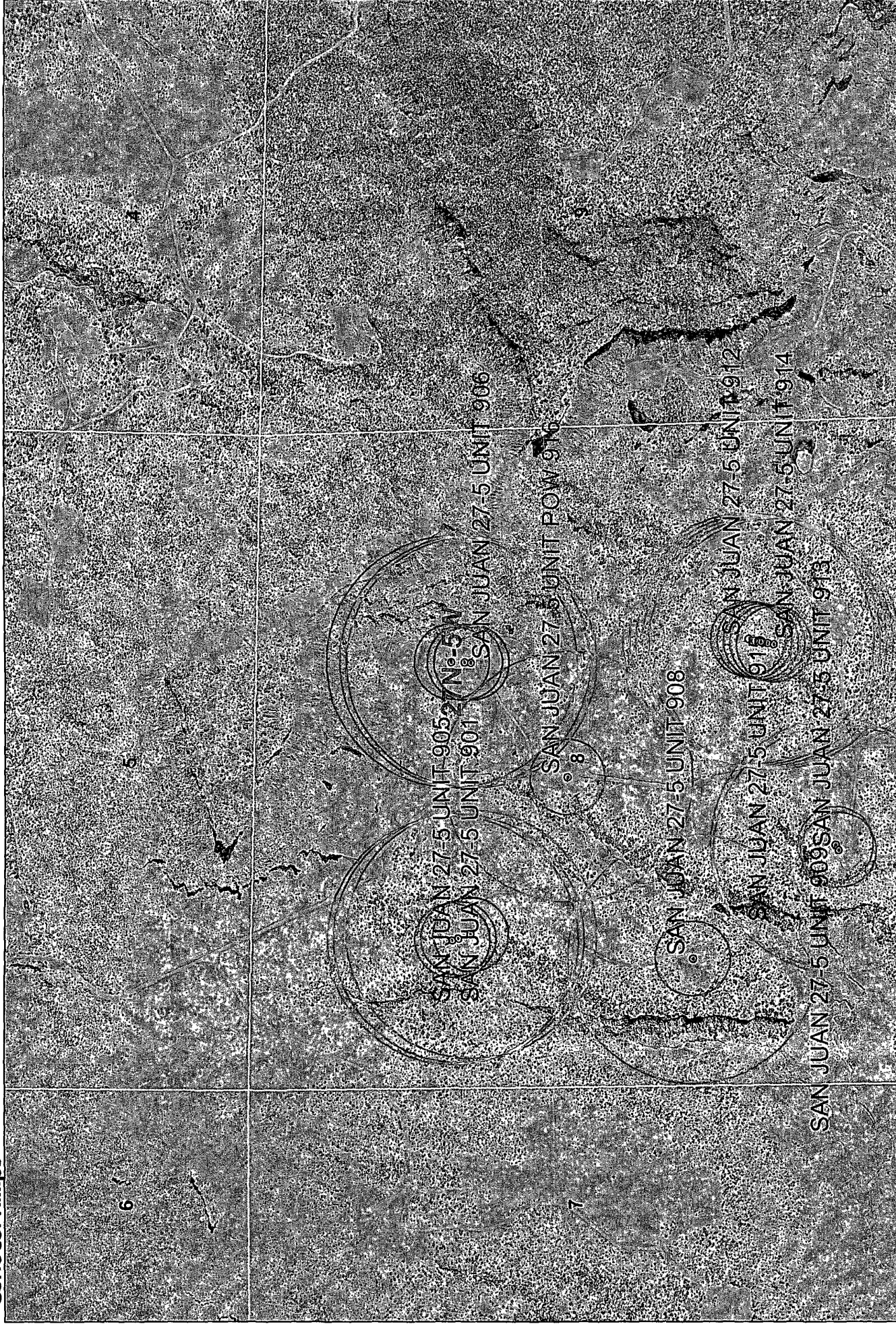
Data Source
 Aerial flown locally Sedgewick in 2005.
 Wetlands Data Acquired from U.S. Fish and Wildlife [Http://wetlands.wms.er.usgs.gov](http://wetlands.wms.er.usgs.gov)
 USGS Topo

Legend

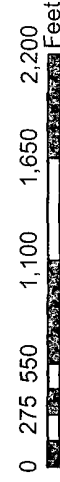
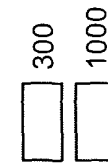
	Wetlands		COPCathodic		iWaters
	City Limits		300		500
			200		

Scale
 1:12,000

Metadata
 NAD_1983_SP
 NM West_FIPS_3003
 Sep 22, 2008

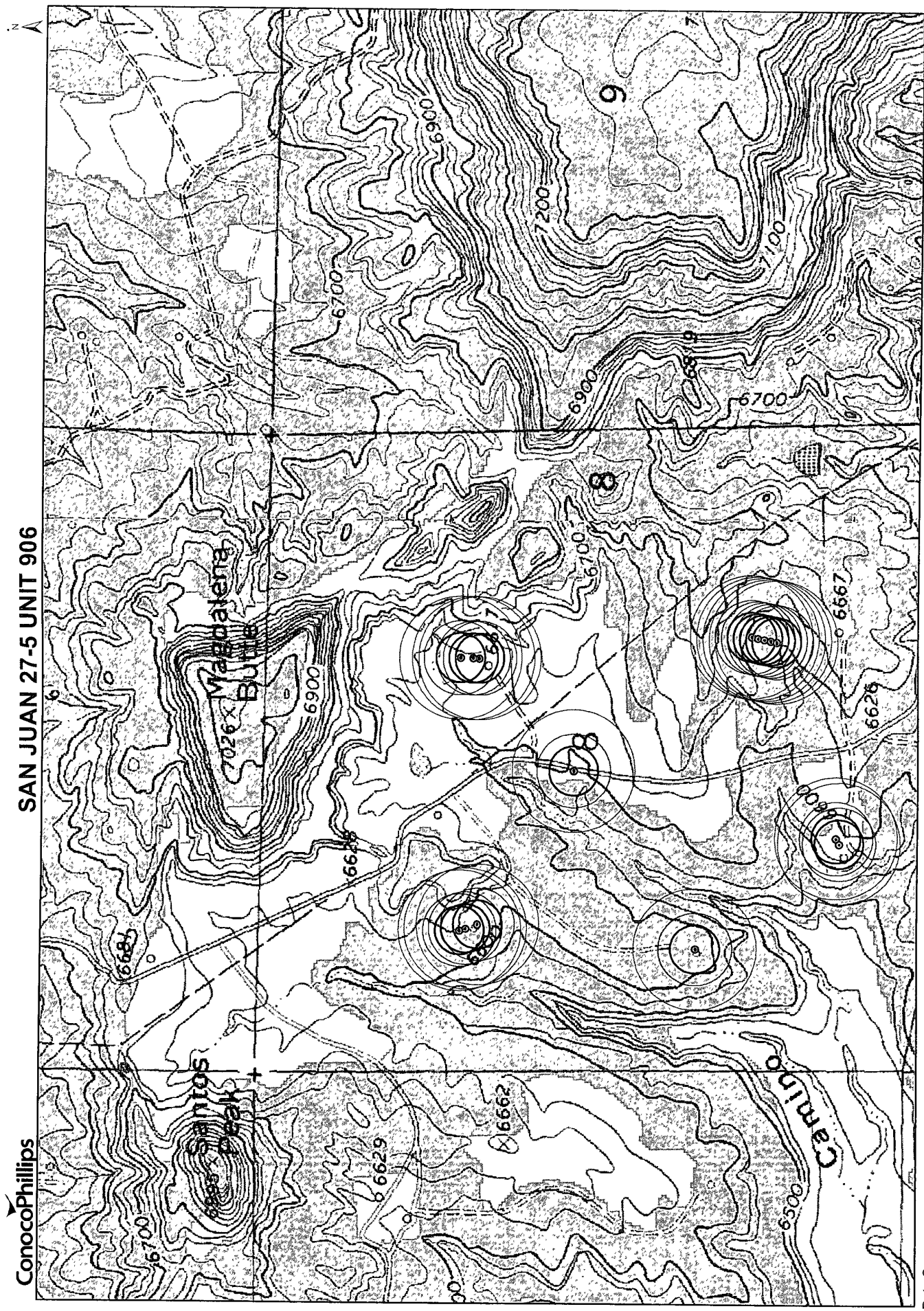


Data Source
Aerial flown locally Sedgewick in 2005.
Wetlands Data Acquired from U.S. Fish
and Wildlife [Http://wetlandswms.er.usgs.gov](http://wetlandswms.er.usgs.gov)
USGS Topo



1:12,000

NAD_1983_SP
NM West_FIPS_
3003
Sep 23, 2008



ConocoPhillips

SAN JUAN 27-5 UNIT 906

Data Source
 Aerial flown locally Sedgewick in 2005.
 Wetlands Data Acquired from U.S. Fish and Wildlife <http://wetlands.fws.gov>
 USGS Topo

Legend

	Wetlands
	City Limits
	COPCathodic
	iWaters
	300
	500
	200

Scale
 1:12,000

Metadata
 NAD_1983_SP
 NM West_FIPS_3003
 Sep 22, 2008



Data Source
Aerial flown locally Sedgewick in 2005.
Wetlands Data Acquired from U S Fish
and Wildlife Http://wetlandswms.er.usgs.gov
USGS Topo

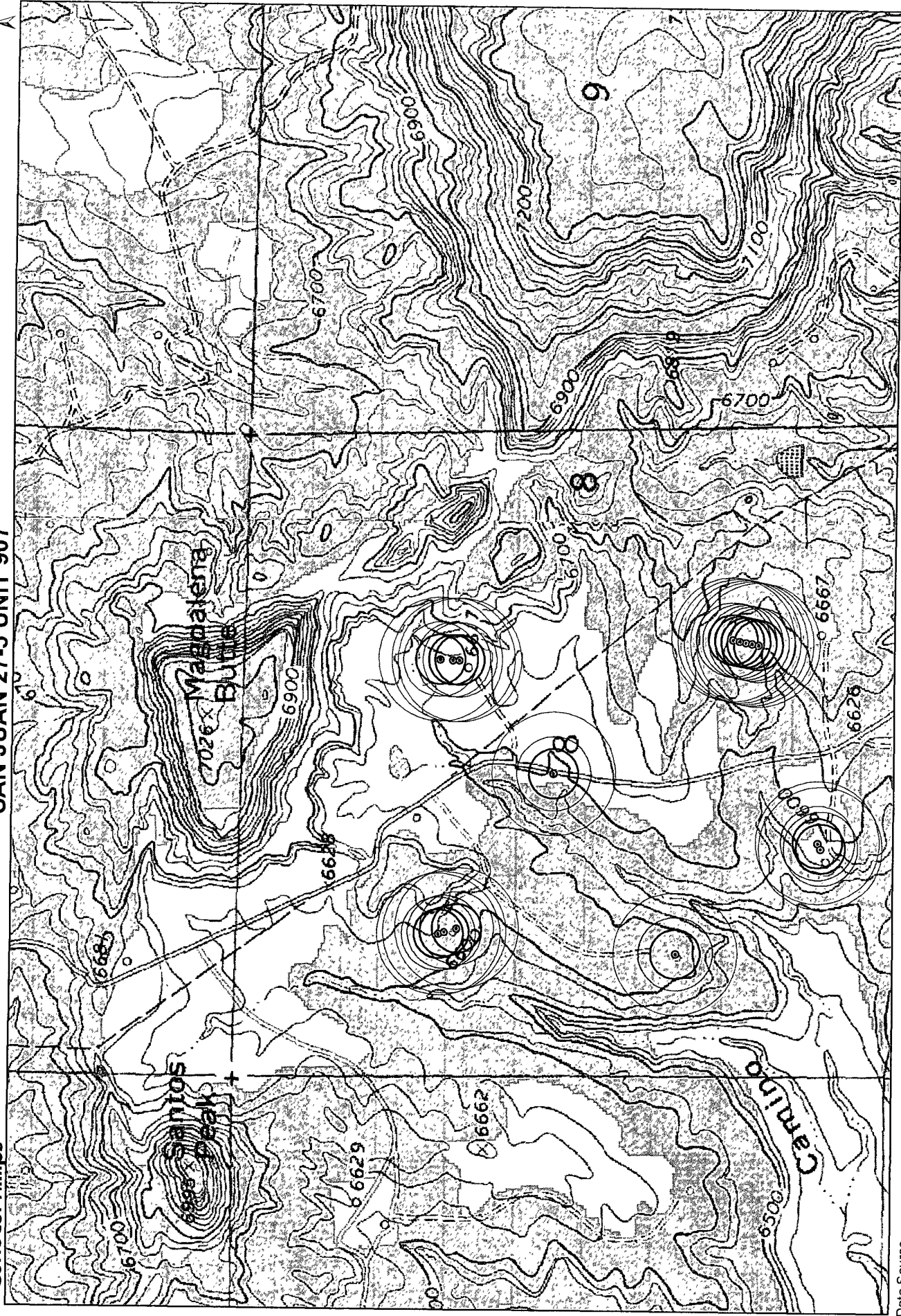
300
1000

Wetlands
City Limits

0 275 550 1,100 1,650 2,200 Feet

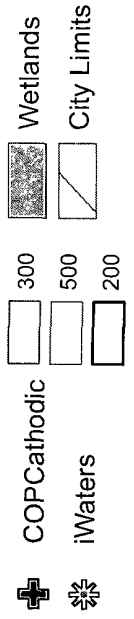
1:12,000

NAD 1983 SP
NM West FLPS
3003
Sep 23, 2008



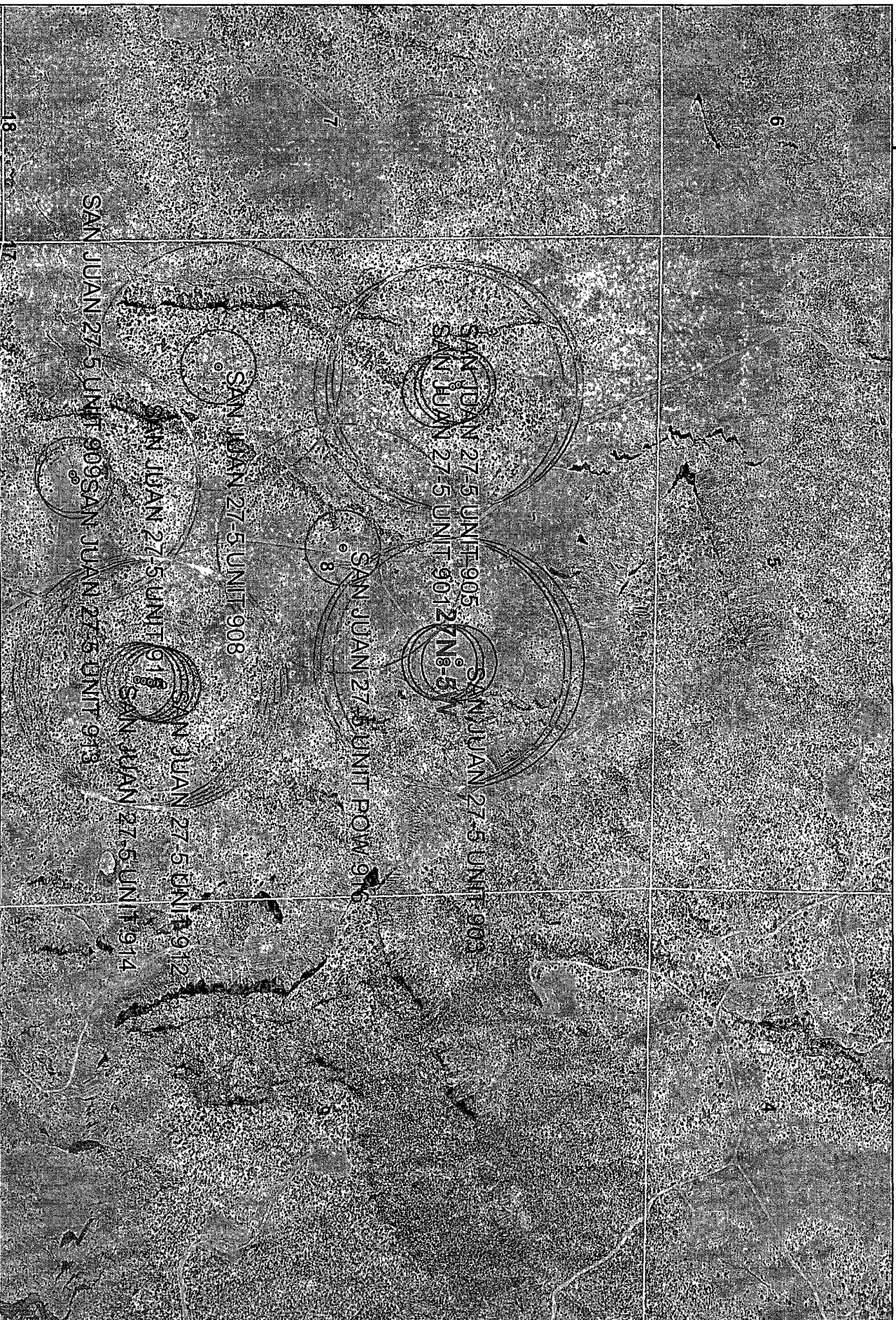
Data Source

Aerial flown locally Sedgewick in 2005
Wetlands Data Acquired from U.S. Fish
and Wildlife Htp://wetlands.wms.er.usgs.gov
USGS Topo



NAD_1983_SP-
NM West_FIPS-
3003
Sep 22, 2008

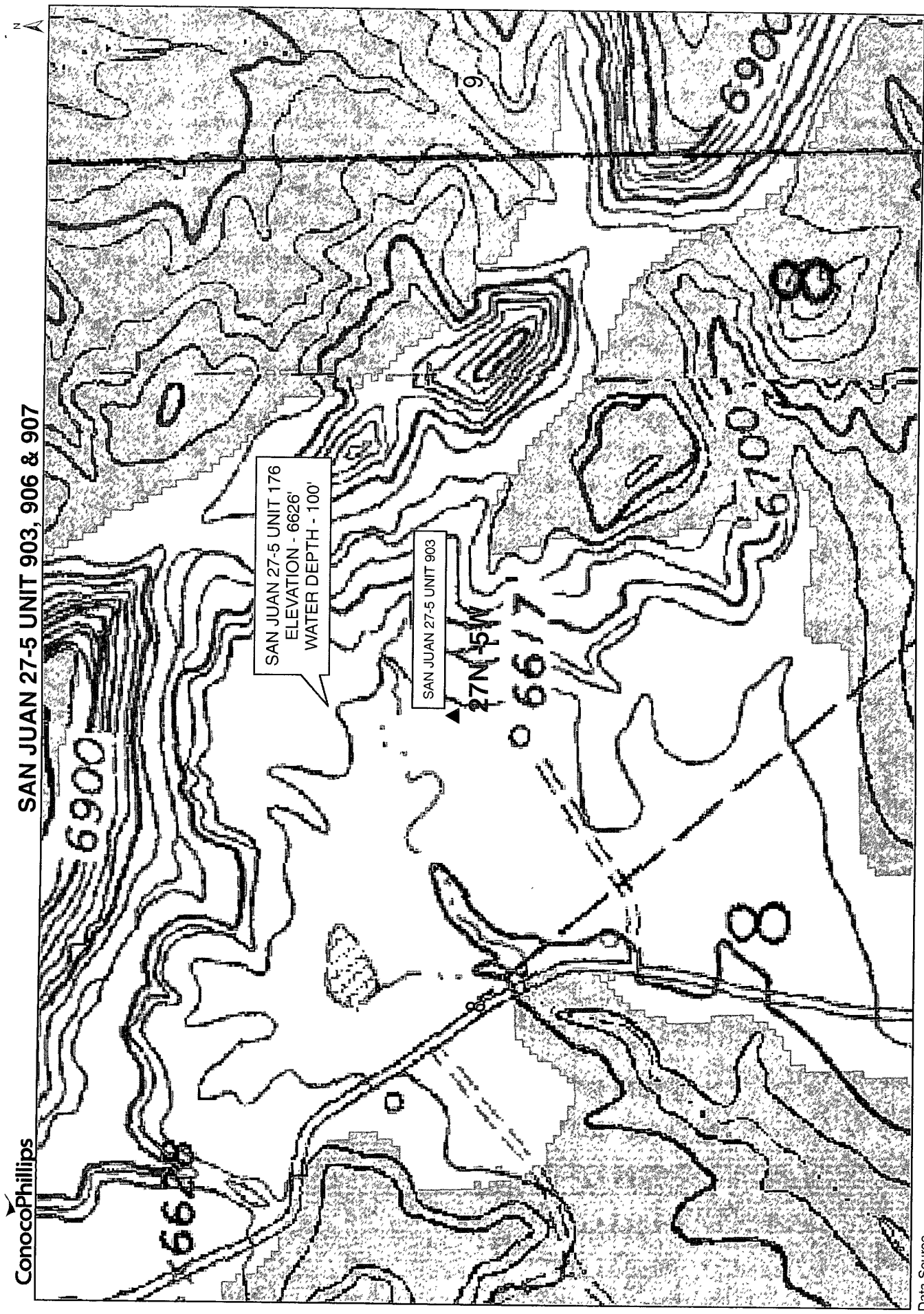
1:12,000



Data Source
Aerial flown locally Sedgewick in 2005
Wetlands Data Acquired from U.S. Fish
and Wildlife Http://wetlands.wms.er.usgs.gov
USGS Topo



NAD_1983_SP_3003
NM West_FIPS_3003
Sep 23, 2008



ConocoPhillips

SAN JUAN 27-5 UNIT 903, 906 & 907

Data Source

Aerial flown locally Sedgewick in 2005.
Wetlands Data Acquired from U.S. Fish
and Wildlife [Http://wetlands.wrms.er.usgs.gov](http://wetlands.wrms.er.usgs.gov)
USGS Topo

☒ City Limits

☐ Ground Water

Buffers
☐ 200ft ☐ 500ft

0 600 1,200 Feet
NAD_1983
NMN
3003
1:4,857
Aug 26, 2008

70-30-039-07131
DATA SHEET FOR DEEP GROUND BED CATHODIC PROTECTION WELLS
NORTHWESTERN NEW MEXICO

176-30-039-20812

Operator MERIDIAN OIL CO. Location: Unit G Sec. 8 Twp. 27 Rng. 5

Name of Well/Wells or Pipeline Serviced SAN JUAN 27-5 # 70 & 176

Elevation _____ Completion Date 10/2/90 Total Depth 360 Land Type _____

Casing Strings, Sizes, Types & Depths 20 ft. 8" PVC Casing

If Casing Strings are cemented, show amounts & types used _____

If Cement or Bentonite Plugs have been placed, show depths & amounts used _____

Depths & thickness of water zones with description of water: Fresh, Clear,
Salty, Sulphur, Etc. Water at 100 ft. got a water sample

Depths gas encountered: _____

Ground bed depth with type & amount of coke breeze used: _____

355 ft. with 5500 lbs Ashbury Petroleum Coke

Depths anodes placed: 335, 305, 295, 285, 275, 215, 205, 195, 170, 160

Depths vent pipes placed: 360 ft.

Vent pipe perforations: 260 ft. perforated

Remarks: _____

If any of the above data is unavailable, please indicate so. Copies of all logs, including Drillers Log, Water Analyses & Well Bore Schematics should be submitted when available. Unplugged abandoned wells are to be included.

Land Type may be shown: F-Federal; I-Indian; S-State; P-Fee.
If Federal or Indian, add Lease Number.

UNITED STATES
DEPARTMENT OF THE INTERIOR
GEOLOGICAL SURVEY

SUBMIT IN DUPLICATE*

(See other instructions on reverse side)

Form approved.
Budget Bureau No. 42-R355.5.

5. LEASE DESIGNATION AND SERIAL NO.
SF079391

6. IF INDIAN, ALLOTTEE OR TRIBE NAME

7. UNIT AGREEMENT NAME
San Juan 27-5 Unit

8. FARM OR LEASE NAME
San Juan 27-5 Unit

9. WELL NO.
176

10. FIELD AND POOL, OR WILDCAT
Tapacito P. C.

11. SEC., T., R., M., OR BLOCK AND SURVEY OR AREA
Sec. 8, T-27-N, R-5-W
N.M.P.M.

12. COUNTY OR PARISH
Rio Arriba

13. STATE
New Mexico

WELL COMPLETION OR RECOMPLETION REPORT AND LOG *

1a. TYPE OF WELL: OIL WELL ☐ GAS WELL ☒ DRY ☐ Other _____

b. TYPE OF COMPLETION:
NEW WELL ☒ WORK OVER ☐ DEEP-EN ☐ PLUG BACK ☐ DIFF. RESVR. ☐ Other _____

2. NAME OF OPERATOR
El Paso Natural Gas Company

3. ADDRESS OF OPERATOR
P. O. Box 990, Farmington, NM 87401

4. LOCATION OF WELL (Report location clearly and in accordance with any State requirements)*
At surface 1170'N, 1800'E
At top prod. interval reported below
At total depth

14. PERMIT NO. DATE ISSUED

15. DATE STUDDERED 3-5-74 16. DATE T.D. REACHED 3-16-74 17. DATE COMPL. (Ready to prod.) 7-23-74 18. ELEVATIONS (DF, RKB, RT, GR, ETC.)* 6626' GL 19. ELEV. CASINGHEAD

20. TOTAL DEPTH, MD & TVD 3558' 21. PLUG, BACK T.D., MD & TVD 3548 22. IF MULTIPLE COMPL., HOW MANY? 23. INTERVALS DRILLED BY 0-3558 ROTARY TOOLS CABLE TOOLS

24. PRODUCING INTERVAL(S), OF THIS COMPLETION—TOP, BOTTOM, NAME (MD AND TVD)* 3436-3484 (PC) 25. WAS DIRECTIONAL SURVEY MADE No

26. TYPE ELECTRIC AND OTHER LOGS RUN IES, FDC-GR: Temp. Survey 27. WAS WELL CORED No

28. CASING RECORD (Report all strings set in well)

CASING SIZE	WEIGHT, LB./FT.	DEPTH SET (MD)	HOLE SIZE	CEMENTING RECORD	AMOUNT PULLED
8 5/8"	24#	116' GL	12 1/4"	106 cu. ft.	
2 7/8"	6.4#	3558'	6 3/4"	209 cu. ft.	

29. LINER RECORD

SIZE	TOP (MD)	BOTTOM (MD)	SACKS CEMENT*	SCREEN (MD)

30. TUBING RECORD

SIZE	DEPTH SET (MD)	PACKER SET (MD)
Tubingless Comp.		

31. PERFORATION RECORD (Interval, size and number)

3436-48', 3460-84' with 24 shots per zone.

32. ACID, SHOT, FRACTURE, CEMENT SQUEEZE, ETC.

DEPTH INTERVAL (MD)	AMOUNT AND KIND OF MATERIAL USED
3436-3484'	50,000# sand, 50,526 gal wtr

33.* PRODUCTION

DATE FIRST PRODUCTION		PRODUCTION METHOD (Flowing, gas lift, pumping—size and type of pump)				WELL STATUS (Producing or shut-in)	
		Flowing				Shut-in	
DATE OF TEST	HOURS TESTED	CHOKE SIZE	PROD'N. FOR TEST PERIOD	OIL—BBL.	GAS—MCF.	WATER—BBL.	GAS-OIL RATIO
7-23-74	3 hours	3/4"					
FLOW. TUBING PRESS.	CASING PRESSURE	CALCULATED 24-HOUR RATE	OIL—BBL.	GAS—MCF.	WATER—BBL.	OIL GRAVITY-API (CORR.)	
	SI 1094			2281 MCF/D AOF			

34. DISPOSITION OF GAS (Sold, used for fuel, vented, etc.)

35. LIST OF ATTACHMENTS

36. I hereby certify that the foregoing and attached information is complete and correct as determined from all available records

SIGNED

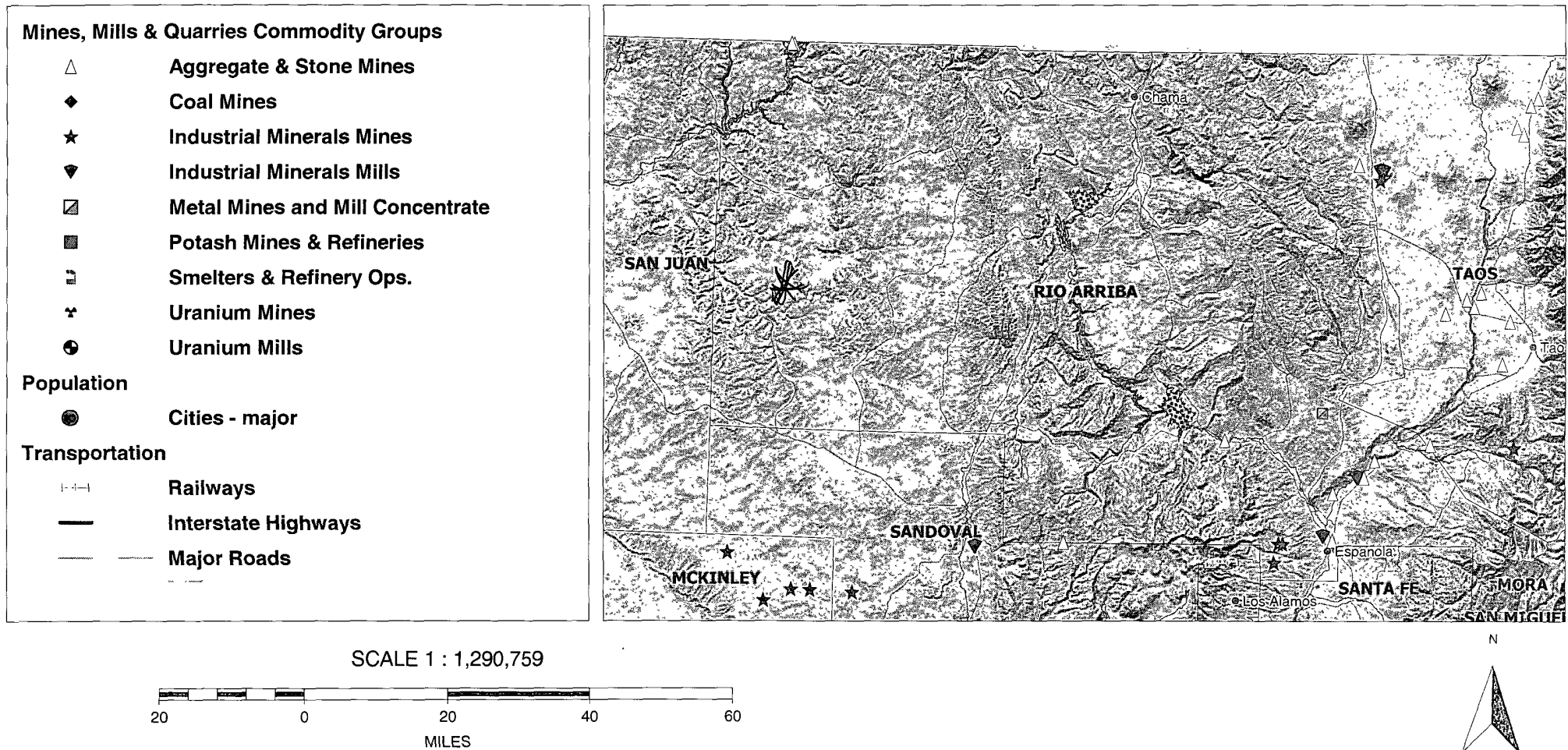
TITLE Drilling Clerk

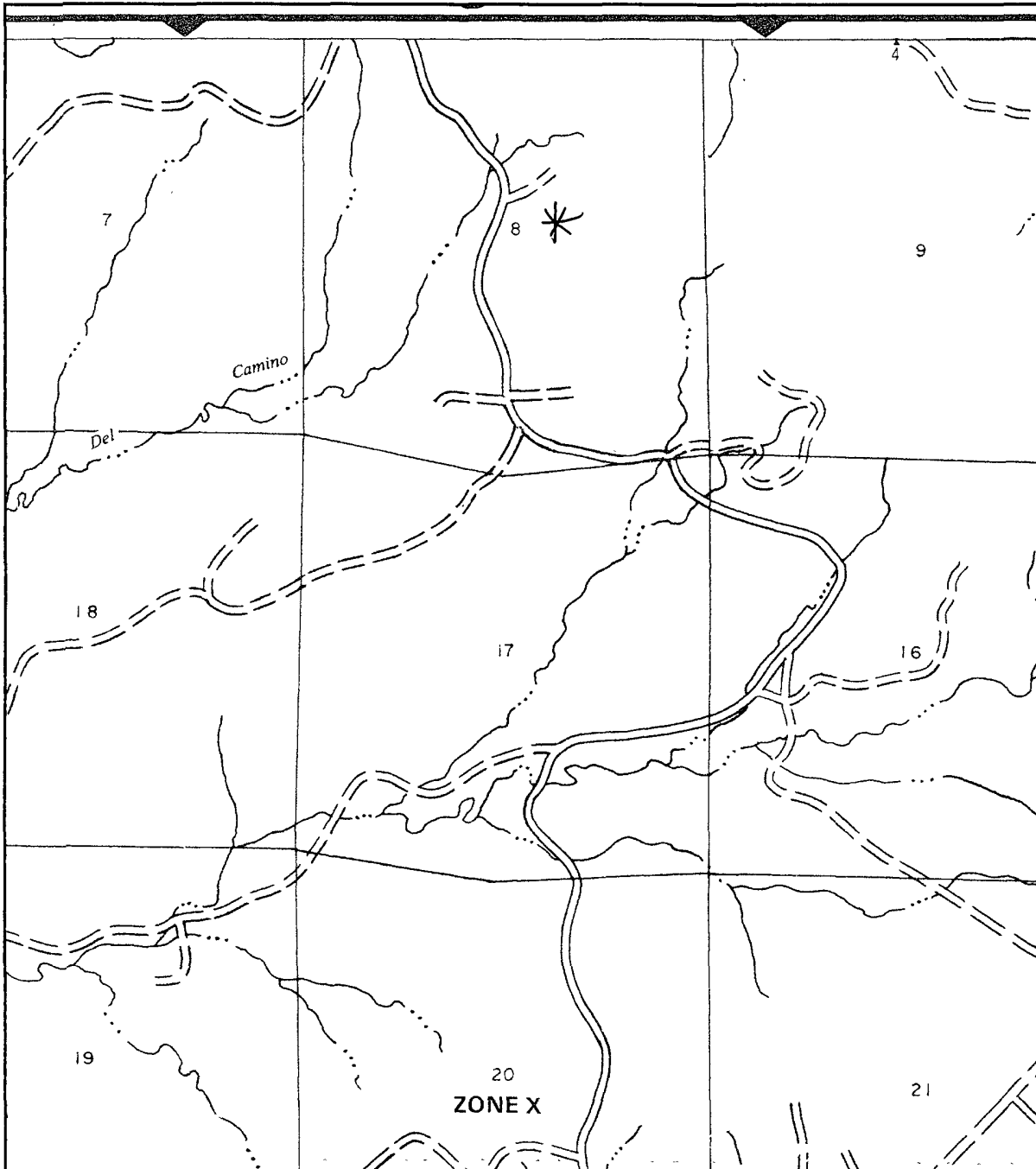
DATE

July 30, 1974

(See Instructions and Spaces for Additional Data on Reverse Side)

SAN JUAN 27-5 UNIT 903, 906 & 907 MINES, MILLS & QUARRIES MAP





APPROXIMATE SCALE

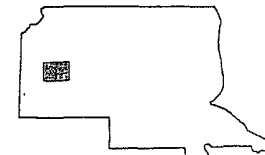
2000 0 2000 FEET

NATIONAL FLOOD INSURANCE PROGRAM

FIRM
FLOOD INSURANCE RATE MAP

**RIO ARriba COUNTY,
NEW MEXICO
UNINCORPORATED AREAS**

PANEL 550 OF 1325
(SEE MAP INDEX FOR PANELS NOT PRINTED)



PANEL LOCATION

COMMUNITY-PANEL NUMBER

350049 0550 B

EFFECTIVE DATE:

JANUARY 5, 1989



Federal Emergency Management Agency

This is an official copy of a portion of the above referenced flood map. It was extracted using F-MIT On-Line. This map does not reflect changes or amendments which may have been made subsequent to the date on the title block. For the latest product information about National Flood Insurance Program flood maps check the FEMA Flood Map Store at www.msc.fema.gov

Hydrogeological report for SAN JUAN 27-5 UNIT 903, 906 & 907

Regional Hydrogeological context:

The San Jose Formation of Eocene age occurs in New Mexico and Colorado, and its outcrop forms the land surface over much of the eastern half of the central basin. It overlies the Nacimiento Formation in the area generally south of the Colorado-New Mexico State line and overlies the Animas Formation in the area generally north of the State line.

The San Jose Formation was deposited in various fluvial-type environments. In general, the unit consists of an interbedded sequence of sandstone, siltstone, and variegated shale. Thickness of the San Jose Formation generally increases from west to east (200 feet in the west and south to almost 2,700 feet in the center of the structural basin).

Ground water is associated with alluvial and fluvial sandstone aquifers. Thus, the occurrence of ground water is mainly controlled by the distribution of sandstone in the formation. The distribution of such sandstone is the result of original depositional extent plus any post-depositional modifications, namely erosion and structural deformation. Transmissivity data for San Jose Formation are minimal. Values of 40 and 120 feet squared per day were determined from two aquifer tests (Stone et al, 1983, table 5). The reported or measured discharge from 46 water wells completed in San Jose Formation ranges from 0.15 to 61 gallons per minute and the median is 5 gallons per minute. Most of the wells provide water for livestock and domestic use.

The San Jose Formation is a very suitable unit for recharge from precipitation because soils that form on the unit are sandy and highly permeable and therefore readily adsorb precipitation. However, low annual precipitation, relatively high transpiration and evaporation rates, and deep dissection of the San Jose Formation by the San Juan River and its tributaries all tend to reduce the effective recharge to the unit.

Stone et al., 1983, Hydrogeology and Water Resources of the San Juan Basin, New Mexico: Socorro, New Mexico Bureau of Mines and Mineral Resources Hydrologic Report 6, 70 p.

Siting Criteria Compliance Demonstration & Hydro Geologic Analysis

The SAN JUAN 27-5 UNIT 903, 906 & 907 is not located in an unstable area. The location is not over a mine and is not on the side of a hill as indicated on the Mines, Mills and Quarries Map and Topographic Map. The location of the excavated pit material will not be located within 300' of any continuously flowing watercourse or 200' from any other watercourse as indicated on the Topographic Map. The location is not within a 100-year floodplain area as indicated on the FEMA Map. The Cathodic well data from the SAN JUAN 27-5 UNIT 176 has an elevation of 6626' and groundwater depth of 100'. The subject wells have an elevation of 6625' which is 107' greater than the SAN JUAN 27-5 UNIT 176, therefore the groundwater depth is greater than 80'. There are no iWATERS data points located in the area as indicated on the TOPO Map. The hydro geologic analysis indicates the groundwater depth and the San Jose formation will create a stable area for this new location.

Tafoya, Crystal

From: Tafoya, Crystal
Sent: Thursday, July 10, 2008 8:16 AM
To: 'mark_kelly@nm.blm.gov'
Subject: OCD Pit Closure Notification

The following temporary pits will be closed on-site. The new OCD Pit Rule 17 requires the surface owner be notified. Please feel free to contact me at any time if you have any questions. Thank you!

Allison Unit 2B
Allison Unit 40N
Angel Peak B 27E
Ballard 11F
Cain 725S
Canyon Largo Unit 250N
Canyon Largo Unit 279E
Canyon Largo Unit 288E
Canyon largo Unit 297E
Canyon Largo Unit 465E
Carson SRC 4E
Day B 4P
Day B 5A
East 17S
EPNG A 1B
EPNG B 1M
Federal A 1E
Filan 5M
Filan 5N
Fogelson 4 100
Fogelson 4 100S
Grambling C 202S
Hagood 19
Hamner 9S
Hardie 4P
Hare 295
Heaton Corn 100
Helms Federal 1G
Howell 12
Huerfanito Unit 103F
Huerfanito Unit 29S
Huerfanito Unit 39S
Huerfanito Unit 47S
Huerfanito Unit 50E
Huerfanito Unit 75E
Huerfanito Unit 83E
Huerfanito Unit 87E
Huerfanito Unit 90E
Huerfanito Unit 90M
Huerfanito Unit 98S
Huerfano Unit 108F
Huerfano Unit 282E
Huerfano unit 305
Huerfano unit 307
Huerfano Unit 554
Johnston Federal 24S

King 3
Lackey A Com 100S
Lambe 1C
Lambe 7S
Lively 8M
Lloyd A 100
Lloyd A 100S
Martin 100
McCord B 1F
McDurmitt Com 100S
McManus 13R
Mitchell 1S
Morris A 14
Newberry B 1N
Newsom B 503
Newsom B 8N
Pierce A 210S
Roelofs 1N
San Juan 27-4 Unit 132G
San Juan 27-4 Unit 132M
San Juan 27-4 Unit 139N
San Juan 27-4 Unit 140B
San Juan 27-4 Unit 141M
San Juan 27-4 Unit 147Y
San Juan 27-4 Unit 153B
San Juan 27-4 Unit 22M
San Juan 27-4 Unit 38P
San Juan 27-4 Unit 41N
San Juan 27-4 Unit 42N
San Juan 27-4 Unit 569N
San Juan 27-4 Unit 59N
San Juan 27-4 Unit 60M
San Juan 27-5 Unit 113F
San Juan 27-5 Unit 59N
San Juan 27-5 Unit 84N
San Juan 27-5 unit 901
San Juan 27-5 Unit 902
San Juan 27-5 Unit 903
San Juan 27-5 Unit 904
San Juan 27-5 Unit 905
San Juan 27-5 Unit 906
San Juan 27-5 Unit 907
San Juan 27-5 Unit 908
San Juan 27-5 Unit 909
San Juan 27-5 Unit 910
San Juan 27-5 Unit 912
San Juan 27-5 Unit 913
San Juan 27-5 Unit 914
San Juan 27-5 Unit 915
San Juan 27-5 Unit POW 916
San Juan 28-4 Unit 27M
San Juan 28-5 Unit 54F
San Juan 28-5 Unit 62E
San Juan 28-5 Unit 63M
San Juan 28-5 Unit 76N
San Juan 28-5 Unit 77N
San Juan 28-6 Unit 113N

DISTRICT I
1635 N. French Dr., Hobbs, N.M. 88240

DISTRICT II
1301 W. Grand Avenue, Artesia, N.M. 88210

DISTRICT III
1000 Edo Brazos Rd., Aztec, N.M. 87410

DISTRICT IV
1220 S. St. Francis Dr., Santa Fe, N.M. 87505

State of New Mexico
Energy, Minerals & Natural Resources Department

OIL CONSERVATION DIVISION
1220 South St. Francis Dr.
Santa Fe, N.M. 87505

Form C-102

Revised October 12, 2005

Submit to Appropriate District Office

State Lease - 4 Copies

Fee Lease - 3 Copies

☐ AMENDED REPORT

WELL LOCATION AND ACREAGE DEDICATION PLAT

¹ API Number 30-039-30299	² Pool Code 72319/71599	³ Pool Name DAKOTA / MESA VERDE
⁴ Property Code 7454	⁵ Property Name SAN JUAN 27-5 UNIT	⁶ Well Number 903
⁷ OGRID No. 14538	⁸ Operator Name BURLINGTON RESOURCES OIL & GAS COMPANY LP.	⁹ Elevation 6625

¹⁰Surface Location

UL or lot no.	Section	Township	Range	Lot Idn	Feet from the	North/South line	Feet from the	East/West line	County
G	8	27 N	5 W		1595	NORTH	1860	EAST	RIO ARriba

¹¹Bottom Hole Location If Different From Surface

UL or lot no.	Section	Township	Range	Lot Idn	Feet from the	North/South line	Feet from the	East/West line	County
B	8	27 N	5 W		925	NORTH	1665	EAST	RIO ARriba

¹² Dedicated Acres 320 (E/2)	¹³ Joint or Infill	¹⁴ Consolidation Code	¹⁵ Order No.
--	-------------------------------	----------------------------------	-------------------------

NO ALLOWABLE WILL BE ASSIGNED TO THIS COMPLETION UNTIL ALL INTERESTS HAVE BEEN CONSOLIDATED
OR A NON-STANDARD UNIT HAS BEEN APPROVED BY THE DIVISION


<p>16 S 88°47'03" E</p> <p>2646.33'</p> <p>N 0°23'21" W</p> <p>NAD 83 LAT: 36.591447° N LONG: 107.379409° W</p> <p>NAD 27 LAT: 36° 35.4863' N LONG: 107° 22.7284' W</p> <p>SECTION 8</p> <p>2616.10'</p> <p>RECEIVED SEP 10 2007 Bureau of Land Management Farmington Field Office</p> <p>N 0°35'07" W</p> <p>N 78°52'24" W</p> <p>2690.16'</p>	<p>1595'</p> <p>925'</p> <p>1665'</p> <p>1860'</p> <p>5208.18'</p> <p>NAD 83 LAT: 36.593274° N LONG: 107.378792° W</p> <p>NAD 27 LAT: 36° 35.5959' N LONG: 107° 22.6914' W</p> <p>USA SF-079391</p> <p>S 83°29'20" W</p> <p>2670.27'</p>	<p>17 OPERATOR CERTIFICATION</p> <p>I hereby certify that the information contained herein is true and complete to the best of my knowledge and belief, and that this organization either owns a working interest or unleased mineral interest in the land including the proposed bottom hole location or has a right to drill this well at this location pursuant to a contract with an owner of such a mineral or working interest, or to a voluntary pooling agreement or a compulsory pooling order heretofore entered by the division.</p> <p><i>Rhonda Rogers</i> 9-10-07 Signature Date Rhonda Rogers Printed Name</p> <p>18 SURVEYOR CERTIFICATION</p> <p>I hereby certify that the well location shown on this plat was plotted from field notes of actual surveys made by me or under my supervision, and that the same is true and correct to the best of my belief.</p> <p>8/02/07 Date of Survey Signature and Seal of Professional Surveyor MARSHALL W. LINDEN NEW MEXICO 17078 LICENSED PROFESSIONAL SURVEYOR</p> <p>Certificate Number</p>
---	--	--

CCF

GROUND ELEVATION: 6625 - DATE: JUNE 5, 2007



LATITUDE 36°35 4863' N LONGITUDE 107°22 7284' W NAD 27

<u>PAD CONSIG. SPECS.</u> 1 RAMP INTO P.T. CONSTRUCTED FROM PAD GRADE INTO FLARE AREA AT 5% SLOPE 2 APPROXIMATE 13x75' PIT AREA LINED WITH 12 MIL POLYURETH. 3 RESERVE PIT DEPTH TO BE 2' ABOVE DEEP SIDE (OVERFLOW- 4 SIDE OF T AND ABOVE SHALLOW SIDE) 3' EDGE AND TEMPORARY CONSTRUCTION DEFINED IN FIELD W/CI T-POST	1) CONTRACTOR SHOULD CALL 'ONE-CALL' FOR LOCATION OF ANY MARKED OR UNMARKED BURIED PIPELINES OR CABLES ON WELLPAD AND OR ACCESS ROAD AT LEAST TWO (2) WORKING DAYS PRIOR TO CONST 2) UNITED FIELD SERVICES, INC. IS NOT LIABLE FOR UNDERGROUND UTILITIES OR PIPELINES	SURVEYED: 6/05/07 REV. DATE: 8/17/07 APP. BY: M.W.L. DRAWN BY: H.S. DATE DRAWN: 6/19/07 FILE NAME: 7686L02	 P.O. BOX 3651 FARMINGTON, NM 87499 OFFICE: (505)334-0408
--	---	---	---

BURLINGTON RESOURCES OIL & GAS COMPANY LP.
 SAN JUAN 27-5 UNIT 903 - 1595' FNL & 1860' FEL (SURFACE)
 925' FNL & 1665' FEL (BOTTOM)
 SECTION 8, T-27-N, R-5-W, N.M.P.M., RIO ARRIBA COUNTY, N.M.
 GROUND ELEVATION: 6625 - DATE: JUNE 5, 2007

ELEVATION

A-A'

£

6640							
6630							
6620							
6610							
6600							

B-B'

£

6640							
6630							
6620							
6610							
6600							

C-C'

£

6640							
6630							
6620							
6610							
6600							

1" = 60' - HORIZ.
 1" = 30' - VERT.

1.) CONTRACTOR SHOULD CALL "ONE-CALL" FOR LOCATION OF ANY MARKED OR UNMARKED BURIED PIPELINES OR CABLES ON WELLPAD AND OR ACCESS ROAD AT LEAST TWO (2) WORKING DAYS PRIOR TO CONST

2.) UNITED FIELD SERVICES, INC IS NOT LIABLE FOR UNDERGROUND UTILITIES OR PIPELINES.

SURVEYED: 6/05/07

REV. DATE: 8/17/07

APP. BY M.W.L.

DRAWN BY: H.S.

DATE DRAWN: 6/11/07

FILE NAME: 7686C02

UNITED
 FIELD SERVICES INC.

P.O. BOX 3651
 FARMINGTON, NM 87499
 OFFICE: (505)334-0408

Burlington Resources Oil & Gas Company, LP

San Juan Basin

Closure Plan

In accordance with Rule 19.15.17.12 NMAC the following information describes the closure requirements of temporary pits on Burlington Resources Oil & Gas Company, LP (BR) locations. This is BR's standard procedure for all temporary pits. A separate plan will be submitted for any temporary pit which does not conform to this plan.

All closure activities will include proper documentation and be available for review upon request and will be submitted to OCD within 60 days of closure of pit closure. Closure report will be filed on C-144 and incorporate the following:

- Details on Capping and Covering, where applicable.
- Plot Plan (Pit Diagram)
- Inspection Reports
- Sampling Results
- C-105
- Copy of Deed Notice will be filed with County Clerk

General Plan:

1. All free standing liquids will be removed at the start of the pit closure process from the pit and disposed of in a division-approved facility or recycle, reuse or reclaim the liquids in a manner that the appropriate division district office approves. The facilities to be used will be Basin Disposal (Permit #NM-01-005) and Envirotech Land Farm (Permit #NM-01-011)
2. The preferred method of closure for all temporary pits will be on-site burial, assuming that all the criteria listed in sub-section (B) of 19.15.17.13 are met.
3. The surface owner shall be notified of BR's closing of the temporary pit prior to closure as per the approved closure plan via certified mail, return receipt requested.
4. Within 6 months of the Rig Off status occurring BR will ensure that temporary pits are closed, re-contoured, and reseeded.
5. Notice of Closure will be given prior to the Aztec Division office between 72 hours and one week via email, or verbally. The notification of closure will include the following:
 - i. Operator's name
 - ii. Location by Unit Letter, Section, Township, and Range. Well name and API number.
6. Liner of temporary pit shall be removed above "mud level" after stabilization. Removal of liner will consist of manually or mechanically cutting liner at mud level and removing all remaining liner. Care will be taken to remove "All" of the liner i.e., edges of liner entrenched or buried. All excessive liner will be disposed of at the San Juan County Landfill located on CR 3100.
7. Pit contents shall be mixed with non-waste containing, earthen material in order to achieve the solidification process. The solidification process will be accomplished using a combination of natural drying and mechanically mixing. Pit contents will be mixed with non-waste, earthen material to a consistency that is deemed a safe and stable. The mixing ratio shall not exceed 3 parts clean soil to 1 part pit contents.
8. A five point composite sample will be taken of the pit using sampling tools and all samples tested per Subsection B of 19.15.17.13(B)(1)(b). In the event that the criteria are not met, all contents will be handled per Subparagraph (a) of Paragraph (1) of Subsection B of 19.15.17.13 i.e., Dig and haul.

Components	Tests Method	Limit (mg/Kg)
Benzene	EPA SW-846 8021B or 8260B	0.2
BTEX	EPA SW-846 8021B or 8260B	50
TPH	EPA SW-846 418.1	2500
GRO/DRO	EPA SW-846 8015M	500
Chlorides	EPA 300.1	1000/500

9. A five point composite sample will be taken from the cavitation pit pursuant to 19.15.17.13(B)(1)(b)(i) in order to assure there has not been any type of release.

Components	Tests Method	Limit (mg/Kg)
Benzene	EPA SW-846 8021B or 8260B	0.2
BTEX	EPA SW-846 8021B or 8260B	50
TPH	EPA SW-846 418.1	2500
GRO/DRO	EPA SW-846 8015M	500
Chlorides	EPA 300.1	500

10. Upon completion of solidification and testing standards being passed, the pit area will be backfilled with compacted, non-waste containing, earthen material. A minimum of four feet of cover shall be achieved and the cover shall include one foot of suitable material to establish vegetation at the site, or the background thickness of topsoil, whichever is greater. If standard testing fails BR will dig and haul all contents pursuant to 19.15.17.13.i.a. After doing such, confirmation sampling will be conducted to ensure a release has not occurred.
11. During the stabilization process if the liner is ripped by equipment the Aztec OCD office will be notified within 48 hours and the liner will be repaired if possible. If the liner can not be repaired then all contents will be excavated and removed.
12. Dig and Haul Material will be transported to the Envirotech Land Farm located 16 miles south of Bloomfield on Angel Peak Road, CR 7175. Permit # NM010011
13. Re-contouring of location will match fit, shape, line, form and texture of the surrounding. Re-shaping will include drainage control, prevent ponding, and prevent erosion. Natural drainages will be unimpeded and water bars and/or silt traps will be place in areas where needed to prevent erosion on a large scale. Final re-contour shall have a uniform appearance with smooth surface, fitting the natural landscape.
14. Notification will be sent to OCD when the reclaimed area is seeded.
15. BR shall seed the disturbed areas the first growing season after the operator closes the pit. Seeding will be accomplished via drilling on the contour whenever practical or by other division-approved methods. BLM or Forest Service stipulated seed mixes will be used on federal lands. Vegetative cover will equal 70% of the native perennial vegetative cover (un-impacted) consisting of at least three native plant species, including at least one grass, but not including noxious weeds, and maintain that cover through two successive growing seasons. Repeat seeding or planting will be continued until successful vegetative growth occurs.

Type	Variety or Cultivator	PLS/A
Western wheatgrass	Arriba	3.0
Indian ricegrass	Paloma or Rimrock	3.0
Slender wheatgrass	San Luis	2.0
Crested wheatgrass	Hy-crest	3.0
Bottlebrush Squirreltail	Unknown	2.0
Four-wing Saltbrush	Delar	.25

Species shall be planted in pounds of pure live seed per acre:

Present Pure Live Seed (PLS) = Purity X Germination/100

Two lots of seed can be compared on the basis of PLS as follows:

Source No. One (poor quality)	Source No. two (better quality)
Purity 50 percent	Purity 80 percent
Germination 40 percent	Germination 63 percent
Percent PLS 20 percent	Percent PLS 50 percent
5 lb. bulk seed required to make 1 lb. PLS	2 lb. bulk seed required to make 1 lb. PLS

16. The temporary pit will be located with a steel marker, no less than four inches in diameter, cemented in a hole three feet deep in the center of the onsite burial upon the abandonment of all the wells on the pad. The marker will be flush with the ground to allow access of the active well pad and for safety concerns. The marker will include a threaded collar to be used for future abandonment. The top of the marker will contain a welded steel 12" square plate that indicates the onsite burial of the temporary pit. The plate will be easily removable and a four foot tall riser will be threaded into the top of the collar marker and welded around the base with the operator's information at the time of all wells on the pad are abandoned. The operator's information will include the following: Operator Name, Lease Name, Well Name and number, Unit Number, Section, Township, Range and an indicator that the marker is an onsite burial location.