

District I
1625 N. French Dr., Hobbs, NM 88240
District II
811 S. 1st Street, Artesia, NM 88210
District III
1000 Rio Brazos Rd., Aztec, NM 87410
District IV
1220 S. St. Francis Dr., Santa Fe, NM 87505

State of New Mexico
Energy, Minerals & Natural Resources

Form C-101
Revised March 17, 1999

Oil Conservation Division
1220 S. St. Francis Dr.
Santa Fe, NM 87505

Submit to appropriate District Office
State Lease - 6 Copies
Fee Lease - 5 Copies

☐ AMENDED REPORT

APPLICATION FOR PERMIT TO DRILL, RE-ENTER, DEEPEN, PLUGBACK, OR ADD A ZONE

¹ Operator Name and Address XTO Energy Inc. 2700 Farmington Ave., Bldg. K. Ste 1		² OGRID Number 30-045-32064
⁴ Property Code 32306	⁵ Property Name Beaver Lodge Com	⁶ Well No. #4

⁷ Surface Location

UL or lot no.	Section	Township	Range	Lot. Idn	Feet from the	North/South Line	Feet from the	East/West line	County
F	36	31N	11W		1,800'	North	2,100'	West	San Juan

⁸ Proposed Bottom Hole Location If Different From Surface

UL or lot no.	Section	Township	Range	Lot. Idn	Feet from the	North/South Line	Feet from the	East/West line	County

⁹ Proposed Pool 1 Blanco Mesaverde 72319	¹⁰ Proposed Pool 2
---	-------------------------------

¹¹ Work Type Code N	¹² Well Type Code G	¹³ Cable/Rotary Rotary	¹⁴ Lease Type Code State	¹⁵ Ground Level Elevation 5,915' Ground Level
¹⁶ Multiple N	¹⁷ Proposed Depth 5,200'	¹⁸ Formation Mesaverde	¹⁹ Contractor Bearcat Drilling	²⁰ Spud Date Winter, 2004

²¹ Proposed Casing and Cement Program

Hole Size	Casing Size	Casing weight/foot	Setting Depth	Sacks of Cement	Estimated TOC
12-1/4"	8-5/8"	24.0#, J-55, STC	260'	175 sx	Surface
7-7/8"	4-1/2"	10.5#, J-55, STC	5,200'	575 sx	Surface

²² Describe the proposed program. If this application is to DEEPEN or PLUG BACK, give the data on the present productive zone and proposed new productive zone. Describe the blowout prevention program, if any. Use additional sheets if necessary.

Surface: 175 sx of Type III cement w/2% CC & 1/4#/sx cello (14.8 ppg, 1.39 cuft). Circ to surface.

Production: 425 sx Type III w/8% gel & 1/4#/sx cello (11.4 ppg & 3.03 cuft/sx) followed by 150 sx Premium Lite cmt w/2% LCM & 1/4#/sx cello (12.5 ppg & 2.01 cuft/sx). Circ cement to surface.

Remarks: Use 40% excess over volume calculated from op hole logs to determine final cement volume.

BOP diagram is attached.

²³ I hereby certify that the information given above is true and complete to the best of my knowledge and belief.		OIL CONSERVATION DIVISION	
Signature: <i>Jeffrey W. Patton</i>		Approved by: <i>[Signature]</i>	
Printed name: Jeffrey W. Patton		Title: DEPUTY OIL & GAS INSPECTOR DIST #3	
Title: Drilling Engineer		Approval Date: DEC 12 2003 Expiration Date: DEC 12 2004	
Date: 12/10/03	Phone:	Conditions of Approval:	
		Attached <input type="checkbox"/>	

DISTRICT I
P.O. Box 1980, Hobbs, N.M. 88241-1980

DISTRICT II
P.O. Drawer DD, Artesia, N.M. 88211-0719

DISTRICT III
1000 Rio Brazos Rd., Aztec, N.M. 87410

DISTRICT IV
PO Box 2088, Santa Fe, NM 87504-2088

State of New Mexico
Energy, Minerals & Natural Resources Department

OIL CONSERVATION DIVISION

P.O. Box 2088
Santa Fe, NM 87504-2088

REC'D / SAN JUAN

Form C-102

Revised February 21, 1994

Instructions on back

Submit to Appropriate District Office

State Lease - 4 Copies

Fee Lease - 3 Copies

☐ AMENDED REPORT

AUG 29 2003

WELL LOCATION AND ACREAGE DEDICATION PLAT

1 API Number 30-045-32064		2 Pool Code 72319		3 Pool Name Blanco Mesaverte	
4 Property Code 32306		5 Property Name BEAVER LODGE COM			6 Well Number 4
7 OGRID No. 11070607		8 Operator Name XTO ENERGY INC.			9 Elevation 5915

10 Surface Location

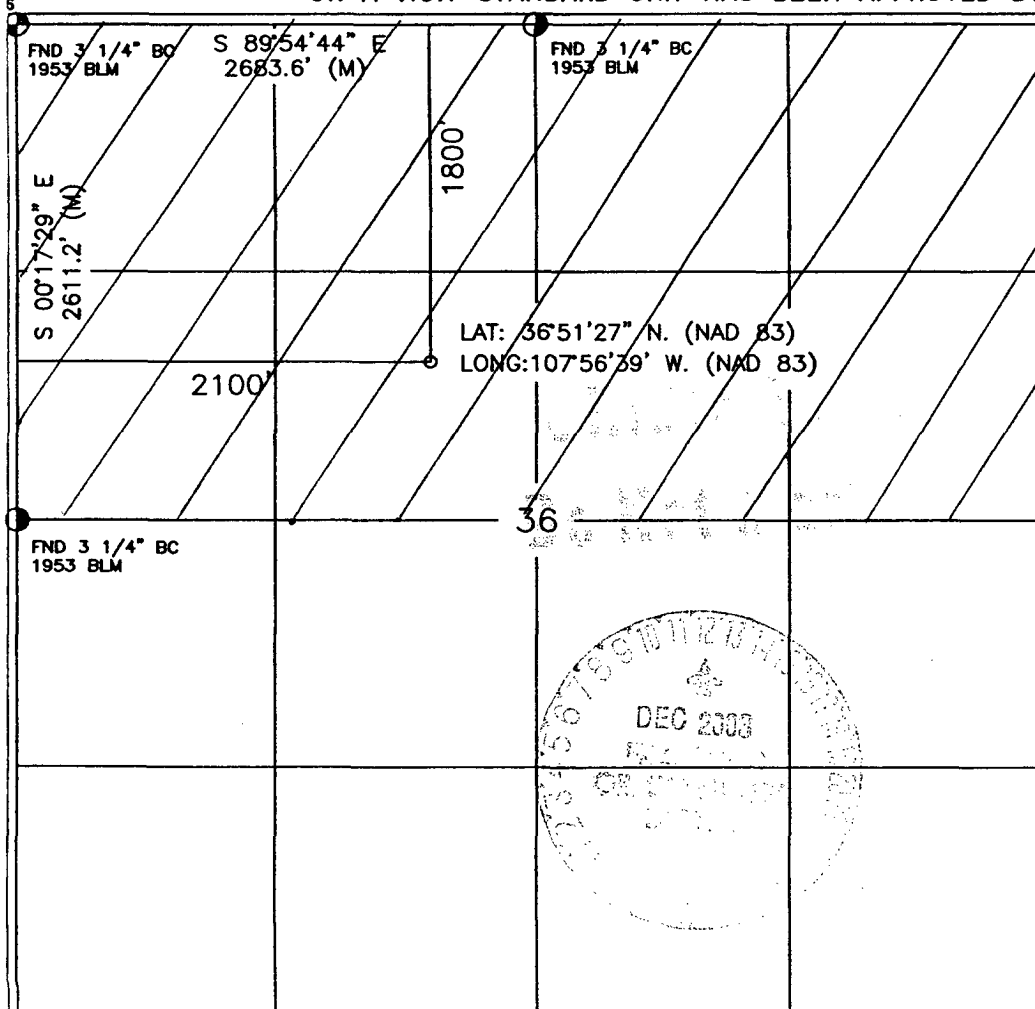
UL or lot no.	Section	Township	Range	Lot Idn	Feet from the	North/South line	Feet from the	East/West line	County
F	36	31-N	11-W		1800	NORTH	2100	WEST	SAN JUAN

11 Bottom Hole Location If Different From Surface

UL or lot no.	Section	Township	Range	Lot Idn	Feet from the	North/South line	Feet from the	East/West line	County

12 Dedicated Acres 320 N12	13 Joint or Infill I	14 Consolidation Code	15 Order No.
-------------------------------	-------------------------	-----------------------	--------------

NO ALLOWABLE WILL BE ASSIGNED TO THIS COMPLETION UNTIL ALL INTERESTS HAVE BEEN CONSOLIDATED
OR A NON-STANDARD UNIT HAS BEEN APPROVED BY THE DIVISION



17 OPERATOR CERTIFICATION

I hereby certify that the information contained herein is true and complete to the best of my knowledge and belief

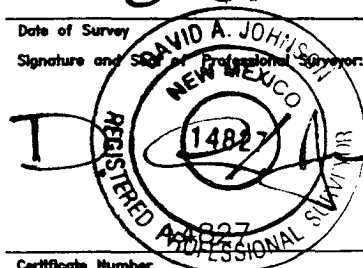
Signature: Kelly K Small
Printed Name: Kelly K Small
Title: Dealing Assistant
Date: 9/2/03

18 SURVEYOR CERTIFICATION

I hereby certify that the well location shown on this plat was plotted from field notes of actual surveys made by me or under my supervision, and that the same is true and correct to the best of my belief.

8-27-03

Date of Survey
Signature and Stamp of Professional Surveyor:



Certificate Number

BOP SCHEMATIC FOR DRILLING OPERATIONS CLASS 1 (2M) NORMAL PRESSURE

TESTING PROCEDURE

1. Test BOP after installation:

Pressure test BOP to 200-300
psig (low pressure) for 5 min.

Test BOP to Working Press or
to 70% internal yield of surf csg
(10 min).

2. Test operation of (both) rams on every trip.

3. Check and record Accumulator pressure on every tour.

4. Re-pressure test BOP stack after changing out rams.

5. Have kelly cock valve with handle available.

6. Have safety valve and subs to fit all sizes of drill string.

