


UNITED STATES  
DEPARTMENT OF THE INTERIOR  
BUREAU OF LAND MANAGEMENT

RECEIVED

APR 29 2009

APPLICATION FOR PERMIT TO DRILL, DEEPEN, OR PLUG BACK Bureau of Land Management  
Farmington Field Office

1a. Type of Work DRILL	5. Lease Number SF-077951-A Unit Reporting Number	
1b. Type of Well GAS	6. If Indian, All. or Tribe	
2. Operator <b>BURLINGTON</b> RESOURCES Oil & Gas Company, LP	7. Unit Agreement Name ROVD AUG 14 '09 OIL CONS. DIV.	
3. Address & Phone No. of Operator PO Box 4289, Farmington, NM 87499  (505) 326-9700	8. Farm or Lease Name Frost DIST. 3 9. Well Number 6S	
4. Location of Well Surf: Unit I (NESE), 2396' FSL & 783' FEL  Surf: Latitude: 36.54557° N (NAD83) Longitude: 107.87662° W	10. Field, Pool, Wildcat Basin Fruitland Coal  11. Sec., Twn, Rge, Mer. (NMPM) I Sec. 27, T27N, R10W API # 30-045-34968	
14. Distance in Miles from Nearest Town 19 miles/Bloomfield	12. County San Juan	13. State NM
15. Distance from Proposed Location to Nearest Property or Lease Line 783'		
16. Acres in Lease 640.00	17. Acres Assigned to Well FC 320.0 (E/2)	
18. Distance from Proposed Location to Nearest Well, Drlg, Compl, or Applied for on this Lease 1170' from Jack Frost B-1 (DK)		
19. Proposed Depth 2182'	 H <sub>2</sub> S POTENTIAL EXIST	
20. Rotary or Cable Tools Rotary		
21. Elevations (DF, FT, GR, Etc.) 6221' GL	22. Approx. Date Work will Start BLM'S APPROVAL OR ACCEPTANCE OF THIS ACTION DOES NOT RELIEVE THE LESSEE AND OPERATOR FROM OBTAINING ANY OTHER AUTHORIZATION REQUIRED FOR OPERATIONS ON FEDERAL AND INDIAN LANDS 7/29/2009	
23. Proposed Casing and Cementing Program See Operations Plan attached		
24. Authorized by: <u>Crystal Tafoya</u> Crystal Tafoya (Regulatory Technician)	Date: <u>7/29/2009</u>	

PERMIT NO.

APPROVAL DATE

APPROVED BY D. Monticelli

TITLE AFM

DATE 8/12/09

Archaeological Report attached

Threatened and Endangered Species Report attached

NOTE: This format is issued in lieu of U.S. BLM Form 3160-3

Title 18 U.S.C. Section 1001, makes it a crime for any person knowingly and willfully to make to any department or agency of the United States any false, fictitious or fraudulent statements or presentations as to any matter within its jurisdiction.

Example Master Plan Type 2

Bond Numbers NMB-000015 and NMB-000089

AUG 31 2009

This action is subject to technical and  
procedural review pursuant to 43 CFR 3165.3  
and appeal pursuant to 43 CFR 3165.4

NMOCD

Drilling operations authorized are  
subject to compliance with attached  
"General Requirements".

DISTRICT I  
1625 N. French Dr., Hobbs, N.M. 88240

DISTRICT II  
1301 W. Grand Avenue, Artesia, N.M. 88210

DISTRICT III  
1000 Rio Brazos Rd., Aztec, N.M. 87410

DISTRICT IV  
1220 S. St. Francis Dr., Santa Fe, NM 87505

State of New Mexico  
Energy, Minerals & Natural Resources Department

Form C-102  
Revised October 12, 2005

OIL CONSERVATION DIVISION  
1220 South St. Francis Dr.  
Santa Fe, NM 87505

RECEIVED  
Submitted to Appropriate District Office  
State Lease - 4 Copies  
Fee Lease - 3 Copies

APR 29 2009

☐ AMENDED REPORT

WELL LOCATION AND ACREAGE DEDICATION PLAT

*API Number 30-045-349608		*Pool Code 71629	*Pool Name BASIN FRUITLAND COAL
*Property Code 7034	*Property Name FROST		*Well Number 6 S
*OGRID No. 14538	*Operator Name BURLINGTON RESOURCES OIL & GAS COMPANY LP		*Elevation 6221'

<sup>10</sup> Surface Location

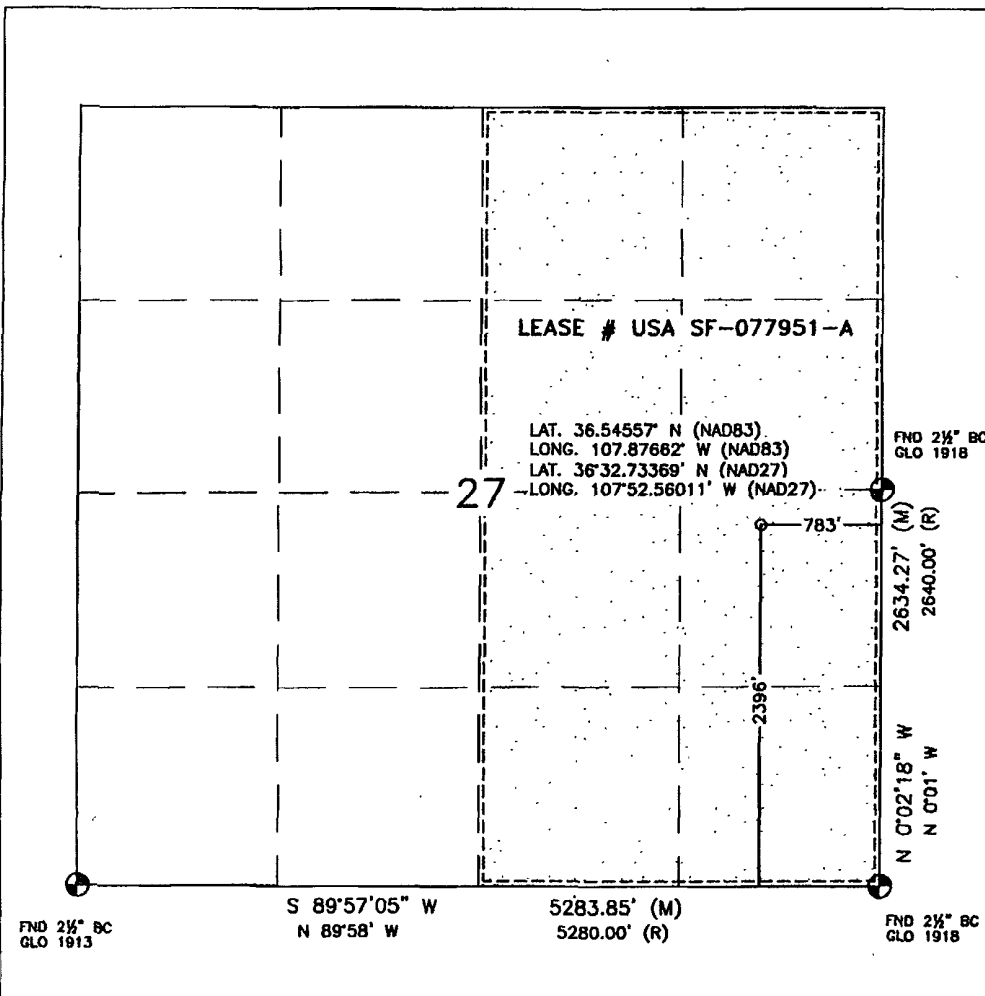
UL or lot no.	Section	Township	Range	Lot Idn	Feet from the	North/South line	Feet from the	East/West line	County
I	27	27N	10W		2396'	SOUTH	783'	EAST	SAN JUAN

<sup>11</sup> Bottom Hole Location If Different From Surface

UL or lot no.	Section	Township	Range	Lot Idn	Feet from the	North/South line	Feet from the	East/West line	County
I									
<sup>12</sup> Dedicated Acres 320.0 Acres - (E/2)			<sup>13</sup> Joint or Infill		<sup>14</sup> Consolidation Code		<sup>15</sup> Order No.		

NO ALLOWABLE WILL BE ASSIGNED TO THIS COMPLETION UNTIL ALL INTERESTS HAVE BEEN CONSOLIDATED  
OR A NON-STANDARD UNIT HAS BEEN APPROVED BY THE DIVISION

16



<sup>17</sup> OPERATOR CERTIFICATION

I hereby certify that the information contained herein is true and complete to the best of my knowledge and belief, and that this organization either owns a working interest or unleased mineral interest in the land including the proposed bottom hole location or has a right to drill this well at this location pursuant to a contract with an owner or a compulsory pooling order heretofore entered by the division.

*Crystal Tafoya* 4/28/09  
Signature Date

Crystal Tafoya 4-28-09  
Printed Name

<sup>18</sup> SURVEYOR CERTIFICATION

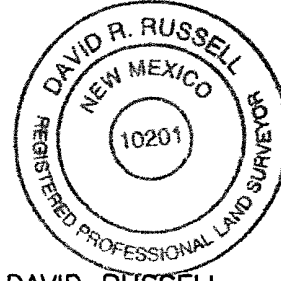
I hereby certify that the well location shown on this plat was plotted from field notes of actual surveys made by me or under my supervision, and that the same is true and correct to the best of my belief.

MAY 20, 2008

Date of Survey

Signature and Seal of Professional Surveyor:

*David R. Russell*



DAVID RUSSELL

Certificate Number 10201

**COMPANY**  
**Charge Code**  
**WELL NAME**  
**DUAL WELL**  
**TRIPLE WELL**

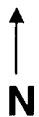
BURLINGTON RESOURCES		
WAN.RFE.PD08.F1		
FROST # 6 S	DATE	6/4/2008
WELL NAME		
WELL NAME		

COORDINATES	SEC	TNSHP	RANGE	LATITUDE	LONGITUDE
	1 27	27 N	10 W	36.54557 N	107.87662 W
COUNTY	SAN JUAN				

	SIZE	NEEDED	EXISTING	1 PHASE	3 PHASE
<u>RECTIFIER</u>					
<u>SOLAR</u>	DUAL	X			
<u>GROUND BED</u>					
<u>240 V METER POLE</u>					
<u>480 V METER POLE</u>					
<u>D C CABLES</u>	# 8	200'			
<u>A C CABLES</u>					
<u>PRIMARY POWER</u>				JEMEZ	
<u>DISTANCE TO POWER</u>				1500'	
<u>UNDERGROUND</u>					
<u>PUMPJACK</u>					
<u>WATER PUMP</u>					

COMMENTS	1 PHASE JEMEZ PRIMARY 1500'
	INSTALL SINGLE WELL SOLAR SYSTEM OR EXTEND POWER LINE
	SANDY AREA
	HIGH HILL NEARBY

**FROST # 6 S**



INSTALL SOLAR OR EXTEND POWER LINE  
1500 FT FROM HILL TOP

SANDY AREA

# HIGH HILL

# 6 S

ENTERPRISE  
PIPELINE

1 PHASE  
JEMEZ  
PRIMARY

TANK



SEP OR  
DEHY



**SOLAR**



METER POLE



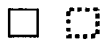
**PUMP  
JACK**



GND/BED EXISTING CABLE



RECT



PIT



WELL



proposed  
solar/gb



### PROPOSED CABLE



FOREIGN PL



POWER LINE



CONOCO PL



# PROJECT PROPOSAL - New Drill / Sidetrack

San Juan Business Unit

FROST 6S

DEVELOPMENT

Lease:		AFE #: WAN.CDR.8159		AFE \$: 779,102.79	
Field Name: hBR_SAN JUAN		Rig: Aztec Rig 580		State: NM	County: SAN JUAN
Geologist:		Phone:		Geophysicist:	
Geoscientist: Clark, Dave D		Phone: +1 505-326-9762		Prod. Engineer:	
Res. Engineer: Akwari, Bill N		Phone: +1 505-599-4076		Proj. Field Lead:	
				Phone:	

## Primary Objective (Zones):

Zone	Zone Name
JCV	BASIN FRUITLAND COAL (GAS)

## Location: Datum Code: NAD 27

Latitude: 36.545562	Longitude: -107.876002	X:	Y:	Section: 27	Range: 010W
Footage X: 783 FEL	Footage Y: 2396 FSL	Elevation: 6221	(FT)	Township: 027N	
Tolerance:					

Location Type: Year Round	Start Date (Est.): 1/1/2009	Completion Date:	Date In Operation:
---------------------------	-----------------------------	------------------	--------------------

Formation Data: Assume KB = 6232	Units = FT
----------------------------------	------------

Formation Call & Casing Points	Depth (TVD in Ft)	SS (Ft)	Depletion (Yes/No)	BHP (PSIG)	BHT	Remarks
Surface Casing	120	6112	<input type="checkbox"/>			8-3/4 hole. 7" 20 ppf, J-55-STC csg. Cement with 50 cuft. Circulate cement to surface.
OJO ALAMO	1002	5230	<input type="checkbox"/>			
KIRTLAND	1132	5100	<input type="checkbox"/>			
FRUITLAND	1802	4430	<input type="checkbox"/>	175		Gas
PICTURED CLIFFS	1982	4250	<input type="checkbox"/>			Gas
Total Depth	2182	4050	<input type="checkbox"/>			6-1/4" hole. 4-1/2" 10.5 ppf, J-55, STC casing. Cement with 382cuft. Circulate cement to surface.

## Reference Wells:

Reference Type	Well Name	Comments
----------------	-----------	----------

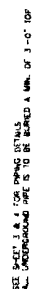
## Logging Program:

Intermediate Logs: <input type="checkbox"/> Log only if show <input type="checkbox"/> GR/ILD <input type="checkbox"/> Triple Combo
--

TD Logs: <input type="checkbox"/> Triple Combo <input type="checkbox"/> Dipmeter <input type="checkbox"/> RFT <input type="checkbox"/> Sonic <input type="checkbox"/> VSP <input type="checkbox"/> TDT
--

## Additional Information:

Log Type	Stage	From (Ft)	To (Ft)	Tool Type/Name	Remarks
----------	-------	-----------	---------	----------------	---------



5 AC : 133MS

CONCOPHILLIPS HIGH PRESSURE 3 PHASE FACILITY DIAGRAM - SITE LAYOUT									
SAN JUAN BUSINESS UNIT									
CONCOPHILLIPS HIGH PRESSURE 3 PHASE FACILITY DIAGRAM - SITE LAYOUT									
CONCOPHILLIPS HIGH PRESSURE 3 PHASE FACILITY DIAGRAM - SITE LAYOUT									
CONCOPHILLIPS HIGH PRESSURE 3 PHASE FACILITY DIAGRAM - SITE LAYOUT									
CONCOPHILLIPS HIGH PRESSURE 3 PHASE FACILITY DIAGRAM - SITE LAYOUT									
CONCOPHILLIPS HIGH PRESSURE 3 PHASE FACILITY DIAGRAM - SITE LAYOUT									
CONCOPHILLIPS HIGH PRESSURE 3 PHASE FACILITY DIAGRAM - SITE LAYOUT									
CONCOPHILLIPS HIGH PRESSURE 3 PHASE FACILITY DIAGRAM - SITE LAYOUT									
CONCOPHILLIPS HIGH PRESSURE 3 PHASE FACILITY DIAGRAM - SITE LAYOUT									
CONCOPHILLIPS HIGH PRESSURE 3 PHASE FACILITY DIAGRAM - SITE LAYOUT									
CONCOPHILLIPS HIGH PRESSURE 3 PHASE FACILITY DIAGRAM - SITE LAYOUT									
CONCOPHILLIPS HIGH PRESSURE 3 PHASE FACILITY DIAGRAM - SITE LAYOUT									
CONCOPHILLIPS HIGH PRESSURE 3 PHASE FACILITY DIAGRAM - SITE LAYOUT									
CONCOPHILLIPS HIGH PRESSURE 3 PHASE FACILITY DIAGRAM - SITE LAYOUT									
CONCOPHILLIPS HIGH PRESSURE 3 PHASE FACILITY DIAGRAM - SITE LAYOUT									
CONCOPHILLIPS HIGH PRESSURE 3 PHASE FACILITY DIAGRAM - SITE LAYOUT									
CONCOPHILLIPS HIGH PRESSURE 3 PHASE FACILITY DIAGRAM - SITE LAYOUT									
CONCOPHILLIPS HIGH PRESSURE 3 PHASE FACILITY DIAGRAM - SITE LAYOUT									
CONCOPHILLIPS HIGH PRESSURE 3 PHASE FACILITY DIAGRAM - SITE LAYOUT									
CONCOPHILLIPS HIGH PRESSURE 3 PHASE FACILITY DIAGRAM - SITE LAYOUT									
CONCOPHILLIPS HIGH PRESSURE 3 PHASE FACILITY DIAGRAM - SITE LAYOUT									
CONCOPHILLIPS HIGH PRESSURE 3 PHASE FACILITY DIAGRAM - SITE LAYOUT									
CONCOPHILLIPS HIGH PRESSURE 3 PHASE FACILITY DIAGRAM - SITE LAYOUT									
CONCOPHILLIPS HIGH PRESSURE 3 PHASE FACILITY DIAGRAM - SITE LAYOUT									
CONCOPHILLIPS HIGH PRESSURE 3 PHASE FACILITY DIAGRAM - SITE LAYOUT									
CONCOPHILLIPS HIGH PRESSURE 3 PHASE FACILITY DIAGRAM - SITE LAYOUT									
CONCOPHILLIPS HIGH PRESSURE 3 PHASE FACILITY DIAGRAM - SITE LAYOUT									
CONCOPHILLIPS HIGH PRESSURE 3 PHASE FACILITY DIAGRAM - SITE LAYOUT									
CONCOPHILLIPS HIGH PRESSURE 3 PHASE FACILITY DIAGRAM - SITE LAYOUT									
CONCOPHILLIPS HIGH PRESSURE 3 PHASE FACILITY DIAGRAM - SITE LAYOUT									
CONCOPHILLIPS HIGH PRESSURE 3 PHASE FACILITY DIAGRAM - SITE LAYOUT									
CONCOPHILLIPS HIGH PRESSURE 3 PHASE FACILITY DIAGRAM - SITE LAYOUT									
CONCOPHILLIPS HIGH PRESSURE 3 PHASE FACILITY DIAGRAM - SITE LAYOUT									
CONCOPHILLIPS HIGH PRESSURE 3 PHASE FACILITY DIAGRAM - SITE LAYOUT									
CONCOPHILLIPS HIGH PRESSURE 3 PHASE FACILITY DIAGRAM - SITE LAYOUT									
CONCOPHILLIPS HIGH PRESSURE 3 PHASE FACILITY DIAGRAM - SITE LAYOUT									
CONCOPHILLIPS HIGH PRESSURE 3 PHASE FACILITY DIAGRAM - SITE LAYOUT									
CONCOPHILLIPS HIGH PRESSURE 3 PHASE FACILITY DIAGRAM - SITE LAYOUT									
CONCOPHILLIPS HIGH PRESSURE 3 PHASE FACILITY DIAGRAM - SITE LAYOUT									
CONCOPHILLIPS HIGH PRESSURE 3 PHASE FACILITY DIAGRAM - SITE LAYOUT									
CONCOPHILLIPS HIGH PRESSURE 3 PHASE FACILITY DIAGRAM - SITE LAYOUT									
CONCOPHILLIPS HIGH PRESSURE 3 PHASE FACILITY DIAGRAM - SITE LAYOUT									
CONCOPHILLIPS HIGH PRESSURE 3 PHASE FACILITY DIAGRAM - SITE LAYOUT									
CONCOPHILLIPS HIGH PRESSURE 3 PHASE FACILITY DIAGRAM - SITE LAYOUT									
CONCOPHILLIPS HIGH PRESSURE 3 PHASE FACILITY DIAGRAM - SITE LAYOUT									
CONCOPHILLIPS HIGH PRESSURE 3 PHASE FACILITY DIAGRAM - SITE LAYOUT									
CONCOPHILLIPS HIGH PRESSURE 3 PHASE FACILITY DIAGRAM - SITE LAYOUT									
CONCOPHILLIPS HIGH PRESSURE 3 PHASE FACILITY DIAGRAM - SITE LAYOUT									
CONCOPHILLIPS HIGH PRESSURE 3 PHASE FACILITY DIAGRAM - SITE LAYOUT									
CONCOPHILLIPS HIGH PRESSURE 3 PHASE FACILITY DIAGRAM - SITE LAYOUT									
CONCOPHILLIPS HIGH PRESSURE 3 PHASE FACILITY DIAGRAM - SITE LAYOUT									
CONCOPHILLIPS HIGH PRESSURE 3 PHASE FACILITY DIAGRAM - SITE LAYOUT									
CONCOPHILLIPS HIGH PRESSURE 3 PHASE FACILITY DIAGRAM - SITE LAYOUT									
CONCOPHILLIPS HIGH PRESSURE 3 PHASE FACILITY DIAGRAM - SITE LAYOUT									
CONCOPHILLIPS HIGH PRESSURE 3 PHASE FACILITY DIAGRAM - SITE LAYOUT									
CONCOPHILLIPS HIGH PRESSURE 3 PHASE FACILITY DIAGRAM - SITE LAYOUT									
CONCOPHILLIPS HIGH PRESSURE 3 PHASE FACILITY DIAGRAM - SITE LAYOUT									
CONCOPHILLIPS HIGH PRESSURE 3 PHASE FACILITY DIAGRAM - SITE LAYOUT									
CONCOPHILLIPS HIGH PRESSURE 3 PHASE FACILITY DIAGRAM - SITE LAYOUT									
CONCOPHILLIPS HIGH PRESSURE 3 PHASE FACILITY DIAGRAM - SITE LAYOUT									
CONCOPHILLIPS HIGH PRESSURE 3 PHASE FACILITY DIAGRAM - SITE LAYOUT									
CONCOPHILLIPS HIGH PRESSURE 3 PHASE FACILITY DIAGRAM - SITE LAYOUT									
CONCOPHILLIPS HIGH PRESSURE 3 PHASE FACILITY DIAGRAM - SITE LAYOUT									
CONCOPHILLIPS HIGH PRESSURE 3 PHASE FACILITY DIAGRAM - SITE LAYOUT									
CONCOPHILLIPS HIGH PRESSURE 3 PHASE FACILITY DIAGRAM - SITE LAYOUT									
CONCOPHILLIPS HIGH PRESSURE 3 PHASE FACILITY DIAGRAM - SITE LAYOUT									
CONCOPHILLIPS HIGH PRESSURE 3 PHASE FACILITY DIAGRAM - SITE LAYOUT									
CONCOPHILLIPS HIGH PRESSURE 3 PHASE FACILITY DIAGRAM - SITE LAYOUT									
CONCOPHILLIPS HIGH PRESSURE 3 PHASE FACILITY DIAGRAM - SITE LAYOUT									
CONCOPHILLIPS HIGH PRESSURE 3 PHASE FACILITY DIAGRAM - SITE LAYOUT									
CONCOPHILLIPS HIGH PRESSURE 3 PHASE FACILITY DIAGRAM - SITE LAYOUT									
CONCOPHILLIPS HIGH PRESSURE 3 PHASE FACILITY DIAGRAM - SITE LAYOUT									
CONCOPHILLIPS HIGH PRESSURE 3 PHASE FACILITY DIAGRAM - SITE LAYOUT									
CONCOPHILLIPS HIGH PRESSURE 3 PHASE FACILITY DIAGRAM - SITE LAYOUT									
CONCOPHILLIPS HIGH PRESSURE 3 PHASE FACILITY DIAGRAM - SITE LAYOUT									
CONCOPHILLIPS HIGH PRESSURE 3 PHASE FACILITY DIAGRAM - SITE LAYOUT									
CONCOPHILLIPS HIGH PRESSURE 3 PHASE FACILITY DIAGRAM - SITE LAYOUT									
CONCOPHILLIPS HIGH PRESSURE 3 PHASE FACILITY DIAGRAM - SITE LAYOUT									
CONCOPHILLIPS HIGH PRESSURE 3 PHASE FACILITY DIAGRAM - SITE LAYOUT									
CONCOPHILLIPS HIGH PRESSURE 3 PHASE FACILITY DIAGRAM - SITE LAYOUT									
CONCOPHILLIPS HIGH PRESSURE 3 PHASE FACILITY DIAGRAM - SITE LAYOUT									
CONCOPHILLIPS HIGH PRESSURE 3 PHASE FACILITY DIAGRAM - SITE LAYOUT									
CONCOPHILLIPS HIGH PRESSURE 3 PHASE FACILITY DIAGRAM - SITE LAYOUT									
CONCOPHILLIPS HIGH PRESSURE 3 PHASE FACILITY DIAGRAM - SITE LAYOUT									
CONCOPHILLIPS HIGH PRESSURE 3 PHASE FACILITY DIAGRAM - SITE LAYOUT									
CONCOPHILLIPS HIGH PRESSURE 3 PHASE FACILITY DIAGRAM - SITE LAYOUT									
CONCOPHILLIPS HIGH PRESSURE 3 PHASE FACILITY DIAGRAM - SITE LAYOUT									
CONCOPHILLIPS HIGH PRESSURE 3 PHASE FACILITY DIAGRAM - SITE LAYOUT									
CONCOPHILLIPS HIGH PRESSURE 3 PHASE FACILITY DIAGRAM - SITE LAYOUT									
CONCOPHILLIPS HIGH PRESSURE 3 PHASE FACILITY DIAGRAM - SITE LAYOUT									
CONCOPHILLIPS HIGH PRESSURE 3 PHASE FACILITY DIAGRAM - SITE LAYOUT									
CONCOPHILLIPS HIGH PRESSURE 3 PHASE FACILITY DIAGRAM - SITE LAYOUT									
CONCOPHILLIPS HIGH PRESSURE 3 PHASE FACILITY DIAGRAM - SITE LAYOUT									
CONCOPHILLIPS HIGH PRESSURE 3 PHASE FACILITY DIAGRAM - SITE LAYOUT									
CONCOPHILLIPS HIGH PRESSURE 3 PHASE FACILITY DIAGRAM - SITE LAYOUT									
CONCOPHILLIPS HIGH PRESSURE 3 PHASE FACILITY DIAGRAM - SITE LAYOUT									
CONCOPHILLIPS HIGH PRESSURE 3 PHASE FACILITY DIAGRAM - SITE LAYOUT									
CONCOPHILLIPS HIGH PRESSURE 3 PHASE FACILITY DIAGRAM - SITE LAYOUT									
CONCOPHILLIPS HIGH PRESSURE 3 PHASE FACILITY DIAGRAM - SITE LAYOUT									
CONCOPHILLIPS HIGH PRESSURE 3 PHASE FACILITY DIAGRAM - SITE LAYOUT									
CONCOPHILLIPS HIGH PRESSURE 3 PHASE FACILITY DIAGRAM - SITE LAYOUT									
CONCOPHILLIPS HIGH PRESSURE 3 PHASE FACILITY DIAGRAM - SITE LAYOUT									
CONCOPHILLIPS HIGH PRESSURE 3 PHASE FACILITY DIAGRAM - SITE LAYOUT									
CONCOPHILLIPS HIGH PRESSURE 3 PHASE FACILITY DIAGRAM - SITE LAYOUT									
CONCOPHILLIPS HIGH PRESSURE 3 PHASE FACILITY DIAGRAM - SITE LAYOUT									
CONCOPHILLIPS HIGH PRESSURE 3 PHASE FACILITY DIAGRAM - SITE LAYOUT									
CONCOPHILLIPS HIGH PRESSURE 3 PHASE FACILITY DIAGRAM - SITE LAYOUT									
CONCOPHILLIPS HIGH PRESSURE 3 PHASE FACILITY DIAGRAM - SITE LAYOUT									
CONCOPHILLIPS HIGH PRESSURE 3 PHASE FACILITY DIAGRAM - SITE LAYOUT									
CONCOPHILLIPS HIGH PRESSURE 3 PHASE FACILITY DIAGRAM - SITE LAYOUT									
CONCOPHILLIPS HIGH PRESSURE 3 PHASE FACILITY DIAGRAM - SITE LAYOUT									
CONCOPHILLIPS HIGH PRESSURE 3 PHASE FACILITY DIAGRAM - SITE LAYOUT									
CONCOPHILLIPS HIGH PRESSURE 3 PHASE FACILITY DIAGRAM - SITE LAYOUT									
CONCOPHILLIPS HIGH PRESSURE 3 PHASE FACILITY DIAGRAM - SITE LAYOUT									
CONCOPHILLIPS HIGH PRESSURE 3 PHASE FACILITY DIAGRAM - SITE LAYOUT									
CONCOPHILLIPS HIGH PRESSURE 3 PHASE FACILITY DIAGRAM - SITE LAYOUT									
CONCOPHILLIPS HIGH PRESSURE 3 PHASE FACILITY DIAGRAM - SITE LAYOUT									
CONCOPHILLIPS HIGH PRESSURE 3 PHASE FACILITY DIAGRAM - SITE LAYOUT									
CONCOPHILLIPS HIGH PRESSURE 3 PHASE FACILITY DIAGRAM - SITE LAYOUT									
CONCOPHILLIPS HIGH									

**BURLINGTON RESOURCES O&G CO LP**

FROST #6 S

2396' FSL & 783' FEL

LOCATED IN THE NE/4 SE/4 OF SECTION 27,  
T27N, R10W, N.M.P.M.,  
SAN JUAN COUNTY, NEW MEXICO

**DIRECTIONS**

- 1) AT MP 143.2 OF HWY 550 & CR 7020, GO EAST FOR 3.4 MILES ACROSS KUTZ WASH.
- 2) TURN RIGHT, GO SOUTH FOR 1.4 MILES.
- 3) TURN LEFT & GO EASTERLY FOR 1.35 MILES.
- 4) TURN RIGHT GO 0.6 MILES TO "Y" INTERSECTION.
- 5) STAY TO RIGHT & GO 1.6 MILES TO "Y" INTERSECTION.
- 6) TURN RIGHT & GO 1.75 MILES.
- 7) TURN RIGHT & GO 0.1 MILES TO BEGIN ACCESS ON RIGHT.
- 8) FOLLOW RED FLAGGING FOR 278' TO LOCATION.

WELL FLAG LOCATED AT LAT. 36.54557°N, LONG.107.87662°W (NAD 83).

