

District I
1625 N French Dr, Hobbs, NM 88240
District II
1301 W Grand Avenue, Artesia, NM 88210
District III
1000 Rio Brazos Road, Aztec, NM 87410
District IV
1220 S. St Francis Dr, Santa Fe, NM 87505

State of New Mexico
Energy Minerals and Natural Resources

Form C-101
June 16, 2008

Oil Conservation Division
1220 South St. Francis Dr.
Santa Fe, NM 87505

Submit to appropriate District Office

☐ AMENDED REPORT

**APPLICATION FOR PERMIT TO DRILL, RE-ENTER, DEEPEN,
PLUGBACK, OR ADD A ZONE**

¹ Operator Name and Address CIMAREX ENERGY CO. 1700 LINCOLN ST., SUITE 1800, DENVER, CO 80203-4518		² OGRID Number 215099
³ Property Code 37807	⁵ Property Name BOARDWALK SWD	³ API Number 30-045-35018
⁹ Proposed Pool 1 SWD; ENTRADA		⁶ Well No 12
¹⁰ Proposed Pool 2		

7 Surface Location

UL or lot no D	Section 12	Township 21 N	Range 9 W	Lot ldn	Feet from the 348	North/South line NORTH	Feet from the 662	East/West line WEST	County SAN JUAN
--------------------------	----------------------	-------------------------	---------------------	---------	-----------------------------	----------------------------------	-----------------------------	-------------------------------	---------------------------

8 Proposed Bottom Hole Location If Different From Surface

UL or lot no	Section	Township	Range	Lot ldn	Feet from the	North/South line	Feet from the	East/West line	County
--------------	---------	----------	-------	---------	---------------	------------------	---------------	----------------	--------

Additional Well Information

¹¹ Work Type Code N	¹² Well Type Code S	¹³ Cable/Rotary ROTARY	¹⁴ Lease Type Code P	¹⁵ Ground Level Elevation 6,536'
¹⁶ Multiple N	¹⁷ Proposed Depth 6,000'	¹⁸ Formation ENTRADA	¹⁹ Contractor	²⁰ Spud Date JULY 1, 2009

21 Proposed Casing and Cement Program

Hole Size	Casing Size	Casing weight/foot	Setting Depth	Sacks of Cement	Estimated TOC
12-1/4"	9-5/8"	36 #	320'	175	SURFACE
8-3/4"	5-1/2"	15.5 #	6,000'	1,050	SURFACE

²² Describe the proposed program. If this application is to DEEPEN or PLUG BACK, give the data on the present productive zone and proposed new productive zone. Describe the blowout prevention program, if any. Use additional sheets if necessary.

WILL USE 2,000 # BOP SYSTEM

RCVD SEP 3 '09

OIL CONS. DIV.

DIST. 3

A COMPLETE C-144 MUST BE SUBMITTED TO AND APPROVED BY THE NMOCD FOR: A PIT, CLOSED LOOP SYSTEM, BELOW GRADE TANK, OR PROPOSED ALTERNATIVE METHOD, PURSUANT TO NMOCD PART 19.15.17, PRIOR TO THE USE OR CONSTRUCTION OF THE ABOVE APPLICATIONS.

²³ I hereby certify that the information given above is true and complete to the best of my knowledge and belief.

Signature

Brian Wood

Printed name

BRIAN WOOD

Title

CONSULTANT

E-mail Address

brian@permitswest.com

Date

4-1-09

Phone

(505) 466-8120

OIL CONSERVATION DIVISION

Approved by

Charles R. 9-8-09

Title

SUPERVISOR DISTRICT # 3

Approval Date

SEP 08 2009

Expiration Date

9/8/11

Conditions of Approval Attached ☐

Notify OCD 24 hours before spud

**NOTIFY AZTEC OCD 24 HRS.
PRIOR TO CASING & CEMENT**

SEP 08 2009

A

District I
1625 N. French Dr., Hobbs, NM 88240
District II
1301 W. Grand Ave., Artesia, NM 88210
District III
1000 Rio Brazos Rd., Aztec, NM 87410
District IV
1220 S. St Francis Dr., Santa Fe, NM 87505

State of New Mexico
Energy, Minerals & Mining Resources Department
OIL CONSERVATION DIVISION
2040 South Pacheco
Santa Fe, NM 87505

Form C - 102
Revised October 12, 2005
Submit to Appropriate District Office
State Lease - 4 Copies
Fee Lease - 3 Copies

☐ AMENDED REPORT

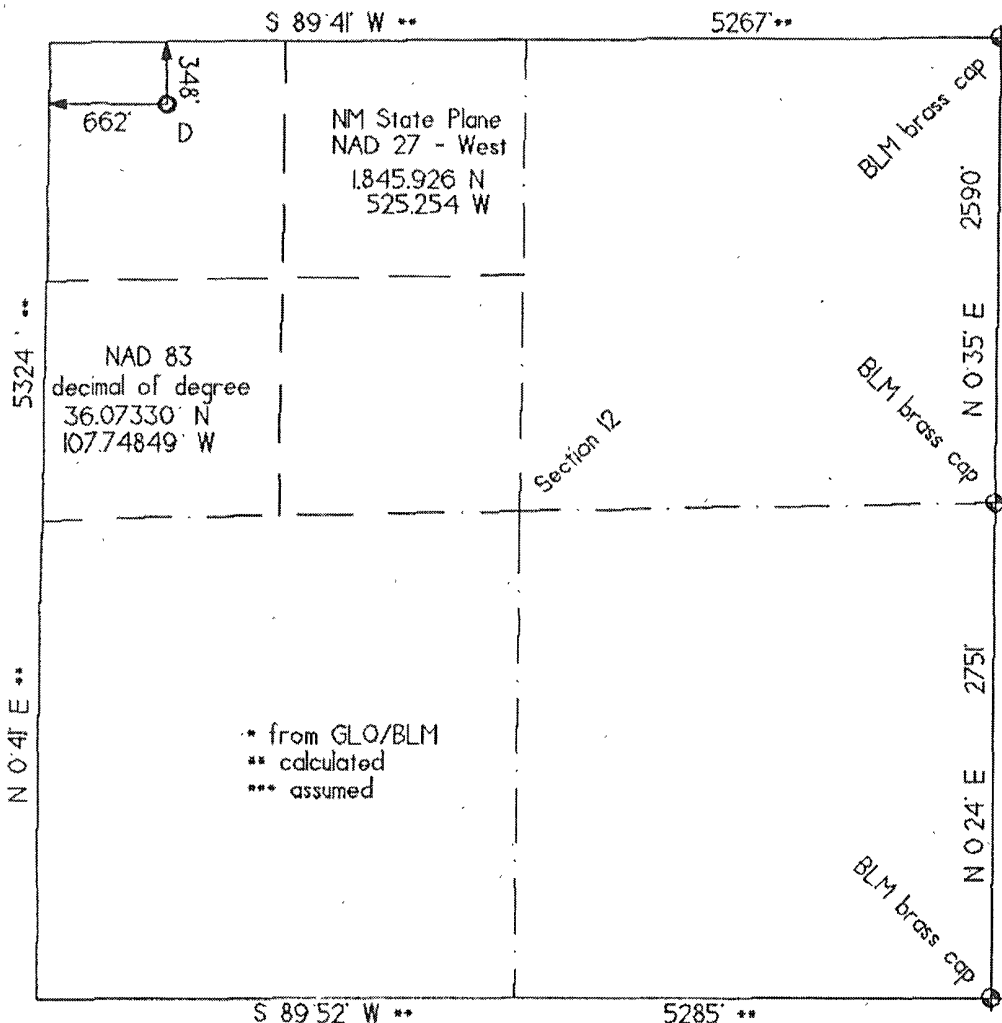
WELL LOCATION AND ACREAGE DEDICATION PLAT

APA Number 30-045-35018		Pool Code 96436	Pool Name SWD; ENTRADA
Property Code 37807	Property Name BOARDWALK SWD		Well Number 12
OGRID No. 215099	Operator Name CIMAREX ENERGY CO.		Elevation 6536'

Surface Location									
UL or Lot	Sec.	Twp.	Rge.	Lot Lsh.	Feet from	North/South	Feet from	East/West	County
D	12	21 North	9 West		348'	North	662'	West	San Juan

Bottom Hole Location If Different From Surface									
UL or Lot	Sec.	Twp.	Rge.	Lot Lsh.	Feet from	North/South	Feet from	East/West	County
Dedicated Acres					Joint or Infill	Consolidation Code		Order No. SWD 1185	

No allowable will be assigned to this completion until all interests have been consolidated or a non-standard unit has been approved by the division.

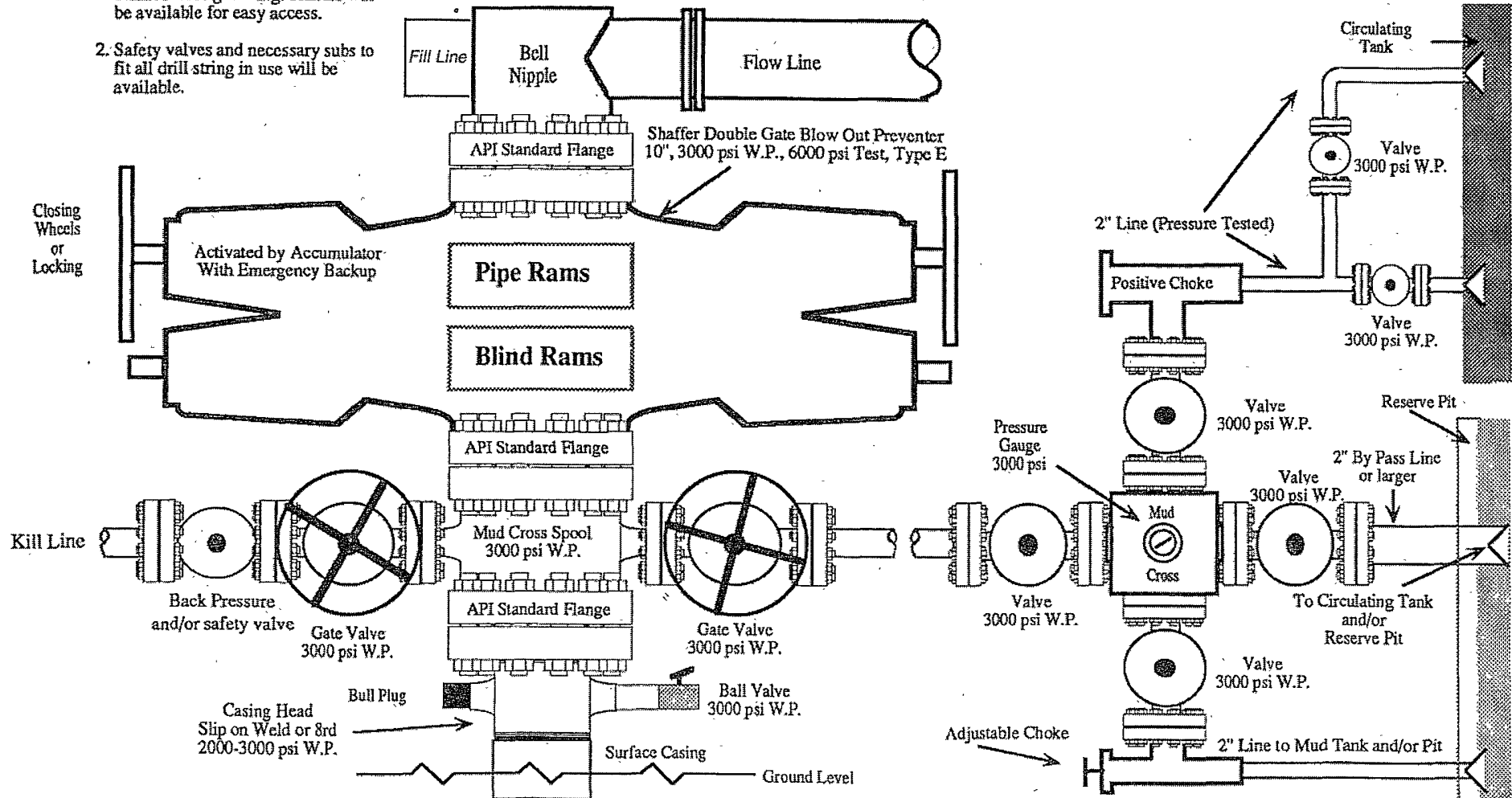


OPERATOR CERTIFICATION I hereby certify that the information contained herein is true and complete to the best of my knowledge and belief, and that this organization either owns a working interest or unleased mineral interest in the land including the bottom hole location or has a right to drill this well at this location pursuant to a contract with an owner of such a mineral or working interest, or to a voluntary pool agreement or a compulsory pooling order heretofore entered by the division.	
Date	APR. 1, 2009
Signature	<i>Brian Wood</i>
Printed Name	BRIAN WOOD
SURVEYOR CERTIFICATION I hereby certify that the well location shown on this plat was plotted from field notes of actual surveys made by me or under my supervision, and that the same is true and correct to the best of my belief.	
Date of survey	01/29/09
Signature and Seal of Professional Surveyor	<i>Gerald G. Huddleston</i>
Certificate Number	6844

2,000 PSI BOP SYSTEM

Note: 1. An upper Kelly cock valve will be utilized during drilling. Handle will be available for easy access.

2. Safety valves and necessary subs to fit all drill string in use will be available.



Note: This equipment is designed to meet requirements for a 2-M rating standard per 43 CFR part 3160 (amended). Proper operation and testing of equipment will be carried out per standard. 2,000 psi equipment can be substituted in the drawing to meet minimum requirements per standard.