

UNITED STATES
DEPARTMENT OF THE INTERIOR
BUREAU OF LAND MANAGEMENT

APPLICATION FOR PERMIT TO DRILL OR DEEPEN

1. a. TYPE OF WORK DRILL <input checked="" type="checkbox"/> DEEPEN <input type="checkbox"/>		5. LEASE DESIGNATION AND SERIAL NO. SF-079367A		
b. TYPE OF WELL OIL WELL <input type="checkbox"/> GAS WELL <input checked="" type="checkbox"/> OTHER <input type="checkbox"/> SINGLE ZONE <input type="checkbox"/> MULTIPLE ZONE <input checked="" type="checkbox"/>		6. IF INDIAN, ALLOTTEE OR TRIBE NAME Rincon Unit		
2. NAME OF OPERATOR Pure Resources		7. UNIT AGREEMENT NAME Rincon Unit 126R		
3. ADDRESS AND TELEPHONE NO. P.O. Box 850, Bloomfield New Mexico		8. FARM OR LEASE NAME, WELL NO. Rincon Unit 126R		
4. LOCATION OF WELL (Report location clearly and in accordance with any State requirement) At surface 2535' FSL and 485' FWL At proposed prod. zone Same as Surface		9. API WELL NO. 3003927314		
14. DISTANCE IN MILES AND DIRECTION FROM NEAREST TOWN OR POST OFFICE 40 miles Southeast from Bloomfield NM.		10. FIELD AND POOL OR WILDCAT Basin Dakota/ Mesa Verde		
15. DISTANCE FROM PROPOSED LOCATION TO NEAREST PROPERTY OR LEASE LINE FT (Also to nearest drg. Unit line, if any) 2535'		11. SEC., T., R., M., OR BLK. AND SURVEY OR AREA L Sec. 27, T-27-N, R-6-W		
16. NO. OF ACRES IN LEASE 2645.09		12. COUNTY OR PARISH Rio Arriba		
17. NO. OF ACRES ASSIGNED TO THIS WELL 320 5/2		13. STATE NM		
18. DISTANCE FROM PROPOSED LOCATION TO NEAREST WELL, DRILLING, COMPLETED OR APPLIED FOR, ON THIS LEASE, FT. 2225'		20. ROTARY OR CABLE TOOLS Rotary		
19. PROPOSED DEPTH 7700'		22. APPROX. DATE WORK WILL START ASAP		
21. ELEVATIONS (Show whether OF, RT, GR,) 6545'				
23. PROPOSED CASING AND CEMENTING PROGRAM				
SIZE OF HOLE	GRADE, SIZE OF CASING	WEIGHT PER FOOT	SETTING DEPTH	QUANTITY OF CEMENT
12-1/4"	H-40 9-5/8"	32.3#	350'	200 SACKS "B" TOC @ SURFACE
8-3/4"	K-55 7"	20#	2675'	405 SACKS TYPE III TOC @ SURFACE
6-1/4"	N-80 4-1/2"	11.6#	7700'	610 SACKS 65/35 POZ TYPE III TOC TIED INTO
				7" casing

"Expedited APD/ROW"

Pure plans to drill the Rincon Unit 126R, and complete in the Mesa Verde and the Basin Dakota and downhole commingle the two formations. This well will be an infill 80 acre.

BOP- One double gate BOP with 3-1/2" pipe and blind rams, one choke manifold with adjustable and positive chokes, an accumulator will hydraulically operate BOP with 1 1/2 times the necessary capacity to close the rams and retain a minimum of 200 psi above recharge. Rotating head will be utilized during the drilling of the 6-1/4" hole.
(Schematics are attached)

DRILLING OPERATIONS AUTHORIZED ARE
SUBJECT TO COMPLIANCE WITH ATTACHED
"GENERAL REQUIREMENTS".

This action is subject to technical and
procedural review pursuant to 43 CFR 3165.2
and appeal pursuant to 43 CFR 3165.4

HOLD C104 FOR NSL for Mesa Verde

IN ABOVE SPACE DESCRIBED PROGRAM: If proposal is to deepen, give data on present productive zone and proposed new productive zone. If proposal is to drill or deepen directionally, give pertinent data on subsurface locations and measured and true vertical depths. Give blowout preventer program, if any.

24.

SIGNED Mike C. Phillips TITLE San Juan Basin Area Drig Prod Foreman DATE 2/11/03
(This space for Federal or State office use)

PERMIT NO. _____ APPROVAL DATE _____

Application approval does not warrant or certify that the applicant holds legal or equitable title to those rights in the subject lease which would entitle the application to conduct operations thereon.
CONDITIONS OF APPROVAL, IF ANY:

APPROVED BY David J. Mankiewicz TITLE _____ DATE MAR 27 2003

*See Instructions On Reverse Side

Title 18 U.S.C. Section 1001, make it a crime for any person knowingly and willfully to make to any department or agency of the United States any false, fictitious or fraudulent statements or representations as to any matter within its jurisdiction.

NMOCD

DISTRICT I
1635 W. French Dr., Hobbs, N.M. 88240

DISTRICT II
611 South Flint, Artesia, N.M. 88210

DISTRICT III
1009 Elko Branch Rd., Aztec, N.M. 87410

DISTRICT IV
2040 South Pacheco, Santa Fe, NM 87505

State of New Mexico
Energy, Minerals & Natural Resources Department

Form C-102
Revised August 15, 2000

OIL CONSERVATION DIVISION

2040 South Pacheco
Santa Fe, NM 87505

RECEIVED

Submit to Appropriate District Office
State Lease - 4 Copies
Fee Lease - 3 Copies

FEB 11 PM 1:12

☐ AMENDED REPORT

WELL LOCATION AND ACREAGE DEDICATION PLAT

AP# Number 30-039-27314	Pool Code 71599	Pool Name Basin Dakota
Property Code 26629	Property Name RINCON UNIT	Well Number 126R
OGED No. 189071	Operator Name PURE RESOURCES	Elevation 6545'

10 Surface Location

UL or lot n.	Section	Township	Range	Lot Idn	Feet from the	North/South line	Feet from the	East/West line	County
L	27	27-N	6-W		2535	SOUTH	485	WEST	RIO ARriba

11 Bottom Hole Location If Different From Surface

UL or lot n.	Section	Township	Range	Lot Idn	Feet from the	North/South line	Feet from the	East/West line	County
Dedicated Acres			Joint or Infill		Consolidation Code		Order No.		

NO ALLOWABLE WILL BE ASSIGNED TO THIS COMPLETION UNTIL ALL INTERESTS HAVE BEEN CONSOLIDATED
OR A NON-STANDARD UNIT HAS BEEN APPROVED BY THE DIVISION

16

* PURE - RINCON UNIT No. 99A		QUARTER COR. FD 3 1/4" BC 1955 BLM	
LAT. = 36°32'43" N. LONG. = 107°27'44" W.		QUARTER COR. FD 3 1/4" BC 1955 BLM	
N 00-19-24 E 2621.04'(M)		N 88-40-52 E 2634.51'(M)	
485'		2535'	
86°		32°	
27		27	

17 OPERATOR CERTIFICATION

I hereby certify that the information contained herein
is true and complete to the best of my knowledge and
belief.

Signature

Mike Phillips

Printed Name
San Juan Basin Drilling/
Production Foreman

Title

Feb. 11th, 2003

Date

18 SURVEYOR CERTIFICATION

I hereby certify that the well location shown on this plat
was plotted from field notes of actual surveys made by
me or under my supervision, and that the same is true
and correct to the best of my belief.

Date

Signature and Seal of Professional Surveyor:

Certificate Number

DISTRICT I
1635 St. French Dr., Hobbs, N.M. 88240

DISTRICT II
611 South First, Artesia, N.M. 88210

DISTRICT III
1060 Elko Branch Rd., Aztec, N.M. 87410

DISTRICT IV
2040 South Pacheco, Santa Fe, NM 87505

State of New Mexico
Energy, Minerals & Natural Resources Department

Form C-102
Revised August 15, 2000

OIL CONSERVATION DIVISION

2040 South Pacheco
Santa Fe, NM 87505

Submit to Appropriate District Office
State Lease - 4 Copies
Fee Lease - 3 Copies

☐ AMENDED REPORT

WELL LOCATION AND ACREAGE DEDICATION PLAT

*API Number 30-039-		*Pool Code 72319		*Pool Name Blanco Mesa Verde	
*Property Code 26629		*Property Name RINCON UNIT			*Well Number 126R
*OGHD No. 189071		*Operator Name PURE RESOURCES			*Elevation 6545'

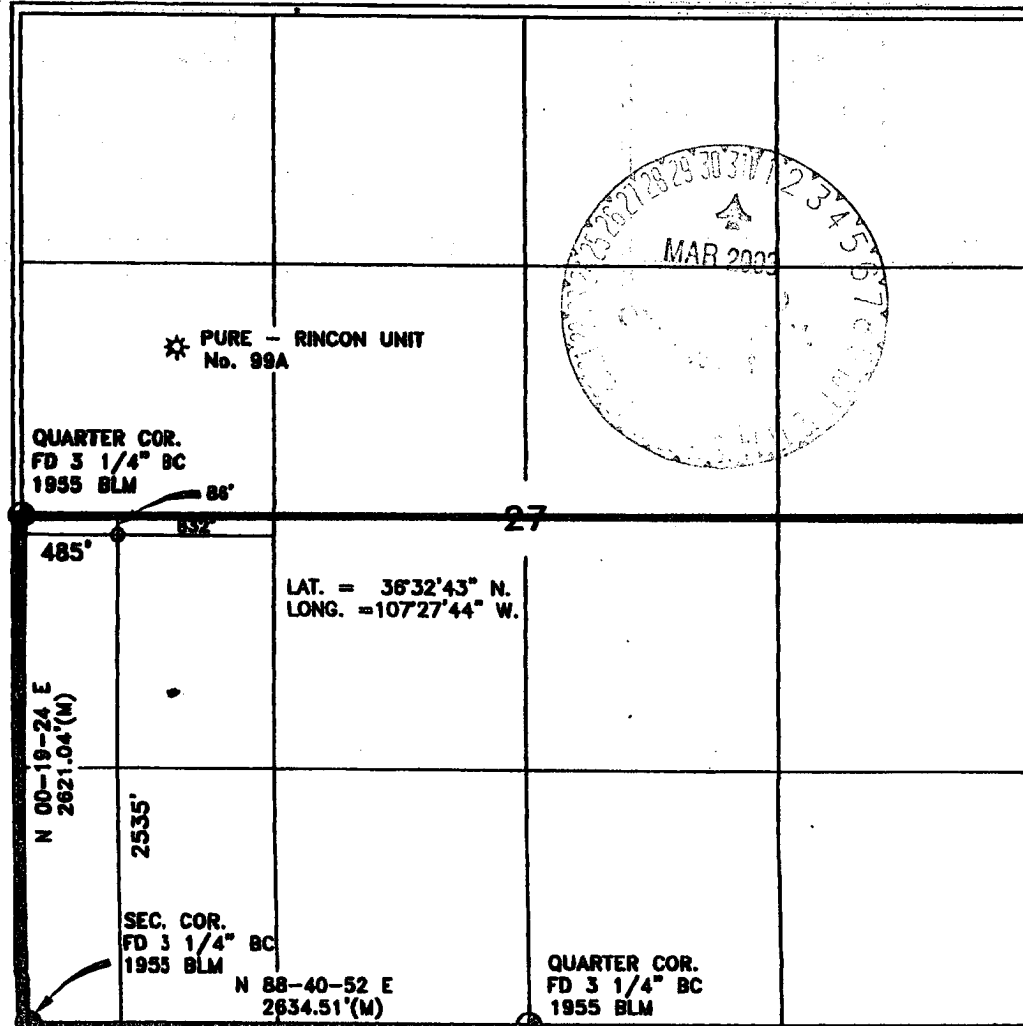
10 Surface Location

UL or lot no.	Section	Township	Range	Lot No.	Feet from the	North/South line	Feet from the	East/West line	County
L	27	27-N	6-W		2535	SOUTH	485	WEST	RIO ARriba

11 Bottom Hole Location If Different From Surface

UL or lot no.	Section	Township	Range	Lot No.	Feet from the	North/South line	Feet from the	East/West line	County
*Dedicated Acres		*Joint or Infill		*Consolidation Code		*Order No.			

NO ALLOWABLE WILL BE ASSIGNED TO THIS COMPLETION UNTIL ALL INTERESTS HAVE BEEN CONSOLIDATED
OR A NON-STANDARD UNIT HAS BEEN APPROVED BY THE DIVISION



17 OPERATOR CERTIFICATION

I hereby certify that the information contained herein is true and complete to the best of my knowledge and belief.

Mike Phillips
Signature

Mike Phillips

Printed Name
San Juan Basin Drilling/
Production Foreman

Title

Feb. 11th, 2003

Date

18 SURVEYOR CERTIFICATION

I hereby certify that the well location shown on this plat was plotted from field notes of actual surveys made by me or under my supervision, and that the same is true and correct to the best of my belief.

J. A. JOHNS
Date

San Juan Basin Drilling/
Production Foreman

Title

Feb. 11th, 2003

Date

Signature and Seal of Professional Surveyor:

14827

REGISTERED PROFESSIONAL SURVEYOR

Certificate Number

**PURE RESOURCES
RINCON UNIT WELL NO. 126R
2535' FSL, 485' FWL, SEC. 27, T-27-N, R-6-W**

8 POINT DRILLING PLAN

1. ESTIMATED FORMATION TOPS

<u>FORMATION NAME</u>	<u>DEPTH FROM GL</u>
San Jose	Surface
Ojo Alamo	2,260'
Kirtland Shale	2,635'
Pictured Cliffs	3,120'
Cliff House	4,810'
Point Lookout	5,310'
Mancos	5,740'
Tocito Sand	6,885'
Dakota	7,470'
ETD	7,635'
Permit TD	7,700'

2. OIL, GAS, WATER, OR OTHER MINERAL BEARING ZONES

<u>EXPECTED GAS ZONES</u>	<u>DEPTH FROM GL</u>
Fruitland Coal	3009'-3120'
Pictured Cliffs	3120'-3160'
Mesa Verde	4810-5740
Dakota	7470-7635

<u>EXPECTED WATER ZONES</u>	<u>DEPTH FROM GL</u>
Ojo Alamo	2260'

Possible water zones will be protected by 7" intermediate casing and/or 4-1/2" production strings, 7" cemented to surface, and 4-1/2" casing cement tied in to 7".

3. PRESSURE CONTROL BOP'S AND RELATED EQUIPMENT

Casing Head: 7" x 11" – 3000 psi W.P.

BOP Stack and Related Equipment: (See Attachment No. 1 & 2).

RINCON UNIT WELL NO. 126R
DRILLING PROGRAM – PAGE 2

One double-gate BOP with 4-1/2" and then 3-1/2" pipe and blind rams.

One choke manifold with adjustable and positive chokes.

An accumulator will hydraulically operate the BOP with 1-1/2 times the necessary capacity to close the rams and retain a minimum of 200psi above recharge. The remote unit will be located in the bottom "dog house" or on the ground between the "dog house" and the toolpushers trailer. A rotating head on top of the BOP stack will be utilized when necessary.

Testing Procedure:

The BOP and related equipment will be tested in accordance with the provisions of Onshore Oil and Gas Order No. 2.

BOP's will be operationally tested daily and each test will be logged in the IADC Daily Drilling Report.

Blooie Line:

The blooie line and related equipment will meet all requirements of Onshore Oil and Gas Order No. 2.

4. **CASING AND CEMENTINNG PROGRAM**

SURFACE CASING (Spud Mud)

<u>Age</u>	<u>Depth</u>	<u>Hole Size</u>	<u>Size</u>	<u>Weight</u>	<u>Grade</u>	<u>Thread</u>
New	0-350'	12-1/4"	9-5/8"	32.3#	H-40	ST&C

INTERMEDIATE CASING (FW Mud)

<u>Age</u>	<u>Depth</u>	<u>Hole Size</u>	<u>Size</u>	<u>Weight</u>	<u>Grade</u>	<u>Thread</u>
New	0-2675'	8-3/4"	7"	20#	K-55	ST&C

PRODUCTION CASING (Air Dusting)

<u>Age</u>	<u>Depth</u>	<u>Hole Size</u>	<u>Size</u>	<u>Weight</u>	<u>Grade</u>	<u>Thread</u>
New	0-TD	6-1/4"	4-1/2"	11.6#	L-80	LT&C

MINIMUM SAFETY FACTORS

Collapse: 1.125

Tension: 1.8

Burst: 1.0

RINCON UNIT WELL NO. 126R
DRILLING PROGRAM – PAGE 3

Cementing Program

1. The 9-5/8" surface casing will be cemented to the surface with 200 sacks of class "Type III" cement + 2% Cacl2 and 1/4# per cello flake. 14.6ppg, 1.39 yield. Represents 137% excess.
2. The 7" intermediate casing will be cemented to surface with; 325 sacks of Premium Lite FM cement + 8% gel + 2% CACL2, + 6.25#/sack LCM + .25 lbs/sk Cello Flake @ 12.1 ppg , + 2.11 yield, Followed by 80 sacks class "Type III" cement + 2% CACL2 + 1/4 #/sack cello-flake. @ 14.6 ppg, 1.39 yield. This represents 33% excess.
3. The 4-1/2" production casing will be cemented and tied into the intermediate casing with 85 sacks Premium Lite HS FM + .3% R-3,+ 2%CACL2 + 1/4 #/sack CF + .3% CD-32 + 5#/SK LCM-1 + 1% FL-52, 11.9 ppg, 2.37 yield. Followed by 525 sks Premium Lite HS FM + .3% R-3, + 2% CACL2 + 1/4# /sk CF + .3% CD-32 + 5#/sk LCM-1 + 1% FL-52. 12.5 ppg, 2.02 yield. Represents 45% excess.

Casing hardware for the production string to include guide shoe, float collar, centralized shoe joint and next five joints. Centralizers across producing zones.

Auxiliary Equipment

A kelly cock will be used with handle available. A full opening safety valve will be used when Kelly is out of string. Rotating head while air drilling. Will have vacuum diversion on blooie line.

5. **DRILLING FLUID PROGRAM**

<u>Depth</u>	<u>Type</u>	<u>Weight</u>	<u>Vis</u>	<u>W.L.</u>
0-350'	Spud Mud			N.C.
350-2675'	Fresh Water Gel	8.3-8.6	30-35	N.C
2675'-TD	Air	N.C.	N.C.	N.C.