

District I  
1625 N French Dr., Hobbs, NM 88240  
District II  
1301 W Grand Avenue, Artesia, NM 88210  
District III  
1000 Rio Brazos Rd., Aztec, NM 87410  
District IV  
1220 S St Francis Dr., Santa Fe, NM 87505

State of New Mexico  
Energy, Minerals & Natural Resources Department  
OIL CONSERVATION DIVISION  
1220 South St. Francis Dr.  
Santa Fe, NM 87505

Form C-102  
Revised October 12, 2005  
Submit to Appropriate District Office  
State Lease - 7 Copies  
Fee Lease - 3 Copies

"AS DRILLED PLAT"

AMMENDED REPORT

WELL LOCATION AND ACREAGE DEDICATION PLAT

<sup>1</sup> API Number 30-039-30715		<sup>2</sup> Pool Code 71599 / 72319		<sup>3</sup> Pool Name BASIN DAKOTA / BLANCO MESAVERDE	
<sup>4</sup> Property Code 7462		<sup>5</sup> Property Name SAN JUAN 28-6 UNIT			<sup>6</sup> Well Number 109N
<sup>7</sup> OGRID No. 14538		<sup>8</sup> Operator Name BURLINGTON RESOURCES OIL & GAS COMPANY LP			<sup>9</sup> Elevation 6490

<sup>10</sup> SURFACE LOCATION

UL or lot no.	Section	Township	Range	Lot Idn	Feet from the	North/South line	Feet from the	East/West line	County
J	1	27-N	6-W		1900	SOUTH	1490	EAST	RIO ARRIBA

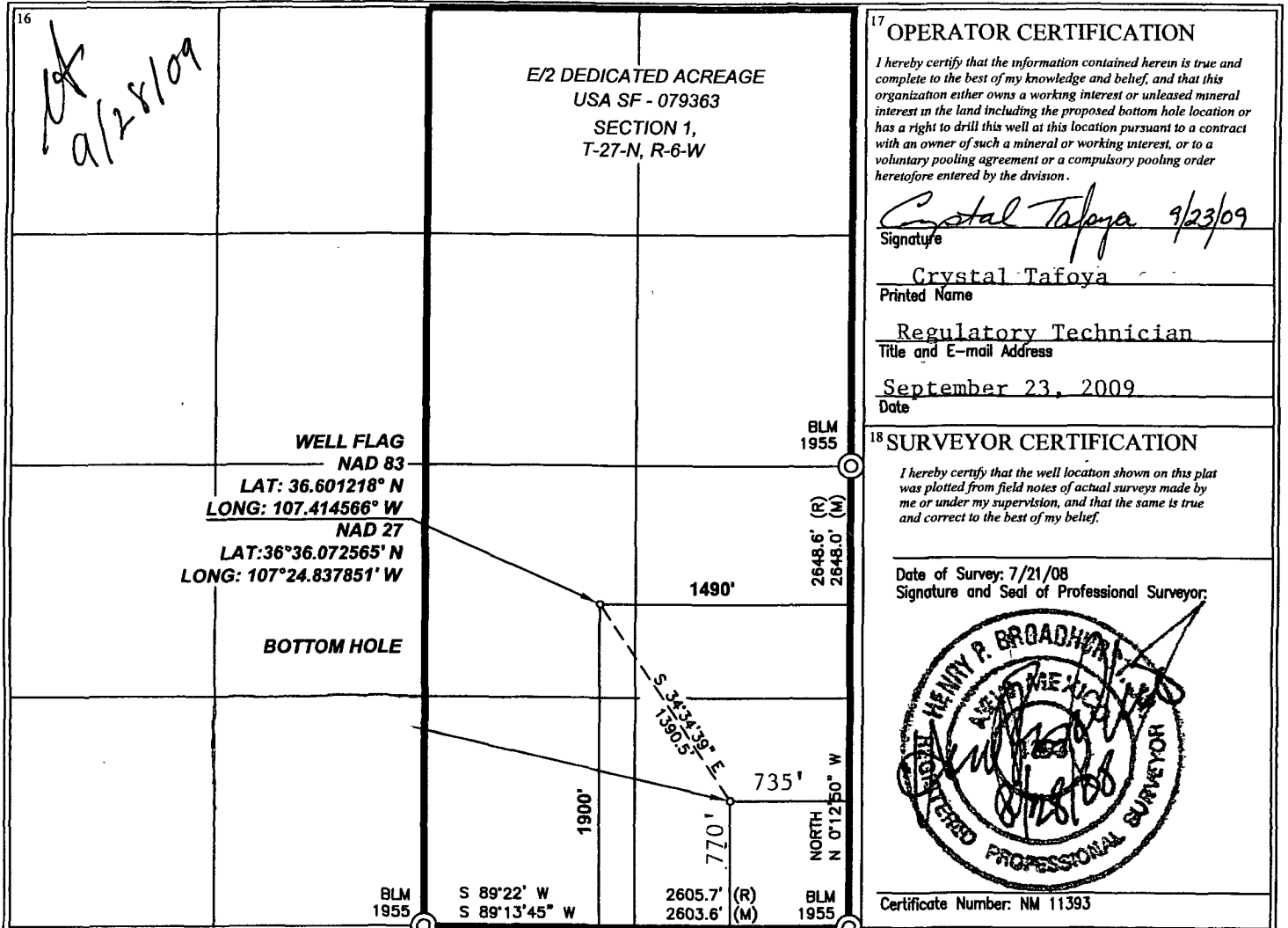
<sup>11</sup> Bottom Hole Location If Different From Surface

UL or lot no.	Section	Township	Range	Lot Idn	Feet from the	North/South line	Feet from the	East/West line	County
P	1	27-N	6-W		770	SOUTH	735	EAST	RIO ARRIBA

<sup>12</sup> Dedicated Acres 320. (0.8/2)	<sup>13</sup> Joint or Infill	<sup>14</sup> Consolidation Code	<sup>15</sup> Order No.	RCVD SEP 24 '09 OIL CONS. DIV.
---	-------------------------------	----------------------------------	-------------------------	-----------------------------------

NO ALLOWABLE WILL BE ASSIGNED TO THIS COMPLETION UNTIL ALL INTERESTS HAVE BEEN CONSOLIDATED OR A NON-STANDARD UNIT HAS BEEN APPROVED BY THE DIVISION

DIST. 3



<sup>17</sup> OPERATOR CERTIFICATION  
I hereby certify that the information contained herein is true and complete to the best of my knowledge and belief, and that this organization either owns a working interest or unleased mineral interest in the land including the proposed bottom hole location or has a right to drill this well at this location pursuant to a contract with an owner of such a mineral or working interest, or to a voluntary pooling agreement or a compulsory pooling order heretofore entered by the division.  
*Crystal Tafoya* 9/23/09  
Signature  
Crystal Tafoya  
Printed Name  
Regulatory Technician  
Title and E-mail Address  
September 23, 2009  
Date

<sup>18</sup> SURVEYOR CERTIFICATION  
I hereby certify that the well location shown on this plat was plotted from field notes of actual surveys made by me or under my supervision, and that the same is true and correct to the best of my belief.  
Date of Survey: 7/21/08  
Signature and Seal of Professional Surveyor:  
  
Certificate Number: NM 11393



**COP Deviation Report**  
**SAN JUAN 28-6 UNIT #109N**

<b>Operator</b> BURLINGTON RESOURCES OIL & GAS COMPANY LP	<b>Legal WellName</b> SAN JUAN 28-6 UNIT #109N	<b>API / UWI</b> 3003930715	<b>County</b> RIO ARRIBA	<b>State/Province</b> NEW MEXICO
<b>Surface Legal Location</b> 001-027N-006W-J	<b>N/S Dist (ft)</b> 1,900.00	<b>N/S Ref</b> FSL	<b>E/W Dist (ft)</b> 1,490.00	<b>E/W Ref</b> FEL

<b>Survey Data</b>					
Date	MD (ftKB)	Incl (°)	Method	Survey Company	
6/20/2009	240.00	0.42	MWD	Scientific Drilling	
6/20/2009	271.00	0.89	MWD	Scientific Drilling	
6/20/2009	301.00	1.81	MWD	Scientific Drilling	
6/20/2009	332.00	2.43	MWD	Scientific Drilling	
6/20/2009	363.00	3.44	MWD	Scientific Drilling	
6/20/2009	393.00	4.09	MWD	Scientific Drilling	
6/20/2009	424.00	5.00	MWD	Scientific Drilling	
6/20/2009	454.00	5.58	MWD	Scientific Drilling	
6/20/2009	485.00	6.13	MWD	Scientific Drilling	
6/20/2009	516.00	6.92	MWD	Scientific Drilling	
6/20/2009	546.00	7.58	MWD	Scientific Drilling	
6/20/2009	577.00	8.27	MWD	Scientific Drilling	
6/20/2009	608.00	8.86	MWD	Scientific Drilling	
6/20/2009	637.00	9.59	MWD	Scientific Drilling	
6/20/2009	667.00	10.28	MWD	Scientific Drilling	
6/20/2009	697.00	10.93	MWD	Scientific Drilling	
6/20/2009	728.00	12.00	MWD	Scientific Drilling	
6/21/2009	759.00	12.43	MWD	Scientific Drilling	
6/21/2009	790.00	13.34	MWD	Scientific Drilling	
6/22/2009	821.00	13.79	MWD	Scientific Drilling	
6/22/2009	869.00	14.89	MWD	Scientific Drilling	
6/22/2009	914.00	15.62	MWD	Scientific Drilling	
6/22/2009	959.00	16.67	MWD	Scientific Drilling	
6/22/2009	1,004.00	17.55	MWD	Scientific Drilling	
6/22/2009	1,049.00	18.82	MWD	Scientific Drilling	
6/22/2009	1,094.00	20.56	MWD	Scientific Drilling	
6/22/2009	1,139.00	21.81	MWD	Scientific Drilling	
6/22/2009	1,184.00	22.76	MWD	Scientific Drilling	
6/22/2009	1,229.00	23.24	MWD	Scientific Drilling	
6/22/2009	1,274.00	23.49	MWD	Scientific Drilling	
6/23/2009	1,319.00	23.43	MWD	Scientific Drilling	
6/23/2009	1,364.00	24.02	MWD	Scientific Drilling	
6/23/2009	1,409.00	23.89	MWD	Scientific Drilling	
6/23/2009	1,454.00	23.96	MWD	Scientific Drilling	
6/23/2009	1,499.00	23.96	MWD	Scientific Drilling	

I, the undersigned, certify that I acting in my capacity as \_\_\_\_\_ for ConocoPhillips Company, am authorized by said Company to make this report; and that said report was prepared under my supervision and directions, and that the facts stated herein are true to the best of my knowledge and belief.

Subscribed and sworn to me this \_\_\_\_\_

Notary Public in and for San Juan County, New Mexico

My Commission expires \_\_\_\_\_

**Survey Data**

Date	MD (ftKB)	Incl (°)	Method	Survey Company
6/23/2009	1,544.00	24.28	MWD	Scientific Drilling
6/23/2009	1,634.00	24.65	MWD	Scientific Drilling
6/23/2009	1,724.00	25.10	MWD	Scientific Drilling
6/23/2009	1,814.00	24.67	MWD	Scientific Drilling
6/23/2009	1,904.00	24.98	MWD	Scientific Drilling
6/23/2009	1,994.00	25.12	MWD	Scientific Drilling
6/23/2009	2,084.00	25.36	MWD	Scientific Drilling
6/23/2009	2,174.00	24.92	MWD	Scientific Drilling
6/23/2009	2,264.00	24.60	MWD	Scientific Drilling
6/23/2009	2,354.00	24.49	MWD	Scientific Drilling
6/23/2009	2,444.00	24.24	MWD	Scientific Drilling
6/23/2009	2,534.00	24.62	MWD	Scientific Drilling
6/23/2009	2,624.00	25.42	MWD	Scientific Drilling
6/23/2009	2,714.00	25.54	MWD	Scientific Drilling
6/23/2009	2,804.00	26.51	MWD	Scientific Drilling
6/24/2009	2,894.00	26.71	MWD	Scientific Drilling
6/24/2009	2,984.00	26.83	MWD	Scientific Drilling
6/24/2009	3,073.00	26.83	MWD	Scientific Drilling
6/24/2009	3,163.00	26.03	MWD	Scientific Drilling
6/24/2009	3,253.00	24.90	MWD	Scientific Drilling
6/24/2009	3,298.00	24.05	MWD	Scientific Drilling
6/24/2009	3,343.00	23.86	MWD	Scientific Drilling
6/24/2009	3,388.00	22.90	MWD	Scientific Drilling
6/24/2009	3,478.00	21.77	MWD	Scientific Drilling
6/24/2009	3,523.00	22.66	MWD	Scientific Drilling
6/24/2009	3,568.00	22.84	MWD	Scientific Drilling
6/24/2009	3,613.00	22.89	MWD	Scientific Drilling
6/24/2009	3,658.00	22.06	MWD	Scientific Drilling
6/24/2009	3,703.00	20.20	MWD	Scientific Drilling
6/24/2009	3,748.00	18.02	MWD	Scientific Drilling
6/24/2009	3,793.00	16.39	MWD	Scientific Drilling
6/24/2009	3,838.00	15.57	MWD	Scientific Drilling
6/24/2009	3,883.00	14.72	MWD	Scientific Drilling
6/24/2009	3,928.00	12.98	MWD	Scientific Drilling
6/24/2009	3,973.00	11.13	MWD	Scientific Drilling
6/24/2009	4,018.00	9.64	MWD	Scientific Drilling
6/24/2009	4,063.00	8.93	MWD	Scientific Drilling
6/24/2009	4,108.00	8.27	MWD	Scientific Drilling
6/24/2009	4,153.00	7.40	MWD	Scientific Drilling

I, the undersigned, certify that I acting in my capacity as \_\_\_\_\_ for ConocoPhillips Company, am authorized by said Company to make this report; and that said report was prepared under my supervision and directions, and that the facts stated herein are true to the best of my knowledge and belief.

Subscribed and sworn to me this \_\_\_\_\_

Notary Public in and for San Juan County, New Mexico

My Commission expires \_\_\_\_\_

Survey Data

Date	MD (ftKB)	Incl (°)	Method	Survey Company
6/24/2009	4,198.00	6.42	MWD	Scientific Drilling
6/25/2009	4,243.00	5.38	MWD	Scientific Drilling
6/25/2009	4,288.00	4.58	MWD	Scientific Drilling
6/25/2009	4,333.00	3.76	MWD	Scientific Drilling
6/25/2009	4,378.00	3.02	MWD	Scientific Drilling
6/25/2009	4,423.00	2.42	MWD	Scientific Drilling
6/25/2009	4,468.00	2.23	MWD	Scientific Drilling
6/25/2009	4,513.00	1.74	MWD	Scientific Drilling
6/25/2009	4,546.00	1.64	MWD	Scientific Drilling
6/25/2009	4,599.00	1.48	MWD	Scientific Drilling
7/2/2009	7,906.00	0.75	FINAL BHS	PHOENIX

RCVD SEP 24 '09  
OIL CONS. DIV.  
DIST. 3

I, the undersigned, certify that I acting in my capacity as Drilling Engineer for ConocoPhillips Company, am authorized by said Company to make this report; and that said report was prepared under my supervision and directions, and that the facts stated herein are true to the best of my knowledge and belief.

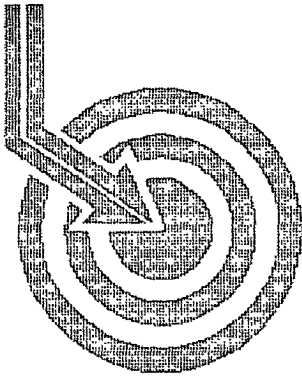
*[Signature]*

Subscribed and sworn to me this Sept 22, 2009

*[Signature]*

Notary Public in and for San Juan County, New Mexico

My Commission expires 10/12/2010



# Scientific Drilling

RCVD SEP 24 '09

OIL CONS. DIV.

DIST. 3

## BURLINGTON RESOURCES

Field: San Juan  
Site: Rio Arriba County, NM  
Well: San Juan 28-6 #109N  
Wellpath: DH - Job #33D0609113  
Survey: 06/19/09-06/25/09

API # 30.039.30715

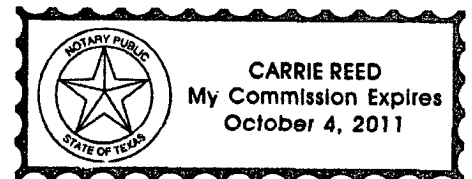
Blanco Mesaverde | Basin Dakota

This survey is correct to the best of my knowledge and is supported by actual field data.

.....*Richard*.....Company Representative

Notorized this date 9th of July, 2009.

*Carrie Reed*  
Notary Signature  
County of Midland  
State of Texas





# Scientific Drilling International Survey Report

<b>Company:</b> BURLINGTON RESOURCES	<b>Date:</b> 07/10/2009	<b>Time:</b> 10:44:05	<b>Page:</b> 1
<b>Field:</b> San Juan	<b>Co-ordinate(NE) Reference:</b> Site: Rio Arriba County, NM, True North		
<b>Site:</b> Rio Arriba County, NM	<b>Vertical (TVD) Reference:</b> SITE 0.0		
<b>Well:</b> San Juan 28-6 #109N	<b>Section (VS) Reference:</b> Well (0.00N,0.00E,145.93Azi)		
<b>Wellpath:</b> DH - Job #33D0609113	<b>Survey Calculation Method:</b> Minimum Curvature	<b>Db:</b> Sybase	

<b>Survey:</b> 06/19/09-06/25/09 E-field 0'-4546'	<b>Start Date:</b> 06/19/2009		
<b>Company:</b> Scientific Drilling Internatio	<b>Engineer:</b> Burrus/Webb/Wagner/Blosser		
<b>Tool:</b> E-field;E-field	<b>Tied-to:</b> From Surface		

**Survey**

MD ft	Incl deg	Azim deg	TVD ft	VS ft	N/S ft	E/W ft	DLS deg/100ft	ClsD ft	ClsA deg
0.00	0.00	0.00	0.00	0.00	0.00	0.00	0.00	0.00	0.00
240.00	0.42	205.23	240.00	0.45	-0.80	-0.37	0.17	0.88	205.23
271.00	0.89	207.80	271.00	0.62	-1.11	-0.54	1.52	1.23	205.73
301.00	1.81	182.89	300.99	1.11	-1.79	-0.67	3.57	1.91	200.46
332.00	2.43	172.82	331.97	2.09	-2.93	-0.61	2.33	2.99	191.77
363.00	3.44	166.62	362.93	3.54	-4.49	-0.31	3.41	4.50	183.99
393.00	4.09	167.42	392.86	5.38	-6.41	0.13	2.17	6.41	178.86
424.00	5.00	164.72	423.76	7.69	-8.79	0.72	3.01	8.82	175.29
454.00	5.58	167.86	453.63	10.28	-11.48	1.38	2.16	11.56	173.16
485.00	6.13	165.13	484.47	13.24	-14.55	2.12	1.99	14.70	171.72
516.00	6.92	161.64	515.27	16.60	-17.92	3.13	2.85	18.19	170.09
546.00	7.58	159.16	545.03	20.27	-21.49	4.40	2.43	21.93	168.42
577.00	8.27	157.17	575.74	24.44	-25.45	6.00	2.40	26.15	166.74
608.00	8.86	153.93	606.39	28.99	-29.65	7.91	2.46	30.69	165.06
637.00	9.59	154.55	635.01	33.59	-33.84	9.93	2.54	35.27	163.65
667.00	10.28	154.75	664.56	38.71	-38.52	12.15	2.30	40.39	162.50
697.00	10.93	151.54	694.05	44.19	-43.44	14.64	2.93	45.84	161.37
728.00	12.00	149.25	724.43	50.33	-48.79	17.69	3.75	51.90	160.07
759.00	12.43	149.07	754.73	56.88	-54.42	21.05	1.39	58.35	158.85
790.00	13.34	149.94	784.95	63.78	-60.38	24.56	3.00	65.19	157.87
821.00	13.79	149.13	815.09	71.03	-66.65	28.25	1.58	72.39	157.03
869.00	14.89	146.54	861.59	82.91	-76.70	34.58	2.65	84.14	155.73
914.00	15.62	146.65	905.00	94.75	-86.59	41.10	1.62	95.85	154.61
959.00	16.67	146.89	948.23	107.26	-97.06	47.96	2.34	108.26	153.70
1004.00	17.55	147.28	991.24	120.50	-108.17	55.15	1.97	121.42	152.98
1049.00	18.82	146.67	1033.99	134.54	-119.94	62.81	2.85	135.39	152.36
1094.00	20.56	145.32	1076.36	149.70	-132.51	71.29	4.00	150.47	151.72
1139.00	21.81	145.50	1118.31	165.96	-145.89	80.52	2.78	166.64	151.10
1184.00	22.76	144.97	1159.95	183.02	-159.91	90.25	2.16	183.62	150.56
1229.00	23.24	144.99	1201.37	200.61	-174.31	100.34	1.07	201.13	150.07
1274.00	23.49	144.80	1242.68	218.45	-188.91	110.61	0.58	218.91	149.65
1319.00	23.43	144.83	1283.97	236.36	-203.55	120.93	0.14	236.77	149.29
1364.00	24.02	144.02	1325.16	254.46	-218.28	131.47	1.50	254.81	148.94
1409.00	23.89	143.95	1366.29	272.72	-233.06	142.21	0.30	273.02	148.61
1454.00	23.96	143.64	1407.42	290.96	-247.78	152.99	0.32	291.21	148.31
1499.00	23.96	142.85	1448.54	309.21	-262.42	163.92	0.71	309.41	148.01
1544.00	24.28	143.32	1489.61	327.58	-277.13	174.97	0.83	327.74	147.73
1634.00	24.65	145.33	1571.53	364.83	-307.40	196.70	1.01	364.95	147.39
1724.00	25.10	148.31	1653.19	402.67	-339.08	217.40	1.48	402.79	147.33
1814.00	24.67	147.42	1734.83	440.52	-371.15	237.54	0.63	440.66	147.38
1904.00	24.98	147.71	1816.51	478.29	-403.04	257.81	0.37	478.45	147.39
1994.00	25.12	147.15	1898.05	516.38	-435.16	278.32	0.31	516.55	147.40
2084.00	25.63	146.43	1979.37	554.95	-467.43	299.45	0.66	555.12	147.35
2174.00	24.92	146.03	2060.75	593.37	-499.37	320.81	0.81	593.54	147.28
2264.00	24.60	145.49	2142.48	631.07	-530.53	342.02	0.44	631.22	147.19
2354.00	24.49	145.27	2224.34	668.45	-561.30	363.26	0.16	668.59	147.09
2444.00	24.24	145.97	2306.33	705.58	-591.94	384.22	0.42	705.71	147.01
2534.00	24.62	145.60	2388.27	742.80	-622.72	405.15	0.46	742.92	146.95
2624.00	25.42	146.24	2469.82	780.86	-654.25	426.48	0.94	780.98	146.90



# Scientific Drilling International Survey Report

<b>Company:</b> BURLINGTON RESOURCES	<b>Date:</b> 07/10/2009	<b>Time:</b> 10:44:05	<b>Page:</b> 2
<b>Field:</b> San Juan	<b>Co-ordinate(NE) Reference:</b>	<b>Site:</b> Rio Arriba County, NM, True North	
<b>Site:</b> Rio Arriba County, NM	<b>Vertical (TVD) Reference:</b>	<b>SITE 0.0</b>	
<b>Well:</b> San Juan 28-6 #109N	<b>Section (VS) Reference:</b>	<b>Well (0.00N,0.00E,145.93Azi)</b>	
<b>Wellpath:</b> DH - Job #33D0609113	<b>Survey Calculation Method:</b>	<b>Minimum Curvature</b>	<b>Db:</b> Sybase

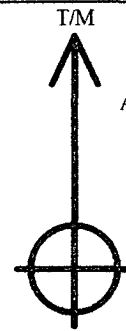
**Survey**

MD ft	Incl deg	Azim deg	TVD ft	VS ft	N/S ft	E/W ft	DLS deg/100ft	ClsD ft	ClsA deg
2714.00	25.54	145.19	2551.07	819.58	-686.24	448.29	0.52	819.68	146.85
2804.00	26.51	145.33	2631.94	859.07	-718.69	470.79	1.08	859.16	146.77
2894.00	26.71	145.36	2712.41	899.38	-751.85	493.71	0.22	899.46	146.71
2984.00	26.83	145.29	2792.76	939.91	-785.18	516.78	0.14	939.98	146.65
3073.00	26.83	145.86	2872.18	980.08	-818.32	539.49	0.29	980.15	146.60
3163.00	26.03	144.67	2952.78	1020.13	-851.24	562.31	1.07	1020.19	146.55
3253.00	24.90	142.94	3034.03	1058.80	-882.47	585.14	1.50	1058.84	146.45
3298.00	24.05	141.68	3074.99	1077.40	-897.23	596.54	2.22	1077.44	146.38
3343.00	23.86	142.17	3116.11	1095.63	-911.61	607.81	0.61	1095.65	146.31
3388.00	22.90	144.09	3157.42	1113.46	-925.89	618.52	2.72	1113.48	146.26
3433.00	21.31	146.75	3199.11	1130.39	-939.82	628.14	4.17	1130.41	146.24
3478.00	21.77	149.13	3240.97	1146.90	-953.82	636.91	2.19	1146.92	146.27
3523.00	22.66	150.76	3282.63	1163.87	-968.55	645.42	2.41	1163.90	146.32
3568.00	22.84	150.09	3324.13	1181.22	-983.68	654.01	0.70	1181.26	146.38
3613.00	22.89	150.61	3365.59	1198.65	-998.88	662.66	0.46	1198.70	146.44
3658.00	22.06	150.62	3407.17	1215.80	-1013.87	671.10	1.84	1215.86	146.50
3703.00	20.20	148.01	3449.15	1231.98	-1027.82	679.37	4.63	1232.05	146.54
3748.00	18.02	145.38	3491.66	1246.71	-1040.14	687.44	5.21	1246.78	146.54
3793.00	16.39	143.42	3534.65	1260.01	-1050.97	695.18	3.84	1260.08	146.52
3838.00	15.57	142.84	3577.91	1272.39	-1060.88	702.61	1.86	1272.45	146.48
3883.00	14.72	141.90	3621.35	1284.12	-1070.19	709.78	1.97	1284.17	146.45
3928.00	12.98	142.70	3665.04	1294.87	-1078.71	716.38	3.89	1294.92	146.41
3973.00	11.13	143.73	3709.04	1304.26	-1086.23	722.01	4.14	1304.30	146.39
4018.00	9.64	143.76	3753.30	1312.36	-1092.77	726.81	3.31	1312.40	146.37
4063.00	8.93	143.36	3797.71	1319.62	-1098.62	731.12	1.58	1319.65	146.36
4108.00	8.27	142.39	3842.21	1326.34	-1103.98	735.18	1.50	1326.37	146.34
4153.00	7.40	140.55	3886.79	1332.45	-1108.78	738.99	2.01	1332.48	146.32
4198.00	6.42	142.61	3931.46	1337.85	-1113.02	742.36	2.25	1337.88	146.30
4243.00	5.38	143.53	3976.22	1342.47	-1116.72	745.14	2.32	1342.50	146.29
4288.00	4.58	141.27	4021.05	1346.37	-1119.81	747.52	1.83	1346.39	146.28
4333.00	3.76	143.71	4065.93	1349.63	-1122.40	749.52	1.86	1349.66	146.27
4378.00	3.02	143.78	4110.85	1352.29	-1124.55	751.09	1.64	1352.31	146.26
4423.00	2.42	144.61	4155.80	1354.43	-1126.28	752.34	1.34	1354.45	146.26
4468.00	2.23	149.70	4200.77	1356.25	-1127.81	753.34	0.62	1356.27	146.26
4513.00	1.74	148.85	4245.74	1357.81	-1129.15	754.13	1.09	1357.83	146.26
4546.00	1.64	149.62	4278.72	1358.78	-1129.99	754.63	0.31	1358.80	146.26



Scientific  
Drilling

Field: San Juan  
Site: Rio Arriba County, NM  
Well: San Juan 28-6 #109N  
Wellpath: DH - Job #33D0609113  
Survey: 06/19/09-06/25/09



Azimuths to True North  
Magnetic North: 0.00°

Magnetic Field  
Strength: 0nT  
Dip Angle: 0.00°  
Date: 07/10/2009  
Model: igrf2000

West(-)/East(+) [200ft/in]

South(-)/North(+) [200ft/in]

