

State of New Mexico  
Energy Minerals and Natural Resources

Department  
Oil Conservation Division  
1220 South St. Francis Dr.  
Santa Fe, NM 87505

For temporary pits, closed-loop systems, and below-grade tanks, submit to the appropriate NMOCD District Office

For permanent pits and exceptions submit to the Santa Fe Environmental Bureau office and provide a copy to the appropriate NMOCD District Office.

4030

Pit, Closed-Loop System, Below-Grade Tank, or  
Proposed Alternative Method Permit or Closure Plan Application

- Type of action:
- ☐ Permit of a pit, closed-loop system, below-grade tank, or proposed alternative method
- ☐ Closure of a pit, closed-loop system, below-grade tank, or proposed alternative method
- ☐ Modification to an existing permit
- ☒ Closure plan only submitted for an existing permitted or non-permitted pit, closed-loop system, below-grade tank, or proposed alternative method

**Instructions: Please submit one application (Form C-144) per individual pit, closed-loop system, below-grade tank or alternative request**

Please be advised that approval of this request does not relieve the operator of liability should operations result in pollution of surface water, ground water or the environment. Nor does approval relieve the operator of its responsibility to comply with any other applicable governmental authority's rules, regulations or ordinances.

1  
Operator: ConocoPhillips Company OGRID#: 217817  
Address: PO Box 4289, Farmington, NM 87499  
Facility or well name: SAN JUAN 31-6 UNIT 31P  
API Number: 30-039-30357 OCD Permit Number: \_\_\_\_\_  
U/L or Qtr/Qtr: P(SE/SE) Section: 35 Township: 31N Range: 6W County: Rio Arriba  
Center of Proposed Design: Latitude: 36.85119 °N Longitude: 107.42606 °W NAD: ☐ 1927 ☒ 1983  
Surface Owner: ☒ Federal ☐ State ☐ Private ☐ Tribal Trust or Indian Allotment

2  
☒ **Pit:** Subsection F or G of 19.15.17.11 NMAC  
Temporary: ☒ Drilling ☐ Workover  
☐ Permanent ☐ Emergency ☒ Cavitation ☐ P&A  
☒ Lined ☐ Unlined Liner type: Thickness 12 mil ☒ LLDPE ☐ HDPE ☐ PVC ☐ Other \_\_\_\_\_  
☒ String-Reinforced  
Liner Seams ☒ Welded ☒ Factory ☐ Other \_\_\_\_\_ Volume: 4400 bbl Dimensions L 65' x W 45' x D 10'

3  
☐ **Closed-loop System:** Subsection H of 19.15.17.11 NMAC  
Type of Operation: ☐ P&A ☐ Drilling a new well ☐ Workover or Drilling (Applies to activities which require prior approval of a permit or notice of intent)  
☐ Drying Pad ☐ Above Ground Steel Tanks ☐ Haul-off Bins ☐ Other \_\_\_\_\_  
☐ Lined ☐ Unlined Liner type: Thickness \_\_\_\_\_ mil ☐ LLDPE ☐ HDPE ☐ PVD ☐ Other \_\_\_\_\_  
Liner Seams: ☐ Welded ☐ Factory ☐ Other \_\_\_\_\_

4  
☐ **Below-grade tank:** Subsection I of 19.15.17.11 NMAC  
Volume: \_\_\_\_\_ bbl Type of fluid: \_\_\_\_\_  
Tank Construction material: \_\_\_\_\_  
☐ Secondary containment with leak detection ☐ Visible sidewalls, liner, 6-inch lift and automatic overflow shut-off  
☐ Visible sidewalls and liner ☐ Visible sidewalls only ☐ Other \_\_\_\_\_  
Liner Type: Thickness \_\_\_\_\_ mil ☐ HDPE ☐ PVC ☐ Other \_\_\_\_\_

5  
☐ **Alternative Method:**  
Submittal of an exception request is required. Exceptions must be submitted to the Santa Fe Environmental Bureau office for consideration of approval.



6	<p><b>Fencing:</b> Subsection D of 19.15.17.11 NMAC (<i>Applies to permanent pit, temporary pits, and below-grade tanks</i>)</p> <p><input type="checkbox"/> Chain link, six feet in height, two strands of barbed wire at top (<i>Required if located within 1000 feet of a permanent residence, school, hospital, institution or church</i>)</p> <p><input type="checkbox"/> Four foot height, four strands of barbed wire evenly spaced between one and four feet</p> <p><input checked="" type="checkbox"/> Alternate. Please specify <u>4' hogwire fence with a single strand of barbed wire on top.</u></p>
7	<p><b>Netting:</b> Subsection E of 19.15.17.11 NMAC (<i>Applies to permanent pits and permanent open top tanks</i>)</p> <p><input type="checkbox"/> Screen <input type="checkbox"/> Netting <input type="checkbox"/> Other _____</p> <p><input type="checkbox"/> Monthly inspections (<i>If netting or screening is not physically feasible</i>)</p>
8	<p><b>Signs:</b> Subsection C of 19.15.17.11 NMAC</p> <p><input type="checkbox"/> 12" X 24", 2" lettering, providing Operator's name, site location, and emergency telephone numbers</p> <p><input checked="" type="checkbox"/> Signed in compliance with 19.15.3.103 NMAC</p>
9	<p><b>Administrative Approvals and Exceptions:</b></p> <p>Justifications and/or demonstrations of equivalency are required. Please refer to 19.15.17 NMAC for guidance.</p> <p><b>Please check a box if one or more of the following is requested, if not leave blank:</b></p> <p><input type="checkbox"/> Administrative approval(s): Requests must be submitted to the appropriate division district of the Santa Fe Environmental Bureau office for consideration of approval. (Fencing/BGT Liner)</p> <p><input type="checkbox"/> Exception(s): Requests must be submitted to the Santa Fe Environmental Bureau office for consideration of approval.</p>
10	<p><b>Siting Criteria (regarding permitting) 19.15.17.10 NMAC</b></p> <p><i>Instructions: The applicant must demonstrate compliance for each siting criteria below in the application. Recommendations of acceptable source material are provided below. Requests regarding changes to certain siting criteria may require administrative approval from the appropriate district office or may be considered an exception which must be submitted to the Santa Fe Environmental Bureau Office for consideration of approval. Applicant must attach justification for request. Please refer to 19.15.17.10 NMAC for guidance. Siting criteria does not apply to drying pads or above grade-tanks associated with a closed-loop system.</i></p> <p><b>Ground water is less than 50 feet below the bottom of the temporary pit, permanent pit, or below-grade tank.</b></p> <p>- NM Office of the State Engineer - iWATERS database search; USGS; Data obtained from nearby wells</p> <p><b>Within 300 feet of a continuously flowing watercourse, or 200 feet of any other watercourse, lakebed, sinkhole, or playa lake (measured from the ordinary high-water mark).</b></p> <p>- Topographic map; Visual inspection (certification) of the proposed site</p> <p><b>Within 300 feet from a permanent residence, school, hospital, institution, or church in existence at the time of initial application.</b></p> <p>(<i>Applies to temporary, emergency, or cavitation pits and below-grade tanks</i>)</p> <p>- Visual inspection (certification) of the proposed site; Aerial photo; Satellite image</p> <p><b>Within 1000 feet from a permanent residence, school, hospital, institution, or church in existence at the time of initial application.</b></p> <p>(<i>Applied to permanent pits</i>)</p> <p>- Visual inspection (certification) of the proposed site; Aerial photo; Satellite image</p> <p><b>Within 500 horizontal feet of a private, domestic fresh water well or spring that less than five households use for domestic or stock watering purposes, or within 1000 horizontal feet of any other fresh water well or spring, in existence at the time of initial application.</b></p> <p>- NM Office of the State Engineer - iWATERS database search; Visual inspection (certification) of the proposed site.</p> <p><b>Within incorporated municipal boundaries or within a defined municipal fresh water well field covered under a municipal ordinance adopted pursuant to NMSA 1978, Section 3-27-3, as amended</b></p> <p>- Written confirmation or verification from the municipality; Written approval obtained from the municipality</p> <p><b>Within 500 feet of a wetland.</b></p> <p>- US Fish and Wildlife Wetland Identification map; Topographic map; Visual inspection (certification) of the proposed site</p> <p><b>Within the area overlying a subsurface mine.</b></p> <p>- Written confirmation or verification or map from the NM EMNRD - Mining and Mineral Division</p> <p><b>Within an unstable area.</b></p> <p>- Engineering measures incorporated into the design; NM Bureau of Geology &amp; Mineral Resources; USGS; NM Geological Society; Topographic map</p> <p><b>Within a 100-year floodplain</b></p> <p>- FEMA map</p>

<input type="checkbox"/> Yes	<input type="checkbox"/> No
<input type="checkbox"/> Yes	<input type="checkbox"/> No
<input type="checkbox"/> Yes	<input type="checkbox"/> No
<input type="checkbox"/> NA	
<input type="checkbox"/> Yes	<input type="checkbox"/> No
<input type="checkbox"/> NA	
<input type="checkbox"/> Yes	<input type="checkbox"/> No
<input type="checkbox"/> Yes	<input type="checkbox"/> No
<input type="checkbox"/> Yes	<input type="checkbox"/> No
<input type="checkbox"/> Yes	<input type="checkbox"/> No
<input type="checkbox"/> Yes	<input type="checkbox"/> No

11

**Temporary Pits, Emergency Pits and Below-grade Tanks Permit Application Attachment Checklist** Subsection B of 19.15.17.9 NMAC  
*Instructions: Each of the following items must be attached to the application. Please indicate, by a check mark in the box, that the documents are attached.*

- ☐ Hydrogeologic Report (Below-grade Tanks) - based upon the requirements of Paragraph (4) of Subsection B of 19.15.17.9 NMAC
- ☐ Hydrogeologic Data (Temporary and Emergency Pits) - based upon the requirements of Paragraph (2) of Subsection B of 19.15.17.9
- ☐ Siting Criteria Compliance Demonstrations - based upon the appropriate requirements of 19.15.17.10 NMAC
- ☐ Design Plan - based upon the appropriate requirements of 19.15.17.11 NMAC
- ☐ Operating and Maintenance Plan - based upon the appropriate requirements of 19.15.17.12 NMAC
- ☐ Closure Plan (Please complete Boxes 14 through 18, if applicable) - based upon the appropriate requirements of Subsection C of 19.15.17.9 NMAC and 19.15.17.13 NMAC

☐ Previously Approved Design (attach copy of design)      API \_\_\_\_\_ or Permit \_\_\_\_\_

12

**Closed-loop Systems Permit Application Attachment Checklist:** Subsection B of 19.15.17.9 NMAC

*Instructions: Each of the following items must be attached to the application. Please indicate, by a check mark in the box, that the documents are attached.*

- ☐ Geologic and Hydrogeologic Data (only for on-site closure) - based upon the requirements of Paragraph (3) of Subsection B of 19.15.17.9
- ☐ Siting Criteria Compliance Demonstrations (only for on-site closure) - based upon the appropriate requirements of 19.15.17.10 NMAC
- ☐ Design Plan - based upon the appropriate requirements of 19.15.17.11 NMAC
- ☐ Operating and Maintenance Plan - based upon the appropriate requirements of 19.15.17.12 NMAC
- ☐ Closure Plan (Please complete Boxes 14 through 18, if applicable) - based upon the appropriate requirements of Subsection C of 19.15.17.9 NMAC and 19.15.17.13 NMAC

☐ Previously Approved Design (attach copy of design)      API \_\_\_\_\_

☐ Previously Approved Operating and Maintenance Plan      API \_\_\_\_\_

13

**Permanent Pits Permit Application Checklist:** Subsection B of 19.15.17.9 NMAC

*Instructions: Each of the following items must be attached to the application. Please indicate, by a check mark in the box, that the documents are attached.*

- ☐ Hydrogeologic Report - based upon the requirements of Paragraph (1) of Subsection B of 19.15.17.9 NMAC
- ☐ Siting Criteria Compliance Demonstrations - based upon the appropriate requirements of 19.15.17.10 NMAC
- ☐ Climatological Factors Assessment
- ☐ Certified Engineering Design Plans - based upon the appropriate requirements of 19.15.17.11 NMAC
- ☐ Dike Protection and Structural Integrity Design: based upon the appropriate requirements of 19.15.17.11 NMAC
- ☐ Leak Detection Design - based upon the appropriate requirements of 19.15.17.11 NMAC
- ☐ Liner Specifications and Compatibility Assessment - based upon the appropriate requirements of 19.15.17.11 NMAC
- ☐ Quality Control/Quality Assurance Construction and Installation Plan
- ☐ Operating and Maintenance Plan - based upon the appropriate requirements of 19.15.17.12 NMAC
- ☐ Freeboard and Overtopping Prevention Plan - based upon the appropriate requirements of 19.15.17.11 NMAC
- ☐ Nuisance or Hazardous Odors, including H<sub>2</sub>S, Prevention Plan
- ☐ Emergency Response Plan
- ☐ Oil Field Waste Stream Characterization
- ☐ Monitoring and Inspection Plan
- ☐ Erosion Control Plan
- ☐ Closure Plan - based upon the appropriate requirements of Subsection C of 19.15.17.9 NMAC and 19.15.17.13 NMAC

14

**Proposed Closure:** 19.15.17.13 NMAC

*Instructions: Please complete the applicable boxes, Boxes 14 through 18, in regards to the proposed closure plan.*

Type: ☒ Drilling ☐ Workover ☐ Emergency ☒ Cavitation ☐ P&A ☐ Permanent Pit ☐ Below-grade Tank ☐ Closed-loop System  
☐ Alternative

Proposed Closure Method: ☐ Waste Excavation and Removal  
☐ Waste Removal (Closed-loop systems only)  
☒ On-site Closure Method (only for temporary pits and closed-loop systems)  
☒ In-place Burial ☐ On-site Trench  
☐ Alternative Closure Method (Exceptions must be submitted to the Santa Fe Environmental Bureau for consideration)

15

**Waste Excavation and Removal Closure Plan Checklist** (19.15.17.13 NMAC) *Instructions: Each of the following items must be attached to the closure plan. Please indicate, by a check mark in the box, that the documents are attached.*

- ☐ Protocols and Procedures - based upon the appropriate requirements of 19.15.17.13 NMAC
- ☐ Confirmation Sampling Plan (if applicable) - based upon the appropriate requirements of Subsection F of 19.15.17.13 NMAC
- ☐ Disposal Facility Name and Permit Number (for liquids, drilling fluids and drill cuttings)
- ☐ Soil Backfill and Cover Design Specifications - based upon the appropriate requirements of Subsection H of 19.15.17.13 NMAC
- ☐ Re-vegetation Plan - based upon the appropriate requirements of Subsection I of 19.15.17.13 NMAC
- ☐ Site Reclamation Plan - based upon the appropriate requirements of Subsection G of 19.15.17.13 NMAC

**Waste Removal Closure For Closed-loop Systems That Utilize Above Ground Steel Tanks or Haul-off Bins Only:**(19.15.17.13 D NMAC)

*Instructions: Please identify the facility or facilities for the disposal of liquids, drilling fluids and drill cuttings. Use attachment if more than two facilities are required.*

Disposal Facility Name: \_\_\_\_\_ Disposal Facility Permit #: \_\_\_\_\_

Disposal Facility Name: \_\_\_\_\_ Disposal Facility Permit #: \_\_\_\_\_

Will any of the proposed closed-loop system operations and associated activities occur on or in areas that will *not* be used for future service and

☐ Yes (If yes, please provide the information) ☐ No

*Required for impacted areas which will not be used for future service and operations*

☐ Soil Backfill and Cover Design Specification - based upon the appropriate requirements of Subsection H of 19.15.17.13 NMAC

☐ Re-vegetation Plan - based upon the appropriate requirements of Subsection I of 19.15.17.13 NMAC

☐ Site Reclamation Plan - based upon the appropriate requirements of Subsection G of 19.15.17.13 NMAC

**Siting Criteria (Regarding on-site closure methods only):** 19.15.17.10 NMAC

*Instructions: Each siting criteria requires a demonstration of compliance in the closure plan. Recommendations of acceptable source material are provided below. Requests regarding changes to certain siting criteria may require administrative approval from the appropriate district office or may be considered an exception which must be submitted to the Santa Fe Environmental Bureau office for consideration of approval. Justifications and/or demonstrations of equivalency are required. Please refer to 19.15.17.10 NMAC for guidance.*

Ground water is less than 50 feet below the bottom of the buried waste.

- NM Office of the State Engineer - iWATERS database search; USGS. Data obtained from nearby wells

☐ Yes ☒ No

☐ N/A

Ground water is between 50 and 100 feet below the bottom of the buried waste

- NM Office of the State Engineer - iWATERS database search; USGS; Data obtained from nearby wells

☒ Yes ☐ No

☐ N/A

Ground water is more than 100 feet below the bottom of the buried waste.

- NM Office of the State Engineer - iWATERS database search; USGS; Data obtained from nearby wells

☐ Yes ☒ No

☐ N/A

Within 300 feet of a continuously flowing watercourse, or 200 feet of any other significant watercourse or lakebed, sinkhole, or playa lake (measured from the ordinary high-water mark).

- Topographic map; Visual inspection (certification) of the proposed site

☐ Yes ☒ No

Within 300 feet from a permanent residence, school, hospital, institution, or church in existence at the time of initial application.

- Visual inspection (certification) of the proposed site; Aerial photo; satellite image

☐ Yes ☒ No

☐ Yes ☒ No

Within 500 horizontal feet of a private, domestic fresh water well or spring that less than five households use for domestic or stock watering purposes, or within 1000 horizontal feet of any other fresh water well or spring, in existence at the time of the initial application.

- NM Office of the State Engineer - iWATERS database; Visual inspection (certification) of the proposed site

☐ Yes ☒ No

Within incorporated municipal boundaries or within a defined municipal fresh water well field covered under a municipal ordinance adopted pursuant to NMSA 1978, Section 3-27-3, as amended.

- Written confirmation or verification from the municipality; Written approval obtained from the municipality

☐ Yes ☒ No

Within 500 feet of a wetland

- US Fish and Wildlife Wetland Identification map; Topographic map; Visual inspection (certification) of the proposed site

☐ Yes ☒ No

Within the area overlying a subsurface mine.

- Written confirmation or verification or map from the NM EMNRD-Mining and Mineral Division

☐ Yes ☒ No

Within an unstable area.

- Engineering measures incorporated into the design. NM Bureau of Geology & Mineral Resources; USGS; NM Geological Society; Topographic map

☐ Yes ☒ No

Within a 100-year floodplain.

- FEMA map

**On-Site Closure Plan Checklist:** (19.15.17.13 NMAC) *Instructions: Each of the following items must be attached to the closure plan. Please indicate, by a check mark in the box, that the documents are attached.*

☒ Siting Criteria Compliance Demonstrations - based upon the appropriate requirements of 19.15.17.10 NMAC

☒ Proof of Surface Owner Notice - based upon the appropriate requirements of Subsection F of 19.15.17.13 NMAC

☐ Construction/Design Plan of Burial Trench (if applicable) based upon the appropriate requirements of 19.15.17.11 NMAC

☐ Construction/Design Plan of Temporary Pit (for in place burial of a drying pad) - based upon the appropriate requirements of 19.15.17.11 NMAC

☒ Protocols and Procedures - based upon the appropriate requirements of 19.15.17.13 NMAC

☐ Confirmation Sampling Plan (if applicable) - based upon the appropriate requirements of Subsection F of 19.15.17.13 NMAC

☒ Waste Material Sampling Plan - based upon the appropriate requirements of Subsection F of 19.15.17.13 NMAC

☒ Disposal Facility Name and Permit Number (for liquids, drilling fluids and drill cuttings or in case on-site closure standards cannot be achieved)

☒ Soil Cover Design - based upon the appropriate requirements of Subsection H of 19.15.17.13 NMAC

☒ Re-vegetation Plan - based upon the appropriate requirements of Subsection I of 19.15.17.13 NMAC

☒ Site Reclamation Plan - based upon the appropriate requirements of Subsection G of 19.15.17.13 NMAC

19

**Operator Application Certification:**

I hereby certify that the information submitted with this application is true, accurate and complete to the best of my knowledge and belief.

Name (Print): Mane E. Jaramillo Title: Staff Regulatory Technician  
 Signature: [Signature] Date: 9/30/09  
 e-mail address: mane.e.jaramillo@conocophillips.com Telephone: 503-326-9865

20

**OCD Approval:** ☒ Permit Application (including closure plan) ☐ Closure Plan (only) ☐ OCD Conditions (see attachment)

**OCD Representative Signature:** [Signature] **Approval Date:** 9/30/09

**Title:** EnviroSpa **OCD Permit Number:** \_\_\_\_\_

21

**Closure Report (required within 60 days of closure completion):** Subsection K of 19 15 17 13 NMAC

*Instructions: Operators are required to obtain an approved closure plan prior to implementing any closure activities and submitting the closure report. The closure report is required to be submitted to the division within 60 days of the completion of the closure activities. Please do not complete this section of the form until an approved closure plan has been obtained and the closure activities have been completed*

☐ **Closure Completion Date:** \_\_\_\_\_

22

**Closure Method:**

- ☐ Waste Excavation and Removal ☐ On-site Closure Method ☐ Alternative Closure Method ☐ Waste Removal (Closed-loop systems only)  
☐ If different from approved plan, please explain.

23

**Closure Report Regarding Waste Removal Closure For Closed-loop Systems That Utilize Above Ground Steel Tanks or Haul-off Bins Only:**

*Instructions: Please identify the facility or facilities for where the liquids, drilling fluids and drill cuttings were disposed. Use attachment if more than two facilities were utilized.*

Disposal Facility Name: \_\_\_\_\_ Disposal Facility Permit Number: \_\_\_\_\_

Disposal Facility Name: \_\_\_\_\_ Disposal Facility Permit Number: \_\_\_\_\_

Were the closed-loop system operations and associated activities performed on or in areas that *will not* be used for future service and operations?

- ☐ Yes (If yes, please demonstrate compliance to the items below) ☐ No

*Required for impacted areas which will not be used for future service and operations:*

- ☐ Site Reclamation (Photo Documentation)  
☐ Soil Backfilling and Cover Installation  
☐ Re-vegetation Application Rates and Seeding Technique

24

**Closure Report Attachment Checklist:** *Instructions: Each of the following items must be attached to the closure report. Please indicate, by a check mark in the box, that the documents are attached.*

- ☐ Proof of Closure Notice (surface owner and division)  
☐ Proof of Deed Notice (required for on-site closure)  
☐ Plot Plan (for on-site closures and temporary pits)  
☐ Confirmation Sampling Analytical Results (if applicable)  
☐ Waste Material Sampling Analytical Results (if applicable)  
☐ Disposal Facility Name and Permit Number  
☐ Soil Backfilling and Cover Installation  
☐ Re-vegetation Application Rates and Seeding Technique  
☐ Site Reclamation (Photo Documentation)

On-site Closure Location: Latitude: \_\_\_\_\_ Longitude: \_\_\_\_\_ NAD ☐ 1927 ☐ 1983

25

**Operator Closure Certification:**

*I hereby certify that the information and attachments submitted with this closure report is true, accurate and complete to the best of my knowledge and belief. I also certify that the closure complies with all applicable closure requirements and conditions specified in the approved closure plan*

Name (Print): \_\_\_\_\_ Title: \_\_\_\_\_

Signature: \_\_\_\_\_ Date: \_\_\_\_\_

e-mail address: \_\_\_\_\_ Telephone: \_\_\_\_\_



# *New Mexico Office of the State Engineer*

## **Water Column/Average Depth to Water**

---

No records found.

**PLSS Search:**

**Section(s):** 1, 2, 3

**Township:** 30N

**Range:** 06W

---

The data is furnished by the NMOSE/ISC and is accepted by the recipient with the expressed understanding that the OSE/ISC make no warranties, expressed or implied, concerning the accuracy, completeness, reliability, usability, or suitability for any particular purpose of the data

---

9/4/09 3:47 PM

Page 1 of 1

WATER COLUMN/ AVERAGE  
DEPTH TO WATER



# *New Mexico Office of the State Engineer* **Water Column/Average Depth to Water**

---

No records found.

**PLSS Search:**

**Section(s):** 34, 35, 36, 27,    **Township:** 31N    **Range:** 06W  
                  26, 25

---

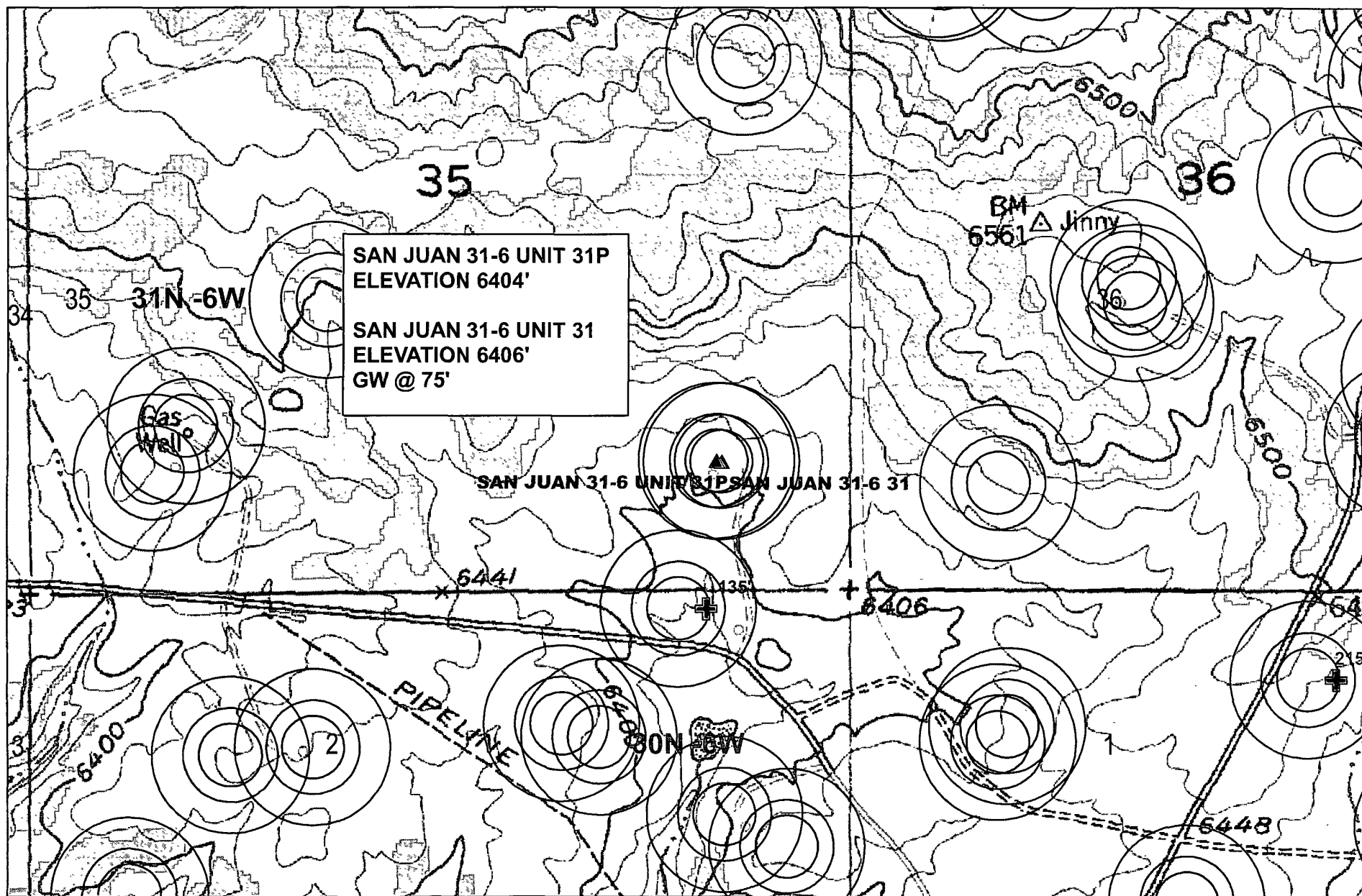
The data is furnished by the NMOSE/ISC and is accepted by the recipient with the expressed understanding that the OSE/ISC make no warranties, expressed or implied, concerning the accuracy, completeness, reliability, usability, or suitability for any particular purpose of the data.

---

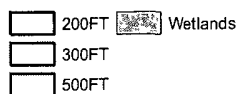
9/4/09 3:50 PM

Page 1 of 1

WATER COLUMN/ AVERAGE  
DEPTH TO WATER



Data Source  
Aerial flown locally Sedgewick in 2005.  
Wetlands Data Aquired from U.S. Fish  
and Wildlife [Http://wetlandswms.er.usgs.gov](http://wetlandswms.er.usgs.gov)  
USGS Topo

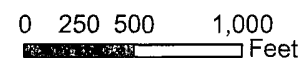


 iWaters  
 COP

**iWaters**

- ✗ SEC
- ✗ QTR-QTR
- ✗ QTR-QTR-QTR

1:10,000



NAD\_1983\_SP\_  
NM West\_FIPS\_  
3003

September 3, 2009



DATA SHEET FOR DEEP BED CATHODIC PROTECTION WELLS  
NORTHWESTERN NEW MEXICO  
(SUBMIT 2 COPIES TO OCD AZTEC OFFICE)

31-30-039-22110

PFCO DESIGNATION: FM-361  
OPERATOR: PHILLIPS PETROLEUM COMPANY  
FARMINGTON, N.M. 87401  
(505) 599-3400  
LOCATION: P 35 31 6  
LEASE NUMBER: 650263

NAME OF WELL/S OR PIPELINE SERVED: (1) SJ 31-6 UNIT #31 DK ✓  
(2) N A

ELEVATION: NA  
TOTAL DEPTH: 500 FT.  
COMPLETION DATE: 07/31/82  
LAND: FEDERAL

CASING INFO.: SIZE: NA IN. TYPE: NA  
DEPTH: NA FT. CEMENT USED: NA

IF CEMENT OR BENTONITE PLUGS HAVE BEEN PLACED, SHOW DEPTHS & AMOUNTS:  
PLUG DEPTH: NONE  
PLUG AMOUNT: NONE

WATER INFORMATION:  
WATER DEPTH (FT): (1) 75 ✓ (2) -0-  
WATER INFORMATION: NA

DEPTHS GAS ENCOUNTERED (FT): NA

TYPE AND AMOUNT OF COKE BREEZE USED:  
COKE TYPE: METALLURGICAL COKE BREEZE  
COKE AMOUNT: 6454 LBS.

DEPTHS ANODES PLACED (FT):  
225, 235, 290, 305, 330, 340, 350, 395, 445, 475

DEPTH VENT PIPE PLACED (FT): 500

VENT PIPE PERFORATIONS (FT): TOP 215 BOTTOM 500

REMARKS: -0-

IF ANY OF THE ABOVE DATA IS UNAVAILABLE, PLEASE INDICATE SO. COPIES OF ALL LOGS, INCLUDING DRILLERS LOG, WATER ANALYSIS & WELL BORE SCHEMATICS SHOULD BE SUBMITTED WHEN AVAILABLE. UNPLUGGED ABANDONED WELLS ARE TO BE INCLUDED.

\* - LAND TYPE MAY BE SHOWN: F-FEDERAL; I-INDIAN; S-STATE; P-FEE  
IF FEDERAL OR INDIAN, ADD LEASE NUMBER.

NA-INFORMATION NOT AVAILABLE

CC: CP FILE--FARMINGTON  
HOUSTON

RECEIVED  
FEB 21 1992  
OIL CON. DIV.  
DIST. 3

UNITED STATES  
DEPARTMENT OF THE INTERIOR  
BUREAU OF LAND MANAGEMENT

FORM APPROVED  
OMB No. 1004-0137  
Expires: November 30, 2000

**WELL COMPLETION OR RECOMPLETION REPORT AND LOG**

5. Lease Serial No.  
NMSF078999

1a. Type of Well ☐ Oil Well ☒ Gas Well ☐ Dry ☐ Other  
b. Type of Completion ☐ New Well ☐ Work Over ☐ Deepen ☐ Plug Back ☐ Diff. Resvr.  
Other \_\_\_\_\_

6. If Indian, Allottee or Tribe Name

7. Unit or CA Agreement Name and No.  
NMNM78421A

2. Name of Operator  
PHILLIPS PETROLEUM COMPANY Contact: PATSY CLUGSTON  
E-Mail: pclugs@ppco.com

8. Lease Name and Well No.  
SJ 31 6 31 ✓

3. Address 5525 HIGHWAY 64 NBU 3004  
FARMINGTON, NM 87401 3a. Phone No. (include area code)  
Ph: 505.599.3454

9. API Well No.  
30-039-22110-00-C2

4. Location of Well (Report location clearly and in accordance with Federal requirements)\*  
Sec 35 T31N R6W Mer NMP  
At surface SESE 0820FSL 0820FEL 36.85117 N Lat, 107.42535 W Lon

10. Field and Pool, or Exploratory  
BLANCO MV / BASIN DAKOTA

11. Sec., T., R., M., or Block and Survey  
or Area Sec 35 T31N R6W Mer NMP

12. County or Parish  
RIO ARRIBA 13. State  
NM

At top prod interval reported below  
At total depth

14. Date Spudded  
11/22/1979 15. Date T.D. Reached  
12/08/1979 16. Date Completed  
☐ D & A ☒ Ready to Prod.  
11/26/2002

17. Elevations (DF, KB, RT, GL)\*  
6406 GL ✓

18. Total Depth: MD 7928 TVD 7928 19. Plug Back T.D.: MD 7903 TVD 7903 20. Depth Bridge Plug Set: MD TVD

21. Type Electric & Other Mechanical Logs Run (Submit copy of each)  
CBL GR

22. Was well cored? ☒ No ☐ Yes (Submit analysis)  
Was DST run? ☒ No ☐ Yes (Submit analysis)  
Directional Survey? ☒ No ☐ Yes (Submit analysis)

**23. Casing and Liner Record (Report all strings set in well)**

Hole Size	Size/Grade	Wt. (#/ft.)	Top (MD)	Bottom (MD)	Stage Cementer Depth	No. of Sk. & Type of Cement	Slurry Vol. (BBL)	Cement Top*	Amount Pulled
12.250	9.625	36.0	0	377		275		0	5
8.750	7.000	20.0	0	3788		160			
6.250	4.500	11.0	0	7928		345			

**24. Tubing Record**

Size	Depth Set (MD)	Packer Depth (MD)	Size	Depth Set (MD)	Packer Depth (MD)	Size	Depth Set (MD)	Packer Depth (MD)
2.375	7810							

**25. Producing Intervals**

**26. Perforation Record**

Formation	Top	Bottom	Perforated Interval	Size	No. Holes	Perf. Status
A) MESAVERDE	5128	5928	5128 TO 5928	0.340	24	OPEN
B)						
C)						
D)						

**27. Acid, Fracture, Treatment, Cement Squeeze, Etc.**

Depth Interval	Amount and Type of Material
5128 TO 5928	36 BBLS 15% HCL
5128 TO 5928	585.000 GAL 60 QUALITY N2 SFG - 3000 W/21,500# 20/

**28. Production - Interval A**

Date First Produced	Test Date	Hours Tested	Test Production	Oil BBL	Gas MCF	Water BBL	Oil Gravity Corr API	Gas Gravity	Production Method
11/27/2002	11/23/2002	24	→	0.0	1452.0	5 0			FLows FROM WELL
Choke Size	Tbg Press Flwg SI	Csg Press	24 Hr Rate	Oil BBL	Gas MCF	Water BBL	Gas Oil Ratio	Well Status	
5	SI	220.0	→		1452	5		PGW	

**28a. Production - Interval B**

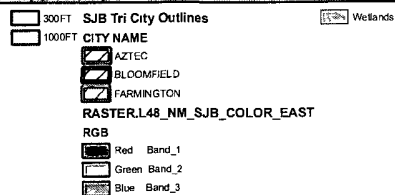
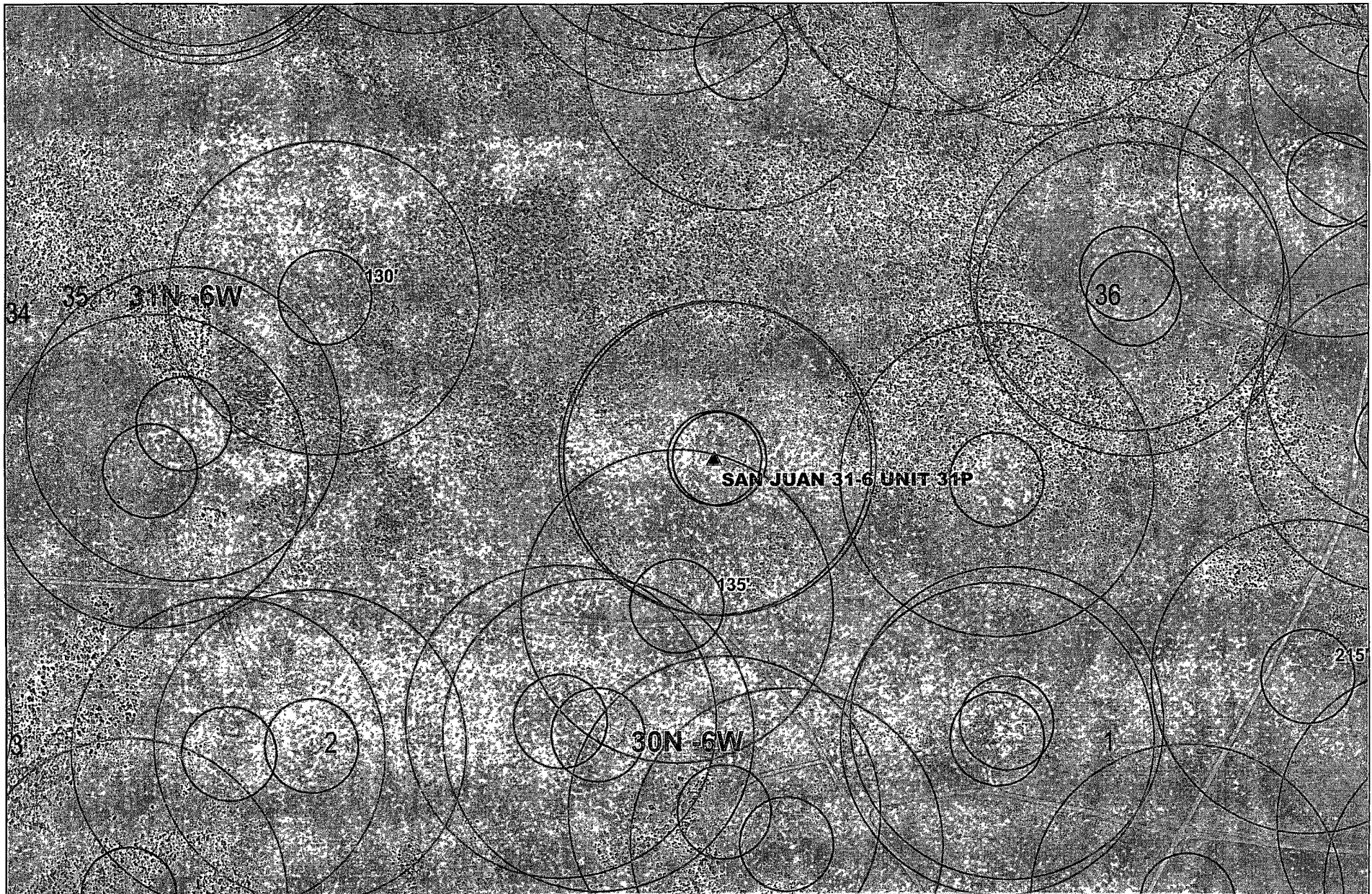
Date First Produced	Test Date	Hours Tested	Test Production	Oil BBL	Gas MCF	Water BBL	Oil Gravity Corr API	Gas Gravity	Production Method
			→						
Choke Size	Tbg Press Flwg SI	Csg Press	24 Hr Rate	Oil BBL	Gas MCF	Water BBL	Gas Oil Ratio	Well Status	
	SI		→						

(See Instructions and spaces for additional data on reverse side)

ELECTRONIC SUBMISSION #16554 VERIFIED BY THE BLM WELL INFORMATION SYSTEM

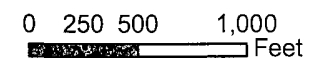
**\*\* REVISED \*\* REVISED \*\* REVISED \*\* REVISED \*\* REVISED \*\* REVISED \*\* REVISED \*\***

NMOCD



Data Source  
Aerial flown locally Sedgewick in 2005.  
Wetlands Data Aquired from U.S. Fish  
and Wildlife [Http://wetlandswms.er.usgs.gov](http://wetlandswms.er.usgs.gov)  
USGS Topo

1:10,000



NAD\_1983\_SP\_  
NM West\_FIPS\_  
3003  
September 3, 2009

# SAN JUAN 31-6 UNIT 31P MINES MILLS & QUARRIES

## Mines, Mills & Quarries Commodity Groups

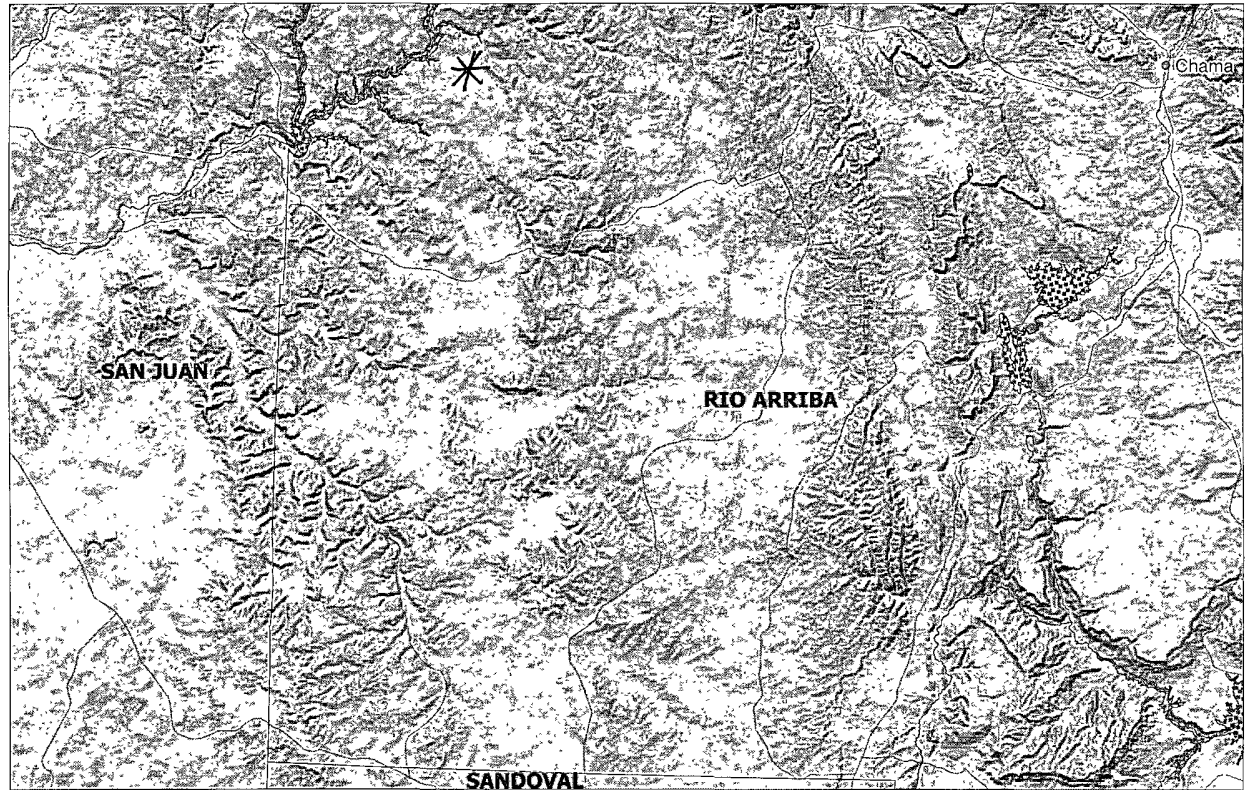
- △ Aggregate & Stone Mines
- ◆ Coal Mines
- ☆ Industrial Minerals Mines
- ▽ Industrial Minerals Mills
- ▣ Metal Mines and Mill Concentrate
- Potash Mines & Refineries
- ⌘ Smelters & Refinery Ops.
- ✱ Uranium Mines
- ⊕ Uranium Mills

## Population

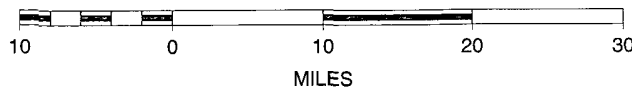
- ⊙ Cities - major

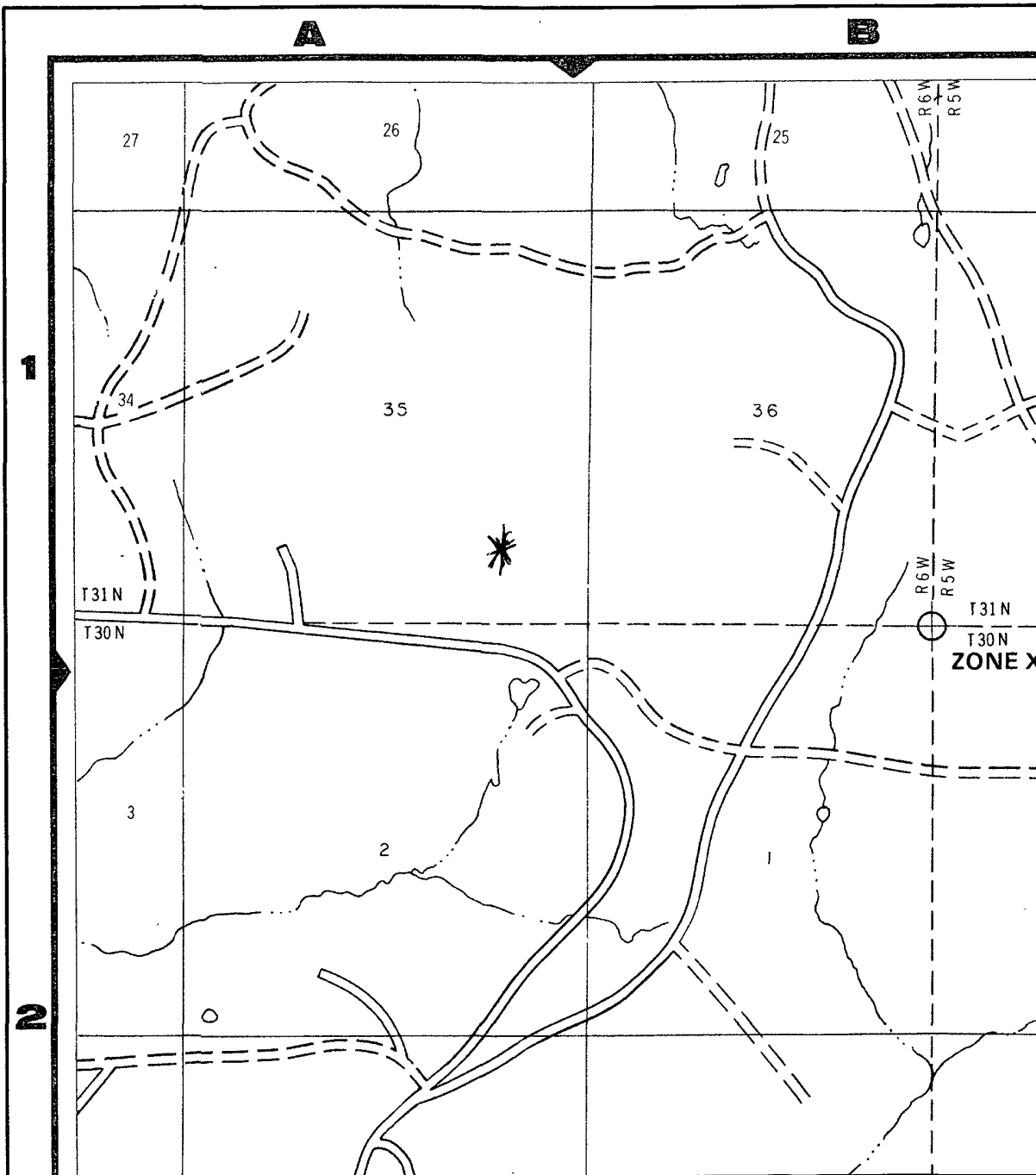
## Transportation

- ⊢⊢⊢ Railways
- Interstate Highways
- Major Roads



SCALE 1 : 781,745





APPROXIMATE SCALE

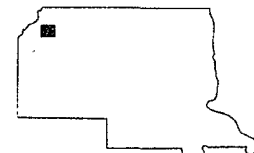
2000 0 2000 FEET

NATIONAL FLOOD INSURANCE PROGRAM

**FIRM**  
FLOOD INSURANCE RATE MAP

RIO ARriba COUNTY,  
NEW MEXICO  
UNINCORPORATED AREAS

PANEL 225 OF 1325  
(SEE MAP INDEX FOR PANELS NOT PRINTED)



PANEL LOCATION

COMMUNITY-PANEL NUMBER  
350049 0225 B

EFFECTIVE DATE:  
JANUARY 5, 1989



Federal Emergency Management Agency

This is an official copy of a portion of the above referenced flood map. It was extracted using F-MIT On-Line. This map does not reflect changes or amendments which may have been made subsequent to the date on the title block. For the latest product information about National Flood Insurance Program flood maps check the FEMA Flood Map Store at [www.msc.fema.gov](http://www.msc.fema.gov)

### **Siting Criteria Compliance Demonstration & Hydro Geologic Analysis**

The San Juan 31-6 Unit 31P is not located in an unstable area. The location is not over a mine and is not on the side of a hill as indicated on the Mines, Mills and Quarries Map and Topographic Map. The location of the excavated pit material will not be located within 300' of any continuously flowing watercourse or 200' from any other watercourse as indicated on the Topographic Map. The location is not within a 100-year floodplain area as indicated on the FEMA Map. The Cathodic well data from the San Juan 31-6 Unit 31 has an elevation of 6406' and groundwater depth of 75'. The subject well has an elevation of 6404' which is 2' less than the San Juan 31-6 Unit 31, therefore the groundwater depth is greater than 73'. There are no iWATERS data points located in the area as indicated on the TOPO Map. The hydro geologic analysis indicates the groundwater depth and the San Jose formation will create a stable area for this new location.



## ***Hydrogeological report for San Juan 31-6 Unit 31P***

### **Regional Hydrogeological context:**

The San Jose Formation of Eocene age occurs in New Mexico and Colorado, and its outcrop forms the land surface over much of the eastern half of the central basin. It overlies the Nacimiento Formation in the area generally south of the Colorado-New Mexico State line and overlies the Animas Formation in the area generally north of the State line.

The San Jose Formation was deposited in various fluvial-type environments. In general, the unit consists of an interbedded sequence of sandstone, siltstone, and variegated shale. Thickness of the San Jose Formation generally increases from west to east (200 feet in the west and south to almost 2,700 feet in the center of the structural basin).

Ground water is associated with alluvial and fluvial sandstone aquifers. Thus, the occurrence of ground water is mainly controlled by the distribution of sandstone in the formation. The distribution of such sandstone is the result of original depositional extent plus any post-depositional modifications, namely erosion and structural deformation. Transmissivity data for San Jose Formation are minimal. Values of 40 and 120 feet squared per day were determined from two aquifer tests (Stone et al, 1983, table 5). The reported or measured discharge from 46 water wells completed in San Jose Formation ranges from 0.15 to 61 gallons per minute and the median is 5 gallons per minute. Most of the wells provide water for livestock and domestic use.

The San Jose Formation is a very suitable unit for recharge from precipitation because soils that form on the unit are sandy and highly permeable and therefore readily adsorb precipitation. However, low annual precipitation, relatively high transpiration and evaporation rates, and deep dissection of the San Jose Formation by the San Juan River and its tributaries all tend to reduce the effective recharge to the unit.

Stone et al., 1983, Hydrogeology and Water Resources of the San Juan Basin, New Mexico: Socorro, New Mexico Bureau of Mines and Mineral Resources Hydrologic Report 6, 70 p.

## **Jaramillo, Marie E**

---

**From:** Jaramillo, Marie E  
**Sent:** Tuesday, September 08, 2009 2:22 PM  
**To:** 'mark\_kelly@nm.blm.gov'  
**Subject:** OCD PIT CLOSURE NOTIFICATION 090809

**Importance:** High

*Mark*

*The temporary pit at the Well Name will be closed on-site. The new OCD Pit Rule 17 requires the surface owner be notified. Please let me know if you have any questions.*

***SAN JUAN 31-6 UNIT 39M***

***SAN JUAN 31-6 UNIT 31P ✓***

***MCMANUS 13R***

***SAN JUAN 31-6 UNIT 6F***

***SAN JUAN 28-5 UNIT 91P***

*Marie Jaramillo*

*Staff Regulatory Tech.*

*ConocoPhillips*

*Office # (505) 326-9865*

*Fax # (505) 599-4062*

*<mailto:marie.e.jaramillo@conocophillips.com>*



District I  
1625 N. French Dr., Hobbs, NM 88240

District II  
1301 W. Grand Avenue, Artesia, NM 88210

District III  
1000 Rio Brazos Rd., Aztec, NM 87410

District IV  
1220 S. St. Francis Dr., Santa Fe, NM 87505

State of New Mexico  
Energy, Minerals & Natural Resources Department

OIL CONSERVATION DIVISION  
1220 South St. Francis Dr.  
Santa Fe, NM 87505

Form C-102  
Revised October 12, 2005  
Instructions on back  
Submit to Appropriate District Office  
State Lease - 4 Copies  
Fee Lease - 3 Copies

☐ AMENDED REPORT

### WELL LOCATION AND ACREAGE DEDICATION PLAT

*API Number		*Pool Code	*Pool Name
		72319 / 71599	BLANCO MESAVERDE / BASIN DAKOTA
*Property Code	*Property Name		*Well Number
31328	SAN JUAN 31-6 UNIT		31P
*GRID No	*Operator Name		*Elevation
217817	CONOCOPHILLIPS COMPANY		6404'

#### <sup>10</sup> Surface Location

UL or lot no	Section	Township	Range	Lot Idn	Feet from the	North/South line	Feet from the	East/West line	County
P	35	31N	6W		855	SOUTH	845	EAST	RIO ARriba

#### <sup>11</sup> Bottom Hole Location If Different From Surface

UL or lot no.	Section	Township	Range	Lot Idn	Feet from the	North/South line	Feet from the	East/West line	County
J	35	31N	6W		1600	SOUTH	1980	EAST	RIO ARriba

<sup>12</sup> Dedicated Acres	320.0 Acres - E/2 (MV)	<sup>13</sup> Joint or Infill	<sup>14</sup> Consolidation Code	<sup>15</sup> Order No.
	320.0 Acres - S/2 (DK)			

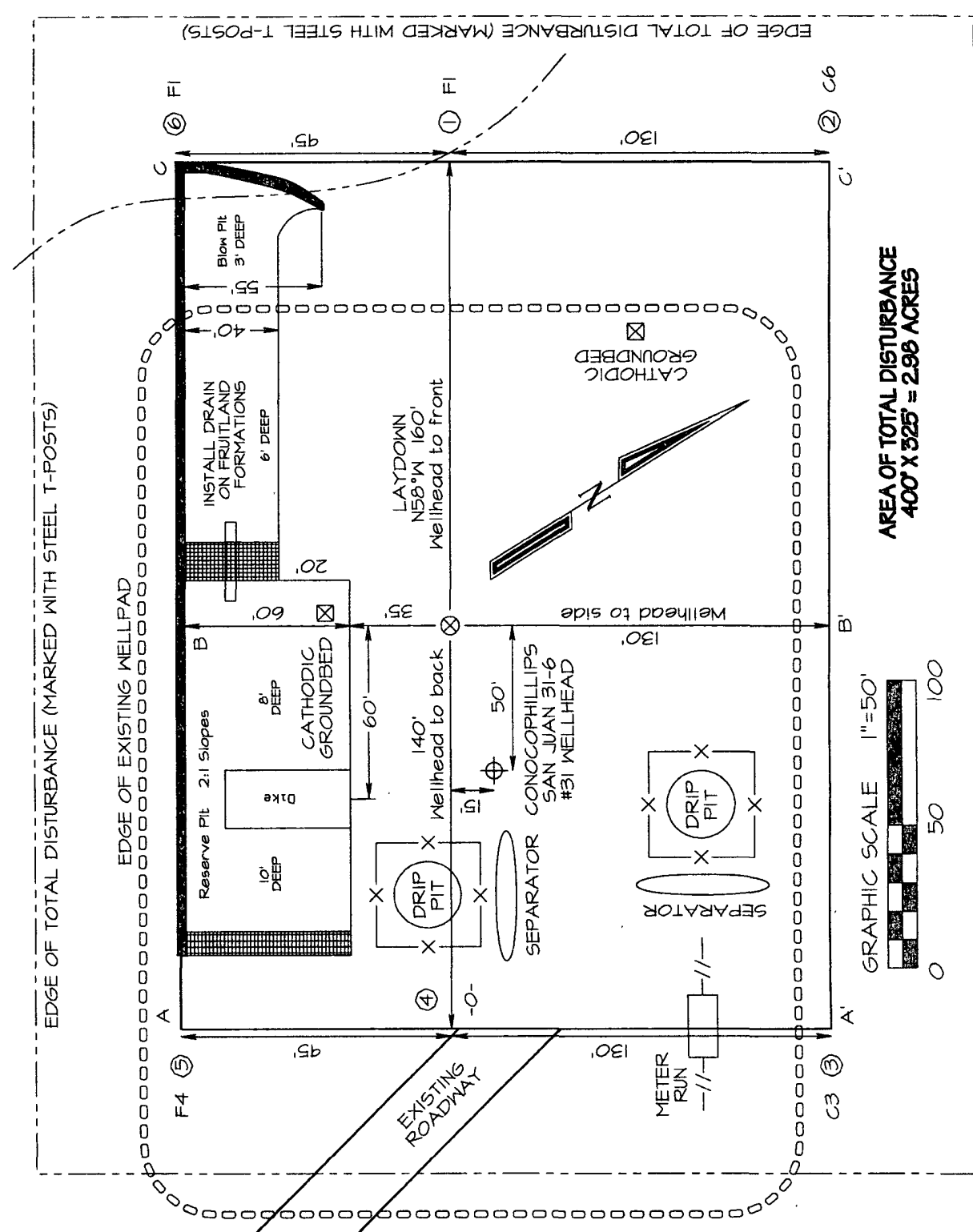
NO ALLOWABLE WILL BE ASSIGNED TO THIS COMPLETION UNTIL ALL INTERESTS HAVE BEEN CONSOLIDATED OR A NON-STANDARD UNIT HAS BEEN APPROVED BY THE DIVISION

<div><p>16</p><p>5276.04'</p><p>5280.00'</p><p>35</p><p>BOTTOM-HOLE LOCATION LAT: 36°51.1923'N LONG: 107°25.7606'W DATUM: NAD27</p><p>SURFACE LOCATION LAT: 36°51.0710'N LONG: 107°25.5276'W DATUM: NAD27</p><p>1600'</p><p>1980'</p><p>855'</p><p>845'</p><p>2640.00'</p><p>LEASE SF-078999</p><p>N57°18.8'W 1353.8'</p></div>	<div><p><sup>17</sup> OPERATOR CERTIFICATION</p><p>I hereby certify that the information contained herein is true and complete to the best of my knowledge and belief, and that this organization either owns a working interest or unleased mineral interest in the land including the proposed bottom-hole location or has a right to drill this well at this location pursuant to a contract with an owner of such a mineral or working interest, or to a voluntary pooling agreement or a compulsory pooling order heretofore entered by the division.</p><p>Signature _____ Date _____ Virgil E. Chavez</p><p>Printed Name _____</p></div> <div><p><sup>18</sup> SURVEYOR CERTIFICATION</p><p>I hereby certify that the well location shown on this plat was plotted from field notes of actual surveys made by me or under my supervision, and that the same is true and correct to the best of my belief.</p><p>Survey Date: DECEMBER 13, 2006</p><p>Signature and Seal of Professional Surveyor</p><div><p>JASON C. EDWARDS NEW MEXICO 15269 REGISTERED PROFESSIONAL SURVEYOR</p></div><p>JASON C. EDWARDS Certificate Number 15269</p></div>
---	---

**CONOCOPHILLIPS COMPANY SAN JUAN 31-6 UNIT #31P  
855' FSL & 845' FEL, SECTION 35, T31N, R6W, NMPM  
RIO ARriba COUNTY, NEW MEXICO ELEVATION: 6404'**

LATITUDE: 36°51.07'N  
LONGITUDE: 107°25.527'W  
DATUM: NAD1927

~ SURFACE OWNER ~  
Bureau of Land Management



GRAPHIC SCALE 1"=50'  
0 50 100  
AREA OF TOTAL DISTURBANCE  
400' X 325' = 2.98 ACRES

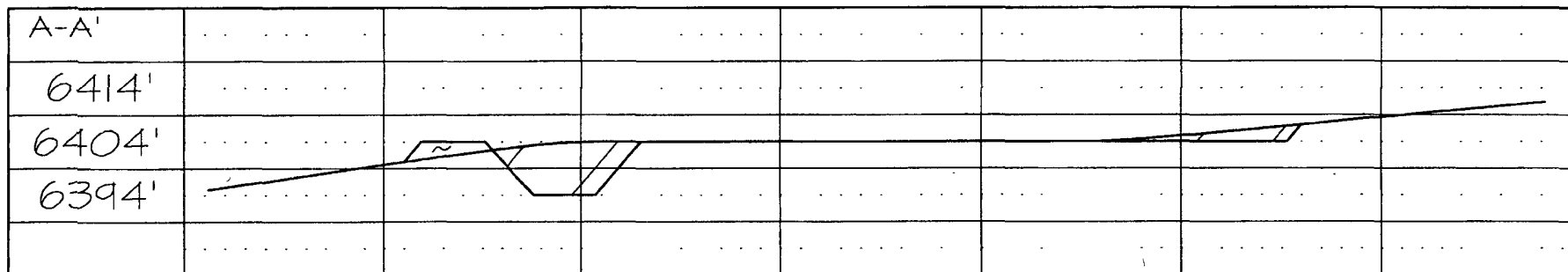
NCE SURVEYS IS NOT LIABLE FOR LOCATION OF UNDERGROUND UTILITIES OR PIPELINES.  
CONTRACTOR SHOULD CONTACT ONE-CALL FOR LOCATION OF ANY MARKED OR UNMARKED UNDERGROUND UTILITIES OR PIPELINES ON WELLPAD AND/OR ACCESS ROAD AT LEAST TWO WORKING DAYS PRIOR TO CONSTRUCTION.

CONOCOPHILLIPS COMPANY SAN JUAN 31-6 UNIT #31P  
 855' FSL & 845' FEL, SECTION 35, T31N, R6W, NMPM  
 RIO ARriba COUNTY, NEW MEXICO ELEVATION: 6404'

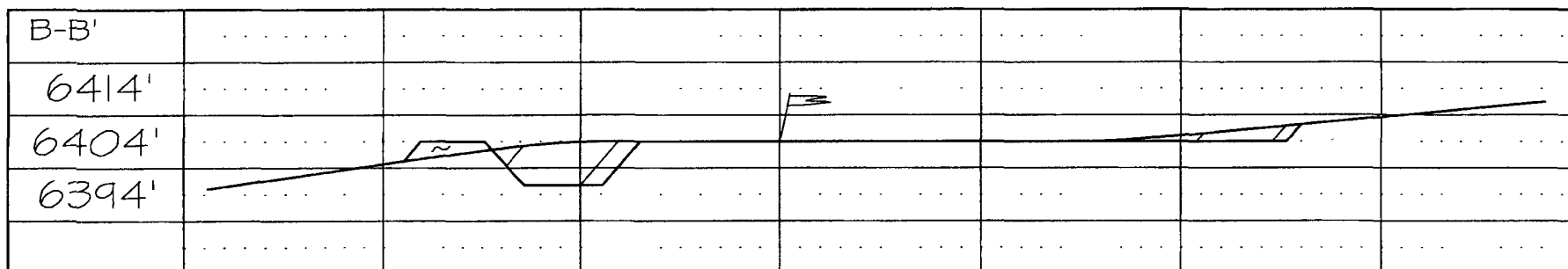
HORIZONTAL SCALE 1"=40'

C/L

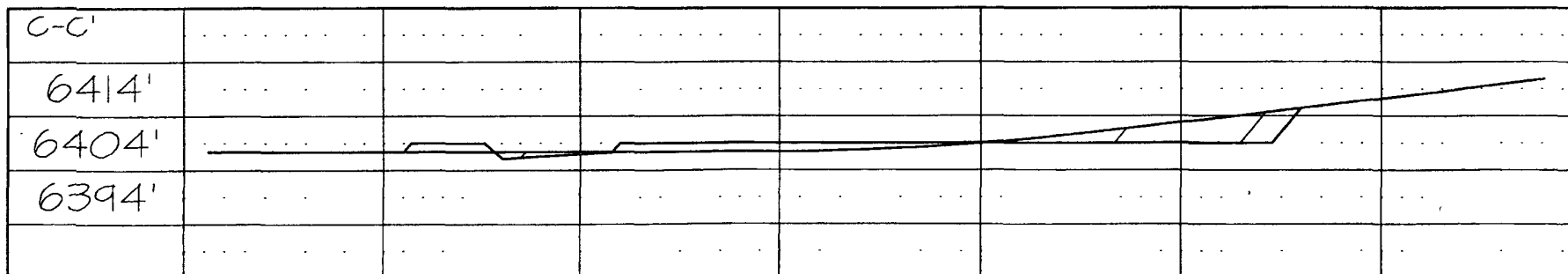
VERTICAL SCALE 1"=30'



C/L



C/L



NCE SURVEYS IS NOT LIABLE FOR LOCATION OF UNDERGROUND UTILITIES OR PIPELINES.

CONTRACTOR SHOULD CONTACT ONE-CALL FOR LOCATION OF ANY MARKED OR UNMARKED UNDERGROUND UTILITIES OR PIPELINES ON WELLPAD AND/OR ACCESS ROAD AT LEAST TWO WORKING DAYS PRIOR TO CONSTRUCTION.

# ConocoPhillips Company

## San Juan Basin

### Closure Plan

In accordance with Rule 19.15.17.12 NMAC the following information describes the closure requirements of temporary pits on ConocoPhillips Company (COPC) locations. This is COPC's standard procedure for all temporary pits. A separate plan will be submitted for any temporary pit which does not conform to this plan.

All closure activities will include proper documentation and be available for review upon request and will be submitted to OCD within 60 days of closure of pit closure. Closure report will be filed on C-144 and incorporate the following:

- Details on Capping and Covering, where applicable.
- Plot Plan (Pit Diagram)
- Inspection Reports
- Sampling Results
- C-105
- Copy of Deed Notice will be filed with County Clerk

#### General Plan:

1. All free standing liquids will be removed at the start of the pit closure process from the pit and disposed of in a division-approved facility or recycle, reuse or reclaim the liquids in a manner that the appropriate division district office approves. The facilities to be used will be Basin Disposal (Permit #NM-01-005) and Envirotech Land Farm (Permit #NM-01-011).
2. The preferred method of closure for all temporary pits will be on-site burial, assuming that all the criteria listed in sub-section (B) of 19.15.17.13 are met.
3. The surface owner shall be notified of COPC's closing of the temporary pit prior to closure as per the approved closure plan via certified mail, return receipt requested.
4. Within 6 months of the Rig Off status occurring COPC will ensure that temporary pits are closed, re-contoured, and reseeded.
5. Notice of Closure will be given prior to closure to the Aztec Division office between 72 hours and one week via email, or verbally. The notification of closure will include the following:
  - i. Operator's name
  - ii. Location by Unit Letter, Section, Township, and Range. Well name and API number.
6. Liner of temporary pit shall be removed above "mud level" after stabilization. Removal of liner will consist of manually or mechanically cutting liner at mud level and removing all remaining liner. Care will be taken to remove "All" of the liner i.e., edges of liner entrenched or buried. All excessive liner will be disposed of at the San Juan County Landfill located on CR 3100.
7. Pit contents shall be mixed with non-waste containing, earthen material in order to achieve the solidification process. The solidification process will be accomplished using a combination of natural drying and mechanically mixing. Pit contents will be mixed with non-waste, earthen material to a consistency that is deemed a safe and stable. The mixing ratio shall not exceed 3 parts clean soil to 1 part pit contents.
8. A five point composite sample will be taken of the pit using sampling tools and all samples tested per Subsection B of 19.15.17.13(B)(1)(b). In the event that the criteria are not met, all contents will be handled per Subparagraph (a) of Paragraph (1) of Subsection B of 19.15.17.13 i.e., Dig and haul.

Components	Tests Method	Limit (mg/Kg)
Benzene	EPA SW-846 8021B or 8260B	0.2
BTEX	EPA SW-846 8021B or 8260B	50
TPH	EPA SW-846 418.1	2500
GRO/DRO	EPA SW-846 8015M	500
Chlorides	EPA 300.1	1000/500

9. Upon completion of solidification and testing standards being passed, the pit area will be backfilled with compacted, non-waste containing, earthen material. A minimum of four feet of cover shall be achieved and the cover shall include one foot of suitable material to establish vegetation at the site, or the background thickness of topsoil, whichever is greater. If standard testing fails COPC will dig and haul all contents pursuant to 19.15.17.13.i.a. After doing such, confirmation sampling will be conducted to ensure a release has not occurred.
10. During the stabilization process if the liner is ripped by equipment the Aztec OCD office will be notified within 48 hours and the liner will be repaired if possible. If the liner can not be repaired then all contents will be excavated and removed.
11. Dig and Haul Material will be transported to the Envirotech Land Farm located 16 miles south of Bloomfield on Angel Peak Road, CR 7175. Permit # NM010011
12. Re-contouring of location will match fit, shape, line, form and texture of the surrounding. Re-shaping will include drainage control, prevent ponding, and prevent erosion. Natural drainages will be unimpeded and water bars and/or silt traps will be place in areas where needed to prevent erosion on a large scale. Final re-contour shall have a uniform appearance with smooth surface, fitting the natural landscape.
13. Notification will be sent to OCD when the reclaimed area is seeded.
14. COPC shall seed the disturbed areas the first growing season after the operator closes the pit. Seeding will be accomplished via drilling on the contour whenever practical or by other division-approved methods. BLM or Forest Service stipulated seed mixes will used on federal lands. Vegetative cover will equal 70% of the native perennial vegetative cover (un-impacted) consisting of at least three native plant species, including at least one grass, but not including noxious weeds, and maintain that cover through two successive growing seasons. Repeat seeding or planting will be continued until successful vegetative growth occurs.

Type	Variety or Cultivator	PLS/A
Western wheatgrass	Arriba	3.0
Indian ricegrass	Paloma or Rimrock	3.0
Slender wheatgrass	San Luis	2.0
Crested wheatgrass	Hy-crest	3.0
Bottlebrush Squirreltail	Unknown	2.0
Four-wing Saltbrush	Delar	.25

**Species shall be planted in pounds of pure live seed per acre:**

**Present Pure Live Seed (PLS) = Purity X Germination/100**

**Two lots of seed can be compared on the basis of PLS as follows:**

Source No. One (poor quality)

Purity 50 percent

Germination 40 percent

Percent PLS 20 percent

**5 lb. bulk seed required to make**

**1 lb. PLS**

Source No. two (better quality)

Purity 80 percent

Germination 63 percent

Percent PLS 50 percent

**2 lb. bulk seed required to make**

**1 lb. PLS**

15. The temporary pit will be located with a steel marker, no less than four inches in diameter, cemented in a hole three feet deep in the center of the onsite burial upon the abandonment of all the wells on the pad. The marker will be flush with the ground to allow access of the active well pad and for safety concerns. The marker will include a threaded collar to be used for future abandonment. The top of the marker will contain a welded steel 12" square plate that indicates the onsite burial of the temporary pit. The plate will be easily removable and a four foot tall riser will be threaded into the top of the collar marker and welded around the base with the operator's information at the time of all wells on the pad are abandoned. The operator's information will include the following: Operator Name, Lease Name, Well Name and number, Unit Number, Section, Township, Range and an indicator that the marker is an onsite burial location.