

District I  
1725 N. French Dr., Hobbs, NM 88240  
District II  
1301 W. Grand Avenue, Artesia, NM 88210  
District III  
1000 Rio Brazos Rd., Aztec, NM 87410  
District IV  
1220 S. St. Francis Dr., Santa Fe, NM 87505

State of New Mexico  
Energy, Minerals & Natural Resources Department  
**OIL CONSERVATION DIVISION**  
1220 South St. Francis Dr.  
Santa Fe, NM 87505

Form C-102  
Revised October 12, 2005  
Submit to Appropriate District Office  
State Lease - 7 Copies  
Fee Lease - 3 Copies

"AS DRILLED PLAT"

AMENDED REPORT

WELL LOCATION AND ACREAGE DEDICATION PLAT

<sup>1</sup> API Number 30-045-34644	<sup>2</sup> Pool Code 72319 / <del>72309</del>	<sup>3</sup> Pool Name BLANCO MESAVERDE/DAKOTA
<sup>4</sup> Property Code 34287	<sup>5</sup> Property Name NEGRO CANYON	
<sup>7</sup> OGRID No. 14538	<sup>8</sup> Operator Name BURLINGTON RESOURCES OIL AND GAS COMPANY LP	<sup>6</sup> Well Number 4
		<sup>9</sup> Elevation 8724

<sup>10</sup> SURFACE LOCATION

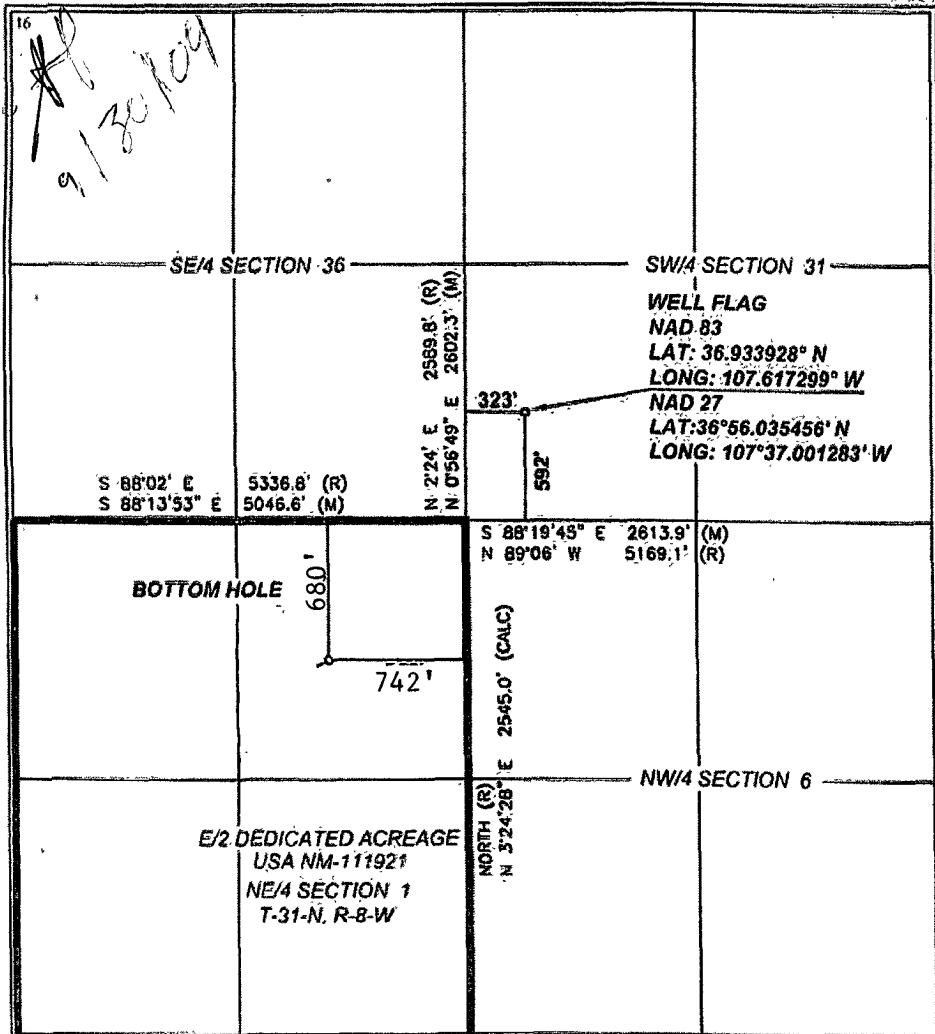
UL or lot no.	Section	Township	Range	Lot Idn	Feet from the	North/South line	Feet from the	East/West line	County
M	31	32-N	7-W		592	SOUTH	323	WEST	SAN JUAN

<sup>11</sup> Bottom Hole Location If Different From Surface

UL or lot no.	Section	Township	Range	Lot Idn	Feet from the	North/South line	Feet from the	East/West line	County
A	1	31-N	8-W		680	NORTH	742	EAST	SAN JUAN

<sup>12</sup> Dedicated Acres 297.65	<sup>13</sup> Joint or Infill (E/2)	<sup>14</sup> Consolidation Code Sec. 1	<sup>15</sup> Order No.
---	--	--	-------------------------

NO ALLOWABLE WILL BE ASSIGNED TO THIS COMPLETION UNTIL ALL INTERESTS HAVE BEEN CONSOLIDATED OR A NON-STANDARD UNIT HAS BEEN APPROVED BY THE DIVISION



<sup>17</sup> OPERATOR CERTIFICATION

I hereby certify that the information contained herein is true and complete to the best of my knowledge and belief, and that this organization either owns a working interest or unleased mineral interest in the land including the proposed bottom hole location or has a right to drill this well at this location pursuant to a contract with an owner of such a mineral or working interest, or to a voluntary pooling agreement or a compulsory pooling order heretofore entered by the division.

*Crystal Tafuya* 9/24/09  
Signature  
Crystal Tafuya  
Printed Name  
Regulatory Technician  
Title and E-mail Address  
September 24th, 2009  
Date

<sup>18</sup> SURVEYOR CERTIFICATION

I hereby certify that the well location shown on this plat was plotted from field notes of actual surveys made by me or under my supervision, and that the same is true and correct to the best of my belief.

Date of Survey: 8/15/07  
Signature and Seal of Professional Surveyor:

Certificate Number: NM-11393

RECEIVED  
 OIL CONSERVATION DIVISION  
 SEP 24 2009



# COP Deviation Report

## NEGRO CANYON #4

<b>Operator</b> BURLINGTON RESOURCES OIL & GAS COMPANY LP	<b>Legal WellName</b> NEGRO CANYON #4	<b>API / UWI</b> 3004534644	<b>County</b> SAN JUAN	<b>State/Province</b> NEW MEXICO
<b>Surface Legal Location</b> 031-032N-007W-M	<b>N/S Dist (ft)</b> 592.00	<b>N/S Ref</b> FSL	<b>E/W Dist (ft)</b> 323 00	<b>E/W Ref</b> FWL

Survey Data				
Date	MD (ftKB)	Incl (°)	Method	Survey Company
5/18/2009	424.00	1.21	MWD	Scientific Drilling
5/18/2009	486.00	1.35	MWD	Scientific Drilling
5/18/2009	548.00	1.42	MWD	Scientific Drilling
5/18/2009	610.00	1.52	MWD	Scientific Drilling
5/18/2009	671.00	1.38	MWD	Scientific Drilling
5/18/2009	734.00	0.93	MWD	Scientific Drilling
5/18/2009	800.00	0.98	MWD	Scientific Drilling
5/18/2009	864.00	1.67	MWD	Scientific Drilling
5/18/2009	928.00	2.37	MWD	Scientific Drilling
5/18/2009	990.00	3.37	MWD	Scientific Drilling
5/18/2009	1,054.00	4.66	MWD	Scientific Drilling
5/18/2009	1,117.00	5.96	MWD	Scientific Drilling
5/19/2009	1,180.00	7.34	MWD	Scientific Drilling
5/19/2009	1,243.00	8.75	MWD	Scientific Drilling
5/19/2009	1,306.00	10.21	MWD	Scientific Drilling
5/19/2009	1,369.00	11.93	MWD	Scientific Drilling
5/19/2009	1,433.00	13.52	MWD	Scientific Drilling
5/19/2009	1,496.00	14.95	MWD	Scientific Drilling
5/19/2009	1,559.00	16.37	MWD	Scientific Drilling
5/19/2009	1,622.00	17.73	MWD	Scientific Drilling
5/19/2009	1,686.00	19.38	MWD	Scientific Drilling
5/19/2009	1,749.00	21.08	MWD	Scientific Drilling
5/19/2009	1,812.00	22.68	MWD	Scientific Drilling
5/19/2009	1,843.00	23.39	MWD	Scientific Drilling
5/19/2009	1,874.00	24.28	MWD	Scientific Drilling
5/19/2009	1,906.00	24.94	MWD	Scientific Drilling
5/19/2009	1,969.00	27.48	MWD	Scientific Drilling
5/20/2009	2,032.00	29.08	MWD	Scientific Drilling
5/20/2009	2,095.00	30.83	MWD	Scientific Drilling
5/20/2009	2,158.00	32.37	MWD	Scientific Drilling
5/20/2009	2,221.00	33.17	MWD	Scientific Drilling
5/20/2009	2,285.00	33.31	MWD	Scientific Drilling
5/20/2009	2,348.00	33.09	MWD	Scientific Drilling
5/20/2009	2,411.00	32.63	MWD	Scientific Drilling
5/20/2009	2,474.00	31.75	MWD	Scientific Drilling

I, the undersigned, certify that I acting in my capacity as \_\_\_\_\_ for ConocoPhillips Company, am authorized by said Company to make this report; and that said report was prepared under my supervision and directions, and that the facts stated herein are true to the best of my knowledge and belief.

Subscribed and sworn to me this \_\_\_\_\_

Notary Public in and for San Juan County, New Mexico

My Commission expires \_\_\_\_\_

Survey Data					
Date	MD (ftKB)	Incl (*)	Method	Survey Company	
5/20/2009	2,537.00	32.66	MWD	Scientific Drilling	
5/20/2009	2,600.00	32.98	MWD	Scientific Drilling	
5/20/2009	2,663.00	33.08	MWD	Scientific Drilling	
5/20/2009	2,727.00	32.73	MWD	Scientific Drilling	
5/20/2009	2,790.00	32.68	MWD	Scientific Drilling	
5/20/2009	2,853.00	32.56	MWD	Scientific Drilling	
5/20/2009	2,917.00	32.33	MWD	Scientific Drilling	
5/20/2009	2,981.00	32.51	MWD	Scientific Drilling	
5/20/2009	3,044.00	32.15	MWD	Scientific Drilling	
5/20/2009	3,108.00	31.81	MWD	Scientific Drilling	
5/20/2009	3,172.00	32.48	MWD	Scientific Drilling	
5/20/2009	3,235.00	32.48	MWD	Scientific Drilling	
5/20/2009	3,299.00	31.77	MWD	Scientific Drilling	
5/20/2009	3,362.00	32.19	MWD	Scientific Drilling	
5/20/2009	3,426.00	31.50	MWD	Scientific Drilling	
5/20/2009	3,489.00	31.74	MWD	Scientific Drilling	
5/20/2009	3,553.00	30.69	MWD	Scientific Drilling	
5/20/2009	3,617.00	30.06	MWD	Scientific Drilling	
5/20/2009	3,681.00	30.49	MWD	Scientific Drilling	
5/21/2009	3,745.00	29.92	MWD	Scientific Drilling	
5/21/2009	3,808.00	29.26	MWD	Scientific Drilling	
5/21/2009	3,872.00	29.66	MWD	Scientific Drilling	
5/21/2009	3,936.00	29.71	MWD	Scientific Drilling	
5/21/2009	3,999.00	29.66	MWD	Scientific Drilling	
5/21/2009	4,063.00	29.85	MWD	Scientific Drilling	
5/21/2009	4,127.00	29.30	MWD	Scientific Drilling	
5/21/2009	4,191.00	28.25	MWD	Scientific Drilling	
5/21/2009	4,254.00	27.22	MWD	Scientific Drilling	
5/21/2009	4,317.00	24.78	MWD	Scientific Drilling	
5/21/2009	4,381.00	22.31	MWD	Scientific Drilling	
5/21/2009	4,445.00	20.43	MWD	Scientific Drilling	
5/21/2009	4,508.00	18.45	MWD	Scientific Drilling	
5/21/2009	4,572.00	16.74	MWD	Scientific Drilling	
5/21/2009	4,635.00	15.40	MWD	Scientific Drilling	
5/21/2009	4,698.00	14.37	MWD	Scientific Drilling	
5/21/2009	4,762.00	13.24	MWD	Scientific Drilling	
5/21/2009	4,825.00	11.86	MWD	Scientific Drilling	
5/21/2009	4,888.00	10.93	MWD	Scientific Drilling	
5/21/2009	4,952.00	9.66	MWD	Scientific Drilling	

I, the undersigned, certify that I acting in my capacity as \_\_\_\_\_ for ConocoPhillips Company, am authorized by said Company to make this report; and that said report was prepared under my supervision and directions, and that the facts stated herein are true to the best of my knowledge and belief.

Subscribed and sworn to me this \_\_\_\_\_

Notary Public in and for San Juan County, New Mexico

My Commission expires \_\_\_\_\_

Date	MD (ftKB)	Incl (°)	Method	Survey Company
5/21/2009	5,015.00	8.45	MWD	Scientific Drilling
5/21/2009	5,078.00	6.38	MWD	Scientific Drilling
5/21/2009	5,120.00	5.42	MWD	Scientific Drilling
5/21/2009	5,170.00	4.12	MWD	Scientific Drilling
6/1/2009	8,670.00	1.00	FINAL BHS	PHOENIX

RCVD SEP 29 '09

OIL CONS. DIV.

DIST. 3

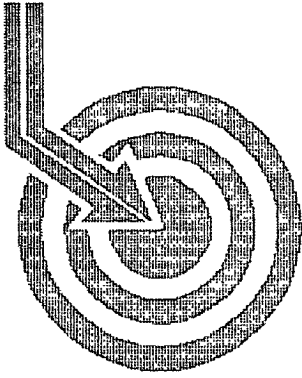
I, the undersigned, certify that I acting in my capacity as Drilling Engineer for ConocoPhillips Company, am authorized by said Company to make this report, and that said report was prepared under my supervision and directions, and that the facts stated herein are true to the best of my knowledge and belief.



Subscribed and sworn to me this Sept 22, 2009

  
Notary Public in and for San Juan County, New Mexico

My Commission expires 10/12/2010



# Scientific Drilling

## BURLINGTON RESOURCES

Field: Negro Canyon  
Site: Rio Arriba County, NM  
Well: Negro Canyon #4  
Wellpath: DH - Job #33D0509091  
Survey: 05/18/09-05/22/09  
API # 30.045.34644

RCVD SEP 29 '09

OIL CONS. DIV.

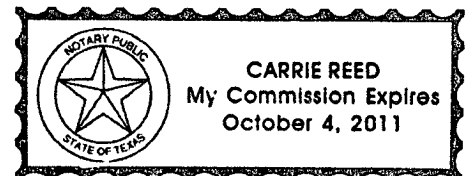
DIST. 3

This survey is correct to the best of my knowledge  
and is supported by actual field data.

.....*R. W. Barton*..... Company Representative

Notorized this date 1st of June, 2009.

*Carrie Reed*  
Notary Signature  
County of Midland  
State of Texas





# Scientific Drilling International Survey Report

<b>Company:</b> BURLINGTON RESOURCES	<b>Date:</b> 05/29/2009	<b>Time:</b> 16:53:44	<b>Page:</b> 1
<b>Field:</b> Negro Canyon	<b>Co-ordinate(NE) Reference:</b> Site: Rio Arriba County, NM, True North		
<b>Site:</b> Rio Arriba County, NM	<b>Vertical (TVD) Reference:</b> SITE 0.0		
<b>Well:</b> Negro Canyon #4	<b>Section (VS) Reference:</b> Well: (0.00N,0.00E,220.88Azi)		
<b>Wellpath:</b> DH - Job #33D0509091	<b>Survey Calculation Method:</b> Minimum Curvature	<b>Db:</b> Sybase	

<b>Survey:</b> 05/18/09-05/22/09 E-field 0'-5120'	<b>Start Date:</b> 05/18/2009	
<b>Company:</b> Scientific Drilling Internatio	<b>Engineer:</b> Drake/Drake/Clifton	
<b>Tool:</b> E-field;E-field	<b>Tied-to:</b> From Surface	

MD ft	Incl deg	Azim deg	TVD ft	VS ft	N/S ft	E/W ft	DLS deg/100ft	CIsD ft	CIsA deg
0.00	0.00	0.00	0.00	0.00	0.00	0.00	0.00	0.00	0.00
424.00	1.21	95.55	423.97	-2.59	-0.43	4.46	0.29	4.48	95.55
486.00	1.35	111.77	485.95	-3.21	-0.77	5.79	0.62	5.84	97.55
548.00	1.42	117.59	547.94	-3.62	-1.39	7.14	0.25	7.28	101.04
610.00	1.52	118.06	609.91	-3.98	-2.14	8.55	0.16	8.81	104.03
671.00	1.38	116.75	670.90	-4.34	-2.85	9.92	0.24	10.32	106.01
734.00	0.93	119.27	733.88	-4.63	-3.44	11.04	0.72	11.57	107.30
800.00	0.98	162.87	799.87	-4.44	-4.24	11.68	1.08	12.42	109.96
864.00	1.67	200.14	863.86	-3.27	-5.64	11.52	1.67	12.82	116.08
928.00	2.37	217.19	927.82	-1.08	-7.57	10.40	1.43	12.86	126.05
990.00	3.37	220.95	989.74	2.02	-9.97	8.43	1.64	13.05	139.78
1054.00	4.66	222.15	1053.58	6.50	-13.31	5.45	2.02	14.39	157.74
1117.00	5.96	221.33	1116.31	12.33	-17.67	1.57	2.07	17.74	174.91
1180.00	7.34	220.34	1178.88	19.62	-23.19	-3.19	2.20	23.41	187.84
1243.00	8.75	219.12	1241.26	28.44	-29.98	-8.82	2.25	31.25	196.40
1306.00	10.21	219.82	1303.40	38.81	-37.98	-15.42	2.32	40.99	202.10
1369.00	11.93	222.66	1365.23	50.90	-47.06	-23.41	2.86	52.56	206.45
1433.00	13.52	222.73	1427.65	64.99	-57.42	-32.97	2.48	66.21	209.86
1496.00	14.95	222.68	1488.72	80.48	-68.81	-43.48	2.27	81.39	212.29
1559.00	16.37	222.10	1549.38	97.48	-81.37	-54.94	2.27	98.18	214.03
1622.00	17.73	222.14	1609.61	115.94	-95.07	-67.33	2.16	116.49	215.30
1686.00	19.38	221.54	1670.28	136.31	-110.24	-80.91	2.60	136.75	216.27
1749.00	21.08	221.17	1729.39	158.09	-126.60	-95.30	2.71	158.46	216.97
1812.00	22.68	219.45	1787.85	181.56	-144.51	-110.47	2.74	181.90	217.40
1843.00	23.39	218.64	1816.38	193.69	-153.93	-118.11	2.51	194.02	217.50
1874.00	24.28	218.57	1844.73	206.20	-163.72	-125.93	2.87	206.55	217.57
1906.00	24.94	219.84	1873.83	219.52	-174.04	-134.35	2.64	219.87	217.67
1969.00	27.48	221.53	1930.35	247.34	-195.13	-152.50	4.20	247.65	218.01
2032.00	29.08	221.94	1985.82	277.19	-217.40	-172.38	2.56	277.44	218.41
2095.00	30.83	222.61	2040.41	308.63	-240.67	-193.54	2.83	308.83	218.81
2158.00	32.37	222.60	2094.06	341.63	-264.96	-215.88	2.44	341.78	219.17
2221.00	33.17	223.08	2147.04	375.71	-289.97	-239.07	1.34	375.81	219.50
2285.00	33.31	223.00	2200.56	410.76	-315.61	-263.01	0.23	410.83	219.81
2348.00	33.09	222.95	2253.28	445.24	-340.85	-286.53	0.35	445.28	220.05
2411.00	32.63	223.54	2306.20	479.39	-365.75	-309.95	0.89	479.42	220.28
2474.00	31.75	223.63	2359.52	512.91	-390.06	-333.09	1.40	512.93	220.50
2537.00	32.66	222.00	2412.82	546.47	-414.69	-355.90	2.00	546.47	220.64
2600.00	32.98	221.96	2465.77	580.61	-440.07	-378.74	0.51	580.61	220.72
2663.00	33.08	221.81	2518.59	614.94	-465.64	-401.67	0.21	614.94	220.78
2727.00	32.73	221.90	2572.32	649.70	-491.53	-424.86	0.55	649.70	220.84
2790.00	32.68	221.93	2625.33	683.74	-516.87	-447.60	0.08	683.74	220.89
2853.00	32.56	221.56	2678.39	717.70	-542.20	-470.22	0.37	717.70	220.93
2917.00	32.33	221.25	2732.40	752.03	-567.96	-492.92	0.44	752.03	220.95
2981.00	32.51	221.82	2786.43	786.34	-593.64	-515.68	0.55	786.34	220.98
3044.00	32.15	221.47	2839.66	820.03	-618.82	-538.06	0.64	820.03	221.01
3108.00	31.81	221.15	2893.95	853.92	-644.28	-560.44	0.59	853.92	221.02
3172.00	32.48	222.03	2948.14	887.97	-669.74	-583.05	1.28	887.97	221.04
3235.00	32.48	222.10	3001.28	921.79	-694.86	-605.71	0.06	921.80	221.08
3299.00	31.77	221.16	3055.49	955.82	-720.29	-628.32	1.36	955.83	221.10



# Scientific Drilling International Survey Report

<b>Company:</b> BURLINGTON RESOURCES	<b>Date:</b> 05/29/2009	<b>Time:</b> 16:53:44	<b>Page:</b> 2
<b>Field:</b> Negro Canyon	<b>Co-ordinate(NE) Reference:</b>	<b>Site:</b> Rio Arriba County, NM, True North	
<b>Site:</b> Rio Arriba County, NM	<b>Vertical (TVD) Reference:</b>	SITE 0.0	
<b>Well:</b> Negro Canyon #4	<b>Section (VS) Reference:</b>	Well (0.00N,0.00E,220.88Azi)	
<b>Wellpath:</b> DH - Job #33D0509091	<b>Survey Calculation Method:</b>	Minimum Curvature	<b>Db:</b> Sybase

**Survey**

MD ft	Incl deg	Azim deg	TVD ft	VS ft	N/S ft	E/W ft	DLS deg/100ft	ClsD ft	ClsA deg
3362.00	32.19	222.01	3108.92	989.19	-745.25	-650.47	0.98	989.20	221.12
3426.00	31.50	222.65	3163.29	1022.94	-770.21	-673.21	1.20	1022.96	221.16
3489.00	31.74	221.76	3216.94	1055.96	-794.68	-695.39	0.83	1055.98	221.19
3553.00	30.69	219.37	3271.67	1089.12	-819.87	-716.97	2.54	1089.14	221.17
3617.00	30.06	218.97	3326.89	1121.47	-844.96	-737.41	1.03	1121.48	221.11
3681.00	30.49	218.51	3382.16	1153.71	-870.12	-757.60	0.76	1153.72	221.05
3745.00	29.92	218.11	3437.47	1185.88	-895.39	-777.56	0.94	1185.88	220.97
3808.00	29.26	218.00	3492.25	1216.95	-919.88	-796.74	1.05	1216.95	220.90
3872.00	29.66	220.21	3547.98	1248.41	-944.30	-816.59	1.81	1248.41	220.85
3936.00	29.71	220.29	3603.58	1280.10	-968.49	-837.07	0.10	1280.10	220.84
3999.00	29.66	219.26	3658.31	1311.29	-992.47	-857.03	0.81	1311.29	220.81
4063.00	29.85	218.92	3713.88	1343.04	-1017.12	-877.06	0.40	1343.04	220.77
4127.00	29.30	219.10	3769.54	1374.61	-1041.67	-896.94	0.87	1374.62	220.73
4191.00	28.25	219.10	3825.63	1405.40	-1065.58	-916.37	1.64	1405.41	220.69
4254.00	27.22	219.04	3881.39	1434.71	-1088.34	-934.85	1.64	1434.72	220.66
4317.00	24.78	218.42	3938.01	1462.30	-1109.88	-952.13	3.90	1462.32	220.63
4381.00	22.31	217.32	3996.68	1487.83	-1130.05	-967.83	3.92	1487.85	220.58
4445.00	20.43	217.04	4056.28	1511.10	-1148.63	-981.93	2.94	1511.13	220.53
4508.00	18.45	215.99	4115.68	1532.01	-1165.47	-994.41	3.19	1532.05	220.47
4572.00	16.74	215.40	4176.69	1551.28	-1181.18	-1005.70	2.69	1551.33	220.41
4635.00	15.40	214.92	4237.22	1568.63	-1195.43	-1015.74	2.14	1568.69	220.35
4698.00	14.37	213.64	4298.11	1584.70	-1208.80	-1024.86	1.72	1584.79	220.29
4762.00	13.24	213.75	4360.26	1599.85	-1221.51	-1033.34	1.77	1599.96	220.23
4825.00	11.86	212.61	4421.75	1613.42	-1232.96	-1040.83	2.23	1613.54	220.17
4888.00	10.93	211.50	4483.51	1625.72	-1243.51	-1047.44	1.52	1625.87	220.11
4952.00	9.66	210.98	4546.48	1637.00	-1253.28	-1053.38	1.99	1637.17	220.05
5015.00	8.45	211.90	4608.69	1646.78	-1261.75	-1058.54	1.93	1646.97	220.00
5078.00	6.38	211.40	4671.16	1654.80	-1268.66	-1062.81	3.29	1655.02	219.95
5120.00	5.42	211.00	4712.94	1659.06	-1272.36	-1065.05	2.29	1659.28	219.93



**Scientific  
Drilling**

Field: Negro Canyon  
Site: Rio Arriba County, NM  
Well: Negro Canyon #4  
Wellpath: DH - Job #33D0509091  
Survey: 05/18/09-05/22/09

T/M  
↑  
Azimuths to True North  
Magnetic North: 0.00°  
Magnetic Field  
Strength: 0nT  
Dip Angle: 0.00°  
Date: 05/29/2009  
Model: igrf2000

West(-)/East(+) [200ft/in]

South(-)/North(+) [200ft/in]

