

## District I

1625 N. French Dr., Hobbs, NM 88240

## District II

1301 W Grand Avenue, Artesia, NM 88210

## District III

1000 Rio Brazos Rd., Aztec, NM 87410

## District IV

1220 S St. Francis Dr., Santa Fe, NM 87505

State of New Mexico  
Energy, Minerals & Natural Resources Department  
OIL CONSERVATION DIVISION  
1220 South St. Francis Dr.  
Santa Fe, NM 87505

Form C-102

Revised October 12, 2005

Submit to Appropriate District Office

State Lease - 7 Copies

Fee Lease - 3 Copies

**"AS DRILLED PLAT"**☐ AMENDED REPORT

## WELL LOCATION AND ACREAGE DEDICATION PLAT

<sup>1</sup> API Number <b>30-039-30724</b>	<sup>2</sup> Pool Code <b>71599 / 72319</b>	<sup>3</sup> Pool Name <b>BASIN DAKOTA / BLANCO MESAVERDE</b>
<sup>4</sup> Property Code <b>7469</b>	<sup>5</sup> Property Name <b>SAN JUAN 30-6 UNIT</b>	<sup>6</sup> Well Number <b>48M</b>
<sup>7</sup> OGRID No. <b>14538</b>	<sup>8</sup> Operator Name <b>BURLINGTON RESOURCES OIL &amp; GAS COMPANY LP</b>	<sup>9</sup> Elevation <b>6438</b>

<sup>10</sup> SURFACE LOCATION

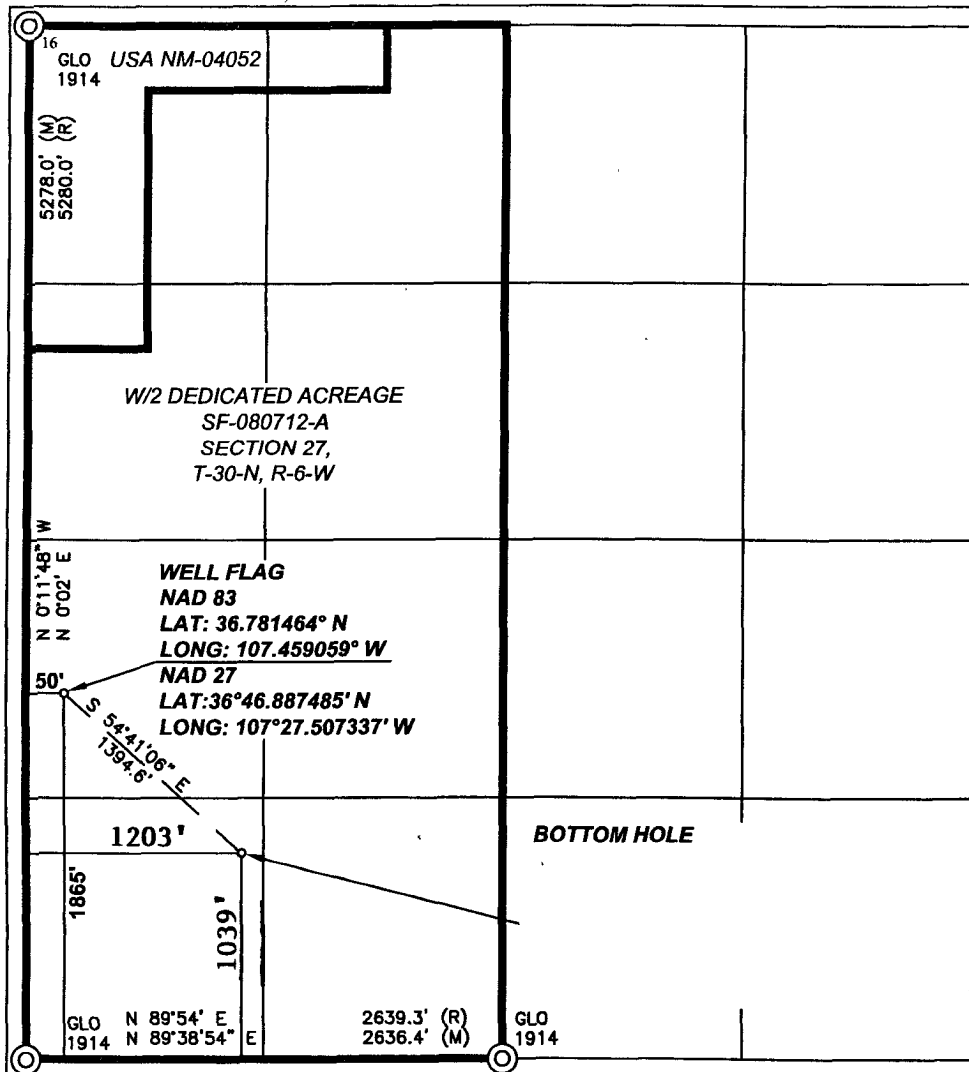
UL or lot no <b>L</b>	Section <b>27</b>	Township <b>30-N</b>	Range <b>6-W</b>	Lot Idn	Feet from the <b>1865</b>	North/South line <b>SOUTH</b>	Feet from the <b>50</b>	East/West line <b>WEST</b>	County <b>RIO ARRIBA</b>
--------------------------	----------------------	-------------------------	---------------------	---------	------------------------------	----------------------------------	----------------------------	-------------------------------	-----------------------------

<sup>11</sup> Bottom Hole Location If Different From Surface

UL or lot no. <b>M</b>	Section <b>27</b>	Township <b>30-N</b>	Range <b>6-W</b>	Lot Idn	Feet from the <b>1039</b>	North/South line <b>SOUTH</b>	Feet from the <b>1203</b>	East/West line <b>WEST</b>	County <b>RIO ARRIBA</b>
---------------------------	----------------------	-------------------------	---------------------	---------	------------------------------	----------------------------------	------------------------------	-------------------------------	-----------------------------

<sup>12</sup> Dedicated Acres <b>320.00 (W/2)</b>	<sup>13</sup> Joint or Infill	<sup>14</sup> Consolidation Code	<sup>15</sup> Order No. <b>RCWD OCT 16 '09</b>
--	-------------------------------	----------------------------------	---

NO ALLOWABLE WILL BE ASSIGNED TO THIS COMPLETION UNTIL ALL INTERESTS HAVE BEEN JIL CONS. DIV.  
CONSOLIDATED OR A NON-STANDARD UNIT HAS BEEN APPROVED BY THE DIVISION  
**DIST. 3**

<sup>17</sup> OPERATOR CERTIFICATION

I hereby certify that the information contained herein is true and complete to the best of my knowledge and belief, and that this organization either owns a working interest or unleased mineral interest in the land including the proposed bottom hole location or has a right to drill this well at this location pursuant to a contract with an owner of such a mineral or working interest, or to a voluntary pooling agreement or a compulsory pooling order heretofore entered by the division.

*Crystal Tafoya 10/14/09*  
Signature

**Crystal Tafoya**  
Printed Name

**Regulatory Technician**  
Title and E-mail Address

**October 14, 2009**  
Date

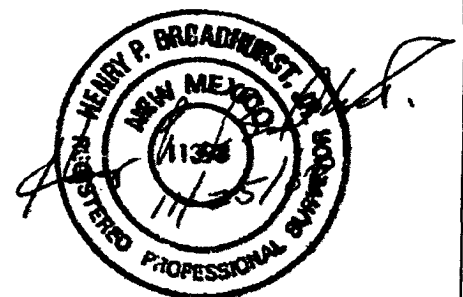
Date

<sup>18</sup> SURVEYOR CERTIFICATION

I hereby certify that the well location shown on this plat was plotted from field notes of actual surveys made by me or under my supervision, and that the same is true and correct to the best of my belief.

Date of Survey: 10/28/08

Signature and Seal of Professional Surveyor:



Certificate Number: NM 11393