

UNITED STATES  
DEPARTMENT OF THE INTERIOR  
BUREAU OF LAND MANAGEMENTFORM APPROVED  
OMB NO. 1004-0137  
Expires July 31, 2010

RECEIVED

## SUNDRY NOTICES AND REPORTS ON WELLS

Do not use this form for proposals to drill or to re-enter an abandoned well. Use Form 3160-3 (APD) for such proposals.

NOV 12 2009

SUBMIT IN TRIPLICATE - Other instructions on page 2 Farmington Field Office

## 1. Type of Well

☐ Oil Well ☒ Gas Well ☐ Other

## 2. Name of Operator

Energen Resources Corporation

## 3a. Address

2010 Afton Place, Farmington, NM 87401

## 3b. Phone No. (include area code)

505-325-6800

## 4. Location of Well (Footage, Sec., T., R., M., or Survey Description)

SHL: 655' FSL, 1685' FWL

BHL: 1900' FSL 100' FWL

Sec.26 T32N, R06W

## 5. Lease Serial No.

NM 03780

## 6. If Indian, Allottee or Tribe Name

## 7. If Unit or CA/Agreement, Name and/or No.

San Juan 32-5 Unit NP

NM NM 78422 C (FC)

## 8. Well Name and No.

San Juan 32-5 Unit 106  
NP

## 9. API Well No.

30-039-24291

## 10. Field and Pool, or Exploratory Area

Basin Fruitland Coal

## 11. County or Parish, State

Rio Arriba NM

## 12. CHECK APPROPRIATE BOX(ES) TO INDICATE NATURE OF NOTICE, REPORT, OR OTHER DATA

## TYPE OF SUBMISSION

☒ Notice of Intent☐ Subsequent Report☐ Final Abandonment Notice

## TYPE OF ACTION

☐ Acidize☐ Alter Casing☐ Casing Repair☐ Change Plans☐ Convert to Injection☐ Deepen☐ Fracture Treat☐ New Construction☐ Plug and Abandon☐ Plug Back☐ Production (Start/Resume)☐ Reclamation☒ Recomplete☐ Temporarily Abandon☐ Water Disposal☐ Water Shut-Off☐ Well Integrity☐ Other

13. Describe Proposed or Completed Operation (clearly state all pertinent details, including estimated starting date of any proposed work and approximate duration thereof. If the proposal is to deepen directionally or recompleate horizontally, give subsurface locations and measured and true vertical depths of all pertinent markers and zones. Attach the Bond under which the work will be performed or provide the Bond No. on file with BLM/BIA. Required subsequent reports shall be filed within 30 days following completion of the involved operations. If the operation results in a multiple completion or recompleation in a new interval, a Form 3160-4 shall be filed once testing has been completed. Final Abandonment Notices shall be filed only after all requirements, including reclamation, have been completed, and the operator has determined that the final site is ready for final inspection.)

Energen Resources would like to recompleate the San Juan 32-5 Unit NP #106 by drilling a horizontal lateral off of the existing vertical wellbore as indicated on the revised attached C-102 and directional wellplan. A whipstock will be set at 2853'+/- (TVD) and a window milled in the existing 7" casing from 2841'-2847'+/- (TVD). The lateral will be drilled to 5007'MD, 3106'TVD. A 4.5" 11.6 ppf, J-55, LT&C pre drilled liner will be ran and set from 2843'-5007'MD.

RCVD NOV 16 '09

OIL CONS. DIV.

DIST. 3

NOTIFY AZTEC 24 HRS  
PRIOR TO CASING & CEMENTING OF APPROVAL

Hold C104

for Directional Survey  
and "As Drilled" plat14. I hereby certify that the foregoing is true and correct  
Name (Printed/Typed)

Stephen Byers

Title Drilling Engineer

Signature

Date 11/11/2009

## THIS SPACE FOR FEDERAL OR STATE OFFICE USE

Approved by

Title

Date

Conditions of approval, if any, are attached. Approval of this notice does not warrant or certify that the applicant holds legal or equitable title to those rights in the subject lease which would entitle the applicant to conduct operations thereon.

Office

Title 18 U.S.C. Section 1001, and Title 43 U.S.C. Section 1212, makes it a crime for any person knowingly and willfully to make to any department or agency of the United States any false, fictitious or fraudulent statements or representations as to any matter within its jurisdiction.

**District I**  
1625 N. French Dr., Hobbs, NM 88240  
**District II**  
1301 W. Grand Avenue, Artesia, NM 88210  
**District III**  
1000 Rio Brazos Rd., Aztec, NM 87410  
**District IV**  
1220 S. St. Francis Dr., Santa Fe, NM 87505

State of New Mexico  
Energy, Minerals & Natural Resources Department  
**OIL CONSERVATION DIVISION**  
1220 South St. Francis Dr.  
Santa Fe, NM 87505

Form C-102  
Revised October 12, 2005  
Submit to Appropriate District Office  
State Lease - 4 Copies  
Fee Lease - 3 Copies  
☒ AMENDED REPORT

**WELL LOCATION AND ACREAGE DEDICATION PLAT**

|   |   |  |
|---|---|--|
| <sup>1</sup> API Number<br>30-039-24291 | <sup>2</sup> Pool Code<br>71629                             | <sup>3</sup> Pool Name<br>Basin Fruitland Coal |
| <sup>4</sup> Property Code<br>22045     | <sup>5</sup> Property Name<br>San Juan 32-5 Unit NP         | <sup>6</sup> Well Number<br>#106               |
| <sup>7</sup> OGRID No.<br>162928        | <sup>8</sup> Operator Name<br>ENERGEN RESOURCES CORPORATION | <sup>9</sup> Elevation<br>6386'                |

**<sup>10</sup> Surface Location**

|                    |               |                 |             |         |                      |                           |                       |                        |                      |
|--------------------|---------------|-----------------|-------------|---------|----------------------|---------------------------|-----------------------|------------------------|----------------------|
| UL or lot no.<br>N | Section<br>26 | Township<br>32N | Range<br>6W | Lot Idn | Feet from the<br>655 | North/South line<br>SOUTH | Feet from the<br>1685 | East/West line<br>WEST | County<br>RIO ARriba |
|--------------------|---------------|-----------------|-------------|---------|----------------------|---------------------------|-----------------------|------------------------|----------------------|

**<sup>11</sup> Bottom Hole Location If Different From Surface**

|                    |               |                 |             |         |                       |                           |                      |                        |                      |
|--------------------|---------------|-----------------|-------------|---------|-----------------------|---------------------------|----------------------|------------------------|----------------------|
| UL or lot no.<br>E | Section<br>26 | Township<br>32N | Range<br>6W | Lot Idn | Feet from the<br>1900 | North/South line<br>SOUTH | Feet from the<br>100 | East/West line<br>WEST | County<br>RIO ARriba |
|--------------------|---------------|-----------------|-------------|---------|-----------------------|---------------------------|----------------------|------------------------|----------------------|

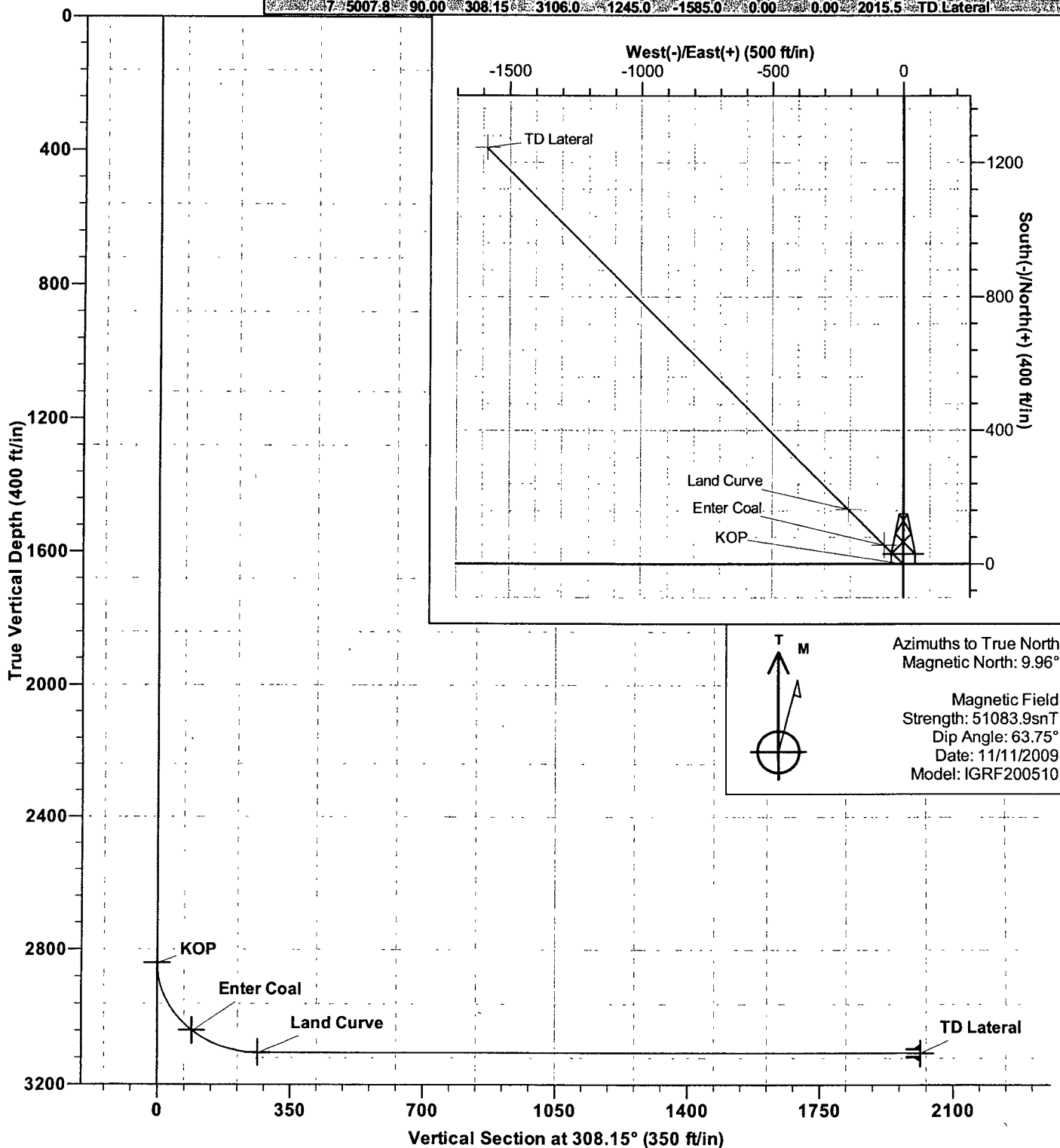
|  |                               |                                  |                         |
|--|-------------------------------|----------------------------------|-------------------------|
| <sup>12</sup> Dedicated Acres<br>320 W/2 | <sup>13</sup> Joint or Infill | <sup>14</sup> Consolidation Code | <sup>15</sup> Order No. |
|--|-------------------------------|----------------------------------|-------------------------|

No allowable will be assigned to this completion until all interests have been consolidated or a non-standard unit has been approved by the division.

|  |   |
|--|---|
|  | <p><b><sup>17</sup> OPERATOR CERTIFICATION</b></p> <p><i>I hereby certify that the information contained herein is true and complete to the best of my knowledge and belief, and that this organization either owns a working interest or unleased mineral interest in the land including the proposed bottom hole location or has a right to drill this well at this location pursuant to a contract with an owner of such a mineral or working interest, or to a voluntary pooling agreement or a compulsory pooling order heretofore entered by the division.</i></p> <p>Signature: <u>Stephen Byers</u> Date: <u>11/11/2009</u></p> <p>Printed Name: <u>STEPHEN BYERS</u></p> |
|  | <p><b><sup>18</sup> SURVEYOR CERTIFICATION</b></p> <p><i>I hereby certify that the well location shown on this plat was plotted from field notes of actual surveys made by me or under my supervision, and that the same is true and correct to the best of my belief.</i></p> <p>JULY 21, 1988</p> <p>Date of Survey</p> <p>Original Survey Conducted and Recorded By: Neale C. Edwards</p>  |
|  | <p>6857</p> <p>Certificate Number</p>   |

SECTION DETAILS

| Sec | MD     | Inc   | Azi    | TVD    | +N/-S  | +E/-W   | DLeg  | TFace  | VSec   | Target     |
|-----|--------|-------|--------|--------|--------|---------|-------|--------|--------|------------|
| 1   | 0.0    | 0.00  | 0.00   | 0.0    | 0.0    | 0.0     | 0.00  | 0.00   | 0.0    |            |
| 2   | 2841.0 | 0.00  | 0.00   | 2841.0 | 0.0    | 0.0     | 0.00  | 0.00   | 0.0    | KOP        |
| 3   | 3067.6 | 49.01 | 308.14 | 3041.0 | 56.3   | -71.7   | 21.62 | 308.14 | 91.2   | Enter Coal |
| 4   | 3162.4 | 69.49 | 308.16 | 3089.2 | 106.3  | -135.4  | 21.62 | 0.07   | 172.2  |            |
| 5   | 3162.5 | 69.49 | 308.16 | 3089.2 | 106.4  | -135.4  | 0.00  | 0.00   | 172.2  |            |
| 6   | 3257.3 | 90.00 | 308.15 | 3106.0 | 163.7  | -208.4  | 21.63 | -0.04  | 265.0  | Land Curve |
| 7   | 5007.8 | 90.00 | 308.15 | 3106.0 | 1245.0 | -1585.0 | 0.00  | 0.00   | 2015.5 | TD Lateral |



# Energen

## DIRECTIONAL PLAN

**Company:** Energen Resources  
**Project:** SJBR Sec.26-T32N-R06W  
**Site:** Eul Canyon  
**Well:** San Juan 32-5 Unit NP #106  
**Wellbore:** Re-Entry Sidetrack OPE FTC  
**Design:** Plan #1

**Local Co-ordinate Reference:** Well San Juan 32-5 Unit NP #106  
**TVD Reference:** KB @ 6398.0ft (KB)  
**MD Reference:** KB @ 6398.0ft (KB)  
**North Reference:** True  
**Survey Calculation Method:** Minimum Curvature  
**Database:** EDM 2003.16 Single User Db

### Planned Survey

| MD<br>(ft) | TVD<br>(ft) | Inc<br>(°) | Azi<br>(°) | Build<br>(°/100ft) | N/S<br>(ft) | E/W<br>(ft) | V. Sec<br>(ft) |
|------------|-------------|------------|------------|--------------------|-------------|-------------|----------------|
| 3,700.0    | 3,106.0     | 90.00      | 308.15     | 0.00               | 437.2       | -556.6      | 707.7          |
| 3,800.0    | 3,106.0     | 90.00      | 308.15     | 0.00               | 499.0       | -635.2      | 807.7          |
| 3,900.0    | 3,106.0     | 90.00      | 308.15     | 0.00               | 560.7       | -713.8      | 907.7          |
| 4,000.0    | 3,106.0     | 90.00      | 308.15     | 0.00               | 622.5       | -792.5      | 1,007.7        |
| 4,100.0    | 3,106.0     | 90.00      | 308.15     | 0.00               | 684.3       | -871.1      | 1,107.7        |
| 4,200.0    | 3,106.0     | 90.00      | 308.15     | 0.00               | 746.1       | -949.8      | 1,207.7        |
| 4,300.0    | 3,106.0     | 90.00      | 308.15     | 0.00               | 807.8       | -1,028.4    | 1,307.7        |
| 4,400.0    | 3,106.0     | 90.00      | 308.15     | 0.00               | 869.6       | -1,107.0    | 1,407.7        |
| 4,500.0    | 3,106.0     | 90.00      | 308.15     | 0.00               | 931.4       | -1,185.7    | 1,507.7        |
| 4,600.0    | 3,106.0     | 90.00      | 308.15     | 0.00               | 993.1       | -1,264.3    | 1,607.7        |
| 4,700.0    | 3,106.0     | 90.00      | 308.15     | 0.00               | 1,054.9     | -1,343.0    | 1,707.7        |
| 4,800.0    | 3,106.0     | 90.00      | 308.15     | 0.00               | 1,116.7     | -1,421.6    | 1,807.7        |
| 4,900.0    | 3,106.0     | 90.00      | 308.15     | 0.00               | 1,178.5     | -1,500.2    | 1,907.7        |
| 5,007.8    | 3,106.0     | 90.00      | 308.15     | 0.00               | 1,245.0     | -1,585.0    | 2,015.5        |

TD Lateral

### Targets

| Target Name<br>- hit/miss target<br>- Shape | Dip Angle<br>(°) | Dip Dir.<br>(°) | TVD<br>(ft) | +N/-S<br>(ft) | +E/-W<br>(ft) | Northing<br>(ft) | Easting<br>(ft) | Latitude         | Longitude         |
|---|------------------|-----------------|-------------|---------------|---------------|------------------|-----------------|------------------|-------------------|
| Enter Coal<br>- plan hits target<br>- Point | 0.00             | 0.00            | 3,041.0     | 56.3          | -71.7         | 2,164,915.94     | 1,295,435.42    | 36° 56' 37.121 N | 107° 25' 49.927 W |
| TD Lateral<br>- plan hits target<br>- Point | 0.00             | 0.00            | 3,106.0     | 1,245.0       | -1,585.0      | 2,166,123.28     | 1,293,936.96    | 36° 56' 48.873 N | 107° 26' 8.569 W  |
| Land Curve<br>- plan hits target<br>- Point | 0.00             | 0.00            | 3,106.0     | 163.7         | -208.4        | 2,165,025.02     | 1,295,300.07    | 36° 56' 38.183 N | 107° 25' 51.611 W |
| KOP<br>- plan hits target<br>- Point        | 0.00             | 0.00            | 2,841.0     | 0.0           | 0.0           | 2,164,858.75     | 1,295,506.42    | 36° 56' 36.564 N | 107° 25' 49.044 W |

### Casing Points

| Measured<br>Depth<br>(ft) | Vertical<br>Depth<br>(ft) | Name  | Casing<br>Diameter<br>(") | Hole<br>Diameter<br>(") |
|---------------------------|---------------------------|-------|---------------------------|-------------------------|
| 5,007.0                   | 3,106.0                   | Liner | 4-1/2                     | 6-1/4                   |

Checked By: \_\_\_\_\_ Approved By: \_\_\_\_\_ Date: \_\_\_\_\_