

UNITED STATES
DEPARTMENT OF THE INTERIOR
BUREAU OF LAND MANAGEMENT

RECEIVED

NOV 12 2009

Sundry Notices and Reports on Wells

Bureau of Land Management
Farmington Field Office

1. Type of Well
GAS

Lease Number
SF 078135

6. If Indian, All. or
Tribe Name

2. Name of Operator

BURLINGTON

RESOURCES OIL & GAS COMPANY LP

7. Unit Agreement Name

3. Address & Phone No. of Operator

P.O. Box 4289, Farmington, NM 87499

8. Huerfanito Unit
Well Name & Number
Huerfanito Unit 103

4. Location of Well, Footage, Sec., T, R, M

Unit N (SESW), 990' FSL & 1650' FWL, Section 3, T26N, R9W, NMPM

9. API Well No.

10. 30-045-11704
Field and Pool

11. Basin DK/Ballard PC
County and State
San Juan Co., NM

12. CHECK APPROPRIATE BOX TO INDICATE NATURE OF NOTICE, REPORT, OTHER DATA

Type of Submission
☒ Notice of Intent

Type of Action

☐ Abandonment

☐ Change of Plans

☒ Other MIT + casing installation

☐ Subsequent Report

☐ Recompletion

☐ New Construction

☐ Plugging

☐ Non-Routine Fracturing

☐ Final Abandonment

☐ Casing Repair

☐ Water Shut off

☐ Altering Casing

☐ Conversion to Injection

13. Describe Proposed or Completed Operations

Burlington Resources requests to perform a MIT per the attached procedure and Wellbore Schematic.

SEE ATTACHED FOR
CONDITIONS OF APPROVAL

RCVD DEC 1 '09

OIL CONS. DIV.

DIST. 3

14. I hereby certify that the foregoing is true and correct.

Signed Rhonda Rogers

Rhonda Rogers Title Staff Regulatory Technician Date 11/5/09

(This space for Federal or State Office use)

APPROVED BY

[Signature]

Title

Reg. Eng.

Date

11/23/09

CONDITION OF APPROVAL, if any:

Title 18 U.S.C. Section 1001, makes it a crime for any person knowingly and willfully to make any department or agency of the United States any false, fictitious or fraudulent statements or representations as to any matter within its jurisdiction

SEE ATTACHED FOR
CONDITIONS OF APPROVAL

NMOCD

A CEMENT BOND LOG FROM PBTD - SURFACE MUST BE
SUBMITTED TO NMOCD AND REVIEWED PRIOR TO RUNNING
LINER.

ConocoPhillips
HUERFANITO UNIT 103
MIT

Lat 36° 30' 45.36" N

Long 107° 46' 44.22" W

PROCEDURE

1. Hold pre-job safety meeting. Comply with all NMOCD, BLM, and COPC safety and environmental regulations. Test rig anchors prior to moving in rig.
2. MIRU work over rig. Check casing, tubing, and bradenhead pressures and record them in Wellview.
3. RU blow lines from casing valves and begin blowing down casing pressure. Kill well with 2% KCl, if necessary.
4. ND wellhead and NU BOPE.

5. TOOH with tubing (details below)

Number	Description
213	2-3/8" Tubing joints
1	2-3/8" pup joint (2')
1	2-3/8" Tubing joint (31.97')
1	2-3/8" S nipple (ID 1.78")
1	Sawtooth Collar

Visually inspect tubing and record findings in Wellview. Make note of corrosion or scale. LD and replace any bad joints.

6. Round Trip with watermelon mill to 6400'.

7. RIH w/ CIBP and set @ 6376'.

8. RIH w/ packer and set @ 2169'. PT the casing to 600 psi.

9. If PT passes, call the Engineer.

10. If the PT fails, reset the packer 10' above the CIBP and check for leak. If there is no leak in the CIBP, isolate the casing leak. Report the injection rate. Call the Engineer to get approval from the OCD and BLM for repairs.

11. Drop 10' of sand on the plug and allow time for sand to settle down.

12. TIH w/ 3.5" 9.3 lb/ft (ID = 2.992) flush joint casing with float collar and guide shoe and tag sand and pickup 10'. Attach last joint to mandrel and land in wellhead.

13. RU cement crew and pressure test cement lines. Call engineer to confirm the type of cement mixture. Pump cement 100% excess (~325 sxs)(150 ft3 volume) and circulate it to surface. Drop wiper plug and displace w/ 1% KCL water until plug bumps. Shut-in and wait on cement. **Note the Pictured Cliffs will be plugged as the cement is circulated to surface.**

14. MIRU Cameron to change the well head configuration.

15. Spot in trailer 1-1/4' HSL drill pipe, and associated X-overs, subs and a 2-7/8" bit.

16. PU 2-7/8" bit and sub and RIH w/ 1-1/4" drill pipe to drill up cement, and cleanout to PBTD. **NOTE: use stabbing guide to protect threads and do not over torque.**

17. POOH w/ drill pipe, laying down. Move out trailer w/ drill pipe and spot in trailer w/ 2-1/16" IJ tubing
18. TIH with tubing and drifting procedure as follow (setting bottom up): Land tubing @ 6587' and F-Nipple @ 6586'
- 1 2-1/16" expandable check
 - 1 F-Nipple
 - ~206 2-1/16" tubing joints
 - x 2-1/16" pup joints as necessary
19. Set standing valve and pressure test tubing to 1000 psi, retrieve standing valve.
20. ND BOP, NU wellhead, blow out expendable check. Make swab run if necessary to kick off well. Notify Lease operator to return to well production. RDMO.

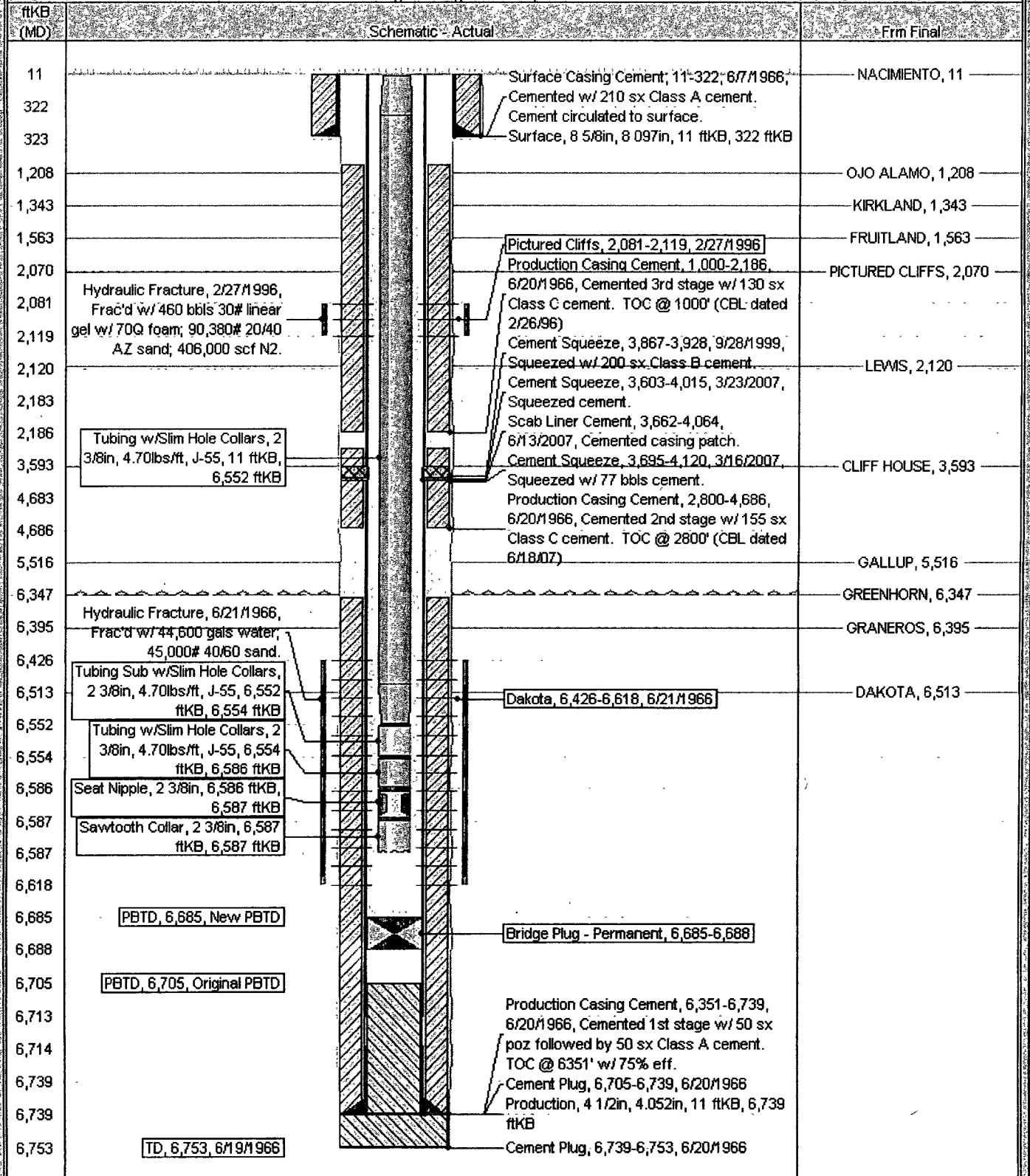
Current Schematic

ConocoPhillips

Well Name: HUERFANITO UNIT #103

API/ UWI	Surface Legal Location	Field Name	License No.	State/Province	Well Configuration Type	Edit
3004511704	03-026N-009W	BALLARD PC (GAS) #0050		NEW MEXICO		
Ground Elevation (ft)	Original KB/RT Elevation (ft)	KB-Grout Distance (ft)	KB-Casing Flange Distance (ft)	KB-Tubing Hanger Distance (ft)		
6,319.00	6,330.00	11.00	6,330.00	6,330.00		

Well Config: Original Hole, 8/27/2009 9:18:47 AM



BLM CONDITIONS OF APPROVAL

Workover and Recompletion Operations:

- 1. The Pictured Cliffs perforations from 2081' – 2119' must be squeezed cemented and successfully pass a pressure test of 500# prior to commencing liner installation operations.**
- 2. A properly functioning BOP and related equipment must be installed prior to commencing workover and/or recompletion operations.**

SURFACE USE OPERATIONS:

The following Stipulations will apply to this well unless a particular Surface Managing Agency or private surface owner has supplied to BLM and operator a contradictory environmental stipulation. The failure of operator to comply with these requirements may result in assessments or penalties pursuant to 43 CFR 3163.1 or 3163.2. A copy of these conditions of approval shall be present on location during construction, drilling and reclamation activity.

An agreement between operator and fee landowner will take precedence over BLM surface stipulations unless (in reference to 43 CFR Part 3160) 1) BLM determines that operator's actions will affect adjacent Federal or Indian surface, or 2) operator does not maintain well area and lease premises in a workmanlike manner with due regard for safety, conservation and appearance, or 3) no such agreement exists, or 4) in the event of well abandonment, minimal Federal restoration requirements will be required.

STANDARD STIPULATIONS: All surface areas disturbed during work-over activities and not in use for production activities will be reseeded. This should occur in the first 90 days after completion of work-over activities.

SPECIAL STIPULATIONS:

- 1. Pits will be fenced during work-over operation.**
- 2. All disturbance will be kept on existing pad.**
- 3. All pits will be pulled and closed immediately upon completion of the work-over or recompletion activities.**
- 4. Pits will be lined with an impervious material at least 12 mils thick.**