

UNITED STATES  
DEPARTMENT OF THE INTERIOR  
BUREAU OF LAND MANAGEMENT

SUBMIT IN TRIPLICATE\*  
(Other instructions on  
reverse side)

FORM APPROVED  
OMB NO. 1004-0136  
Expires: February 28, 1995

APPLICATION FOR PERMIT TO DRILL OR DEEPEN

1a. TYPE OF WORK

DRILL ☒

DEEPEN ☐

070 Farmington,

b. TYPE OF WELL

OIL WELL ☐

GAS WELL ☒

OTHER

SINGLE ZONE ☐

MULTIPLE ZONE ☒

2. NAME OF OPERATOR

XTO Energy Inc.

3. ADDRESS AND TELEPHONE NO.

2700 Farmington Ave., Bldg. K. Ste 1 Farmington, NM 87401

4. LOCATION OF WELL (Report location clearly and in accordance with any State requirements.)

2,415' FSL & 660' FEL Sec 18, T27N, R08W  
At proposed prod. zone

same

14. DISTANCE IN MILES AND DIRECTION FROM NEAREST TOWN OR POST OFFICE\*

Approx 24 air miles south down Largo Canyon from the Blanco NM Post Office

15. DISTANCE FROM PROPOSED\*  
LOCATION TO NEAREST  
PROPERTY OR LEASE LINE, FT.  
(Also to nearest drlg. unit line, if any)

660'

16. NO. OF ACRES IN LEASE

2400.96

17. NO. OF ACRES ASSIGNED  
TO THIS WELL

320 DK & MV, 160 Mancos

18. DISTANCE FROM PROPOSED LOCATION\*  
TO NEAREST WELL, DRILLING, COMPLETED,  
OR APPLIED FOR, ON THIS LEASE, FT.

1800'

19. PROPOSED DEPTH

7,675'

20. ROTARY OR CABLE TOOLS

0'-7,675' w/Rotary Tools

21. ELEVATIONS (Show whether DF, RT, GR, etc.)

6,752' GL

22. APPROX. DATE WORK WILL START\*

Winter 2004

23. PROPOSED CASING AND CEMENTING PROGRAM

SIZE OF HOLE	GRADE SIZE OF CASING	WEIGHT PER FOOT	SETTING DEPTH	QUANTITY OF CEMENT
12-1/4"	9-5/8", J-55	36#	265'	150 sx Type III
8-3/4"	7", J-55	20#	2,500' 3000'	400 sx Type III cement
6-1/4"	4-1/2", J-55	10.5#	6,800' 7675'	400 sx Premium Lite cement

DRILLING OPERATIONS AUTHORIZED ARE  
SUBJECT TO COMPLIANCE WITH ATTACHED  
"GENERAL REQUIREMENTS".

XTO Energy Inc. plans to drill the above mentioned well as described in the enclosed Surface Use Program.

An El Paso Field Services welltie plat is also included for ROW.

This action is subject to technical and  
procedural review pursuant to 43 CFR 3165.3  
and appeal pursuant to 43 CFR 3165.4

APD/ROW

IN ABOVE SPACE DESCRIBE PROPOSED PROGRAM: If proposal is to deepen, give data on present productive zone and proposed productive zone. If proposal is to drill or deepen directionally, give pertinent data on subsurface locations and measured and true vertical depths. Give blowout preventer program, if any.

24.

SIGNED

JW Patten

TITLE Drilling Engineer

DATE 10/1/03

(This space for Federal or State office use)

PERMIT NO.

APPROVAL DATE

Application approval does not warrant or certify that the applicant holds legal or equitable title to those rights in the subject lease which would entitle the applicant to conduct operations thereon.  
CONDITIONS OF APPROVAL, IF ANY:

/s/ Charlie Beecham

DEC 30 2003

APPROVED BY

TITLE

DATE

\*See Instructions On Reverse Side

Title 18 U.S.C. Section 1001, makes it a crime for any person knowingly and willfully to make to any department or agency of the United States any false, fictitious or fraudulent statements or representations as to any matter within its jurisdiction.

DISTRICT I  
P.O. Box 1980, Hobbs, N.M. 88241-1980

DISTRICT II  
P.O. Drawer DD, Artesia, N.M. 88211-0719

DISTRICT III  
1000 Rio Brazos Rd., Aztec, N.M. 87410

DISTRICT IV  
PO Box 2088, Santa Fe, NM 87504-2088

State of New Mexico  
Bureau of Geology, Minerals & Natural Resources Department

OIL CONSERVATION DIVISION

P.O. Box 2088  
Santa Fe, NM 87504-2088

RECEIVED

70 OCT -1 PM 4:22

Form C-102

Revised February 21, 1994

Instructions on back

Submit to Appropriate District Office

State Lease - 4 Copies

Fee Lease - 3 Copies

☐ AMENDED REPORT

WELL LOCATION AND ACREAGE DEDICATION PLAT

*API Number 30-045-31926		*Pool Code 71599	*Pool Name Basin Dakota
*Property Code 22608	*Property Name FLORANCE		*Well Number 71
*OGRID No. 167067	*Operator Name XTO ENERGY INC.		*Elevation 6752

<sup>10</sup> Surface Location

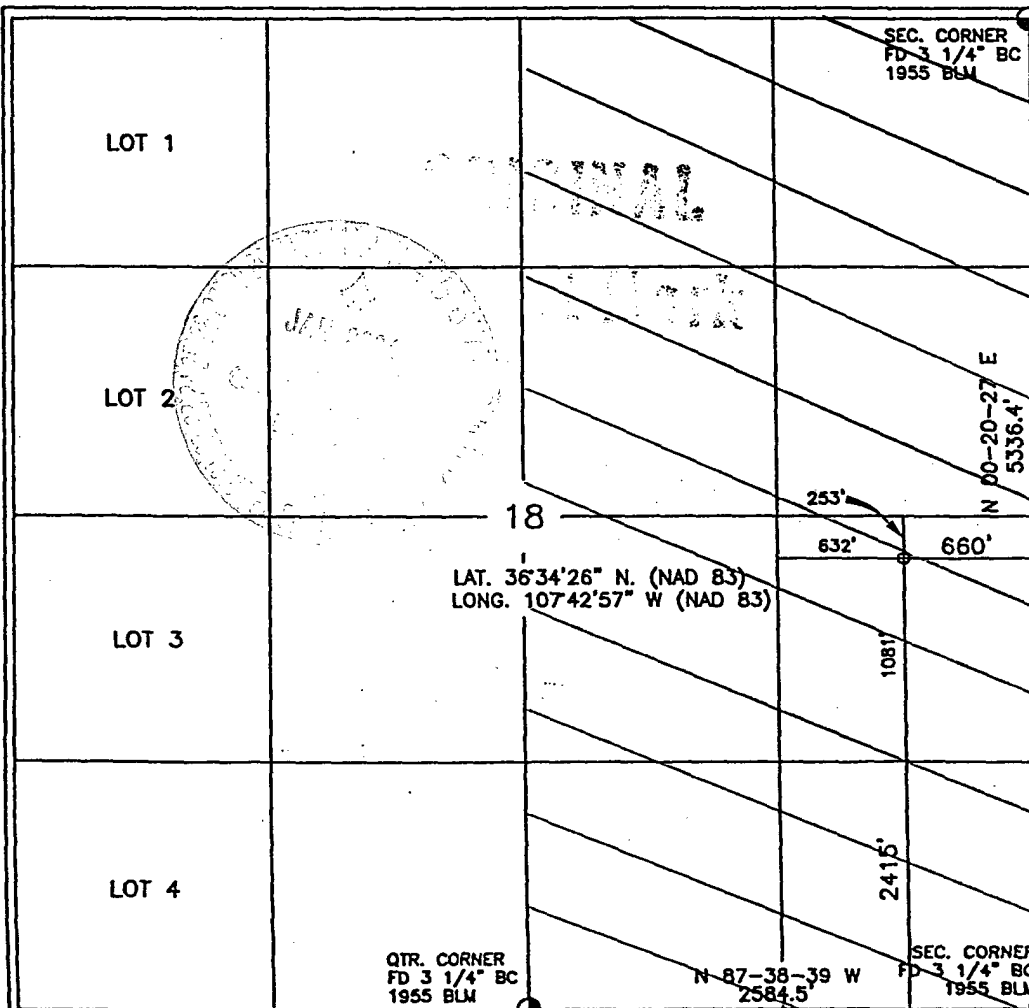
UL or lot no.	Section	Township	Range	Lot Idn	Feet from the	North/South line	Feet from the	East/West line	County
1	18	27-N	8-W		2415	SOUTH	660	EAST	SAN JUAN

<sup>11</sup> Bottom Hole Location If Different From Surface

UL or lot no.	Section	Township	Range	Lot Idn	Feet from the	North/South line	Feet from the	East/West line	County
<sup>12</sup> Dedicated Acres 320 E/2		<sup>13</sup> Joint or Infill I		<sup>14</sup> Consolidation Code		<sup>15</sup> Order No.			

NO ALLOWABLE WILL BE ASSIGNED TO THIS COMPLETION UNTIL ALL INTERESTS HAVE BEEN CONSOLIDATED  
OR A NON-STANDARD UNIT HAS BEEN APPROVED BY THE DIVISION

16



17 OPERATOR CERTIFICATION

I hereby certify that the information contained herein is true and complete to the best of my knowledge and belief

Signature

Printed Name

Title

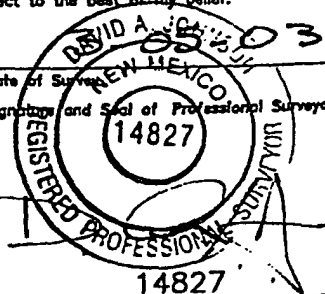
Date

18 SURVEYOR CERTIFICATION

I hereby certify that the well location shown on this plat was plotted from field notes of actual surveys made by me or under my supervision, and that the same is true and correct to the best of my belief.

Date of Survey

Signature and Seal of Professional Surveyor:



Certificate Number

DISTRICT I  
P.O. Box 1980, Hobbs, N.M. 88241-1980

DISTRICT II  
P.O. Drawer DD, Artesia, N.M. 88211-0719

DISTRICT III  
1000 Rio Brazos Rd., Aztec, N.M. 87410

DISTRICT IV  
PO Box 2088, Santa Fe, NM 87504-2088

State of New Mexico  
Regy. Minerals & Natural Resources Department

OIL CONSERVATION DIVISION

P.O. Box 2088  
Santa Fe, NM 87504-2088

RECEIVED

1994 OCT -1 PM 4:22  
070 Farmington, NM

Form C-102  
Revised February 21, 1994  
Instructions on back  
Submit to Appropriate District Office  
State Lease - 4 Copies  
Fee Lease - 3 Copies

☐ AMENDED REPORT

WELL LOCATION AND ACREAGE DEDICATION PLAT

<sup>1</sup> API Number 30-045-31926		<sup>2</sup> Pool Code 72319		<sup>3</sup> Pool Name Blanco Mesaverde	
<sup>4</sup> Property Code 22608		<sup>5</sup> Property Name FLORANCE		<sup>6</sup> Well Number 71	
<sup>7</sup> GRID No. 167067		<sup>8</sup> Operator Name XTO ENERGY INC.		<sup>9</sup> Elevation 6752	

<sup>10</sup> Surface Location

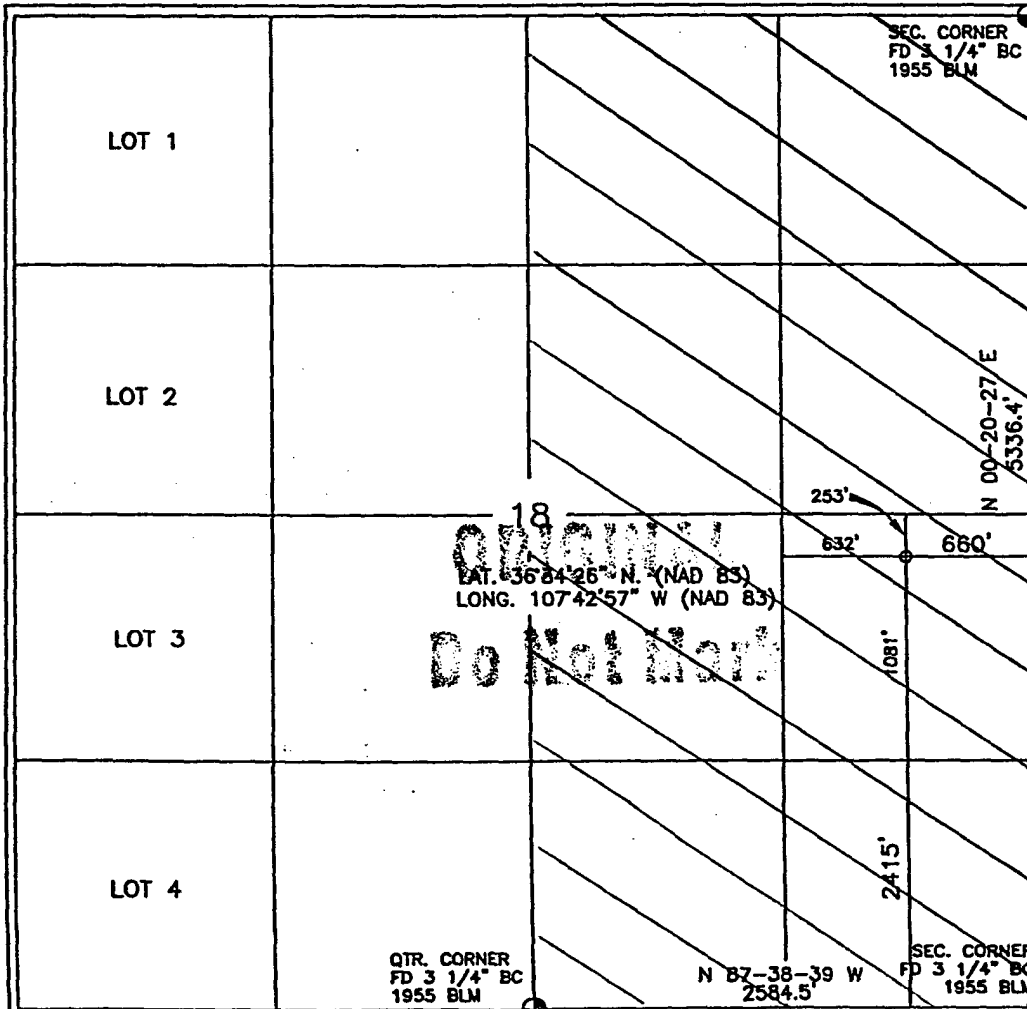
UL or lot no.	Section	Township	Range	Lot Idn	Feet from the	North/South line	Feet from the	East/West line	County
1	18	27-N	8-W		2415	SOUTH	660	EAST	SAN JUAN

<sup>11</sup> Bottom Hole Location If Different From Surface

UL or lot no.	Section	Township	Range	Lot Idn	Feet from the	North/South line	Feet from the	East/West line	County
<sup>12</sup> Dedicated Acres 320 E12			<sup>13</sup> Joint or Infill I		<sup>14</sup> Consolidation Code		<sup>15</sup> Order No.		

NO ALLOWABLE WILL BE ASSIGNED TO THIS COMPLETION UNTIL ALL INTERESTS HAVE BEEN CONSOLIDATED  
OR A NON-STANDARD UNIT HAS BEEN APPROVED BY THE DIVISION

16



17 OPERATOR CERTIFICATION

I hereby certify that the information contained herein is true and complete to the best of my knowledge and belief

Kelly K Small  
Signature  
Kelly K Small  
Printed Name  
Drilling Assistant  
Title  
311103  
Date

18 SURVEYOR CERTIFICATION

I hereby certify that the well location shown on this plat was plotted from field notes of actual surveys made by me or under my supervision, and that the same is true and correct to the best of my belief.

DAVID A. JACOBSON  
Date of Survey  
NEW MEXICO  
Signature and Seal of Professional Surveyor:  
14827  
Certificate Number

DISTRICT I  
P.O. Box 1980, Hobbs, N.M. 88241-1980

DISTRICT II  
P.O. Drawer DD, Artesia, N.M. 88211-0719

DISTRICT III  
1000 Rio Brazos Rd., Aztec, N.M. 87410

DISTRICT IV  
PO Box 2088, Santa Fe, NM 87504-2088

State of New Mexico  
Regy. Minerals & Natural Resources Department

OIL CONSERVATION DIVISION

P.O. Box 2088  
Santa Fe, NM 87504-2088

RECEIVED

PM 4:23

070 Farmington, NM

Form C-102  
Revised February 21, 1994  
Instructions on back  
Submit to Appropriate District Office  
State Lease - 4 Copies  
Fee Lease - 3 Copies

☐ AMENDED REPORT

WELL LOCATION AND ACREAGE DEDICATION PLAT

<sup>1</sup> API Number 30-045-31926		<sup>2</sup> Pool Code 97232	<sup>3</sup> Pool Name BASIN MANLOS
<sup>4</sup> Property Code 167067	<sup>5</sup> Property Name FLORANCE		<sup>6</sup> Well Number 71
<sup>7</sup> GRID No. 167067	<sup>8</sup> Operator Name XTO ENERGY INC.		<sup>9</sup> Elevation 6752

<sup>10</sup> Surface Location

UL or lot no.	Section	Township	Range	Lot Idn	Feet from the	North/South line	Feet from the	East/West line	County
I	18	27-N	8-W		2415	SOUTH	660	EAST	SAN JUAN

<sup>11</sup> Bottom Hole Location If Different From Surface

UL or lot no.	Section	Township	Range	Lot Idn	Feet from the	North/South line	Feet from the	East/West line	County
<sup>12</sup> Dedicated Acres 160 SE / 4		<sup>13</sup> Joint or Infill		<sup>14</sup> Consolidation Code		<sup>15</sup> Order No.			

NO ALLOWABLE WILL BE ASSIGNED TO THIS COMPLETION UNTIL ALL INTERESTS HAVE BEEN CONSOLIDATED  
OR A NON-STANDARD UNIT HAS BEEN APPROVED BY THE DIVISION

16

LOT 1			SEC. CORNER FD 3 1/4" BC 1955 BLM
LOT 2			
LOT 3			
LOT 4			

18

LAT. 36°34'26" N. (NAD 83)  
LONG. 107°42'57" W (NAD 83)

253'

632'

660'

1081'

2415'

N 00-20-27 E  
5336.4'

N 87-38-39 W  
2584.5'

QTR. CORNER  
FD 3 1/4" BC  
1955 BLM

SEC. CORNER  
FD 3 1/4" BC  
1955 BLM

17 OPERATOR CERTIFICATION

I hereby certify that the information contained herein is true and complete to the best of my knowledge and belief

Signature Jeffrey W. Patton

Printed Name JEFFREY W. PATTON

Title DRILLING ENGINEER

Date 10-1-03

18 SURVEYOR CERTIFICATION

I hereby certify that the well location shown on this plat was plotted from field notes of actual surveys made by me or under my supervision, and that the same is true and correct to the best of my belief.

Date of Survey 10-1-03

Signature and Seal of Professional Surveyor

14827

14827

Certificate Number

# XTO ENERGY INC.

Florance #71

APD Data

October 1, 2003

Surface Location: 2415' FSL & 660' FEL, Sec 18, T27N, R08W County: San Juan State: New Mexico

TOTAL DEPTH: ±7,675'  
GR ELEV: 6,752'

OBJECTIVE: Dakota/Mesaverde/Mancos  
Est KB ELEV: 6,765' (13' AGL)

## 1. MUD PROGRAM:

INTERVAL	0' to 265'	265' to 3,000'	3,000' to TD
HOLE SIZE	12-1/4"	8-3/4"	6-1/4"
MUD TYPE	FW/Native Mud	FW/Polymer	Air/Foam
WEIGHT	8.6-8.8	8.6-9.0	
VISCOSITY	28-32	29-34	
WATER LOSS	NC	NC	

Remarks: Use fibrous materials as needed to control seepage and lost circulation. Pump high viscosity sweeps as needed for hole cleaning. RU air compressors after setting the intermediate csg. Drill with air or foam to TD.

## 2. CASING PROGRAM:

Surface Casing: 9-5/8" casing to be set at ± 265' in 8.6 ppg mud

Interval	Length	Wt	Gr	Cplg	Coll Rating (psi)	Burst Rating (psi)	Jt Str (M-lbs)	ID (in)	Drift (in)	SF Coll	SF Burst	SF Ten
0'-265'	265'	36.0#	J-55	STC	2020	3520	394	8.921	8.765	5.98	5.68	15.73

Intermediate Casing: 7" casing to be set at ±3,000' in 9.0 ppg mud.

Interval	Length	Wt	Gr	Cplg	Coll Rating (psi)	Burst Rating (psi)	Jt Str (M-lbs)	ID (in)	Drift (in)	SF Coll	SF Burst	SF Ten
0'-3,000'	3,000'	20.0#	J-55	STC	2270	3740	234	6.456	6.331	1.15	1.31	2.57

Production Casing: 4-1/2" casing to be set at 7,675' in air.

Interval	Length	Wt	Gr	Cplg	Coll Rating (psi)	Burst Rating (psi)	Jt Str (M-lbs)	ID (in)	Drift (in)	SF Coll	SF Burst	SF Ten
0'-7,675'	7,675'	10.5#	J-55	STC	4010	4790	132	4.052	3.927	1.33	1.20	1.90

# EXHIBIT E

3. WELLHEAD:

- A. Bradenhead: 9-5/8" x 7" 2,000 psig WP (4,000 psig test).  
Casinghead: 7" x 4-1/2" 3,000 psig WP (6,000 psig test).

4. CEMENT PROGRAM (Slurry design may change slightly, but the plan is to circulate cement to surface on both casing strings):

- A. Surface: 9-5/8", 36.0#, J-55, STC casing to be set at  $\pm 265'$ .

Lead: 150 sx of Type III or equivalent cement containing accelerator and LCM typically mixed at 14.5 ppg, 1.39 ft<sup>3</sup>/sk, & 6.30 gal wtr/sk.

*Total slurry volume is 209 ft<sup>3</sup>, 100% excess of calculated annular volume to 265'.*

- B. Intermediate: 7", 20.0#, J-55, STC casing to be set at  $\pm 3,000'$ .

Lead: 250 sx of Type III or equivalent cement containing extender, accelerator and LCM typically mixed at 11.4 ppg, 3.03 ft<sup>3</sup>/sk, 18.51 gal wtr/sx.

Tail: 150 sx of Type III or equivalent cement containing accelerator and LCM typically mixed at 14.5 ppg, 1.41 ft<sup>3</sup>/sk, 6.30 gal wtr/sx.

*Total slurry volume is 969 ft<sup>3</sup>, circulated to surface. This value is  $\pm 100\%$  (excess) over gage hole volume.*

- C. Production: 4-1/2", 10.5#, J-55, STC casing to be set at  $\pm 7,675'$ .

Lead: 250 sx of Class "H" Premium Lite High Strength (65/35/6) containing dispersant, fluid loss, salt and LCM typically mixed at 12.5 ppg, 2.01 ft<sup>3</sup>/sk, 10.12 gal wtr/sx.

Tail: 150 sx of Class "H" or equivalent cement containing extender, dispersant, fluid loss and LCM typically mixed at 14.2 ppg, 1.54 ft<sup>3</sup>/sk, 7.50 gal wtr/sx..

*Total estimated slurry volume for the 4-1/2" production casing is 734 ft<sup>3</sup> for 5,175' of fill. Est. TOC should be @  $\pm 2,500'$ . 40% (excess) over gage hole volume has been added to the number of sacks indicated.*

*Note: The slurry design may change slightly based upon actual conditions. Final cement volumes will be determined for the caliper logs plus 40%.*

5. LOGGING PROGRAM:

- A. Mud Logger: A two man mud logging crew will come on the hole @ 4,000' and remain on the hole until TD.

- B. Open Hole Logs as follows: Run Dual Induction/MSFL/GR/CAL/SP/CNL/LDT (lithodensity) from TD to the bottom of the intermediate csg (@  $\pm 3,000'$  MD). Run cased hole GR/CCL from TD to surface.

**EXHIBIT E**

# BOP SCHEMATIC FOR DRILLING OPERATIONS CLASS 1 (2M) NORMAL PRESSURE

## TESTING PROCEDURE

### 1. Test BOP after installation:

Pressure test BOP to 200-300  
psig (low pressure) for 5 min.

Test BOP to Working Press or  
to 70% internal yield of surf csg  
(10 min).

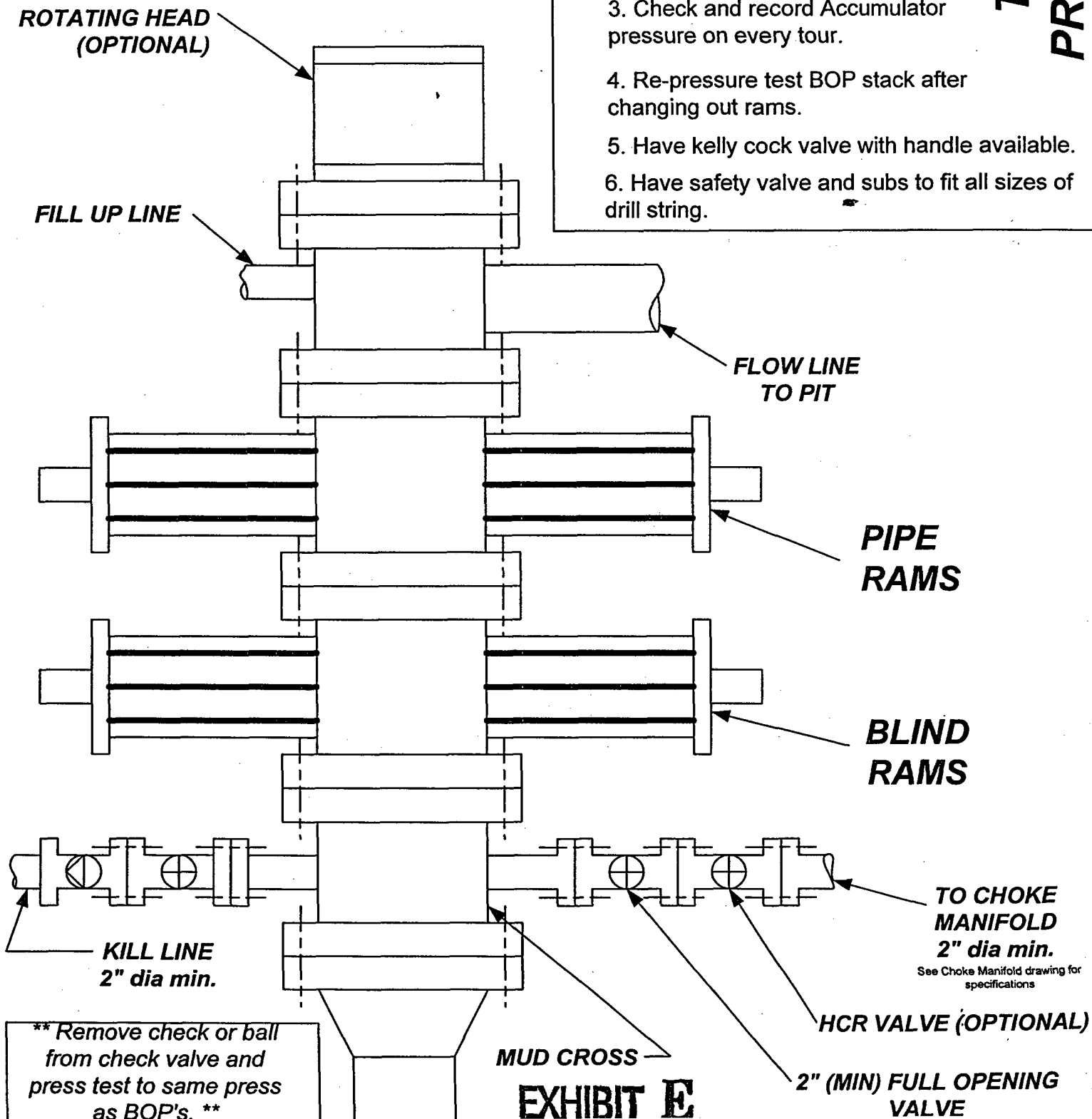
### 2. Test operation of (both) rams on every trip.

### 3. Check and record Accumulator pressure on every tour.

### 4. Re-pressure test BOP stack after changing out rams.

### 5. Have kelly cock valve with handle available.

### 6. Have safety valve and subs to fit all sizes of drill string.



**EXHIBIT E**