

UNITED STATES
DEPARTMENT OF THE INTERIOR
BUREAU OF LAND MANAGEMENT

APPLICATION FOR PERMIT TO DRILL, DEEPEN, OR PLUG BACK

1a. Type of Work DRILL	5. Lease Number NMNM-015545 Unit Reporting Number	
1b. Type of Well GAS	6. If Indian, All. or Tribe	
2. Operator BURLINGTON RESOURCES Oil & Gas Company	7. Unit Agreement Name	
3. Address & Phone No. of Operator PO Box 4289, Farmington, NM 87499 (505) 326-9700	8. Farm or Lease Name Brown 9. Well Number 100S	
4. Location of Well 1525' FSL, 1790' FEL Latitude 36° 59.13, Longitude 107° 53.38	10. Field, Pool, Wildcat Basin Fruitland Coal 11. Sec., Twn, Rge, Mer. (NMPM) ✓ Sec. 9, T32N, R10W API # 30-045- 32035	
14. Distance in Miles from Nearest Town 15.5 miles from Aztec	12. County San Juan	13. State NM
15. Distance from Proposed Location to Nearest Property or Lease Line 1525'	17. Acres Assigned to Well 334.06 All	
16. Acres in Lease		
18. Distance from Proposed Location to Nearest Well, Drlg, Compl, or Applied for on this Lease 22'		
19. Proposed Depth 3617'	20. Rotary or Cable Tools Rotary	
21. Elevations (DF, FT, GR, Etc.) 6806' GR	22. Approx. Date Work will Start	
23. Proposed Casing and Cementing Program See Operations Plan attached		
24. Authorized by: <u>Nancy Olthmann</u> Senior Staff Specialist	<u>9-30-03</u> Date	

PERMIT NO. _____ APPROVAL DATE _____
APPROVED BY /s/ David J. Mankiewicz TITLE _____ DATE DEC 11 2003

Archaeological Report to be submitted

Threatened and Endangered Species Report to be submitted

NOTE: This format is issued in lieu of U.S. BLM Form 3160-3

Title 18 U.S.C. Section 1001, makes it a crime for any person knowingly and willfully to make to any department or agency of the United States any false, fictitious or fraudulent statements or presentations as to any matter within its jurisdiction.

This action is subject to technical and
procedural review pursuant to 43 CFR 3165.2
and appeal pursuant to 43 CFR 3165.4

DRILLING OPERATIONS AUTHORIZED ARE
SUBJECT TO COMPLIANCE WITH ATTACHED
"GENERAL REQUIREMENTS".

NMOC

DISTRICT I
1625 N. French Dr., Hobbs, N.M. 88240

State of New Mexico
Energy, Minerals & Natural Resources Department

Form C-102
Revised August 15, 2000

DISTRICT II
611 South First, Artesia, N.M. 88210

OIL CONSERVATION DIVISION

2040 South Pacheco
Santa Fe, NM 87505

Submit to Appropriate District Office
State Lease - 4 Copies
Fee Lease - 3 Copies

DISTRICT III
1000 Rio Brazos Rd., Aztec, N.M. 87410

DISTRICT IV
2040 South Pacheco, Santa Fe, NM 87505

☐ AMENDED REPORT

WELL LOCATION AND ACREAGE DEDICATION PLAT

¹ API Number 30-045- 32035	² Pool Code 71629	³ Pool Name Basin Fruitland Coal
⁴ Property Code 6861	⁵ Property Name BROWN	⁶ Well Number 100S
⁷ OGRIID No. 14538	⁸ Operator Name BURLINGTON RESOURCES OIL & GAS COMPANY LP	⁹ Elevation 6806'

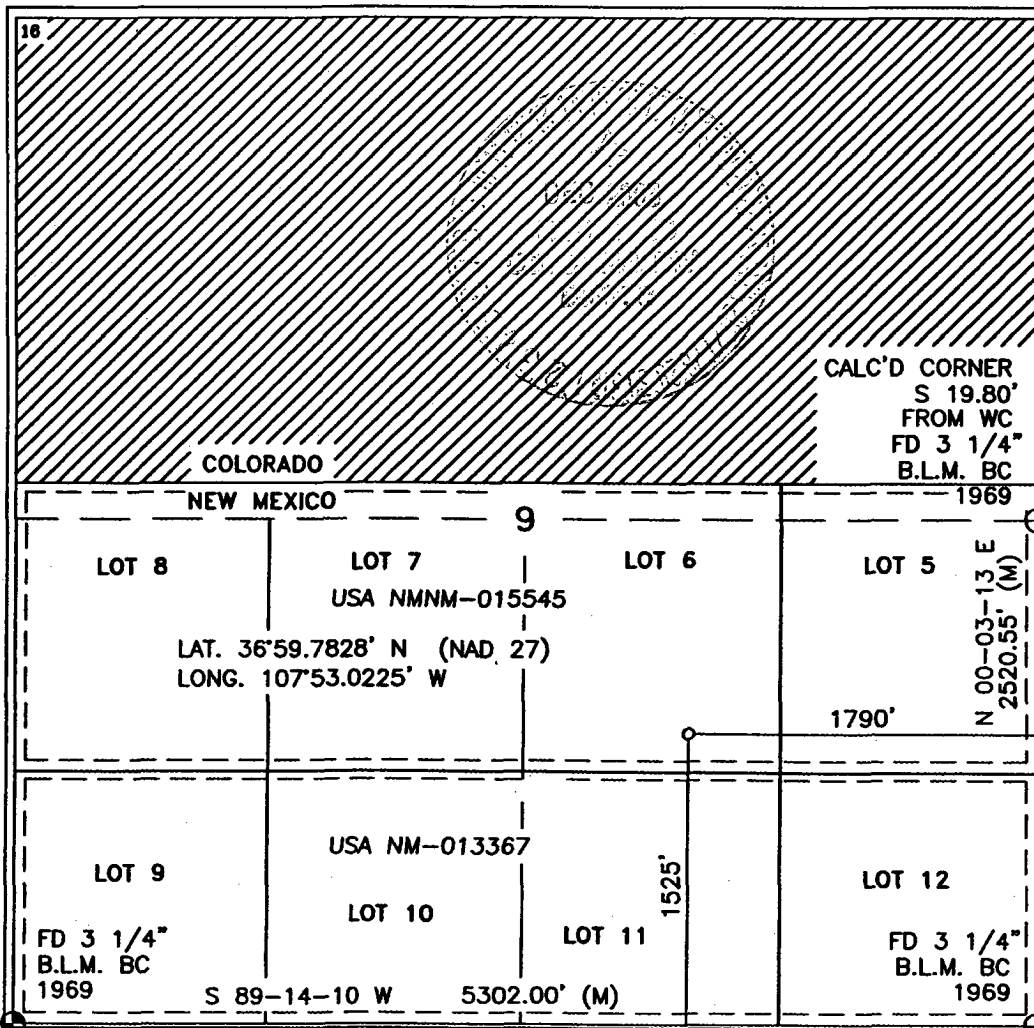
¹⁰ Surface Location

UL or lot no.	Section	Township	Range	Lot Idn	Feet from the	North/South line	Feet from the	East/West line	County
J	9	32-N	10-W		1525'	SOUTH	1790'	EAST	SAN JUAN

¹¹ Bottom Hole Location If Different From Surface

UL or lot no.	Section	Township	Range	Lot Idn	Feet from the	North/South line	Feet from the	East/West line	County
¹² Dedicated Acres 334.06			¹³ Joint or Infill		¹⁴ Consolidation Code		¹⁵ Order No.		

NO ALLOWABLE WILL BE ASSIGNED TO THIS COMPLETION UNTIL ALL INTERESTS HAVE BEEN CONSOLIDATED
OR A NON-STANDARD UNIT HAS BEEN APPROVED BY THE DIVISION



17 OPERATOR CERTIFICATION

I hereby certify that the information contained herein is true and complete to the best of my knowledge and belief

Nancy Oltmanns
Signature
Nancy Oltmanns
Printed Name
Senior Staff Specialist
Title
9-30-03
Date

18 SURVEYOR CERTIFICATION

I hereby certify that the well location shown on this plat was plotted from field notes of actual surveys made by me or under my supervision, and that the same is true and correct to the best of my belief.

DAVID A. JOHNSON
Date
Signature and Seal of Professional Surveyor:
14827
14827
Certificate Number

OPERATIONS PLAN

Well Name: Brown #100S
Location: 1525' FSL, 1790' FEL, Section 9, T-32-N, R-10-W
Latitude 36° 59.13, Longitude 107° 53.38
San Juan County, NM
Formation: Basin Fruitland Coal
Elevation: 6806' GR

Formation:	Top	Bottom	Contents
Surface	San Jose	1684'	
Ojo Alamo	1684'	1772'	aquifer
Kirtland	1772'	3117'	gas
Fruitland	3117'	3261'	gas
Intermediate casing	3211'		
Top of Coal	3261'	3544'	
Base of Coal	3544'		
Pictured Cliffs	3548'		
Total Depth	3617'		

Logging Program:

Open hole - None
Mud log - TD to 3211'

Coring Program: none

Mud Program:

Interval	Type	Weight	Vis.	Fluid Loss
0- 120'	Spud	8.4-9.0	40-50	no control
120-3211'	Non-dispersed	8.4-9.0	30-60	no control
3211-3617'	Air/Mist			no control

Casing Program (as listed, the equivalent, or better):

Hole Size	Depth Interval	Csg. Size	Wt.	Grade
12 1/4"	0' - 120'	9 5/8"	32.3#	H-40
8 3/4"	0' - 3211'	7"	20.0#	J-55
6 1/4"	3211' - 3617'	open hole		

Alternate Casing Program (as listed, the equivalent, or better):

Hole Size	Depth Interval	Csg. Size	Wt.	Grade
12 1/4"	0' - 120'	9 5/8"	32.3#	H-40
8 3/4"	0' - 3211'	7"	20.0#	J-55
6 1/4"	3171' - 3617'	5 1/2"	15.5#	J-55

Tubing Program:

0' - 3617' 2 3/8" 4.7# J-55

Float Equipment: 9 5/8" surface casing - saw tooth guide shoe.
Centralizers will be run in accordance with Onshore Order #2.

7" intermediate casing - guide shoe and self-fill float collar.
Standard centralizers run every other joint above shoe. Two turbolizing type centralizers - one below and one into the base of the Ojo Alamo @ 1772'. Standard centralizers thereafter every fourth joint up to the base of the surface pipe.

Brown #1008

Page 2

Wellhead Equipment: 9 5/8" x 7" x 2 3/8" x 11" 3000 psi xmas tree assembly.

Cementing:

9 5/8" surface casing - cement with 23 sk Type I, II cement with 20% flyash, mixed at 14.5 ppg, 1.61 cu.ft. per sack yield (37 cu.ft. of slurry, bring cement to surface) or equivalent. Wait on cement for 24 hours for pre-set holes or 8 hrs for conventionally set holes before pressure testing or drilling out from under surface. Test BOP and casing to 600 psi for 30 minutes.

Type III, 2% CaCl₂, 0.25 pps Celloflake
14.5 ppg, 1.41 ft³/sk

7" intermediate casing - lead w/281 sacks Premium Lite cement with 3% calcium chloride, 0.25 pps Celloflake, 5 pps LCM-1, 0.4% fluid loss, 0.4% sodium metasilicate. Tail with 90 sacks Type III cement with 1% calcium chloride, 0.25 pps Celloflake, 0.2% fluid loss (724 cu.ft., 50% excess to circulate to surface).

5 1/2" liner - will not be cemented if run.

Note: If open hole logs are run, cement volumes will be based on 25% excess over caliper volumes.

BOP and tests:

Surface to intermediate TD - 11" 2000 psi (minimum) double gate BOP stack (Reference Figure #1). Prior to drilling out surface casing, test BOP and casing to 600 psi/30 min.

Intermediate TD to Total Depth - 7 1/6" 2000 psi (minimum) double gate BOP stack (Reference Figure #2). Prior to drilling out intermediate casing, test BOP and casing to 1500 psi for 30 minutes; all pipe rams and casing to 1500 psi for 30 minutes each.

From surface to TD - choke manifold (Reference Figure #3).

Pipe rams will be actuated at least once each day and blind rams actuated once each trip to test proper functioning. An upper kelly cock valve with handle and drill string safety valves to fit each drill string will be maintained and available on the rig floor.

Additional information:

- The Fruitland Coal formation will be completed.
- Anticipated pore pressure for the Fruitland is 500 psi.
- This gas is dedicated.
- All of Section 9 is dedicated to this well.

Drilling Engineer:

Jim McCarthy

Date:

October 1, 2003