

State of New Mexico  
Energy, Minerals & Natural Resources

Form C-101  
Revised March 17, 1999

District I  
1625 N. French Dr., Hobbs, NM 88240  
District II  
811 S. 1st Street, Artesia, NM 88210  
District III  
1000 Rio Brazos Rd., Aztec, NM 87410  
District IV  
1220 S. St. Francis Dr., Santa Fe, NM 87505

Oil Conservation Division  
1220 S. St. Francis Dr.  
Santa Fe, NM 87505

Submit to appropriate District Office  
State Lease - 6 Copies  
Fee Lease - 5 Copies

AMENDED REPORT

**APPLICATION FOR PERMIT TO DRILL, RE-ENTER, DEEPEN, PLUGBACK, OR ADD A ZONE**

<sup>1</sup> Operator Name and Address <b>XTO Energy Inc.</b> <b>2700 Farmington Ave., Bldg. K. Ste 1</b>		<sup>2</sup> OGRID Number <b>167067</b>
<sup>4</sup> Property Code <b>22639</b>	<sup>5</sup> Property Name <b>State Gas Com "BC"</b>	<sup>3</sup> API Number <b>30-045-32108</b>
		<sup>6</sup> Well No. <b>#2</b>

<sup>7</sup> Surface Location

UL or lot no.	Section	Township	Range	Lot. Idn	Feet from the	North/South Line	Feet from the	East/West line	County
<b>C</b>	<b>32</b>	<b>31N</b>	<b>12W</b>		<b>730'</b>	<b>North</b>	<b>1380'</b>	<b>West</b>	<b>San Juan</b>

<sup>8</sup> Proposed Bottom Hole Location If Different From Surface

UL or lot no.	Section	Township	Range	Lot. Idn	Feet from the	North/South Line	Feet from the	East/West line	County

<sup>9</sup> Proposed Pool 1 <b>Basin Fruitland Coal</b>	<sup>10</sup> Proposed Pool 2
---	-------------------------------

<sup>11</sup> Work Type Code <b>N</b>	<sup>12</sup> Well Type Code <b>G</b>	<sup>13</sup> Cable/Rotary <b>Rotary</b>	<sup>14</sup> Lease Type Code <b>State</b>	<sup>15</sup> Ground Level Elevation <b>5,984' Ground Level</b>
<sup>16</sup> Multiple <b>N</b>	<sup>17</sup> Proposed Depth <b>2,600'</b>	<sup>18</sup> Formation <b>Fruitland Coal</b>	<sup>19</sup> Contractor <b>Stewart Bros.</b>	<sup>20</sup> Spud Date <b>Winter 2004</b>

<sup>21</sup> Proposed Casing and Cement Program

Hole Size	Casing Size	Casing weight/foot	Setting Depth	Sacks of Cement	Estimated TOC
<b>8-3/4"</b>	<b>7"</b>	<b>20.0#, J-55, STC</b>	<b>200'</b>	<b>75 sx</b>	<b>Surface</b>
<b>6-1/4"</b>	<b>4-1/2"</b>	<b>10.5#, J-55, STC</b>	<b>2,600'</b>	<b>170 sx</b>	<b>Surface</b>

<sup>22</sup> Describe the proposed program. If this application is to DEEPEN or PLUG BACK, give the data on the present productive zone and proposed new productive zone. Describe the blowout prevention program, if any. Use additional sheets if necessary.

**Surface:** 75 sx of Type III cement w/2% CC & 1/4#/sx cello (14.8 ppg, 1.39 cuft). Circ to surface.

**Production:** 100 sx Type III with 8% gel & 1/4#/sx cello mixed at 11.4 ppg & 3.03 cuft/sx followed by 70 sx Type III cmt w/1% CC & 1/4#/sx cello mixed at 14.5 ppg & 1.41 cuft/sx. Circ to surface.

**Remarks:** Use 40% excess over volume calculated from op hole logs to determine final cement volume.

**BOP diagram is attached.**

<sup>23</sup> I hereby certify that the information given above is true and complete to the best of my knowledge and belief.	<b>OIL CONSERVATION DIVISION</b>	
Signature: <i>JW Patton 1/12/04</i>	Approved by: <i>[Signature]</i>	
Printed name: <b>Jeffrey W. Patton</b>	Title: <b>DEPUTY OIL &amp; GAS INSPECTOR, DIST. #8</b>	
Title: <b>Drilling Engineer</b>	Approval Date: <b>JAN 13 2004</b>	Expiration Date: <b>JAN 13 2005</b>
Date:	Phone:	Conditions of Approval:
		Attached <input type="checkbox"/>

DISTRICT I  
P.O. Box 1980, Hobbs, N.M. 88241-1980

State of New Mexico  
Energy, Minerals & Natural Resources Department

Form C-102  
Revised February 21, 1994

DISTRICT II  
P.O. Drawer DD, Artesia, N.M. 88211-0719

Instructions on back  
Submit to Appropriate District Office  
State Lease - 4 Copies  
Fee Lease - 3 Copies

DISTRICT III  
1000 Rto. Brazos Rd., Aztec, N.M. 87410

OIL CONSERVATION DIVISION  
P.O. Box 2088  
Santa Fe, NM 87504-2088

DISTRICT IV  
PO Box 2088, Santa Fe, NM 87504-2088

AMENDED REPORT

WELL LOCATION AND ACREAGE DEDICATION PLAT

<sup>1</sup> API Number 30045-32108		<sup>1</sup> Pool Code 71629	<sup>1</sup> Pool Name Basin Fruitland coal
<sup>2</sup> Property Code 22639	<sup>2</sup> Property Name STATE GAS COM BC		<sup>2</sup> Well Number 2
<sup>3</sup> GRID No. 1107067	<sup>3</sup> Operator Name XTO ENERGY INC.		<sup>3</sup> Elevation 5984

<sup>10</sup> Surface Location

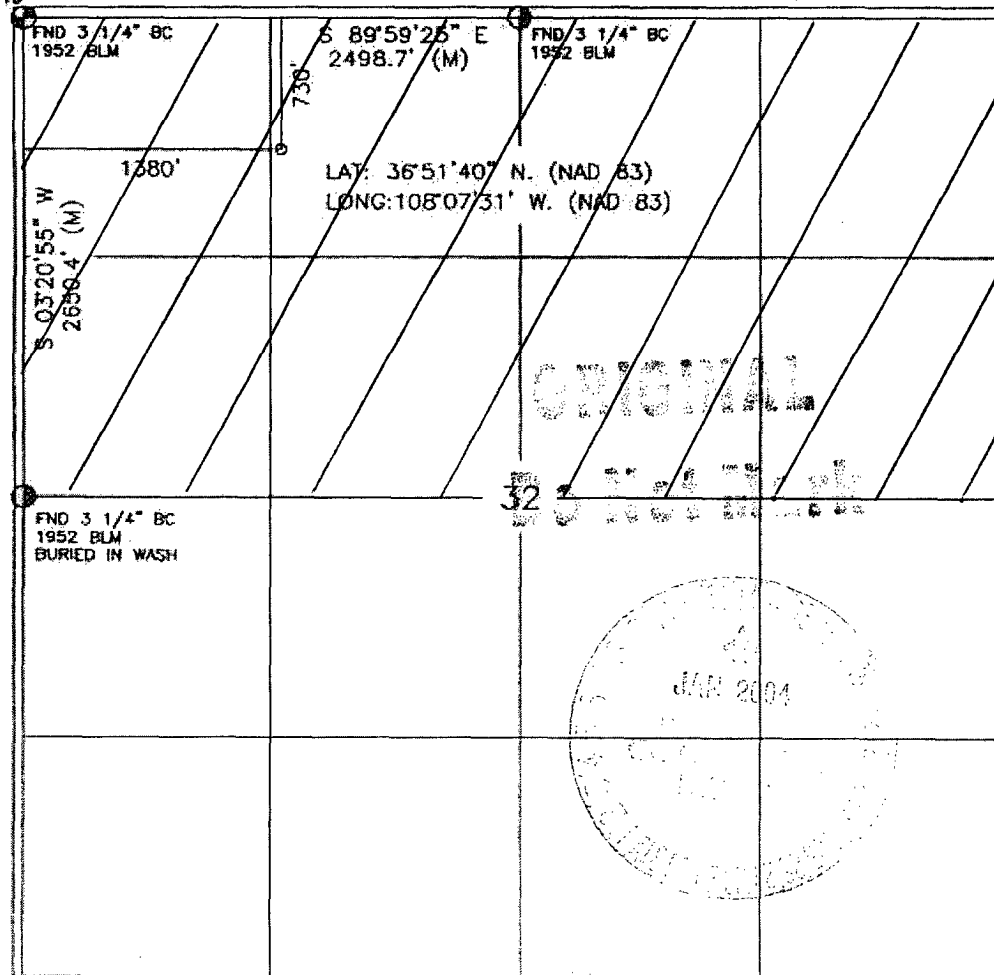
UL or lot no.	Section	Township	Range	Lot Idn	Feet from the	North/South line	Feet from the	East/West line	County
C	32	31-N	12-W		730	NORTH	1380	WEST	SAN JUAN

<sup>11</sup> Bottom Hole Location If Different From Surface

UL or lot no.	Section	Township	Range	Lot Idn	Feet from the	North/South line	Feet from the	East/West line	County

<sup>12</sup> Dedicated Acres 320 N/2	<sup>13</sup> Joint or Infill I	<sup>14</sup> Consolidation Code	<sup>15</sup> Order No.
--	------------------------------------	----------------------------------	-------------------------

NO ALLOWABLE WILL BE ASSIGNED TO THIS COMPLETION UNTIL ALL INTERESTS HAVE BEEN CONSOLIDATED OR A NON-STANDARD UNIT HAS BEEN APPROVED BY THE DIVISION



17 OPERATOR CERTIFICATION

I hereby certify that the information contained herein is true and complete to the best of my knowledge and belief

*Kelly K Small*  
Signature  
Kelly K Small  
Printed Name  
Drilling Assistant  
This  
01/09/04  
Date

18 SURVEYOR CERTIFICATION

I hereby certify that the well location shown on this plat was plotted from field notes of actual surveys made by me or under my supervision, and that the same is true and correct to the best of my knowledge and belief

*[Signature]*  
Date of Survey  
Signature and Seal of Professional Surveyor

14827  
Certificate Number

# BOP SCHEMATIC FOR DRILLING OPERATIONS CLASS 1 (2M) NORMAL PRESSURE

## TESTING PROCEDURE

1. Test BOP after installation:

Pressure test BOP to 200-300 psig (low pressure) for 5 min.

Test BOP to Working Press or to 70% internal yield of surf csg (10 min).

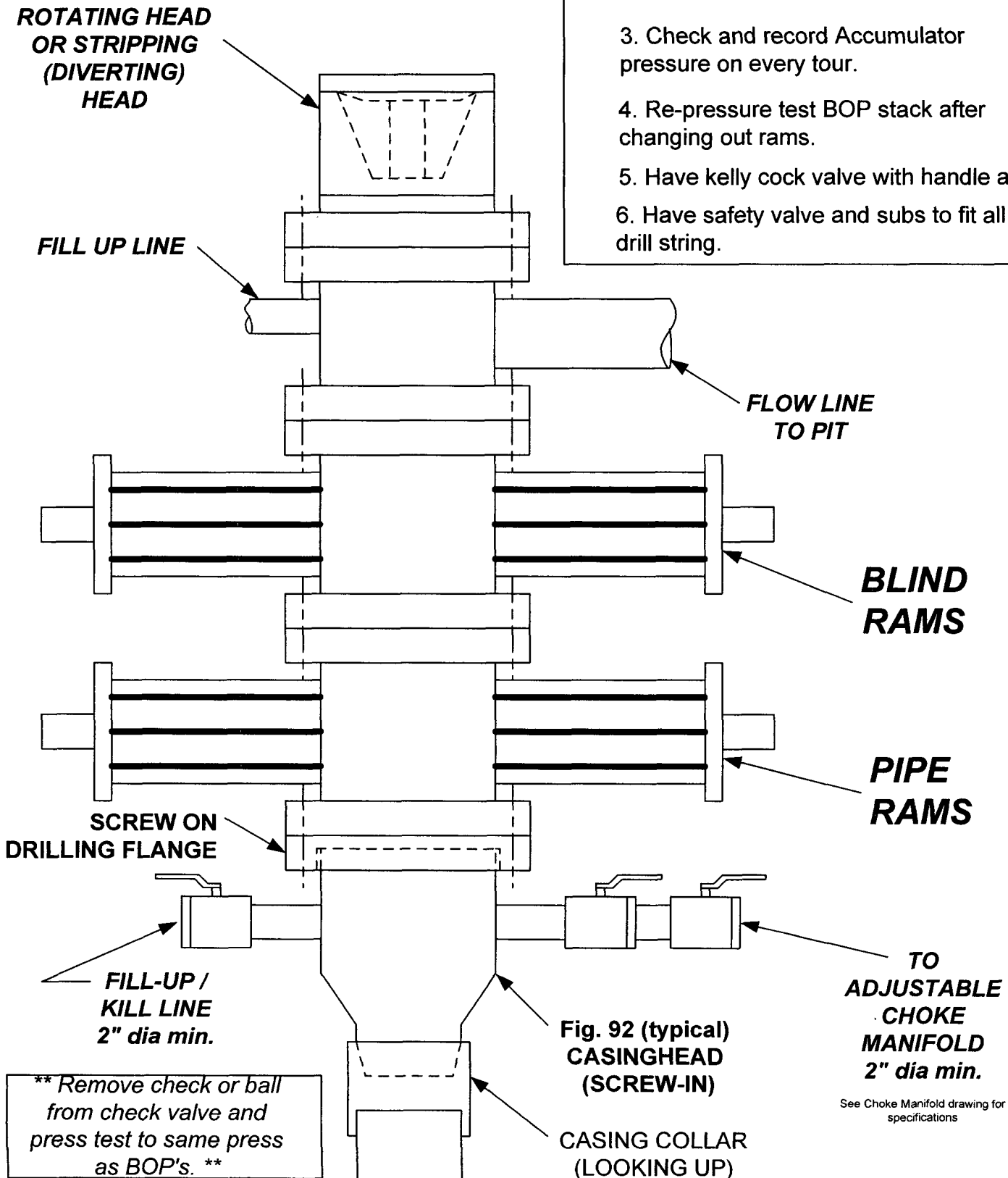
2. Test operation of (both) rams on every trip.

3. Check and record Accumulator pressure on every tour.

4. Re-pressure test BOP stack after changing out rams.

5. Have kelly cock valve with handle available.

6. Have safety valve and subs to fit all sizes of drill string.



**\*\* Remove check or ball from check valve and press test to same press as BOP's. \*\***

See Choke Manifold drawing for specifications