

UNITED STATES  
DEPARTMENT OF THE INTERIOR  
BUREAU OF LAND MANAGEMENT

APPLICATION FOR PERMIT TO DRILL, DEEPEN, OR PLUG BACK

1a. Type of Work DRILL	5. Lease Number NM82815 Unit Reporting Number	
1b. Type of Well GAS	6. If Indian, All. or Tribe	
2. Operator <b>BURLINGTON RESOURCES</b> Oil & Gas Company	7. Unit Agreement Name	
3. Address & Phone No. of Operator PO Box 4289, Farmington, NM 87499 (505) 326-9700	8. Farm or Lease Name Lewis Park 9. Well Number 101S	
4. Location of Well 2575' FNL, 1300' FWL  Latitude 36° 53.8285'N, Longitude 107° 37.8672'W	10. Field, Pool, Wildcat Basin Fruitland Coal  11. Sec., Twn, Rge, Mer. (NMPM) F Sec 13, T-31-N, R-8-W API # 30-045- <b>32087</b>	
14. Distance in Miles from Nearest Town 20.2 Miles to Navajo Dam, NM	12. County San Juan	13. State NM
15. Distance from Proposed Location to Nearest Property or Lease Line 1300'	17. Acres Assigned to Well 320 <i>W/S</i>	
16. Acres in Lease	18. Distance from Proposed Location to Nearest Well, Drig, Compl, or Applied for on this Lease 1672'	
19. Proposed Depth 3601	20. Rotary or Cable Tools Rotary	
21. Elevations (DF, FT, GR, Etc.) 6619'	22. Approx. Date Work will Start	
23. Proposed Casing and Cementing Program See Operations Plan attached		
24. Authorized by: <u>Frances Bond</u> Regulatory/Compliance Assistant		<u>10-22-03</u> Date

PERMIT NO. \_\_\_\_\_

APPROVAL DATE \_\_\_\_\_

APPROVED BY /s/ David J. Markiewicz

TITLE \_\_\_\_\_

DATE JAN 13 2004

Archaeological Report Attached

Threatened and Endangered Species Report Attached

NOTE: This format is issued in lieu of U.S. BLM Form 3160-3

Title 18 U.S.C. Section 1001, makes it a crime for any person knowingly and willfully to make to any department or agency of the United States any false, fictitious or fraudulent statements or presentations as to any matter within its jurisdiction.

This action is subject to technical and  
procedural review pursuant to 43 CFR 8165.8  
and appeal pursuant to 43 CFR 8166.4

NMOCED

DRILLING OPERATIONS AUTHORIZED ARE  
SUBJECT TO COMPLIANCE WITH ATTACHED  
"GENERAL REQUIREMENTS".

DISTRICT I  
1625 N. French Dr., Hobbs, N.M. 88240

DISTRICT II  
611 South First, Artesia, N.M. 88210

DISTRICT III  
1000 Rio Brazos Rd., Aztec, N.M. 87410

DISTRICT IV  
2040 South Pacheco, Santa Fe, NM 87505

State of New Mexico  
Energy, Minerals & Natural Resources Department

Form C-102  
Revised August 15, 2000

Submit to Appropriate District Office  
State Lease - 4 Copies  
Fee Lease - 3 Copies

OIL CONSERVATION DIVISION

2040 South Pacheco  
Santa Fe, NM 87505

☐ AMENDED REPORT

WELL LOCATION AND ACREAGE DEDICATION PLAT

*API Number 30-045- <b>32087</b>		*Pool Code 71629	*Pool Name Basin Fruitland Coal
*Property Code 7260	*Property Name LEWIS PARK		*Well Number 101S
*UGRID No. 14538	*Operator Name BURLINGTON RESOURCES OIL AND GAS, INC.		*Elevation 6619'

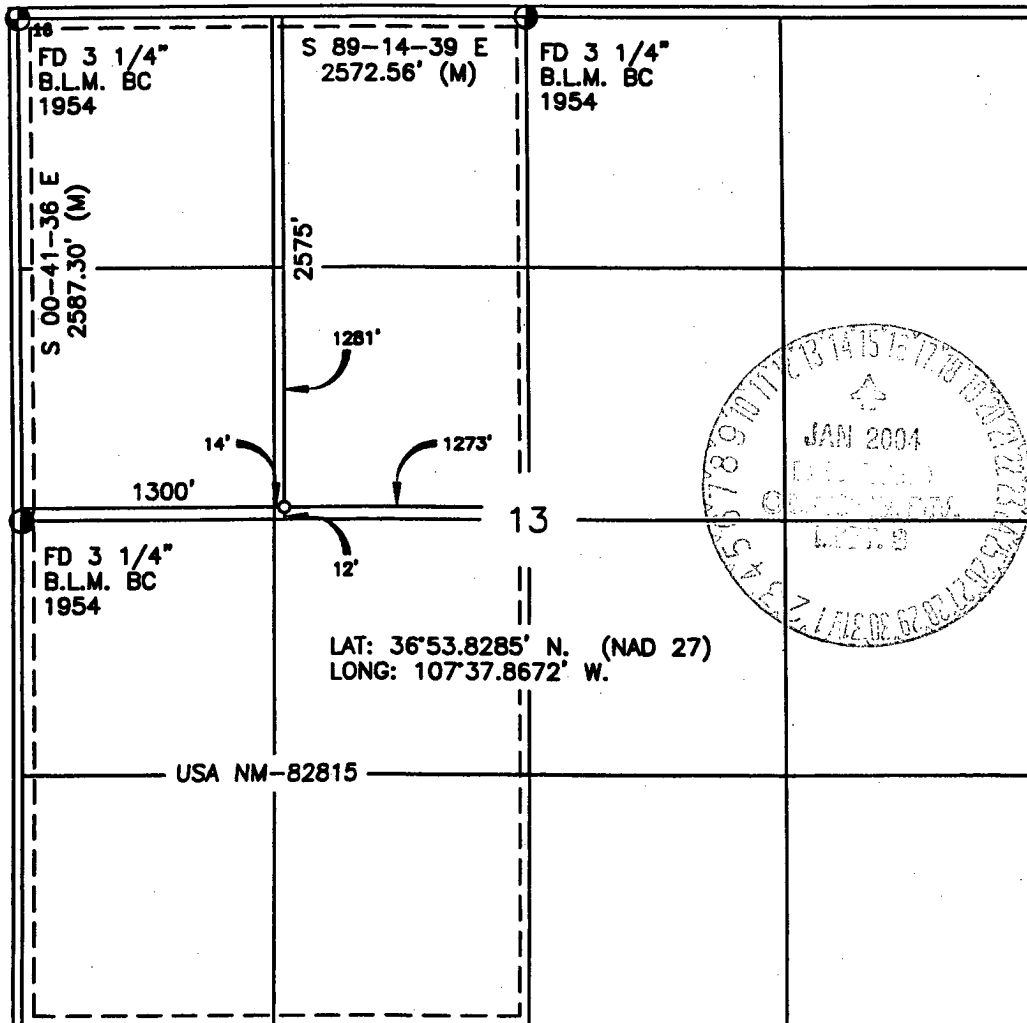
<sup>10</sup> Surface Location

UL or lot no.	Section	Township	Range	Lot Idn	Feet from the	North/South line	Feet from the	East/West line	County
F	13	31-N	8-W		2575'	NORTH	1300'	WEST	SAN JUAN

<sup>11</sup> Bottom Hole Location If Different From Surface

UL or lot no.	Section	Township	Range	Lot Idn	Feet from the	North/South line	Feet from the	East/West line	County
*Dedicated Acres W/320					*Joint or Infill		*Consolidation Code		*Order No.

NO ALLOWABLE WILL BE ASSIGNED TO THIS COMPLETION UNTIL ALL INTERESTS HAVE BEEN CONSOLIDATED  
OR A NON-STANDARD UNIT HAS BEEN APPROVED BY THE DIVISION



17 OPERATOR CERTIFICATION

I hereby certify that the information contained herein is true and complete to the best of my knowledge and belief.

Frances Bond  
Signature  
Frances Bond  
Printed Name  
Regulatory Assistant  
Title  
10-22-03  
Date

18 SURVEYOR CERTIFICATION

I hereby certify that the well location shown on this plat was plotted from field notes of actual surveys made by me or under my supervision, and that the same is true and correct to the best of my belief.

Sept 18, 2002  
Date of Survey  
DAVID A. JOHNSON  
Signature and Seal of Professional Surveyor  
REGISTERED PROFESSIONAL SURVEYOR  
14827  
Certificate Number

## OPERATIONS PLAN

**Well Name:** Lewis Park 101S  
**Location:** 2575'' FNL, 1300' FWL Section 13, T-31-N, R-8-W  
Latitude 36° 53.8285'N, Longitude 107° 37.8672'W  
San Juan County, NM  
**Formation:** Basin Fruitland Coal  
**Elevation:** 6619'GR

Formation:	Top	Bottom	Contents
Surface	San Jose	2366'	
Ojo Alamo	2366'	2466'	aquifer
Kirtland	2466'	3201'	
Fruitland	3201'	3236'	
<b>Intermediate TD</b>	<b>3216'</b>		
Fruitland Coal	3236'	3516'	gas
B/Basal Coal	3516'	3521'	gas
Pictured Cliffs	3521'		
<b>Total Depth</b>	<b>3601'</b>		

**Logging Program:** GR/RHOB from TD to 3216'

**Mudlog:** from 7" to 3601

**Coring Program:** none

**Mud Program:**

Interval	Type	Weight	Vis.	Fluid Loss
0- 120'	Spud Mud/Air/Air Mist	8.4-9.0	40-50	no control
120-3216'	Non-dispersed	8.4-9.0	30-60	no control
3216-3601'	Air/Mist			

**Casing Program (as listed, the equivalent, or better):**

Hole Size	Depth Interval	Csg.Size	Wt.	Grade
12 1/4"	0' - 120'	9 5/8"	32.3#	H-40
8 3/4"	0' - 3216'	7"	20.0#	J-55
6 1/4"	3216' - 3601'	open hole		

**Alternate Casing Program (as listed, the equivalent, or better):**

Hole Size	Depth Interval	Csg.Size	Wt.	Grade
12 1/4"	0' - 120'	9 5/8"	32.3#	H-40
8 3/4"	0' - 3216'	7"	20.0#	J-55
6 1/4"	3176' - 3601'	5 1/2"	15.5#	J-55

**Tubing Program:**

0' - 3601'	2 3/8"	4.7#	J-55
------------	--------	------	------

**Float Equipment:** 9 5/8" surface casing - saw tooth guide shoe. Centralizers will be run in accordance with Onshore Order #2.

7" intermediate casing - guide shoe and self-fill float collar. Standard centralizers run every other joint above shoe. Two turbolizing type centralizers - one below and one into the base of the Ojo Alamo @ 2466'. Standard centralizers thereafter every fourth joint up to the base of the surface pipe.

**Wellhead Equipment:** 9 5/8" x 7" x 2 3/8" x 11" 2000 psi xmas tree assembly.

**Cementing:****9 5/8" surface casing -**

Pre-Set Drilled Cement with 23 sx Type I, II cement with 20% flyash mixed at 14.5 ppg, 1.61 cu ft per sack yield. (37 cu ft of slurry, bring cement to surface) Wait on cement for 24 hours for pre-set holes before pressure testing or drilling out from under surface.

**Conventionally Drilled**

Cement with 80 sx Type III cement with 0.25 pps Celloflake, 2% CaCl. (113 cu ft of slurry, 200% excess, bring cement to surface) Wait on cement for 8 hrs for conventionally set holes before pressure testing or drilling out from under surface.

~~Waive the 6 hours WOC in lieu of 4 hours prior to NU of BOPE.~~ See BLM General Requirements

7" intermediate casing - lead w/282 sacks Premium Lite with 3% calcium chloride, 5 pps LCM-1, and 1/4#/sack flocele, 0.4% FL-52, & 0.4% SMS. Tail with 90 sacks Type III cmt with 1% calcium chloride, 1/4#/sack flocele and 0.2% FL-52 (725 cu.ft., 50% excess to circulate to surface).

5 1/2" liner - will not be cemented if run.

Note: If open hole logs are run, cement volumes will be based on 25% excess over caliper volumes.

**BOP and tests:**

Surface to intermediate TD - 11" 2000 psi (minimum) double gate BOP stack (Reference Figure #1). Prior to drilling out surface casing, test rams to 600#/30 min.

Intermediate TD to Total Depth - 7 1/6" 2000 psi (minimum) double gate BOP stack (Reference Figure #2). Prior to drilling out intermediate casing, test blind rams and casing to 1500 psi for 30 minutes; all pipe rams and casing to 1500 psi for 30 minutes each.

From surface to TD - choke manifold (Reference Figure #3).

Pipe rams will be actuated at least once each day and blind rams actuated once each trip to test proper functioning. An upper kelly cock valve with handle and drill string safety valves to fit each drill string will be maintained and available on the rig floor.

**Additional information:**

- \* The Fruitland Coal formation will be completed.
- \* Anticipated pore pressure for the Fruitland is less than 500 psi.
- \* This gas is dedicated.
- \* The west half of Section 13 is dedicated to the Fruitland Coal.

Date: 12-15-03

Drilling Engineer: Jim McCarthy