

UNITED STATES
DEPARTMENT OF THE INTERIOR
BUREAU OF LAND MANAGEMENT

SUBMIT IN
DUPLICATE

(See other instructions on
reverse side)

FORM APPROVED
OMB NO 1004-0137
Expires: February 28, 1995

WELL COMPLETION OR RECOMPLETION REPORT AND LOG*

1a TYPE OF WELL: ☐ OIL WELL ☒ GAS WELL ☐ DRY ☐ OTHER

b TYPE OF COMPLETION
NEW WELL WORKOVER DEEPEN ☒ PLUG BACK DIFF RESVR OTHER

2 NAME OF OPERATOR
WILLIAMS PRODUCTION COMPANY

3 ADDRESS AND TELEPHONE NO

P.O. Box 640, Aztec, NM 87410 (505) 634-4208

4 LOCATION OF WELL (Report location clearly and in accordance with any State requirements)*

At Surface: 1715' FNL & 770' FEL, Sec 20 (H), T28N, R3W

At top production interval reported below: Same

At total depth: Same

5 LEASE DESIGNATION AND LEASE NO
701-06-0016

6 IF INDIAN, ALLOTTEE OR
JAECO

7 UNIT AGREEMENT NAME

8 FARM OR LEASE NAME, WELL NO.
JAECO-WPX 28-3 20 #011

9 API WELL NO
30-039-30596 -00X1

10 FIELD AND POOL, OR WILDCAT
BLANCO MV/BASIN MC/BASIN DK

11 SEC, T, R, M, OR BLOCK AND
SURVEY OR AREA
Sec 20, T28N, R3W

12 COUNTY OR 13 STATE
Rio Arriba New Mexico

15. DATE SPUNDED 3/20/10
16. DATE TD REACHED 4/9/10
17. DATE COMPLETED (READY TO PRODUCE)

14 PERMIT NO
DATE ISSUED
7237' GR

19 ELEVATION CASINGHEAD
RCVD MAY 26 '10

20 TOTAL DEPTH, MD & TVD
8720' MD
21 PLUG, BACK TD, MD & TVD
8309' MD

22 IF MULTICOMP, HOW MANY
2
23 INTERVALS DRILLED BY

ROTARY TOOLS
x OIL CONS. DIV.

24. PRODUCING INTERVAL(S), OF THIS COMPLETION - TOP, BOTTOM, NAME (MD AND TVD)*
Basin DK - Too wet to produce - 41' of cement on top of CIBP set at 8350'

25 WAS DIRECTIONAL SURVEY MADE
NO DIST 3

26 TYPE ELECTRIC AND OTHER LOGS RUN

Array Induction, Compensated GR-Density-Neutron

27 WAS WELL CORED
NO

28 CASING REPORT (Report all strings set in well)

CASING SIZE/GRADE	WEIGHT, LB /FT	DEPTH SET (MD)	HOLE SIZE	TOP OF CEMENT, CEMENTING RECORD	AMOUNT PULLED
10-3/4", J-55	40.5#	312'	14-3/4"	200 SX - SURFACE	
7-5/8", K-55	26.4#	4462'	9-7/8"	735 SX SURFACE	
4.5", N-80	11.6#	8717'	6-3/4"	600 SX - 4340' TOC	

29 LINER RECORD

SIZE	TOP (MD)	BOTTOM (MD)	SACKS CEMENT*	SCREEN (MD)	SIZE	DEPTH SET (MD)	PACKER SET (MD)

31. PERFORATION RECORD (Interval, size, and number)

Lower DK: 30, 0 34" holes

32 ACID, SHOT, FRACTURE, CEMENT SQUEEZE, ETC

DEPTH INTERVAL (MD) AMOUNT AND KIND OF MATERIAL USED

8436' - 8468'

These holes not fraced

ACCEPTED FOR RECORD

MAY 21 2010

FARMINGTON FIELD OFFICE
BY SCV

33 PRODUCTION

DATE OF FIRST PRODUCTION		PRODUCTION METHOD (Flowing, gas lift, pumping-size and type of pump)				WELL STATUS (PRODUCING OR SI)	
NA						P&A'd	
DATE OF TEST	TESTED	CHOKE SIZE	PROD'N FOR TEST PERIOD	OIL - BBL	GAS - MCF	WATER - BBL	GAS-OIL RATIO
FLOW TBG PRESS	CASING PRESSURE	CALCULATED 24-HOUR RATE		OIL - BBL	GAS - MCF	WATER - BBL	OIL GRAVITY-API (CORR)

34 DISPOSITION OF GAS (Sold, used for fuel, vented, etc) TO BE SOLD

TEST WITNESSED BY Weldon Huggins

35 LIST OF ATTACHMENTS SUMMARY OF POROUS ZONES, WELLBORE DIAGRAM

36. I hereby certify that the foregoing and attached information is complete and correct as determined from all available records

SIGNED

TITLE Regulatory Specialist

DATE 5/19/10

NMOCB

37 SUMMARY OF POROUS ZONES (Show all important zones of porosity and contents thereof, cored intervals, and all drill-stem, tests, including depth interval tested, cushion used, time tool open, flowing and shut-in pressures, and recoveries)					38.GEOLOGIC MARKERS			
FORMATION	TOP	BOTTOM	DESCRIPTION, CONTENTS, ETC		NAME	TOP		
						NAME	MEASURED DEPTH	TRUE VERTICAL DEPTH
						CLIFFHOUSE	5882'	
						POINT LOOKOUT	6210'	
						MANCOS	6611'	
						GRENEROS	8253'	
						DAKOTA	8406'	

JAECO-WPX 28-3 20 #011
Blanco MV, Basin DK, Basin MC

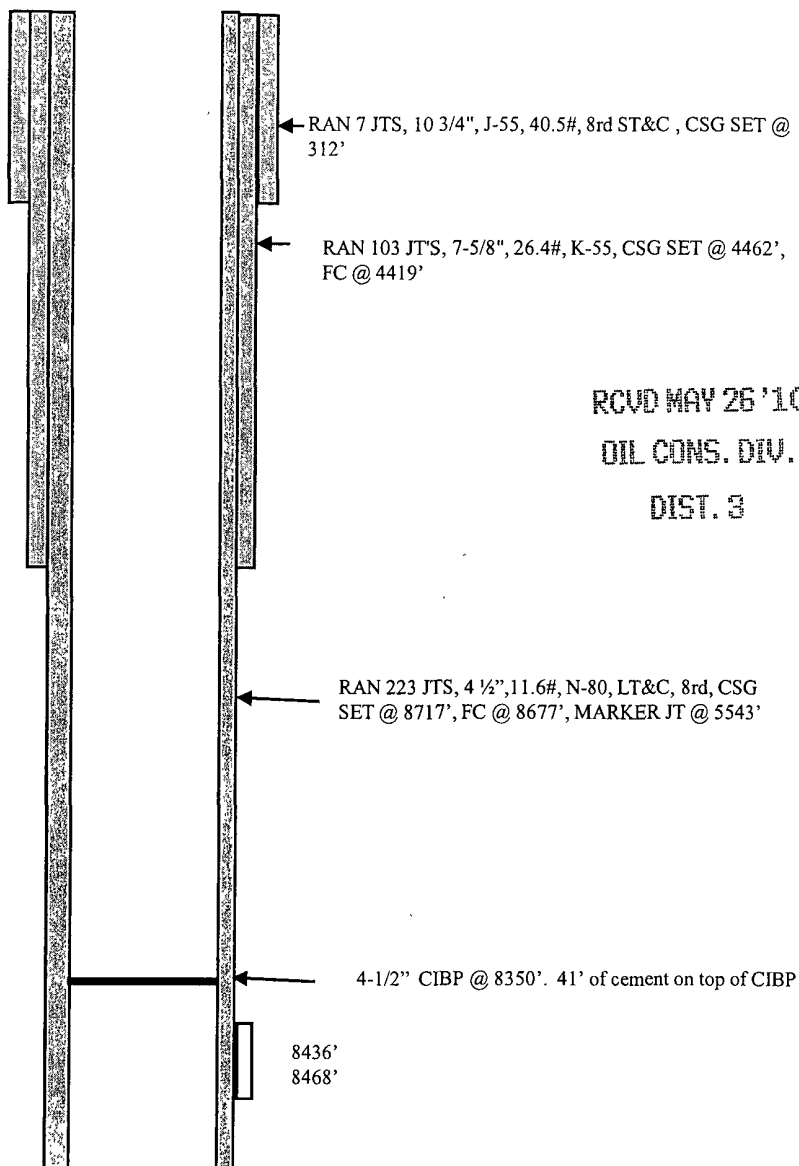
Spud Date: 3/20/2010

Location:
 1715' FNL & 770' FEL
 Section 20(H), T28N, R3W
 Rio Arriba, NM

Elevation: 7237' GR
API #: 30-039-30596

<u>Tops</u>	<u>Depth</u>
Cliff House	5882'
Point Lookout	6210'
Mancos	6611'
Graneros	8253'
Dakota	8406'

RCVD MAY 26 '10
OIL CONS. DIV.
DIST. 3



Lower DK 8436' - 8468' (30, 0.34" holes)
 Holes not fraced

TD @ 8720'
 PBTd @ 8309'

HOLE SIZE	CASING	CEMENT	CU. FT.	CMT TOP
14-3/4"	10 3/4", 40.5#	200 sxs	360 cu.ft.	surface
9 7/8"	7 5/8", 26.4#	735 sxs	1852 cu.ft.	surface
6 3/4"	4-1/2", 11.6#	600 sxs	840 cu.ft.	4340' (CBL)