

District I
1625 N. French Dr., Hobbs, NM 88240
District II
1301 W. Grand Avenue, Artesia, NM 88210
District III
1000 Rio Brazos Road, Aztec, NM 87410
District IV
1220 S. St. Francis Dr., Santa Fe, NM 87505

State of New Mexico
Energy Minerals and Natural Resources

Form C-101
June 16, 2008

Oil Conservation Division
1220 South St. Francis Dr.
Santa Fe, NM 87505

Submit to appropriate District Office

☐ AMENDED REPORT

APPLICATION FOR PERMIT TO DRILL, RE-ENTER, DEEPEN, PLUGBACK, OR ADD A ZONE

¹ Operator Name and Address Williams Production Company, L.L.C. P.O. Box 640 Aztec, NM 87410		² OGRID Number 120782
³ Property Code 17033-17212	⁴ Property Name Rosa Unit COM	⁵ API Number 30-039-309774
⁹ Proposed Pool 1 Basin Fruitland Coal		¹⁰ Proposed Pool 2

7 Surface Location

UL or lot no.	Section	Township	Range	Lot Idn	Feet from the	North/South line	Feet from the	East/West line	County
E	25	31N	5W		2275	North	135	West	Rio Arriba

8 Proposed Bottom Hole Location If Different From Surface

UL or lot no	Section	Township	Range	Lot Idn	Feet from the	North/South line	Feet from the	East/West line	County
H	26	31N	5W		1650	North	990	East	Rio Arriba

Additional Well Information

¹¹ Work Type Code N	¹² Well Type Code G	¹³ Cable/Rotary R	¹⁴ Lease Type Code P	¹⁵ Ground Level Elevation 6432'
¹⁶ Multiple No	¹⁷ Proposed Depth 3728'	¹⁸ Formation Basin Fruitland Coal	¹⁹ Contractor	²⁰ Spud Date August 2010

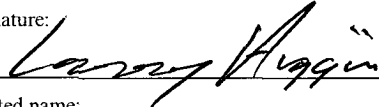
21 Proposed Casing and Cement Program

Hole Size	Casing Size	Casing weight/foot	Setting Depth	Sacks of Cement	Estimated TOC
12.250"	9.625"	36#	300'	160	surface
8.750"	7"	20#	3513'	490	surface
6.250"	5.5"	15.5#	3413'-3628'	none	

²² Describe the proposed program. If this application is to DEEPEN or PLUG BACK, give the data on the present productive zone and proposed new productive zone. Describe the blowout prevention program, if any. Use additional sheets if necessary.
A 2M (double ram) blowout preventer will be installed & pressure tested to 1500 psi. A 2" kill line & 2" line to a choke manifold will also be installed. This will be a cavitated completion in the Basin Fruitland Coal

RCVD JUN 8 '10
OIL CONS. DIV.

²³ I hereby certify that the information given above is true and complete to the best of my knowledge and belief

Signature: 

Printed name:
Larry Higgins

Title:
Permit Supervisor

E-mail Address
Larry.higgins@williams.com

Date: **Jun. 7, 2010**

Phone: **505 634 4208**

OIL CONSERVATION DIVISION

DIST. 3

Approved by: 

Title
**Deputy Oil & Gas Inspector,
District #3**

Approval Date:
JUN 11 2010

Expiration Date:
12-11-2011

Conditions of Approval Attached ☐

Hold C104

JUN 11 2010

**NOTIFY AZTEC OGD 24 HRS.
PRIOR TO CASING & CEMENT**

for Directional Survey
and "As Drilled" plat

District I
1625 N. French Dr., Hobbs, NM 88240

District II
1301 W Grand Avenue, Artesia, NM 88210

District III
1000 Rio Brazos Rd., Aztec, NM 87410

District IV
1220 S St. Francis Dr., Santa Fe, NM 87505

State of New Mexico
Energy, Minerals & Natural Resources Department

OIL CONSERVATION DIVISION
1220 South St. Francis Dr.
Santa Fe, NM 87505

Form C-102
Revised October 12, 2005
Instructions on back
Submit to Appropriate District Office
State Lease - 4 Copies
Fee Lease - 3 Copies

☐ AMENDED REPORT

WELL LOCATION AND ACREAGE DEDICATION PLAT

*API Number 30.039.30974		*Pool Code 71629	*Pool Name BASIN FRUITLAND COAL
*Property Code -47033 17212	*Property Name ROSA UNIT COM		*Well Number 377
*GRID No. 120782	*Operator Name WILLIAMS PRODUCTION COMPANY		*Elevation 6432'

¹⁰ Surface Location

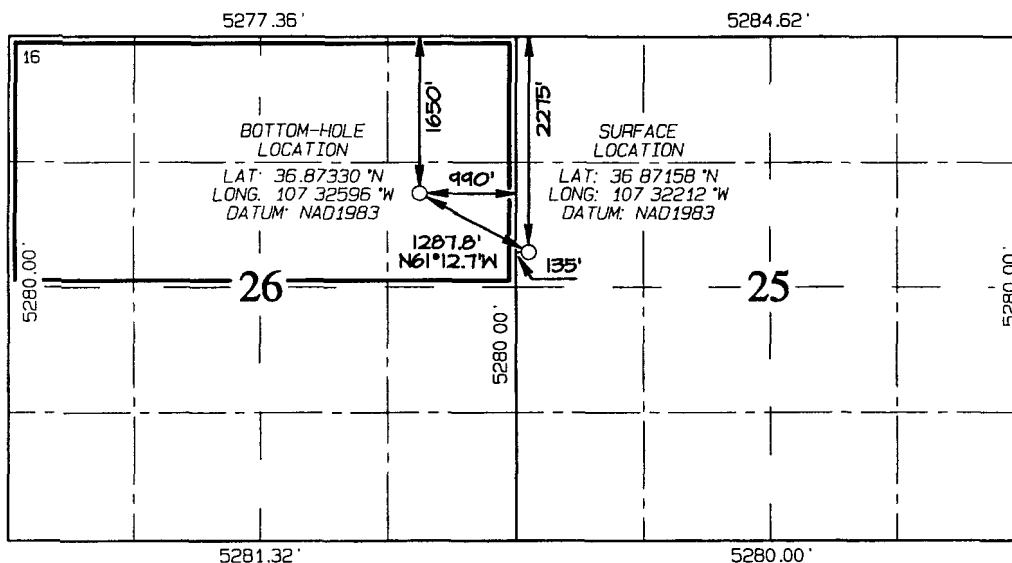
UL or lot no	Section	Township	Range	Lot Idn	Feet from the	North/South line	Feet from the	East/West line	County
E	25	31N	5W		2275	NORTH	135	WEST	RIO ARriba

¹¹ Bottom Hole Location If Different From Surface

UL or lot no.	Section	Township	Range	Lot Idn	Feet from the	North/South line	Feet from the	East/West line	County
H	26	31N	5W		1650	NORTH	990	EAST	RIO ARriba

¹² Dedicated Acres 320.0 Acres - N/2	¹³ Joint or Infill	¹⁴ Consolidation Code	¹⁵ Order No.
---	-------------------------------	----------------------------------	-------------------------

NO ALLOWABLE WILL BE ASSIGNED TO THIS COMPLETION UNTIL ALL INTERESTS HAVE BEEN CONSOLIDATED OR A NON-STANDARD UNIT HAS BEEN APPROVED BY THE DIVISION



¹⁷ OPERATOR CERTIFICATION

I hereby certify that the information contained herein is true and complete to the best of my knowledge and belief, and that this organization either owns a working interest or unleased mineral interest in the land including the proposed bottom-hole location or has a right to drill this well at this location pursuant to a contract with an owner of such a mineral or working interest, or to a voluntary pooling agreement or a compulsory pooling order heretofore entered by the division

Larry Higgins 6-7-10
Signature Date
LARRY HIGGINS
Printed Name

¹⁸ SURVEYOR CERTIFICATION

I hereby certify that the well location shown on this plat was plotted from field notes of actual surveys made by me or under my supervision, and that the same is true and correct to the best of my belief

Survey Date: SEPTEMBER 7, 2006

Signature and Seal of Professional Surveyor



JASON C. EDWARDS
Certificate Number 15269