

RECEIVED

Form 3160-3
(April 2004)

MAY 04 2010

FORM APPROVED
OMB No. 1004-0137
Expires March 31, 2007

UNITED STATES
DEPARTMENT OF THE INTERIOR
BUREAU OF LAND MANAGEMENT

APPLICATION FOR PERMIT TO DRILL OR REENTER

1a. Type of work: <input checked="" type="checkbox"/> DRILL <input type="checkbox"/> REENTER		5. Lease Serial No. NM-45207
1b. Type of Well: <input type="checkbox"/> Oil Well <input checked="" type="checkbox"/> Gas Well <input type="checkbox"/> Other <input checked="" type="checkbox"/> Single Zone <input type="checkbox"/> Multiple Zone		6. If Indian, Allottee or Tribe Name
2. Name of Operator Dugan Production Corp.		7. If Unit or CA Agreement, Name and No.
3a. Address 709 East Murray Drive Farmington, NM 87401		8. Lease Name and Well No. Sixteen G'S #91S
3b. Phone No. (include area code) 505-325-1821		9. API Well No. 30-045-35745
4. Location of Well (Report location clearly and in accordance with any State requirements.) At surface 1165' FSL & 1380' FSL Lat. 36.32446 N At proposed prod. zone Same as above Long. 107.82612 W		10. Field and Pool, or Exploratory Basin Fruitland Coal
11. Sec., T. R. M. or Blk. and Survey or Area Sec. 7, T24N, R9W NMPM		12. County or Parish San Juan
13. State NM		14. Distance in miles and direction from nearest town or post office* Approx. 35-miles SE of Farmington, New Mexico
15. Distance from proposed* location to nearest property or lease line, ft. (Also to nearest drig. unit line, if any)	16. No. of acres in lease 1165-Feet 160.0 Acres	17. Spacing Unit dedicated to this well 320.32 Acres - (S/2)
18. Distance from proposed location* to nearest well, drilling, completed, applied for, on this lease, ft.	19. Proposed Depth Approx. 1000' 1920-Feet	20. BLM/BIA Bond No. On File
21. Elevations (Show whether DF, KDB, RT, GL, etc.) GL-6881'	22. Approximate date work will start* ASAP	23. Estimated duration 5-Days

24. Attachments

The following, completed in accordance with the requirements of Onshore Oil and Gas Order No.1, shall be attached to this form:

1. Well plat certified by a registered surveyor.
2. A Drilling Plan.
3. A Surface Use Plan (if the location is on National Forest System Lands, the SUPO shall be filed with the appropriate Forest Service Office).
4. Bond to cover the operations unless covered by an existing bond on file (see Item 20 above).
5. Operator certification
6. Such other site specific information and/or plans as may be required by the authorized officer.

25. Signature <i>Kurt Fagrelus</i>	Name (Printed/Typed) Kurt Fagrelus	Date 1/6/2010
Title Geologist		
Approved by (Signature) <i>[Signature]</i>	Name (Printed/Typed) AFM	Date 7/28/2010
Title AFM	Office FFO	

Application approval does not warrant or certify that the applicant holds legal or equitable title to those rights in the subject lease which would entitle the applicant to conduct operations thereon.
Conditions of approval, if any, are attached.

Title 18 U.S.C. Section 1001 and Title 43 U.S.C. Section 1212, make it a crime for any person knowingly and willfully to make to any department or agency of the United States any false, fictitious or fraudulent statements or representations as to any matter within its jurisdiction.

*(Instructions on page 2)

NOTIFY AZTEC OCD 24 HRS.
PRIOR TO CASING & CEMENT

A water based gel-mud will be used to drill surface and production casing hole. Standard 2,000 psi BOP will be used to drill production hole. The Fruitland Coal will be completed from approximately 1755 - 1770'. The interval will be fracture stimulated.

This action is subject to technical and procedural review pursuant to 43 CFR 3165.9 and appeal pursuant to 43 CFR 3165.4

JUL 28 2010

NMOCD

DRILLING OPERATIONS AUTHORIZED ARE SUBJECT TO COMPLIANCE WITH ATTACHED "GENERAL REQUIREMENTS".

BLM'S APPROVAL OR ACCEPTANCE OF THIS ACTION DOES NOT RELIEVE THE LESSEE AND OPERATOR FROM OBTAINING ANY OTHER AUTHORIZATION REQUIRED FOR OPERATIONS ON FEDERAL AND INDIAN LANDS

REC'D JUL 22 '10
BUREAU OF LAND MANAGEMENT
U.S. DEPARTMENT OF THE INTERIOR

District I
1625 N. French Dr., Hobbs, NM 88240
District II
1301 W. Grand Avenue, Artesia, NM 88210
District III
1000 Rio Brazos Rd., Aztec, NM 87410
District IV
1220 S. St. Francis Dr., Santa Fe, NM 87505

State of New Mexico
Energy, Minerals & Natural Resources Department
OIL CONSERVATION DIVISION
1220 South St. Francis Dr. MAY 04 2010
Santa Fe, NM 87505

Form C-102
Revised October 12, 2005
Instructions on back
Submit to Appropriate District Office
State Lease - 4 Copies
Fee Lease - 3 Copies

AMENDED REPORT
Farrington Field Office

WELL LOCATION AND ACREAGE DEDICATION PLAT

*API Number 30-048-35145	*Pool Code 71629	*Pool Name BASIN FRUITLAND COAL
*Property Code 38249	*Property Name SIXTEEN G'S Com	*Well Number 91S
*GRID No. 006515	*Operator Name DUGAN PRODUCTION CORPORATION	*Elevation 6881'

¹⁰ Surface Location

UL or lot no.	Section	Township	Range	Lot Idn	Feet from the	North/South line	Feet from the	East/West line	County
0	7	24N	9W		1165	SOUTH	1380	EAST	SAN JUAN

¹¹ Bottom Hole Location If Different From Surface

UL or lot no.	Section	Township	Range	Lot Idn	Feet from the	North/South line	Feet from the	East/West line	County

¹² Dedicated Acres 320.32 Acres - (S/2)	¹³ Joint or Infill	¹⁴ Consolidation Code	¹⁵ Order No.
---	-------------------------------	----------------------------------	-------------------------

NO ALLOWABLE WILL BE ASSIGNED TO THIS COMPLETION UNTIL ALL INTERESTS HAVE BEEN CONSOLIDATED OR A NON-STANDARD UNIT HAS BEEN APPROVED BY THE DIVISION

¹⁶ 1332.54'	1318.68'	2638.02'	¹⁷ OPERATOR CERTIFICATION I hereby certify that the information contained herein is true and complete to the best of my knowledge and belief, and that this organization either owns a working interest or unleased mineral interest in the land including the proposed bottom-hole location or has a right to drill this well at this location pursuant to a contract with an owner of such a mineral or working interest, or to a voluntary pooling agreement or a compulsory pooling order heretofore entered by the division. <i>Kurt Fagrelis</i> 7-25-2009 Signature Date Kurt Fagrelis Printed Name
LOT 1			
LOT 2			
LOT 3	Dugan NM-25433	Dugan NM-45207	
5284.62'			¹⁸ SURVEYOR CERTIFICATION I hereby certify that the well location shown on this plat was plotted from field notes of actual surveys made by me or under my supervision, and that the same is true and correct to the best of my belief Date of Survey: JUNE 25, 2009 Signature and Seal of Professional Surveyor
			 JASON C. EDWARDS Certificate Number 15269
LOT 4			
1319.34'	1316.04'	2632.74'	

UNITED STATES
DEPARTMENT OF THE INTERIOR
BUREAU OF LAND MANAGEMENT

JUN 18 2010

FORM APPROVED
Budget Bureau No 1004-0135
Expires March 31, 1993

SUNDRY NOTICES AND REPORTS ON WELLS

Do not use this form for proposals to drill or to deepen or reentry to a different reservoir
Use "APPLICATION FOR PERMIT -" for such proposals

SUBMIT IN TRIPLICATE

1 Type of Well

☐

Oil
Well

☒

Gas
Well

☐

Other

2 Name of Operator

Dugan Production Corp.

3 Address and Telephone No

P.O. Box 420, Farmington, NM 87499 (505) 325 - 1821

Location of Well (Footage, Sec., T., R., M., or Survey Description)

1165' FSL & 1380' FEL

Sec. 7, T24N, R9W

NMPM

5 Lease Designation and Serial No
NM-45207

6 If Indian, Allotted or Tribe Name

7 If Unit or CA, Agreement Designation

8 Well Name and No

Sixteen G's Com #91S

9 API Well No

30-045-35145

10 Field and Pool, or Exploratory Area

Basin Fruitland Coal

11 County or Parish, State

San Juan Co., NM

12. CHECK APPROPRIATE BOX(s) TO INDICATE NATURE OF NOTICE, REPORT, OR OTHER DATA

TYPE OF SUBMISSION

☒

Notice of Intent

☐

Subsequent Report

☐

Final Abandonment Notice

TYPE OF ACTION

☐

Abandonment

☐

Recompletion

☐

Plugging Back

☐

Casing Repair

☒

Altering Casing

☒

Other Alter hole size
and casing.

☐

Change of Plans

☐

New Construction

☐

Non-Routine Fracturing

☐

Water Shut-Off

☐

Conversion to Injection

☐

Dispose Water

(Note: Report results of multiple completion on Well
Completion or Recompletion Report and Log form.)

13 Describe Proposed or Completed Operations (Clearly state all pertinent details, and give pertinent dates, including estimated date of starting any proposed work. If well is directionally drilled, give subsurface locations and measured and true vertical depths for all markers and zones pertinent to this work.)

Plan to change hole size and casing size as follows:

Hole Size

Casing

Casing Size and Weight

11"

Surface

7", 20# set at 120-ft.

6-1/4"

Production

4-1/2", 10.5# set at 1920-ft.

Cement type and volumes will remain same as reported on original APD.

RCVD JUL 22 '10

OIL CONS. DIV.
DIST. 3

14 I hereby certify that the foregoing is true and correct

Signed

Kurt Fegrelin

Title

VP Exploration

Date

June 18, 2010

(This space for Federal or State office use)

Approved by

AFM

Title

AFM

Date

7/20/2010

Conditions of approval, if any

Title 18 U.S.C. Section 1001, makes it a crime for any person knowingly and willfully to make to any department or agency of the United States any false, fictitious or fraudulent statements or representations as to any matter within its jurisdiction

*See Instruction on Reverse Side

NMOCD

NOTIFY AZTEC OCD 24 HRS
PRIOR TO CASING & CEMENT

EXHIBIT B
OPERATIONS PLAN
Sixteen G'S #91-S

APPROXIMATE FORMATION TOPS:

Ojo Alamo	985'
Kirtland	1110'
Fruitland	1450'
Pictured Cliffs	1770'
Total Depth	1920'

Catch samples every 10 feet from 1650 feet to total depth.

LOGGING PROGRAM:

Run cased hole GR-CCL-CNL from total depth to surface.

CASING PROGRAM:

Hole Size	Casing Size	Wt./ft.	Setting Depth	Grade and Condition
12-1/4"	8-5/8" 7"	20#	120'	J-55
7-7/8"	5-1/2" 4 1/2"	15.5#	1920'	J-55

Plan to drill a 12-1/4" hole and set 120' of 8-5/8" OD, 24#, J-55 surface casing. Then plan to drill a 7-7/8" hole to total depth with gel-water mud program to test the Fruitland Coal. 5-1/2", 15.5#, J-55 production casing will be run and cemented. Cased hole GR-CCL-CNL log will be run. Productive zone will be perforated and fractured. After frac, the well will be cleaned out and production equipment will be installed.

CEMENTING PROGRAM:

Surface: Cement to surface with 75-cf Class B + 2% CaCl₂.
Circulate to surface.

Production Stage- Cement w/160-sx Premium Lite FM 3% BWOC
Calcium Chloride + 0.25 lbs/sx Celloflake + 5 lbs/sk
LCM-1 + 0.4% BWOC FL-52 + 8% BWOC Bentonite + 0.4%
BWOC Sodium Metasilicate + 112.3% fresh water (12.1
lb/gal, 2.13 cu ft/sx - 341-cu ft slurry). Tail
w/163-sx Type III cement + 1 lb/sk Calcium Chloride +
0.25 lb/sx Celloflake + 0.2% BWOC FL-52 + 59% fresh
water (14.6 lb/gal, 1.38 cu ft/sx-225-cu ft slurry).

Total cement slurry for production stage is 566-cf
Circulate cement to surface.

An adequate spacer will be pumped ahead of the cement slurry to help prevent mud contamination of the cement. An adequate number of casing centralizers will be run through useable water zones to ensure that casing is centralized through these zones. The adequate number of centralizers will be determined based on API standards. Centralizers to impart a swirling action around the casing will be used just below and into the base of the lowest usable water zone. These devices will assist mud displacement, increase cement bonding potential and create an effective hydraulic seal. A chronological log will be kept which records the pump rate, pressure, slurry density, and slurry volume for the cement job. The log will be sent to the BLM after completion of the job.

Maximum Anticipated Bottom Hole Pressure - 300 psi.

Drilling Fluid - will be fresh water with bentonite 8.9#/gal.

WELLHEAD EQUIPMENT:

Huber 8-5/8"x5-1/2" casing head, 1000# WP, tested to 2000#.
Huber 5-1/2"x2-7/8" tubing head, 1000# WP, tested to 2000#.

Blow-Out Preventer Equipment (BOPE): Exhibit D.

Annular preventer, double ram, or 2 rams with one being blind and one being a pipe ram.
Kill line (2" minimum)
1 kill line valve (2" minimum)
1 choke line valve
2 adjustable chokes
Upper kelly cock valve with handle available.
Safety valve and subs to fit all drill string connections in use.
Pressure gauge on choke manifold.
2" minimum choke line.
Fill-up line.

Working pressure for all BOPE will be 2,000 psi or greater.

Will test BOPE (blind rams, pipe rams, choke manifold and surface casing) separately. Each test will include a low pressure test to 250-psig held for five minutes and a high pressure test to 800-psig held for thirty minutes (with no more than a 10-percent pressure drop during the duration of the tests). If a 10-percent or greater pressure drop occurs; a packer will be run to isolate the surface casing and BOPE to locate the source of the leak.

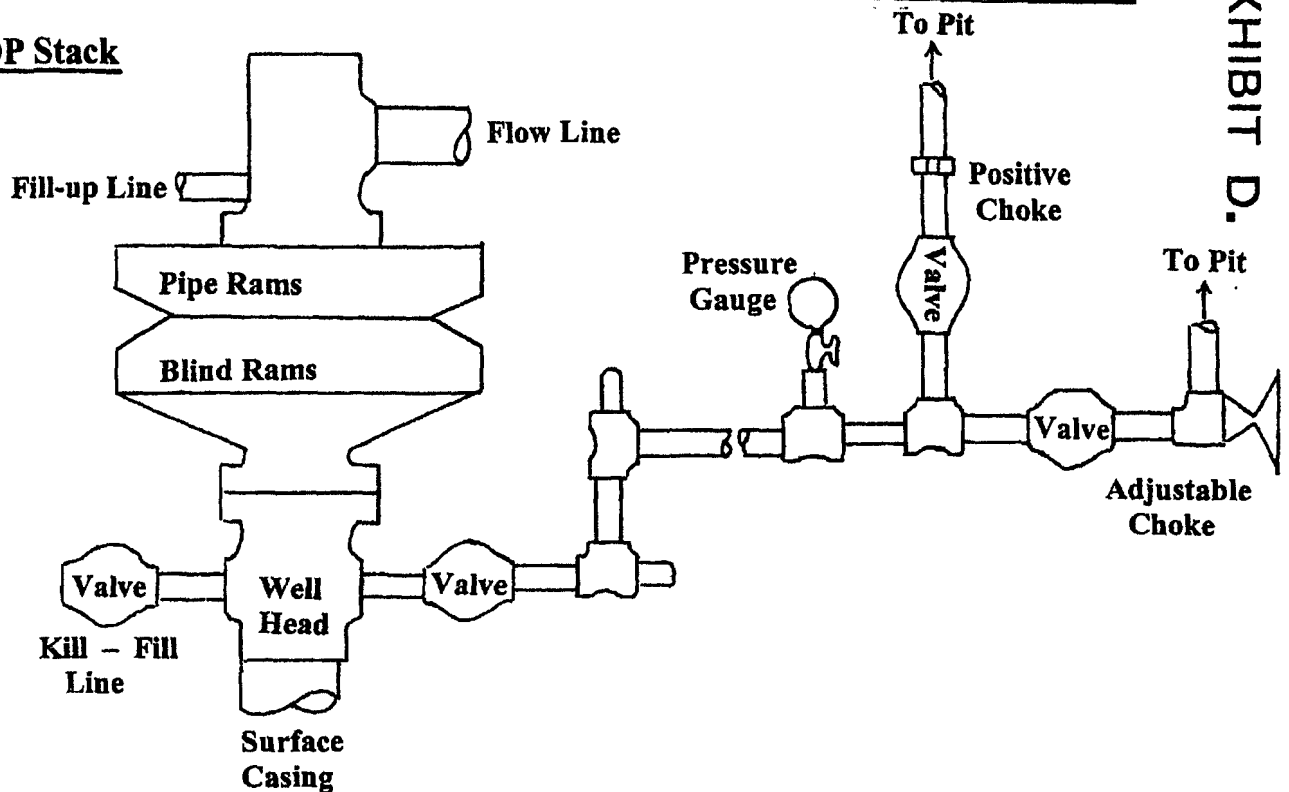
Contacts: Dugan Prod.Corp. Office & Radio Dispatch: 325-1821

<u>Mark Brown</u>	<u>Kurt Fagrelus</u>	<u>John Alexander</u>
327-3632 (H)	325-4327 (H)	325-6927 (H)
320-8247 (M)	320-8248 (M)	320-1935 (M)

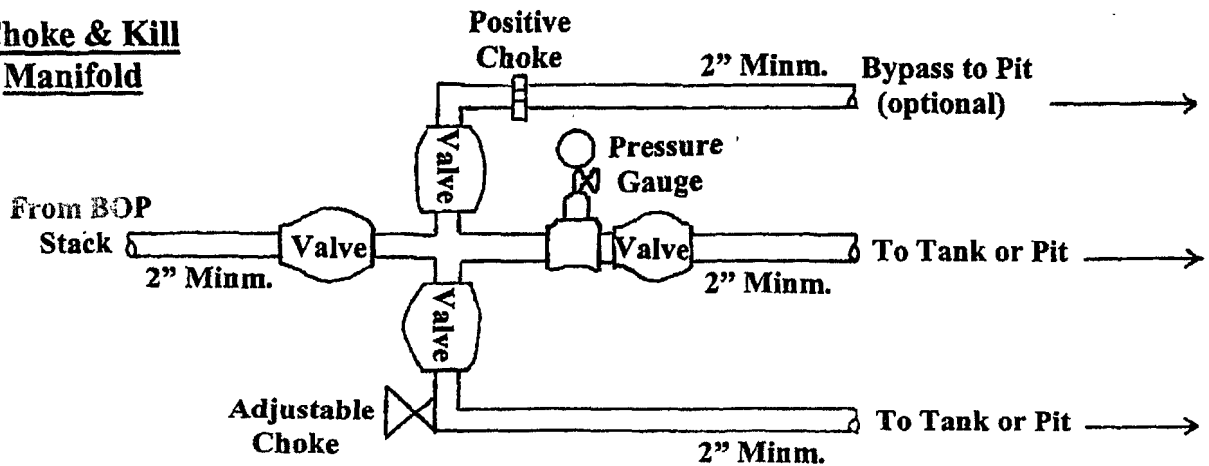
Well Control Equipment Schematic for 2,000 psi BOP

EXHIBIT D.

BOP Stack



Choke & Kill Manifold



Working Pressure for all equipment is 2,000 psi or greater

DUGAN PRODUCTION CORP.

Sixteen G's #91-S