

UNITED STATES
DEPARTMENT OF THE INTERIOR
BUREAU OF LAND MANAGEMENT

SUBMIT IN
DUPLICATE

(See other instructions on
reverse side)

FORM APPROVED
OMB NO. 1004-0137
Expires: February 28, 1995

WELL COMPLETION OR RECOMPLETION REPORT AND LOG*

RECEIVED

AUG 10 2010

Farmington Field Office
Bureau of Land Management

1a. TYPE OF WELL ☐ OIL WELL ☒ GAS WELL ☐ DRY ☐ OTHER

b. TYPE OF COMPLETION:
☒ NEW WELL ☐ WORKOVER ☐ DEEPEN ☐ PLUG BACK ☐ DIFF RESVR ☐ OTHER

2. NAME OF OPERATOR

WILLIAMS PRODUCTION COMPANY

3. ADDRESS AND TELEPHONE NO

P.O. Box 640, Aztec, NM 87410 (505) 634-4208

4. LOCATION OF WELL (Report location clearly and in accordance with any State requirements)*

At Surface: 1715' FNL & 770' FEL, Sec 20 (H), T28N, R3W

At top production interval reported below : Same

At total depth: Same

5. LEASE DESIGNATION AND LEASE NO.
701-06-0016

6 IF INDIAN, ALLOTTEE OR

JAECO

7. UNIT AGREEMENT NAME

8. FARM OR LEASE NAME, WELL NO

JAECO-WPX 28-3 20 #011

9. API WELL NO.

30-039-30596-0002

10. FIELD AND POOL, OR WILDCAT
BLANCO MV/BASIN MC/BASIN DK

11. SEC, T, R, M, OR BLOCK AND
SURVEY OR AREA

Sec 20, T28N, R3W

12. COUNTY OR

Rio Arriba

13. STATE

New Mexico

19. ELEVATION CASINGHEAD

15. DATE
SPUDDED
3/20/10

16. DATE T.D.
REACHED
4/9/10

17. DATE COMPLETED (READY TO PRODUCE)

14. PERMIT NO.

DATE ISSUED

18. ELEVATIONS (DK, RKB, RT, GR, ETC)*

7237' GR

20. TOTAL DEPTH, MD & TVD
8720' MD

21. PLUG, BACK T.D., MD & TVD
8309' MD

22. IF MULTICOMP,
HOW MANY
2

23. INTERVALS
DRILLED BY

ROTARY TOOLS
x

CABLE TOOLS

24. PRODUCING INTERVAL(S), OF THIS COMPLETION - TOP, BOTTOM, NAME (MD AND TVD)*

Basin MC - 7290' - 7738' The MC production is shut in pending commingle authorization.

25. WAS DIRECTIONAL SURVEY MADE

NO

26. TYPE ELECTRIC AND OTHER LOGS RUN

Array Induction, Compensated GR-Density-Neutron

27. WAS WELL CORED

NO

28. CASING REPORT (Report all strings set in well)

CASING SIZE/GRADE	WEIGHT, LB/FT	DEPTH SET (MD)	HOLE SIZE	TOP OF CEMENT, CEMENTING RECORD	AMOUNT PULLED
10-3/4", J-55	40.5#	312'	14-3/4"	200 SX - SURFACE	
7-5/8", K-55	26.4#	4462'	9-7/8"	735 SX SURFACE	
4 1/2", N-80	11.6#	8717'	6-3/4"	600 SX - 4340' TOC	

29. LINER RECORD

SIZE	TOP (MD)	BOTTOM (MD)	SACKS CEMENT*	SCREEN (MD)	SIZE	DEPTH SET (MD)	PACKER SET (MD)

31. PERFORATION RECORD (Interval, size, and number)

Mancos 2nd: 72, 0.34" holes

Mancos 1st: (69, 0.34" holes)

32. ACID, SHOT, FRACTURE, CEMENT SQUEEZE, ETC

DEPTH INTERVAL
(MD)

AMOUNT AND KIND OF MATERIAL USED

7290' - 7490'

Frac with 17,163# 100 mesh Ottawa sand followed with 44,131# of 30/50 Ottawa sand followed with 89,671# 20/40 Ottawa

7550' - 7738'

Frac with 13,044# 100 mesh Ottawa sand followed with 44,809# of 30/50 Ottawa sand followed with 93,706# 20/40 Ottawa

RCVD AUG 16 '10
OIL CONS. DIV.

33. PRODUCTION

DIST. 3

DATE OF FIRST PRODUCTION		PRODUCTION METHOD (Flowing, gas lift, pumping-size and type of pump)				WELL STATUS (PRODUCING OR SI)	
6/8/10		flowing				SI	
DATE OF TEST	TESTED	CHOKE SIZE	PROD'N FOR TEST PERIOD	OIL - BBL	GAS - MCF	WATER - BBL	GAS OIL RATIO
						ACCEPTED FOR RECORD	
FLOW TBG PRESS	CASING PRESSURE	CALCULATED 24-HOUR RATE		OIL - BBL	GAS - MCF	WATER - BBL	OIL RATIO - API (CORR.)

34. DISPOSITION OF GAS (Sold, used for fuel, vented, etc.). TO BE SOLD

35. LIST OF ATTACHMENTS: SUMMARY OF POROUS ZONES, WELLBORE DIAGRAM

36. I hereby certify that the foregoing and attached information is complete and correct as determined from all available records

SIGNED

Matthew Riley

TITLE Regulatory Specialist SR

NMOCD

DATE 8/10/10

FARMINGTON FIELD OFFICE
BY *SEV*

37 SUMMARY OF POROUS ZONES (Show all important zones of porosity and contents thereof, cored intervals, and all drill-stem, tests, including depth interval tested, cushion used, time tool open, flowing and shut-in pressures, and recoveries)					38 GEOLOGIC MARKERS			
FORMATION	TOP	BOTTOM	DESCRIPTION, CONTENTS, ETC		NAME	TOP		
						NAME	MEASURED DEPTH	TRUE VERTICAL DEPTH
						CLIFFHOUSE	5882'	
						POINT LOOKOUT	6210'	
						MANCOS	6611'	
						GRENEROS	8253'	
						DAKOTA	8406'	

UNITED STATES
DEPARTMENT OF THE INTERIOR
BUREAU OF LAND MANAGEMENT

SUBMIT IN
DUPLICATE

(See other instructions on
reverse side)

FORM APPROVED
OMB NO. 1004-0137
Expires: February 28, 1995

WELL COMPLETION OR RECOMPLETION REPORT

RECEIVED

AUG 10 2010

1a. TYPE OF WELL: ☐ OIL WELL ☒ GAS WELL ☐ DRY ☐ OTHER

b. TYPE OF COMPLETION:
☒ NEW WELL ☐ WORKOVER ☐ DEEPEN ☐ PLUG BACK ☐ DIFF. RESVR. ☐ OTHER

2. NAME OF OPERATOR

WILLIAMS PRODUCTION COMPANY

Farmington Field Office
Bureau of Land Management

3. ADDRESS AND TELEPHONE NO.

P.O. Box 640, Aztec, NM 87410 (505) 634-4208

4. LOCATION OF WELL (Report location clearly and in accordance with any State requirements)*

At Surface: 1715' FNL & 770' FEL, Sec 20 (H), T28N, R3W

At top production interval reported below : Same

At total depth: Same

8. FARM OR LEASE NAME, WELL NO.

JAECO-WPX 28-3 20 #011

9. API WELL NO.

30-039-30596 -0003

10. FIELD AND POOL, OR WILDCAT
BLANCO MV/BASIN MC/BASIN DK

11. SEC., T, R., M., OR BLOCK AND
SURVEY OR AREA
Sec 20, T28N, R3W

12. COUNTY OR

Rio Arriba

13. STATE

New Mexico

15. DATE

SPUDDED

3/20/10

16. DATE T.D.

REACHED

4/9/10

17. DATE COMPLETED (READY TO PRODUCE)

14. PERMIT NO.

DATE ISSUED

18. ELEVATIONS (DK, RKB, RT, GR, ETC.)*

7237' GR

19. ELEVATION CASINGHEAD

20. TOTAL DEPTH, MD & TVD

8720' MD

21. PLUG, BACK T.D., MD & TVD

8309' MD

22. IF MULTICOMP.,

HOW MANY

2

23. INTERVALS

DRILLED BY

ROTARY TOOLS

x

CABLE TOOLS

24. PRODUCING INTERVAL(S), OF THIS COMPLETION - TOP, BOTTOM, NAME (MD AND TVD)*

Basin MV 6236' - 6389'

25. WAS DIRECTIONAL SURVEY MADE

NO

26. TYPE ELECTRIC AND OTHER LOGS RUN

Array Induction, Compensated GR-Density-Neutron

27. WAS WELL CORED

NO

28. CASING REPORT (Report all strings set in well)

CASING SIZE/GRADE.	WEIGHT, LB/FT	DEPTH SET (MD)	HOLE SIZE	TOP OF CEMENT, CEMENTING RECORD	AMOUNT PULLED
10-3/4", J-55	40.5#	312'	14-3/4"	200 SX - SURFACE	
7-5/8", K-55	26.4#	4462'	9-7/8"	735 SX SURFACE	
4 1/2", N-80	11.6#	8717'	6-3/4"	600 SX - 4340' TOC	

29. LINER RECORD

SIZE	TOP (MD)	BOTTOM (MD)	SACKS CEMENT*	SCREEN (MD)	SIZE	DEPTH SET (MD)	PACKER SET (MD)

31. PERFORATION RECORD (Interval, size, and number)

32. ACID, SHOT, FRACTURE, CEMENT SQUEEZE, ETC.

DEPTH INTERVAL
(MD)

AMOUNT AND KIND OF MATERIAL USED

6236'-6389'

Frac with 89,784# 20/40 Ottawa w/SWNT

RCVD AUG 16 '10

OIL CONS. DIV.

33. PRODUCTION

DIST. 3

DATE OF FIRST PRODUCTION		PRODUCTION METHOD (Flowing, gas lift, pumping-size and type of pump)				WELL STATUS (PRODUCING OR SI)	
NA		flowing				SI	
DATE OF TEST	TESTED	CHOKE SIZE	PROD'N FOR TEST PERIOD	OIL - BBL	GAS - MCF	WATER - BBL	GAS-OIL RATIO
FLOW TBG PRESS	CASING PRESSURE	CALCULATED 24-HOUR RATE		OIL - BBL	GAS - MCF	WATER - BBL	OIL GRAVITY-API (CORR.)

34. DISPOSITION OF GAS (Sold, used for fuel, vented, etc.): TO BE SOLD

TEST WITNESSED BY:

35. LIST OF ATTACHMENTS: SUMMARY OF POROUS ZONES, WELLBORE DIAGRAM

36. I hereby certify that the foregoing and attached information is complete and correct as determined from all available records

SIGNED

TITLE Regulatory Specialist SR

DATE 8/10/10

FARMINGTON FIELD OFFICE
BY SCV

AUG 13 2010

NMOCD

38 GEOLOGIC MARKERS

FORMATION	TOP	BOTTOM	DESCRIPTION, CONTENTS, ETC.		NAME	TOP		
						NAME	MEASURED DEPTH	TRUE VERTICAL DEPTH
						CLIFFHOUSE	5882'	
						POINT LOOKOUT	6210'	
						MANCOS	6611'	
						GRENEROS	8253'	
						DAKOTA	8406'	

JAECO-WPX 28-3 20 #011
Blanco MV, Basin MC, Basin DK

Spud Date: 3/20/2010

Location:
 1715' FNL & 770' FEL
 Section 20(H), T28N, R3W
 Rio Arriba, NM

Elevation: 7237' GR
API #: 30-039-30596

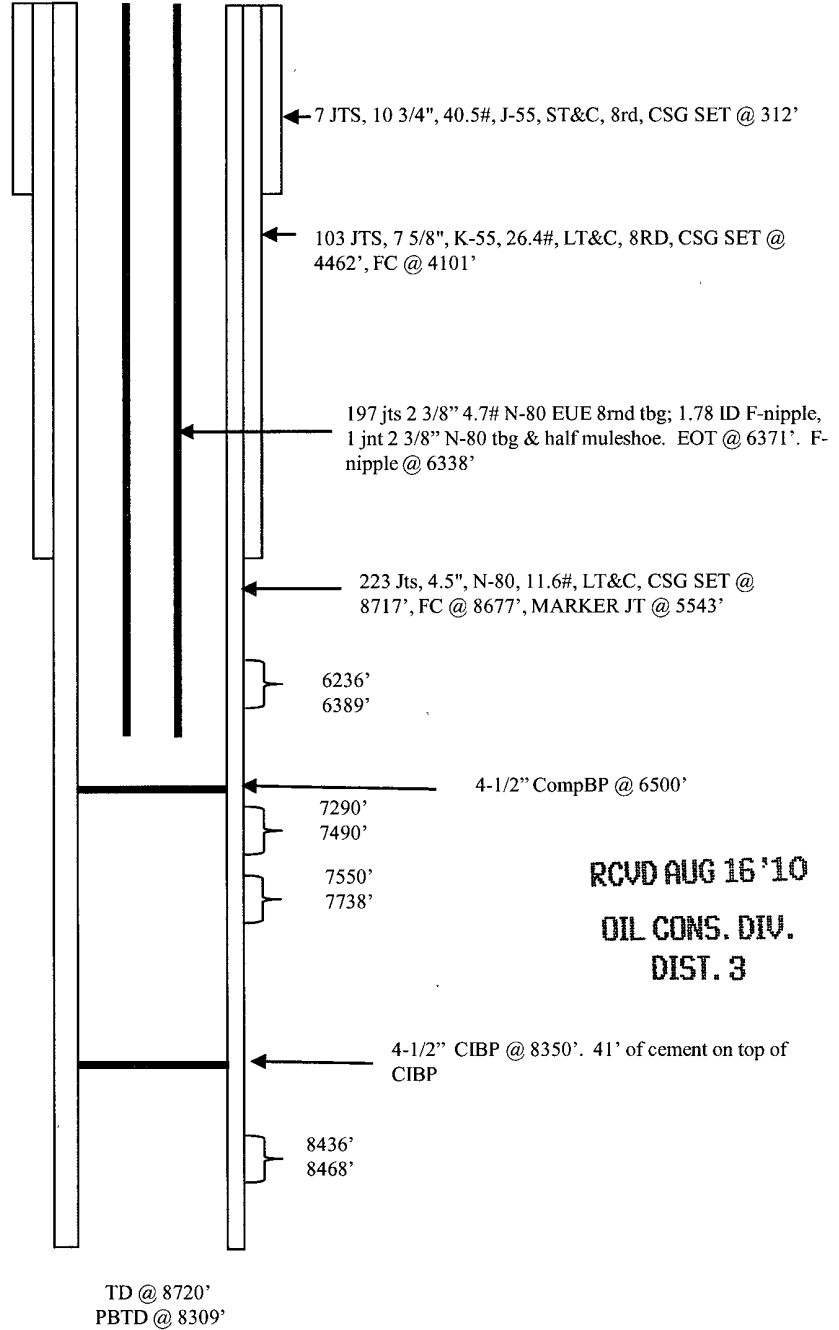
<u>Tops</u>	<u>Depth</u>
Cliff House	5882'
Point Lookout	6210'
Mancos	6611'
Graneros	8253'
Dakota	8406'

Mesaverde: 6236'-6389' (44, 0.34" holes)
 Frac with 89,784# 20/40 Ottawa w/SWNT

Mancos 2nd: 7290' - 7490' (72, 0.34" holes)
 Frac with 17,163# 100 mesh Ottawa sand followed
 with 44,131# of 30/50 Ottawa sand followed with
 89,671# 20/40 Ottawa

Mancos 1st: 7550' - 7738' (69, 0.34" holes)
 Frac with 13,044# 100 mesh Ottawa sand followed
 with 44,809# of 30/50 Ottawa sand followed with
 93,706# 20/40 Ottawa

DK: 8436' - 8468' (30, 0.34" holes)
 Holes not fraced



RCVD AUG 16 '10
OIL CONS. DIV.
DIST. 3

HOLE SIZE	CASING	CEMENT	CU. FT.	CMT TOP
14-3/4"	10 3/4", 40.5#	200 sxs	360 cu.ft.	surface
9 7/8"	7 5/8", 26.4#	735 sxs	1579 cu.ft.	surface
6 3/4"	4-1/2", 11.6#	600 sxs	840 cu.ft.	4340' (CBL)

