

District I  
1625 N. French Dr., Hobbs, NM 88240  
District II  
1301 W. Grand Ave., Artesia, NM 88210  
District III  
1000 Rio Brazos Rd., Aztec, NM 87410  
District IV  
1220 S. St Francis Dr., Santa Fe, NM 87505

State of New Mexico  
Energy, Minerals & Mining Resources Department  
OIL CONSERVATION DIVISION  
2040 South Pacheco  
Santa Fe, NM 87505

Form C - 102  
Revised October 12, 2005  
Submit to Appropriate District Office  
State Lease - 4 Copies  
Fee Lease - 3 Copies

☐ AMENDED REPORT

WELL LOCATION AND ACREAGE DEDICATION PLAT

APA Number <i>30-46-34780</i>	Pool Code <i>71629</i>	Pool Name <i>Basin Fruitland</i>
Property Code <i>3722</i>	Property Name WESTLAND PARK	Well Number <i>2</i>
OGRI No.	Operator Name MERRION OIL & GAS	Elevation <i>5224'</i>

Surface Location

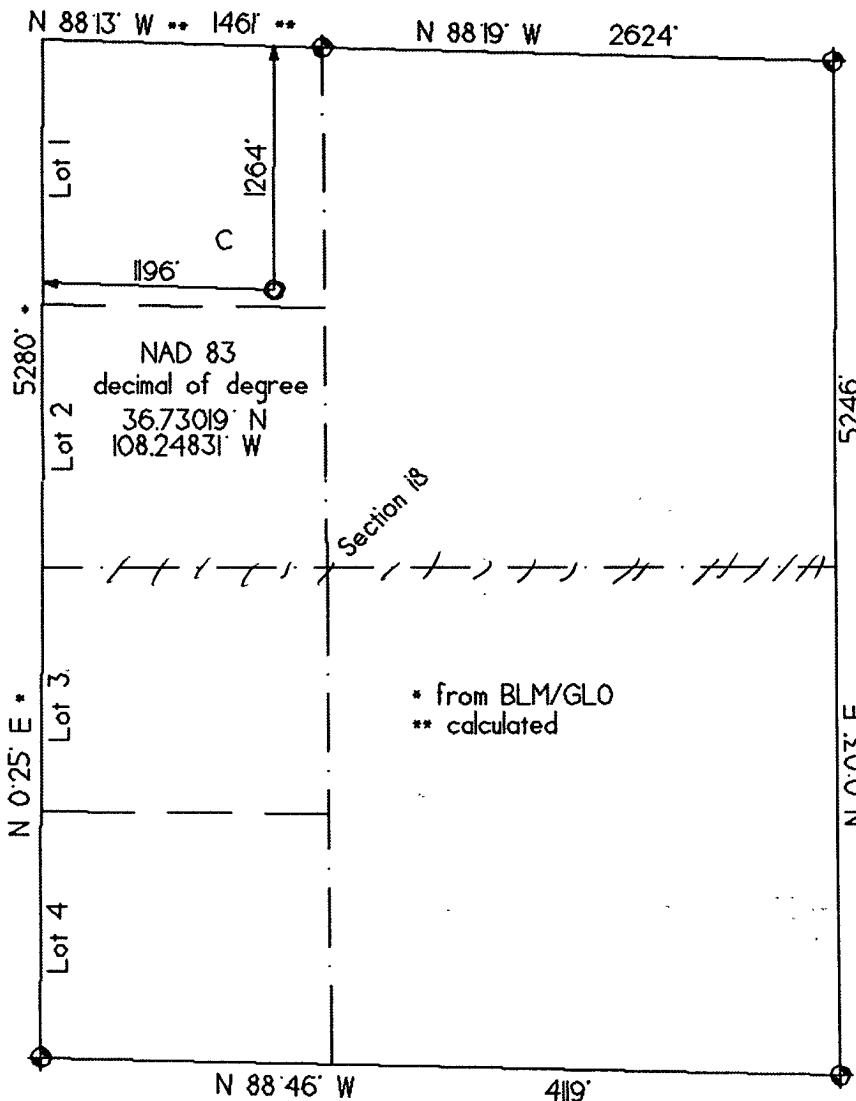
UL or Lot	Sec.	Twp.	Rge.	Lot Idh.	Feet from >	North/South	Feet from >	East/West	County
C	18	29 North	13 West		1264'	North	1196'	West	San Juan

Bottom Hole Location If Different From Surface

UL or Lot	Sec.	Twp.	Rge.	Lot Idh.	Feet from >	North/South	Feet from >	East/West	County
									RCVD AUG 15 '10 OIL CONS. DIV.

Dedicated Acres <i>250.15</i>	Joint or Infill	Consolidation Code	Order No. <i>DIST. 3</i>
----------------------------------	-----------------	--------------------	-----------------------------

No allowable will be assigned to this completion until all interests have been consolidated or a non-standard unit has been approved by the division.



OPERATOR CERTIFICATION

I hereby certify that the information contained herein is true and complete to the best of my knowledge and belief, and that this organization either owns a working interest or unleased mineral interest in the land including the bottom hole location or has a right to drill this well at this location pursuant to a contract with an owner of such a mineral or working interest, or to a voluntary pool agreement or a compulsory pooling order heretofore entered by the division.

Date *8-11-10*

Signature *Philana Thompson*

Printed Name *Philana Thompson*

SURVEYOR CERTIFICATION

I hereby certify that the well location shown on this plat was plotted from field notes of actual surveys made by me or under my supervision, and that the same is true and correct to the best of my belief.

Date of survey *07 09 '08*

Signature and Seal of Professional Surveyor



Certificate Number *6844*