

UNITED STATES  
DEPARTMENT OF THE INTERIOR  
BUREAU OF LAND MANAGEMENT

RECEIVED

APPLICATION FOR PERMIT TO DRILL, DEEPEN, OR PLUG BACK

AUG 20 2010

1a. Type of Work DRILL	5. Lease Number NM-03491 Farmington Field Office Unit Reporting Number Bureau of Land Management	
1b. Type of Well GAS	6. If Indian, All. or Tribe	
2. Operator <b>BURLINGTON</b> RESOURCES Oil & Gas Company, LP	7. Unit Agreement Name Huerfanito Unit	
3. Address & Phone No. of Operator PO Box 4289, Farmington, NM 87499  (505) 326-9700	8. Farm or Lease Name  9. Well Number 178	
4. Location of Well Surface: Unit B(NWNE), 715' FNL & 1535' FEL  Surface: Latitude: 36.522546° N (NAD83) <i>Unit B</i> Longitude: 107.790146° W	10. Field, Pool, Wildcat Basin Fruitland Coal  11. Sec., Twn, Rge, Mer. (NMPM) Unit B, Sec. 4, T26N, R9W  API # 30-045- <i>35192</i>	
14. Distance in Miles from Nearest Town 25.2 miles from Bloomfield, NM	12. County San Juan	13. State NM
15. Distance from Proposed Location to Nearest Property or Lease Line 715'	17. Acres Assigned to Well 321.12 E/2 FC	
16. Acres in Lease 642.560	20. Rotary or Cable Tools Rotary	
18. Distance from Proposed Location to Nearest Well, Drlg, Compl, or Applied for on this Lease 298' from Huerfanito Unit 61E (DK)	22. Approx. Date Work will Start DRLING OPERATIONS AUTHORIZED ARE SUBJECT TO COMPLIANCE WITH ATTACHED "GENERAL REQUIREMENTS".	
19. Proposed Depth 2423' <i>This action is subject to technical and procedural review pursuant to 43 CFR 3165.3 and appeal pursuant to 43 CFR 3165.4</i>	24. Authorized by: <i>Dollie L. Busse</i> Dollie L. Busse (Staff Regulatory Tech)	
21. Elevations (DF, FT, GR, Etc.) 6463' GL	Date <i>8/19/10</i>	
23. Proposed Casing and Cementing Program See Operations Plan attached		

PERMIT NO.

APPROVAL DATE

APPROVED BY

TITLE

DATE

Archaeological Report attached

Threatened and Endangered Species Report attached

NOTE: This format is issued in lieu of U.S. BLM Form 3160-3

Title 18 U.S.C. Section 1001, makes it a crime for any person knowingly and willfully to make to any department or agency of the United States any false, fictitious or fraudulent statements or presentations as to any matter within its jurisdiction.

Example Master Plan Type 2

Bond Numbers NMB-000015 and NMB-000089

OCT 06 2010

NMOCD

NOTIFY AZTEC OGD 24 HRS PRIOR TO CASING & CEMENT

BLM'S APPROVAL OR ACCEPTANCE OF THIS ACTION DOES NOT RELIEVE THE LESSEE AND OPERATOR FROM OBTAINING ANY OTHER AUTHORIZATION REQUIRED FOR OPERATIONS ON FEDERAL AND INDIAN LANDS

DISTRICT I  
1625 N. French Dr., Hobbs, N.M. 88240

DISTRICT II  
1301 West Grand Avenue, Artesia, N.M. 88210

DISTRICT III  
1000 Rio Brazos Rd., Aztec, N.M. 87410

DISTRICT IV  
1220 S. St. Francis Dr., Santa Fe, NM 87505

State of New Mexico  
Energy, Minerals & Natural Resources Department

OIL CONSERVATION DIVISION

1220 South St. Francis Dr.  
Santa Fe, NM 87505

RECEIVED

AUG 20 2010

Form C-102  
Revised October 12, 2005

Submit to Appropriate District Office

State Lease - 4 Copies

Fee Lease - 3 Copies

Farmington Field Office  
Bureau of Land Management

☐ AMENDED REPORT

WELL LOCATION AND ACREAGE DEDICATION PLAT

<sup>1</sup> API Number 30-045 - 35192	<sup>2</sup> Pool Code 71629	<sup>3</sup> Pool Name BASIN FRUITLAND COAL
<sup>4</sup> Property Code 7138	<sup>5</sup> Property Name HUERFANITO UNIT	<sup>6</sup> Well Number 178
<sup>7</sup> GRID No. 14538	<sup>8</sup> Operator Name BURLINGTON RESOURCES OIL & GAS COMPANY LP	<sup>9</sup> Elevation 6463'

<sup>10</sup> Surface Location

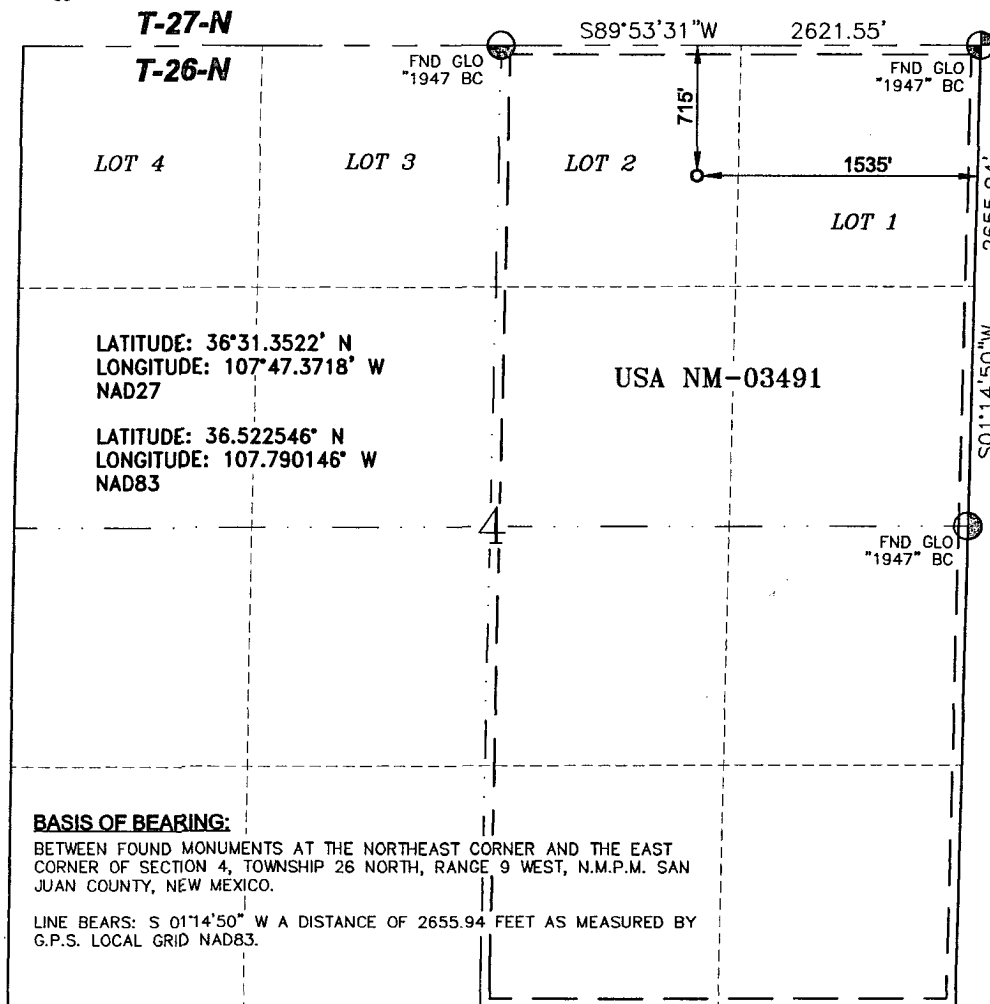
UL or lot no.	Section	Township	Range	Lot Idn	Feet from the	North/South line	Feet from the	East/West line	County
B	4	26-N	9-W		715	NORTH	1535	EAST	SAN JUAN

<sup>11</sup> Bottom Hole Location If Different From Surface

UL or lot no.	Section	Township	Range	Lot Idn	Feet from the	North/South line	Feet from the	East/West line	County
<sup>12</sup> Dedicated Acres FC 321.12 ACRES E/2			<sup>13</sup> Joint or Infill		<sup>14</sup> Consolidation Code		<sup>15</sup> Order No.		

NO ALLOWABLE WILL BE ASSIGNED TO THIS COMPLETION UNTIL ALL INTERESTS HAVE BEEN CONSOLIDATED  
OR A NON-STANDARD UNIT HAS BEEN APPROVED BY THE DIVISION

16



17 OPERATOR CERTIFICATION

I hereby certify that the information contained herein is true and complete to the best of my knowledge and belief, and that this organization either owns a working interest or unleased mineral interest in the land including the proposed bottom hole location or has a right to drill this well at this location pursuant to a contract with an owner of such a mineral or a working interest, or to a voluntary pooling agreement or a compulsory pooling order heretofore entered by the division.

*Dollie L. Busse 7/20/10*  
Signature  
Dollie L. Busse  
Printed Name

18 SURVEYOR CERTIFICATION

I hereby certify that the well location shown on this plat was plotted from field notes of actual surveys made by me or under my supervision, and that the same is true and correct to the best of my belief.

APRIL 15, 2010  
Date of Survey

Signature and Seal of



GLEN W. RUSSELL  
Certificate Number

15703

# PROJECT PROPOSAL - New Drill / Sidetrack

San Juan Business Unit

HUERFANITO UNIT 178

DEVELOPMENT

Lease:		AFE #: WAN.CDR.9399		AFE \$: 561,510.00	
Field Name: SAN JUAN		Rig: H&P Rig 283		State: NM	County: SAN JUAN
Geologist:		Phone:	Geophysicist:		Phone:
Geoscientist:		Phone:	Prod. Engineer:		Phone:
Res. Engineer:		Phone:	Proj. Field Lead:		Phone:

## Primary Objective (Zones):

Zone	Zone Name
JCV	BASIN FRUITLAND COAL (GAS)

Location: Surface		Datum Code: NAD 27		Straight Hole	
Latitude: 36.522537	Longitude: -107.789531	X:	Y:	Section: 04	Range: 009W
Footage X: 1535 FEL	Footage Y: 715 FNL	Elevation: 6463	(FT)	Township: 026N	
Tolerance:					
Location Type: Year Round		Start Date (Est.): 1/1/2011		Completion Date:	Date In Operation:
Formation Data: Assume KB = 6478 Units = FT					

Formation Call & Casing Points	Depth (TVD in Ft)	SS (Ft)	MD (Ft)	Depletion (Yes/No)	BHP (PSIG)	BHT	Remarks
Surface Casing	120	6358		<input type="checkbox"/>			8-3/4 hole. 7" 20 ppf, J-55 STC csg. Cement with 50 cuft. Circulate cement to surface.
OJO ALAMO	1322	5156		<input type="checkbox"/>			
KIRTLAND	1480	4998		<input type="checkbox"/>			
FRUITLAND	1808	4670		<input type="checkbox"/>			Gas
FRUITLAND COAL	1909	4569		<input type="checkbox"/>			
PICTURED CLIFFS	2223	4255		<input type="checkbox"/>	275		Gas; TD - 200' below T/PCCF
Total Depth	2423	4055		<input type="checkbox"/>			6-1/4" hole. 4-1/2" 10.5 ppf, J-55, STC casing. Cement with 325 cuft. Circulate cement to surface.

## Reference Wells:

Reference Type	Well Name	Comments
Production	Huerfanito Unit 22-4	26N 9W 4 NW SE NE
Production	Huerfanito Unit 61E	26N 9W 4 SW NE NE
Production	Huerfanito Unit 22R	26N 9W 4 NW SE NE

## Logging Program:

Intermediate Logs: ☐ Log only if show ☐ GR/ILD ☐ Triple Combo

TD Logs: ☐ Triple Combo ☐ Dipmeter ☐ RFT ☐ Sonic ☐ VSP ☐ TDT ☒ Other

Cased Hole GR / CBL

## Additional Information:

Log Type	Stage	From (Ft)	To (Ft)	Tool Type/Name	Remarks
----------	-------	-----------	---------	----------------	---------



Directions from the Intersection of Hwy 550 &  
Hwy 64 in Bloomfield, NM

To:

**Burlington Resources Oil & Gas Company LP**  
**HVERFANITO UNIT #178**

715' FNL & 1535' FEL,

Section 4, T26N, R9W, N.M.P.M., San Juan County,  
New Mexico

Latitude: 36° 31' 21.166" N

Longitude: 107° 47' 24.524"W

Nad 1983

From the Intersection of Hwy 550 &  
Hwy 64 in Bloomfield, NM

Take Hwy 550 (south) for 15.8 miles to CR 7225

Turn left (east) on CR 7225 for 4.5 miles,

Turn right (easterly) for 4.2 miles,

Turn left (northerly) 0.6 miles,

Turn left (southwesterly) 0.1 miles to newly staked location,

Co-located with existing location, HVERFANITO UNIT #61E.