

District I  
1625 N. French Dr., Hobbs, NM 88240  
District II  
1301 W. Grand Avenue, Artesia, NM 88210  
District III  
1000 Rio Brazos Road, Aztec, NM 87410  
District IV  
1220 S. St. Francis Dr., Santa Fe, NM 87505

State of New Mexico  
Energy Minerals and Natural Resources

Form C-101  
June 16, 2008

Oil Conservation Division  
1220 South St. Francis Dr.  
Santa Fe, NM 87505

Submit to appropriate District Office

☒ AMENDED REPORT

**APPLICATION FOR PERMIT TO DRILL, RE-ENTER, DEEPEN, PLUGBACK, OR ADD A ZONE**

<sup>1</sup> Operator Name and Address Dugan Production Corp. 709 East Murray Drive, Farmington, New Mexico 87401		<sup>2</sup> OGRID Number 006515
<sup>3</sup> Property Code 384108		<sup>4</sup> APL Number 30-045-35235
<sup>5</sup> Property Name Moncrief Com		<sup>6</sup> Well No. 100
<sup>7</sup> Proposed Pool 1 Basin Fruitland Coal (71629)		<sup>8</sup> Proposed Pool 2

**Surface Location**

UL or lot no.	Section	Township	Range	Lot Idn	Feet from the	North/South line	Feet from the	East/West line	County
A	2	30N	13W	1	990	North	680	East	San Juan

**Proposed Bottom Hole Location If Different From Surface**

UL or lot no.	Section	Township	Range	Lot Idn	Feet from the	North/South line	Feet from the	East/West line	County

**Additional Well Information**

<sup>11</sup> Work Type Code N	<sup>12</sup> Well Type Code G	<sup>13</sup> Cable/Rotary R	<sup>14</sup> Lease Type Code S	<sup>15</sup> Ground Level Elevation 5946' -GL
<sup>16</sup> Multiple No	<sup>17</sup> Proposed Depth 2200-Feet	<sup>18</sup> Formation Fruitland Coal	<sup>19</sup> Contractor Wayne Smith	<sup>20</sup> Spud Date ASAP

**Proposed Casing and Cement Program**

Hole Size	Casing Size	Casing weight/foot	Setting Depth	Sacks of Cement	Estimated TOC
12-1/4"	8-5/8"	24#	120-Feet	70-cf	Surface
7"	5-1/2"	14#	2200-Feet	350-cf	Surface

<sup>22</sup> Describe the proposed program. If this application is to DEEPEN or PLUG BACK, give the data on the present productive zone and proposed new productive zone. Describe the blowout prevention program, if any. Use additional sheets if necessary.

A water based gel-mud will be used to drill surface and production casing hole. Standard 2,000 psi BOP will be used to drill production hole. The Fruitland Coal will be completed from approximately 2040 - 2050 feet. The interval will be fracture stimulated.

RCVD MAR 30 '11  
OIL CONS. DIV.  
DIST. 3

<sup>23</sup> I hereby certify that the information given above is true and complete to the best of my knowledge and belief.		OIL CONSERVATION DIVISION	
Signature: <i>Kurt Fagrelus</i>		Approved by: <i>Chris Smith</i> 4-13-11	
Printed name: Kurt Fagrelus		Title: SUPERVISOR DISTRICT # 3	
Title: VP-Exploration		Approval Date: APR 13 2011	Expiration Date: APR 13 2012
E-mail Address: kfagrelus@duganproduction.com			
Date: 2/29/2011	Phone: 505-325-1821	Conditions of Approval Attached <input type="checkbox"/>	

APR 13 2011

WILL COMPLY 5.9 Compliance

District I  
1625 N. French Dr., Hobbs, NM 88240

District II  
1301 W. Grand Avenue, Artesia, NM 88210

District III  
1000 Rio Brazos Rd., Aztec, NM 87410

District IV  
1220 S. St. Francis Dr., Santa Fe, NM 87505

State of New Mexico  
Energy, Minerals & Natural Resources Department

OIL CONSERVATION DIVISION  
1220 South St. Francis Dr.  
Santa Fe, NM 87505

Form C-102  
Revised October 12, 2005  
Instructions on back  
Submit to Appropriate District Office  
State Lease - 4 Copies  
Fee Lease - 3 Copies

☒ AMENDED REPORT

WELL LOCATION AND ACREAGE DEDICATION PLAT

*API Number 30.045-35235		*Pool Code 71629		*Pool Name BASIN FRUITLAND COAL	
*Property Code 384168		*Property Name MONCRIEF			*Well Number 100
*GRID No. 006515		*Operator Name DUGAN PRODUCTION CORPORATION			*Elevation 5946'

<sup>10</sup> Surface Location

UL or lot no.	Section	Township	Range	Lot Idn	Feet from the	North/South line	Feet from the	East/West line	County
A	2	30N	13W		990	NORTH	680	EAST	SAN JUAN

<sup>11</sup> Bottom Hole Location If Different From Surface

UL or lot no.	Section	Township	Range	Lot Idn	Feet from the	North/South line	Feet from the	East/West line	County
<sup>12</sup> Dedicated Acres 318.90 Acres - (E/2)					<sup>13</sup> Joint or Infill	<sup>14</sup> Consolidation Code	<sup>15</sup> Order No.		

NO ALLOWABLE WILL BE ASSIGNED TO THIS COMPLETION UNTIL ALL INTERESTS HAVE BEEN CONSOLIDATED  
OR A NON-STANDARD UNIT HAS BEEN APPROVED BY THE DIVISION

<sup>16</sup> 1260.50' LOT 4	5194.86'	COP OG-959-6 LOT 2		1925'	LOT 1	990'	1285.68'
		LAT: 36.84626°N LONG: 108.16738°W					
		COP E-4550-6					
		1540'					
1273.14'	2	Dugan E-453		1304.82'	Dugan E-3555		2610.30'
		Dugan OG-4070					
		5334.12'					

<sup>17</sup> OPERATOR CERTIFICATION

I hereby certify that the information contained herein is true and complete to the best of my knowledge and belief, and that this organization either owns a working interest or unleased mineral interest in the land including the proposed bottom-hole location or has a right to drill this well at this location pursuant to a contract with an owner of such a mineral or working interest, or to a voluntary pooling agreement or a compulsory pooling order heretofore entered by the division.


*Kurt Fagrelus* 3-29-2011  
Signature Date  
Kurt Fagrelus  
Printed Name

<sup>18</sup> SURVEYOR CERTIFICATION

I hereby certify that the well location shown on this plat was plotted from field notes of actual surveys made by me or under my supervision, and that the same is true and correct to the best of my belief

Date of Survey: MARCH 8, 2011

Signature and Seal of Professional Surveyor



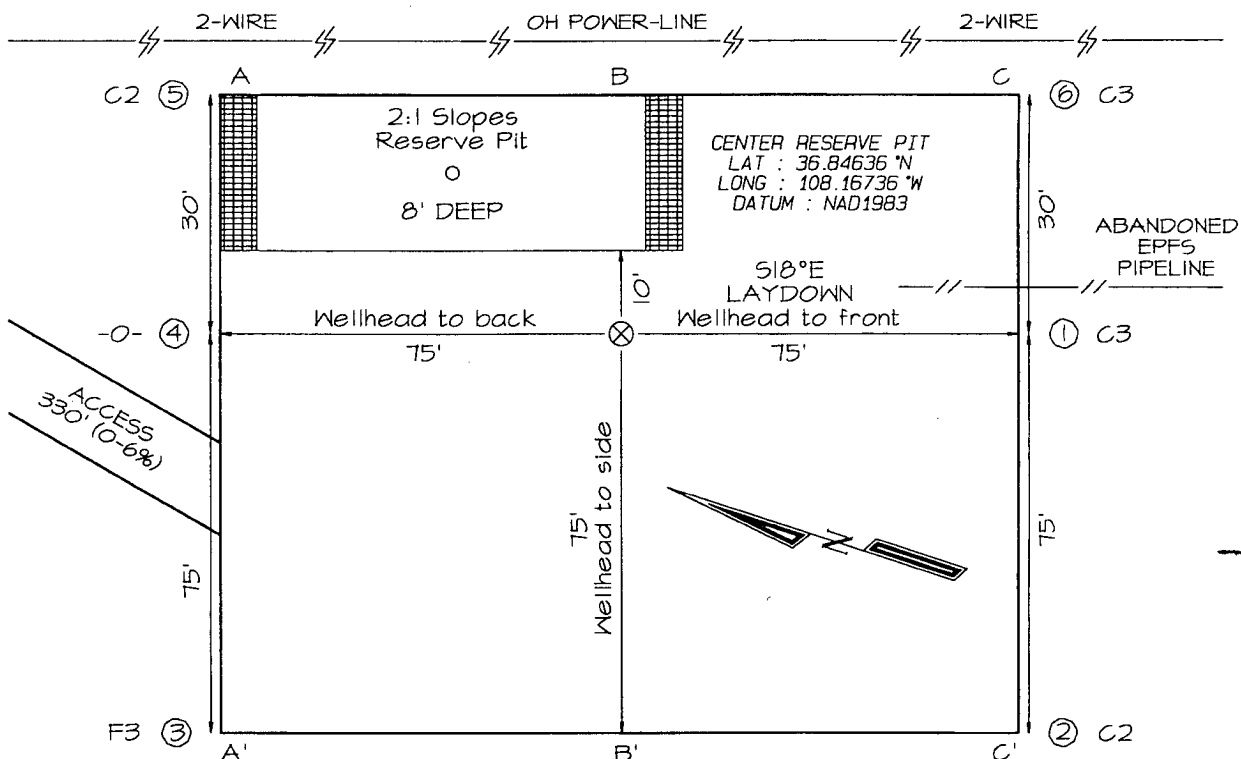
**JASON C. EDWARDS**  
Certificate Number 15269

**DUGAN PRODUCTION CORPORATION MONCRIEF #100**  
**990' FNL & 680' FEL, SECTION 2, T30N, R13W, NMPM**  
**SAN JUAN COUNTY, NEW MEXICO GROUND ELEVATION: 5946'**

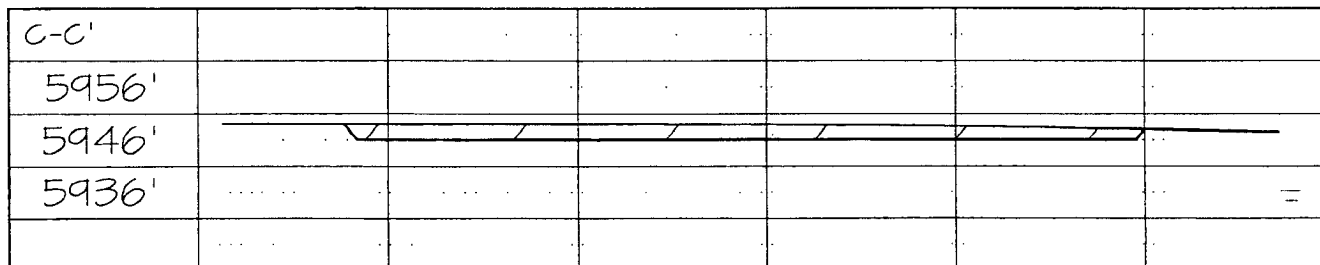
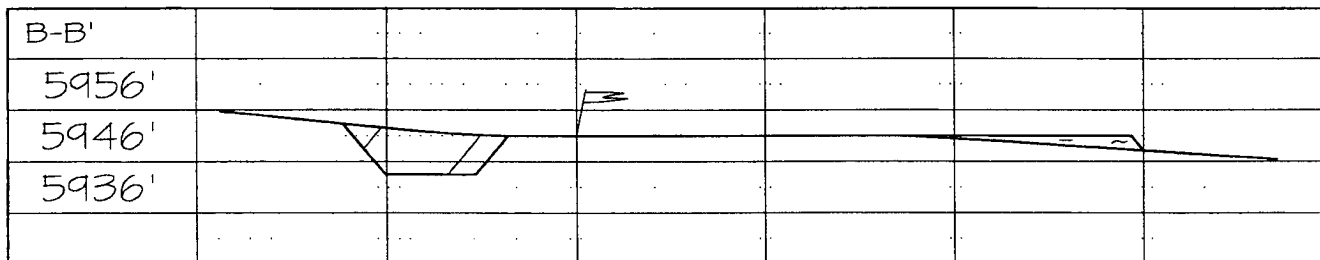
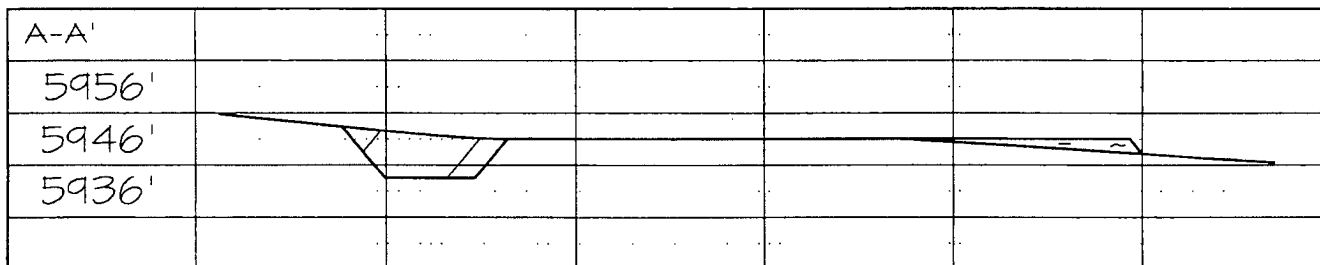
**LATITUDE: 36.84626° N**  
**LONGITUDE: 108.16738° W**  
 DATUM: NAD1983

PLAT NOTE:

\*SURFACE OWNER\*  
 State of New Mexico

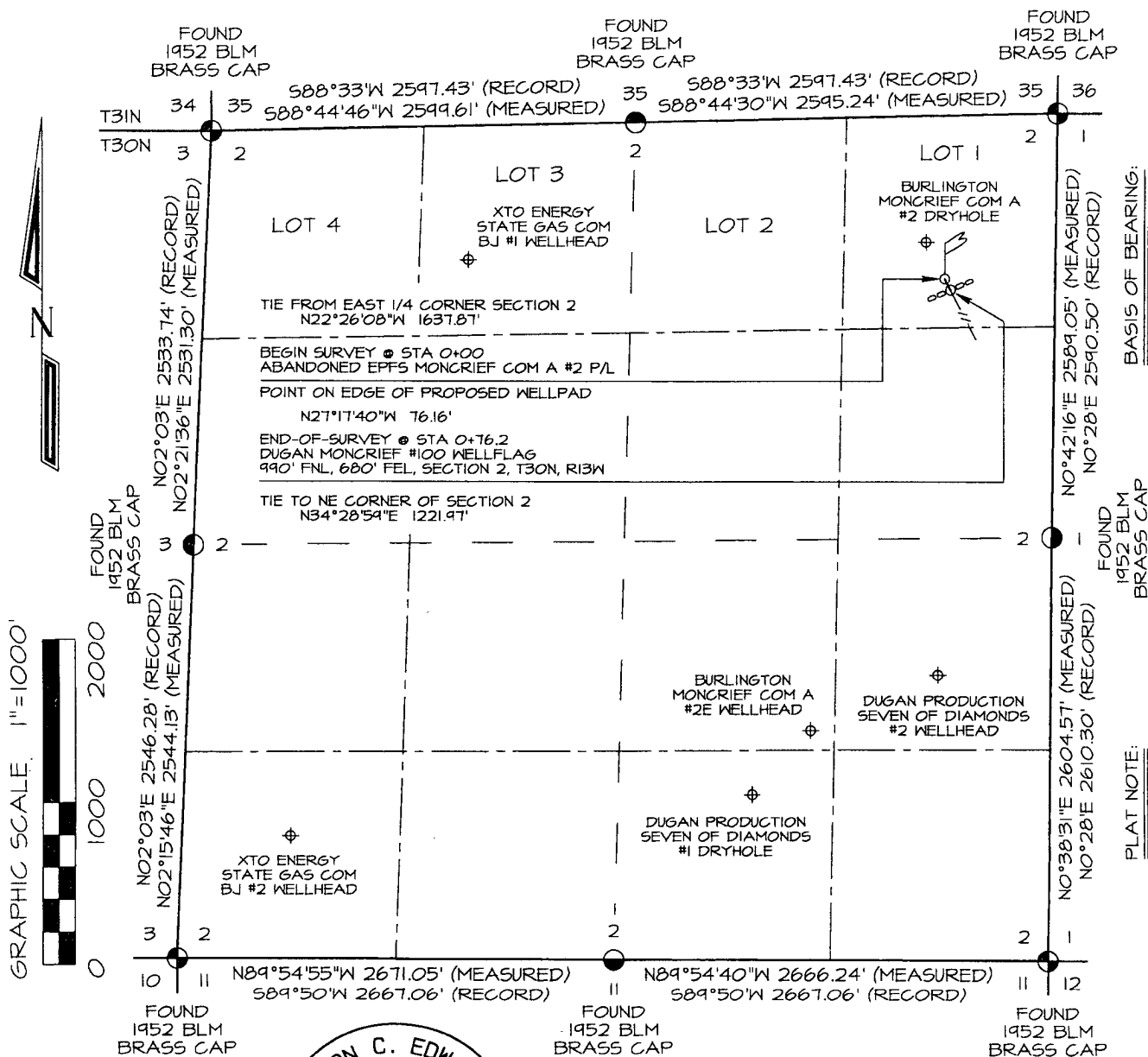


Steel T-Posts have been set to define the Edge of Disturbance limits which are 50' offset from the edge of the staked wellpad.



Note: Contractor should call One-Call for location of any marked or unmarked buried pipelines or cables on well pad and/or access road at least two (2) working days prior to construction

**DUGAN PRODUCTION CORPORATION MONCRIEF #100  
PROPOSED PIPELINE SURVEY LOCATED IN THE  
NE/4 NE/4 OF SECTION 2, T30N, R13W, NMPM.  
SAN JUAN COUNTY, NEW MEXICO**

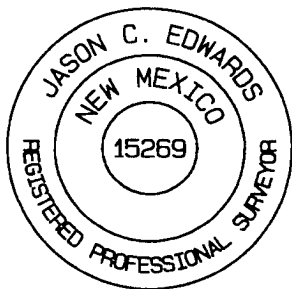


REAL-TIME KINEMATIC GPS SURVEY  
SOLUTION OBTAINED FROM SATELLITES  
TRACKED ON MARCH 8, 2011 FROM A  
REFERENCE STATION POSITIONED IN  
NW/4 NE/4 OF SECTION 2, T30N, R13W

BASIS OF BEARING:

BEFORE ANY CONSTRUCTION BEGINS,  
CONTRACTOR IS ADVISED TO CALL  
ONE-CALL FOR LOCATION OF ANY  
MARKED OR UNMARKED PIPELINES OR  
CABLES IN THE AREA OF THE PROJECT

PLAT NOTE:



~ SURFACE OWNERSHIP ~ State of New Mexico Land	
0+00 TO 0+76.2	76.2 FT / 4.6 RODS

I, Jason C. Edwards, a registered Professional Surveyor under the laws of the State of New Mexico, hereby certify that this plat was prepared from field notes of an actual survey meeting the minimum requirements of the standards for easement surveys and is true and correct to the best of my knowledge and belief.

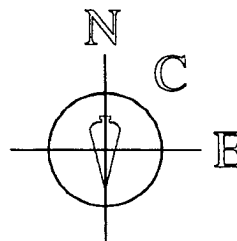
**JASON C. EDWARDS**

Date: March 28, 2011

Jason C. Edwards, P.L.S.  
New Mexico L.S. #15269

Prepared for:

DUGAN PRODUCTION  
P.O. BOX #420  
FARMINGTON, NM 87499



**SURVEYS, INC.**

**Land Surveyor:**  
Jason C. Edwards  
**Mailing Address:**  
Post Office Box 6612  
Farmington, NM 87499  
**Business Address:**  
111 East Pinon Street  
Farmington, NM 87402  
(505) 325-2654 (Office)  
(505) 326-5650 (Fax)

SHEET 3 OF 4  
FILENAME: 30132AG2  
CHECKED BY: JCE  
DRAWN BY: SLE

DUGAN PRODUCTION CORPORATION MONCRIEF #100

990' FNL & 680' FEL, SECTION 2, T30N, R13W, N.M.P.M.  
SAN JUAN COUNTY, NEW MEXICO

