

**UNITED STATES
DEPARTMENT OF THE INTERIOR
BUREAU OF LAND MANAGEMENT**

RECEIVED

APR 05 2011

Sundry Notices and Reports on Wells

Farmington Field Office
Bureau of Land Management

1. Type of Well
GAS

2. Name of Operator

ConocoPhillips

3. Address & Phone No. of Operator

PO Box 4289, Farmington, NM 87499 (505) 326-9700

4. Location of Well, Footage, Sec., T, R, M

Unit C (NENW), 890' FNL & 1980' FWL, Section 28, T25N, R4W, NMPM

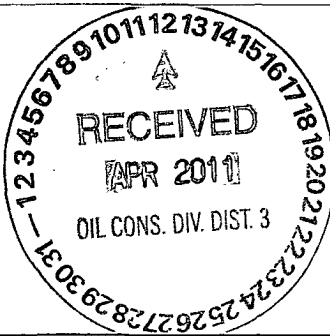
5. Lease Number
Jicarilla Apache 66
6. If Indian, All. or
Tribe Name
Jicarilla Apache
7. Unit Agreement Name

8. Well Name & Number
Jicarilla 28 8

9. API Well No.
30-039-20184

10. Field and Pool
Lindrith West Gallup DK

11. County and State
Rio Arriba, NM



12. CHECK APPROPRIATE BOX TO INDICATE NATURE OF NOTICE, REPORT, OTHER DATA

Type of Submission

☒ Notice of Intent

☐ Subsequent Report

☐ Final Abandonment

Type of Action

☒ Abandonment

☐ Recompletion

☐ Plugging

☐ Casing Repair

☐ Altering Casing

☐ Change of Plans

☐ New Construction

☐ Non-Routine Fracturing

☐ Water Shut off

☐ Conversion to Injection

☐ Other --

13. Describe Proposed or Completed Operations

BP ConocoPhillips Company requests permission to P&A the subject well per the attached procedure, current and proposed wellbore schematic.

14. I hereby certify that the foregoing is true and correct.

Signed Crystal Tafoya Crystal Tafoya

Title Staff Regulatory Technician

Date 4/5/11

(This space for Federal or State Office use)

APPROVED BY Original Signed: Stephen Mason Title _____

Date APR 08 2011

CONDITION OF APPROVAL, if any:

Title 18 U.S.C. Section 1001, makes it a crime for any person knowingly and willfully to make any department or agency of the United States any false, fictitious or fraudulent statements or representations as to any matter within its jurisdiction.

NMOCD

A/

ConocoPhillips
JICARILLA 28 8
Expense - P&A

Lat 36° 22' 32.304" N

Long 107° 15' 33.912" W

*****NOTE: There is a plunger downhole. Set 3-slip-stop before pulling tubing.*****

PROCEDURE

Note: This project requires a NMOCD C-144 CLEZ Closed-Loop System Permit for the use of a steel tank to handle waste fluids circulated from the well and cement wash up.

1. Hold pre-job safety meeting. Comply with all NMOCD, BLM, and COPC safety and environmental regulations. Install and test location rig anchors prior to moving rig in.
2. MOL and RU daylight pulling unit. Conduct safety meeting for all personnel on location. Record casing, tubing, and bradenhead pressures in Wellview.
3. RU blow lines from casing valves and begin blowing down casing pressure. Kill well with water as necessary (at least pump tubing capacity of water down the tubing).
4. ND wellhead and NU BOP. Function test BOP.
5. TOOH with tubing (details below).

Number	Description
1	2-3/8", 4.7#, J-55, EUE, Tubing Joint
1	2-3/8" Pup Joint (10.1')
2	2-3/8" Pup Joints (4.1')
240	2-3/8", 4.7#, J-55, EUE, Tubing Joints
1	2-3/8" Pup Joint (2.1')
1	2-3/8", 4.7#, J-55, EUE, Tubing Joint
1	2-3/8" F-Nipple (ID 1.780")
1	2-3/8" Mule Shoe Guide with Expendable Check

6. Run CBL from top of DK perforations to surface. Call Production Engineer to confirm cement plug depths.

Note: All cement volumes use 100% excess outside pipe and 50' excess inside pipe. The stabilizing wellbore fluid will be 8.3 ppg, sufficient to balance all exposed formation pressures. All cement will be ASTM Type II (Class B) mixed at 15.6 ppg with a 1.18 cf/sk yield. **Plug depths may change per CBL.**

6242

7. Plug #1 (Gallup/Dakota perforations & formation top, 6,620' - 6,520'): RIH and set CR at 6,620'. Pressure test tubing to 1000 psi. Load casing with water and attempt to establish circulation. Mix 47 sx Class B cement and spot inside the casing above CR to isolate the Gallup perforations and formation top. WOC. Tag cement. Circulate well clean with water. Pressure test casing to 800 psi. If casing does not test, then spot and tag subsequent plugs as necessary.

8. Plug #2 (Mesaverde formation top, 4,988' - 4,888'): Mix 17 sx Class B cement and spot a balanced cement plug inside casing to isolate the Mesaverde formation top. PUH.

✓ **8. Plug #3 (Chacra formation top, 4,115' - 4,215'):** Mix 17 sx Class B cement and spot a balanced cement plug inside casing to isolate the Chacra formation top. PUH.

✓ **9. Plug #4 (Pictured Cliffs formation top, 3,332' - 3,232'):** Perforate 3 HSC holes at 3,232'. Set a cement retainer at 3,282'. Sting into CR and establish injection rate into squeeze holes. Mix 47 sx Class B cement. Sqz 30 sx Class B cement into HSC holes and leave 6 sx cement below the retainer, inside the casing. Sting out of CR and spot 11 sx cement above retainer and inside casing to isolate the Pictured Cliffs formation top. PUH.

3163

✓ **8. Plug #5 (Fruitland Coal & Ojo Alamo formation tops, 3,000' - 2,703'):** Mix 40 sx Class B cement and spot a balanced cement plug inside casing to isolate the Fruitland Coal & Ojo Alamo formation tops. PUH.

98 98

✓ **10. Plug #6 (Nacimientio formation top, 1,466' - 1,366'):** Perforate 3 HSC holes at 1,466'. Set a cement retainer at 1,416'. Sting into CR and establish injection rate into squeeze holes. Mix 47 sx Class B cement. Sqz 30 sx Class B cement into HSC holes and leave 6 sx cement below the retainer and inside casing. Sting out of CR and spot 11 sx cement above retainer and inside casing to isolate the Nacimientio formation top. TOOH and LD tubing.

11. Plug #7 (Surface casing shoe and surface plug, 288' - Surface): Perforate 3 HSC holes at 288'. Establish circulation out bradenhead with water and circulate BH annulus clean. Mix 79 sx Class B cement and pump down production casing to circulate good cement out bradenhead. Shut in well and WOC.

12. Nipple down BOP and cut off casing below the casing flange. Install P&A marker with cement to comply with regulations. Rig down, move off location, cut off anchors, and restore location to its natural state.

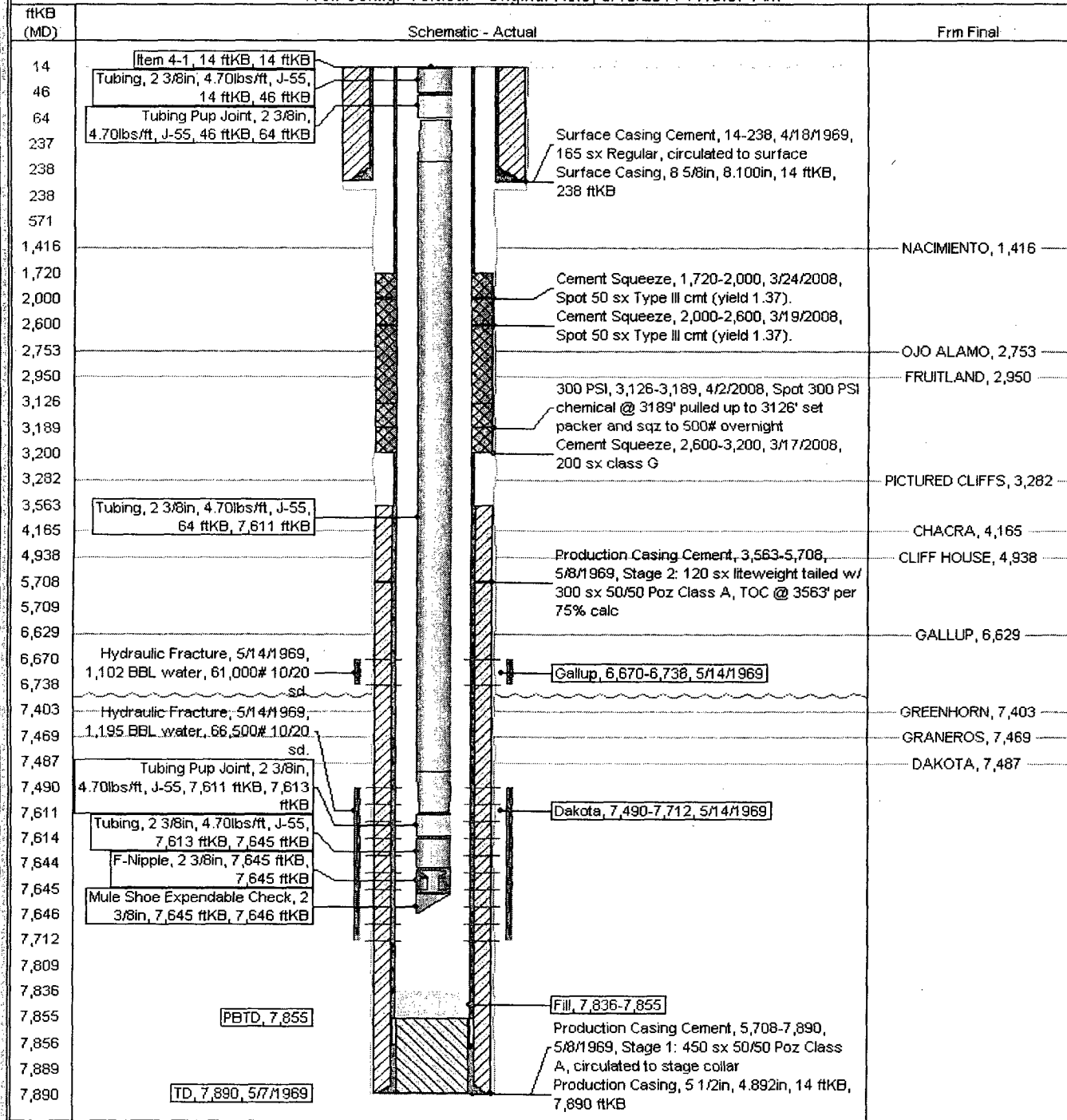
Current Schematic

ConocoPhillips

Well Name: JICARILLA 28 #8

API / UWI	Surface Legal Location	Field Name	License No.	State / Province	Well Configuration Type	Edit
3003920184	NMPM-25N-04VV-28-C	GL/DK COM		NEW MEXICO	Vertical	
Ground Elevation (ft)	Original KB/RT Elevation (ft)	KB-Ground Distance (ft)	KB-Casing Flange Distance (ft)	KB-Tubing Hanger Distance (ft)		
7,006.00	7,020.00	14.00	14.00	14.00		

Well Config: Vertical - Original Hole, 3/16/2011 7:15:07 AM



Current Schematic

ConocoPhillips

Well Name: JICARILLA 28 #8

API / UWI	Surface Legal Location	Field Name	License No.	State/Province	Well Configuration Type	Edit
3003920184	NMPM-25N-04VV-28-C	GL/DK COM		NEW MEXICO	Vertical	
Ground Elevation (ft)	Original KB/RT Elevation (ft)	KB-Ground Distance (ft)	KB-Casing Flange Distance (ft)	KB-Tubing Hanger Distance (ft)		
7,006.00	7,020.00	14.00	14.00	14.00		

Well Config: Vertical - Original Hole, 1/1/2020 1:00:00 PM

ftKB (MD)	Schematic - Actual	Frm Final
14		
64		
238		
288		
1,366		
1,417		NACIMIENTO, 1,416
1,720		
2,600		
2,753		OJO ALAMO, 2,753
3,000		FRUITLAND, 2,950
3,189		
3,232		
3,283		PICTURED CLIFFS, 3,282
3,563		
4,165		CHACRA, 4,165
4,888		
4,988		CLIFF HOUSE, 4,938
5,709		
6,620		
6,629		GALLUP, 6,629
6,738		
7,469		GREENHORN, 7,403
7,490		GRANEROS, 7,469
7,614		DAKOTA, 7,487
7,645		
7,712		
7,836		
7,856		
7,890		

**UNITED STATES DEPARTMENT OF THE INTERIOR
BUREAU OF LAND MANAGEMENT
FARMINGTON DISTRICT OFFICE
1235 LA PLATA HIGHWAY
FARMINGTON, NEW MEXICO 87401**

Attachment to notice of
Intention to Abandon:

Re: Permanent Abandonment
Well: 8 Jicarilla 28

CONDITIONS OF APPROVAL

1. Plugging operations authorized are subject to the attached "General Requirements for Permanent Abandonment of Wells on Federal and Indian Lease."
2. Farmington Office is to be notified at least 24 hours before the plugging operations commence (505) 599-8907.
3. The following modifications to your plugging program are to be made:
 - a) Bring the top of the Dakota/Gallup plug to 6242'.
 - b) Place the Fruitland/Kirtland/Ojo Alamo plug from 3163' – 2703'.
 - c) Place the Nacimiento plug from 1498' – 1398' inside and outside the 5 ½" casing.

You are also required to place cement excesses per 4.2 and 4.4 of the attached General Requirements.

Office Hours: 7:45 a.m. to 4:30 p.m.