

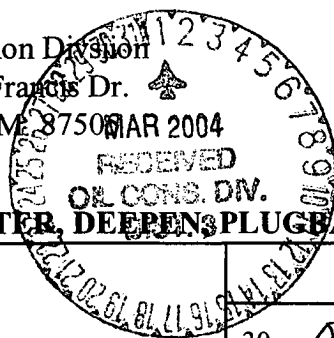
District I  
1525 N. French Dr., Hobbs, NM 88240  
District II  
811 S. 1st Street, Artesia, NM 88210  
District III  
1000 Rio Brazos Rd., Aztec, NM 87410  
District IV  
1220 S. St. Francis Dr., Santa Fe, NM 87505

State of New Mexico  
Energy, Minerals & Natural Resources

Form C-101  
Revised March 17, 1999

Oil Conservation Division  
1220 S. St. Francis Dr.  
Santa Fe, NM 87505

Submit to appropriate District Office  
State Lease - 6 Copies  
Fee Lease - 5 Copies



☒ AMENDED REPORT

APPLICATION FOR PERMIT TO DRILL, RE-ENTER, DEEPEN, PLUG BACK, OR ADD A ZONE

<sup>1</sup> Operator Name and Address <b>XTO Energy Inc.</b> <b>2700 Farmington Ave., Bldg. K. Ste 1</b>		<sup>2</sup> OGRID Number <b>167067</b>
<sup>4</sup> Property Code <b>26050</b>	<sup>5</sup> Property Name <b>Aztec Com 4</b>	<sup>6</sup> Well No. <b>#2</b>

<sup>7</sup> Surface Location

UL or lot no.	Section	Township	Range	Lot. Idn	Feet from the	North/South Line	Feet from the	East/West line	County
<b>N</b>	<b>16</b>	<b>30N</b>	<b>11W</b>		<b>540</b>	<b>South</b>	<b>2020</b>	<b>West</b>	<b>San Juan</b>

<sup>8</sup> Proposed Bottom Hole Location If Different From Surface

UL or lot no.	Section	Township	Range	Lot. Idn	Feet from the	North/South Line	Feet from the	East/West line	County
<sup>9</sup> Proposed Pool 1 <b>Basin Dakota</b>					<sup>10</sup> Proposed Pool 2 <b>Blanco Mesaverde</b>				

<sup>11</sup> Work Type Code <b>N</b>	<sup>12</sup> Well Type Code <b>G</b>	<sup>13</sup> Cable/Rotary <b>R</b>	<sup>14</sup> Lease Type Code <b>S</b>	<sup>15</sup> Ground Level Elevation <b>5,685' Ground Level</b>
<sup>16</sup> Multiple <b>Yes</b>	<sup>17</sup> Proposed Depth <b>6,950'</b>	<sup>18</sup> Formation <b>Dakota</b>	<sup>19</sup> Contractor <b>Aztec Well Service</b>	<sup>20</sup> Spud Date <b>Summer, 2004</b>

<sup>21</sup> Proposed Casing and Cement Program

Hole Size	Casing Size	Casing weight/foot	Setting Depth	Sacks of Cement	Estimated TOC
<b>12-1/4"</b>	<b>8-5/8"</b>	<b>24.0 #/ft</b>	<b>400'</b>	<b>280 sx</b>	<b>Surface</b>
<b>7-7/8"</b>	<b>4-1/2"</b>	<b>10.5 #/ft</b>	<b>6,950'</b>	<b>1,175 sx</b>	<b>Surface</b>

<sup>22</sup> Describe the proposed program. If this application is to DEEPEN or PLUG BACK, give the data on the present productive zone and proposed new productive zone. Describe the blowout prevention program, if any. Use additional sheets if necessary.

Drl to 400' Run new 8-5/8" csg. Cmt csg w/280 sx Type III cmt (14.5 ppg, 1.39 cuft/sx) w/2% CaCl & 1/4# Celloflake. Attempt to circ cmt to surface. NU BOP. Test BOP. Mix mud. Drill ahead w/7-7/8 hole.

Drl to TD (@ 6,950'). Log well. Run new 4-1/2" csg to btm. Cmt csg with approx 1,025 sx Premium Lite cmt (65% cmt, 35% Poz, 6% gel) w/1/4# celloflake @ 12.5 ppg, 2.07 cuft/sx followed by 150 sx cl "H" cmt (neat) @ 15.6 ppg, 1.18 cuft/sx. Attempt to circ cmt to surface.

See enclosed drawing for BOP stack configuration.

<sup>23</sup> I hereby certify that the information given above is true and complete to the best of my knowledge and belief.		OIL CONSERVATION DIVISION	
Signature: <i>Jeffrey W. Patton</i> 2/25/04		Approved by: <i>[Signature]</i>	
Printed name: <b>Jeffrey W. Patton</b>		Title: <b>DEPUTY OIL &amp; GAS INSPECTOR, DIST. #2</b>	
Title: <b>Drilling Engineer</b>		Approval Date: <b>MAR - 1 2004</b> Expiration Date: <b>MAR - 1 2005</b>	
Date:	Phone:	Conditions of Approval:	
		Attached <input type="checkbox"/>	

HOLD COPY FOR NGL

DISTRICT I  
1625 N. French Dr., Hobbs, N.M. 88240

DISTRICT II  
811 South First, Artesia, N.M. 88210

DISTRICT III  
1000 Rio Brazos Rd., Aztec, N.M. 87410

DISTRICT IV  
2040 South Pacheco, Santa Fe, NM 87505

State of New Mexico  
Energy, Minerals & Natural Resources Department

Form C-102  
Revised August 15, 2000

OIL CONSERVATION DIVISION

2040 South Pacheco  
Santa Fe, NM 87505

REC'D / SAN JUAN

Submit to Appropriate District Office  
State Lease - 4 Copies  
Fee Lease - 3 Copies

AUG 29 2003

☐ AMENDED REPORT

WELL LOCATION AND ACREAGE DEDICATION PLAT

<sup>1</sup> API Number 30-045-32194	<sup>2</sup> Pool Code 71599	<sup>3</sup> Pool Name Basin Dakota
<sup>4</sup> Property Code 26050	<sup>5</sup> Property Name AZTEC COM 4	<sup>6</sup> Well Number 2
<sup>7</sup> GRID No. 1107067	<sup>8</sup> Operator Name XTO ENERGY INC.	<sup>9</sup> Elevation 5685'

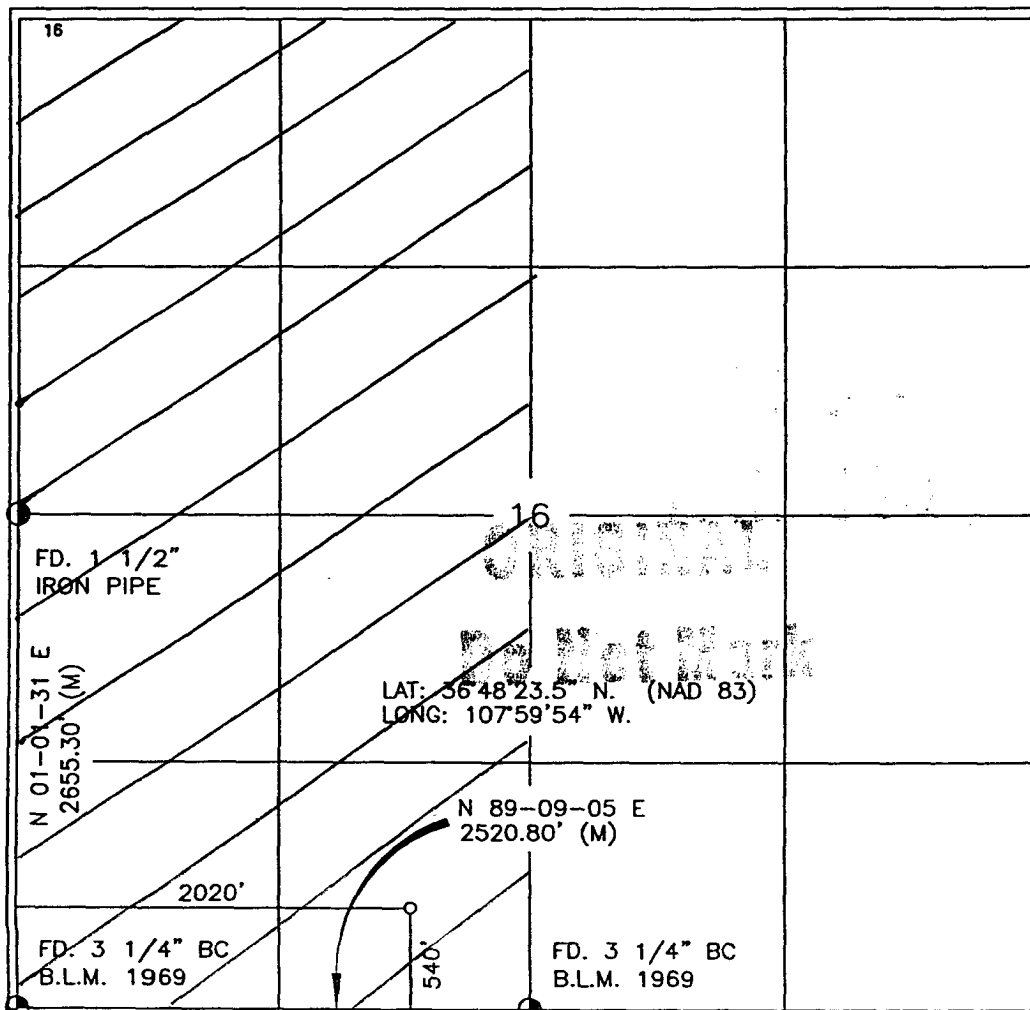
<sup>10</sup> Surface Location

UL or lot no.	Section	Township	Range	Lot Idn	Feet from the	North/South line	Feet from the	East/West line	County
N	16	30-N	11-W		540'	SOUTH	2020'	WEST	SAN JUAN

<sup>11</sup> Bottom Hole Location If Different From Surface

UL or lot no.	Section	Township	Range	Lot Idn	Feet from the	North/South line	Feet from the	East/West line	County
<sup>12</sup> Dedicated Acres 320 W/2			<sup>13</sup> Joint or Infill I		<sup>14</sup> Consolidation Code		<sup>15</sup> Order No. NSL-4475-A		

NO ALLOWABLE WILL BE ASSIGNED TO THIS COMPLETION UNTIL ALL INTERESTS HAVE BEEN CONSOLIDATED  
OR A NON-STANDARD UNIT HAS BEEN APPROVED BY THE DIVISION



17 OPERATOR CERTIFICATION

I hereby certify that the information contained herein  
is true and complete to the best of my knowledge and  
belief

Heely K Small  
Signature  
Heely K Small  
Printed Name  
Drilling Assistant  
Title  
9/2/03  
Date

18 SURVEYOR CERTIFICATION

I hereby certify that the well location shown on this plat  
was plotted from field notes of actual surveys made by  
me or under my supervision, and that the same is true  
and correct to the best of my belief.

8-28-03  
Date of Survey  
DAVID A. JOHNSON  
Signature and Seal of Professional Surveyor  
14827  
Certificate Number

DISTRICT I  
1625 N. French Dr., Hobbs, N.M. 88240

DISTRICT II  
811 South First, Artesia, N.M. 88210

DISTRICT III  
1000 Rio Brazos Rd., Aztec, N.M. 87410

DISTRICT IV  
2040 South Pacheco, Santa Fe, NM 87505

State of New Mexico  
Energy, Minerals & Natural Resources Department

Form C-102  
Revised August 15, 2000

OIL CONSERVATION DIVISION  
2040 South Pacheco  
Santa Fe, NM 87505  
**REC'D / SAN JUAN**

Submit to Appropriate District Office  
State Lease - 4 Copies  
Fee Lease - 3 Copies

AUG 29 2003

☐ AMENDED REPORT

WELL LOCATION AND ACREAGE DEDICATION PLAT

<sup>1</sup> API Number 30-045-32194		<sup>2</sup> Pool Code 72319		<sup>3</sup> Pool Name Blanco Mesaverde	
<sup>4</sup> Property Code 26050		<sup>5</sup> Property Name AZTEC COM 4			<sup>6</sup> Well Number 2
<sup>7</sup> GRID No. 1107067		<sup>8</sup> Operator Name XTO ENERGY INC.			<sup>9</sup> Elevation 5685'

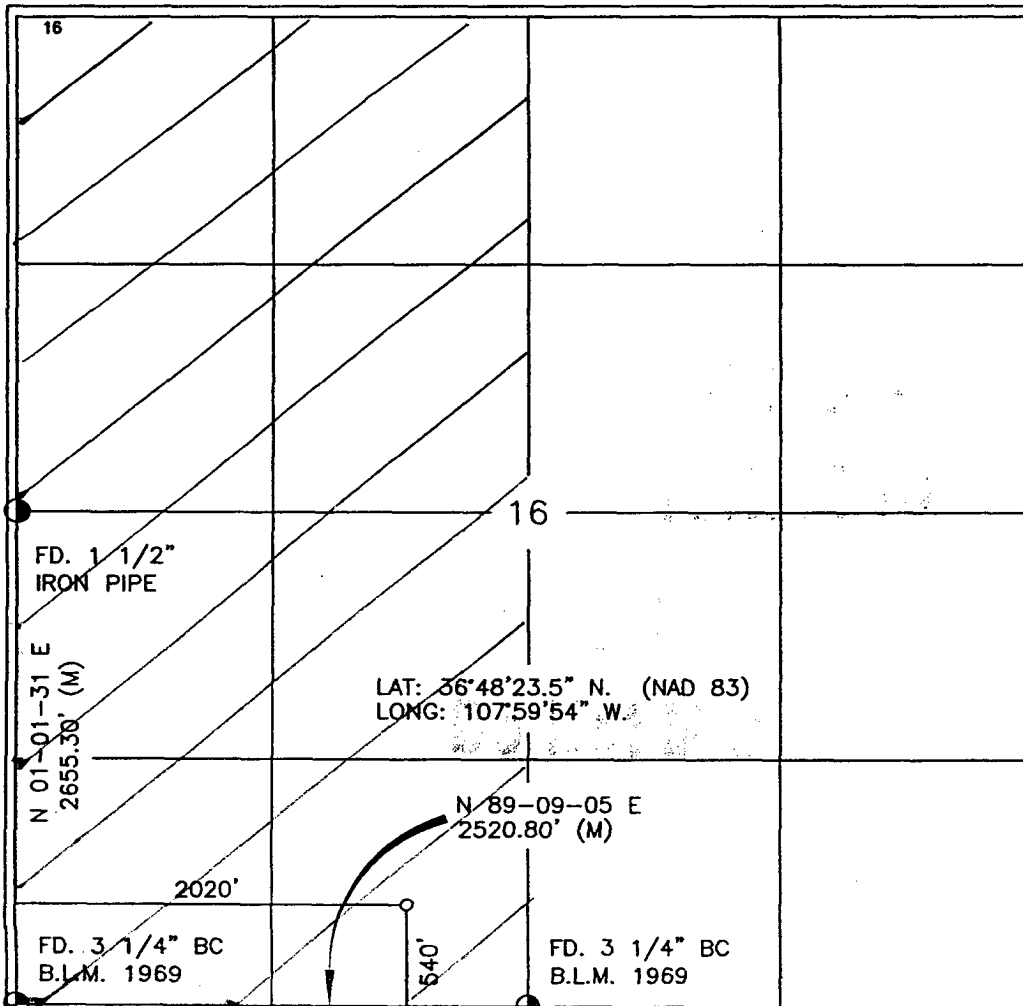
<sup>10</sup> Surface Location

UL or lot no.	Section	Township	Range	Lot Idn	Feet from the	North/South line	Feet from the	East/West line	County
N	16	30-N	11-W		540'	SOUTH	2020'	WEST	SAN JUAN

<sup>11</sup> Bottom Hole Location If Different From Surface

UL or lot no.	Section	Township	Range	Lot Idn	Feet from the	North/South line	Feet from the	East/West line	County
<sup>12</sup> Dedicated Acres 320 W 1/2			<sup>13</sup> Joint or Infill I		<sup>14</sup> Consolidation Code		<sup>15</sup> Order No. NSL-4475-A		

NO ALLOWABLE WILL BE ASSIGNED TO THIS COMPLETION UNTIL ALL INTERESTS HAVE BEEN CONSOLIDATED  
OR A NON-STANDARD UNIT HAS BEEN APPROVED BY THE DIVISION



17 OPERATOR CERTIFICATION

I hereby certify that the information contained herein  
is true and complete to the best of my knowledge and  
belief

*David K Small*  
Signature  
David K Small  
Printed Name  
Drilling Assistant  
Title  
9/2/03  
Date

18 SURVEYOR CERTIFICATION

I hereby certify that the well location shown on this plat  
was plotted from field notes of actual surveys made by  
me or under my supervision, and that the same is true  
and correct to the best of my belief.

8-28-03  
Date of Survey  
DAVID A. JOHNSON  
Signature and Seal of Professional Surveyor:  
NEW MEXICO  
REGISTERED PROFESSIONAL SURVEYOR  
14827  
Certificate Number

# BOP SCHEMATIC FOR DRILLING OPERATIONS CLASS 1 (2M) NORMAL PRESSURE

## TESTING PROCEDURE

### 1. Test BOP after installation:

Pressure test BOP to 200-300  
psig (low pressure) for 5 min.

Test BOP to Working Press or  
to 70% internal yield of surf csg  
(10 min).

### 2. Test operation of (both) rams on every trip.

### 3. Check and record Accumulator pressure on every tour.

### 4. Re-pressure test BOP stack after changing out rams.

### 5. Have kelly cock valve with handle available.

### 6. Have safety valve and subs to fit all sizes of drill string.

