

District I  
1625 N. French Dr., Hgbs, NM 88240  
District II  
1301 W. Grand Avenue, Artesia, NM 88210  
District III  
1000 Rio Brazos Road, Aztec, NM 87410  
District IV  
1220 S. St. Francis Dr., Santa Fe, NM 87505

State of New Mexico  
Energy Minerals and Natural Resources

Form C-101  
Revised June 10, 2003

Oil Conservation Division  
1220 South St. Francis Dr.  
Santa Fe, NM 87505

Submit to appropriate District Office  
State Lease - 6 Copies  
Fee Lease - 5 Copies

☐ AMENDED REPORT

**APPLICATION FOR PERMIT TO DRILL, RE-ENTER, DEEPEN, PLUGBACK, OR ADD A ZONE**

<sup>1</sup> Operator Name and Address WEST LARGO CORP. 8801 S. Yale, Suite 240 Tulsa, OK 74137-3535		<sup>2</sup> OGRID Number
<sup>3</sup> Property Code 14168		<sup>3</sup> API Number 30 - 045 - 32195
<sup>5</sup> Property Name CROCKETT 25		<sup>6</sup> Well No. 14

**7 Surface Location**

UL or lot no.	Section	Township	Range	Lot Idn	Feet from the	North/South line	Feet from the	East/West line	County
D	25	29N	10W		980'	North	1310'	West	San Juan

**8 Proposed Bottom Hole Location If Different From Surface**

UL or lot no.	Section	Township	Range	Lot Idn	Feet from the	North/South line	Feet from the	East/West line	County

<sup>9</sup> Proposed Pool 1 Basin Fruitland Coal	<sup>10</sup> Proposed Pool 2
--	-------------------------------

<sup>11</sup> Work Type Code N	<sup>12</sup> Well Type Code G	<sup>13</sup> Cable/Rotary R	<sup>14</sup> Lease Type Code P	<sup>15</sup> Ground Level Elevation 5521'
<sup>16</sup> Multiple N	<sup>17</sup> Proposed Depth 2174'	<sup>18</sup> Formation Lewis	<sup>19</sup> Contractor D & D Service	<sup>20</sup> Spud Date 3/ 3/4/04

**21 Proposed Casing and Cement Program**

Hole Size	Casing Size	Casing weight/foot	Setting Depth	Sacks of Cement	Estimated TOC
8.75"	7"	20#	200'	55	Surface
6.25"	4.5"	10.5#	2074'	180	Surface
* 12 1/4"	9 5/8"		40'	-	-

<sup>22</sup> Describe the proposed program. If this application is to DEEPEN or PLUG BACK, give the data on the present productive zone and proposed new productive zone. Describe the blowout prevention program, if any. Use additional sheets if necessary. Drill 8-3/4" hole to 200' using fresh water mud. Run & cement surface casing to surface. WOC 12 hours. Nipple up 7-1/16" 3M BOPE. Pressure test surface casing & BOPE to minimum of 600 psig for 15 minutes. Drill 6-1/4" hole to TD using polymer and water. Log well. Run production casing and cement to surface in a single stage. Move out drilling rig. Move in completion equipment. Run cased hole correlation logs. Test production casing to 3500 psig for 15 minutes. Perforate select Fruitland Coal intervals and stimulate with a foamed KCL water based fluid and sand. Install production equipment, 2-3/8" tubing, and gas sales meter. **WE PLAN TO RUN 40' OF UNCEMENTED 9 5/8" CONDUCTOR PIPE.**

<sup>23</sup> I hereby certify that the information given above is true and complete to the best of my knowledge and belief. Signature: <i>Mike Pippin</i> Printed name: Mike Pippin Title: Agent - Petr. Engr. E-mail Address: mpippin@ddbroadband.com Date: March 3, 2004		<b>OIL CONSERVATION DIVISION</b> Approved by: <i>[Signature]</i> Title: DEPUTY OIL & GAS INSPECTOR, DIST. #8 Approval Date: MAR - 3 2004 Expiration Date: MAR - 3 2005 Conditions of Approval: Attached <input type="checkbox"/>	
--	--	--	--

PO Box 1980, Hobbs, NM 88241-1980

District II  
PO Drawer DD, Artesia, NM 88211-0719

District III  
1000 Rio Brazos Rd., Aztec, NM 87410

District IV  
PO Box 2088, Santa Fe, NM 87504-2088

Energy, Minerals & Natural Resources Department

**OIL CONSERVATION DIVISION**  
PO Box 2088  
Santa Fe, NM 87504-2088

Revised February 21, 1994

Instructions on back  
Submit to Appropriate District Office  
State Lease - 4 Copies  
Fee Lease - 3 Copies

☐ AMENDED REPORT

**WELL LOCATION AND ACREAGE DEDICATION PLAT**

*API Number <b>30-015-37195</b>		*Pool Code <b>71629</b>	*Pool Name <b>BASIN FRUITLAND COAL</b>
*Property Code <b>14168</b>	*Property Name <b>CROCKETT 25</b>		*Well Number <b>1X 14</b>
*GRID No. <b>37197</b>	*Operator Name <b>WEST LARGO CORPORATION</b>		*Elevation <b>5521'</b>

**10 Surface Location**

UL or lot no.	Section	Township	Range	Lot 1ch	Feet from the	North/South line	Feet from the	East/West line	County
<b>D</b>	<b>25</b>	<b>29N</b>	<b>10W</b>		<b>980'</b>	<b>NORTH</b>	<b>1310</b>	<b>WEST</b>	<b>SAN JUAN</b>

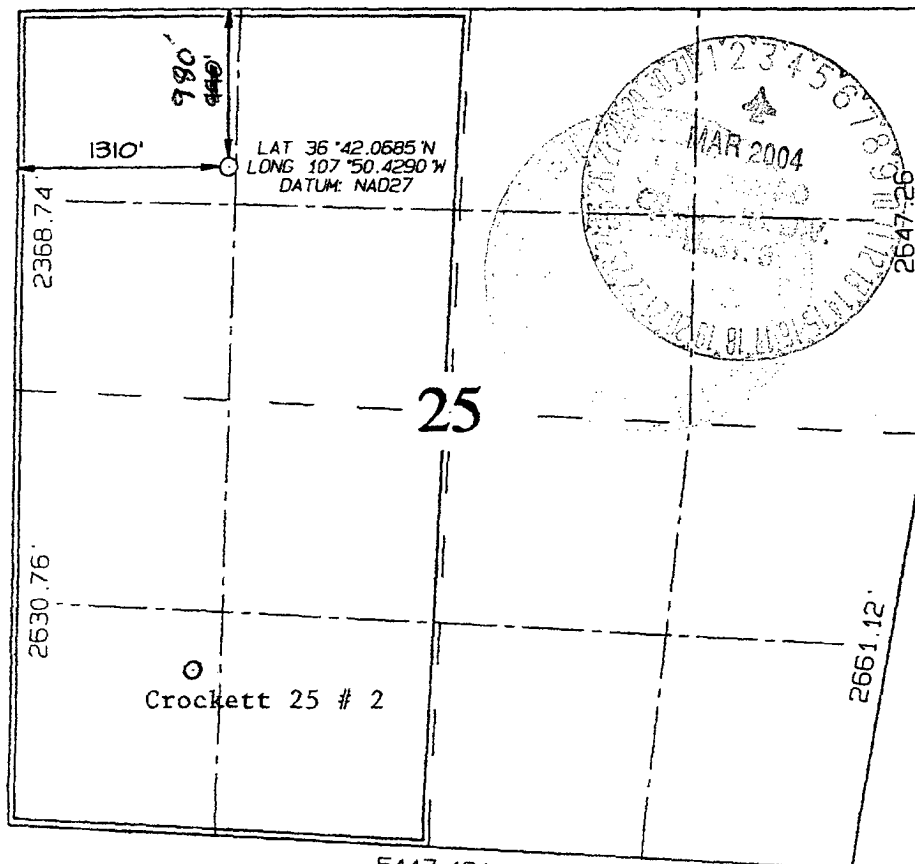
**11 Bottom Hole Location If Different From Surface**

UL or lot no.	Section	Township	Range	Lot 1ch	Feet from the	North/South line	Feet from the	East/West line	County

*Dedicated Acres <b>320.0 Acres - W/2</b>	*Joint or Infill <b>Y</b>	*Consolidation Code	*Order No.
--	------------------------------	---------------------	------------

NO ALLOWABLE WILL BE ASSIGNED TO THIS COMPLETION UNTIL ALL INTERESTS HAVE BEEN CONSOLIDATED OR A NON-STANDARD UNIT HAS BEEN APPROVED BY THE DIVISION

5495.82'



**17 OPERATOR CERTIFICATION**

I hereby certify that the information contained herein is true and complete to the best of my knowledge and belief.

Signature: *Robert E. Fielder*  
Printed Name: **Robert E. Fielder**  
Title: **Agent**  
Date: **November 17, 2003**

**18 SURVEYOR CERTIFICATION**

I hereby certify that the well location shown on this plat was plotted from field notes of actual surveys made by me or under my supervision and that the same is true and correct to the best of my belief.

Survey Date: **NOVEMBER 7, 2003**

Signature and Seal of Professional Surveyor



**JASON C. EDWARDS**  
Certificate Number: **15269**