

District I
1625 N. French Dr., Hobbs, NM 88240
District II
811 S. 1st Street, Artesia, NM 88210
District III
1000 Rio Brazos Rd., Aztec, NM 87410
District IV
2040 South Pacheco, Santa Fe, NM 87505

State of New Mexico
Energy, Minerals & Natural Resources

Form C-101
Revised March 17, 1999

Oil Conservation Division
2040 South Pacheco
Santa Fe, NM 87505

Submit to appropriate District Office
State Lease - 6 Copies
Fee Lease - 5 Copies

☐ AMENDED REPORT

APPLICATION FOR PERMIT TO DRILL, RE-ENTER, DEEPEN, PLUGBACK, OR ADD A ZONE

¹ Operator Name and Address ENERGEN RESOURCES CORPORATION 2198 Bloomfield Highway		² OGRID Number 162928
⁴ Property Code 33576		³ API Number 30- 045- 32208
⁵ Property Name Tiffany SWD		⁶ Well No. 1

⁷ Surface Location									
UL or lot no.	Section	Township	Range	Lot. Idn	Feet from the	North/South Line	Feet from the	East/West line	County
H	10	32N	6W		725	NORTH	325	EAST	SAN JUAN

⁸ Proposed Bottom Hole Location If Different From Surface									
UL or lot no.	Section	Township	Range	Lot. Idn	Feet from the	North/South Line	Feet from the	East/West line	County
⁹ Proposed Pool 1 Morrison / Bluff / Entrada / Chinle					¹⁰ Proposed Pool 2				

¹¹ Work Type Code Drill	¹² Well Type Code Disposal	¹³ Cable/Rotary Rotary	¹⁴ Lease Type Code Fee	¹⁵ Ground Level Elevation 6194
¹⁶ Multiple No	¹⁷ Proposed Depth 9200'	¹⁸ Formation Chinle	¹⁹ Contractor Aztec Well Service	²⁰ Spud Date 3/20/04

²¹ Proposed Casing and Cement Program					
Hole Size	Casing Size	Casing weight/foot	Setting Depth	Sacks of Cement	Estimated TOC
17 1/2"	13 3/8"	48# H-40	600'	700 Sks	Surface
12 1/4"	9 5/5"	40# N-80	5700'	1660 Sks	3 Stage Circ.
7 7/8"	5 1/2"	17# N-80	9200'	590 Sks	Circ. liner

²² Describe the proposed program. If this application is to DEEPEN or PLUG BACK, give the data on the present productive zone and proposed new productive zone.

Describe the blowout prevention program, if any. Use additional sheets if necessary.

A 13 3/8" 3000# minimum double gate BOP stake will be used with a 2" 3000# choke manifold for intermediate. Equipment will be reduced to 11" BOP stake for production hole. Possible disposal zones will be Bluff, Entrada, and Chinle.

²³ I hereby certify that the information given above is true and complete to the best of my knowledge and belief.

Signature: *Doug Thomas*

Printed name: Doug Thomas

Title: Drilling Superintendent

Date: 3/3/04

Phone: (505) 324-6800

OIL CONSERVATION DIVISION	
Approved by: <i>[Signature]</i>	Title: DEPUTY OIL & GAS INSPECTOR, DIST. #4
Approval Date: MAR - 3 2004	Expiration Date: MAR - 3 2005
Conditions of Approval: SWD order must be granted	
Attached <input type="checkbox"/> by NM OCD Santa Fe	

District I
PO Box 1980, Hobbs, NM 88241-1980

District II
PO Drawer 00, Artesia, NM 88211-0719

District III
1000 Rio Brazos Rd., Aztec, NM 87410

District IV
PO Box 2088, Santa Fe, NM 87504-2088

State of New Mexico
Energy, Minerals & Natural Resources Department

OIL CONSERVATION DIVISION
PO Box 2088
Santa Fe, NM 87504-2088

Form C-102
Revised February 21, 1994

Instructions on back
Submit to Appropriate District Office
State Lease - 4 Copies
Fee Lease - 3 Copies

☐ AMENDED REPORT

WELL LOCATION AND ACREAGE DEDICATION PLAT

*API Number 30-045-32208		*Pool Code 96162	*Pool Name SUP. Morrison Bluff Entrada
*Property Code 33576	*Property Name TIFFANY SWD		*Well Number 1
*GRID No. 162928	*Operator Name ENERGEN RESOURCES CORPORATION		*Elevation 6194

¹⁰ Surface Location

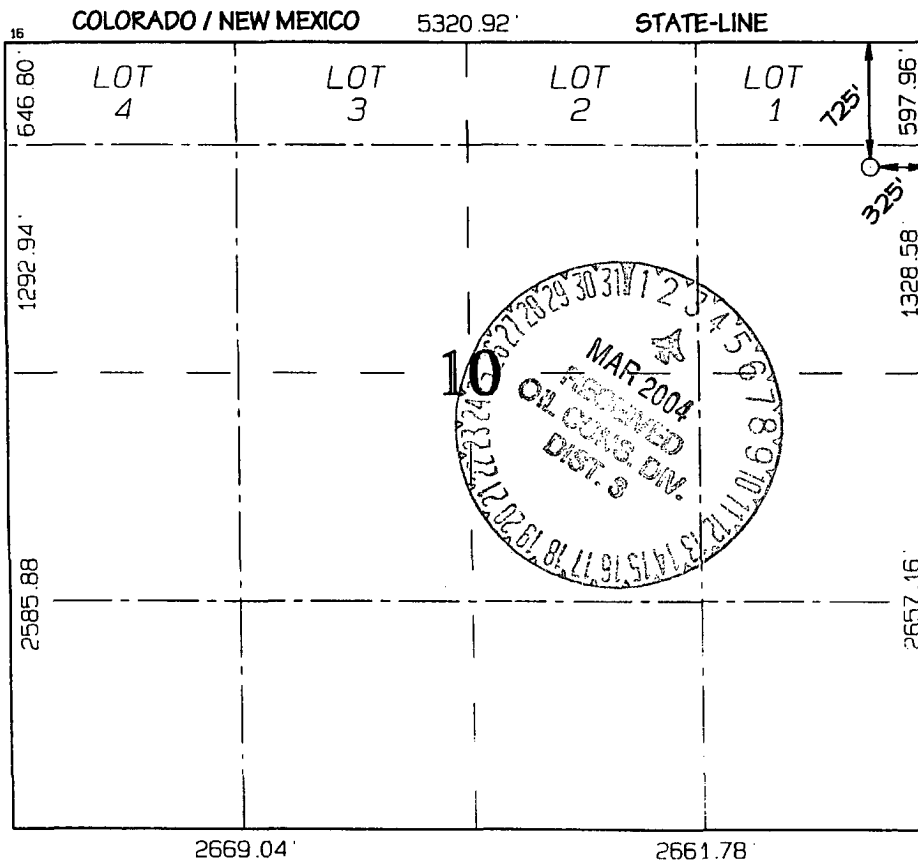
UL or lot no.	Section	Township	Range	Lot Idn	Feet from the	North/South line	Feet from the	East/West line	County
H	10	32N	6W		725	NORTH	325	EAST	SAN JUAN

¹¹ Bottom Hole Location If Different From Surface

UL or lot no.	Section	Township	Range	Lot Idn	Feet from the	North/South line	Feet from the	East/West line	County

¹² Dedicated Acres	¹³ Joint or Infill	¹⁴ Consolidation Code	¹⁵ Order No.

NO ALLOWABLE WILL BE ASSIGNED TO THIS COMPLETION UNTIL ALL INTERESTS HAVE BEEN CONSOLIDATED
OR A NON-STANDARD UNIT HAS BEEN APPROVED BY THE DIVISION



¹⁷ OPERATOR CERTIFICATION

I hereby certify that the information contained herein is true and complete to the best of my knowledge and belief

Doug Thomas
Signature
DOUG THOMAS
Printed Name
Drilling Superintendent
Title
3/3/04
Date

¹⁸ SURVEYOR CERTIFICATION

I hereby certify that the well location shown on this plat was plotted from field notes of actual surveys made by me or under my supervision and that the same is true and correct to the best of my belief

Survey Date: DECEMBER 22, 2003

Signature and Seal of Professional Surveyor

JASON C. EDWARDS
Certificate Number 15269