

NEW MEXICO OIL CONSERVATION COMMISSION
Santa Fe, New Mexico

Form C-101
Revised (12/1/55)

NOTICE OF INTENTION TO DRILL

Notice must be given to the District Office of the Oil Conservation Commission and approval obtained before drilling or recompletion begins. If changes in the proposed plan are considered advisable, a copy of this notice showing such changes will be returned to the sender. Submit this notice in QUINTUPLICATE. One copy will be returned following approval. See additional instructions in Rules and Regulations of the Commission. If State Land submit 6 Copies Attach Form C- 128 in triplicate to first 3 copies of form C-101

DURANGO, COLORADO

8/12/63

(Place)

(Date)

OIL CONSERVATION COMMISSION
SANTA FE, NEW MEXICO

Gentlemen:

You are hereby notified that it is our intention to commence the Drilling of a well to be known as
OBIE SHAW

FERNANDEZ Co.

(Company or Operator)

1-A

N

Well No. _____, in _____, The well is
(Lease) (Unit)

located 975 feet from the SOUTH line and 1830 feet from the
WEST line of Section 8, T. 15N, R. 6W, NMPM.

(GIVE LOCATION FROM SECTION LINE) WILDCAT Pool, McKINLEY County

D	C	B	A
E	F	G	H
L	K	J	I
← 1830' M	→ 975' N	O	P

If State Land the Oil and Gas Lease is No. _____

If patented land the owner is FERNANDEZ Co. (FLOYD LEE)

Address SAN MATEO, NEW MEXICO

We propose to drill well with drilling equipment as follows: ROTARY, SURFACE TO TOTAL DEPTH

The status of plugging bond is BLANKET BOND, PREVIOUSLY FILED IN SANTA FE

Drilling Contractor B. A. DODGEN DRILLING Co.

We intend to complete this well in the HOSPAN MEMBER OF GALLUP FORMATION formation at an approximate depth of 850 feet.

CASING PROGRAM

We propose to use the following strings of Casing and to cement them as indicated:

Size of Hole	Size of Casing	Weight per Foot	New or Second Hand	Depth	Sacks Cement
<u>8 3/4"</u>	<u>7"</u>	<u>24#</u>	<u>USED</u>	<u>60'</u>	<u>20</u>
<u>6 1/4"</u>	<u>4 1/2"</u>	<u>9.5#</u>	<u>NEW</u>	<u>850'</u>	<u>20</u>

If changes in the above plans become advisable we will notify you immediately.

ADDITIONAL INFORMATION (If recompletion give full details of proposed plan of work.)

Approved _____
Except as follows:

8-13, 1963

Sincerely yours,

OBIE SHAW

(Company or Operator)

By W. E. Carr

Position Geologist

Send Communications regarding well to

OBIE SHAW

Name _____

Address 323 VINE ST., EVANSVILLE, INDIANA

OIL CONSERVATION COMMISSION

By A. R. Bendrick

RECEIVED
AUG 13 1963
OIL CON. COM.
DIST. 3

NUMBER OF COPIES RECEIVED	
DISTRIBUTION	
SANTA FE	
FILE	
U.S.G.S.	
LAND OFFICE	
TRANSPORTER	OIL GAS
PRODUCTION OFFICE	
OPERATOR	

NEW MEXICO OIL CONSERVATION COMMISSION
WELL LOCATION AND ACREAGE DEDICATION PLAT
 SEE INSTRUCTIONS FOR COMPLETING THIS FORM ON THE REVERSE SIDE

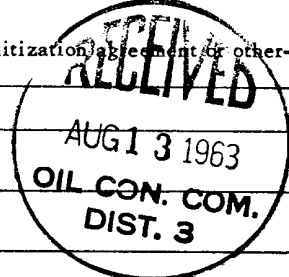
FORM C-128
 Revised 5/1/57

SECTION A

Operator OBIE SHAW		Lease FERNANDEZ Co.		Well No. 1-A
Unit Letter N	Section 8	Township 15N	Range 6W	County McKINLEY
Actual Footage Location of Well: 975 feet from the SOUTH line and 1830 feet from the WEST line				
Ground Level Elev. 6527	Producing Formation WILDCAT	Pool WILDCAT	Dedicated Acreage: 40 Acres	

1. Is the Operator the only owner in the dedicated acreage outlined on the plat below? YES ☒ NO ____ . ("Owner" means the person who has the right to drill into and to produce from any pool and to appropriate the production either for himself or for himself and another. (65-3-29 (e) NMSA 1935 Comp.)
2. If the answer to question one is "no," have the interests of all the owners been consolidated by communitization, agreement or otherwise? YES ____ NO ____ . If answer is "yes," Type of Consolidation ____
3. If the answer to question two is "no," list all the owners and their respective interests below:

Owner	Land Description



SECTION B

<div align="center">(SEE ATTACHED SURVEYOR'S PLAT FOR LOCATION)</div>							

0 330 660 990 1320 1650 1980 2310 2640 2000 1500 1000 500 0

CERTIFICATION

I hereby certify that the information in SECTION A above is true and complete to the best of my knowledge and belief.

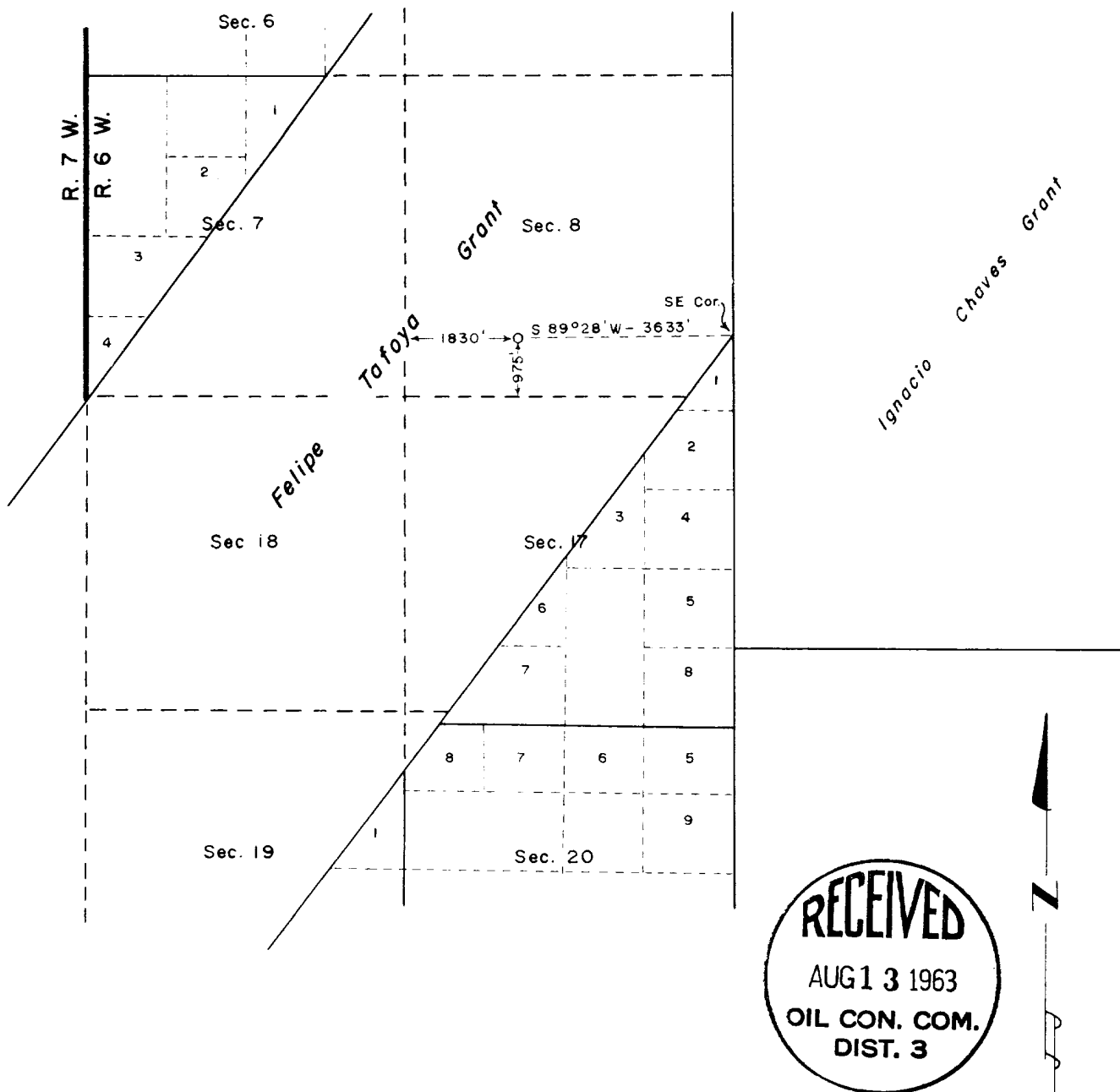
Name W. E. Carr
Position GEOLOGIST
Company OBIE SHAW
323 VINE ST
EVANSVILLE, INDIANA
Date 8/12/63

I hereby certify that the well location shown on the plat in SECTION B was plotted from field notes of actual surveys made by me or under my supervision, and that the same is true and correct to the best of my knowledge and belief.

Date Surveyed
Registered Professional Engineer and/or Land Surveyor
Certificate No.

INSTRUCTIONS FOR COMPLETION OF FORM C-128

1. Operator shall furnish and certify to the information called for in Section A.
2. Operator shall outline the dedicated acreage for *both* oil and gas wells on the plat in Section B.
3. A registered professional engineer or land surveyor registered in the State of New Mexico or approved by the Commission shall show on the plat the location of the well and certify this information in the space provided.
4. All distances shown on the plat must be from the outer boundaries of the Section.
5. If additional space is needed for listing owners and their respective interests as required in question 3 of Section A, please use space below.



WELL LOCATION: Obie Shaw - Fernandez Co. # 1

Located 975 feet North of the South line and 1830 feet East of the West line of Projected Section 8,
 Township 15 North, Range 6 West, New Mexico Principal Meridian.
 Mc Kinley Co., New Mexico
 Existing ground elevation determined at 6527 feet based on adjoining well locations.

I hereby certify the above plat represents a survey
 made under my supervision and that it is accurate
 to the best of my knowledge and belief.

Elmer M. Clark

ELMER M. CLARK
 Registered Land Surveyor
 State of New Mexico #3189

WELL LOCATION PLAT
 Sec. 8 - T. 15 N. - R. 6 W.
 Mc Kinley Co., New Mexico

E.M. CLARK & ASSOC.
 Durango, Colorado

DATE: August 7, 1963
 FILE NO: 63045

NEW MEXICO OIL CONSERVATION COMMISSION

Santa Fe, New Mexico

WELL RECORD

NUMBER OF COPIES RECEIVED	
DISTRIBUTION	
SANTA FE	
FILE	
U.S.G.S.	
LAND OFFICE	
TRANSPORTER	OIL
	GAS
PRORATION OFFICE	
OPERATOR	3

Mail to District Office, Oil Conservation Commission, to which Form C-101 was sent not later than twenty days after completion of well. Follow instructions in Rules and Regulations of the Commission. Submit in QUINTUPLICATE If State Land submit 6 Copies

AREA 640 ACRES
LOCATE WELL CORRECTLY

OBIE SHAW

(Company or Operator)

Fernandes Company

(Lease)

Well No. 1-A, in SE $\frac{1}{4}$ of SW $\frac{1}{4}$, of Sec. 8, T. 15N, R. 6W, NMPM.
Wildcat-Miguel Creek Pool, McKinley County.

Well is 975 feet from South line and 1830 feet from West line
of Section 8. If State Land the Oil and Gas Lease No. is _____

Drilling Commenced August 17, 19 63 Drilling was Completed August 21, 19 63

Name of Drilling Contractor B. A. Dodgens

Address Farmington, New Mexico

Elevation above sea level at Top of Tubing Head 6527 - Ground The information given is to be kept confidential until _____, 19 _____

OIL SANDS OR ZONES

No. 1, from 778 to 794 - show oil No. 4, from _____ to _____
No. 2, from _____ to _____ No. 5, from _____ to _____
No. 3, from _____ to _____ No. 6, from _____ to _____

IMPORTANT WATER SANDS

Include data on rate of water inflow and elevation to which water rose in hole.

No. 1, from 806 to 826 total depth feet.
No. 2, from _____ to _____ feet.
No. 3, from _____ to _____ feet.
No. 4, from _____ to _____ feet.

CASING RECORD

SIZE	WEIGHT PER FOOT	NEW OR USED	AMOUNT	KIND OF SHOE	CUT AND PULLED FROM	PERFORATIONS	PURPOSE
7"	24"	Used	47'	None	29'		Surface casing
4 1/2"	9 1/2"	New	809'	Halliburton	-	778-88-792-4	Production

MUDDING AND CEMENTING RECORD

SIZE OF HOLE	SIZE OF CASING	WHERE SET	NO. BAGS OF CEMENT	METHOD USED	MUD GRAVITY	AMOUNT OF MUD USED
6 1/2"	4 1/2"	809	100sx	Halliburton	-	-
	4 1/2"	738-804	5sx	Pump		
	4 1/2"	0-10	1sx	Pump		

RECORD OF PRODUCTION AND STIMULATION

(Record the Process used, No. of Qts. or Gals. used, interval treated or shot.)

Perforated 2 holes per foot 778 - 788 - 792 - 794

Result of Production Stimulation _____

Depth Cleaned Out _____



RECORD OF DRILL-STEM AND SPECIAL TESTS

If drill-stem or other special tests or deviation surveys were made, submit report on separate sheet and attach hereto

TOOLS USED

Rotary tools were used from 0 feet to 826 TD feet, and from feet to feet.
Cable tools were used from feet to feet, and from feet to feet.

PRODUCTION

Put to Producing, 19.

OIL WELL: The production during the first 24 hours was None barrels of liquid of which % was
was oil; % was emulsion; % water; and % was sediment. A.P.I.
Gravity.

GAS WELL: The production during the first 24 hours was None M.C.F. plus barrels of
liquid Hydrocarbon. Shut in Pressure lbs.

Length of Time Shut in.

PLEASE INDICATE BELOW FORMATION TOPS (IN CONFORMANCE WITH GEOGRAPHICAL SECTION OF STATE):

Southeastern New Mexico

Northwestern New Mexico

T. Anhy.	T. Devonian.	T. Ojo Alamo.
T. Salt.	T. Silurian.	T. Kirtland-Fruitland.
B. Salt.	T. Montoya.	T. Farmington.
T. Yates.	T. Simpson.	T. Pictured Cliffs.
T. 7 Rivers.	T. McKee.	T. Menefee.
T. Queen.	T. Ellenburger.	T. Point Lookout. 60
T. Grayburg.	T. Gr. Wash.	T. Mancos. 290'
T. San Andres.	T. Granite.	T. Dakota.
T. Glorieta.	T.	T. Morrison.
T. Drinkard.	T.	T. Penn.
T. Tubbs.	T.	T. Dilco 582
T. Abo.	T.	T. Hospah 778
T. Penn.	T.	T. Massive Gallup 806
T. Miss.	T.	T.

FORMATION RECORD

From	To	Thickness in Feet	Formation	From	To	Thickness in Feet	Formation
0	60	60'	Surface sand & gravels				
60	290	230'	Lower Hosta sandstone				
290	582		Mulatto tongue of Kn. siltstones				
582	778		Dilco - siltstones				
778	794		Hospah sandstone				
794	806		Shale				
806	826		Massive Gallup sandstone				

ATTACH SEPARATE SHEET IF ADDITIONAL SPACE IS NEEDED

I hereby swear or affirm that the information given herewith is a complete and correct record of the well and all work done on it so far as can be determined from available records.

September 18, 1963

Company or Operator OBIE SHAW
Name Robert E. Smith
Address 323 Vine St., Evansville, Ind.
Position or Title Consulting Geologist