

# NEW MEXICO OIL CONSERVATION COMMISSION

## Santa Fe, New Mexico

### NOTICE OF INTENTION TO DRILL OR RECOMPLETE

Notice must be given to the District Office of the Oil Conservation Commission and approval obtained before drilling or recompletion begins. If changes in the proposed plan are considered advisable, a copy of this notice showing such changes will be returned to the sender. Submit this notice in **QUINTUPPLICATE**. One copy will be returned following approval. See additional instructions in Rules and Regulations of the Commission. **If State Land submit 6 Copies**

**Denver, Colorado**

(Place)

(Date)

OIL CONSERVATION COMMISSION  
SANTA FE, NEW MEXICO

Gentlemen:

You are hereby notified that it is our intention to commence the (Drilling) (~~Recompletion~~) of a well to be known as

**Sinclair Oil & Gas Company**

(Company or Operator)

**Santa Fe 99 Carica**

(Lease)

, Well No. **1**, in **"J"** (Unit) The well is

located **1900** feet from the **South** line and **1900** feet from the

**East**

line of Section **26**, T. **17-N**, R. **8-W**, NMPM.

(GIVE LOCATION FROM SECTION LINE) **Wildest** Pool, **McKinley** County

If State Land the Oil and Gas Lease is No.

If patented land the owner is **Patented**

Address.

We propose to drill well with drilling equipment as follows: **Rotary Tools**

The status of plugging bond is **Statewide Bond**

Drilling Contractor **Rotary Tools. Contract not yet awarded.**

We intend to complete this well in the **Gallup Formation**

formation at an approximate depth of **1400** feet.

#### CASING PROGRAM

We propose to use the following strings of Casing and to cement them as indicated:

Size of Hole	Size of Casing	Weight per Foot	New or Second Hand	Depth	Sacks Cement
<b>12-1/4"</b>	<b>8-5/8"</b>	<b>32#</b>	<b>New</b>	<b>100</b>	<b>150</b>
<b>7-7/8"</b>	<b>5-1/2"</b>	<b>20#</b>	<b>New</b>	<b>1400</b>	<b>200</b>

If changes in the above plans become advisable we will notify you immediately.

ADDITIONAL INFORMATION (If recompletion give full details of proposed plan of work.)

Approved 6-5, 19 56  
Except as follows:

OIL CONSERVATION COMMISSION

By Ernest C. Arnold

Sincerely yours,

**Sinclair Oil & Gas Company**

(Company or Operator)

By G. L. Weger *G. L. Weger*

Position **Asst. Div. Supt. - Production Dept.**

Send Communications regarding well to

Name **J. A. Jackman**

Address **601 Denver Club Bldg., Denver, Colorado**



NEW MEXICO  
OIL CONSERVATION COMMISSION

Form C-128

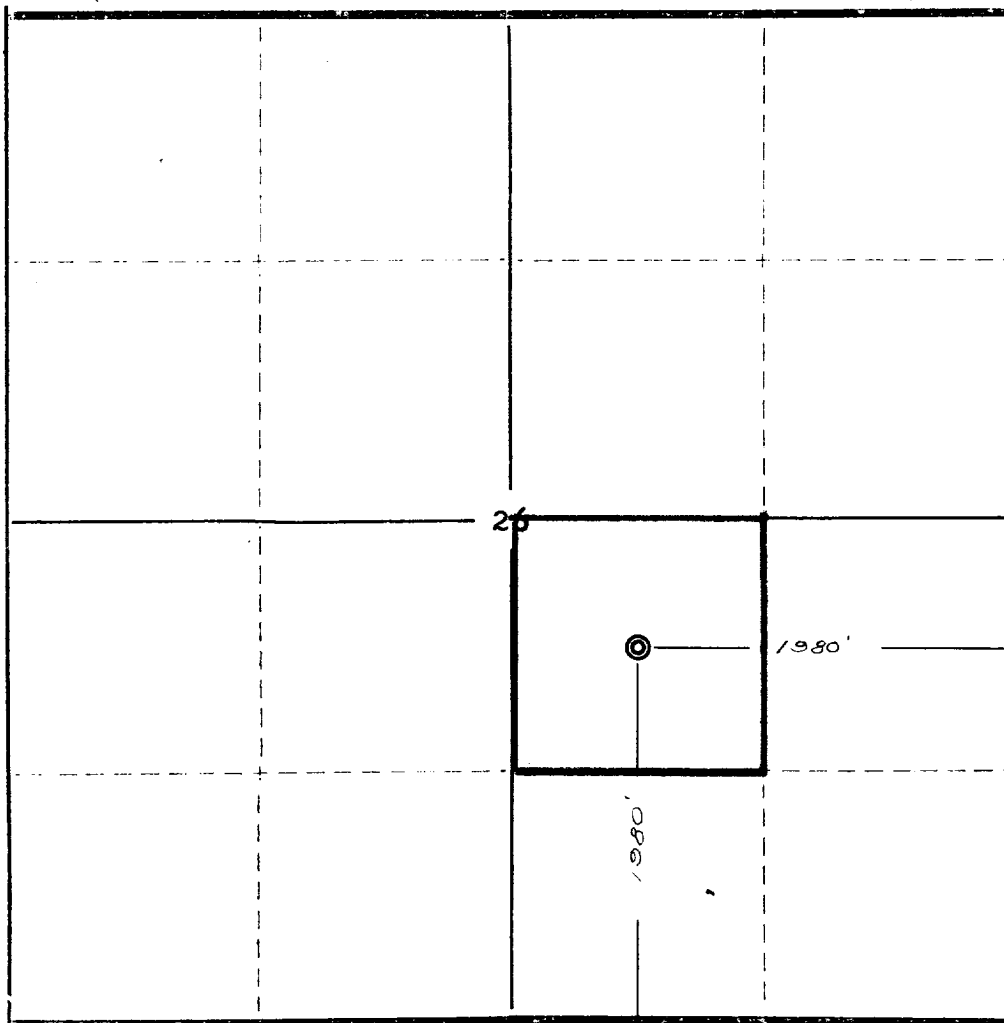
Well Location and/or Gas Proration Plat

Date

Operator Sinclair Oil & Gas Company Lease Santa Fe 99 Garica  
Well No. 1 ~~Santa Fe~~ ~~Garica~~ Section 26 Township 17 North Range 8 West NMPM  
Located 1980 Feet From South Line, 1980 Feet From East Line,  
McKinley County, New Mexico. G. L. Elevation Not Yet Available

Name of Producing Formation \_\_\_\_\_ Pool Wildcat Dedicated Acreage 40

(Note: All distances must be from outer boundaries of Section)



NOTE

This section of  
form is to be  
used for gas  
wells only.

SCALE: 1" = 1000'

1. Is this Well a Dual Comp. ? Yes. No.
2. If the answer to Question 1 is yes, are there any other  
dually completed wells within the dedicated acreage?  
Yes No

Name \_\_\_\_\_  
Position \_\_\_\_\_  
Representing \_\_\_\_\_  
Address \_\_\_\_\_

This is to certify that the above ~~plat~~ was prepared  
from field notes of actual surveys ~~made~~ by me or  
under my supervision and that the same are true and  
correct to the best of my knowledge and belief.

Date Surveyed April 19, 1956

Ernest V. Echohawk

Ernest V. Echohawk  
Reg. Land Surveyor, N. Mex., Reg. No. 1545

# OIL CONSERVATION COMMISSION

## AZTEC DISTRICT OFFICE

No. Copies Received 5

### DISTRIBUTION

	NO. FURNISHED	
Operator	<u>1</u>	
Santa Fe	<u>1</u>	
Proration Office		
State Land Office		
U. S. G. S.	<u>2</u>	
Transporter		
File	<u>1</u>	<input checked="" type="checkbox"/>