

NEW MEXICO OIL CONSERVATION COMMISSION
Santa Fe, New Mexico

Form C-101
Revised (12/1/55)

NOTICE OF INTENTION TO DRILL

Notice must be given to the District Office of the Oil Conservation Commission and approval obtained before drilling or recompletion begins. If changes in the proposed plan are considered advisable, a copy of this notice showing such changes will be returned to the sender. Submit this notice in QUINTUPLICATE. One copy will be returned following approval. See additional instructions in Rules and Regulations of the Commission. If State Land submit 6 Copies Attach Form C- 128 in triplicate to first 3 copies of form C-101

Denver, Colorado
(Place)

March 7, 1957
(Date)

OIL CONSERVATION COMMISSION
SANTA FE, NEW MEXICO

Gentlemen:

You are hereby notified that it is our intention to commence the Drilling of a well to be known as

Sinclair Oil & Gas Company
(Company or Operator)

Santa Fe 169 NE Homesh, Well No. 1, in nwn (Unit) The well is

located 760 feet from the South line and 660 feet from the West line of Section 8, T. 17N, R. 7W, NMPM.

(GIVE LOCATION FROM SECTION LINE)

Wildest Pool, McKinley County

If State Land the Oil and Gas Lease is No.

If patented land the owner is.

Address.

We propose to drill well with drilling equipment as follows: Rotary Tools

The status of plugging bond is Statewide

Drilling Contractor Empire States Drilling Corporation

We intend to complete this well in the Gallup formation at an approximate depth of 1900 feet.

CASING PROGRAM

We propose to use the following strings of Casing and to cement them as indicated:

Size of Hole	Size of Casing	Weight per Foot	New or Second Hand	Depth	Sacks Cement
12-1/4"	8 5/8"	21#	N	30	30
7-7/8"	5 1/2"	17#	N	1900	200

If changes in the above plans become advisable we will notify you immediately.

ADDITIONAL INFORMATION (If recompletion give full details of proposed plan of work.)

Approved 3-8, 1957
Except as follows:

OIL CONSERVATION COMMISSION

By

Sincerely yours,

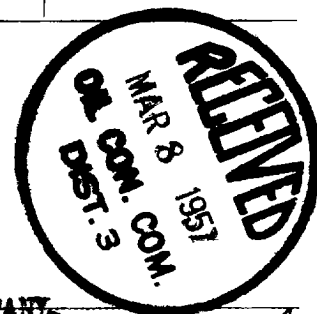
SINCLAIR OIL & GAS COMPANY
(Company or Operator)

By R. W. Newport

Position Div. Chief Clerk - Production Department
Send Communications regarding well to

Name J. A. Jackson

Address 601 Denver Club Bldg., Denver 2, Colo.



NEW MEXICO
OIL CONSERVATION COMMISSION

Form C-128

Well Location and/or Gas Proration Plat

Date March 7, 1957

Operator Sinclair Oil & Gas Company Lease #1/Santa Fe 169, NE Hospah

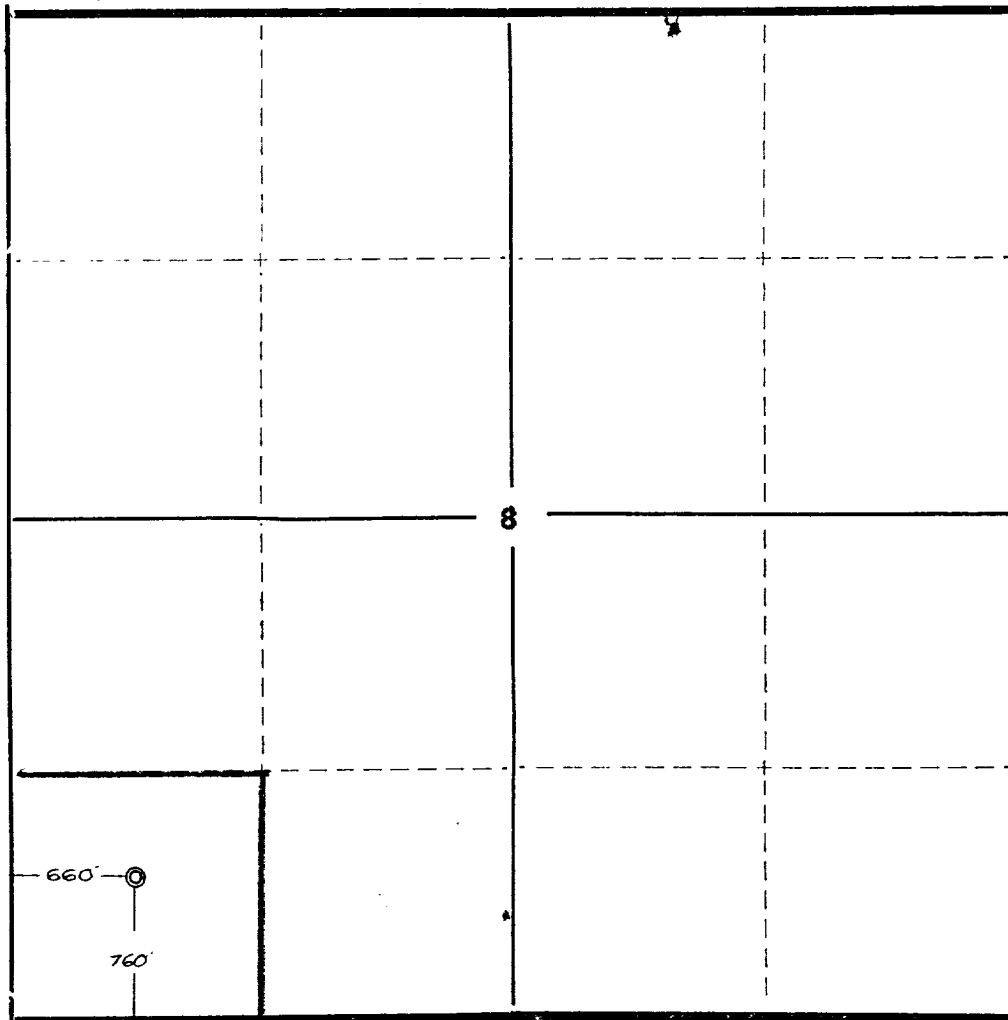
Well No. 1 Section 8 Township 17 North Range 7 West NMPM

Located 760 Feet From South Line, 660 Feet From West Line,

McKinley County, New Mexico. G. L. Elevation 6694

Name of Producing Formation Gallup Pool Wildcat Dedicated Acreage 40

(Note: All distances must be from outer boundaries of Section)



NOTE

This section of form is to be used for gas wells only.

SCALE: 1"=1000'

1. Is this Well a Dual Comp. ? Yes ☐ No ☐.
2. If the answer to Question 1 is yes, are there any other dually completed wells within the dedicated acreage?
Yes ☐ No ☐.

Name _____
Position _____
Representing _____
Address _____

This is to certify that the above plat was prepared from field notes of actual surveys made by _____ or under my supervision and that the same are true and correct to the best of my knowledge and belief.

Date Surveyed February 27, 1957

Ernest V. Echohawk
Ernest V. Echohawk
Reg. Land Surveyor, N. Mex., Reg. No. 1545

OIL CONSERVATION COMMISSION**AZTEC DISTRICT OFFICE**No. Copies Received **5****DISTRIBUTION**

	NO. FURNISHED	
Operator	1	
Santa Fe	1	
Proration Office		
State Land Office		
U. S. G. S.	2	
Transporter		
File	1	/