

NEW MEXICO OIL CONSERVATION COMMISSION
Santa Fe, New Mexico

Form C-101
Revised (12/1/55)

NOTICE OF INTENTION TO DRILL

Notice must be given to the District Office of the Oil Conservation Commission and approval obtained before drilling or recompletion begins. If changes in the proposed plan are considered advisable, a copy of this notice showing such changes will be returned to the sender. Submit this notice in QUINTUPLICATE. One copy will be returned following approval. See additional instructions in Rules and Regulations of the Commission. If State Land submit 6 Copies Attach Form C- 128 in triplicate to first 3 copies of form C-101 on all wells

Albuquerque, New Mexico

July 18, 1960

(Place)

(Date)

OIL CONSERVATION COMMISSION
SANTA FE, NEW MEXICO

Gentlemen:

You are hereby notified that it is our intention to commence the Drilling of a well to be known as
American Fiber Corporation

Santa Fe Pacific Railroad Company

(Company or Operator)

, Well No. **1**, in **1** The well is

1980

(Lease)

South

located **East** feet from the **30** line and **660** feet from the

line of Section **30**, T. **19 N**, R. **5 W**, NMPM.

(GIVE LOCATION FROM SECTION LINE)

Pool, County

If State Land the Oil and Gas Lease is No.

If patented land the owner is **Mark Elkins**

Address **Grants, N.M.**

We propose to drill well with drilling equipment as follows: **Rotary to total depth**

The status of plugging bond is **American Fiber Corporation, 200 Simms Bldg**

Drilling Contractor **Gardner Brothers Drilling Company**

We intend to complete this well in the **Gallup** formation at an approximate depth of **3150** feet.

CASING PROGRAM

We propose to use the following strings of Casing and to cement them as indicated:

Size of Hole	Size of Casing	Weight per Foot	New or Second Hand	Depth	Sacks Cement
12 1/2"	8-5/8ths"	24# Grade H	New	100'	100
7 7/8ths"	4 1/2"	9 1/2# "J"	New	3150'	150

If changes in the above plans become advisable we will notify you immediately.

ADDITIONAL INFORMATION

Approved JUL 21 1960, 19
Except as follows:

Sincerely yours,

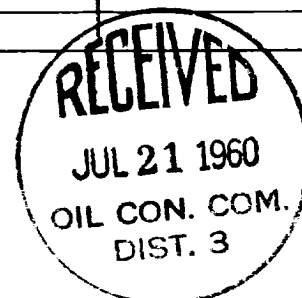
AMERICAN FIBER CORPORATION

By Bert F. Gray, Jr. (Company or Operator)
Vice President

Position
Send Communications regarding well to
Name **American Fiber Corporation**
Address **P.O. Box 1509, Albuquerque, New Mexico**

OIL CONSERVATION COMMISSION

By A. R. Gendrich



NEW MEXICO OIL CONSERVATION COMMISSION

Well Location and Acreage Dedication Plat

Section A.

Date July 21, 1960

Operator American Fiber Corporation Lease Santa Fe Pacific Railroad Company
Well No. 1 Unit Letter I Section 30 Township 19 North Range 5 West NMPL
Located 1980 Feet From South Line, 660 Feet From East Line
County McKinley G. L. Elevation 6824 Dedicated Acreage 40 Acres
Name of Producing Formation Gallup Pool Wildcat

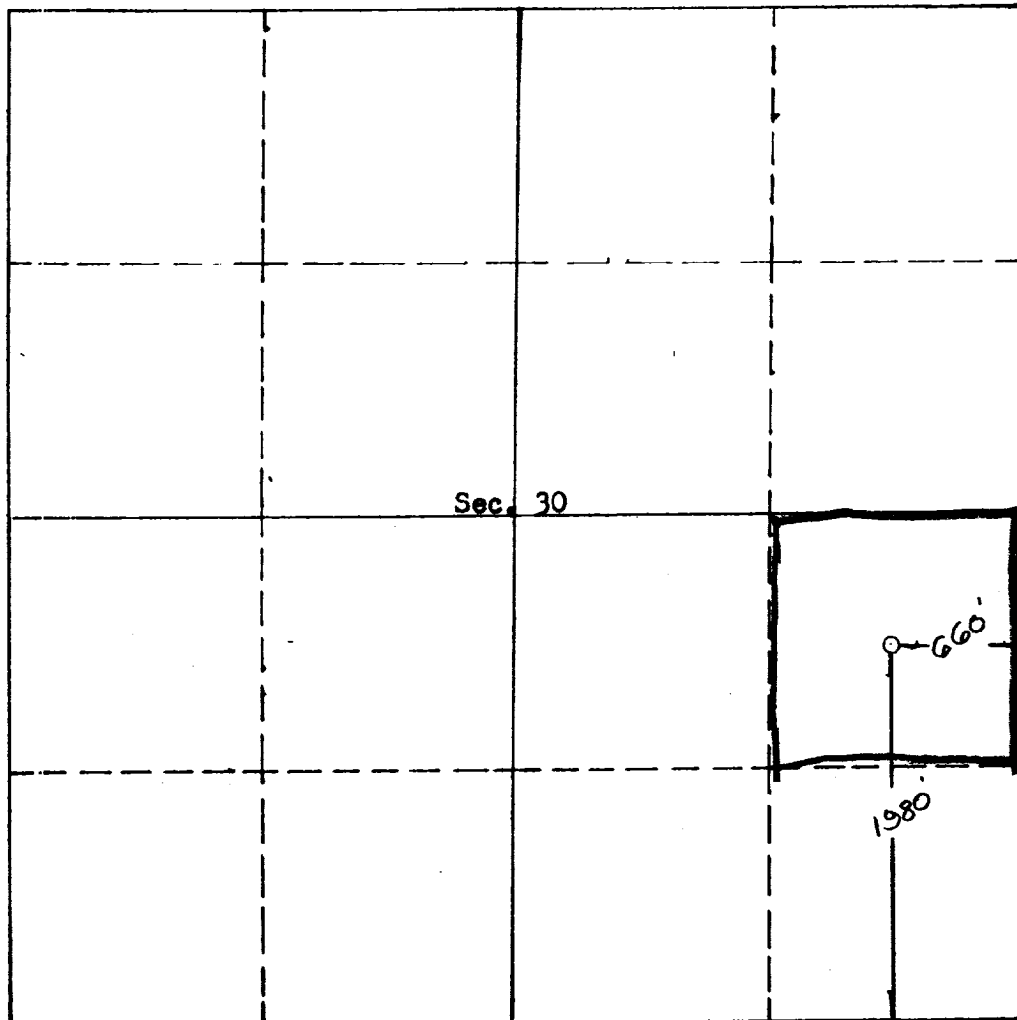
1. Is the Operator the only owner* in the dedicated acreage outlined on the plat below?
Yes ☒ No ☐
2. If the answer to question one is "no," have the interests of all the owners been consolidated by communitization agreement or otherwise? Yes ☐ No ☐ If answer is "yes,"
Type of Consolidation _____
3. If the answer to question two is "no," list all the owners and their respective interests below:

Owner

Land Description



Section. B



This is to certify that the information in Section A above is true and complete to the best of my knowledge and belief.

American Fiber Corporation
(Operator)
Bert F. Gray, Jr.
(Representative)

200 Simms Bldg. Albuquerque
Address

This is to certify that the well location shown on the plat in Section B was plotted from field notes and other surveys by me or under my supervision and that the same is true and correct to the best of my knowledge and belief.

Date Surveyed June 23, 1960

Ernest V. Echohawk
Ernest V. Echohawk
Registered Land Surveyor.

Certificate No. 1545

19

STATE OF NEW MEXICO		
OIL CONSERVATION COMMISSION		
AZTEC DISTRICT OFFICE		
NUMBER OF COPIES RECEIVED		5
DISTRIBUTION		
SANTA FE		
FILE		
U.S.G.S.		
LAND OFFICE		
TRANSPORTER	100	
PROMOTION OFFICE		
OPERATOR		