

NEW MEXICO OIL CONSERVATION COMMISSION
Santa Fe, New Mexico

NOTICE OF INTENTION TO DRILL OR RECOMPLETE

Notice must be given to the District Office of the Oil Conservation Commission and approval obtained before drilling or recompletion begins. If changes in the proposed plan are considered advisable, a copy of this notice showing such changes will be returned to the sender. Submit this notice in QUINTUPLICATE. One copy will be returned following approval. See additional instructions in Rules and Regulations of the Commission. If State Land submit 6 Copies

Denver, Colorado
(Place)

June 5, 1956
(Date)

OIL CONSERVATION COMMISSION
SANTA FE, NEW MEXICO

Gentlemen:

You are hereby notified that it is our intention to commence the (Drilling) ~~Recompletion~~ of a well to be known as

Sinclair Oil & Gas Company
(Company or Operator)

Santa Fe 83 Chase Wash
(Lease)

Well No. 1, in "N" (Unit) The well is

located 1980 feet from the South line and 1980 feet from the East
Line of Section 23, T. 19-N, R. 10-W, NMPM.

(GIVE LOCATION FROM SECTION LINE) Wildcat Pool, McKinley County

D	C	B	A
E	F	G	H
L	K	J	I
M	N	O	P

If State Land the Oil and Gas Lease is No.

If patented land the owner is Patented

Address.

We propose to drill well with drilling equipment as follows: Rotary Tools

The status of plugging bond is Statelands Bond.

Drilling Contractor Rotary Tools. Contract not yet awarded.

We intend to complete this well in the Gallup Formation formation at an approximate depth of 2600 feet.

CASING PROGRAM

We propose to use the following strings of Casing and to cement them as indicated:

Size of Hole	Size of Casing	Weight per Foot	New or Second Hand	Depth	Sacks Cement
12-1/4"	8-5/8"	32#	New	100	150
7-7/8"	5-1/2"	20#	New	2600	200

If changes in the above plans become advisable we will notify you immediately.

ADDITIONAL INFORMATION (If recompletion give full details of proposed plan of work.)

Approved 6-6, 1956
Except as follows:

OIL CONSERVATION COMMISSION

By Emory E. Smith

Sincerely yours,

Sinclair Oil & Gas Company
(Company or Operator)

By G. L. Weger Gene L. Weger

Position Asst. Div. Supt. - Production Dept.

Send Communications regarding well to

Name J. A. Jackman

Address 601 Denver Club Bldg., Denver, Colorado



NEW MEXICO
OIL CONSERVATION COMMISSION

Form C-128

Well Location and/or Gas Proration Plat

Date **June 5, 1956**

Operator **Sinclair Oil & Gas Company**

Lease **Santa Fe 83 Chaco Wash**

Well No. **1** ~~Santa Fe~~ ~~Chaco Wash~~ Section **23** Township **19 North** Range **10 West** NMPM

Located **1980** Feet From **South** Line, **1980** Feet From **East** Line,

McKinley

County, New Mexico.

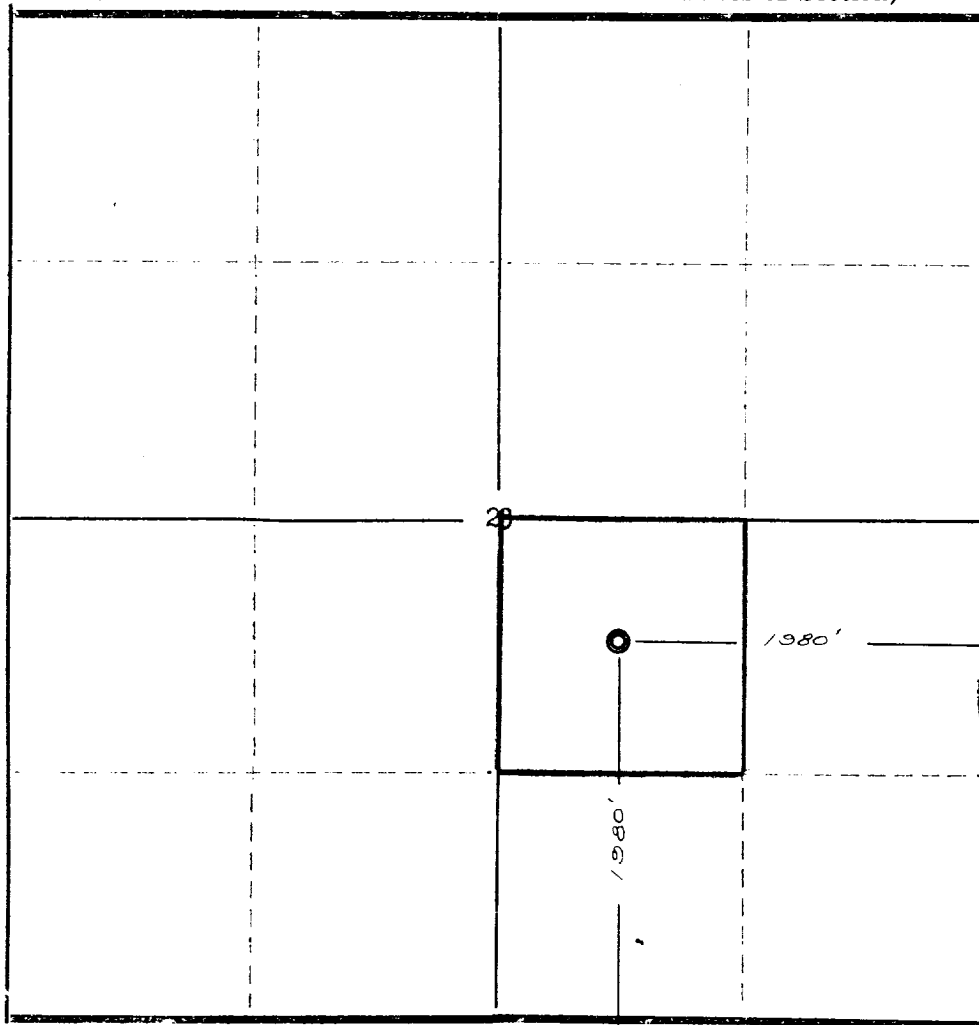
G. L. Elevation **Not Yet Available**

Name of Producing Formation

Pool **Wildcat**

Dedicated Acreage **40**

(Note: All distances must be from outer boundaries of Section)



SCALE: 1"=1000'



1. Is this Well a Dual Comp. ? Yes No
2. If the answer to Question 1 is yes, are there any other dually completed wells within the dedicated acreage?
Yes No

This is to certify that the above plat was prepared from field notes of actual surveys made by me or under my supervision and that the same are true and correct to the best of my knowledge and belief.

Date Surveyed **April 27, 1956**

Ernest V. Echshaw
Ernest V. Echshaw

Reg. Land Surveyor, N. Mex., Reg. No. 1545

Name
Position
Representing
Address

OIL CONSERVATION COMMISSION		
AZTEC DISTRICT OFFICE		
No. Copies Received <u>5</u>		
DISTRIBUTION		
	NO. FURNISHED	
Operator	<u>1</u>	
Santa Fe	<u>1</u>	
Proration Office		
State Land Office		
U. S. G. S.	<u>1</u>	
Transporter		
File	<u>1</u>	<u>1</u>