

NEW MEXICO OIL CONSERVATION COMMISSION
Santa Fe, New Mexico

NOTICE OF INTENTION TO DRILL OR RECOMPLETE

Notice must be given to the District Office of the Oil Conservation Commission and approval obtained before drilling or recompletion begins. If changes in the proposed plan are considered advisable, a copy of this notice showing such changes will be returned to the sender. Submit this notice in QUINTUPPLICATE. One copy will be returned following approval. See additional instructions in Rules and Regulations of the Commission. If State Land submit 6 Copies

Denver, Colorado
(Place)July 10, 1956
(Date)OIL CONSERVATION COMMISSION
SANTA FE, NEW MEXICO

Gentlemen:

You are hereby notified that it is our intention to commence the (Drilling) ~~/Recompletion/~~ of a well to be known as

Sinclair Oil & Gas Company

(Company or Operator)

Santa Fe 74 North Ranch

(Lease)

Well No. 1, in "J" The well is
(Unit)

located 1980 feet from the East line and 1980 feet from the South line of Section 14, T. 19N, R. 11W, NMPM.

(GIVE LOCATION FROM SECTION LINE) Wildcat Pool, McKinley County

D	C	B	A
E	F	G	H
L	K	J	I
M	N	O	P

If State Land the Oil and Gas Lease is No. -----

If patented land the owner is Patented

Address. -----

We propose to drill well with drilling equipment as follows: Rotary Tools

The status of plugging bond is Statewide

Drilling Contractor Contract not yet awarded

We intend to complete this well in the Hesperia - Gallup formation at an approximate depth of 2350 feet.

CASING PROGRAM

We propose to use the following strings of Casing and to cement them as indicated:

Size of Hole	Size of Casing	Weight per Foot	New or Second Hand	Depth	Sacks Cement
12 - 1/4"	8 - 5/8"	32#	N	30	30
7 - 7/8"	5 - 1/2"	17#	N	2350	250

If changes in the above plans become advisable we will notify you immediately.

ADDITIONAL INFORMATION (If recompletion give full details of proposed plan of work.)

Approved 7-11, 1956
Except as follows:

Sincerely yours,

Sinclair Oil & Gas Company
(Company or Operator)

By R. W. Newport R.W. Newport

Position Chief Clerk - Production Department

Send Communications regarding well to

Name J.A. Jackman

Address 601 Denver Club Bldg. Denver, Colorado

OIL CONSERVATION COMMISSION

By Emery T. Arnold



NEW MEXICO
OIL CONSERVATION COMMISSION

Form C-128

Well Location and/or Gas Proration Plat

Date July 10, 1956

Operator Sinclair Oil & Gas Company Lease Santa Fe 7th North Ranch

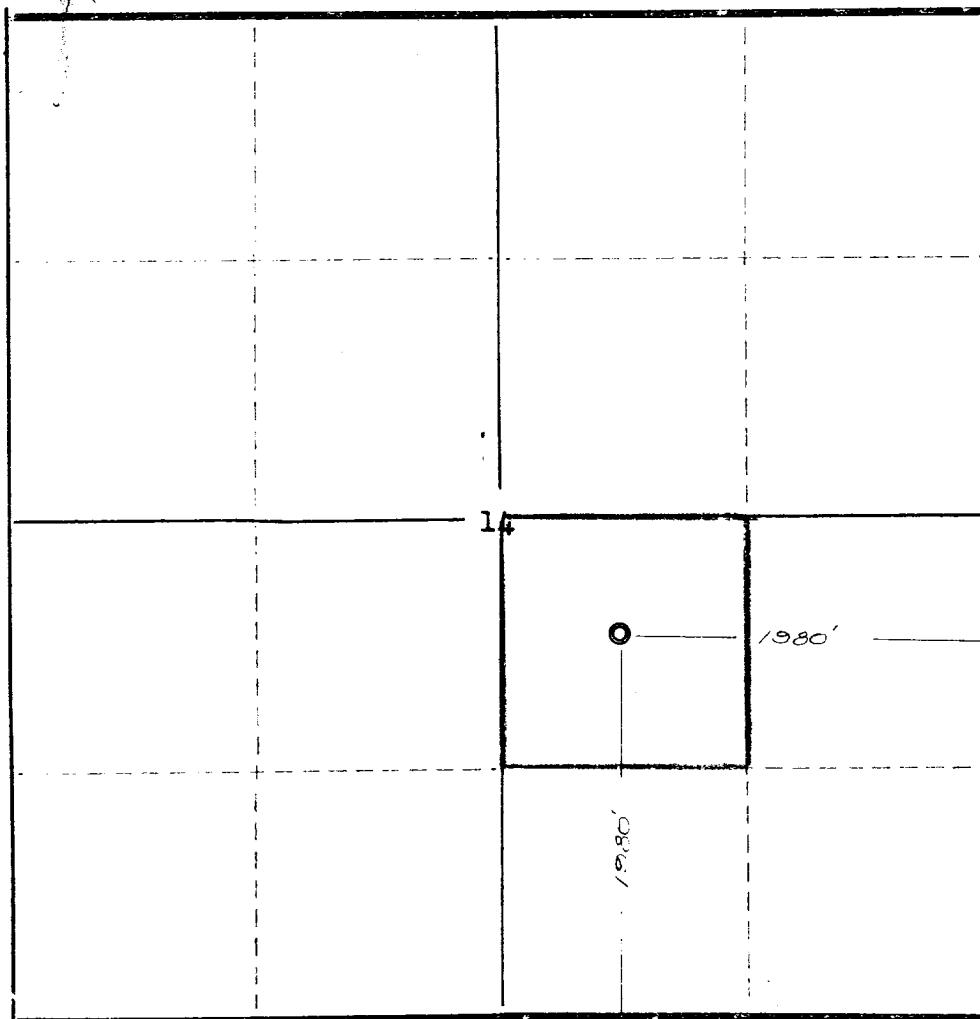
Well No. 1 ~~Santa Fe~~ Section 14 Township 19 North Range 11 West NMPM
~~North Ranch~~

Located 1980 Feet From South Line, 1980 Feet From East Line,

McKinley County, New Mexico. G. L. Elevation 6634

Name of Producing Formation Hospah - Gallup Pool Wildcat Dedicated Acreage 40

(Note: All distances must be from outer boundaries of Section)



NOTE

This section of
form is to be
used for gas
wells only.



SCALE: 1" = 1000'

1. Is this Well a Dual Comp. ? Yes No
2. If the answer to Question 1 is yes, are there any other
dually completed wells within the dedicated acreage?
Yes No

Name _____
Position _____
Representing _____
Address _____

This is to certify that the above plat was prepared
from field notes of actual surveys made by me or
under my supervision and that the same are true and
correct to the best of my knowledge and belief.

Date Surveyed April 22, 1956

Ernest V. Echohawk
Ernest V. Echohawk
Reg. Land Surveyor, N. Mex., Reg. No. 1545



OIL CONSERVATION COMMISSION

AZTEC DISTRICT OFFICE

No. Copies Received 5

DISTRIBUTION

	NO. FURNISHED	
Operator	1	
Santa Fe	1	
Protection Office		
State Land Office		
U. S. G. S.	2	
Transporter		
File	1	✓