

OPERATOR WOOSLEY OIL CO		PROPERTY NAME STATE		WELL NO. 1
DATE 8-9-95	LOCATION ULSTR) D-16-19N-06W		FOOTAGE 330 FNL & 330 FWL	
API NO. 30-031 -05318		POOL WILDCAT MESAVERDE		
Tops				
PICTURE CLIFF 534 Ft.				
CLIFFHOUSE 1739 Ft.				
MENEFE 1847 Ft.				
POINT LOOKOUT 2202 Ft.				
CASING RECORD: 9 5/8 INCH 122 FT. CIRCULATED 5 1/2 INCH 2270 FT. 7 7/8 INCH HOLE 100 SXS. PERFS. 2174 FT. - 2184 FT.				

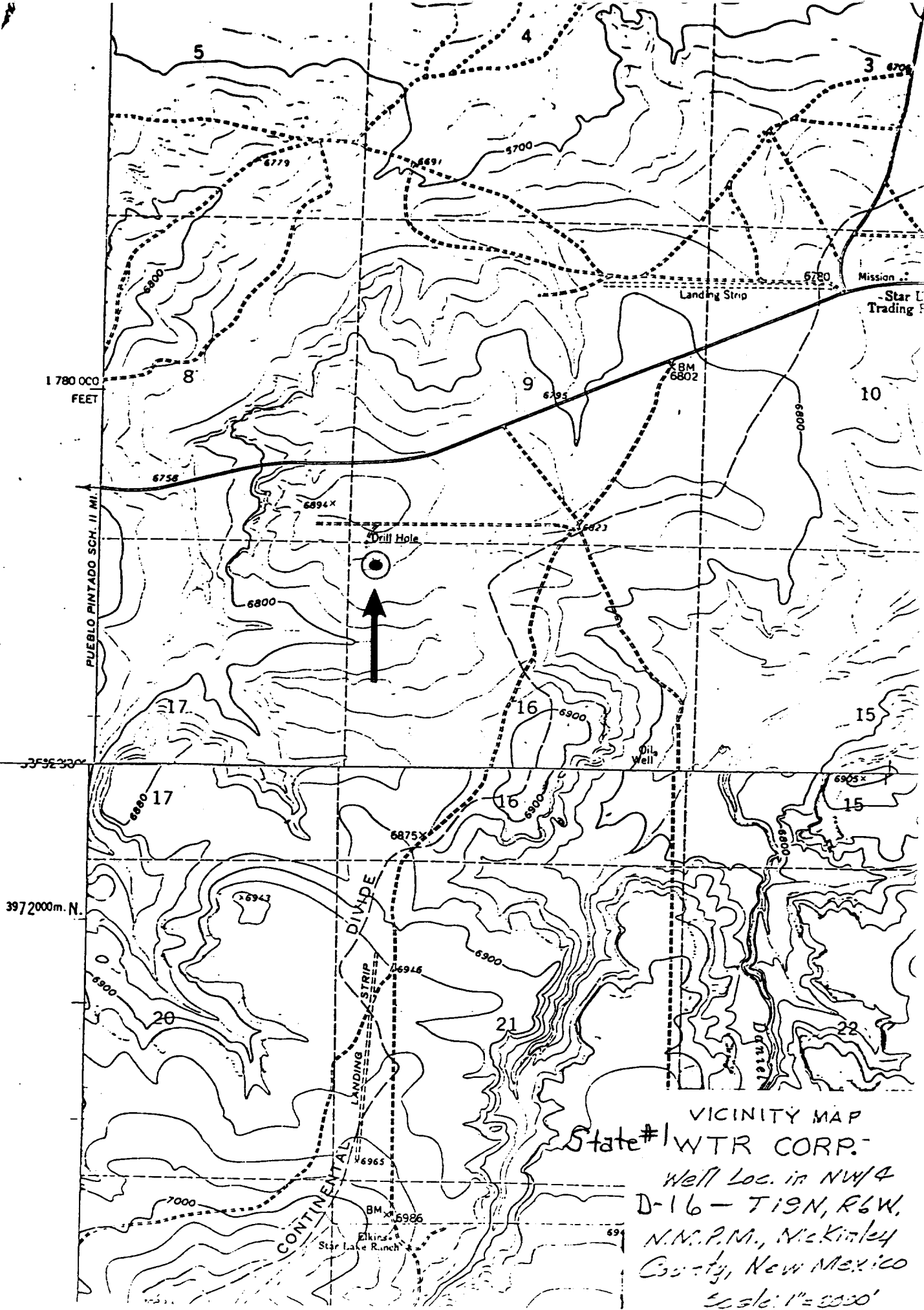
PLUGGING PROCEDURE

Woosley Oil Co.
State # 1
D-16-19N-06W
30-031-05318

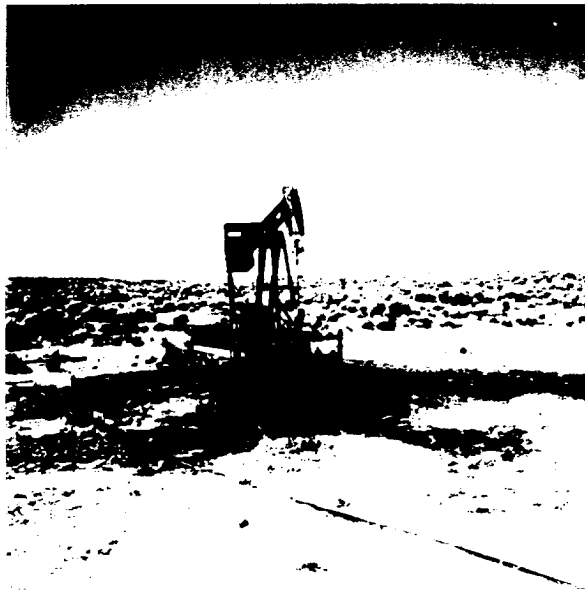
Presumed downhole conditions and equipment
See attached schematic

Pull all production equipment and nipple up BOP

1. Go in hole with tbg. and set a plug from 1814 ft. to 1664 ft. WOC & tag cement.
2. Load hole with 8.4 lb. 40 visc. Mud and test casing.
3. Pull tbg. & GIH with wireline & perf. two holes at 609 Ft.
4. Establish rate through perfs & try to circulate. If no circulation is established pump 44 sacks through perfs & leave 17 sxs. above perforations. WOC & tag cement at 459 ft.
5. GIH with wireline and perforate at 172 feet. Bullhead cement down 4 ½ casing and circulate cement out the BH.
6. Top off csg. with cement and set a dry hole marker.
7. Restore location .



VICINITY MAP
State #1 WTR CORP.
Well Loc. in NW/4
D-16 - T19N, R6W,
N.N.P.M., McKinley
County, New Mexico
Scale: 1" = 2000'



Woosley State # 1

D-16-19N-06W